

Guy S. Little, Jr. Presents

SUMMER OF MUSICALS

"Central Illinois' Only Professional Equity Drama and Music Theatre"

Sixth Season



June 26th Through August 19th, 1962

Air-Conditioned Grand Theatre



On the Square



Sullivan



June 26th through July 1st

Eddie Bracken

Star of 35 Hollywood Movies

in

"The Tunnel of Love"

Comedy by Fields and DeVries

with

Jerry Ellis, Lynn Colby
and Jerili Little

July 3rd through July 8th

Mark Rydell

'Jefi' from TV's "As The World Turns"

in

"The Glass Menagerie"

Drama by Tennessee Williams

co-starring

DOLORES WILSON



July 10th through July 15th

Dolores Wilson

Metropolitan Opera Star

in

"The King and I"

Musical by Rodgers and Hammerstein

with

Jeff Warren, Barbara Cole, Lynn
Colby and Guy Little

July 17th through July 22nd

Jack Chaplain

Young TV Star from Charleston

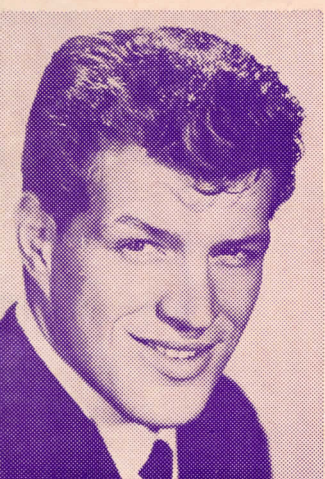
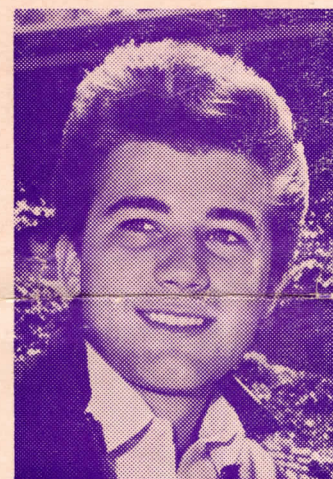
in

"Bye Bye Birdie"

New Broadway Musical Hit

with

Jerry Ellis, Jerili Little,
Gertrude Burman, Peter Irmiter



July 24th through July 29th

Peter Palmer

B'way and Hollywood's "Li'l Abner"

in

"Oklahoma!"

Musical by Rodgers and Hammerstein

with

Barbara Cole, Charles Abbate,
Lynn Colby, Gertrude Burman

July 31st through August 5th

Margaret Whiting

Exciting TV and Recording Star

in

"Gypsy"

Musical Based on Gypsy Rose Lee's Memoirs

with

Jerry Ellis, John Kelso,
Dick Stephens and Barbara Cole



August 7th through August 19th—Two Weeks

"The Music Man"

Meredith Willson's Musical Hit

With Jeff Warren, Jerili Little, John Kelso, Peter Irmiter, Dick Stephens,
Charles Abbate and a Cast of Grand Theatre Favorites!



Summer of Musicals

JEFF WARREN, Director

Andrew Greenhut, Scenic Designer

CHARLES ABBATE, Choreographer

Jessie Rasar, Costumer

ELWOOD SMITH, Musical Director

Thomas Heino, Stage Manager

Featuring a Cast of Stars from Broadway, Hollywood, TV and Opera

ABOUT THE THEATRE

It was in July of 1957 that Guy S. Little, Jr., first brought Broadway to Sullivan. In only five years SUMMER OF MUSICALS has become one of the outstanding musical theatres in the summer stock world. It is the only professional Equity music theatre between Chicago and St. Louis and one of the few theatres in the country that presents a stock season of the latest Broadway musicals and plays on a proscenium stage in an air-conditioned indoor theatre. The intimate Grand Theatre has 500 seats with excellent sight-lines and acoustics. In the past five seasons, some forty-three top productions have

been presented at the Grand. Theatre patrons at the Grand come from over a hundred miles to the north, south, east and west of Sullivan to enjoy an evening or matinee of outstanding musical and dramatic entertainment. Now established with Midwest audiences and considerably enlarged in scope, SUMMER OF MUSICALS launches its sixth and most exciting season to date presenting seven outstanding musicals and plays featuring stars from Broadway, Hollywood, TV and Opera.

"THE TUNNEL OF LOVE"

June 26-July 1

The first play to be presented at the Grand originally opened on B'way in 1957 and ran for two seasons. Our star, Eddie Bracken, toured in the national company the following year. In "THE TUNNEL OF LOVE," Eddie Bracken plays the part of a suburban husband in a five-year childless marriage. He and his wife decide to adopt a baby, but a loud-mouth neighbor upsets the appcart when the adoption investigator comes to call. The N.Y. Daily News called the show "good fun" while the N.Y. World Telegram said "it offers laugh after laugh."

"THE GLASS MENAGERIE"

July 3-8

Mark Rydell is the third star from TV's "As The World Turns" to appear at the Grand following Ruth Warrick and Rosemary Prinz. "THE GLASS MENAGERIE" has been described as a "memory play" and was Tennessee Williams' first drama to be presented on B'way where it won the Drama Critics' Award as the best play of the season.

"THE KING AND I"

July 10-15

Set in Bangkok in the 1860's, "THE KING AND I" tells the appealing story of Anna, the English widow hired to teach the knowledge and customs of the western world to the wives and children of the King of Siam. The hit songs from this outstanding Rodgers and Hammerstein score include "Shall We Dance?," "Hello, Young Lovers," "Getting To Know You," "We Kiss In A Shadow," "I Have Dreamed" and "Something Wonderful."

"BYE BYE BIRDIE"

July 17-22

"BYE BYE BIRDIE" tells the story of a rock and roll singer who is about to be inducted into the Army. The singer, Conrad Birdie, an Elvis Presley type, has a pompadour and thick sideburns, he wears a gaudy gold costume and speaks in a rugged voice. His agent brings him to a small Midwestern town for his last kiss before he goes into the Army. The songs from this recent B'way hit include "Put On a Happy Face," "A Lot of Livin' to Do" and "One Boy."

"OKLAHOMA!"

July 24-29

Rodgers and Hammerstein's first musical has become a classic of the modern theatre. Set in the southwest at the turn of the century, the outstanding score from this ever-popular musical includes such songs as "Oh, What A Beautiful Mornin'," "Surrey With The Fringe On Top," "Many A New Day," "I Can't Say No," "Kansas City" and "Out Of My Dreams."

"GYPSY"

July 31-August 5

Based on Gypsy Rose Lee's memoirs, "GYPSY" tells the story of a famous stage mother and her two daughters, June Havoc and Gypsy Rose Lee. The critics praised this great musical . . . "Excellent . . . touching . . . wonderfully funny."—N.Y. Daily News. "A Smash Hit, Fascinating, Brilliant"—Cue Magazine. The popular songs from this score include "Small World," "You'll Never Get Away From Me," "Together, Wherever We Go" and "Everything's Coming Up Roses."

"THE MUSIC MAN"

August 7-19

(Two Weeks)

This is one of the great hits of the century which ran on B'way for four full seasons. "THE MUSIC MAN" is the story of a traveling salesman charlatan who cannot read music or play any instrument, but he is the hottest instrument salesman traveling in the Midwest in 1912. He completely charms all the ladies who have utter faith in him and this naive faith subtly transforms him from a con-man into a reliable citizen. The outstanding hits include "Seventy-six Trombones," "Till There Was You," "Goodnight, My Someone," "Marian, The Librarian" and "Lida Rose."

SEASON TICKETS NOW AVAILABLE

SEASON TICKETS: \$19.75 including tax. Good any night or matinee of the week—Save up to \$4.75 over the price of single tickets. These may be used any way you wish—for one performance each week, all for one performance, etc. Not more than two seats from any one season ticket can be used for Friday or Saturday evening performances. SPECIAL RATES AVAILABLE FOR CLUBS AND GROUPS OF 50 OR MORE. BOOKINGS ACCEPTED NOW FOR ORGANIZATION BENEFIT PERFORMANCES. For full information: Call 6245 in Sullivan until June 17th; after June 17th call 6144, Sullivan or write SUMMER OF MUSICALS, Box 155, Sullivan, Illinois.

SINGLE TICKETS AVAILABLE NOW

SINGLE TICKETS: Tuesday, Wednesday, Thursday and Sunday evenings: \$3.20, \$2.95, \$1.95 and \$1.00 including tax. Friday and Saturday evenings: \$3.50 and \$2.50 and \$1.75. Saturday matinee at 5:00 and Sunday matinee at 2:30—\$2.95, \$1.95 and \$1.00. Children When Accompanied by an Adult—75c. Students with identification cards admitted to better seats for \$1.60 on Tuesday night. CURTAIN TIME: Tuesday through Friday at 8:15, Saturday at 5:00 and 9:00; Sunday at 2:30 and 7:30.

Grand Theatre ● Sullivan, Ill.

Please send me _____ Season Tickets at \$19.75 each

Please reserve the following Single Performance Tickets

1. Name of Show _____ Date _____
(Matinee or Evening)
_____ tickets at \$ _____ each Total \$ _____

2. Name of Show _____ Date _____
(Matinee or Evening)
_____ tickets at \$ _____ each Total \$ _____

Grand Total \$ _____

Name _____

Address _____

City and State _____

Please enclose self-addressed, stamped envelope for return of tickets.

