

10-4-2011

Acer negundo L.

Loy R. Phillippe

Illinois Natural History Survey, rickp@inhs.illinois.edu

Follow this and additional works at: http://thekeep.eiu.edu/herbarium_specimens_byname



Part of the [Botany Commons](#)

Recommended Citation

Sapindaceae, *Acer negundo*, L. USA, Illinois, Schuyler, In headwaters of intermittent stream leading into Sugar Creek, south of Scab Hollow Creek and north of Mill Creek., 4-Oct-2011, Loy R. Phillippe, 43058, (EIU). Stover-Ebinger Herbarium, Eastern Illinois University.
http://thekeep.eiu.edu/herbarium_specimens_byname/7931

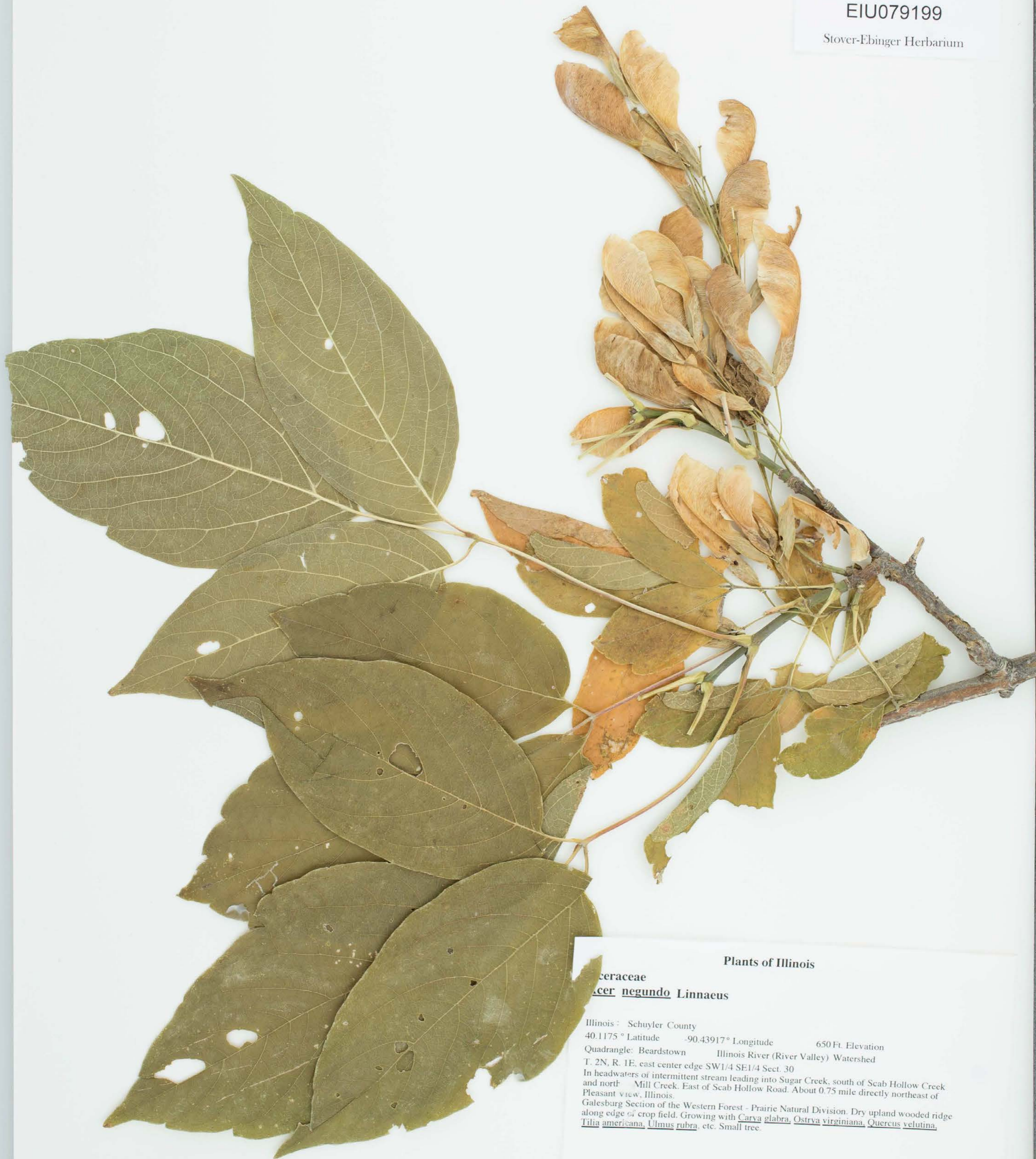


Eastern Illinois University



EIU079199

Stover-Ebinger Herbarium



Plants of Illinois

Ulmaceae
Acer negundo Linnaeus

Illinois: Schuyler County
40.1175° Latitude -90.43917° Longitude 650 Ft. Elevation
Quadrangle: Beardstown Illinois River (River Valley) Watershed
T. 2N, R. 1E, east center edge SW1/4 SE1/4 Sect. 30
In headwaters of intermittent stream leading into Sugar Creek, south of Scab Hollow Creek
and north Mill Creek. East of Scab Hollow Road. About 0.75 mile directly northeast of
Pleasant view, Illinois.
Galesburg Section of the Western Forest - Prairie Natural Division. Dry upland wooded ridge
along edge of crop field. Growing with *Carva glabra*, *Ostrya virginiana*, *Quercus velutina*,
Tilia americana, *Ulmus rubra*, etc. Small tree.

43058 Loy R. Phillippe

4 October 2011