

6-23-2005

Acer negundo L.

Gordon C. Tucker
gctucker@eiu.edu

Follow this and additional works at: http://thekeep.eiu.edu/herbarium_specimens_byname



Part of the [Botany Commons](#)

Recommended Citation

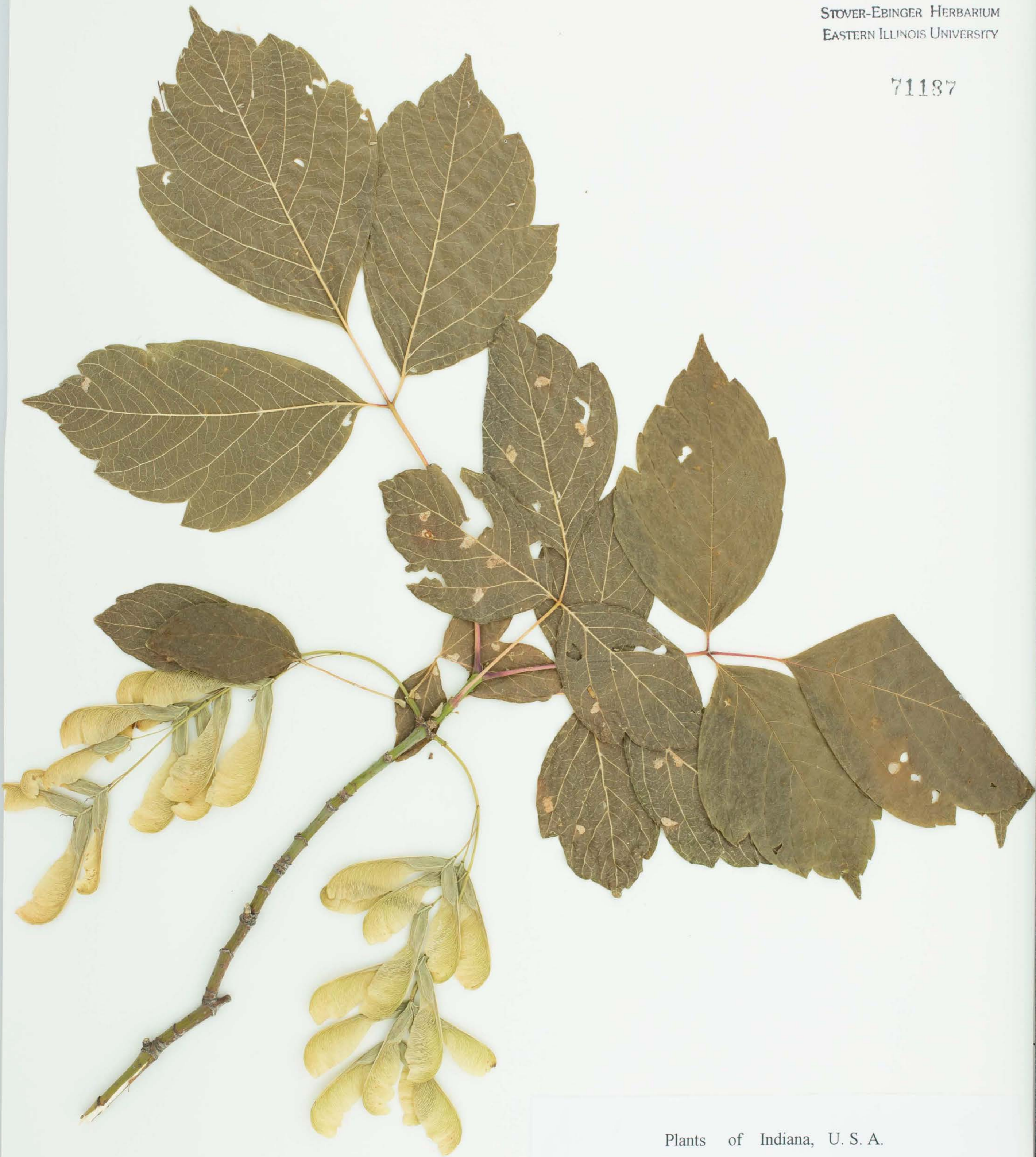
Sapindaceae, *Acer negundo*, L. U. S. A., Indiana, Marion, Indianapolis: Southport Road at W side of Interstate Highway 65. Elevation 775 feet., 23-Jun-2005, Gordon C. Tucker, 14111, (EIU). Stover-Ebinger Herbarium, Eastern Illinois University. http://thekeep.eiu.edu/herbarium_specimens_byname/7573

This Specimen is brought to you for free and open access by the Stover-Ebinger Herbarium at The Keep. It has been accepted for inclusion in Specimens by Name by an authorized administrator of The Keep. For more information, please contact tabruns@eiu.edu.



STOVER-EBINGER HERBARIUM
EASTERN ILLINOIS UNIVERSITY

71187



Plants of Indiana, U. S. A.

***Acer negundo* L.**

Family: Aceraceae

Marion County

39.6655°N 86.1278°W

Indianapolis: Southport Road at W side of Interstate Highway 65.

Elevation 775 feet.

Habitat: Shrubby thickets along stream.

Notes: Plentiful trees 4-6 m tall.

23 Jun 2005

Gordon C. Tucker 14111

Stover-Ebinger Herbarium (EIU) Eastern Illinois University

