

10-1-1966

# Acer saccharum Marshall

Bart Moore

Follow this and additional works at: [http://thekeep.eiu.edu/herbarium\\_specimens\\_byname](http://thekeep.eiu.edu/herbarium_specimens_byname)



Part of the [Botany Commons](#)

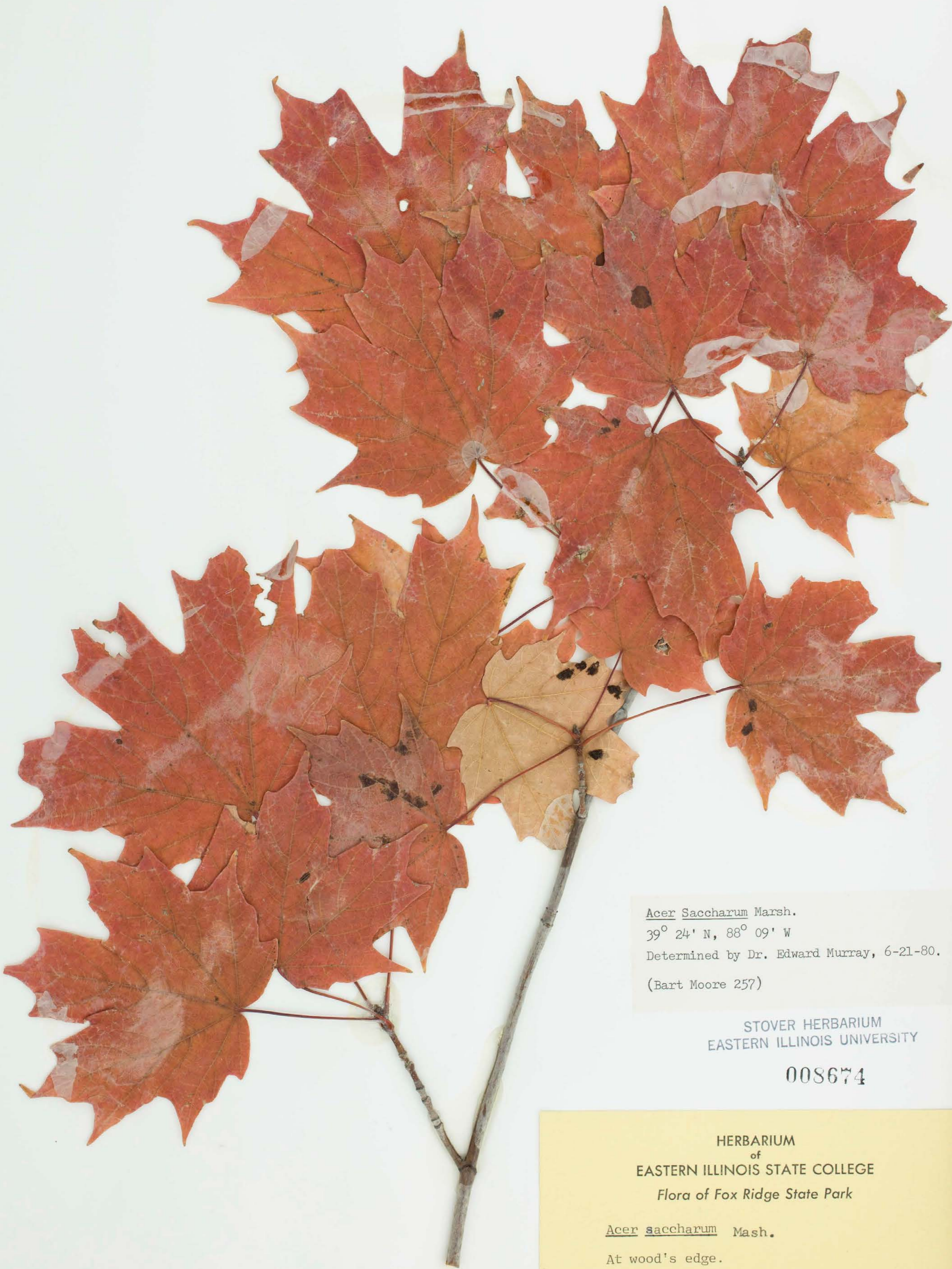
---

## Recommended Citation

Sapindaceae, *Acer saccharum*, Marshall. USA, illinois, Coles, Fox Ridge State Park, sec 15, T11N R9E, 39.4, -88.15, 1966-10-01, Moore, Bart, 257, (EIU). Stover-Ebinger Herbarium, Eastern Illinois University. [http://thekeep.eiu.edu/herbarium\\_specimens\\_byname/6128](http://thekeep.eiu.edu/herbarium_specimens_byname/6128)

This Specimen is brought to you for free and open access by the Stover-Ebinger Herbarium at The Keep. It has been accepted for inclusion in Specimens by Name by an authorized administrator of The Keep. For more information, please contact [tabruns@eiu.edu](mailto:tabruns@eiu.edu).





Acer Saccharum Marsh.  
39° 24' N, 88° 09' W  
Determined by Dr. Edward Murray, 6-21-80.  
(Bart Moore 257)

STOVER HERBARIUM  
EASTERN ILLINOIS UNIVERSITY

008674

HERBARIUM  
of  
EASTERN ILLINOIS STATE COLLEGE  
Flora of Fox Ridge State Park

Acer saccharum Mash.

At wood's edge.

Date Oct. 1, 1966 Collected by Bart Moore 257  
Location Coles County, Illinois

Sec 13 T11NR9E

