

10-1-1963

# Acer saccharum Marshall

B. Berkson

Follow this and additional works at: [http://thekeep.eiu.edu/herbarium\\_specimens\\_byname](http://thekeep.eiu.edu/herbarium_specimens_byname)



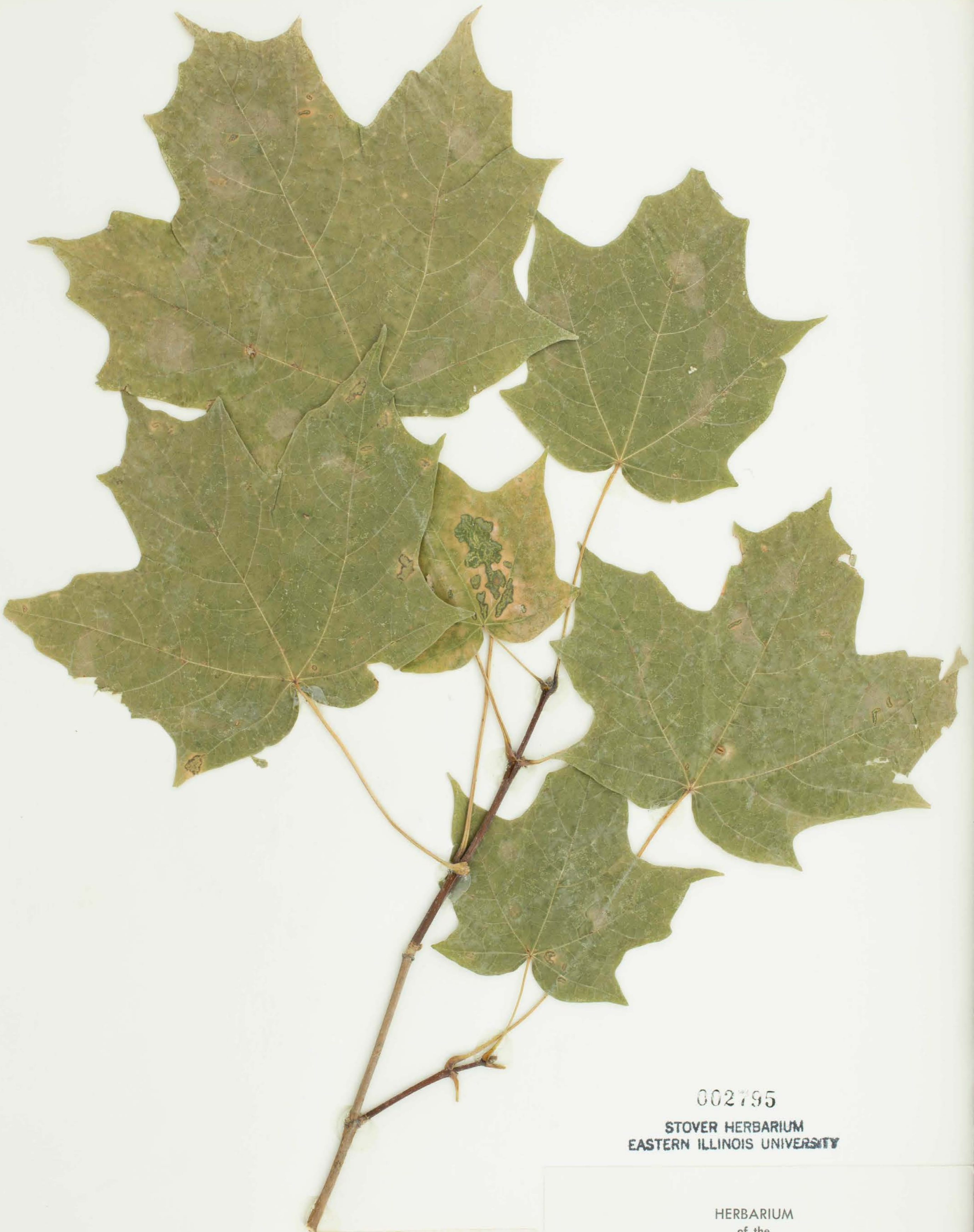
Part of the [Botany Commons](#)

---

## Recommended Citation

Sapindaceae, *Acer saccharum*, Marshall. USA, Illinois, Coles, Burgner Acres Legal: Sect. 1T12N R8E, 1963-10-01, Berkson, B., 2795, (EIU). Stover-Ebinger Herbarium, Eastern Illinois University. [http://thekeep.eiu.edu/herbarium\\_specimens\\_byname/2579](http://thekeep.eiu.edu/herbarium_specimens_byname/2579)

This Specimen is brought to you for free and open access by the Stover-Ebinger Herbarium at The Keep. It has been accepted for inclusion in Specimens by Name by an authorized administrator of The Keep. For more information, please contact [tabruns@eiu.edu](mailto:tabruns@eiu.edu).



*Acer Saccharum* Marsh. COLES COUNTY  
B. Berkson, 1963.  
Determined by  
Edward Murray, 6-22-1980.

002795  
STOVER HERBARIUM  
EASTERN ILLINOIS UNIVERSITY

HERBARIUM  
of the  
EASTERN ILLINOIS UNIVERSITY

ACER saccharum Marsh.

Date 10-1-63 Collected by B. Berkson

Location Burgner Acres

Sec 1 T12N R8E