

9-9-1969

Acer saccharum Marshall

John E. Ebinger

Eastern Illinois University, jeebinger@eiu.edu

Follow this and additional works at: http://thekeep.eiu.edu/herbarium_specimens_byname

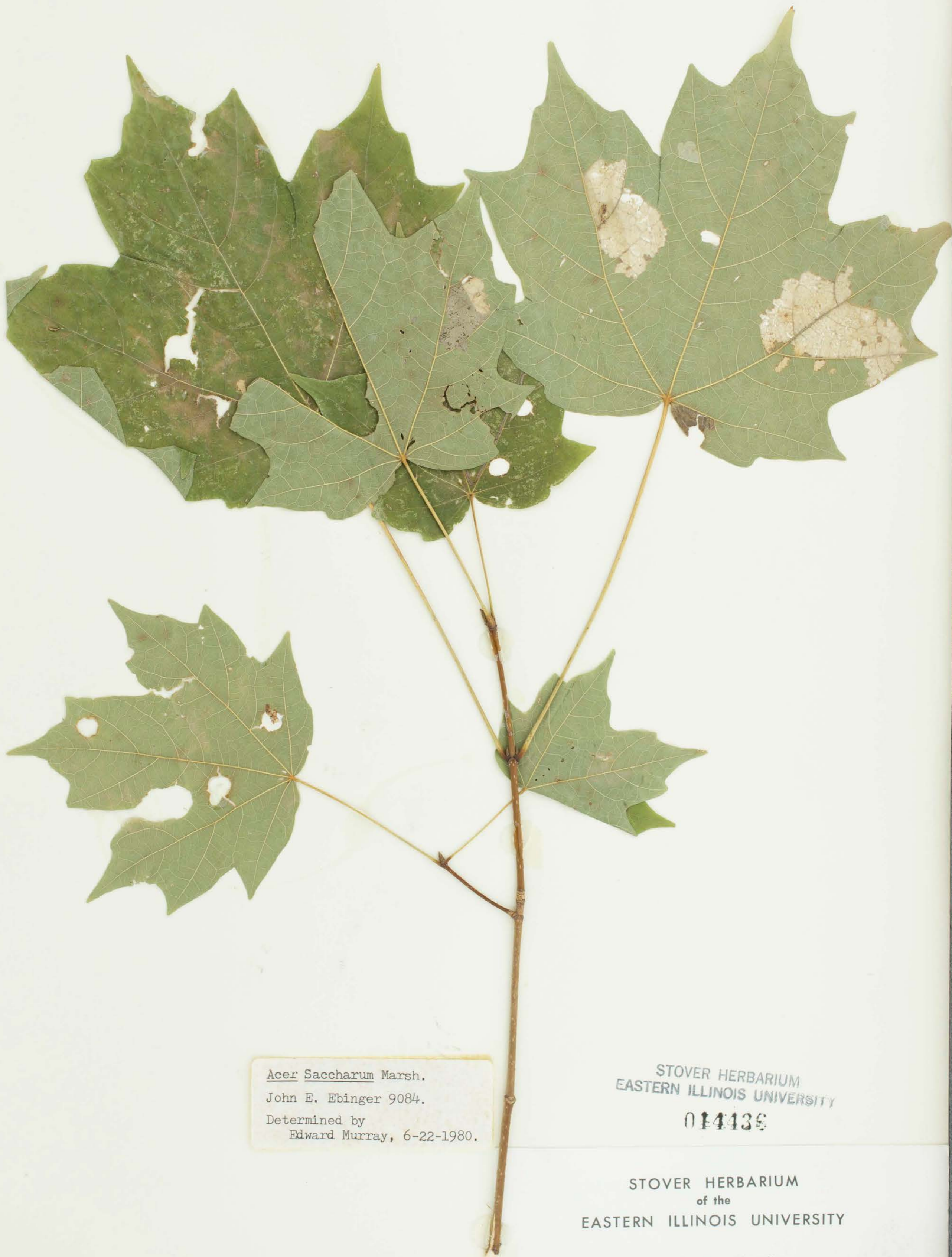


Part of the [Botany Commons](#)

Recommended Citation

Sapindaceae, *Acer saccharum*, Marshall. USA, Illinois, Clark, Rocky Branch Nature Preserve; Sec 29&30 T12N R12W., 1969-09-09, Ebinger, John E., 9084, (EIU). Stover-Ebinger Herbarium, Eastern Illinois University. http://thekeep.eiu.edu/herbarium_specimens_byname/20616

This Specimen is brought to you for free and open access by the Stover-Ebinger Herbarium at The Keep. It has been accepted for inclusion in Specimens by Name by an authorized administrator of The Keep. For more information, please contact tabruns@eiu.edu.



Acer Saccharum Marsh.
John E. Ebinger 9084.
Determined by
Edward Murray, 6-22-1980.

STOVER HERBARIUM
EASTERN ILLINOIS UNIVERSITY
014436

STOVER HERBARIUM
of the
EASTERN ILLINOIS UNIVERSITY

Acer saccharum Marsh.
Tree 10 m tall in lowland woods.

Date 9 Sept. 1969 Collected by JE Ebinger 9084
Location ROCKY BRANCH NATURE PRESERVE
Clark County, Illinois
Section 29 and 30
T12N, R12W