

4-27-2004

Comptonia peregrina (L.) J.M. Coult.

Kerry Barringer

Jinshaung Ma

Follow this and additional works at: http://thekeep.eiu.edu/herbarium_specimens_byname



Part of the [Botany Commons](#)

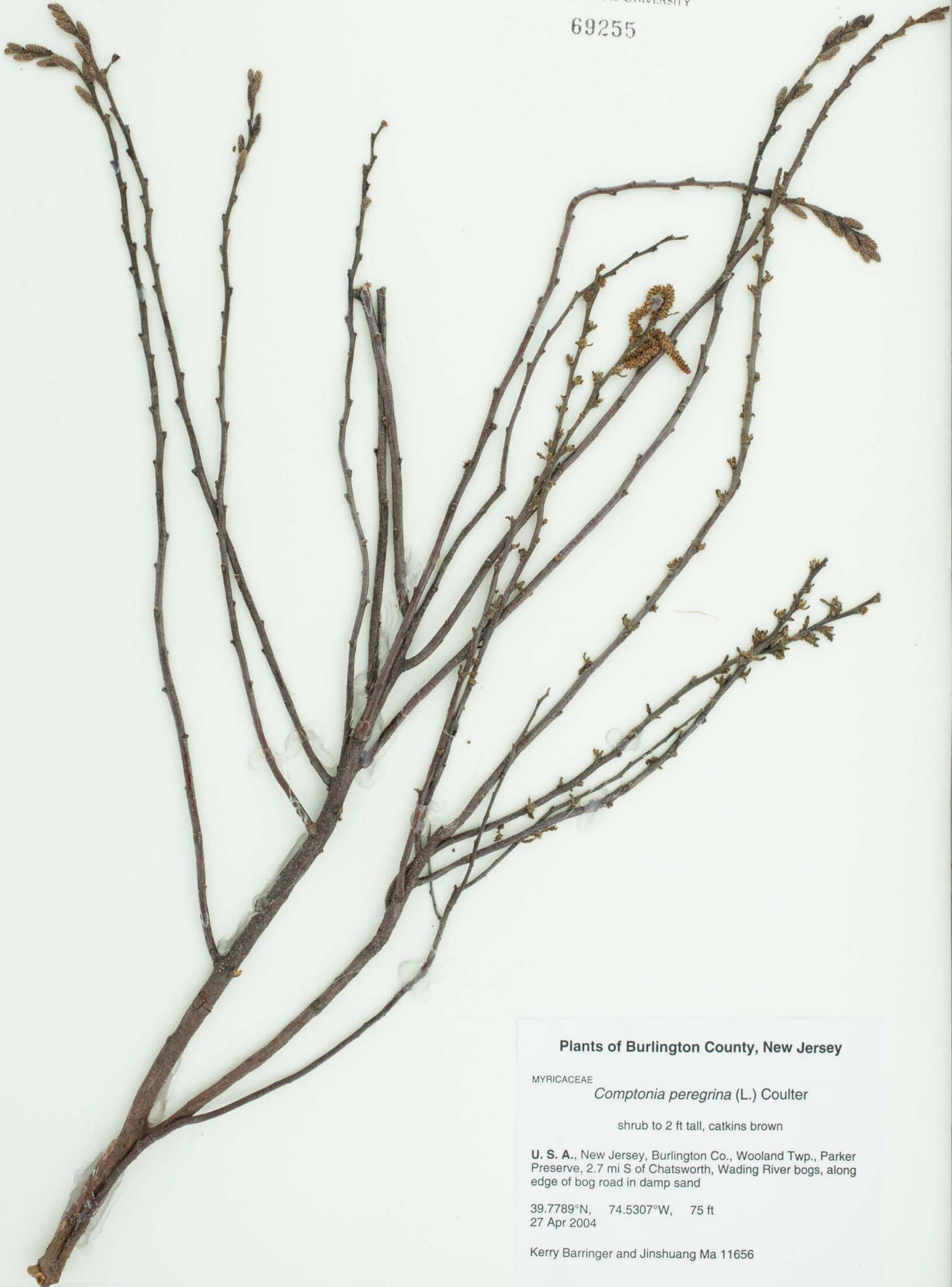
Recommended Citation

Myricaceae, *Comptonia peregrina*, (L.) J.M. Coult. USA, New Jersey, Burlington, Parker Preserve, 2.7 miles S of Chatsworth., 39.7789, -74.5307, 2004-04-27, Barringer, Kerry, 11656, (EIU). Stover-Ebinger Herbarium, Eastern Illinois University. http://thekeep.eiu.edu/herbarium_specimens_byname/20460



STOVER-EBINGER HERBARIUM
EASTERN ILLINOIS UNIVERSITY

69255



Plants of Burlington County, New Jersey

MYRICACEAE

Comptonia peregrina (L.) Coulter

shrub to 2 ft tall, catkins brown

U. S. A., New Jersey, Burlington Co., Wooland Twp., Parker Preserve, 2.7 mi S of Chatsworth, Wading River bogs, along edge of bog road in damp sand

39.7789°N, 74.5307°W, 75 ft
27 Apr 2004

Kerry Barringer and Jinshuang Ma 11656

From Brooklyn Botanic Garden