

6-18-1973

Lysimachia lanceolata Walter

W. Pichon

Hampton Parker

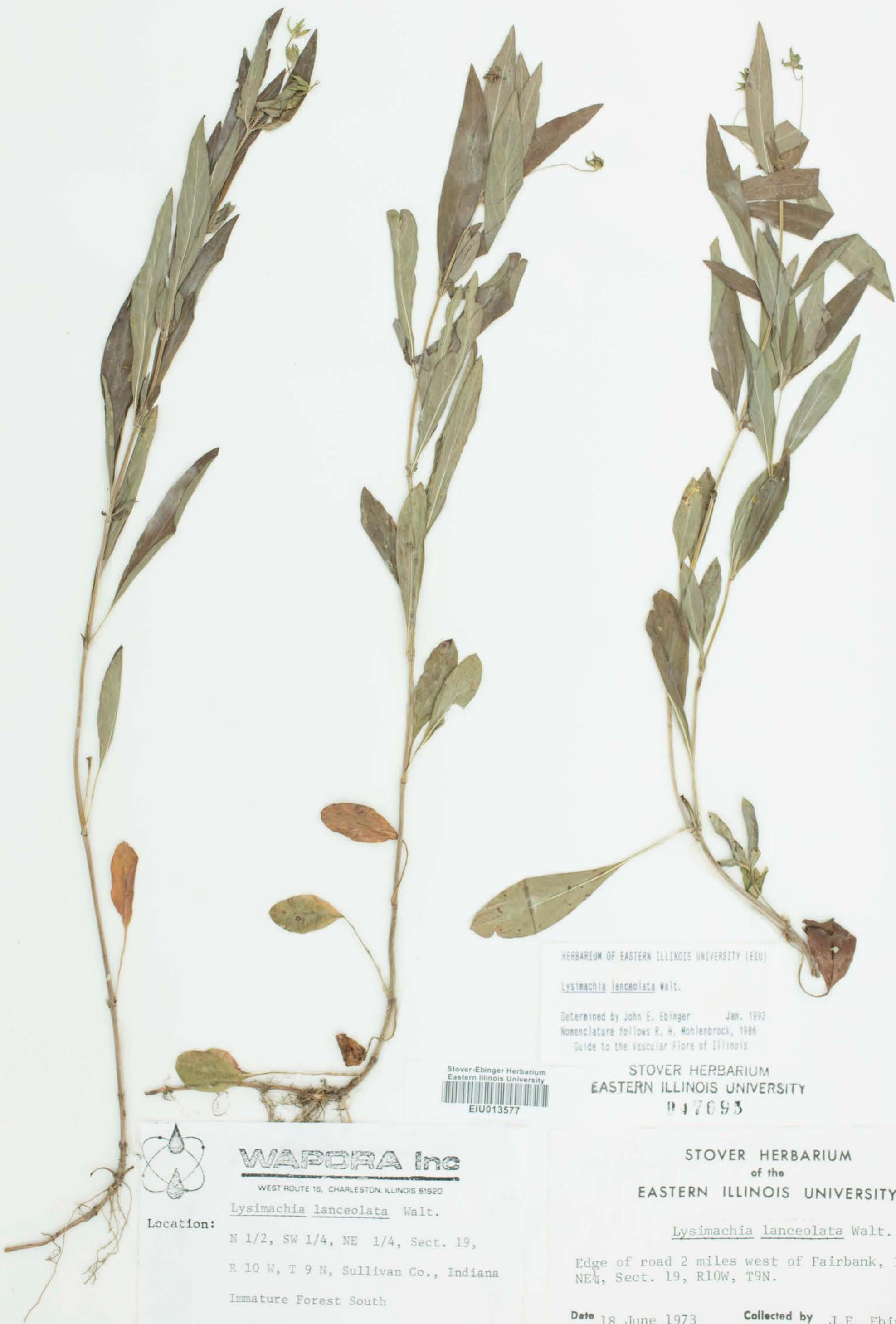
Follow this and additional works at: http://thekeep.eiu.edu/herbarium_specimens_byname



Part of the [Botany Commons](#)

Recommended Citation

Primulaceae, *Lysimachia lanceolata*, Walter. USA, Indiana, Sullivan, N 1/2, SW 1/4, NE 1/4, Sect. 19 R 10 W, T 9 N, Sullivan Co., Indiana. 2 miles W. of Fairbank IN. Immature Forest South, 1973-06-18, Pichon, W., 308, (EIU). Stover-Ebinger Herbarium, Eastern Illinois University. http://thekeep.eiu.edu/herbarium_specimens_byname/19809



HERBARIUM OF EASTERN ILLINOIS UNIVERSITY (EIU)

Lysimachia lanceolata Walt.

Determined by John E. Ebinger Jan. 1992
Nomenclature follows R. H. Mohlenbrock, 1986
Guide to the Vascular Flora of Illinois

STOVER HERBARIUM
EASTERN ILLINOIS UNIVERSITY
047093



WAPORA Inc

WEST ROUTE 15, CHARLESTON, ILLINOIS 61920

Lysimachia lanceolata Walt.

Location:

N 1/2, SW 1/4, NE 1/4, Sect. 19,
R 10 W, T 9 N, Sullivan Co., Indiana
Immature Forest South

Date: 6-18-73 Coll. No. 308
Coll. W. Pichon & H. Parker Project: I-38

STOVER HERBARIUM
of the
EASTERN ILLINOIS UNIVERSITY

Lysimachia lanceolata Walt.

Edge of road 2 miles west of Fairbank, Ind.
NE 1/4, Sect. 19, R10W, T9N.

Date 18 June 1973 Collected by J.E. Ebinger 12957
Location Sullivan Co., Indiana