

5-22-2000

Phemeranthus calycinus (Engelm.) Kiger

John E. Ebinger

Eastern Illinois University, jeebinger@eiu.edu

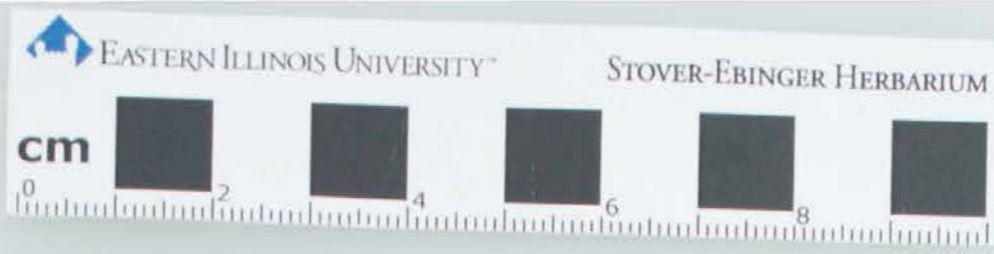
Follow this and additional works at: http://thekeep.eiu.edu/herbarium_specimens_byname



Part of the [Botany Commons](#)

Recommended Citation

Montiaceae, *Phemeranthus calycinus*, (Engelm.) Kiger. USA, Illinois, Randolph, Top of sandstone cliff in shallow soil just behind cliff top, Leanderville, IL. Legal: SE1/4 SW1/4, Sec. 17, T7S, R5W, 2000-05-22, Ebinger, John E., 28454, (EIU). Stover-Ebinger Herbarium, Eastern Illinois University. http://thekeep.eiu.edu/herbarium_specimens_byname/19774



STOVER-EBINGER HERBARIUM
EASTERN ILLINOIS UNIVERSITY

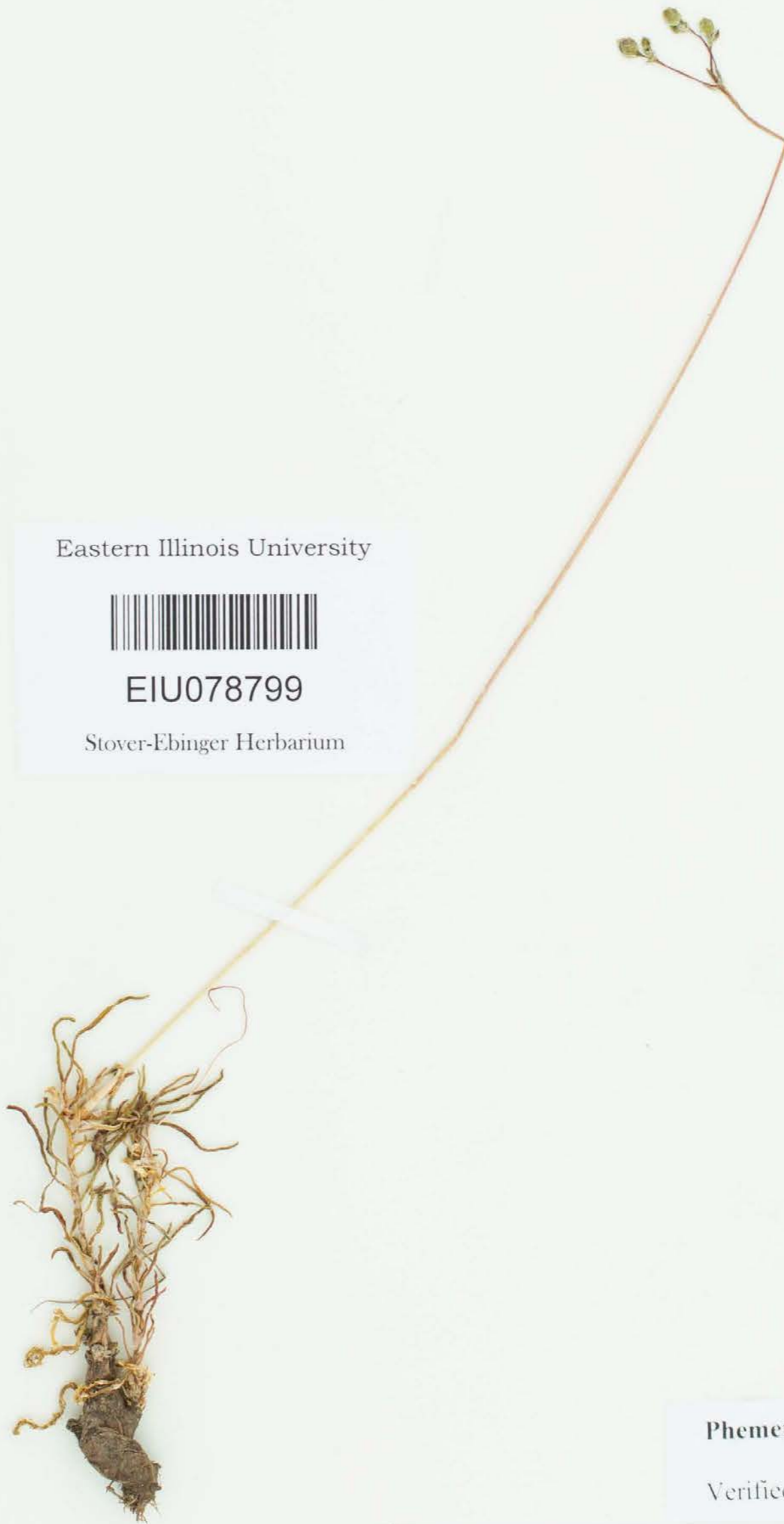
59240

Eastern Illinois University



EIU078799

Stover-Ebinger Herbarium



Phemeranthus calycinus (Engelm.) Kiger

Verified by Dr. Stewart Ware 2014

STOVER-EBINGER HERBARIUM
EASTERN ILLINOIS UNIVERSITY - CHARLESTON

Plants of: ILLINOIS County: Randolph

Talinum calycinum Engelm.

Top of sandstone cliff in shallow soil just behind cliff top, Leanderville, Ill.
SE1/4 SW1/4 Sec 17 T7S R5W

PORTULACACEAE

Collector: John E. Ebinger 28454
Date: 22 May 2000