

9-4-1978

Morus rubra L.

John E. Ebinger

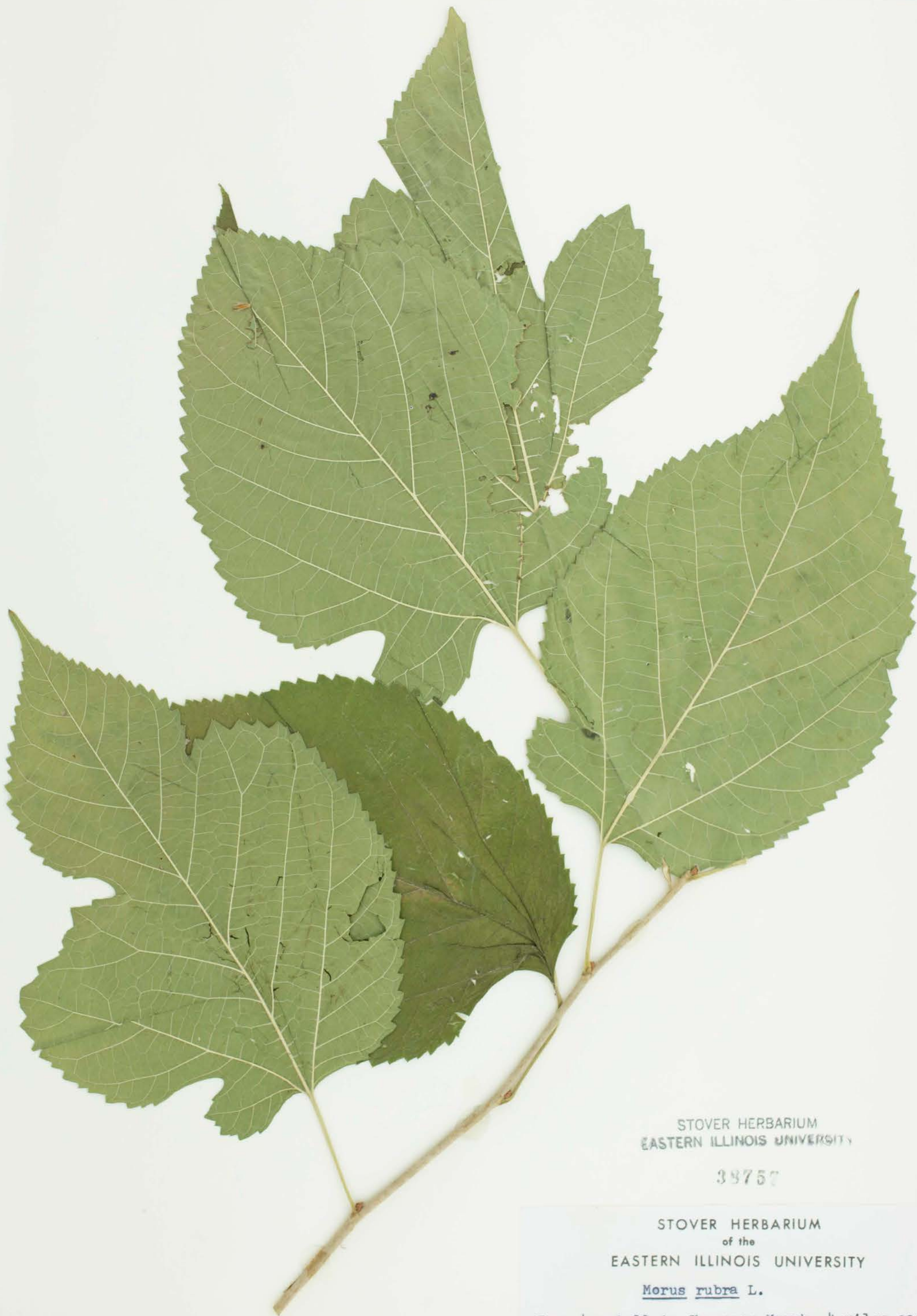
Follow this and additional works at: http://thekeep.eiu.edu/herbarium_specimens_byname

Part of the [Botany Commons](#)

Recommended Citation

Moraceae, *Morus rubra*, L. USA, Illinois, Lawrence, Chauncey Marsh, 3 miles E of Chauncey, IL. Sect. 30 T5N R12W, 1978-09-04, John E. Ebinger, 17336, (EIU). Stover-Ebinger Herbarium, Eastern Illinois University. http://thekeep.eiu.edu/herbarium_specimens_byname/19002

This Specimen is brought to you for free and open access by the Stover-Ebinger Herbarium at The Keep. It has been accepted for inclusion in Specimens by Name by an authorized administrator of The Keep. For more information, please contact tabruns@eiu.edu.



STOVER HERBARIUM
EASTERN ILLINOIS UNIVERSITY

38757

STOVER HERBARIUM
of the
EASTERN ILLINOIS UNIVERSITY

Morus rubra L.

Tree 4 m tall in Chauncey Marsh, 4 miles east
of Chauncey, Ill. Sect. 30 T5N R12W.

Date 4 Sept. 1978 Collected by John E. Ebinger
Location Lawrence Co., Illinois 17336

HERBARIUM OF EASTERN ILLINOIS UNIVERSITY (EIU)

Morus rubra L.

Determined by John E. Ebinger Dec. 1991
Nomenclature follows R. W. Mohlenbrock, 1986
Guide to the Vascular Flora of Illinois

Stover-Ebinger Herbarium
Eastern Illinois University
EIU013490