

6-17-1974

# Morus alba var. alba

R. W. Nyboer

Follow this and additional works at: [http://thekeep.eiu.edu/herbarium\\_specimens\\_byname](http://thekeep.eiu.edu/herbarium_specimens_byname)

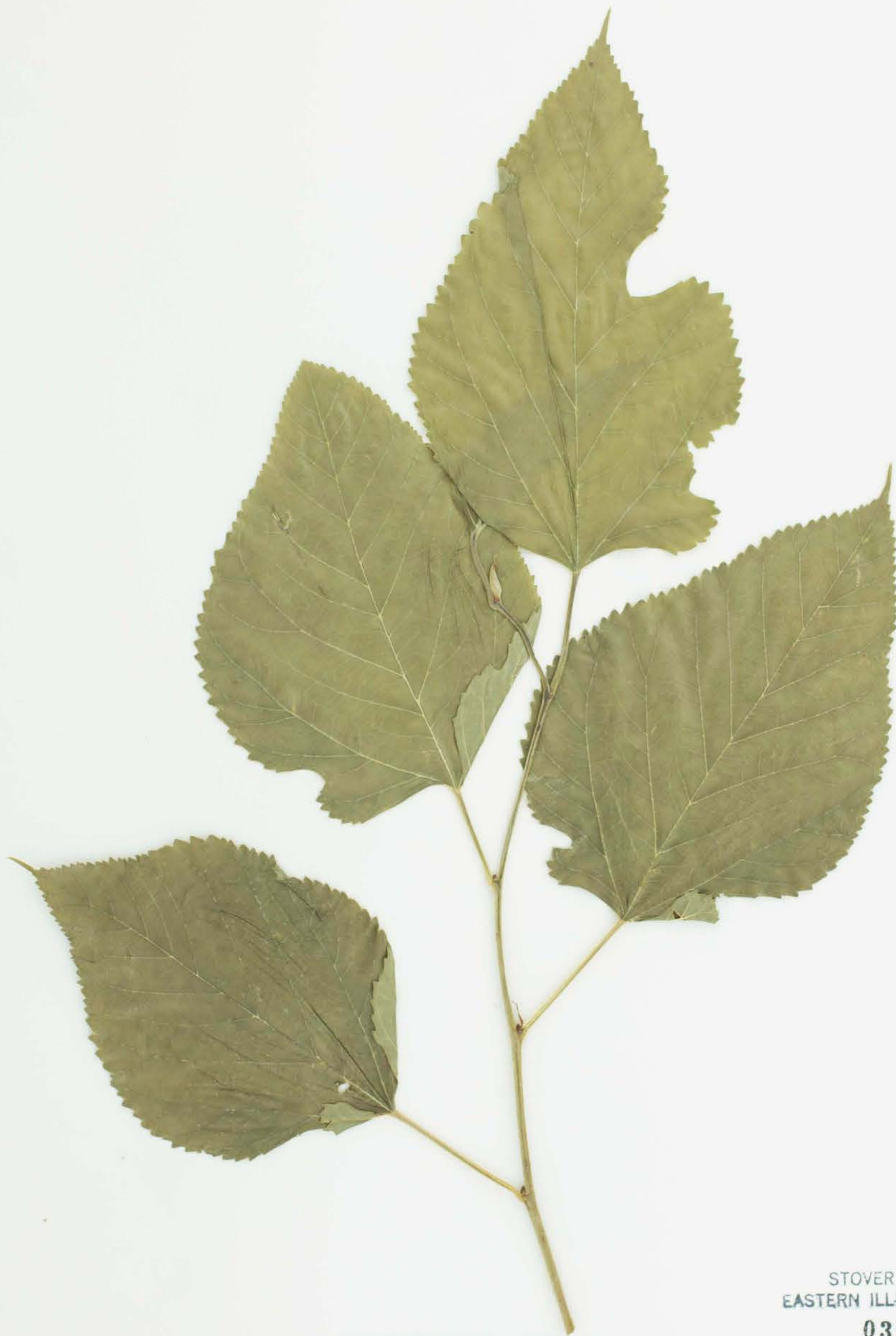


Part of the [Botany Commons](#)

---

## Recommended Citation

Moraceae, Morus alba, USA, Illinois, Clark, Terrace forest 5 miles ESE of Westfield, Ill. Clark Co., Illinois SW1/4, Sect. 7, R13W, T11N, 1974-06-17, Nyboer, R. W., 133, (EIU). Stover-Ebinger Herbarium, Eastern Illinois University. [http://thekeep.eiu.edu/herbarium\\_specimens\\_byname/18819](http://thekeep.eiu.edu/herbarium_specimens_byname/18819)



STOVER HERBARIUM  
EASTERN ILLINOIS UNIVERSITY  
032450

Stover-Ebinger Herbarium  
Eastern Illinois University  
EIU013304

HERBARIUM OF EASTERN ILLINOIS UNIVERSITY (EIU)

Morus alba L. var. alba

Determined by John E. Ebinger Dec. 1991  
Nomenclature follows R. H. Mohlenbrock, 1986  
Guide to the Vascular Flora of Illinois

Morus alba L.

Feb. 1980

Determined by John E. Ebinger  
Eastern Illinois University - Charleston, Illinois

STOVER HERBARIUM  
of the  
EASTERN ILLINOIS UNIVERSITY  
Morus ~~alba~~ L.

Terrace forest 5 miles ESE of Westfield,  
Ill.

Date 17 Jun 74 Collected by R.W. Nyboer 133  
Location Clark Co., Illinois  
SW $\frac{1}{4}$ , Sect. 7, R13W, T11N