

9-21-2004

# Ampelopsis cordata Michx.

John E. Ebinger

*Eastern Illinois University, jeebinger@eiu.edu*

Loy R. Phillippe

*Illinois Natural History Survey, rickp@inhs.illinois.edu*

Follow this and additional works at: [http://thekeep.eiu.edu/herbarium\\_specimens\\_byname](http://thekeep.eiu.edu/herbarium_specimens_byname)



Part of the [Botany Commons](#)

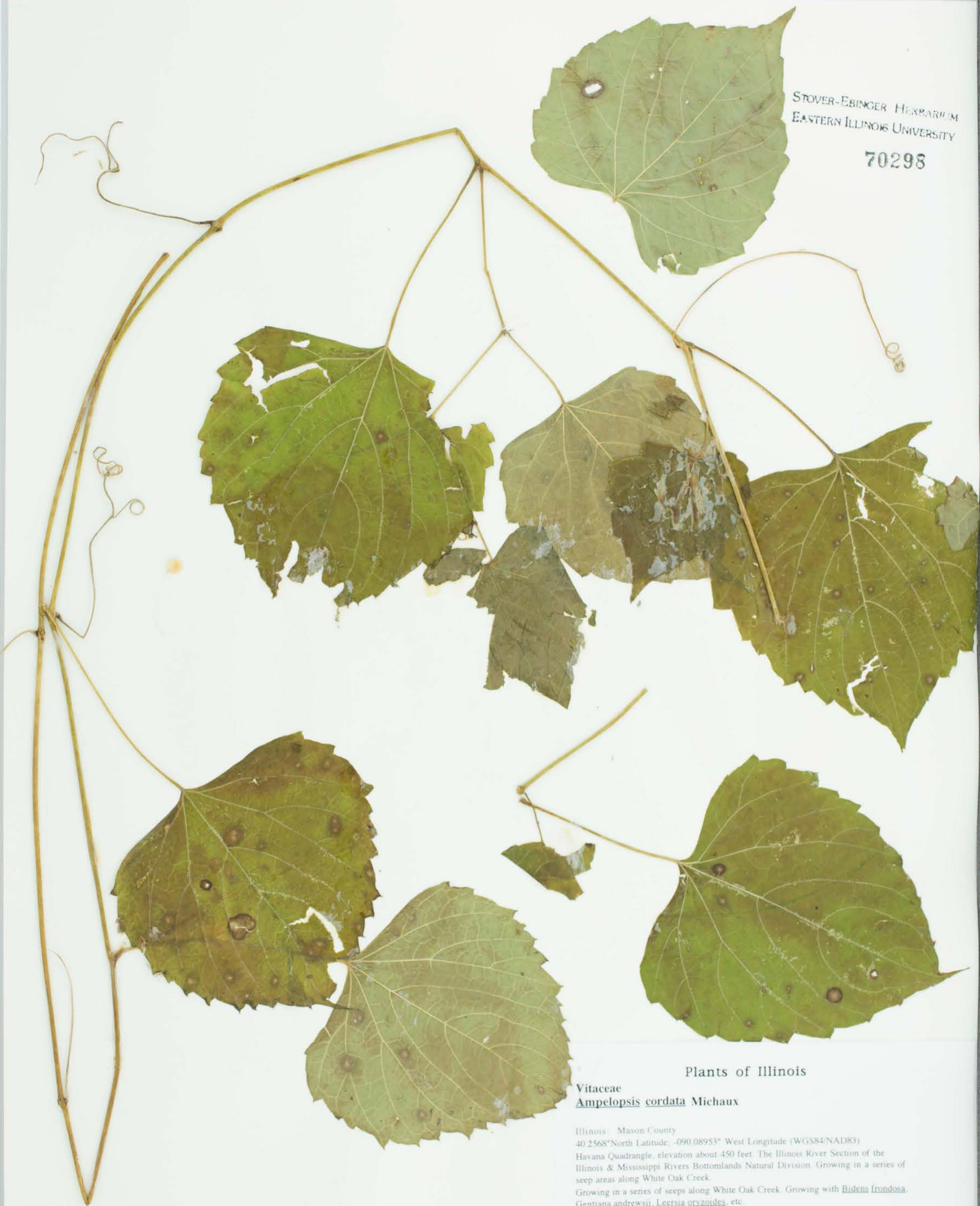
---

## Recommended Citation

Vitaceae, *Ampelopsis cordata*, Michx. USA, Illinois, Mason, Havana Quadrangle, elevation about 450 feet. The Illinois River Section of the Illinois & Mississippi Rivers Bottomlands Natural Division. Growing in a series of seep areas along White Oak Creek., 40.2568, -90.08953, 2004-09-21, Ebinger, John E., 37280, (EIU). Stover-Ebinger Herbarium, Eastern Illinois University.  
[http://thekeep.eiu.edu/herbarium\\_specimens\\_byname/18403](http://thekeep.eiu.edu/herbarium_specimens_byname/18403)



STOVER-EBINGER HERBARIUM  
EASTERN ILLINOIS UNIVERSITY  
70298



Plants of Illinois

Vitaceae  
*Ampelopsis cordata* Michaux

Illinois: Mason County  
40.2568° North Latitude; -090.08953° West Longitude (WGS84/NAD83)  
Havana Quadrangle, elevation about 450 feet. The Illinois River Section of the  
Illinois & Mississippi Rivers Bottomlands Natural Division. Growing in a series of  
seep areas along White Oak Creek.  
Growing in a series of seeps along White Oak Creek. Growing with *Bidens frondosa*,  
*Gentiana andrewsii*, *Leersia oryzoides*, etc.

Loy R. Phillippe & John E. Ebinger 37280  
21 September 2004