

6-14-1958

Lantana L.

J. Morello

A. R. Cuezco

Follow this and additional works at: [http://thekeep.eiu.edu/herbarium\\_specimens\\_byname](http://thekeep.eiu.edu/herbarium_specimens_byname)



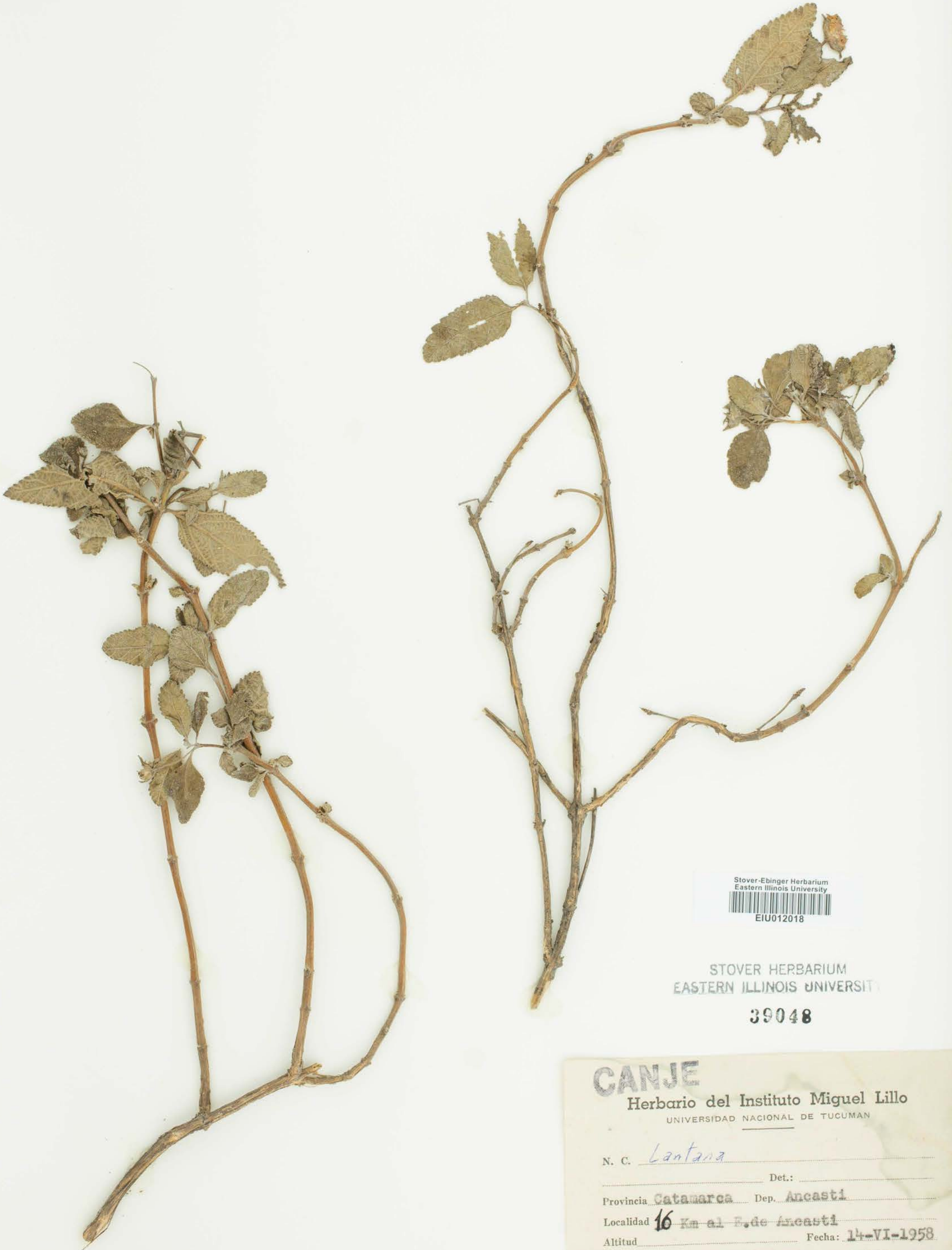
Part of the [Botany Commons](#)

---

#### Recommended Citation

Verbenaceae, *Lantana* , L. Argentina, Catamarca, 16 Km al E. de Ancasti, Morello, J., 1002, (EIU).  
Stover-Ebinger Herbarium, Eastern Illinois University. [http://thekeep.eiu.edu/  
herbarium\\_specimens\\_byname/17866](http://thekeep.eiu.edu/herbarium_specimens_byname/17866)

This Specimen is brought to you for free and open access by the Stover-Ebinger Herbarium at The Keep. It has been accepted for inclusion in Specimens by Name by an authorized administrator of The Keep. For more information, please contact [tabruns@eiu.edu](mailto:tabruns@eiu.edu).



Stover-Ebinger Herbarium  
Eastern Illinois University  
EIU012018

STOVER HERBARIUM  
EASTERN ILLINOIS UNIVERSITY

39048

CANJE

Herbario del Instituto Miguel Lillo  
UNIVERSIDAD NACIONAL DE TUCUMAN

N. C. Lantana  
Det.: \_\_\_\_\_  
Provincia Catamarca Dep. Ancasti  
Localidad 16 Km al E. de Ancasti  
Altitud \_\_\_\_\_ Fecha: 14-VI-1958  
Observaciones quebrachal de Ap. y cebil  
Leg.: Dr. J. Morello y A. R. Cuezco  
Plan "Genera et Species Plantarum Argentinarum"

1002

ENVENENADA