

10-6-2000

Acer saccharum Marshall

John E. Ebinger

Eastern Illinois University, jeebinger@eiu.edu

Follow this and additional works at: http://thekeep.eiu.edu/herbarium_specimens_byname



Part of the [Botany Commons](#)

Recommended Citation

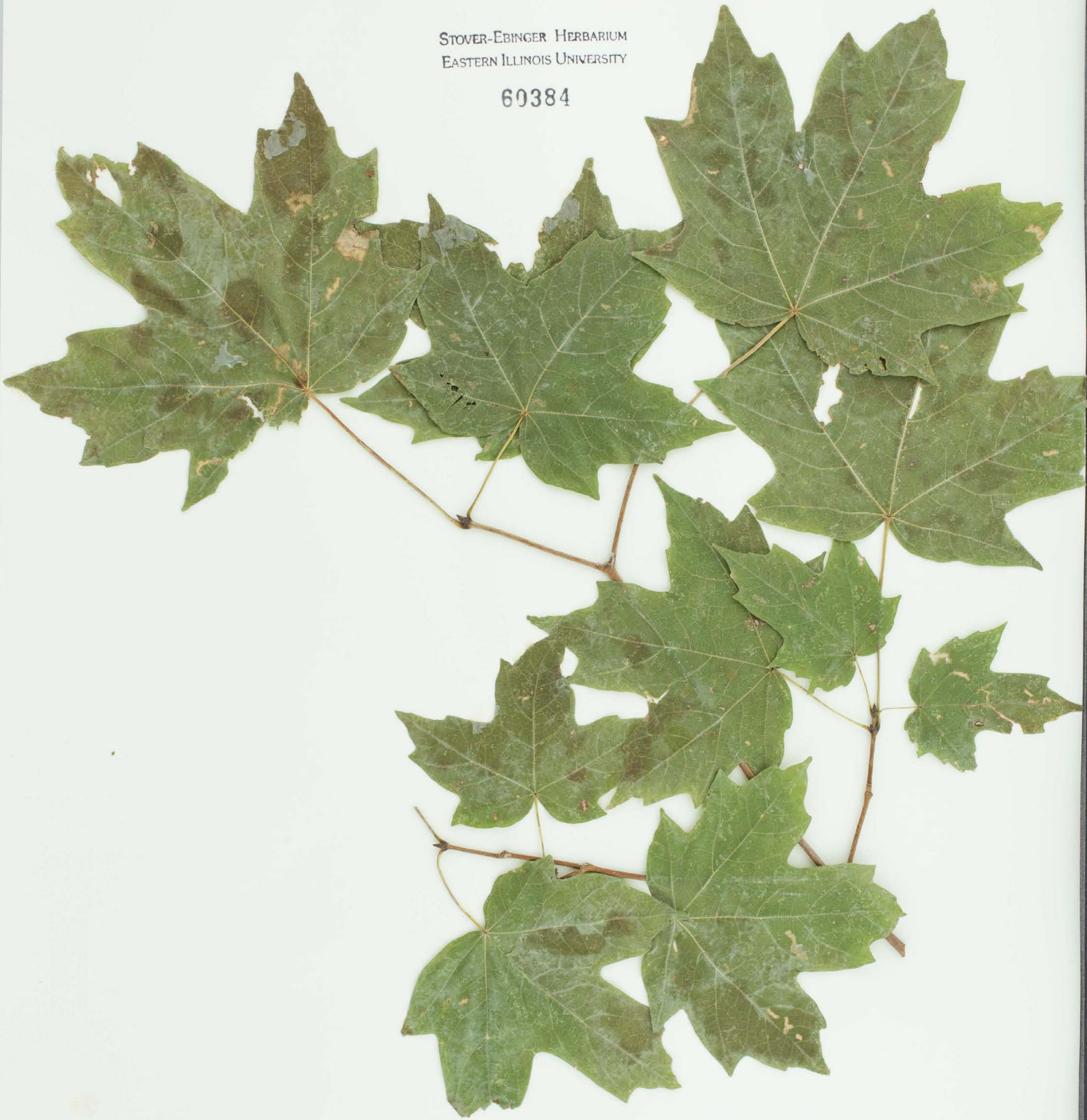
Sapindaceae, *Acer saccharum*, Marshall. USA, Illinois, Richland, At Big Creek Woods Mem. NP.; SW/4 SE/4 Sec 15 T3N R10E 3pm., 38.689485, -88.082949, 2000-10-06, Edgin, Bob, 3784, (EIU). Stover-Ebinger Herbarium, Eastern Illinois University. http://thekeep.eiu.edu/herbarium_specimens_byname/15856

This Specimen is brought to you for free and open access by the Stover-Ebinger Herbarium at The Keep. It has been accepted for inclusion in Specimens by Name by an authorized administrator of The Keep. For more information, please contact tabruns@eiu.edu.



STOVER-EBINGER HERBARIUM
EASTERN ILLINOIS UNIVERSITY

60384



HERBARIUM OF BOB EDGIN

SPECIMEN # 3784

Acer saccharum Marsh.

Aceraceae

Upland forest at Big Creek Woods Mem.
NP, Richland, Co, IL

SW/4, SE/4, SECT 15, T3N, R10E, 3PM

October 6, 2000

Verified by: J. E. Ebinger