

6-1-1916

Bulletin 52 - A Catalogue for the Seventeenth Year (1915-1916)

Eastern Illinois University

Follow this and additional works at: http://thekeep.eiu.edu/eiu_bulletin

Recommended Citation

Eastern Illinois University, "Bulletin 52 - A Catalogue for the Seventeenth Year (1915-1916)" (1916). *Eastern Illinois University Bulletin*. 152.

http://thekeep.eiu.edu/eiu_bulletin/152

This Article is brought to you for free and open access by the University Publications at The Keep. It has been accepted for inclusion in Eastern Illinois University Bulletin by an authorized administrator of The Keep. For more information, please contact tabruns@eiu.edu.

177

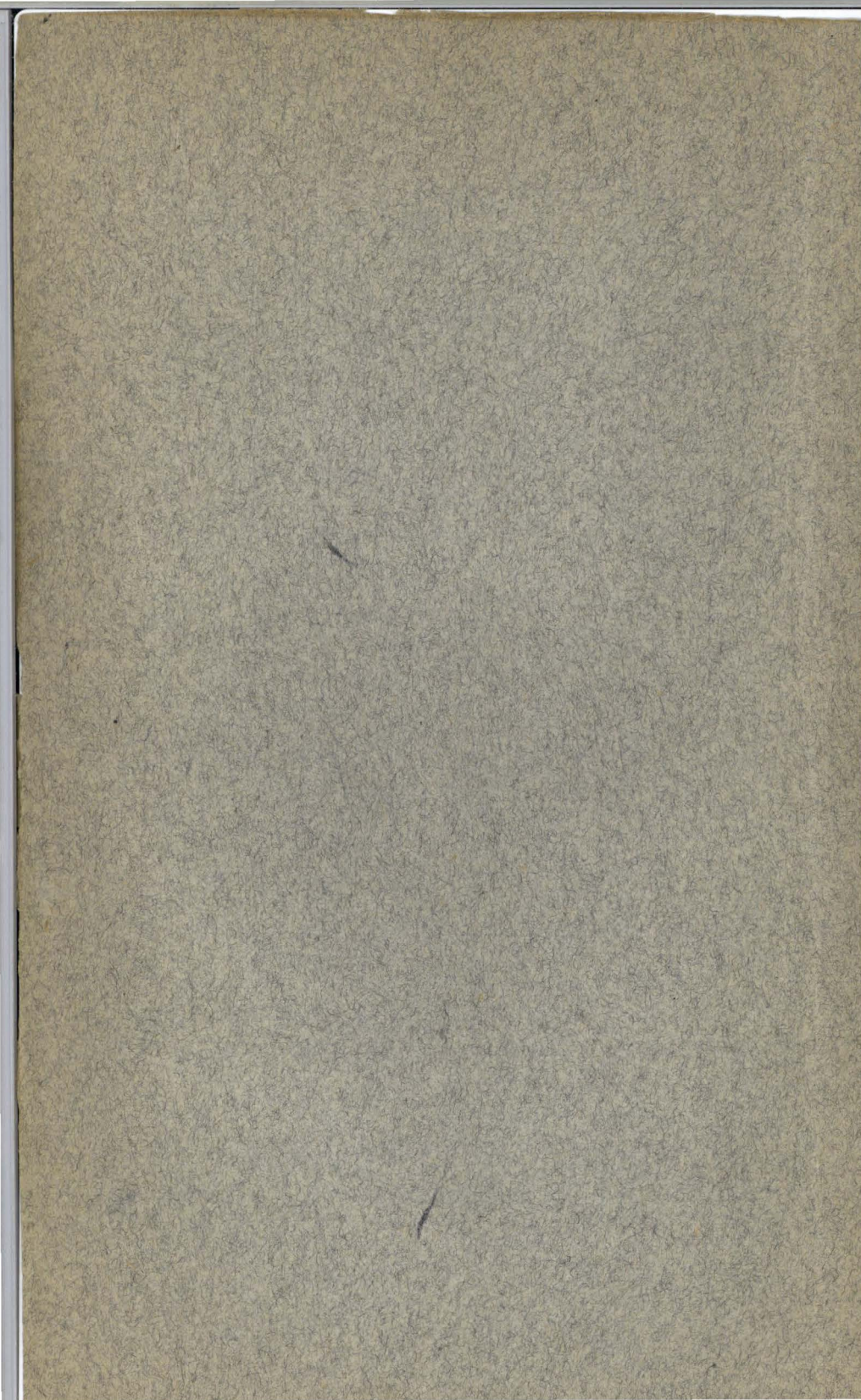
Save

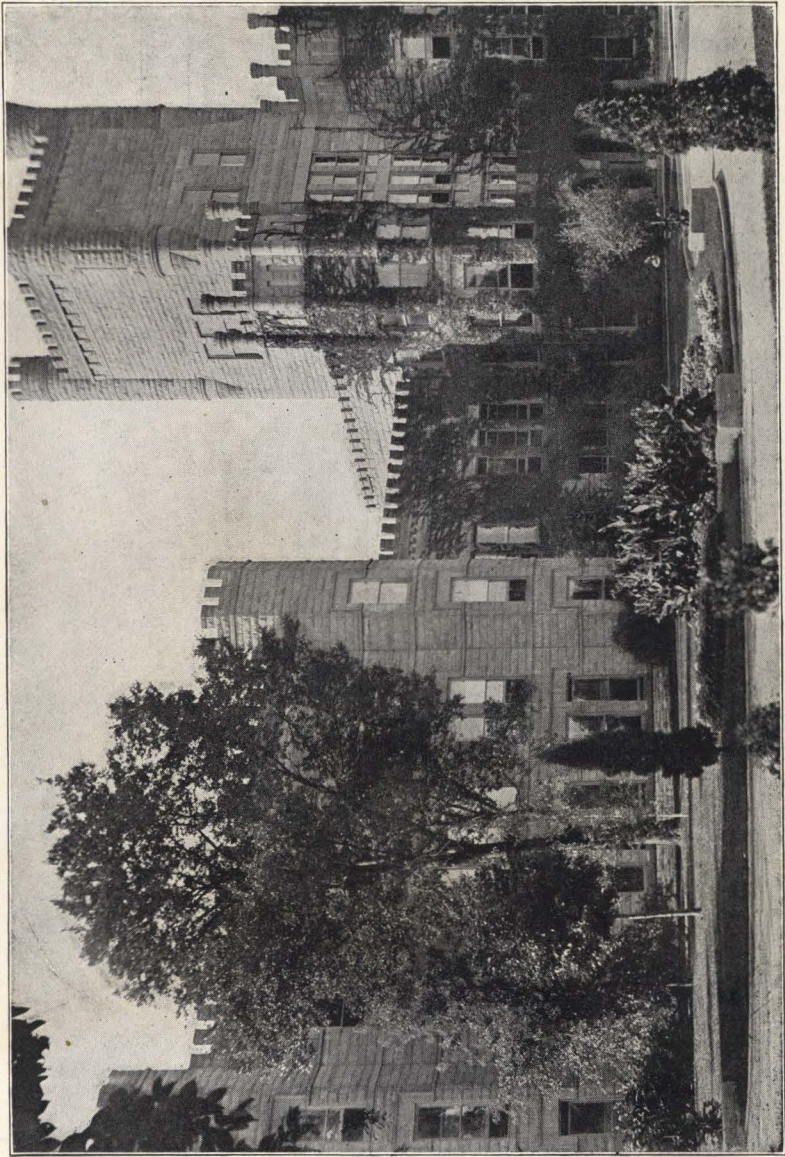
Bulletin

**EASTERN
ILLINOIS
S T A T E
N O R M A L
S C H O O L**

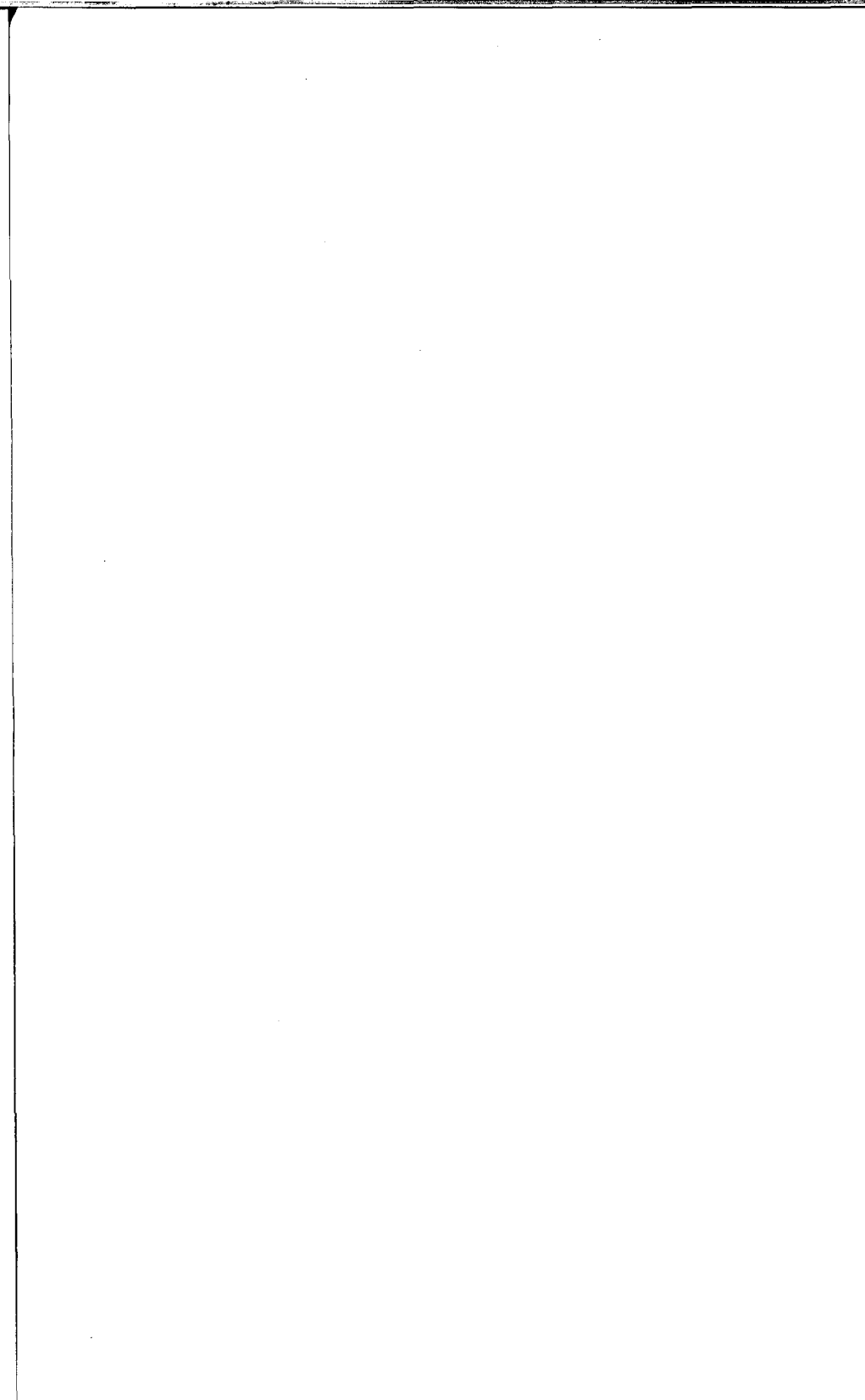
Charleston

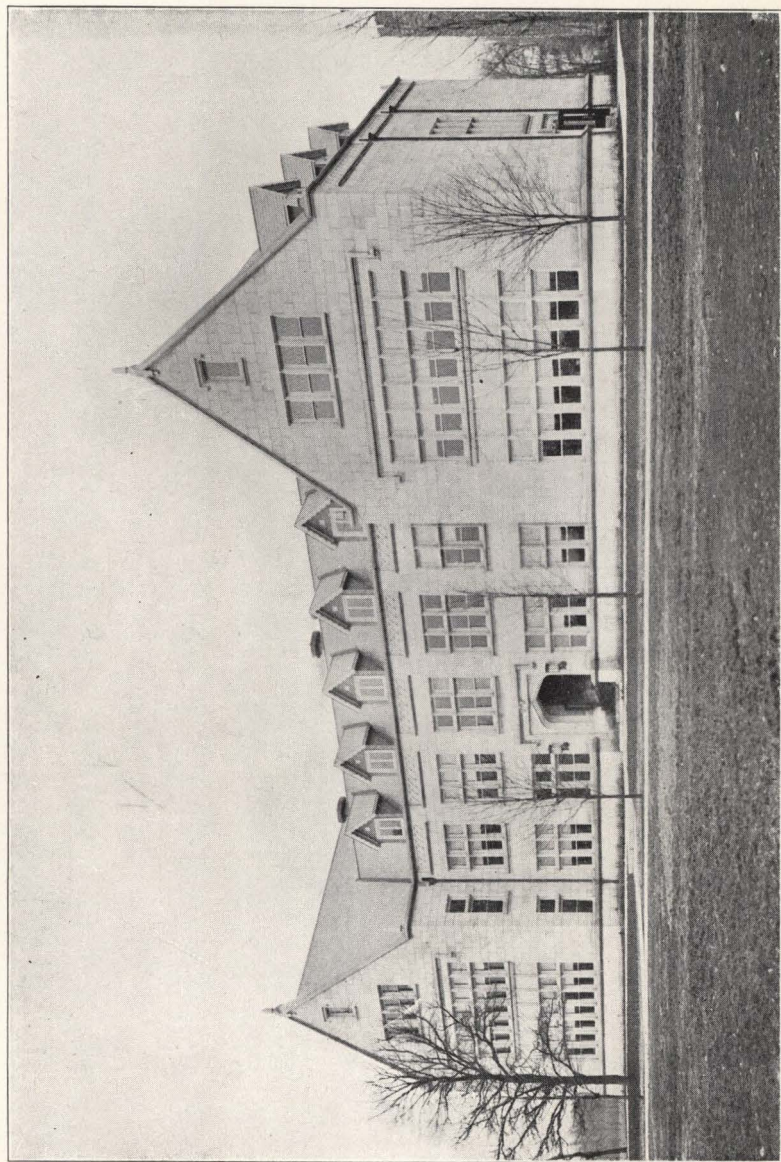
**A n n u a l
C a t a l o g u e
N u m b e r
1915-1916**



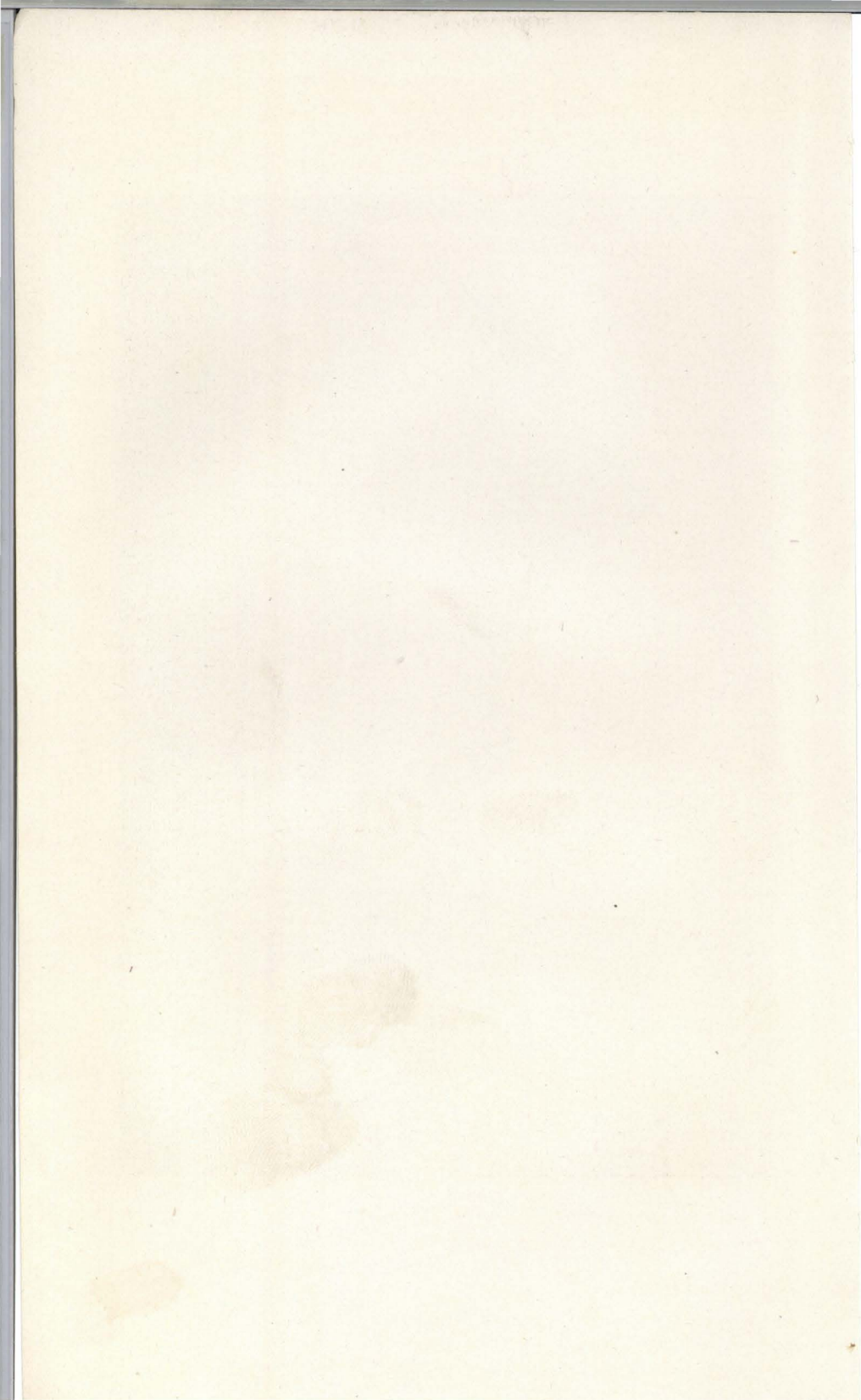


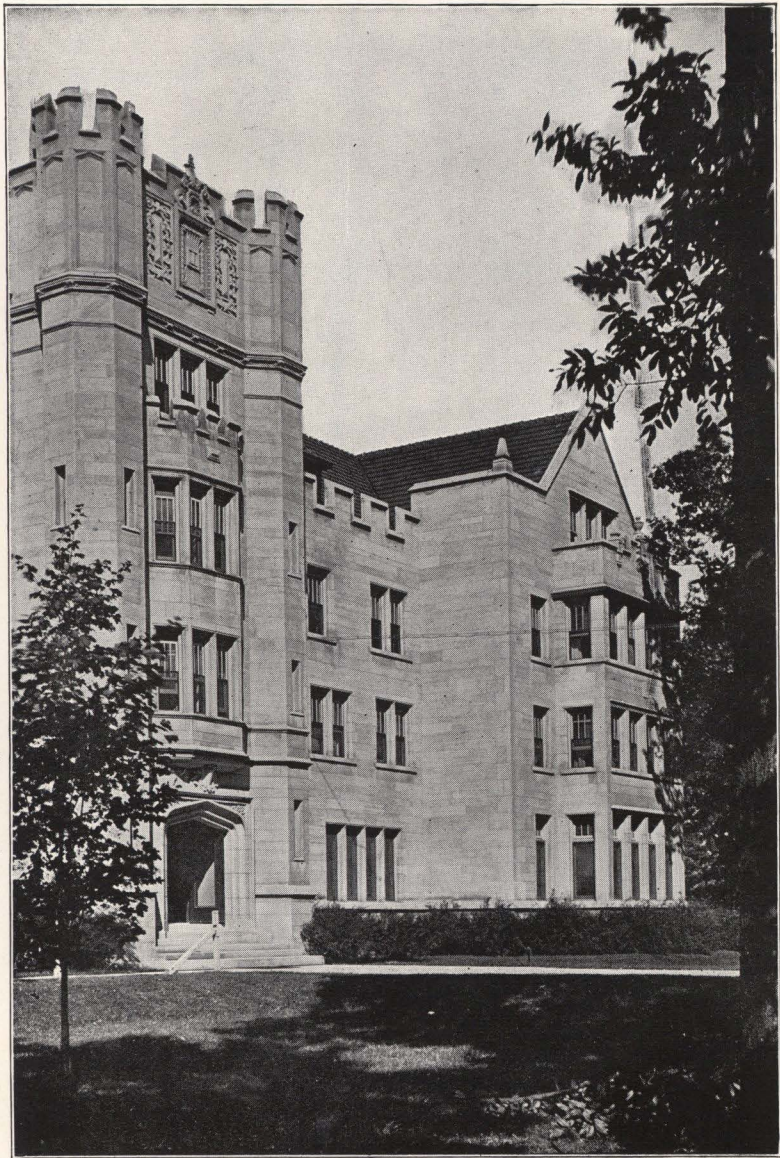
MAIN BUILDING





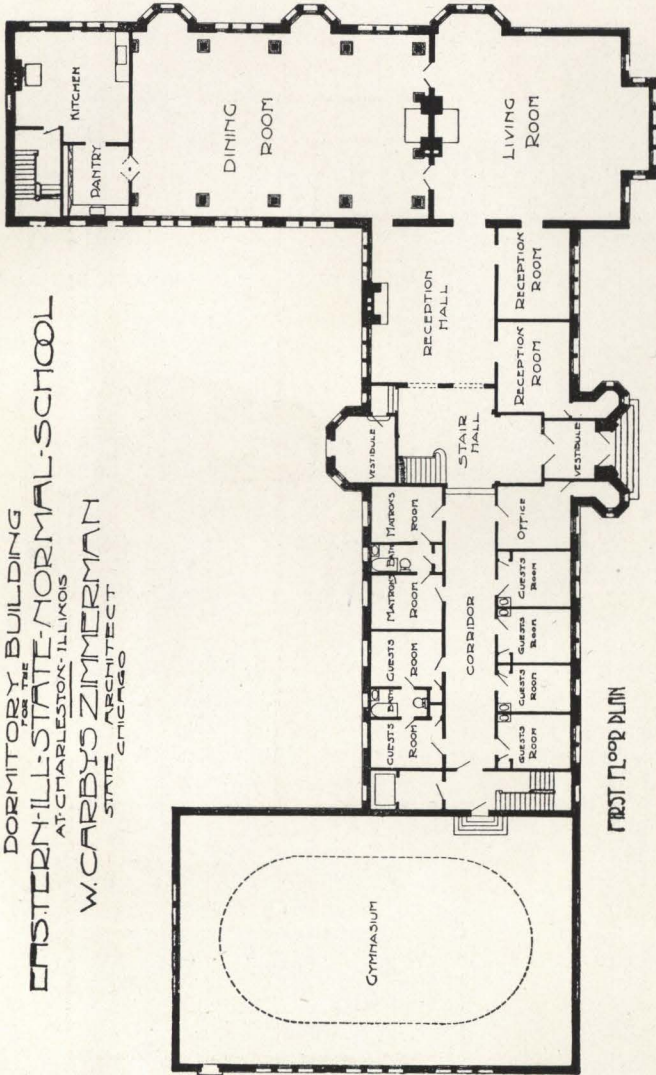
ELEMENTARY SCHOOL





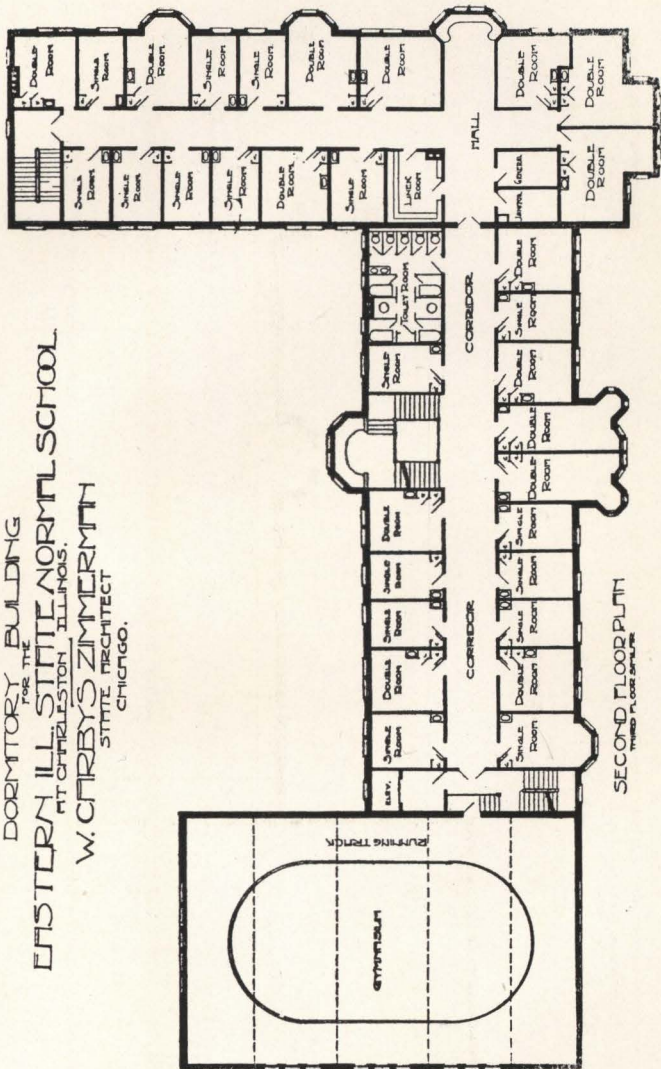
WOMAN'S BUILDING

DORMITORY BUILDING
 OF THE
EASTERN ILL. STATE NORMAL SCHOOL
 AT CHARLESTON, ILLINOIS
 W. CARBY'S ZIMMERMAN
 STATE ARCHITECT
 CHICAGO

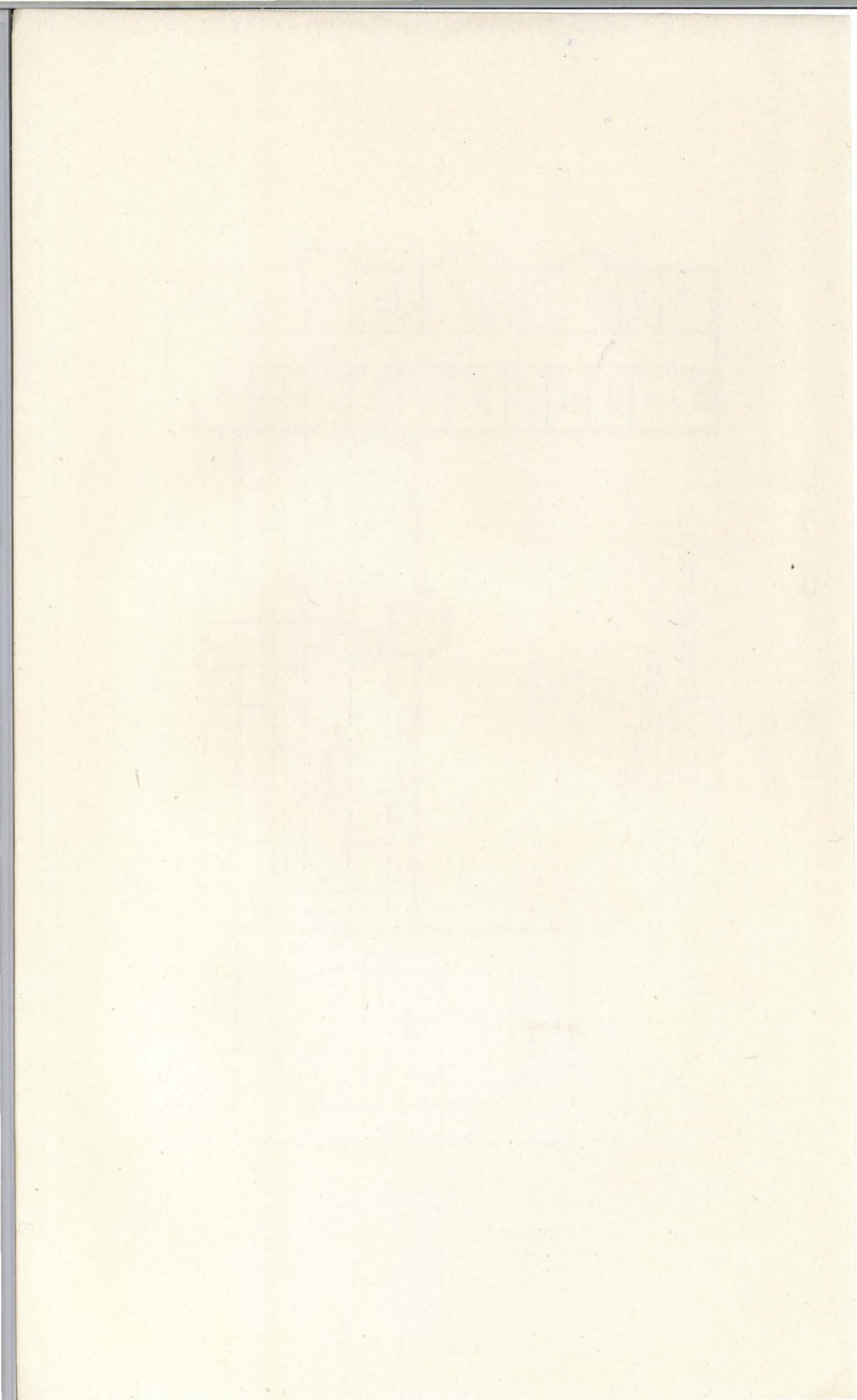


FIRST FLOOR PLAN

DORMITORY FOR THE BUILDING
EASTERN ILL. STATE NORMAL SCHOOL
 PITTSBURGH, ILLINOIS.
W. CARREYS ZIMMERMANN
 ARCHITECT
 CHICAGO.



SECOND FLOOR PLAN
 FROM P.L. 1000 ARCHITECT



**Eastern Illinois
State Normal School**

CHARLESTON

**A Catalogue for the Seventeenth Year with
Announcements for 1916-1917**

NORMAL SCHOOL BULLETIN, No.
52, published quarterly by the Eastern
Illinois State Normal School, Charles-
ton, Illinois.

Entered March 5th, 1902, as second-class
matter at the postoffice at Charleston, Illi-
nois.

Act of Congress, July 16th, 1894.

THE SCHOOL CALENDAR

1916-1917

FIRST TERM

NINETEEN WEEKS

<i>September 12, 1916, Tuesday</i>	<i>Registration</i>
8:00—12:00 A. M.	
1:30—5:00 P. M.	
<i>December 22, 12:10 Noon</i>	<i>Holiday Recess</i>
<i>January 2, 7:30 A. M.</i>	
<i>January 26, 1917, Friday</i> }	<i>First Term ends</i>
12:10 Noon }	

SECOND TERM

NINETEEN WEEKS

<i>January 30, 1917, Tuesday</i>	<i>Registration</i>
8:00—12:00 A. M.	
1:30—5:00 P. M.	
<i>March 30, 12:10 Noon</i> }	<i>Spring Recess</i>
<i>April 10, 7:30 A. M.</i> }	
<i>June 15, 1917, Friday</i>	<i>Second Term ends</i>

SUMMER TERM

1917

SIX WEEKS

<i>June 18, Monday</i>	<i>Registration</i>
8:00—12:00 A. M.	
1:30—5:00 P. M.	
<i>July 27, Friday, 12:10 Noon</i>	<i>Summer Term ends</i>

SPECIAL EXAMINATIONS

2:00 P. M.

September 14, 1916, Thursday
January 13, 1917, Saturday
February 1, 1917, Thursday
June 2, 1917, Saturday

THE BOARD OF TRUSTEES

J. M. Hicks, President.....	Newton
Charles C. Lee, Secretary.....	Charleston
Hon. Francis G. Blair, Superintendent of Public Instruction (trustee ex-officio).....	Springfield
R. W. Briscoe.....	Kansas
Ed E. Elstun.....	Greenup
Edward B. Rogers.....	Champaign
I. H. Johnston, Treasurer.....	Charleston

THE FACULTY

LIVINGSTON C. LORD, A. M., *Harvard University*;
LL. D., *University of Illinois*
PRESIDENT
Psychology and School Management

E. H. TAYLOR, A. M., Ph. D., *Harvard University*
Mathematics

FRIEDERICH KOCH
Music

ELLEN A. FORD, A. M., *Syracuse University*
Latin

THOMAS L. HANKINSON, B. S., *Michigan State Agricultural College*; *Cornell University*
Biological Sciences

ANNIE L. WELLER, B. S., *University of Chicago*
Geography

ALBERT B. CROWE, A. M., *Hanover College*
Physics and Chemistry

ISABEL McKINNEY, A. M., *Columbia University*
English

FLORENCE V. SKEFFINGTON, A. B., *University of Chicago*
English

S. E. THOMAS, A. M., *University of Iowa*
History

ANABEL JOHNSON, A. B., *Elmira College*; A. M.,
Columbia University
German

CHARLES P. LANTZ, B. S., *Gettysburg College*
Gymnastics and Mathematics

*OLIVE A. SMITH, A. B., *Wellesley College*; A. M.,
Columbia University
History

RAYMOND L. MODESITT, A. M., *Indiana University*
Mathematics

HOWARD DeF. WIDGER, A. B., *Yale University*
English

LOLA MORTON, B. S., *Teachers College, Columbia University*
Domestic Science

- LENA M. NILES, A. B., *Bates College*
Physical Education
- FISKE ALLEN, A. B., *Indiana University*; A. M.,
Columbia University
Supervisor of Elementary School
- MAUDE DOTT, Ph. B., *University of Chicago*
Drawing
- RUTH CARMAN, Ph. B., *University of Wisconsin*
German
- ADEN G. PIPPIT
Manual Training
- A. MARIE GEIGER, *Wisconsin State Normal School*; *Crane*
Normal Institute of Music
Music
- ARTHUR G. VESTAL, A. B., *University of Illinois*; A. M.,
University of Colorado; Ph. D., *University of Chicago*
Biological Sciences
- CARL COLVIN, B. S., *University of Illinois*
Agriculture
- LESTER MACLEAN WILSON, A. B., *Park College*; A. M.,
University of Chicago
Psychology
- BARBARA MURRAY HOWE, *Oxford University, England*
English and History
- MILDRED ELIZABETH KENNARD, A. B., *Boston Uni-*
versity
English and History
- CLIFFORD CHESLEY HUBBARD, A. B., *Brown Uni-*
versity
History
- META E. BENNETT, A. B., *Wellesley College*; *Emerson*
College
Reading
- ROSAMOND W. ESTABROOK, *Sargent School for Physical*
Education
Physical Education
- JAMES STORER, A. B., *Cornell University*; A. M., *Cornell*
University
Geography
- MABEL V. WILLIARD, Ph. B., *University of Chicago*
Mathematics

MARION GUEST, A. B., *The Western College; The Chicago School of Applied and Normal Art*

Drawing

ALICE VAN VALKENBURGH, A. B., *Wellesley College*

Mathematics

EDITH E. RAGAN

Critic Teacher in Grammar School

BERTHA M. NEWELL

Critic Teacher in Grammar School

GILBERTA COFFMAN

Critic Teacher in Grammar School

JESSIE LOUISE FORDE, A. B., *Kansas State Normal School; A. M., Columbia University*

Critic Teacher in Grammar School

MELLIE E. BISHOP, B. L., *Swarthmore College*

Critic Teacher in Primary School

FLORENCE E. GARDINER

Critic Teacher in Primary School

GRACE GEDDES

Critic Teacher in Primary School

ANNA H. MORSE

Critic Teacher in Primary School

OLIVE BUCKS, A. B., *University of Michigan*

History in the Grades

MARY J. BOOTH, A. B., *Beloit College; B. L. S., University of Illinois*

Librarian

OPHA B. PLETCHER, A. B., B. L. S., *University of Illinois*

Assistant Librarian

GRACE EWALT

Registrar

MARY E. HAWKINS

Head of Pemberton Hall

WALTER NEHRLING

Gardener

*Leave of absence September to June.

The names of teachers, with the exception of the critics, are printed in the order of their engagement.

ENEMIES OF GROWTH

There is much in our modern education which is uneducational because it makes growth difficult, if not impossible. Early specialization, with its attendant limited range both of information and of interest, is an enemy of growth. Turning from the distasteful before it is understood is an enemy of growth. Failure to see the relation of the subject of one's special interest to other subjects is an enemy of growth. The habit of cynical indifference toward men and things and of aloofness from them, sometimes supposed to be peculiarly academic, is an enemy of growth.

—*Nicholas Murray Butler in The Meaning of Education*

THE EASTERN ILLINOIS STATE NORMAL SCHOOL

THE PURPOSE AND PLAN OF THE SCHOOL

The function of the state in education extends of necessity to the training of teachers. A rational system of public education implies provision for securing efficiency in the teaching office. Public Normal Schools are the natural outgrowth of a policy of public education. The state is the only agency competent to meet the demands for qualified teachers imposed by its own attitude toward the instruction of its people. The object of a State Normal School is not to extend the earning power of one class of persons at the public charge. It is to give a culture and learning dedicated in a special way to the general welfare. It exists primarily not for the benefit of its students but for the benefit of the whole people. Such a conception is fundamental and determines questions of organization, courses of study, and methods of instruction in the State Normal Schools.

In early life the chief institutions in education are the home, the school, and the church. In the first years the home stands alone and its influence is in the main good. The church educates chiefly through the home and school. The school, however, is the teaching institution. Lord Avebury says: "There are three questions which in life we have over and over again to answer. Is it right or wrong? Is it true or false? Is it beautiful or ugly? Our education should help us to answer these questions."

If the school is especially concerned with one of these questions, it is with the second—"Is it true or false?" This involves the furnishing of the mind with knowledge and the exercising of the mind upon this knowledge in getting other knowledge or in reasoning. It is obvious that the process of teaching involves a child to be taught, a subject to be taught, and a teacher who teaches both the child and the subject. The statement sometimes made that it is a child who is taught and not the subject is absurd. No one is taught without being taught something. The mediator is the teacher and he knows something of a

child, something of knowledge in general, and something of the particular subject taught. Hence the theory of teaching rests upon logic and psychology.

HISTORICAL SKETCH

For the purpose of providing more adequate facilities for the training of teachers for the public schools of the state the legislature by an act approved, May 22, 1895, established the Eastern Illinois State Normal School. The five trustees provided for in the act, on September 7, 1895, selected a beautiful forty-acre tract of land three-quarters of a mile south of the public square of Charleston. The citizens of Charleston bought the land and presented it to the state. The grounds have a good elevation and are shaded by many fine old trees.

December 2, 1895, the contract was made for the erection of the building. The cornerstone was laid with impressive ceremonies on the afternoon of May 27, 1896. The building and grounds were dedicated August 29, 1899, and on September 12, 1899, the doors of the institution were opened to students.

During the first year, there were seventeen members of the faculty and two hundred forty students were enrolled. At the end of the first year, June, 1900, four students were granted the diploma of the school upon completion of the course of study. The school has grown steadily until there are now forty-six members of the faculty, and five hundred seventy-seven students are enrolled in the regular school year.

During the summer of 1901, a special term of six weeks was established for teachers. This term, beginning with an enrollment of one hundred seventy-two students, the first summer, has increased in popularity and usefulness until it has reached an enrollment of eight hundred eighty-five in 1915.

"In order to equalize the advantages of the State Normal Schools," encourage attendance and thereby increase their usefulness, the state legislature passed the Lindley Bill in 1905. This act provides that "there shall be awarded annually, to each school township or fractional township, a scholarship which shall entitle the holder thereof to gratuitous instruction in any State Normal School for a period of four years."

In 1907, the state legislature appropriated one hundred thousand dollars for a woman's building. This building was completed and occupied in January, 1909. It has proved to be a distinct addition to the cultural value of the school. In addition to providing a beautiful home for one hundred young women during their residence in Charleston, it has had a marked influence in establishing good standards of living, and has come to be the social center of school life.

As the school increased in numbers its facilities gradually became too restricted, and in 1911 the state legislature appropriated seventy-five thousand dollars for a training school building. The training school now enjoys all the advantages of a building designed and equipped for its special use, and the Normal School has opportunity for a more economical organization and an increase of its facilities.

The school has always stood for sound scholarship and has striven to inculcate in the minds of its students a sincere love for truth. One of the gratifying evidences that it is in a measure fulfilling its mission is the fact that so many of its students have gone on to higher institutions of learning the better to equip themselves for service.

RAILROAD FACILITIES

Charleston can be reached from any station in the district in six hours. From all stations along the Big Four or Clover Leaf it can be reached in two hours or less. Trains on the Illinois Central make close connection at Mattoon; trains from the southeast make close connection at Lerna; trains from the north and south make close connection at Paris. There are twenty passenger trains arriving daily in Charleston—ten on the Clover Leaf and ten on the Big Four. Students from Mattoon or Mattoon connections can, if they so desire, use the interurban electric line. Charleston is almost the exact center of a great network of roads, two north and two south roads crossing the district east of Charleston—one at Paris and one at Kansas; two crossing the district west of it—one at Mattoon and one at Windsor; one running close along the eastern border of the district; and one, the main line of the Illinois Central, running along the western border. An equal or greater number of roads cross the district

from east to west, some of them north, and some of them south of Charleston, several being trunk lines with numerous trains.

Pupils from Vermilion, Edgar, Clark, Crawford, and Lawrence counties, and the eastern part of Cumberland and Jasper, reach Charleston from the east, connecting with the Big Four, either at Paris or Kansas, or from the northeast over the Clover Leaf; those from Clay, Marion, Fayette, Effingham, Richland, and the western part of Cumberland and Jasper, and the southern part of Shelby, reach Charleston from the southwest over the Clover Leaf; those from Champaign, Moultrie, Macon, Christian, the northern half of Shelby, and the western half of Douglas, reach Charleston from the west over the Big Four.

EXPENSES

Tuition is free to those who are to teach in the public schools of Illinois. Others pay tuition at the rate of twenty-one dollars a year. An incidental fee of three dollars a term is required of all.

Text books are owned by the school and rented to students at a uniform price of one and a half dollars a term. Students wishing to own their books can buy them at the lowest wholesale prices.

Board and room can be obtained in private families for from three to four dollars a week. Students renting rooms and keeping house can materially reduce the above amounts. Room without board can be obtained for from one to one and a half dollars a week. In all cases the students will consult the president of the school.

ENTRANCE REQUIREMENTS

High school diplomas, teachers' certificates and township scholarships must be presented to the registrar. Undergraduates of high schools and graduates of high schools with three-year or two-year courses are required to bring a complete copy of their record, signed by the principal of the school. Attention is called to the fact that high school work repeated in the Normal School does not count toward credit for a diploma except for students in the five-year course.

PEMBERTON HALL

The legislature of 1907 appropriated one hundred thousand dollars for the woman's building and gymnasium—the first appropriation for such a purpose ever made in the State of Illinois. A fine stone structure was finished and occupied January 4, 1909. Nearly all the rooms in the building were taken from the first and the demand for rooms now exceeds its capacity. The building has met the fondest hopes of its most ardent advocates, and its value as a social center in the school and in setting good standards of living is already established.

Room, including heat and light, with table board and privileges of laundry, costs four and a half dollars a week. Students are not required to furnish anything.

THE ELEMENTARY SCHOOL

Classification and Admission

The Elementary School consists of eight grades, each grade being divided into two sections representing a half-year's advancement in the course of study. A pupil classified as 7B is doing the first half of the seventh year's work. A pupil classified as 7A is doing the second half of the seventh year's work. Since the total seating capacity of each room is forty pupils, and since transfers of pupils from one room to another are sometimes necessary, new pupils will not be admitted to any room whose enrollment is then thirty-seven.

New pupils are admitted in the order of their registration by grades. Applications for admission are listed in the order of their dates. If a pupil does not appear on the day on which he has asked to be admitted, his name is dropped from the list. In case there are vacancies pupils are admitted to all grades on the opening day of school in September, and on the opening day of the second term. All new pupils must present certificates of standing in the school from which they come.

Pupils once admitted to the school for the regular school year retain their places until completing their course unless they are unreasonably irregular in attendance or fail to appear on the opening day of each new term without previous notice to the supervisor of their

intention to appear later. Attendance during the summer term does not give any claim to a place during the regular school year.

A fee of one dollar each half year is charged to meet the cost of supplies and of most of the texts used throughout the grades.

Elementary School Schedule

The Elementary School calendar is practically identical with that of the other departments of the Normal School. Its daily schedule is as follows:

Pupils admitted to the grounds and building at	8:10 A. M.
Pupils of the upper four grades due in their seats at.....	8:25 A. M.
Pupils of the lower four grades due in their seats	8:55 A. M.
Chapel exercises with the Normal School	9:00 to 9:30 A. M.
Noon dismissal	12:00 M.
Admitted to the building afternoon session	1:15 P. M.
Due in their seats afternoon session...	1:30 P. M.
Afternoon dismissal	3:00 P. M.

Teachers of the Elementary School

The immediate direction of the work of each grade and the responsibility for its progress is with the critic-teacher of the grade. The critic-teachers, under the general direction of the supervisor, plan the work for their grades, discuss with the student-teachers their plans for teaching their particular subjects, do enough of the teaching to keep the progress of the pupils at least up to the standard of city schools of the same type, and teach special lessons for the observation of classes in methods of teaching special subjects in the Normal School proper. The character of the work of the critic-teacher determines almost entirely the success of the Elementary School in accomplishing its purpose.

At present the school has nine critic-teachers; one for each of the eight grades, and a special teacher for the work in history.

The teachers in other departments of the Normal School have in all cases an advisory relation to the Elementary School and in several cases a supervisory relation. In a few cases they assist in the teaching of their subjects in the Elementary School. This is true in the departments of music, drawing, industrial arts, domestic science, and physical training.

Aim of the Elementary School

The aim of the Normal School in maintaining an Elementary School is two-fold. It needs a pedagogical laboratory in which students and members of the faculty may test the methods of instruction and the pedagogical theories taught in the Normal School. And to develop in the students craftsmanship in teaching they must have opportunity to observe expert work and to develop skill by actual experience in teaching.

But these results cannot be secured unless the Elementary School itself is aiming at the best possible education for the boys and girls who are pupils in the school. If the elementary school is not securing for its pupils results up to the standard of good schools of the usual type it is not best adapted to its purpose as an experimental school, and if it is not better than other elementary schools it is certainly not adapted to secure the best results as a school of observation and practice. The school seeks first, then, to offer the best in curriculum and training of which it is capable, and at the same time to give the student-teacher the experience in teaching necessary to develop some skill. The critic-teachers do the greater part of the teaching, then, because it is believed that experience in teaching is valuable only when based on sound educational principles which are illustrated by a teacher of marked ability directing a well-trained class. Observation of the expert, followed by practice, and this again by observation should be the rule.

The school seeks also entire unity between the theories and methods of instruction taught in the other departments, and the practices of the Elementary School. To this end members of the Normal School faculty are advisers to critic-teachers and to student-teachers of the work of their departments in the Elementary School. The critic-teachers give lessons for observation by the

Normal School classes in methods in special subjects, and conduct experiments in which the special department is interested.

SATURDAY SESSION

The school holds regular sessions on Saturday, taking Monday as the weekly holiday. This plan gives teachers, who have no school on Saturday, opportunity of pursuing some regular work in the Normal School; and consequently promotes closer relations between the school and the teachers of the district.

SUMMER SESSION

The demand on the part of teachers and students for an opportunity to study during a part of the summer vacation justifies the State Normal Schools in offering a short term's work during this time.

The subjects offered are designed to meet the wants of :

1. Inexperienced teachers and students of Normal Schools who wish to do work that will receive credit in the Normal Schools of Illinois in courses leading to a diploma. The programme is so arranged that the students may recite twice each day in many subjects, thus completing the work of a term of twelve weeks in six weeks.

2. Experienced teachers who are employed during the school year. Review courses, courses in general method and lectures, together with observation of work in the model school are offered.

The summer session for 1917 will begin on Monday, June 18, and close on Friday, July 27.

THE STUDENTS' LOAN FUND

The Students' Loan Fund of the Eastern Illinois State Normal School makes it possible for a deserving student in the second half of the course to borrow, at a low rate of interest on a personal note, a sum of money that will help him to remain in school and complete the course. This plan has been tried and students have found such temporary assistance of great advantage. The foundation of this fund was secured from admission fees to the senior class play and to the model school entertainment,

given during commencement week. At the end of each school year a play is presented with the accessories of appropriate costume and scenery. Sheridan's "The Rivals" and "The School for Scandal," Goldsmith's "She Stoops to Conquer," Shakespeare's "A Mid-Summer Night's Dream," "As You Like It," "Twelfth Night," and "The Tempest," Tennyson's "The Princess," "The Lady Sheriff," Clyde Fitch's "The Climbers," and Josephine Preston Peabody's "The Piper" have been given.

THE ADELIA CAROTHERS FUND

A fund known as "The Adelia Carothers Fund" has been established by Mrs. Ida Carothers Merriam and Mr. Charles G. Carothers in memory of their mother. This fund is to be loaned to young women students of high character and scholarship during the last half of their course. The student to whom this loan is made is distinctly honored.

ATTENDANCE AT CHURCH

Each student is expected to attend regularly the church of his choice, or that which meets the approval of his parents. The pastors and members of the different churches have made the students of the school at home in the churches and Sunday schools. The teachers of the Normal School encourage the pupils to form and sustain intimate relations with the churches.

THE NORMAL SCHOOL BULLETIN

The Normal School Bulletin, a sixteen-page monograph, devoted to educational topics, is issued quarterly and distributed in the immediate territory of the school, free of charge. The numbers issued are:

1. A Suggestion for Teaching Shakespeare's Dramas, by *Thomas H. Briggs, Jr., A. B.*
2. Method of Teaching, by *Francis G. Blair, B. S.*
3. The Causal Idea of History, by *Roswell C. McCrea, Ph. D.*
4. Some of the Objects of Studying English Grammar, by *W. M. Evans, Litt. D.*
5. The School Garden, by *Otis W. Caldwell, Ph. D.*

6. Manual Training, by *Caroline A. Forbes.*
7. The School Library, by *Florence M. Beck, B. L. S.*
8. Graphic Arithmetic, by *E. H. Taylor, B. S.*
9. Reading in the Grades, by *Katharine Gill.*
10. The Relation of the Home and School, by *Charlotte May Slocum.*
11. Bird Study in the Rural School, by *Thomas L. Hankinson, B. S.*
12. Bird Study in the Rural School, (Second edition), by *Thomas L. Hankinson, B. S.*
13. Physics in the High School, by *Albert B. Crowe, A. M.*
14. Some Suggestions for the Teaching of Geography in the Grades, by *Annie L. Weller, B. S.*
15. Fourth Year Geography in the Illinois Course of Study—Topic: The Work of Water, by *Clara M. Snell.*
16. English Composition in Secondary Schools—Topic: Correct English, by *Florence V. Skeffington, A. B.*
17. The Study of Literature in the Upper Grades, by *Isabel McKinney, A. M.*
18. Announcement of the Summer Session of 1907.
19. Annual Catalogue Number, 1906-1907.
20. The School Garden II, by *Otis W. Caldwell, Ph.D.*
21. Announcement of the Summer Session of 1908.
22. Annual Catalogue Number, 1907-1908.
23. Some Problems in Education, by *John M. Coulter, Ph. D.*
24. Announcement of the Summer Session of 1909.
25. Annual Catalogue Number, 1908-1909.
26. Education and Utility, by *W. C. Bagley, Ph. D.*
27. Announcement of the Summer Session of 1910.
28. Annual Catalogue Number, 1909-1910.
29. Eastern Illinois Teachers' Association—Thirteenth Annual Meeting.
30. Reading in the Grades (Second Edition), by *Katharine Gill.*
31. Announcement of the Summer Session of 1911.
32. The Annual Invitation Athletic and Oratorical Meet, held at the Eastern Illinois State Normal School.
33. Annual Catalogue Number, 1910-1911.
34. Schoolroom Gymnastics and Graded Games, by *Alice M. Christiansen.*
35. Announcement of the Summer Session of 1912.
36. Annual Catalogue Number, 1911-1912.

37. Views of the Buildings and Grounds.
38. Arguments for Vocational Guidance, *by E. E. Lewis, A. M.*
39. Announcement of the Summer Session of 1913.
40. Annual Catalogue Number, 1912-1913.
41. English Literature in Secondary Schools: The Rise of the Drama in England; Outlines for the Study of Literature, *by DeWitt C. Sprague, Ph. B.*
42. Preliminary Announcement of the Summer Session of 1914.
43. Announcement of the Summer Session of 1914.
44. Alumni Register, 1900-1913.
45. Annual Catalogue Number, 1913-1914.
46. Material on Geography (which may be obtained free or at small cost), *by Mary Josephine Booth, A. B., B. L. S.*
47. Preliminary Announcement of the Summer Session of 1915.
48. Announcement of the Summer Session of 1915.
49. Annual Catalogue Number, 1914-1915.
50. Lists of Material (which may be obtained free or at small cost), *by Mary Josephine Booth, A. B., B. L. S.*
51. Announcement of the Summer Session of 1916.

THE SCHOOL GARDEN AND GREENHOUSE

An opportunity is given for seeing the work done by pupils of the model school in elementary agriculture. Small plots of grounds are planted and cared for by the pupils under the direction of the gardener and the teachers. Connected with the students' garden is a model vegetable garden, a rose garden, and a garden for experimentation and exhibition purposes. All of these divisions are used for demonstrating the proper care of plants, the method of propagation, crop rotation, and some of the principles of plant breeding.

An excellent four-room greenhouse contains many plants of unusual interest and serves, moreover, as an important adjunct to the botanical laboratories.

Additional facilities for field observations and for obtaining laboratory materials are offered by a small lake, a lily pond, and a forestry of six thousand trees, all of which are within five minutes' walk of the biological laboratories.

All seventh and eighth grade pupils are required to do garden work. Where possible the home garden is used. If there is no garden at the home, space in the school garden is given to the pupils for use during the summer.

The home garden work is carefully supervised. The pupil studies the principles of gardening in the classroom, and does the work in the garden under supervision of the teacher.

This work is designed to stimulate a keener interest in the garden as an economic factor in the home life; to give to the pupil a better knowledge of the principles underlying the care of plants, and to teach methods of culture of special garden plants. The pupil is required to keep a record of the garden and to report each week to the teacher.

THE CHRISTIAN ASSOCIATIONS

Both the Young Men's and Young Women's Christian Associations have organizations in the school and are in a flourishing condition. Committees from these associations meet new students at trains and assist them in finding boarding places. Social gatherings under the auspices of the associations are held during the year.

SPECIAL EXAMINATIONS

Special examinations are given only on the following dates: at 2 o'clock in the afternoon on the first Thursday of each half year; and at the same hour on the next to the last Saturday in each half year. A fee will be charged for special examinations given at other times.

September 14, 1916, Thursday.

January 13, 1917, Saturday.

February 1, 1917, Thursday.

June 2, 1917, Saturday.

ATHLETICS

All athletics of the school are conducted by the Athletic Association, of which nearly all the students and teachers are members. A membership fee of three dollars a year is charged. This fee entitles the member to a vote in meetings and to free admission to all athletic contests in which the Normal School takes part.

Students to be eligible to take part in athletic contests with other schools must carry at least twelve periods of work each week and make an average grade of not less than seventy per cent.

THE ATHLETIC AND ORATORICAL MEET

The Eighth Annual Athletic and Oratorical Meet under the auspices of the Eastern Illinois State Normal School Athletic Association was held at Charleston, May 6, 1916. There were two hundred fourteen contestants, representing thirty-one high schools, entered in the field meet. Seventeen boys and eighteen girls were entered in the oratorical contest.

The field meet was won by Urbana. The relay race was won by Champaign in three minutes, forty-two and four-fifths seconds, lowering the track record ten seconds. Mr. Allman of Urbana again scored the greatest number of points, scoring eighteen; and Mr. Powers of Decatur was second, scoring sixteen. Mr. Allman received the cup, presented by Mr. J. A. Parker of Charleston, for scoring the greatest number of points.

In the girls' division of the oratorical contest, Miss Maurice Parker, of Effingham, won first place; Miss Virginia Martin, of Mattoon, second place; and Miss Ruth Hoyland, of Decatur, third place.

In the boys' division, Mr. Freeman Hammond, of Mattoon, won first place; Mr. Albert Herrin, of Decatur, second place; and Mr. Charles Freeman, of Charleston, third place.

THE ALUMNI ASSOCIATION

Wednesday of commencement week is Alumni Day. Returning graduates attend morning exercises at nine o'clock and the Alumni reception at eight o'clock in the evening. It is customary to have in the afternoon a ball game between members of the regular team and players on former teams. A large number of alumni attended the fifteenth anniversary celebration last year.

The officers of the association are:

Mr. George B. Rankin, '13, President.

Mr. Maurice Hampton, '15, Vice-President.

Miss Cora A. Parkison, '11, Secretary and Treasurer.

Executive Committee

Miss Ruth Linder, '15, Chairman.
 Miss Anna M. Timm, '16.
 Mr. Bruce Rardin, '10.
 Mr. Stanley M. Crowe, '16.
 Miss Eda M. May, '15.

*Standing Committee for Advancing the Interests of
the School*

Mr. Warren L. Hagan, '07.
 Miss Runie T. Robinson, '12.
 Mr. Leonard E. Davis, '08.

ASSOCIATIONS OF FORMER STUDENTS

The Charleston Club of Chicago and the Charleston Club of the University of Illinois are organizations of former students of this school. These clubs meet occasionally in a very pleasant way and all former students or teachers, living in or near these centers, will be notified of these meetings if they will send their names to the secretary. Mail addressed in care of The University of Chicago and The University of Illinois will reach these officers.

The officers of the Charleston Club of Chicago are:
 Ciney Rich, President.
 Ezra O. Bottenfield, Vice-President.
 Anna R. Lahey, Secretary and Treasurer.

The officers of the Charleston Club of The University of Illinois are:
 William C. Troutman, President.
 Georgia Helen McDonald, Vice-President.
 Oren L. Whalin, Secretary and Treasurer.

THE CERTIFICATING LAW

On July 1, 1914, the new law relating to the granting of teachers' certificates went into effect. By the provisions of this law, a third grade elementary school certificate, valid for one year in the first eight grades of the common schools of the county in which it is issued and in no other county, *may, at the option of the county superintendent*, be issued without examination to persons who have successfully completed two years of work in a recognized Normal School, or one year of such work if the applicant is a graduate of the tenth grade. This certificate is renewable once only and on evidence satisfactory to the county superintendent of three months' successful teaching or six weeks' professional training. This certificate is not issued the second time to the same person.

A second grade elementary school certificate, valid for two years in the first eight grades of the common schools of the county and in the ninth and tenth grades, when endorsed for the same by the county superintendent *may, at the option of the county superintendent*, be issued without examination to persons who have completed the junior year's work in a recognized Normal School or its equivalent. This certificate is renewable on evidence satisfactory to the county superintendent of six months' successful teaching or twelve weeks' professional training, and a second time if in the period following the date of issue the holder shall have acquired eighteen weeks' professional training in any recognized school provided for such training.

A first grade elementary school certificate, valid for three years in the first ten grades of the common schools of the county, and in the high school when endorsed for the same by the county superintendent *shall be issued* to graduates of a recognized Normal School, or from an institution offering an equivalent preparation, provided the applicant has had one year of successful practice teaching, and applies for the certificate within three years after graduation.

Third grade and second grade certificates are valid for teaching only. A first grade certificate is valid for super-

vision in all positions where the principal or superintendent teaches one half or more of the time.

A high school certificate, valid for three years in the high schools of the county, and renewable indefinitely for periods of three years on evidence satisfactory to the county superintendent of successful teaching or supervision and professional growth has the following requirements: (1) graduation from a recognized high school, or an equivalent preparation; (2) a certificate showing the completion of at least two years' successful work in any recognized higher institution of learning, and (3) an examination in English, pedagogy, and six high school subjects, three majors and three minors, chosen from a list prescribed by the examining board: *Provided, however*, that graduates of a recognized Normal School, College or University may offer within three years after graduation, certified credits in lieu of examination in the above subjects accompanied by faculty recommendations of ability to teach in the high school.

The law contains also provision for supervisory, kindergarten-primary, and special certificates issued by a county superintendent. The Superintendent of Public Instruction is empowered to grant four-year elementary school, high school, and supervisory certificates which shall at the time of their expiration become valid and be endorsed for life upon evidence of successful teaching or supervision satisfactory to the Superintendent of Public Instruction.

A first and second grade elementary school certificate, a high school certificate, a supervisory certificate, a kindergarten-primary certificate, or a special certificate is valid in the county of issue, and in any county of the state when endorsed by the county superintendent of such county, upon evidence of successful teaching, certified by the county superintendent in whose county the teaching has been done.

All certificates, whether state or county, must be annually registered and endorsed, and a fee of one dollar must be paid.

COURSES OF STUDY

A revision of the courses of study went into effect, September, 1913. An adjustment course is offered for those who have completed two years or more of the four-year course.

The school year consists of two terms of nineteen weeks each. A summer session of six weeks is held immediately after the close of the regular school year.

A unit means a year's work in a subject reciting not less than four times a week. Below the junior year, subjects require five periods a week; in the junior and senior years, four periods a week. All laboratory sciences require six periods a week.

The elementary school offers eight years of work and the Normal School is open to all graduates of the eighth grade. The act of the state legislature, known as the Lindley Bill, creates township scholarships in the Normal Schools of the state and requires them to admit graduates of the eighth grade who possess the highest qualifications in their respective townships. To provide work suitable to these and other graduates of the eighth grade the work of the ninth year is offered.

OUTLINE OF COURSES

I. A one-year course for college graduates. Five units, taken from the work offered for juniors and seniors, are required for graduation.

II. A two-year course for graduates of accredited four-year high schools. Ten units are required for graduation.

III. A three-year course for graduates of three-year high schools or holders of first grade certificates. Fourteen units are required for graduation. The first four units are taken from work offered for the first three years of the five-year course. The remaining ten units are the same as for the two-year course. High school work, or work covered by the first grade certificate, must not be duplicated in any of these fourteen units.

IV. A four-year course for those who have completed two years of high school work or who hold a second grade certificate. Eighteen units are required for graduation. The first eight units are taken from the work offered for the first three years of the four-year course, the remaining ten units are almost the same as for the two-year course. High school work must not be duplicated.

V. A five-year course for those who have completed the eighth year of common school work. Students who have completed one year of high school work are admitted to the first year of the five-year course, credit being given only by examination or by proved ability. Twenty-two units are required for graduation, the last ten being almost the same as those offered in the two-year course.

V. c. A two-year course for those who wish to prepare in as short a time as possible to teach a country school. Eight units are required. Graduates of the eighth year may take either this course or the regular five-year course. Upon the completion of this two-year course the school gives the student a statement that he has completed in this school two years of work in preparation for teaching in a common school. The holder of this certificate may receive the diploma of the five-year course upon completing fourteen more units, as indicated under the heading V. c. in the condensed outline of courses.

Undergraduates of high schools should bring a complete record of their high school work.

Electives

There are two groups of electives: group I. is open to students below the junior year; group II. is open to juniors and seniors. The numerals indicate the number of units or years of work offered in each subject. Students are urged to plan their electives with reference to the possibilities for the whole course rather than by years. For example, to a student in the five-year course, wishing to elect science, the school offers one year of required botany and two years of advanced elective work in the same subject; two years of zoology, one of physics, one of chemistry, one of required geography, and two years of advanced elective work in the same subject, two years of elective agriculture, and one-half year of required

physiology. To a student in the five-year course wishing to take work in literature and arts, the school offers three years of required English and two years of advanced elective work; four years of high school Latin and one year of advanced work, three years of German, one year of required history, two years of elementary elective history, and two years of advanced elective work; two years of advanced work in mathematics.

Two years' work in domestic science, two in domestic art, two in agriculture, and two in manual training are elective in all courses.

Students are advised to consult the head of the department in which they wish to elect the greater part of the work.

Electives

Group I., open to students in the IX., X. and XI. years.

<i>Latin</i> 3 (units)	<i>Mathematics</i> 1, XI.
<i>German</i> 3	<i>Domestic Science</i> 1, XI.
<i>History</i> 2, X., XI.	<i>Manual Training</i> 2
<i>General Science</i> 1	<i>Agriculture</i> 2, X., XI.
<i>Science</i> 3	<i>School Hygiene</i> ½, XI.
<i>Physics</i> 1, XI.	<i>Physical Education</i> (3rd year) ½, XI.
<i>Zoology</i> 1, XI.	
<i>Botany</i> 1, XI.	

Group II., open to students in the junior or B year, and the senior or A year.

<i>Latin</i> 2	<i>Drawing</i> 1
<i>German</i> 2	<i>Domestic Science</i> 2
<i>History</i> 2	<i>Domestic Art</i> 2
<i>English Literature</i> 2	<i>Manual Training</i> 2
<i>Mathematics</i> 2	<i>Agriculture</i> 2
<i>Economics</i> 1	<i>Practice Teaching</i> 1
<i>Science</i>	<i>The Teaching of</i>
<i>Physics</i> 1	<i>English</i> ½
<i>Zoology</i> 2	<i>Arithmetic</i> ½
<i>Botany</i> 2	<i>Geography</i> ½
<i>Chemistry</i> 1	<i>History</i> ½
<i>Geography</i> 1½	<i>Physical Education</i> ½
<i>Geology</i> ½	(Third year)
<i>Reading</i> 1	<i>School Hygiene</i> ½

The number of elective units required in each course is as follows:

Three in the two-year course,

Five in the three-year course,

Six in the four-year course,

Eight in the five-year course,

Six and one-half in the five-year course for country school teachers.

The Adjustment Course

Students who have completed the first two years of the former four-year course will continue their work as follows, substituting an elective unit if they have already had physiology and manual training:

B	A
5 units	5 units
<i>Psychology 1, 2</i>	<i>Education 1, 2</i>
<i>History 7; Special</i>	<i>Teaching 1, 2</i>
<i>Method 1*</i>	<i>Physiology</i>
<i>Physics 1, 2 or Elective</i>	<i>Manual Training 7, (3)</i>
<i>Elective</i>	<i>Elective</i>
<i>Elective</i>	<i>Elective</i>

*Or Elective $\frac{1}{2}$ unit.

One-Year Course for College Graduates

This course is offered to all graduates of reputable colleges, who, having mastered more or less thoroughly the subject-matter of their chosen work, desire a deeper insight into its educational bearings. The course is planned also to give an opportunity for a more intensive study of those subjects that the candidate is preparing to teach.

The work is as follows:

General psychology

The development of the child

The psychological foundations of educational method

Theory of school management

American history

Economics

Physiography

Commercial geography

Work in the training department

Subjects elected from other courses

DESCRIPTIVE OUTLINE OF COURSES

PSYCHOLOGY

1, 2. The first aim in psychology is to see that the student possesses a body of properly classified psychological knowledge, and to give him a proper method of acquiring such knowledge. His attention is directed to the working of his own mind in such a manner as to make introspection fairly accurate. He is also directed to study the process of mental action in others as manifested in conduct. The student is introduced to the works of trained observers of the human mind that he may see through their eyes and thus correct his own somewhat crude observations.

Finally, a careful application of the principles discovered and acquired is made to the problem of teaching. It is impressed upon the student that a scientific statement of a psychological principle is a much easier thing than its ready application to the learning mind.

PRACTICE TEACHING

1, 2. All students graduating from the Normal School are required in their senior year to take throughout the year a course in practice teaching. For this purpose the school year is divided into four quarters. Each quarter the list of student-teachers is divided into as many groups as there are critic-teachers and one group is assigned to each critic for the quarter. By the critic-teacher the student is assigned to teach a particular subject in her grade. Each quarter the student is assigned to a different grade, usually two grades in advance of his previous assignment, and to a different subject, until the fourth quarter when the student's preference for grade and subject is considered.

In the beginning of the first quarter, the student makes plans for teaching the lessons in his assigned subject after discussing the subject-matter with the critic-teacher, but for about two weeks the teaching is done by the critic-teacher, the student observing. Gradually the teaching

is turned over to the student, the critic-teacher observing, and discussing the lessons and lesson plans before and after the student teaches the lesson. Each critic-teacher holds one general meeting each week with her group of students, besides special conferences with individuals. She also does as much of the teaching throughout the quarter as seems to her necessary to keep the class up to standard and to furnish the student opportunity to observe expert teaching.

OBSERVATION

General Observation A. In connection with their work in teaching all seniors are required to take a course in general observation. The class meets one period a week throughout the year for the discussion of the work of the Elementary School which they have been directed to observe. This course in observation is directed at first along the line of school management but soon emphasis is placed upon the recitation and they observe typical lessons taught by the critic-teachers.

Observation 1, 2. A course in rural school management and methods is required of all students in the second year of the two-year course to prepare for teaching in rural schools. A large part of the course consists in observation of the work of the training school, both the regular work of the school and special lessons given to illustrate certain points in pedagogy.

The course will include discussions of :

- I. Physical conditions of the rural school.
 - a. The schoolroom—lighting, heating and ventilation, seating arrangement, cleanliness, decoration.
 - b. The playground and its use.
- II. The rural school curriculum.
 - a. The Illinois course of study.
 - b. Methods in the special subjects—talks given by the critic-teachers of the training school illustrated by lessons with their pupils, observed by the students.
 - c. The use of local material in the various subjects.

- III. Making a daily, weekly, and yearly programme under the varying conditions that arise in different rural schools.
- IV. Rural school routine and problems of discipline.
 - a. Some attention to Illinois school law.

EDUCATION

1, 2. A year of work in education is required of seniors in all courses. Education 1, 2 consists of work in the history of education and considers the development of the institutions, principles and practices of elementary education in modern times. School management is also studied. Both courses are offered in both terms, so that a student who is irregular can get both in the same term.

SPECIAL METHODS

1, 2. Special methods 4 B is required in the five-year course for country school teachers. It consists of six courses of six weeks each, *grammar, arithmetic, and reading* being given in one term and *history, geography, and nature study* in the other term. High school graduates who are irregular and need six weeks' work in any of these subjects in order to complete required work in the two-year course may take such a part of this course as they may need.

Each of the courses that make up the year of work in special method is outlined under the subject to which it belongs. *Omitted 1916-1917.*

ENGLISH

1, 2. *Elements of English.* This is a course in the elements of composition with grammar review. It includes instruction in the use of the library and the required reading of several good books. The course emphasizes practical composition, letter-writing, oral and written recitations in other subjects, and the qualities of all good speech.

3, 4. *Rhetoric.* This course in English composition is more advanced than 1 and 2. While the emphasis is still placed on the qualities of effective expression, the principal forms of prose discourse furnish the basis for class

work. Much attention is given oral composition, which usually precedes written work. Incidentally the course furnishes an introduction to the study of literature since the English classics used in class are selected with that end in view.

5, 6. *English Literature from Shakespeare to Scott.* Although in this course the student will be expected to get a fair idea of the history of this period of literature, the class work will be devoted mainly to the literature itself. In making the necessary selections for study, the instructor will be guided by the capacity of the class and the usual demands of an introductory course in literature.

7, 8. *Nineteenth Century Prose, English and American.* This course introduces the student to some of the best modern essayists, novelists and dramatists. The aim is primarily to arouse his interest in these forms of literature, and secondarily to furnish him with standards of judgment. Elective A and B.

9, 10. *Nineteenth Century Poetry, English and American.* This course attempts to cultivate some appreciation of poetry, its qualities and forms, and some insight into the development of English poetry. The class will study in some detail English and American poetry of the nineteenth century. Except by special arrangement, Course 9 is a prerequisite for Course 10. Elective A and B.

11. *English in the Grammar Grades.* The course gives a review of the fundamental facts of grammar, emphasizing the application of grammar to composition; and makes some study of the composition work in these grades. Either this course or Course 12 may be taken for required 2 B English or for elective A. B.

12. *English in the Primary and Intermediate Grades.* This course is an introduction to the field of children's literature, giving some attention to story-telling and dramatization. It also makes some study of language work in these grades. Either this course or Course 11 may be taken for required 2 B English or for elective A. B.

13. *Grammar Methods.* This is a short course in the methods of teaching grammar. It includes study and criticism of definitions, comparison of various modes of analysis, and the preparation of lesson plans. Required of B students in the course for country school teachers. Six weeks.

READING

Reading 1, 2. This course is designed to give the student a definite knowledge of the physics and physiology of sound, as it relates to the principles governing the use of the voice; a knowledge of the physiology of the vocal instrument, detailed information about the articulation of the elements of the language, and its enunciation, in order that he may not only clear up his own articulation and enunciation, but that he may be acquainted with methods of teaching correct habits, and of overcoming such defects as he may find among his pupils. A knowledge of the principles of good reading is taught from the standpoint that expression obeys the common laws of growth.

Reading 3, 4. This course deals with oral interpretation, the students being expected both to improve their own reading, and to establish by daily practice in class comment, standards which enable him to criticise intelligently. During the second half-year a play or a long poem is read, the aim being to render adequate expression of the author's thought. Some attention is given to the principles of public-speaking, but the emphasis is here laid on the student's own improvement, rather than on methods of teaching.

Reading 5, 6. Elective courses in public speaking are open to those who have completed one of the regular courses in reading. The purpose of the course is to give training and practice in speaking in public in a clear, direct, earnest, natural manner, known as conversational. In accomplishing this, these elements are considered: breathing, voice, pronunciation, articulation and enunciation, bearing and gesture. The student has practice in speaking before the class, followed by definite criticism by the teacher. The students begin with selections from speeches, of simple, unimpassioned character and proceed to selections which possess more feeling. When sufficient progress is made the students are expected to write three- or five-minute speeches on subjects easily within their knowledge and to deliver these first from memory, then from an outline but with speech not committed to memory, and finally with nothing but a careful thought preparation of the subject.

The work of the first term includes the delivery of declamations with considerable attention to the development of the breathing, voice, pronunciation, articulation and enunciation, gesture and bearing. It is prerequisite to the work of the second term which gives attention to the preparation and delivery of speeches written by the students. *Omitted 1916-1917.*

HISTORY

For Students in the Ninth, Tenth, and Eleventh Years

1. *The History of Greece to the Roman Conquest.* Required in the first term of the ninth year.

2. *The History of Rome and of Mediaeval Europe to 814 A. D.* Required in the second term of the ninth year.

3. *The History of England to 1603.* First term.

4. *The History of England from 1603 to the Present.* Second term.

5. *American History and Government to 1829.* First term.

6. *American History and Government from 1829 to the Present.* Second term. Courses 5 and 6 are required in the second year of the course for those preparing to teach in the country schools. They are open to all other students in the tenth and eleventh years.

8. *Civil Government.* Tenth and eleventh years, second term.

For Juniors and Seniors

7. One half year of history is required in the junior year. Students will take any one of the four following courses: 9, 10, 11, or 12.

9. *The History of Western Europe, from the Fourth Century to 1715.* First term.

10. *The History of Western Europe, from 1715 to the Present.* Second term.

11. *The History of the United States, from 1750 to 1829.* First term.

12. *The History of the United States, from 1829 to 1879.* Second term.

The instruction in history aims to lay the foundation for a serious study of the subject. This implies (1) habits of accuracy in dealing with historical facts; (2) ac-

quaintance with representative historical literature; (3) some familiarity with the method and spirit of historical research; (4) some insight into the nature of historical truth. Entertainment, ideals of life and conduct, inspiration, are to be sought but not too exclusively. An attempt is made to develop a conception of history from the works of modern historians, and to show the relation of such a conception to history in the curriculum of the common school. This does not mean that purely educational considerations are to be ignored, or that the teacher's point of view is to be lost. But it is believed that materials for school history can be selected with due regard to a conviction that history has rights as well as pedagogy.

Current methods of teaching history in the grades and up through the secondary school are studied and illustrated, together with the special literature on the subject. A critical examination of historical textbooks is attempted and the characteristics of a good text noted. The various special aids and appliances useful to historical workers are exhibited.

17. *The Teaching of History.* A course for those who are preparing to teach history in the elementary or secondary school. *Omitted 1916-1917.*

ECONOMICS

For Juniors and Seniors

1. *The Economic History of the United States.* The natural resources, their extent, geographical distribution and relation to industrial life; the development of agriculture, industry, commerce, and transportation; the changes in methods of production and distribution and their relation to present economic problems. First term.

2. *The Principles of Economics.* Second term.

LATIN

Latin is elective throughout all courses. First year Latin may be taken in the ninth, tenth or eleventh year; Cæsar, in the tenth or in the eleventh year; Cicero and Virgil, in the eleventh and junior years; Latin 9, 10, 11, 12, in the junior and senior years.

1, 2. *First Year Latin.* A careful study of inflection, syntax, and translation.

3, 4. *Second Year Latin*. Four books of Cæsar with selections from the other books. Latin grammar and composition. Roman Antiquities.

5, 6. *Third Year Latin*. Six orations of Cicero with selections from his letters. Latin grammar and composition. The Latin element in English, figures of speech, the reckoning of time, the memorizing of selected passages, sight translation.

7, 8. *Fourth Year Latin*. Six books of Virgil's Aeneid, Greek and Roman mythology, poetical construction, figures, prosody, Virgil's debt to Homer, the memorizing of selected lines and passages, sight translation. Courses 5 and 6 alternate with courses 7 and 8. Virgil is offered in 1916-1917.

9. *Livy, Books I. and XXI*. First term.

10. *Horace, Odes*. Second term.

11. *Cicero, De Senectute and De Amicitia*. First term.

12. *Horace, Satires and Epistles*. Second term.

Courses 9 and 10 alternate with Courses 11 and 12, but will not be offered this year. Four years of Latin are prerequisite to Courses 9, 10, 11, 12.

GERMAN

German is elective throughout all courses. By electing it in the IX., X., or XI. year, one will be able to have three years of German before completing the five, four, or three-year course. The aim is to give the pupil such knowledge of the principles of German grammar and such practice in reading and translating as will enable him to understand and enjoy the masterpieces of German literature.

Effort will also be made to have him understand and use the spoken language.

1, 2. *First Year German*. The work of this year includes drill in the pronunciation of German sounds, a study of the grammar, with written and oral exercises, and the reading of easy stories. Bagster-Collins' First Book in German and Im Vaterland are the basis for the work in this year.

3, 4. *Second Year German*. In the second year the work in grammar is continued and the class reads Im Vaterland, Höher als die Kirche, Immensee, GERMELSHAUSEN, and other stories of the same rank.

Free reproduction of the material read and memorizing of German poems are required, and practice in sight reading is also given.

5, 6. *Third Year German.* The work of this year includes practice in composition and the reading and study of masterpieces as Wilhelm Tell, Maria Stuart, Minna von Barnhelm, etc. The study of each drama includes a study of the author, the structure and composition of the drama, and its place in German literature.

MATHEMATICS

Arithmetic 1. The work of this course includes notation, numeration, the fundamental operations with integers and with common and decimal fractions, factors and multiples, the English and metric systems of measure, involution and evolution, and methods of teaching these topics. Required IX. c.

Arithmetic 2. The principal topics are ratio and proportion and their application to simple problems of geometry, mensuration, simple geometric constructions, percentage and its applications, literal arithmetic, and methods of teaching these topics. Required IX. c. Courses 1 and 2 include methods in arithmetic.

Arithmetic 3. The subject-matter of this course is essentially that of Arithmetic 1 and 2, but the work is more advanced and assumes a knowledge of elementary algebra and geometry. Required in the B year of all students who have not had Arithmetic 1 and 2.

Arithmetic 4, Methods. An effort is made to have the students become familiar with the best literature of the subject and with recent tendencies in the teaching of mathematics, and to have them discover the rational basis for the organization of a course of study for arithmetic in the grades. Six weeks. Required in the B year of the country school teachers' course. Omitted 1916-1917.

Arithmetic 5, Methods. This course is a continuation of Arithmetic 3. It is a preparatory course for those who wish to fit themselves especially for the teaching of arithmetic, and includes a study of both subject-matter and methods. Elective in all courses except the country school teachers' course. Omitted 1916-1917.

Algebra 1. The course covers algebraic notation, the fundamental operations, factoring, graphs, and simple

equations in one unknown. Both in this course and in Algebra 2 applications are made to simple problems in physics, mechanics, and geometry. Required IX. and XI. c.

Algebra 2. The topics studied are highest common factor, lowest common multiple, fractions, graphs, involution and evolution, simultaneous equations of the first degree, exponents, radicals, complex numbers, and quadratic equations. Required IX. and XI. c.

Plane Geometry 1. Books I. and II. In all the courses in geometry, special attention is paid to the solution of original exercises. Required X. and XII. c.

Plane Geometry 2. Books III., IV., and V. Required X. and XII. c.

Solid Geometry. Books VI., VII., VIII. Prerequisites, Plane Geometry 1 and 2. Elective in all courses.

Advanced Algebra 3. The subject-matter includes the theory of quadratic equations, simultaneous equations of the second degree, ratio and proportion, arithmetic, geometric, and harmonic progressions and logarithms. A study is made of determinants and their application to sets of linear equations, the binomial theorem, and so much of the theory of equations as to include the elementary transformations, location of roots, Sturm's theorem, Horner's method of approximation, binomial equations, and the solution of the general cubic and biquadratic. Prerequisites, Algebra 1 and 2. Elective in all courses.

Plane Trigonometry. This course includes the definitions and properties of the trigonometric functions, the deduction of important trigonometric formulas, the use of tables of logarithms, the solution of plane triangles, and various practical applications. Elective in all courses.

Plane Analytic Geometry. This is an elementary course in plane analytic geometry, and deals in particular with the properties of the conic sections, including a discussion of the general equation of the second degree. Prerequisite, plane trigonometry. Elective in all courses.

Students who have completed algebra or geometry before entering, will substitute an elective unit for the required courses.

GEOGRAPHY

The object of the work in geography is to give the pu-

pils a knowledge of the earth's surface as the home of man, to show how physical conditions of the earth's surface have influenced life conditions, such as the distribution of peoples and industries, and to show how man has been able to become master of natural conditions, such as aridity of climate.

An attempt is made to have the pupil learn to picture for himself as clearly as possible those parts of the world that he has not seen, and for this the department is well equipped with maps, globes, relief models, pictures, and lantern slides, as well as books and pamphlets. There is also a good collection of industrial materials for illustrating the commercial side of geography.

1. In this course a study is made of land forms and their development of atmosphere and climate and of the influence of these upon the distribution of people, their modes of living, industries, and institutions. Most of the applications will be made in the United States. The aim of the course is to give not only the elements of geography but training in clear thinking and some time will be given to methods of presentation of the subject. Text: Salisbury, Barrows, and Tower, *Modern Geography*.

2. *Geography of South America and North America*. Prerequisites Geography 1 or 3 or their equivalent. Elective in the two-year course, required in other courses. Second term.

3. *The Basis of Geography*. In this course the principles of physical geography are studied and through typical examples are shown to be an important determining element in the mode of living, industries and distribution of peoples. Required in the two-year course. Offered both terms. Text: Salisbury, Barrows, and Tower. *Essentials of Geography*.

4. *Geography of Europe*. Offered in alternate years beginning 1914. First term: Elective for seniors and for juniors not in the two-year course.

5. *Commercial Geography*. Second term. Elective for juniors and seniors.

6. *Special Methods in Geography*. A six weeks' course, required in the junior year for those who are completing the V. c. course. *Omitted* 1916-1917.

7. *Geology*. Elective for seniors and for juniors, except juniors in the two-year course. Alternates with Geography 4. First term. *Omitted* 1916-1917.

PHYSICAL SCIENCES

Physics 1, 2. A year's work in physics is offered. While the subject is not required, students in the four and five-year courses are advised to elect it in the eleventh year. It may also be elected in the junior and senior years. Elementary algebra and plane geometry are prerequisites.

Two double periods a week are devoted to laboratory work. About forty problems, nearly all of which are quantitative in character, are worked out in the laboratory. Especial emphasis is given to accurate measurements of extension and mass, determinations of densities, verifications of the laws and principles of mechanics, and heat problems involving expansion and calorimetry. A few problems in sound and light and a number in electricity are introduced, but it is believed that the work in measurements, mechanics, and heat, is best adapted to a one-year course in the laboratory and of such fundamental value in the study of physics as to deserve especial attention and most of the time available.

The laboratory is well equipped with apparatus, most of which is in duplicate, so that a whole section of students can work on the same problem at the same time.

Three periods a week are given to recitations based upon the laboratory work and the text book, to the demonstration by the teacher with simple experiments of physical principles, and to the applications of these principles in numerous problems.

Though the value of formulæ as brief and concise statements of law is emphasized, students are required to give a logical analysis of each problem and no mere substitution of values in a formula is accepted. It is believed that such a process is mechanical and not conducive to mental activity or power.

Chemistry 1, 2. One year's work in general inorganic chemistry is offered as an elective in either the junior or senior year. The work consists of two laboratory periods of double length and of two recitations each week throughout the year.

The greater part of the time is given to the study of non-metals because of their peculiar value in the development of chemical theory.

About two months is given to the study of the metals and some attention is given to the matter of solubilities of salts. It is intended that students completing the year's work shall have some skill in manipulation and be ready for the intelligent study of qualitative analysis and other branches of applied chemistry.

In the laboratory the preparation and properties of a number of common elements and compounds are studied, and a number of quantitative experiments, illustrative of chemical law, performed. The laboratory is well equipped.

Many problems in chemical arithmetic are introduced during the year.

General Science 1, 2. These courses are elective in the ninth, tenth and eleventh years. They are intended to furnish valuable information concerning things of common experience, to provide a mass of knowledge that will be useful in the later attack on the special sciences, and to arouse an interest in the sciences and a desire to pursue them further. Many experimental demonstrations of facts and principles are made before the class but there is no individual laboratory work.

Course 1 includes a study of the air, the composition and various forms of water, the seasons and weather, the manufacture of foods by plants, water supply and sewage disposal, and the action of bacteria in producing disease. One period daily for one-half year. Offered both terms.

In Course 2, the following general topics are considered: work and energy, simple machines, the nature of heat, composition and structure of soil, the action of water on the earth's surface, plant and animal life on the earth. One period daily for one-half year.

BIOLOGICAL SCIENCES

By means of these courses students are brought into contact with organic nature and obtain an insight into the structures, processes, and environmental relations of living beings. Biological study gives opportunity for accurate and complete observation, for correct interpretation of objects, and for the derivation of inferences, and generalizations. In addition to these methods of thought, the facts and observations are in themselves interesting

and important. They aid in establishing a relationship between the student and his organic environment. They form the scientific basis for the understanding of agriculture, sanitation, hygiene, and other economic phases of biology.

Botany 1. This course presents an introduction to plant life. It deals mostly with the structures and physiological processes of the higher plants. In so far as is consistent with the scientific development of the subject, materials of economic interest are used. Elective in the two-year course, required in all others. Offered both terms.

Botany 2. This course takes up the classification of plants on an evolutionary basis. The life histories and the economic importance of the several major groups of plants are considered. Several weeks are devoted to the fungi and bacteria in relation to agriculture, hygiene, and sanitation. Elective in the two-year course, required in all others. Second term. Prerequisite, Botany 1.

Botany 3. Plant Ecology. The study of plants and plant organs in relation to the factors of the environment. Lectures, laboratory work and assigned readings. Prerequisites, Botany 1 and 2. Elective in all courses. First term, 1917-1918.

Botany 4. Plant Ecology. A study of the associations of plants in nature. Most of the time will be spent in a study of the plant associations of the vicinity. Some attention will be given to the methods of identification of plants, and the preparation of an ecological herbarium. Prerequisites, Botany 1, 2, 3. Elective in all courses. Second term, 1917-1918.

Botany 5. The General Principles of Evolution. Variation, heredity, environment, and selection will be the topics discussed. Lectures and assigned readings, with some laboratory work. Prerequisites, Botany 1 and 2, and Zoology 1 and 2. Elective in all courses. First term. *Omitted* 1916-1918.

Botany 6. The Green Algae. The structure, classification, and life histories of the green algae, especially those of Illinois will be considered. Some attention will be given to the occurrence and periodic appearance of species in nature. Lectures, laboratory, and field work. Elective in all courses. Prerequisite, Botany 1 and 2. Second term. *Omitted* 1916-1918.

Botany 7. The Local Flora. Collection, identification, and preservation of plants growing in the vicinity of Charleston. Lectures and laboratory work on the principal plant families, orders, and larger groups; their classification and evolutionary relations. Elective for students in the last three years. First term, 1916-1917.

Botany 8. Field Botany. A means of developing out-of-door acquaintance with the common native and planted trees, shrubs, and smaller plants in their everyday surroundings in town and country. Field trips, lectures, laboratory work, assigned readings. Full notes are made in the field. The names, marks of recognition, and classification of plants; manner of growth, notable features of structure or physiology; habitat, geographic, and seasonal relations; and economic status, are studied. One three-hour and two one-hour periods each week. Elective for students in the last three years. Second term, 1916-1917.

Elementary Zoology 1, 2. The main purposes of this course are to train pupils to make accurate observations on animals and to form correct conclusions and also to become somewhat acquainted with the animal kingdom as a whole.

In Course 1, the life-processes of animals are given particular attention. Structural features are considered only as far as necessary for the understanding of these processes. Facts concerning life-histories, habits, and economic importance of animals are studied. The order of treatment in this course is from the simple to the complex, from the protozoans to the vertebrates.

Course 2 deals to a large extent with the more common and important species of animals of temperate America. Birds, mammals, and insects are studied. As far as possible the information is obtained through field studies, but much of it needs to come from laboratory and recitation work. Efforts are made to acquaint pupils with common animals, especially birds, so that they will readily recognize them in the field. Facts concerning economic importance are given especial prominence.

The class meets for three double periods a week throughout the year. The course is elective for students in the last three years.

Advanced Zoology and Special Methods 3, 4. The aims and methods in these courses are similar to those of

the elementary courses, but the work is more intensive. Certain groups of animals and animal habitats are studied in considerable detail. Methods of using zoological literature, of collecting and preserving specimens, and of recording observations by notes, photographs, and other means, are taught. An important feature of the course is the making and using of identification keys by pupils.

The course should prepare teachers for doing effective nature work in the grades and for teaching zoology in high schools. Pupils should also become able to carry on some zoological investigations independently.

Only pupils who have completed Course 1 or its equivalent may take this course. Five sixty-minute periods are given to the work each week.

Human Physiology and Hygiene. The tissues and organs of the body are studied in this course as to their structure, function, hygiene, along with its important life processes. Comparisons are made between the body of man and that of lower animals, thus relating the subject to zoology.

The work consists of recitations with some laboratory exercises during four or five periods a week. Students in the senior year and those of the second year in the course for country school teachers are required to take the course.

AGRICULTURE

In agriculture, Courses 1, 2, 3, and 4 are offered as electives in the tenth and eleventh years, Courses 1 and 2 alternating with Courses 3 and 4. Courses 3 and 4 will be offered in 1916-1917.

Courses 5, 6, 7, and 8 are offered as junior and senior electives, 5 and 6 alternating with 7 and 8.

Courses 7 and 8 will be offered in 1916-1917.

Course 9 is required in the second year of the two-year course for country school teachers and is offered in both terms.

1. (a) *Milk and Its Products.*
- (b) *Poultry.*

This course includes a study of milk and its products; testing for fat; acidity; adulteration; bacteria. Scoring milk, butter, and cheese. Care of milk.

The second half of the course includes a study of the breeds of poultry; care of poultry and feeding for fattening and egg production. Importance of poultry raising. Caponizing. Lectures, recitations, and laboratory work. *Omitted 1916-1917.*

2. *Elementary Soil and Plant Studies.* This course includes the study of plant growth and its relation to the soil. Elements required for growth. Limiting factors. Fertilizers. *Omitted 1916-1917.*

3. *Elementary Stock Judging.* A study of the make-up of the economic animals, conformation and its relation to production, types and breeds.

4. *Orcharding and Gardening.* A study of the principles of fruit growing and vegetable gardening. Spraying and pruning, insect enemies and diseases of fruit trees and of vegetables, their habits and control. The spray calendar.

5. *Farm Crops.* A study of economic cereal and forage crops. Seed identification; crop requirements; insect enemies of crops with special attention given to control. Diseases of crops. Special attention is given in this course to alfalfa culture. Lectures, recitations, and laboratory. *Omitted 1916-1917.*

6. *Animal Feeding.* A study of the principles involved in feeding animals, digestion, absorption and assimilation. Balancing rations, the nutritive ratio, compounding rations. Best methods of feeding for profit in producing milk, pork, eggs, wool, and work. *Omitted 1916-1917.*

7. *Soil Physics.* A study of formation and classification of soils, soil water, temperature, tilth, soil organisms, tillage. These factors are studied in their relation to plant growth. Lectures, recitations, and laboratory.

8. *Elementary Soil Fertility.* A study of the principles of soil improvement: study of experimental data established by Illinois stations. Influence of various kinds of fertilizers. Commercial fertilizers. Limiting factors. Crop rotations and farming systems.

9. X. c. *Extension and Education.* This course is designed to give the student a working knowledge of the elementary principles involved in agricultural development. Topics are studied in accordance with the outline for teaching agriculture in the rural schools as given in the State Course of Study. The place of the teacher in the community. Practical leadership and methods of

promotion of best principles. Required in the second year of the two-year course for country school teachers. Offered both terms.

DRAWING

The courses in drawing and painting aim to familiarize the student with the fundamental art principles, in order that he may use them in his everyday life, in and out of the schoolroom; and at the same time to awaken in him a love and appreciation of the beauties of the out-of-door world. Drawing then becomes a language for the expression of his ideas and emotions.

One year of drawing is required for graduation. This work is taken in the junior year, unless it has already been completed.

1, 2. First year work for students who take the two year certificate course. The class meets twice a week for fifty minute periods. Some outside work is required. The course consists of the discussion and studio-practice in drawing in outline and values from nature,—as flowers, trees, landscapes; color theory; principles of perspective as applied to the drawing in outline of still life objects,—as pottery forms, boxes, books, furniture and buildings. The last half of the course consists of drawing and painting of still life objects; figure drawing; lettering; elements of composition and design, harmony of colors as applied to borders, surface patterns, posters.

The mediums used are: pencil, crayons, charcoal, brush and ink, water color, white and tinted paper.

3, 4. First year work for juniors who have not had Course 1, 2.

5, 6. *Elective Drawing*. An advanced course, having as its prerequisite the above course or its equivalent. The class meets four times a week for fifty minute periods. An hour a day of outside work is required. This course is for students who are especially interested in drawing and wish further work in that subject. The course consists of the study and application of color in decorative art. It includes advanced work in design, water color and charcoal; the study of Oriental colors; color harmonies; figure drawing as applied to poster work; lettering and problems in illumination.

INDUSTRIAL EDUCATION

1, 2. *Elementary Wood-working.* A course in the technical processes of wood-working, emphasizing skill in the use of hand tools. The use of wood-working machinery is permitted when the student has demonstrated sufficient skill in the use of hand tools. Part of the class recitation will be used in the discussion of various allied subjects. Note book work will include the study of lumbering, wood-working machinery, hand tools, joinery, wood finishing, and elementary cabinet construction. Elective in the tenth and eleventh years.

3, 4. *Mechanical Drawing.* A thorough and practical course in elementary mechanical drawing. When students have finished required work they will advance to more difficult plates as their ability justifies. This course being a prerequisite to Course 5, 6, much attention is given to plates relative to cabinet, furniture and architectural construction. Elective in the ninth, tenth and eleventh years.

5, 6. *Cabinet Work.* The history and development of furniture making, the designing, construction, and finishing of cabinet work and furniture, form the general outline of this course. Bench work and machine processes are taught. Inspection visits, discussion, and demonstrations will be given a place. Elective for juniors and seniors.

7. *Industrial Arts.* Industrial work for teachers and supervisors of elementary schools. The important processes of industry are used as subject matter and note book work. Paper, wood, reed, raffia, clay, and copper are used in making the required problems.

The construction work suggested in the state course of study is given much consideration. Required in the second half of the senior year. Offered also in the first term.

MUSIC

The work in music is designed to cultivate a good singing voice, to instill a taste for good music, to induce good musical interpretation, and to give facility in sight reading. A view is taken of the subject which recognizes the educational and moral value, as well as the aesthetic value.

During commencement week, the children of the Elementary School give an operetta under the direction of the teacher of music. The "Fairy Grotto" by G. M. Stratton, "Hans and Gretel" by Humperdinck and Bohm, "Cinderella" by E. Cuthbert Nunn, "Snow White and The Seven Dwarfs" by George F. Root, and "Princess Chrysanthemum" by C. King Proctor have been given.

1. *Elementary Sight Singing and Ear Training.* Study of major and minor scales, pitch names, note values, rhythm, key signatures, elements of notation. Scale construction and transposition. Two and three part songs.

Required in first year of the certificate course.

2. *Advanced Sight Singing and Ear Training.* Bass clef. Four part songs. Child voice. Methods. Melody writing. Materials for use in grades.

Required in first year of the certificate course.

3. *Specific Study of Methods.* Child voice. Sight singing and ear training.

Required of seniors in the second term, but offered also in the first term.

4. *Public School Music.* Survey of music in the public schools. Methods and the child voice.

5. *Public School Music.* Art of conducting. Chorus selection and arrangement. Material for use in the public schools. Short survey of the development of music.

Elective A. B. Prerequisite, Music 1, 2, or the equivalent.

CONSERVATORY COURSE IN MUSIC

The school will offer this fall courses in piano and in voice culture. The work will be adapted to the individual needs of the students. The instructor will advise each pupil as to how many lessons and what kind of lessons ought to be taken. In the beginning classes in piano, from two to four pupils will be admitted to one hour lessons in each class, while only two pupils will receive instruction at the same time in the more advanced piano classes.

Piano 1. Elementary Class. Hand culture, touch, music, notation, rhythm, ear training. Diabelli, Studies, Opus 125; Gurlitt, Studies, Opus 82; Playdy, Technical Exercises; Loeschhorn, Studies, Opus 65 and Opus 84;

Kunz, Canons; Clementi, *Vorstufe*; sonatinas and easy pieces.

Piano 2. Elementary Class. Scales and arpeggios. Heller, *Studies*, Opus 47 and Opus 46; Burgmüller, Opus 100; Krause, *Trill Studies*; Clementi, *Vorstufe*; Duvernay, Opus 176 and Opus 120; Bach, *Kleine Praeludien*; Bach, *Invention* (two parts); Beethoven, *Sonata* Opus 49, No. 1; pieces by Clementi, Kuhlman, Reinecke and others.

Piano 3. Middle Class. Burgmüller, Opus 109; Bach, *Invention* (three parts); Henselt, *Preparatory Studies*; Gormo, *Pedal Studies*, Part I. and Part II.; Heller, *Studies*, Opus 45; Jensen, *Wanderbilder*; Mendelssohn, *Songs Without Words*; Czerny, *Forty Daily Studies and School of Velocity*; sonatas and solo pieces by Mozart, Haydn, Beethoven, and modern composers.

Piano 4. Middle Class. Cramer, *Etudes*; Bach, *Well-tempered Clavichord*; Bach, *Praeludien*; Burgmüller, Opus 105; Clementi, *Gradus ad Parnassum*; Mozart, *Conzertos*; compositions by Schubert, Mendelssohn, Schumann, Weber, Beethoven, Raff, Moskowski, Chopin's *Nocturnos* and *Waltzes*.

Piano 5. Upper Class. *Gradus ad Parnassum*; Czerny, *Finger Dexterity*; Chopin, *Etudes*, Opus 10 and Opus 25; sonatas by Weber and Beethoven; ensemble pieces by Mendelssohn, Schumann, Schubert and Beethoven.

Piano 6. Upper Class. Czerny, *Schule der Virtuosen*; Weber's *Conzertstücke*; Schumann, *Kreisleriana*; Scarlatti, *Sonatas*; Chopin, *Etudes and Compositions*; Schumann, *Fantasie Stücke*; compositions by Moskowski, Henselt, Rubinstein, Saint-Sains, Liszt, Tschaikowsky.

In voice culture, special stress is laid on correct breathing, correct placing of the singing and speaking voice, distinct enunciation, and artistic interpretation, development and control of the emotional faculties, physical and mental development, tone quality and registers.

Voice Culture 1. Exercises by Lilli Lehman; Viardot I.; Solfegios by Concone, Opus 30; easy songs by modern composers.

Voice Culture 2. Concone, fifty lessons; Viardot I and II.; Panofka, twenty-four Solfegios; songs by Schubert, Schumann, Mendelssohn, Rubinstein.

Voice Culture 3. Twenty-five Solfegios by Concone;

thirty-six exercises by April; eighty-six exercises by Panofka; songs and duets by Schubert, Schumann, Grieg, Reinecke, Hildach, Mendelssohn, Gounod.

Voice Culture 4. Lamperte Study di Bravura, No. I. and II.; Lüttgen, Studies for Velocity; Bordogni and Rhigini; songs in French, German, Italian and English.

Voice Culture 5, 6. Lamperte, Studies No. III.; arias, duets, trios and quartettes from operas and oratorios.

Recitals. Something is done toward introducing pupils to composers, both classical and popular, by means of recitals at which vocal and instrumental works are interpreted by the instructor. The following programmes have been given: Beethoven, Liszt, Schubert, Schumann, Grieg and Chopin, German Folk Songs, Elliland by Alexander Von Fielitz, The Queen of the Sea by Hummel, Schiller's Lay of the Bell by Romberg.

HOME ECONOMICS

The work of the home economics department is elective for juniors and seniors and for students in the eleventh year. No credit will be given for less than a year's work in either domestic science or domestic art.

Domestic Science

Domestic Science 1, 2. This course will include selection and preparation of staple foods, a study of food principles and theory of nutrition. Lectures, recitation, and laboratory practice.

Domestic Science 3, 4. A further study of foods, advanced cookery of an experimental nature, planning of meals and table service, and some attention given to planning of courses of study.

This course will also include a series of lessons in dietetics, laundering, and household management. Open to students who have completed domestic science 1, 2.

Domestic Art

Domestic Art 1, 2. Hand and machine sewing; study of stitches used and their application to garments; care and use of machines; drafting patterns; and making of undergarments, shirt-waists, and dresses. Throughout this course a study is made of textiles and weaves with reference to manufacture, use, and durability.

Domestic Art 3, 4. Dressmaking, millinery, and costume design. Open to students who have completed Domestic Art 1, 2.

Dressmaking includes planning and making of dresses of wash, woolen, and silk materials; the making of fitted linings, and the use of these on dress forms for fitting and draping dresses.

Millinery includes the making, covering, and trimming of buckram frames; the making and covering of wire frames; blocking of hats of buckram; and making of flowers and other trimmings.

Costume Design. One double period once a week. The course in costume design will be taken up from a constructive standpoint. It will include a study of the relation and influence of materials upon the design of the costume; a study of harmonious color and line combinations in relation to gowns and to the individual.

Students provide their own material subject to the approval of the instructor.

PHYSICAL EDUCATION FOR WOMEN

The department of physical education provides instruction and means for the improvement and preservation of health and the harmonious development of the body.

It is the purpose of the department to make a careful physical examination of every student at the beginning of each fall term, at the close of the school year, and at such intervals as seem necessary. In accordance with this examination, personal advice and suggestions regarding habits of life, recreation, study, and exercise best suited to individual development are given by the special teacher in charge.

Violent exercise is discouraged, but students are required to take rational exercise for the proper development of the body and for correcting improper postures in standing, sitting, and walking.

Every student in school, unless excused for special reasons by a physician or by the physical director, is required to take the work of this department for the first two years of her course. For the second year's work a choice is given between Course 3, 4 and Course 5, 6. Course 5, 6 is also open as an elective to students, who have completed the two required years of gymnastic work

and a half unit of credit is given to them. A half unit of credit is given in Course 10.

Each pupil is required to have a gymnasium suit obtained at the school, in order that suits may be uniform in color and pattern. The cost including shoes is about five and a half dollars.

The work in the Elementary School provides instruction in gymnastics by the physical instructor five times a week. In the lower grades formal gymnastic work is used but little, muscular activity being gained through educational play. In the grammar grades the work is more formal, Swedish free exercises being used in combination with games and folk dancing. In the fall and spring the work is conducted out of doors.

Physical examinations and corrective gymnastic work are given in the Elementary School by special arrangement.

1, 2. *First Year.* Athletic sports, free developing exercises, Swedish gymnastics, elementary apparatus work, elementary balance steps, gymnastic games, folk dancing, lectures in hygiene, in which careful consideration is made of the various conditions of life, such as air, diet, sleep, exercise, bathing. Required of all first year students.

3, 4. *Second Year.* Athletic sports, free developing exercises, advanced gymnastics, advanced apparatus work, gymnastic games, balance steps, folk dancing. Required of all second year students who do not elect Course 5, 6.

5, 6. *Theory of Gymnastics and Practice Teaching.* The purpose of this course is (1) to make clear the objects of definite gymnastics; (2) to study the selection and progression of exercises; (3) to give instruction in preparing and teaching gymnastic exercises and games. Practice teaching is done with sections of the class.

PHYSICAL EDUCATION FOR MEN

1, 2. Regular exercises in the gymnasium. Free developing exercises, marching, tumbling, apparatus work and games.

3, 4. Regular exercises in the gymnasium. Advanced work on the horse and parallel bars, advanced steps and games.

During the spring and fall the work will be on the athletic field and consist of games and track work. During the year lectures will be given on hygiene and kinesiology.

5, 6. *Coaching for Men.* This course will include coaching for foot-ball, basket-ball, base-ball, and track. It will be mainly class room work and will be for those who expect to have charge of athletics in high schools.

THE LIBRARY AND READING ROOM

The library occupies two rooms in the southwest corner of the first floor of the building. It now contains over 19,500 books and pamphlets.

The reference books, bound periodicals, and reserve books are shelved in the reading room. Here are also found the current numbers of over one hundred twenty-five periodicals, including, in addition to those of general interest, many devoted to special subjects. The books for general circulation are kept in the stack room, to which all students of the Normal School and pupils of the seventh and eighth grades are admitted. For grades lower than the seventh schoolroom libraries are provided. The library has a dictionary card catalogue and the books are classified according to the Dewey decimal system. There is a large collection of classified pictures for use in all departments. Two trained librarians are in charge, giving necessary aid and instruction to students in the use of books.

The Use of the Library

The aim of this course is to teach the students to use the library with some degree of skill. Certain courses offered require considerable work in the library, including reading, hunting up references, and looking up assigned topics. To do this work with the wisest expenditure of time and effort, students should know how to use the card catalogue, magazine indexes, and some common reference books. Several lessons, which are required of all students, are given at the beginning of each term throughout the different years of the course. Teachers of required subjects omit one or two recitations each term in order to give the time necessary for these reci-

tations. An attempt is made to have these lessons prepare for the library work likely to be required for the term. In the senior year a brief course in literature for children is given with required reading of books for children in the different grades.

Periodicals

American Historical Review
 American Library Association—Book List
 American Library Association—Bulletin
 American Magazine
 American Mathematical Monthly
 American Naturalist
 American Political Science Review
 American School Board Journal
 Arts and Decoration
 Atlantic Monthly
 Biological Bulletin
 Bird Lore
 Book Review Digest
 Botanical Gazette
 Botanisches Centralblatt
 Breeder's Gazette
 Bulletin of Bibliography
 Catholic World
 Century Magazine
 Chicago—Department of Health—Bulletin
 Classical Journal
 Classical Weekly
 Collier's
 Cornell University—Rural School Leaflet
 Country Gentleman
 Country Life in America
 Countryside Magazine and Suburban Life
 Craftsman
 Cumulative Book Index
 Dial
 Drama
 Edinburgh Review
 Editor
 Education
 Educational Review
 Educator-Journal

Elementary School Journal
English Historical Review
English Journal
Etude
Forestry Quarterly
Garden Magazine
Geographical Journal
Geographical Review
Geographical Teacher
Good Housekeeping
Government Publications
Harper's Monthly Magazine
Harper's Weekly
History Teacher's Magazine
Hoard's Dairyman
Illinois Association of Teachers of English—Bulletin
Illinois State Historical Library—Journal
Independent
Information
Information Quarterly
International Studio
Journal of Agricultural Research
Journal of American History
Journal of Animal Behavior
Journal of Economic Entomology
Journal of Education (*London*)
Journal of Education (*New England*)
Journal of Educational Psychology
Journal of Geography
Journal of Geology
Journal of Home Economics
Journal of Philosophy, Psychology, and Scientific
Methods
Journal of Political Economy
Ladies' Home Journal
Library Journal
Life
Literary Digest
Little Folks
Living Age
Manual Training Magazine
Mathematical Gazette
Mathematics Teacher

Mentor
Mind and Body
Modern Philology
Musical America
Nation (*New York*)
National Education Association—Bulletin
National Geographic Magazine
Nature
Nature Study Review
New Music Review
New Phytologist
New Republic
New York Public Library—Bulletin
Normal Instructor
North American Review
Outing
Outlook
Pan-American Union—Bulletin
Pedagogical Seminary
Photo Era
Physical Review
Pictorial Review
Plant World
Political Science Quarterly
Popular Science Monthly
Prairie Farmer
Public Libraries
Reader's Guide to Periodical Literature
Reader's Guide to Periodical Literature—Supplement
Review of Reviews
Rhodora
Rural Educator
St. Nicholas
Saturday Evening Post
School and Home Education
School and Society
School Arts Magazine
School Bulletin
School Century
School News
School Review
School Science and Mathematics
Science

Scientific American
Scientific American—Supplement
Scientific Monthly
Scottish Geographical Magazine
Scribner's Magazine
Survey
Teachers College Record
Tennessee—State Geological Survey—Resources of
Tennessee
Torrey Botanical Club—Bulletin
U. S. Experiment Stations—Experiment Station Record
U. S. Library of Congress—List of State Publications
U. S. Superintendent of Documents—Monthly Catalogue
U. S. Weather Bureau—Monthly Weather Review
Unpopular Review
Wallace's Farmer
Western Teacher
Wisconsin Library Commission—Bulletin
Woman's Home Companion
World's Work
Youth's Companion

Newspapers

Charleston Daily Courier
Charleston Tribune
Chicago Herald, Daily and Sunday
Chicago Tribune, Daily and Sunday
Christian Science Monitor
Mattoon Commercial Star
New York Times, Daily and Sunday
St. Louis Globe-Democrat, Daily
St. Louis Republic, Daily

STUDENTS**GRADUATE STUDENTS**

Glosser, Stanley Ivan	Charleston
Hagan, Warren Lynn	Neoga
Wilkinson, Cecil Herbert	Charleston

SATURDAY STUDENTS

Ross, Lela Beatrice	Charleston
---------------------------	------------

SENIOR CLASS

Adams, Hugh Moore	Charleston
Anderson, Earl William	Charleston
Anderson, Russell Howard	Jewett
Ashbrook, Anna Lois	Charleston
Bailey, Mabel Claire	Olney
Bails, Ernest Roscoe	Charleston
Bensley, Opal Edna	Charleston
Black, Elsa Frances	Charleston
Blankenbaker, Zeta Fisher	Charleston
Bolcum, Gertrude Ethel	Wasco
Bolcum, Myrtle Jane	Wasco
Briggs, Mary Anderson	Charleston
Brokaw, Mary Ruth	Charleston
Brown, Eos Olaf	Pana
Brown, Ethel Elizabeth	Mattoon
Bunn, William Benton	Olney
Burch, Kate Pearle	Ashmore
Bussard, Esther Elizabeth	Toledo
Buzzard, Gail	Beecher City
Cassady, Minnie Ellen	Paris
Climer, Dale Lena	Palestine
Coley, Beulah Marie	Oakland
Conrad, Rhoda Mille	Charleston
Cooper, Herman Lloyd	Charleston
Couchman, Alice Irene	Sumner
Cowen, Joy Batchelder	Harristown
Craft, Myrtle Lou	Charleston
Crowe, Stanley Maxwell	Charleston
Dare, Bernace Marie	Chesterville
Davis, Ruth Gossett	Charleston

Dawson, Inez Olive	Cooks Mills
Durbin, Elba Anderson	Charleston
Ellis, Effie May	Mattoon
Eversole, Selma Anna	Hindsboro
Fitch, Thelma Grace	Charleston
Frantz, Gertie Mae	Oakland
Funkhouser, Syble Jane	Mattoon
Fye, Paul Matthews.....	Mattoon
Gard, Elizabeth	West Union
Goble, Ivan Bean	Charleston
Goodman, Alberta Marie.....	Decatur
Graham, Bess Lenora	Hillsboro
Griggs, Georgia Gladys	Robinson
Haddock, Muriel May Genevieve	Charleston
Harbert, Grace Genevieve	Hoopston
Harris, John Edgar	Coffeen
Hartmann, Marie Margaret.....	Decatur
Hays, Verla Gladys	Charleston
Hooppaw, Bessie	Charleston
Hutchason, Nelle Christine	Charleston
Keeran, Marie	Toledo
Keith, Elden Franklin	West York
Kenny, Corinne Gertrude	Charleston
Kerr, Rhoda Elizabeth	Charleston
Killie, Evelyn Hope	Kinmundy
Knowles, June Amanda	Edwardsville
Lashbrook, Violet Eva	Charleston
Lauher, Lillie May	Charleston
Leach, Edgar Shelby	Mt. Carmel
Leigh, Frances Paris	Jerseyville
Lozier, Jessie Kathleen.....	Arcola
Martin, Alice Evelyn	Arthur
Mason, Lena Marie	Charleston
McDougle, Ella Moore	Humboldt
Meehan, Mary Angela	Alton
Newlin, Olive Blanche	Charleston
Pearcy, Ruby Dean	Epworth
Peters, Ruth Jane	Paris
Phillips, Andrew Sheldon	Sullivan
Root, Paul Vernon	Charleston
Russell, Pearl	Toledo
Sexson, Nellie Edith	Charleston
Sharp, Serena Elizabeth	Casey
Shea, Frances Katharine.....	Mattoon

Shortess, Pauline	Charleston
Shrader, Dora	Humboldt
Shuey, Vera Anna	Charleston
Smith, Lulu Inez.....	Greenup
Sprout, Glenna Juanita	Charleston
Stewart, Nora Rachel	Charleston
Stitt, Elizabeth Catherine	Toledo
Stitt, Leora	Toledo
Stone, Ruth Evelyn	Charleston
Struif, Margaret Mary	Alton
Timm, Anna Margaret	Arthur
Todd, Leah Tina	Charleston
Wade, Exia M.	Paris
Welch, Fern	Villa Grove
Wiley, Flossie	Kansas
Wiley, Opal Theresa	Charleston
Willcockson, Mary	Pana
Wilson, Viola Edythe	Hindsboro
Wise, Althea Mary.....	Newton
Yarnell, Maude	Decatur
Zehner, Ralph Lackey	Lawrenceville

JUNIOR CLASS

Allison, William Weger	Flat Rock
Anderson, Mabel Ruth	Danville
Baker, Charles William	Charleston
Bales, Mable Erelene	Charleston
Barker, Vera Enola	Windsor
Beall, Leona Catherine.....	Paris
Behrens, Frances Isabel	Charleston
Bell, Mary Elisabeth.....	Seymour
Bilyeu, Katherine Mary.....	New Douglas
Black, Sara Isabelle	Charleston
Bone, Helen Irene	Palestine
Bonnell, Ruth	Brocton
Bowser, Alva Ellsworth.....	Charleston
Brown, Laura May	Charleston
Brown, Myles L.	Trimble
Burt, Mamie Elizabeth.....	Mattoon
Buxton, Edna Florence.....	Shobonier
Carrell, Elwood Alfred.....	Greenup
Caldwell, Harold Wilford	Charleston
Colvin, Leland Chaney	Charleston
Comer, Eric	Charleston

Cox, Eva	Charleston
Crimmins, Helen Genevieve	Mattoon
Crispin, Lasca Dewey	Charleston
Dale, Ferne Christine	Seymour
Dale, Lulu Grace	Mahomet
Demaree, Leafy Pearl	Charleston
Dickinson, Beulah E.	Flat Rock
Dixon, Greeta	Villa Grove
Donaldson, Edna Flo	Charleston
Doty, Esther Woodson	Charleston
Driscoll, James	Charleston
Edman, Eunice	Charleston
Edwards, Mary Angela	Buffalo
Eginton, Hazel Murray	Westfield
Endsley, Fred Starr	Charleston
Eveland, Zella Irene	Mattoon
Fitch, Ralph Dean	Charleston
Foreman, Audra Lois	Newton
Forster, Arthur Cecil	Paris
Fox, Claude Edward	Marshall
Fox, Dorothy	Allendale
Gaiser, Elsie Lorene	Charleston
Harris, Frank Charles	Coffeen
Harris, Nellie Juanita	Coffeen
Harris, Ruth Irene	Neoga
Harshbarger, Edna Mary	Ivesdale
Haworth, Dot	Danville
Higgins, Neva Joy	Neoga
High, Lennie Leroy	Bement
Hills, Thirza Louise	Mattoon
Honn, Edna Louise	Kansas
Huffman, Edith Elizabeth Foy	Charleston
Hutton, Eugene Harold	Charleston
Jenkins, Charles Burnap	Charleston
Johnson, Vivian Morea	Charleston
Johnston, Donald Compton	Charleston
Johnston, Sara	Charleston
Judd, Ida Virginia	Cisne
Keagle, Reva Jo	Maroa
Kelso, Corinne Marie	Mattoon
Kerns, Eulalee	Arcola
Kincade, Ercel LaFern	Charleston
Kruger, Grayce Lavana	Arcola
Kruger, Ruth Pearl	Arcola

Leist, Claude	Paris
Letsinger, Gladys Dot	Newton
Lockwood, Cora Mable	Woodstock
Long, Grace Emily	Charleston
Loving, Harold Robert	Charleston
Lyle, Mary Stewart	Shelbyville
McCrory, Margaret	Charleston
McGeehon, Fern Gertrude	St. Elmo
McKenzie, Mabel Beatrice	Charleston
Mealey, Margaret Ann	Charleston
Merritt, Madaline Grace	Charleston
More, Julianne	Charleston
Muns, Elva Lee	Pesotum
Newlin, John Ewart	Robinson
O'Hair, Mayme Lee	Charleston
Orr, Agnes Jane	Tuscola
Patton, Marguerite	Charleston
Payne, Alma Tobitha	Camargo
Peck, Ben Ray	Camargo
Phillippe, Zula Elizabeth	Champaign
Pollard, Marguerite Marie	Charleston
Porch, Edna Lucile	Tuscola
Prather, Lillie	Charleston
Pyle, Harry Donald	Nokomis
Quatman, Ida Helen	Altamont
Reed, Fay	Edgewood
Reed, Oma Ruth	Charleston
Reeder, Kathryn May	Arthur
Reeds, Rose Edna	Hindsboro
Reeser, Hazel Phydalah	Arcola
Reininga, Grace	Oak Park
Richards, Wilma Lois	Palestine
Richey, Dessie Gladys	Palestine
Richman, Zella Faye	Villa Grove
Robinson, Clara Louise	Charleston
Roderus, Mary Bell	Charleston
Root, Mary Helen	Charleston
Russell, Mabelle Marie	Toledo
Schahrer, Anna Magdalene	Charleston
Schahrer, Martin Otto	Charleston
Schmaelzle, Otto Ignatius	Charleston
Shaffer, Lyona Dell	Oakland
Short, Verna G.	Urbana
Smith, Anna Myrtle	Bethany

Snowden, Laura	Mattoon
Sparks, Edna Blanche	Charleston
Stiver, Chlora Beatrice	Vincennes, Ind.
Sullivan, Netti Reid	Charleston
Tarble, Van Austin	Martinsville
Taylor, Emma Corinne	Sullivan
Terry, Clem Vincent	Charleston
Thomas, Gertrude Mary	Granite City
Todd, Fern Esther	Charleston
Toy, Ellen Lillian	Raymond
Tyhurst, Ernie Belle	Martinsville
Vanscoyk, Esther Marie	Kansas
Vermaas, Jeanette Eleanor	Hawthorne
Watson, Verna Lu	Charleston
Weger, Clarence Oeaty	Flat Rock
Williams, Hannah Esther	Mattoon
Willson, Harry William	Charleston
Wright, Florence Kathryn	Charleston
Yanaway, Cecile Marie	Toledo
Young, Mary Hazel	Neoga

ELEVENTH YEAR CLASS

Abel, Carrie Frances	Rochester
Babbs, Vera Avas	Janesville
Baker, Leonard Glenn	Charleston
Bigler, Walter Glen	Sigel
Bowers, William Webster	Charleston
Brown, Henrietta	Charleston
Bryant, Mabel Alice	Charleston
Carrell, Olga May	Charleston
Cone, William Wheatley	Charleston
Cook, Leslie Clarke	Charleston
Craven, Mary Hazel	Oakland
Crowe, Mary	Charleston
Driscoll, Mary Elizabeth	Charleston
DuBois, Sydney Virginia	Southampton, Penn.
File, Ina Dorleen	Irving
Foreman, Harriette Lucile	Charleston
Froebe, Milton Edwin	San Jose
Geffs, Ida	Oblong
Giffin, Russell Lowell	Charleston
Gillespie, Ruth Elizabeth	Humboldt
Gordon, Edna Frances	Findlay
Gordon, Eugene Cassius	Charleston

Gough, Helen Mary	Morrisonville
Gray, Howard William	Lerna
Gray, Lucy	Lerna
Gray, Mildred	Lerna
Grissom, Estella Harriet Jane.....	Toledo
Groniger, Harlan Jerome	Mattoon
Haddock, Lilian Ruth	Charleston
Hall, Paul Stephen.....	Charleston
Hampton, Charles Roscoe	Charleston
Hilsabeck, Hugh Rudolph.....	Windsor
Hood, Edward Earl	Arcola
Houser, William Edwin	Olney
Hubbard, Harlow	Jewett
Huber, Iva Clara	Charleston
Jenkins, Lawrence Estol	Sullivan
Kerr, Margaret Alice.....	Charleston
King, Irene Edith	Greenup
King, Ruth	Charleston
Lawton, Stella Ruth	Paris
Linder, Nellie Russell	Alton
Mahaney, Nellie Susan.....	Winterrowd
McGill, Margaret Marie.....	Paris
McKenzie, Hubert Sherman	Charleston
Miller, Mary Hazel Larrance	Indianola
Moats, Homer Madison	Louisville
Norton, Francis Berne	Flat Rock
Phillips, Josephine Pauline	Sullivan
Porter, Hazel Frances.....	Broadlands
Prather, Charles Lee	Charleston
Prather, Eva	Charleston
Ritter, Lyman	Mt. Carmel
Ryder, Bernice	Charleston
Scovil, Homer Sydney	Cowden
Sibert, Jessie Frances	Charleston
Sims, Nellie Ferne	Irving
Sinsabaugh, Georgia Ann.....	Charleston
Snowden, Esther	Mattoon
Stanberry, Malora Mae	Charleston
Turner, Stephen Gilpin.....	Charleston
Wattles, Jenness	Bible Grove
Whitefort, Lysbeth Augusta	St. Elmo
Winship, Mabel Leona	Charleston
Wiseheart, Mary Harriett.....	Shawneetown
Young, Mary Faye	Gays

TENTH YEAR CLASS

Adams, Ralph Roy	Charleston
Allen, Charles Moore	Charleston
Allison, Helen Mary	Charleston
Anderson, Grace Pearl	Jewett
Armstrong, Elba Milo	Loxa
Baker, Dora Lucy	Windsor
Bancherel, Clara Lelia	Vandalia
Bell, James Carroll	Seymour
Blackford, Robert Rea	Charleston
Bone, Harris Lee	Bethany
Brown, Daphne A.	Ashmore
Byers, Josephine	Charleston
Cannoy, Bessie Marie	Hindsboro
Capen, William Lincoln	Mattoon
Carman, Gage Griffin	Charleston
Cone, Mary Elizabeth	Charleston
Connell, Mary Olive	Lerna
Connelly, Merle Valentine	Westfield
Conrad, Emma Dorothy Christina	Charleston
Cook, Raymond Mack	Charleston
Cox, Mary	Charleston
Coyle, Dale Dudley	Ashmore
Craft, Estella	Charleston
Craig, Irma Frances	Bushton
Crowe, Edith	Charleston
Dailey, May Fern	Charleston
Davis, Lois Ellen	Rardin
Delana, Reta Marie	Bruce
Devericks, Lourene	Charleston
Diemer, Alma Elizabeth	Charleston
Dillman, Genevart Lenore	Yale
Dillman, Lillian Eloise	Yale
Driscoll, Margaret Agnes	Charleston
Edgington, Austin	Flat Rock
Edman, Martha Virginia	Charleston
Ellington, Josie Marie	Charleston
Elliott, Clarence Lee	Mattoon
Etheridge, James Harlan	Charleston
Fagan, Margaret Jane	Robinson
Fender, Joseph Cephas	Westfield
Field, Nellie	Charleston
Fisher, Myrtle Irene	Beason

Froebe, Lula Viola	San Jose
Garner, Mary Opal	Westfield
Gilman, Nettie Florence	Mattoon
Goble, Lurah Louise	Westfield
Goodman, Carl	Charleston
Gray, Horace Montgomery	Lerna
Hadden, Laura Isabel	Blue Mound
Hall, Ross Cyril	Rose Hill
Handley, Josephine Elsie	Humboldt
Handley, Lois Janette	Brocton
Hanley, Flora Deaine	Charleston
Harwood, Elsie	Charleston
Heddins, Ruth	Charleston
Hibschman, Lena Pearl	Dudley
Higgins, Byron Williams.....	Dieterich
Highsmith, Julia Annis	Flat Rock
Hill, Martha Edith	Charleston
Hunt, Marie Leona	Sullivan
Ingram, Madge Loraine	Charleston
James, Ila Marie	Hunt
Jones, Hazel	Charleston
Jones, Mildred Derelle	Loxa
Jones, Neva Leone	Charleston
Kelly, Ruby Julia.....	Charleston
Kelly, Forrest Holly	Greenup
Kincaid, Georgia June	Ashmore
Lackey, Dorothy Elizabeth	Robinson
Lashbrook, Abbie May	Charleston
Leeds, Ruth	Mt. Carmel
Longnecker, Lenola Evelyn.....	Charleston
Longnecker, Minola Evangeline	Charleston
Love, Mildred Ellen	Charleston
Markle, Byron	Hume
McCabe, Merrell Linn	Charleston
McCallister, Fern	Arcola
McCarthy, Margaret Josephine.....	Charleston
McGahey, Emmet Leon	Rardin
Milburn, Helen Jane	Charleston
Mitchel, Byron Florice	Ingraham
Muns, Mary Elizabeth	Pesotum
Nation, Alva Wesley	Charleston
Nation, Daisy May	Charleston
Neal, Roe A.	Greenup
Nehrling, Lucile Elizabeth	Charleston

Olmsted, Beth	Charleston
O'Rourke, Maymie	Marshall
Perisho, Nellie Ann	Dudley
Pierce, Cleta May	Charleston
Pounds, Mae	Carlyle
Rennels, Coryl	Charleston
Rhoads, Lucile	Dieterich
Richardson, Ethel Jane	Arthur
Rife, John Winnie	Chauncey
Root, Merle Ellington	Charleston
Row, Nellie Jane.....	Windsor
Schatz, Lucile Wilhelmenia.....	Mattoon
Serviss, Trevor Knott	Charleston
Sexson, Dale Miller	Charleston
Sharp, Vonnie Madeline	Mattoon
Shoot, Tilford Taylor.....	Charleston
Shrader, Mary	Humboldt
Shuey, Audrey Mary	Charleston
Smith, Gladys Aileen	Buffalo
Smith, Mary Ganelle	Robinson
Smysor, John Leland	Windsor
Spengel, Frieda Hermin	Highland
Springer, Florence Emily	Charleston
Stanberry, Roscoe Dewey	Charleston
Summers, Clarence Bertram	Charleston
Tearney, Anna Elizabeth	Charleston
Tearney, Inez Mazie	Charleston
Tippett, Winnie Marie	Toledo
Tremble, Joseph Ronald	Charleston
Walker, Irene	Charleston
Weaver, Holla Edwin	La Clede
Weaver, Ralph Akester	Edgewood
Whitesel, Harry Alfred.....	Charleston
Whitesel, Ritta	Charleston
Wilkinson, Julia Faith.....	Charleston
Wilson, Floyd Emerson.....	Charleston

.NINTH YEAR CLASS

Abel, Mary Etta	Rochester
Acord, Gladys Marie	Westfield
Allen, Robert Joseph	Charleston
Bails, Clifford Adair	Charleston
Baker, Clarence Vernon.....	Charleston
Baker, Fred	Windsor

Baker, Harriett Winona	Mattoon
Baker, William Kinney	Windsor
Baldwin, Eunice Emma	Mulberry Grove
Bell, Margaret Eleanore.....	Seymour
Bennett, Anna Ethel	Charleston
Bennett, Lela	Martinsville
Bennett, Ocie Grace	Martinsville
Bennett, Ralph	Kansas
Berry, Marion Josephine	Charleston
Best, Eva Adeline	Lerna
Birdzell, Mamie Pearl.....	Neoga
Blankenbeker, Leo Jeffie.....	Advance
Bline, Mattie Leona	Yale
Blunk, Mary Elizabeth	Ingraham
Bouillon, Clara Irene.....	Pocahontas
Brimberry, Ralph Foster	Charleston
Brown, Clarence Dale	Loxa
Brown, Mary Elizabeth	Charleston
Brown, Ruth Dora	Charleston
Campbell, Faye	Mattoon
Carman, Max Griffin	Charleston
Chapman, Arthur Glenn	Martinsville
Chapman, Flora Anita	Sullivan
Checkley, Doris Viola	Humboldt
Chisler, Kittie Everal	Ashmore
Claypool, Silas	Marshall
Craig, Byron Hudson	Fairgrange
Crays, Mary Florence	Windsor
Crispin, Susan Olive	Rardin
Daily, Bessie Ethel	Humboldt
Daily, Gladys Marie	Mattoon
Dallas, Lulu Estella.....	Charleston
Davis, Henry Clay	Coles
Dearnbarger, Christina Nellie	Charleston
Dehl, Roy Osby	Martinsville
Delana, Oleta Blanche.....	Bruce
Deverick, Tabitha Alma	Charleston
Dillier, Walter Earl	Casey
Downer, Mary Louise	Charleston
Driscoll, Rose Catherine	Charleston
Driskell, Grace Taylor.....	Stephensport, Ky.
Espenscheid, Letha Edith.....	Charleston
Eversole, Miriam Grace	Hindsboro
Faulkner, Mona Naomi	Charleston

Fawley, Paul Richard	Charleston
Ferguson, Fred Grant	Etna
Field, Elizabeth	Westfield
Ford, James Thomas	Syracuse, N. Y.
Galbreath, Blanche Beatrice.....	Charleston
Galbreath, Clifford Allen	Ashmore
Galbreath, James Wilson	Ashmore
Galbreath, Sarah Agnes.....	Charleston
Garrison, Lucy Marie	Epworth
Giffin, Veva Mary	Charleston
Gilbert, Ruth	Paris
Goble, Claude Allan	Westfield
Gray, Florence Irene	Mattoon
Hampton, Ida Marguerite	Charleston
Harvey, Esther	Rardin
Harwood, Winfield	Janesville
Hays, Clara Edith	Hidalgo
Hays, Sarah Edna	Hidalgo
Herron, Olivia Blanche.....	Shelbyville
Hildreth, Grace Irene	Mattoon
Hill, Frieldon	Charleston
Hinton, Gladys Gertrude	Rosemond
Houchin, Emma Lee	Arcola
Hutson, Elcie Juel	Charleston
Jenkins, Edith	Charleston
Jenkins, Oral Guynith	Casey
Johnson, Clara Marie	Charleston
Jones, John Paul	Charleston
Jordan, Dios Elmo.....	Rinard
Kane, Mabel Gertrude.....	Humboldt
Kibler, Sarah Gladys	Gays
Kingery, Eva Gertrude	Sigel
Lamb, Ethel Hoxsey	Alhambra
Landrus, Olive Irene	Neoga
Lane, Marie Beatrice	Ashmore
Lane, Rowena	Ashmore
Lashbrook, Leah Lucile	Charleston
Law, Lota Mae	Owaneco
List, Floyd Milton	Charleston
Litherland, Birdie	Mt. Carmel
Long, Clyde Judge	Charleston
Lowry, Calvin Asbell	Arcola
Manhartz, Margaret Genevieve.....	West Union
Mattingly, Mary Loretta	Newton

May, Truman Ward	Charleston
McCord, Chester J.	Oblong
McGrath, Estella Viola	Tuscola
McGuinn, Esta Gertrude	Charleston
McGurty, John Edward	Charleston
McMahan, Mary Mae	Sidney
McMorris, Paul Vernon	Charleston
McVay, Julia Faye	Shelbyville
Miles, Mary Barbara	Charleston
Monical, Erma Lucile	Charleston
Moore, Blanche Rebekah.....	Humboldt
Moore, Denta Ione	Humboldt
Moore, Leone Beatrice.....	Humboldt
Moore, William Mack	Humboldt
Morgan, Mamie	Windsor
Morgan, Sadie Belle	Windsor
Morris, Roy Wilkin	Oblong
Post, Genevieve	Trilla
Post, Jessie Flora	Trilla
Rawland, Frances Leota	Charleston
Reavis, Ruth Eleanora	Smithboro
Rennels, John Harold	Charleston
Rennels, Retha Chlorene	Charleston
Reynolds, Joseph William	Charleston
Rogers, Ruth Violet	Charleston
Rominger, Alma Lorene	Sullivan
Schwarm, Forrest Everette.....	Loogootee
Scott, Elmer	Charleston
Shafer, Doris Mabel	Charleston
Shearer, Pauline Grace	Mt. Carmel
Shepherd, Olivia Calwell	Hoopeston
Shoot, Charlotte Lorraine	Charleston
Shoots, Hazel Marie	Jewett
Smith, Beulah Naomi.....	Allendale
Sparks, George Lloyd	Rosemond
Spaugh, Bitha	Martinsville
Spies, Opal Leota	Greenup
Staley, Ora Aaron.....	Vermilion
Stanberry, Eula	Janesville
Stapleton, Cecelia Genevieve	Taylorville
Stewart, Harold Kile	Charleston
Stokes, Joel Rexwell	Vandalia
Story, Lorraine Edith	Charleston
Strutner, Leo Alexander	West Liberty

Summers, Opal Shelbyville
 Talbott, Carlos Alvin Charleston
 Thompson, Aleen Crews Vincennes, Ind.
 Troughton, Pearl Grace Casey
 Turner, William McKinley Martinsville
 Tyler, Geneva May Keenes
 Upton, Maude Maria..... Lerna
 Walden, Florence Eleanor Parkersburg
 Western, Gertrude Elizabeth..... Charleston
 Whitesel, Esther Grace Charleston
 Wickham, Lula Estella Charleston
 Wilkinson, Louise Fern Charleston
 Williamson, Martha Vallie Staunton
 Willingham, Mabel Helen..... Arcola
 Wilson, George Worth Etna
 Wilson, Paul Hugo Charleston
 Witters, Elmer Oran Charleston
 Woodard, Grace Byron Jewett
 Woodyard, Daisy Irene Charleston
 Wright, Nellie Louise Charleston
 Young, Blanche Edith Gays
 Young, Josiah Bryan..... Kansas
 Zuber, Mary Madaglène..... West Liberty

SUMMER TERM, 1915

Abell, Eva Beatrice Bridgeport
 Adams, Fern Anne Lawrenceville
 Allen, Carrie Alice Assumption
 Allen, Peter Albert Assumption
 Allen, Rachel Willie..... Kingsland, Ark.
 Ames, Grace Gertrude Robinson
 Ameter, Carrie Launer Charleston
 Ameter, June Carolyn..... Charleston
 Andersen, Mabel Iris..... Danville
 Anderson, Agnes Nancy Taylorville
 Anderson, Alice Dora Mattoon
 Anderson, Carl Venter Ogden
 Anderson, Hazel Rowena Kathleen Pana
 Anderson, Helen Beatrice Mt. Pulaski
 Anderson, Inda Myrtle Albion
 Anderson, Julian Piper..... Charleston
 Anderson, Mary Josephine Ramsey
 Andres, Ida Mae Arcola

Andrews, Louise	Hoopeston
Anspach, Cleveland Stevenson	Willow Hill
Arnold, Ione	Charleston
Arter, Elizabeth Isabelle	Danville
Arterburn, Nora Redmon	Kansas
Ashbrook, Anna Lois	Charleston
Aten, Elsie Blanche	Duncanville
Aulenbrock, Anna Marie	Effingham
Bail, Lulu Anna	St. Elmo
Bails, Clifford Adair	Charleston
Baird, Bertha Olive	Cowden
Baird, Mabel Maude	Sumner
Baker, Herschel Fredrick	Atwood
Baker, Laurene Jeanette	Coffeen
Balch, Nellie Allison	Lerna
Bangert, Mae Florence	Taylorville
Banks, Essie Mae	Findlay
Banning, Henry A.	Cowden
Barger, Joseph Louis	Toledo
Barkley, Dora Ellen	Oliver
Barnes, Anna Margaret	Champaign
Barnwell, Myrtle Ivy	Litchfield
Barr, Carrie Crawford	Charleston
Barr, Clella Opal	Georgetown
Barrick, Nelle Pearl	Ridge Farm
Barricklow, Mary Helen	Arcola
Bartholomew, Lola May	Vermilion
Bartlett, Flossie Roena	West Union
Bartlett, Frances	West Union
Barton, Maude Ernestine	Cowden
Batemon, Mae Leona	Tamalco
Baxter, Grace	Martinsville
Beasley, Lennie Mae	Ashmore
Beatty, Charles Lloyd	Paris
Beckmann, Mabelle Rose	Mt. Olive
Behner, Carrie Etta	Marshall
Bell, Mary Etta	Paris
Bell, Rebekah Marie	Decatur
Bennett, Anna Ethel	Charleston
Bennett, Etta Laura	Barnett
Bennett, Gladys Helen	Danville
Bensley, Opal Edna	Charleston
Berkel, Hilda Ida	Staunton
Berry, Burnice	Mt. Zion

Berry, Josephine	Mt. Zion
Berry, Marion Josephine	Charleston
Best, Irene Elizabeth	Tolono
Biedermann, John Henry	Potomac
Biedermann, Mary Lillian	Potomac
Bilyeu, Grace Susan	Smithboro
Bilyeu, Katherine Mary	New Douglas
Bilyeu, Tobias Olive	New Douglas
Birch, Mabel Claire	Martinsville
Bishop, Clara Ethlyn	Woodberry
Black, Dorothy Elizabeth	Paris
Black, Elsa Frances	Charleston
Black, Sara Isabelle	Charleston
Blackford, Robert Rea	Charleston
Blankenbaker, Zeta Fisher	Charleston
Blockburger, Evelyn Priscilla	Hillsboro
Blood, Esther Sarah	Kansas
Boaz, Mary Frances	Charleston
Boley, Mattie Robenia	Olney
Bolt, Jennings	Ramsey
Bolton, Mary Nell	Paris
Boots, Essie Louisa	Greenup
Borders, Blanche	Rossville
Bote, Rachel Mae	Witt
Botts, Irene Lillian	Mattoon
Bouillion, Lula Kate	Pocahontas
Bowen, Effie Norine	Georgetown
Bowman, Lena Pearl	Annapolis
Boyer, Clinton	Newman
Boyle, Marie Agatha	Stonington
Boyle, Marie Cecelia	Sadorus
Bracken, Vianna Grace	Sullivan
Braden, Edna V.	Dudley
Bradshaw, John Chauncy	Grayville
Breach, Grace Louise	Danville
Brengle, Mary Olive	Paris
Breunle, Alma Charlotte	Arcola
Brewer, Bertha Edythe	Greenup
Brewer, Maude Estelle	Danville
Bridges, Maude Edith	Arcola
Brosman, Ethel Agnes	Martinsville
Brothers, Lester French	Sumner
Brown, Dorothy Mattie	Grenada, Miss.
Brown, Eos Olaf	Paris

Brown, Laura Ethel	Carmi
Brown, Maggie Catherine	Charleston
Bryant, Ruth Delight	Herrick
Buchanan, Helen Hunter	Neoga
Buchanan, Marie Nellie	Neoga
Buchholz, Esther Rosella.....	Altamont
Burgess, Lula Pearl	Kemp
Burke, Irene Mathilda	Stonington
Burke, Lois William	Tuscola
Burns, Mary Edna	Salem
Burns, Ruby Pauline	Sullivan
Burrell, Marguerite Elizabeth.....	Flora
Burt, Mamie Elizabeth	Mattoon
Burtner, Edna Mae	Newman
Burton, Nellie Alice	Oakwood
Burton, William Harden	Louisville
Busard, Ira Hanby	Palestine
Butler, Hettie Anne	Grayville
Butler, James Grove	Charleston
Buzzard, Fay	Sumner
Cadle, Chester Junius.....	Charleston
Call, Roma Ethel	Atwood
Campbell, Daisy Jeanette	Paris
Campbell, Elma B.	Newman
Cannoy, Bessie Marie	Hindsboro
Canter, Amy Howard	Metcalf
Carlock, Cora	Atlanta
Carnes, Cecil Raymond	Mattoon
Carr, Jane Barbara	Troy
Carr, Susana Grace.....	Troy
Carson, Elma Mae	New Douglas
Carson, Mary Eunice	Greenup
Carveth, Lillie Elsie	Assumption
Carwell, Virginia	Lerna
Cary, Katherine Lee	Greenville
Cassady, Minnie Ellen	Paris
Cauldwell, Harold Wilford.....	Chrisman
Cawley, Forest Lillie	Dundas
Caywood, Ruby	Oblong
Chalfant, Wilbur	Oblong
Chandler, Rose Mae	Patoka
Chesnut, Gertrude Pearl	Collison
Chronic, George Earl	Humboldt
Church, Maude Della	Stewardson

Clabaugh, Irene	Gays
Clark, Asa Rex	Yale
Clark, Helen Beatrice.....	Rardin
Closson, Albert Morton	Greenup
Clubb, Esther Leola	Paris
Coady, Elizabeth Rose	Taylorville
Coen, Philip Raymond.....	Neoga
Collom, Doris Ella	Humrick
Colson, Etta May	Urbana
Cone, William Wheatley	Charleston
Conley, Mae	Sheldon
Connelly, Merle Valentine	Westfield
Conrad, Charles William	Charleston
Conrad, Rhoda Mlle	Charleston
Cook, Gordon August	Charleston
Cook, Raymond Mack	Charleston
Cooley, Pearl	Farina
Coombs, Leoti Frances	Danville
Cooper, Herman Lloyd	Martinsville
Cottingham, Mary Pauline	Charleston
Courter, William Lester	Allendale
Cox, Ethel	Shobonier
Craig, Edith Irene	Martinsville
Crawford, Mary Lela	Grayville
Cressey, Lucretia	Mattoon
Cressler, Martha Marie	Decatur
Crispin, Jessie Inez	Rardin
Crome, Zola Mae	Albion
Crouch, Nellie	Shumway
Crowdson, Ora Ethel	Sullivan
Crowe, Stanley Maxwell	Charleston
Crowley, Bertha Mary	Newton
Crutchley, Bertha Jane	Smithboro
Crutchley, Laura Frances	Mulberry Grove
Cuppy, Flo	Arcola
Current, Lucille	Danville
Curry, Mary Naomi	Walshville
Curtis, Mabel Faye	Gays
Cuykendall, Addie Irene	Toledo
Daigh, Lee Ethel	Breckenridge
Dare, Bernace Marie	Chesterville
David, Susie Beatrice	Paris
Davidson, Anna Geneva	Neoga
Davis, Bethel Mae	Lis

Davis, Dorothy Hotchkiss	Robinson
Davis, Hazel Oka	Shelbyville
Davis, Ida Beatrice	Bethany
Davis, Pearl	Indianola
Davis, Ruth Gossett	Charleston
DeVillers, Ella Ruth	Patoka
Dial, Florence Edna	St. Elmo
Dickinson, Beulah E.	Flat Rock
Dickson, Ella Mae	Dudley
Diggs, Mary Eva	Muncie
Dillon, Anna Laura	Trenton
Dills, Esther May	Decatur
Dixon, Pearl Claud	Scottland
Dobbs, Thomas Wiley	Herrick
Dodd, Marguerite Benita	Girard
Dodd, Mary Alletta	Girard
Dodds, Arthur Mack	Casey
Dodds, Porter Berry	Casey
Donaldson, Lillis	Potomac
Doolen, Dorothy Isabelle	Kimmudly
Dooley, Margaret Elizabeth	Mattoon
Doty, Ruth Clear	West Salem
Douglas, Mary Ellen	Mt. Carmel
Downs, Erminie	Danville
Drake, Rachel Ellen	Gays
Draper, Ethel Leora	Irving
Du Commun, Lena Maybelle	Oblong
Dugas, Frank Emil	Westville
Duncan, Bess Marie	Potomac
Dunn, Alvera	Donnellson
Dunscomb, Joseph Harmon	Windsor
Durbin, Harriet Lavina	Brownstown
Durbin, Reta Gail	Altamont
Dush, Ray E.	Cowden
Dwyer, Mary Agnes	Charleston
Eagan, Anna Isabel	Alma
Eagler, Ada Mae	Oliver
Eagler, Benjamin Harrison	Oliver
Ealey, Burdelle	Urbana
Earnest, Zola Winifred	Newton
Eckhoff, Amelia Caroline	Raymond
Edman, Martha Virginia	Charleston
Edwards, Anna Tasa	Tuscola
Edwards, Minnie Alice	Donnellson

Elam, Cecile Dorothy	Martinsville
Elam, Orville Amus	Mulberry Grove
Ellis, Effie May	Mattoon
Ellrich, Madeline Florence	Taylorville
Elmore, Daisy Davis	Vandalia
Elston, Lottie Opal	Marshall
English, Susie	Windsor
Espy, Carrie Aleta	Palestine
Etheridge, James Harlan	Charleston
Etter, Ella Mae	Pana
Evans, Olga Elzora	West York
Ewing, Maye Pearl	Neoga
Ewing, Walter Everett	Burnt Prairie
Fancher, Eva	Neoga
Fanson, Frances Arthemeise	Danville
Farris, Ruby Martha	Ashmore
Faught, Joyce	Robinson
Ferris, Lulu Delle	Urbana
Feuerbacher, Emma Regina	Lincoln
Field, Nellie	Charleston
Fields, Julia Veronica	Mattoon
Fields, Loretto Cathleen	Mattoon
Fields, Pearl Mary	Milford
Fisher, Mary Alta	Fairmount
Fitch, Ralph Dean	Charleston
Fitch, Thelma Grace	Charleston
Fitzgerald, Carnelia Esther	Hoopeston
Fletcher, Bertha Florence	Dalton City
Fletcher, Eva Athey	Martinsville
Fletcher, Ruth Edith	Sorento
Flick, Cora	Mt. Carmel
Flickner, Berchie Mabel	Paris
Fortney, Bonnie Pearl	Casey
Foster, Thelma Mae	Arcola
Frantz, Gertie Mae	Oakland
Fread, Hazel Etha	Lovington
Fread, Lydia Maysel	Lovington
Frederick, Elizabeth Sophia	Rankin
Freeman, Hattie Helena	Danville
Fries, Clara Louise	Bunker Hill
Fritz, Beulah Elizabeth	Strasburg
Fritz, Fannie Marguerite	Oblong
Frye, Nadine Virginia	Cowden
Funk, Mary Agness	Ludlow

Funkhouser, Fern Susanna	Mattoon
Furrow, Minerva	Rochester
Gabel, Victor Earl	Greenup
Galbreath, Sarah Agnes	Charleston
Galeener, Anna Pearl	Paris
Gammel, Madaline Elizabeth	Danville
Garrett, Ferne Traxler	Hammond
Garvin, Jennie Josephine	Paris
Gatchel, Oda Madoline	Collinsville
Geer, Edith Dorothy	Pocahontas
Gehl, Reba Ishler	Mattoon
Geisert, Ruth Inez	Marshall
Genre, Lydia Esther	Patoka
George, Ella Beatrice	Danville
Gibbs, Naomi Grace	Clay City
Gibson, Gussie Belle	Marshall
Gibson, Ruby Opal	Arthur
Gifford, Maurine	Tuscola
Gilbert, Pearl	Charleston
Gillogly, Sarah S.	Newman
Gilman, Mabel Ellen	Mattoon
Glasgow, Madge Anna	Pinckneyville
Glithero, Blanche Independence	Chrisman
Glosser, Stanley Ivan	Charleston
Goble, Ethel Alzenia	Westfield
Goe, Agnes	Eldorado
Goff, Emma Dorothea	Trenton
Golladay, Alma Ann	Ashmore
Golladay, Grace Marie	Ashmore
Goodart, Clarence Emmett	West Salem
Goodman, Alberta Marie	Decatur
Goodwin, Dorsie Maurine	Trilla
Gordon, Bess Irene	Hillsboro
Gordon, Edna Frances	Findlay
Gordon, Homer King	Charleston
Grant, Frances Cecilia	Charleston
Grant, Goldia Edath	Oakland
Gray, Beulah Ethel	Windsor
Green, Edith Myrtle	Newman
Green, Everett Lawrence	Landes
Green, Georgana	Paris
Green, William Henry	Landes
Greene, Lilian	Martinsville
Greene, Mary Ellen	Marshall

Greenfield, Fannie Gretina	Mattoon
Greeson, Carrie Belle	Greenup
Greeson, Emma Alice	Greenup
Greeson, Euris Elwood	Greenup
Greeson, Ralph Waldo	Toledo
Grissom, Ilo D.	Arthur
Gullick, Libbie Marie	Alhambra
Hadden, Clara Ruth	Blue Mound
Hadden, Laura Isabel	Blue Mound
Haddock, Muriel May Genevieve	Charleston
Hagerman, Zepha Estrella	Stewardson
Hainley, Anna Fern	Martinsville
Hall, Hazel	Charleston
Hallows, Edna Irene	National Stock Yards
Hamilton, Avis Gwendolyn	Willow Hill
Hamm, Anna Altona	Scottland
Hampton, Maurice	Charleston
Hancock, Fannie	Windsor
Hancock, Nelle	Windsor
Hanley, Flora Deaine	Charleston
Harding, Lloyd	West Liberty
Harrington, Margaret Agnes	Arcola
Harrington, Nellie Marie	Humboldt
Harrington, Norah Frances	Arcola
Harris, Alberta Mabel	Alhambra
Harris, Frank Charles	Coffeen
Harris, John Edgar	Coffeen
Hartmann, Marie Margaret.....	Decatur
Haskins, Mittie Quinn	Grape Creek
Haub, Nellie Marie	Argenta
Haumesser, Gertrude Rosina	Shumway
Hawkins, Flossie May	Oconee
Hawkins, John Henry	Charleston
Hay, Ida Marian	Grape Creek
Hayward, Sylva Juanita.....	Georgetown
Hazzard, Mary Zua	Ridge Farm
Heacock, Grace	Tuscola
Heath, Minnie Marie	Toledo
Heck, Gladys	Hardinville
Held, Agnes Margaret	Raymond
Held, Stella Marie	Raymond
Henderson, Ben	Georgetown
Henke, Marie Caroline	Collinsville
Henry, Lucy Dell	Bourbon

Henze, Cornelius Frederick August	Alhambra
Herman, Marguerite Cecelia	Raymond
Herren, Bess Rose	Danville
Hess, Lilly Hazel	Collison
Hester, Harriet Beryl	Ridge Farm
Hibschman, Lena Pearl	Dudley
Hickman, Estelle Josephine	St. Louis, Mo.
High, Lennie Leroy	Bement
Highsmith, Evangeline	Flat Rock
Highsmith, Lena Ellen	Flat Rock
Hill, Elsie Magnolia	Oconee
Hill, Glester Howard	Danville
Hines, Margaret Cecelia	Moweaqua
Hines, Mary Rose	Moweaqua
Hitchens, Emma	Danville
Hobbs, Sara Blanche	Paris
Hollard, Ida	Alton
Honnold, Mildred Okal	Paris
Hood, Eura Lee	Lowpoint
Hood, Harold Eustis	Arcola
Hopson, Inez Madge	Taylorville
Howard, Lola Ellen	Arcola
Howard, Nellie Edith	Hindsboro
Hubbard, Charles Leo	Vandalia
Huber, Mary Jane	Arthur
Huber, Ruth Elizabeth	Shelbyville
Huffington, Fred Miller	West Union
Huffman, Jessie Frances	Charleston
Hughes, Jennie Agnes	Litchfield
Hughes, Mary Emily	Hillsboro
Humphrey, Lyla Florence	Stonington
Hunsaker, Gertrude Elma	Danville
Hunter, Faye Gladys	Cowden
Husted, Mary Josephine	Martinsville
Hutchison, Etta Alice	West Union
Hutson, Ethel	Marshall
Jaggers, Mabel Helen	Charleston
James, Emma Lovisa	Hunt
James, Henry Clay	Bogota
James, Ila Marie	Hunt
James, Lillian Missouri	Newton
James, Vessa	Oblong
Jayne, Irene Cecile	Woodstock

Jessop, Corine	Fairfield
Jenkins, Goldie Ruth	Fairmount
Johnson, Clara Marie	Charleston
Johnson, Harry Franklin	Cisne
Johnson, Josephine Evans	Chrisman
Johnson, Mary Elsie	Horace
Johnston, Donald Compton	Charleston
Johnston, Sara	Charleston
Jones, Annie Lee	Mt. Carmel
Jones, Ella	Greenup
Jones, Lida Frances	Newman
Jordan, Vina	Indianola
Kannmacher, Aaron	Martinsville
Kannamacher, Aaron	Martinsville
Kaune, Irene Lois	Donnellson
Keller, Carrie May	Nowata, Okla.
Kelley, Teresa Margaret	Champaign
Kelly, Helena Marie	Paris
Kelly, Katherine	Ashkum
Kelly, Mamie	Charleston
Kelly, Mary Elizabeth	Pittwood
Kelly, Nelle Margaret	Paris
Kenney, Annie Marie	Paris
Kenney, Iva Della	Sullivan
Kenney, Zora Mae	Sullivan
Kenny, Corinne Gertrude	Charleston
Keran, Rhoda Elizabeth	Camargo
Kerns, Martha Almina	Arcola
Kerr, Margaret Alice	Charleston
Kerr, Rhoda Elizabeth	Charleston
Kershaw, Ethel May	Edwardsville
Kershner, Ethel Star	Mulberry Grove
Kibler, Claudia Vere	Newton
Kibler, Virgil C.	Charleston
Killebrew, Cordelia Blanche	Nebo
Killie, Evelyn Hope	Kinmundy
Kimzey, Grace	Pinckneyville
King, Etta Elizabeth	Irving
King, Flora May	Martinsville
King, Garcia Gladys	Paris
King, Myrtle	St. Francisville
Kingery, Erma Josephine	Toledo
Kinney, Ruth Margaret	Danville
Klarman, Dorothy Marie	Shumway

Kneedler, Ruth	Danville
Knight, Edith Pearl	Charleston
Knight, Oscie Alma	Salem
Koelmel, Louise Isabelle	Decatur
Koonce, Elsie Frances	Mulberry Grove
Krouse, Charles Henry	Hazel Dell
Kuykendall, Annie	Sorento
Kyner, Mayme	Moweaqua
Lafferty, Charlotte	Martinsville
Lang, Fannie Gertrude	Charleston
Largent, Electa Mabel	Strasburg
Laub, Emma Katherine	Gilman
Lauher, Lillie May	Charleston
Lawrence, Neva Gail	Grayville
Leach, Edgar Shelby	Mt. Carmel
Leach, Harvey Dean	Charleston
Leach, Opal M.	Hume
Leslie, Estella Annabelle	West Salem
Leturno, John Alexander	Wheeler
Levitt, Zella Augusta	Wheeler
Libke, Andrew Emanuel	West Salem
Linder, Mary Davis	Hume
Linder, Ruth	Alton
Lindhorst, Grace	Glen Carbon
Lindsay, Lily Myrtle	Flat Rock
Litherland, Lenora May	Allendale
Littlejohn, Roy	Hardinville
Livengood, Elizabeth Fern	Raymond
Livengood, Anna Margaret	Stonington
Lockart, Flora Vance	Cowden
Logan, Byrdella Alethea	Oakland
Long, Cecile Marie	Deland
Lough, Anna Marie	Indianola
Louthan, Edith Lucille	Arcola
Love, Mildred Ellen	Charleston
Lozier, John Sylvanus	Arcola
Lumpkin, Richard Adamson	Mattoon
Lumsden, Ruth Marion	Champaign
Lupton, Marie Helen	Taylorville
Lutz, Lois Pearl	Charleston
Lyons, LaVearl Veron	Charleston
Machler, Frances Helen Anne	Litchfield
Maddox, Gretchen Amelia	Flat Rock
Mahaney, Nellie Susan	Winterrowd

Malone, Edith	Olney
Manhart, Corinna	West Union
Manhart, Eva	West Union
Manhart, Margaret Genevieve	West Union
Manley, Elizabeth Esther	Paris
Mansfield, Mary Rose	Mattoon
Maple, Nellie Frances	Paris
Markel, Pearl Viola	Hillsboro
Markle, Byron	Hume
Marsh, Elsie	Ogden
Marshall, Olive	Chicago
Martin, Clara Florence	Nebo
Martin, Cora Edith	Nebo
Martin, Florence Lindsey	Palestine
Martin, Lulu	Palestine
Martin, Ray Ford	Charleston
Martyn, Irna Lorraine	Charleston
Marvel, Edward A.	Windsor
Mason, Lena Marie	Charleston
Massing, Alice Barbara	Danville
Massing, Elsie Marie	Danville
Maxey, Orval Leonard	Oblong
Maxwell, Gertrude Olive	Flat Rock
McAllister, Margaret Ingobee	Windsor
McCabe, Lucy Olive	Mode
McCallister, Ersie Opal	Arcola
McCann, Mable Mildred	Gilman
McCarty, Palmer Goldoni	Robinson
McClay, Vera Mitchell	Summer
McClure, Alice Elizabeth	Chrisman
McCollom, James Arthur	East St. Louis
McCord, Viola Margaret	Bethany
McCullough, Katherine	Atlanta
McCusker, Ruth	Mattoon
McDougle, Ella Moore	Humboldt
McEvoy, Bertha Olive	Hume
McGill, Margaret Marie	Paris
McKean, Mary Evelyn	Mulberry Grove
McKenzie, Fannie Beatrice	Charleston
McKeown, Maggie	Lawrenceville
McKibben, Elma Pearl	Arcola
McKinley, Lura	Newton
McLaren, Pearl Anna	Greenville
McMillen, Pearl Maude	Cowden

McNeal, Ruth	Hoopeston
McNeill, Gladys Champion.....	Mahomet
McNutt, Elizabeth Foulkrod	Springfield
McVay, Ada Florence	Shelbyville
Meacham, Grethel Flora	Crossville
Means, Esther Helen	Paris
Medcalf, Ross John.....	Bogota
Meinkoth, Carrie Grace	Trenton
Menzi, Hermina Katherine	Trenton
Merritt, Mary Henrietta	Charleston
Merritt, Nora Ethel	Taylorville
Meyer, Alfred Fred	Worden
Middlesworth, Vesta	Cowden
Middleton, Christopher Wardle	Charleston
Miles, Delsie Rebecca	Pana
Milholland, Nora Overholser	Charleston
Miller, Mary Hazel Larrance	Indianola
Miller, Josie Claribel	Loogootee
Miller, Raymond	Indianola
Miller, Vida Vaughn	Fillmore
Miller, Walter Fauver	Paris
Minor, Mildred Marie	Oakland
Mitchell, Edna Pearl	Hoopeston
Mitchell, Ensign Franklin	Raymond
Mohn, Julia Augusta	Lincoln
Mollett, Martha Alice	Pocahontas
Montgomery, Walter Abener	Birds
Moore, Della May	Ashmore
Moore, Halene Florence	Ashmore
Morgan, Lila Elizabeth	Greenville
Morris, Blanche	Neoga
Morrison, Ethel May	Georgetown
Mosier, Flora Belle	Indianola
Mosier, Lola Jaunita	Indianola
Muchow, Minnie Ethel	Shumway
Mulvane, Lawrence	Robinson
Mumme, Emma	Litchfield
Murphy, Edith Amelia	Westfield
Murray, Elmer Harold	Sullivan
Mussett, Ralph Shelton	Grayville
Myers, Anna Edyth	Greenup
Myers, Lona Alice	Olney
Nail, Stella Belle	Morrisonville
Nave, Eva Blanche.....	Annapolis.

Neal, Don	Janesville
Neer, Minnie Elizabeth	Sidney
Nelson, Edith Mae	Palestine
Newlin, Olive Blanche	Charleston
Nichols, Raymond Wallis	Greenup
Norris, Rena Lovina	Hoopeston
North, Esther Leota	Danville
Nunn, Clarissa Marietta	Lawrenceville
O'Day, Nelle	Trilla
Ogdon, Sarah Alice	Danville
Olmsted, Beth	Charleston
O'Neill, Anna Maebelle	Newton
Orlea, Helen	South Danville
O'Rourk, Elizabeth	Marshall
O'Rourk, Maymie	Marshall
Orr, Eleanor K.	Mt. Carmel
Ostheimer, Josephine Theresa	Sainte Marie
Oswald, Dora Elizabeth	Pocahontas
Padrick, Ola Mae	Toledo
Palmer, Gertrude Margaret	Homer
Park, Dora	Parkersburg
Park, Retta Aline	Moweaqua
Parker, Luella Dolores	Flat Rock
Parker, Mamie Edith	Newton
Patchett, Opal	Martinsville
Patterson, Jane Cloyd	Catlin
Patterson, Lillie May	Oakwood
Patton, Fred William	Montclair, N. J.
Paull, Julia Ann	Palestine
Payne, Alma Tobitha	Camargo
Payne, Daisy Pearl	Newton
Pease, Leeta Pearl	Shelbyville
Peebles, Vera Maxine	Coffeen
Perisho, Nellie Ann	Dudley
Peters, Kit Irene	Windsor
Peters, Mary Loretta	Paris
Peters, Pearl Iona	Greenville
Phillips, Andrew Sheldon	Sullivan
Phillips, Margaret Blanche	Dana, Ind.
Phillips, Mary Elizabeth	Mt. Carmel
Phillips, Mary Ethel	Claremont
Phillips, William Henry	Oblong
Phipps, Mary Enola	Newman
Pierce, Ervel C.	Assumption

Pogrotsky, Hattie Ethel.....	East St. Louis
Ponsler, Prudence	Holland
Pope, Gertrude Irma	Odell
Porch, Edna Lucile	Tuscola
Powell, Enola Grace	Sullivan
Powell, Orville Wendell	Sullivan
Prather, Ona Alice	Charleston
Pratt, Frank Raymond	Boulder
Prevo, Harry Musgrave	Hutsonville
Price, Anna Ophelia	Palestine
Prince, Herschel P.	Aledo
Pyle, Edith Marie	Lebanon
Querry, Clara Osborne	Sidell
Rachow, Tipmer	Reno
Ramsey, Tula	Eldorado
Rand, Rayburn John	Cowden
Ransom, Ida Ethelyn	Palestine
Ray, Artrice Elva	Sullivan
Records, Cecilia Grace	Garrett
Reid, Claude Clarence	Albion
Reiss, Marie Elizabeth	Shelbyville
Rennels, Vivian Marie	Charleston
Rhodes, Verle	Lovington
Rhue, Lena Cecilia.....	Champaign
Rice, Estella Mae	Girard
Rice, Florence Frances	Chrisman
Richards, Beryl Edna	Tuscola
Richards, Margaret Pauline	Palestine
Richards, May Florence	Georgetown
Richardson, Mae	Tolono
Ridgely, Joy	Olney
Roberts, Betty Matilda	Herrick
Roberts, Jessie Evelyn	Herrick
Roberts, Leona Anna	Arcola
Robertson, Grace Anne	Kansas
Robinson, Ella Gertrude	Grayville
Rodgers, Mildred Catherine	Mt. Carmel
Rodman, Kathryn Brown	Du Quoin
Roessler, Ruby Clare.....	Shelbyville
Rogers, Alberta Inez	Waverly
Roley, Grace	Strasburg
Roluson, Ethel May	Tuscola
Romack, Mary Ann	Camargo
Rosenberger, Olga Leone	Woodland

Ross, Bessie Ione	Donnellson
Ross, Lela Beatrice	Charleston
Roth, Edith	Hume
Row, Bessie May	Windsor
Row, Nellie Jane	Windsor
Ruddick, Cathryn Almeda	Sandoval
Rush, Orville Boine	Loogootee
Russell, Pearl	Toledo
Russell, Zelma	Toledo
Sager, Frank	Ashmore
Sandberg, Lillian Hercelia	Danville
Sawyer, Luemma Jane	Brownstown
Saxby, Flora Ella	Litchfield
Saxton, Georgia Ellen	Kansas
Schaefer, Jesse Ovid.....	Paris
Schatz, Lucile Wilhelmenia	Mattoon
Schaub, Arthur John	St. Elmo
Scherer, Dora Leona	Mattoon
Schlobohm, Anna Katrina	Findlay
Schnitz, Grace Pauline	Mt. Carmel
Schrodt, Clara Josephine	Mt. Carmel
Scott, Anna Berdella	Edgar
Scott, Edith	Georgetown
Scott, Grace Bell	East St. Louis
Scranton, Laurrell Lacey	Greenup
Sears, Alta Vista	Arthur
Seiber, Mary Pearl	Moweaqua
Seifert, Della Belle	Ellery
Serviss, Trevor Knott	Charleston
Sexson, Portia Winona	Charleston
Sexton, Anna Izetie	Arthur
Sharp, Mildred	Mattoon
Sharp, Serena Elizabeth	Casey
Sharp, Vonnie Madeline	Mattoon
Shea, Frances Katharine.....	Mattoon
Shelby, Faye Connie	West Salem
Sherman, Mora Alice	Sandoval
Sherrick, Elsie	Greenup
Sherwood, Cora Ada	Greenup
Shinn, Hallie Agnes	Pinkstaff
Shores, Mabel Grace	Gays
Shrader, Dora	Humboldt
Shroll, Emma Luvilla	Moweaqua
Shroyer, David Mirven	Urbana

Shuey, Vera Anna	Charleston
Shull, Monnie Amettie	Greenup
Shutt, Wintress	Shelbyville
Sidenstricker, Anna	Newman
Simpson, Gladys	Taylorville
Sims, Lillie La Rue	Irving
Slack, Elsie Lural	Dudley
Slifer, Sylvia Pearl	Bunker Hill
Smart, Bessie Chrystine	Herrick
Smith, Josephine Hellenia	Lovington
Smith, Lulu Inez.....	Greenup
Smith, May	Morrisonville
Smith, Nettie Ethel	Lancaster
Snedeker, Jaunita Ethel	Marshall
Snell, Lulu Mae	Assumption
Snyder, Dorothy Mae	Charleston
Snyder, Helen Mabel	Taylorville
Sparks, Edna Blanche	Charleston
Spelman, Bessie Jane	Arcola
Spencer, Nora Virginia	Homer
Spengel, Frieda Hermin	Highland
Sperry, Ivy Blanche	Greenup
Spitzer, Marietta	Warrensburg
Stalain, Fern	Edgewood
Staley, Ettie Mae	Hume
Stallard, Elsie Erma	Pocahontas
Stallard, Fannie Eula	Pocahontas
Stayton, Edith Maurine	Trilla
Stephens, Raymond Edward	Charleston
Sterling, Ruby	Enfield
Stevenson, Hannah Hubbs	Evansville, Ind.
Stewart, Mabel	Vandalia
Stirewalt, Dorothy Myrtle	Greenup
Stitt, Elizabeth Catherine	Toledo
Stitt, Leora	Toledo
Stockbarger, Elva	Greenup
Stoddard, Myrtle Annis	Windsor
Stone, John Henry	Hume
Stone, Lena	Hume
Story, Savannah	Charleston
Stratton, Geneva	Chrisman
Strong, Glenna Leander	Casey
Stultz, Flossie Delilah	Potomac
Sullivan, Nora Margaret	Stonington

Summers, Opal	Shelbyville
Swain, Bernice Olive	Paris
Swango, Joe	Niantic
Swango, Morton	Niantic
Swinehart, Mamie Alice	Humboldt
Swope, Herman DesMoins	Annapolis
Tate, Ivah Faye	Moweaqua
Taylor, Emma Corinne	Sullivan
Taylor, Loudin Virgil	Cisne
Taylor, Mildred	Donnellson
Teal, Annie Laurie	Atwood
Teel, Wilma Irene	Charleston
Terry, Edna Fern	Charleston
Thomas, Cordia Melvina	Assumption
Thompson, Dena Elizabeth	Paris
Thompson, Jessie Louise	Mattoon
Thompson, Olive	Mattoon
Thomson, Geneva Evelyn	Parkersburg
Thrift, Mabel Benton	Forsythe
Thurston, Ora Delle	East St. Louis
Tiffany, Lewis Hanford	Lawrenceville
Todd, Josephine	Arcola
Tomberlin, Earl	Charleston
Toy, John William	Raymond
Toy, Ruth Edythe	Raymond
Truax, Ethel Lorene	Oakland
Tudor, Yola Ruth	Mattoon
Tupper, Charlotte	Litchfield
Turner, Norma Grace	Hillsboro
Turnley, Mildred Daisy	Collinsville
Twigg, Helen Rose Cecilia	Brocton
Underwood, Ethel	Greenup
Updegraff, Goldie Jane	Charleston
Vanatta, Lora Elizabeth	Newton
Van Camp, Arthur	Charleston
Vance, Ethel Beverly	Paris
Vaughn, Marie Veronica	Woodberry
Vliet, Mabel Grace	Rossville
Wagoner, Susie Edna	Gays
Wagner, Beulah Orpha	Newton
Wagner, Freeda Marie	Watseka
Wagner, Lena Luella	Sumner
Walden, Florence Eleanor	Parkersburg
Waldrop, Ethel Vivian	Greenup

Walker, Martha Pauline	Alma
Walker, Mary Jane	Alma
Walker, Sylva Mary	Broadlands
Walker, William Albert	Gays
Wallage, Mary Louise	Paris
Walling, Chelsie Eliza	Casey
Wallisa, Thurman	Woodberry
Walsh, Frances Sabina	Mattoon
Walsh, Thomas Virgil	Grayville
Walters, Altha Marie	Casey
Walters, James Garland	Oblong
Walters, Thelma Ruth	Mt. Auburn
Waltz, Martha Ellen	Hume
Ward, Alora Thelma	Greenup
Ward, Cleo Frances	Toledo
Washburn, Ruth Irene	Marshall
Waters, Irene Elizabeth	East St. Louis
Watkins, Nora Gertrude	Fithian
Watson, Nellie Cadle	Charleston
Wattles, Beulah	Bible Grove
Weaver, Ralph Akester	Edgewood
Webber, Ralph Ernest	Charleston
Webster, Essie	Nokomis
Weinberg, Emma	Du Quoin
Wells, Henrietta Matilda	Morrisonville
Welman, Edna Agnes	Lovington
Welton, Nora Ellen	Argenta
Werden, Margaret Beatrice	Vandalia
West, Mabel Laura	Loda
West, William John	Odin
Westbrook, Gladys Catherine	Paris
Westbrook, Marybelle	Dana, Ind.
Whalen, Mary Mandaina Frances	Charleston
Wharton, Laura Maud	Edgewood
Wharton, Maize Ella	Atwood
Wheritt, Eva Leoda	Keyesport
Whitacre, Inez Rachel	Janesville
Whitacre, Lois Marian	Lerna
White, Mary Alberta	Irving
White, Mary Caroline	Oakland
Whitehead, Elta Mae	Brownstown
Whitlock, Gladys	Humrick
Wilkins, Erma Rea	Paris
Wilkinson, Edna Emma	Trenton

Wilkinson, Julia Faith	Charleston
Wilkinson, Louise Fern	Charleston
Williams, Iola Anne	Stewardson
Williamson, Agnes Maude	Staunton
Williamson, John Caswell	Atwater
Williamson, Wynter Wayne	Atwater
Willison, Viola	Ridge Farm
Wilson, Emmar Nevada	Westfield
Wilson, Hester LeOna Jean	Irving
Wilson, Kenneth Earl	Hume
Wilson, Lucille Maud	Danville
Wilson, Lula	Paris
Wilson, Sumner Garland	Charleston
Wilson, Viola Edythe	Hindsboro
Winkles, Lela	St. Francisville
Winter, Fannie Emaline.....	Nokomis
Wise, Althea Mary	Newton
Wiseheart, Mary Harriett.....	Shawneetown
Wissel, Bertha Mildred	Charleston
Witters, Clara Etta	Charleston
Wood, Mabel Marie	Paris
Woods, Florence Margaret	Rossville
Woodyard, Daisy Irene	Charleston
Woolery, Anna Marie	Neoga
Wright, Esther Blanche	Mt. Carmel
Wright, Nettie May	Dayton, Ohio
Wright, Velva Elizabeth	Vermilion
Yarnell, Maude	Decatur
Yeley, Rubie Agnes	Marshall
Yerly, Flora Elizabeth.....	Taylorville
York, Horace Martin	Fairland
Young, Alice Maud	Neoga
Young, Lucy	Dudley
Young, Lucy Belle	Robinson
Young, Mary Margaret	Dudley
Young, Orville Edwin	Neoga
Youngman, Morton Reeves	West Liberty
Zimmerly, Susie Evelyn	Paris

PUPILS IN THE ELEMENTARY SCHOOL

EIGHTH GRADE

Class A Promoted to Ninth Year in January

Bell, Margaret Eleanore	Fawley, Paul Richard
Brimberry, Ralph Foster	Hampton, Ida Marguerite
Brown, Mary Elizabeth	Lashbrook, Leah Lucile
Carman, Max Griffin	McCarty, Edna Alice
Carothers, Paul	Miles, Mary Barbara
Deverick, Tabitha Alma	

CLASS A

Allison, Howard Duff	James, Clinton Flocken
Anderson, Irving Gray	Mitchell, Reba Irene
Barnes, Vernon Ewing	Pierce, Dorothy Juanita
Bell, Cyril	Reed, Ralph Andrew
Blankenbeker, Leo Jeffie	Stevens, LeRoy Elbert
Carpenter, Ruth Eugenia	Townsend, Gerald Steven
Densmore, Hildred B. E.	Wilson, Fern Lucile
Espenscheid, G. Elizabeth	Woodburn, Thelma V.
Hampton, Jeanette Marion	

CLASS B

Adair, Mary Ellen	Harris, Ray
Blair, Robert Maxwell	Kerr, Harold Huston
Bowlin, Bessie Mae	Lynch, Lee Arthur
Cox, Clifford Edwin	Nehrling, Dorothy H.
Doty, Mabel Azetta	Prather, Cecil Edward
Galbreath, Alice Pauline	Rawland, Perry
Griffith, Marian Louise	Trimble, Florence Arena
Hall, Marguerite Lucile	Woodburn, Leo Kenneth
Hancock, Lloyd	Worden, Inez Mabel

SEVENTH GRADE

CLASS A

Anderson, Sumner M.	Enyart, William Edward
Bates, John Irie	Kerans, Andrew Josiah

Bell, Leo	Livingston, Rachel Marie
Boyer, Mary Esther	Lynch, Gohring
Briggs, Clara Katherine	Lynch, James Clarence
Buckler, Doris Marie	Shafer, Myrle Harold
Chenoweth, Beulah E.	Stewart, Forest Augustus
Conner, Mildred M.	Weaver, John Arfus
Curl, Cleda Mary	Wilson, Elmer Emerson
Dunaway, Blanche May	

CLASS B

Anderson, Audley McKay	Lynch, Margaret Ellen
Behrens, Marian M.	Marshall, Syble Fern
Buckler, Erma Boneta	Mitchell, Pauline May
Coon, Paul Clarence	Osborne, Hugh
Crowe, John Albert	Pierce, Mildred
Day, Josie	Popham, John R. Sherman
Foltz, Corinne	Rennels, Lois Marian
Harrison, William LeRoy	Shanks, Rocha
Heddins, Helen	Shoemaker, Robert Wells
Iknayan, Alfred Nicholas	Stevens, Leslie Elmer
Kelly, Redyth Katherine	Tremble, Shirley Walter
Love, Marjorie Lucinda	Willingham, Frank Byron

SIXTH GRADE

CLASS A

Bell, Geneva	Rankin, Lyda Clotile
Bisson, Barbara	Reynolds, Harry Allen
Bottrell, Zella	Reynolds, Myra Louise
Brewster, Clara	Springer, Carolyn W.
Brown, Olive Goelet	Sullivan, Nellie Pearl
Carothers, Lorin	Tittle, Beulah Edith
Cherry, Elsie Flavia	Whittemore, Harold H.
Gray, Kathryn Louise	Wiley, Leo
Heistand, Sarah Emily	Williams, Geneva
Nickles, Mabel Neomi	Wilson, Goldie
Prather, Rhoda	

CLASS B

Bagley, Madeline	King, Hugh Gerald
Bailey, Ralph Edwin	Lang, Luther
Bailey, Robert Cornelius	Livingston, Roy Owen
Bond, Mary June	Mitchell, Anne Howard

Brown, Mildred Marie
Cone, Russell Allen
Dunaway, Ruth
Fawley, Ruth Eldora
Feagan, Ruth Rebecca
Followell, Essie Mae
Goble, Denzil Ryan
Hall, Ruel Elden

Park, Sunshine Elizabeth
Schnorf, Amy Jane
Shafer, Helen Lavern
Stevens, Leona May
Sullivan, Andrew Harmon
Walker, Herman Cecil
Woodburn, Lowell Norviel
Wrenn, John Joseph

FIFTH GRADE

CLASS A

Barnes, Jennie Vera
Bisson, Morris LeAnton
Blackford, Harold T.
Brown, Herbert Donald
Coon, Ella Margaret
Craig, Russell L.
Fasig, Lelia Bernice
Faulkner, Charles Huston
Foreman, Maurice Everett
Goodman, Mlle
Grove, John Harold

Hackett, Dorothy Irene
Kelley, Emma Chenault
Lang, Lillie Helen
List, Miriam Cleoyne
Love, Edwin Barnes
Rutan, Harry Franklin
Ryan, Thelma Virginia
Teel, Louise Ethelyn
Toops, Claude Daniel
Wright, Pauline Addelias

CLASS B

Berkley, Marian Frances
Blair, Donald Russian
Blair, Dorothy Myrtle
Buker, Esther Mae
Cox, Dorothy Anna
Dodds, William Wayne
Edman, Sarah Lois
Freeman, Mary Andrews
Hall, Howard Sylvester
Hayes, Rosa Etta
Jordan, Ida Lucile

Kelly, Alice Elizabeth
Livingston, Alfred
Longnecker, David S.
McNear, Ray Trout
Mitchell, Harry Allison
Moulton, Hazel Maree
Osborne, Robert Paul
Redman, Helen Elizabeth
Reynolds, Marie
Swisher, Ralph

FOURTH GRADE

CLASS A

Adair, James Hamilton
Ashby, Roy
Ball, Charles Condon
Bell, Frank Oris

Crowe, Eleanor
Eckenrode, John Kenneth
Foltz, Haldon Verne
Gannaway, John William

Bisson, Mary Charlotte	Hall, Vivian
Brown, Jessie Lee	Popham, Russell Francis
Carothers, Edwin Olen	Shoot, Robert Orville
Cherry, John Albert	Stone, William Prentice
Cooper, Herbert Wayne	Titus, Gordon Russell
Crispin, Carleton L.	Wuersch, Harold William

CLASS B

Bails, Gwindell Andrew	Mitchell, Jean Elizabeth
Bowlin, James Howard	Pigg, William Alvin
Brown, Paul William	Reynolds, Pearl Oriole
Buckler, Wayne Edgar	Shoemaker, John William
Foote, Oscar Ralph	Stevens, Marguerite
Goodman, Paul	Stewart, Elinor Rosabell
Griffiths, Eula	Thomas, Virginia Marion
Gwinn, Gertrude Nadeen	Tittle, Bonnie Mildred
Harper, Ulla Ruth	Walker, Nellie Marie
McNear, Mary Janette	

THIRD GRADE

CLASS A

Ashby, Phillip Hubert	Pippit, Francis Aden
Boate, Herbert Glen	Prather, Ethel May
Dudley, Tilford Eli	Schnorf, Forest Gehl
Hampton, Granville Marion	Shanks, Dorothy
Henderson, Vivian Ina	Skelton, Gerald
Marker, Lucile	Tittle, Mary Aileen
Mock, William Albert	Wright, Irma Flo Belle

CLASS B

Cutsinger, Naomi Lois	Jackson, Ella Mae
Dowling, Emily	Leach, Paul Henry
Dunten, Esther Ina	McAdams, Alvin Berle
Freeman, Nelson Wright	Swinford, Loyal Clayton
Harris, Charles Wendell	Winship, Lela Burnice
Harryman, William Rider	

SECOND GRADE

CLASS A

Ashby, Wayne	Lindon, Elsie
Awty, William John	List, Edna Alberta
Bradley, Ray Kenneth	Lynch, Robert Thomas

Davis, Donald King	Maxwell, Paul Lyle
Grant, Johanna Elizabeth	Miller, Bryon Beneke
Hallowell, Harriet	Shaffer, Kathryn Virginia
Iknayan, Herbert Aram	Toops, Floyd Adly
Jordan, Harry Salman	Trimble, Edgar Theron

CLASS B

Ameter, Lawrence	Nichols, Frances Louise
Ameter, Lorena	Replogle, Forest Dale
Ball, Emma Pauline	Ryan, Carl Taylor
Bryant, Leonard Russell	Sellars, Edna Lillie
Goodman, Neal	Thomas, Julia Isabel
Griffiths, Lamerence	Woodson, Bessie Frances
Livingston, Pauline	Wyeth, Madge Irene
Mitchell, Samuel Poucher	

FIRST GRADE**CLASS A**

Behrens, Ruth Anna	Nickles, Charles
Brown, Edna Molly	Nickles, Helen
Cook, Stanley Snider	Reynolds, Helen A.
Ewing, Harry Alvin	Satterthwaite, L. L.
Hampton, James Albert	Shoot, Kenneth Alvin
Jackson, Clara Lee	Smith, Margaret Nelle
Lindon, Sheldon	Toops, Thelma
Lyon, Doris Ellen	Transeau, Elizabeth H.
Middlesworth, Harold	Wilson, Marguerite Irene
Morgan, Emma Virginia	Wright, Presley Nelson

CLASS B

Bails, Donald George	Hutton, Lawrence
Barker, Lowell	McDougle, Charlotte E.
Briggs, Thelma Edith	Meyer, Dorothy Josephine
Cofer, Alton Burnham	Mitchell, Dorothy Anna M.
Cooper, Lena Marie M.	Smith, Margaret Nelle
Dowling, Etta Jane	Stevens, George Owen
Eastman, Evelyn Frances	Willingham, Russell T.
Foote, Hester Helen	Wood, Raymond Avery
Griffin, Robert Hardy	Woodson, Helen Marie
Gwin, John Oddrons	

SUMMARY

	'06-7	'07-8	'08-9	'09-10	'10-11	'11-12	'12-13	'13-14	'14-15	'15-16
Normal Department	332	397	427	449	484	490	511	504	526	577
Summer School	429	452	504	452	460	584	740	755	710	891
	761	849	931	901	944	1074	1251	1259	1236	1468
Elementary School	260	229	228	222	223	219	225	312	307	310
	1021	1078	1159	1123	1167	1293	1476	1571	1543	1778
Counted Twice	58	50	61	55	57	54	72	69	82	103
Total	963	1028	1098	1068	1110	1239	1404	1502	1461	1675

COUNTIES REPRESENTED

Bond	Gallatin	Morgan
Champaign	Iroquois	Moultrie
Christian	Jasper	Perry
Clark	Jersey	Piatt
Clay	Kane	Pike
Clinton	Lawrence	Richland
Coles	Livingston	St. Clair
Cook	Logan	Saline
Crawford	Macon	Sangamon
Cumberland	Macoupin	Shelby
Douglas	Madison	Vermilion
Edgar	Marion	Wabash
Edwards	McHenry	Wayne
Effingham	Mercer	White
Fayette	Montgomery	Woodford

OTHER STATES REPRESENTED

Arkansas	Missouri	Ohio
Indiana	New Jersey	Oklahoma
Kentucky	New York	Pennsylvania
Mississippi		

STUDENTS WHO HAVE COMPLETED THE FIRST TWO
YEARS OF THE FIVE-YEAR COURSE FOR
TEACHERS IN A COUNTRY SCHOOL.

1915

Beeson, Annalola..... Litchfield

Linder, Nellie Russell Alton
 Norton, Francis Berne Flat Rock
 Spitzer, Marietta Warrensburg

GRADUATES

1900

Beeman, Marion N. Robinson
 Goble, Loyd Westfield
 Koons, Guy J. Oakland
 Volentine, Bertha New Douglas

1901

Caldwell, William A. Neoga
 Davis, Martha W. Charleston
 Doyle, Edna Lerna
 Haley, Nelle Arcola
 Iles, I. Victor Dudley
 Neal, Gertrude Charleston
 Scheytt, Clara J. Charleston
 Shoemaker, Theodora Charleston
 Slemmons, Antoinette L. Paris
 Vail, Frances De C Charleston
 White, Millie E. Charleston

1902

Carothers, Ida E. Mattoon
 Edman, Frances Charleston
 Fiock, Edward J. Olney
 Foster, Sylvia S. Girard
 Gaiser, Katherine Charleston
 Harding, Gertrude Charleston
 Moore, Florence Charleston
 Parks, Laura A. Dexter
 Riggins, John A. Hutton
 Shy, Nelle Kansas
 Ward, Jennie St. Mary's, Ind.
 White, Mahala Charleston
 Woodson, Elsie Charleston

1903

Balter, Gertrude A. Charleston
 Dougherty, Philip Charleston

Doyle, Eliza	Lerna
Ellison, Grace	Mattoon
Farrar, Roscoe	Dorans
Ficklin, Mary	Charleston
Freeman, Ernest	Charleston
Gordon, Charles	Lawrenceville
Harker, Josephine	Peoria
Harrah, Hattie A.	Charleston
Harris, William	Moweaqua
Huston, Myrtle	Charleston
Jenkins, Katherine	Charleston
Littler, Sherman	Potomac
Lumbrick, Arthur	Charleston
McDonald, Alice B.	Charleston
Persons, Zulu	Danville
Reeder, John C.	Humboldt
Shannon, Mary	Mattoon
Shoot, Bonnie	Charleston
Stewart, Charles	Charleston
Wade, William E.	Redmon
Wallace, Charles	Charleston
Wright, Mabel	Charleston
Young, Eva N.	Effingham

1904

Anderson, Ethel	Charleston
Bubeck, Charles M.	Marshall
Bullock, Florence W.	El Paso
Byers, Bessie B.	Charleston
Coon, Mary W.	Charleston
Dewhirst, David M.	Olney
DeWolfe, John C.	Pana
DeWolfe, Lucy L.	Pana
Dorris, Sylvanus A.	Isabel
Ferguson, Jessie L.	Charleston
Hagemeyer, Bartlett	Butler, Ky.
Hays, Cecilia M.	Mattoon
LaRue, Ruth A.	Etna
Littler, Carrie	Potomac
Lycan, Lydia B.	Kansas
McDonald, Louis L.	Charleston
Rapp, Martha B.	Mattoon
Rauch, Arlie B.	Charleston
Record, Loue	Charleston

Sims, Nelle	Charleston
Thissell, Bessie I.	Charleston
Walker, Emma	Casey
Waggoner, Alvin	Gays
Weatherly, Carrie	Paris
Webb, Anna	Charleston
Wilson, Ethel V.	Chrisman

1905

Anderson, Mabel	Charleston
Balch, Eva	Lerna
Balch, Flora	Lerna
Bradley, Irma M.	Charleston
Brewer, Mary	Charleston
Cavins, Henrietta O.	Mattoon
Chumley, Eugene	Owaneco
Cottingham, Carrie E.	Charleston
Edman, Minnie	Charleston
Ferrish, Lewis	Charleston
Gannaway, Ethel	Charleston
Henderson, Frank	Isabel
Hobbs, Anna C.	Charleston
Honn, Edward F.	Charleston
Honn, Josephine W.	Ashmore
Huron, Helen B.	Charleston
Lee, Jessie E.	Pesotum
Little, Nelle M.	Danville
Maxham, Ula	Charleston
McDonald, Elmer M.	Lerna
Overholser, Nora G.	Charleston
Phipps, Charles	Charleston
Randolph, Edgar D.	Gays
Shoot, Gertrude T.	Charleston
Stanberry, Jessie O.	Greenup
Stark, Cecil	Hume
Tohill, Flossie	Flat Rock
Tooke, Helen E.	Charleston
Warman, Hattie M.	Charleston
Wentz, Roy A.	Hindsboro

1906

Bainbridge, Albert O.	Shelbyville
Baker, W. W.	Charleston

Bishop, Daisy	Charleston
DeWolfe, Donald J.	Pana
Dunbar, Christina	Sterling
Dwyer, Ellen F.	Charleston
Earnhart, William H.	Flat Rock
Evans, Minnie L.	Charleston
Faris, Mildred	Lerna
Fender, Charles W.	Ashmore
Foote, Luanda	Charleston
Freeman, Frances F.	Charleston
Geddes, Grace	Newton
Hackley, Gertrude	Mattoon
Harry, Bertha	Humboldt
Hashbarger, Clara B.	Arcola
Kyger, Roy J.	Danville
Long, Florence E.	Charleston
McNutt, Wade	Oconee
Reat, Ruth	Charleston
Sargent, Paul T.	Charleston
Sargent, St. John	Charleston
Williams, Lucia Q.	Mattoon
Wooll, Jessie	Charleston

1907

Barrett, Agnes	Mattoon
Black, Paul	Greenup
Bradford, Ernest C.	Hindsboro
Bruner, Mabel R.	Mattoon
Clark, Nellie N.	Mattoon
Covey, Jessie B.	Sullivan
Cruzan, Myrtle A.	Mattoon
Dappert, Nora E.	Taylorville
Davis, Lois M.	Charleston
Edman, Eulalie	Charleston
Freeman, Agnes M.	Charleston
Hagan, Warren L.	Windsor
Hamill, Lena	West Union
Harwood, Otto	Janesville
Heil, Sopha E.	Arcola
Holiday, Marguerite	Mattoon
Mabee, Elsie	Charleston
Martin, Jessie C.	Arthur
McGinnis, Marguerite	Alton
McNutt, Mary I.	Springfield

Pumphrey, Hazel A.	Oak Park
Stewart, Bertha B.	Charleston
Stewart, Bessie H.	Metropolis
Travis, Edna C.	Greenville
Wait, Bernice	Greenville
Wallar, Beulah H.	Oak Park
Wright, Helen A.	Charleston

1908

Barringer, Edna	Hillsboro
Bottenfield, Ezra O.	Oblong
Brown, Victor I.	Oblong
Carney, Lydia Z.	Charleston
Crum, Edna B.	Charleston
Crummins, Edna	Rose Hill
Davis, Leonard E.	Charleston
Drayer, Julia A.	Hartford City, Indiana
Finley, Charles W.	Charleston
Gabel, Goldie	Greenup
Glassco, Melville	Charleston
Hosford, Jean	Danville
Hostetler, Ruth	Charleston
LaRue, Ella	Etna
Lucas, Douglas P.	Bath
Mabee, Mirtie	Charleston
Maris, Florence	Tuscola
Maris, J. Claire	Tuscola
McCrorry, Bertha E.	Charleston
McKittrick, M. Augusta.	Tower Hill
Meeker, William R.	Hazel Dell
Milholland, Arthur L.	Charleston
Murphy, Bessie	Charleston
Orcutt, Emily R.	Charleston
Price, Edna E.	Mt. Vernon
Riley, Ruth	Lerna
Summers, Mrs. Alice	Charleston
Tohill, Louis A.	Flat Rock
Wiman, Nelle	Oblong

1909

Belting, Paul E.	Charleston
Briggs, Margaret	Charleston
Brown, M. Ethel	Piqua, Ohio

Bruner, Mary V.	Mattoon
Buckmaster, Pluma N.	Charleston
Chamberlain, Frank	Gays
Coffman, Beryl L.	Salem, Indiana
Corzine, Harland W.	Charleston
Corzine, May I.	Charleston
Cossairt, Laura G.	Potomac
Davis, Myrtle A.	Charleston
Degenhardt, Irene	Alton
Dickerson, Jeanette M.	Curran
Dixon, Frances M.	Herrick
Feagan, Effie L.	Charleston
Foreman, Lulu B.	Charleston
Funkhouser, Fern	Mattoon
Funkhouser, Taylor	Mattoon
Gannaway, Lelia	Mattoon
Hanselman, Anna M.	Piqua, Ohio
Harry, J. Roscoe	Humboldt
Heil, Mary E.	Arcola
Homann, Ferdinand	Mattoon
Honn, Jessie M.	Ashmore
Hostetler, Lida A.	Charleston
Hostetler, Oliver C.	Charleston
Howe, Verna	Robinson
Huber, Harry L.	Mattoon
Hume, Chester	Danville
Ivy, Torney P.	Fillmore
McCabe, Edward L.	Charleston
Orr, Esther	Sidell
Phillips, John B.	Sullivan
Phillips, Oda O.	Sullivan
Smith, Fred	Yale
Tate, Ethel	Mattoon
Wamsley, Ruth R.	Charleston
White, Oshia	Charleston
Williams, Ethel	Mattoon

1910

Avey, Blanche	Le Roy
Bigler, Harry	Sigel
Birdzell, William	Charleston
Burke, Coral	Cloverdale, Indiana
Carman, Ruth	Charleston

Connelly, Rae	Westfield
Cottingham, Maude	Charleston
Davis, Sylva B.	Charleston
DeWolfe, Mary Estelle	Assumption
Driscoll, Irene	Charleston
Dwyer, Katherine	Charleston
Eck, Lulu E.	Charleston
Ernst, Jesse E.	Charleston
Fears, Amanda O.	Humboldt
Fellows, Mary E.	Neoga
Freeland, Minnie C.	Bellair
Givens, Harry	Paris
Glassco, Alia N.	Charleston
Hallock, Wilmetta	Charleston
Heeb, Evalena	Charleston
Hoggard, Goldie D.	Arthur
Huffman, Jessie T.	Charleston
King, Ivan W.	Charleston
Long, Ruth	Charleston
Lowry, Edith	Westfield
Martin, Patti C.	Arthur
Mathes, Georgia	Charleston
McCrary, Esther	Charleston
McDonald, Mary M.	Charleston
McNutt, Mrs. Lillian	Elgin
Miles, Sophia O.	Charleston
Milholland, Grace E.	Charleston
Mullins, Helen G.	Charleston
Munson, Kezia	Arcola
Nay, Mabel	Kansas
Patton, Mae	Arthur
Pendergast, Mary C.	Charleston
Powell, Zella F.	Mattoon
Rankin, Cora E.	Gibson City
Rardin, Bruce	Rardin
Riche, Mildred A.	Nora Springs, Iowa
Schmaelzle, Carl	Charleston
Serviss, Gladys	Charleston
Snapp, Carl F.	Findlay
Snapp, Roscoe	Findlay
Sullivan, Margaret E.	Charleston
Tarble, Charles	Martinsville
Voris, Katherine	Neoga
Watt, Bernice	Newton

Welsh, Grover F.	Paris
Wiman, Anna M.	Yale
Woodson, Amy L.	Charleston
Zimmerman, Henry H.	Effingham
Zimmerman, Percy	Charleston
Zimmerman, Robert L.	Mineral

1911

Archer, Susie Ethelyn	Charleston
Ashmore, Lulu Belle	Charleston
Brayton, Virgul Lucille	Charleston
Byers, Helen	Charleston
Coffey, Anna Elizabeth	Kansas
Faris, Susie	Lerna
Galbreath, Annie	Ashmore
Gallagher, Margaret Elizabeth	Alton
Gilchrist, Edith Lana	Shawneetown
Glassco, Hazel Gertrude	Charleston
Gray, Ruth	Charleston
Henry, Flossie Ethel	Kansas
Hill, Charles	Charleston
Hill, Stanley	Mattoon
Homann, Fred George	Mattoon
Jennings, Alma Irene	St. Elmo
Jennings, Walter Wilson	St. Elmo
Jones, Vernie Allen	Willow Hill
Kelly, Marguerite Agnes	Danville
Kibler, Carl M.	Wheeler
Linder, Lewis S.	Charleston
Long, Charles Ellsworth	Charleston
Maxham, Helen Jeanette	Charleston
McKittrick, Cynthia Ann	Tower Hill
Newman, Grace	Charleston
Parkison, Cora Alice	Charleston
Patrick, Ada	Decatur
Rennels, Ursa	Charleston
Rodecker, Wavery	Mulberry Grove
Schlobohm, Lucy Syvilia	Findlay
Schriner, Elizabeth Opal	Charleston
Sidwell, Eli Roscoe	Casey
Stanberry, Hewett Raymond	Charleston
Stewart, Alma	Ashmore
Taylor, Kathryn Blanche	Arthur

Taylor, Ruthe Arthur
 Tiffany, Burton Ellsworth Lawrenceville

1912

Adams, Della Ruth Allendale
 Ames, Nellie Blanche Charleston
 Anderson, Clara Alice Charleston
 Arterburn, Pauline Kansas
 Baird, Claire Emma Moweaqua
 Beall, Ruth Aurelia Paris
 Blackburn, Nema Elnora Paris
 Crowe, Elizabeth Drayer Charleston
 Dollohan, Martin Leland Lawrenceville
 Doscoska, Anna Charleston
 Endsley, Antha Euphemia Charleston
 Fleming, Denna Franklin Paris
 Furste, Alma Elizabeth Humboldt
 Gaiser, Lois Margaret Charleston
 Gossett, Vera Ople Casey
 Gossett, William Ernest Charleston
 Haley, Nellie Catherine Arcola
 Handshy, Ruby Ellen Worden
 Hardy, Edith May Waterloo
 Harris, Ruby Mildred Coffeen
 Hedrick, Edna May Le Roy
 Jenkins, Alice Charleston
 Jordan, Carrie Mae Charleston
 Kime, David Orion Dudley
 King, Robert F. Charleston
 Kisner, Edgar Lynn Bellair
 Lindhorst, Frank Atkinson Charleston
 Loggins, Edna Kathryn Greenville
 Lovett, Elizabeth Rosett St. James
 Maxwell, Florence Lelia Arcola
 McDougle, May Charleston
 Mitchell, Kate Charleston
 Neblick, Mary Edith Ridgefarm
 Newell, Emma Oak Park
 Newlin, Muriel Hazel Charleston
 Patton, Lola Arthur
 Phillips, Minnie Alice Sullivan
 Phipps, Anna Emma Charleston
 Pinkstaff, Orra Ford..... Lawrenceville

Randolph, Lillie	Charleston
Rankin, William Merle	Charleston
Rich, Ciney	Birds
Robinson, Runie T.	Charleston
Robinson, Ruth Love	Edwardsville
Root, Gretchen Lane	Newman
Rose, Ethel Maye.....	Bement
Rosebraugh, Esther May	Charleston
Sampson, Homer C.	Wheeler
Schriner, Bessie Dimple	Westfield
Sharp, Mildred	Mattoon
Shoot, Lois Mary	Charleston
Smith, Jessie Euphemia	Mattoon
Timm, Katherine Elizabeth	Arthur
Troutman, Mary Elizabeth	Charleston
Troutman, William Chilton	Charleston
Waters, Eunice	Denver, Colorado
Webster, Essie	Nokomis
Whalen, Mary M. F.	Charleston
Wieland, John Adam	Charleston
Willson, Hazel Elizabeth	Charleston
Wright, Fern Guy	Charleston

1913

Allison, Worth Arthur	Charleston
Briggs, Stella Ruth	Charleston
Butler, James Grove	Charleston
Case, Jennie	Charleston
Comer, Helen Louise	Charleston
Corzine, Bruce Herbert	Charleston
Davis, Loxa Edna	Charleston
Dorsey, Bessie Ferris	Moro
Dowler, Emery Ross	Tower Hill
Durbin, Clara Faye	Charleston
Dwyer, Anna Margaret	Charleston
Ewald, Paul George	Mt. Carmel
Ewing, Portia Stone	Neoga
Feagan, Gladys Evelyn	Charleston
Foster, Gertrude Elizabeth	Oak Park
Frakes, Reba Lenore	West Union
Franklin, Eleanor May	Casey
Frazier, Arthur Owen	Paris
Furness, Mabel Mary	Sullivan

Giffin, William Earl	Charleston
Goldsmith, Alonzo Fremont	Jewett
Hill, James Edward	Mattoon
Hudson, Louise Dorothy	Charleston
Jenkins, Sarah Camilla	Charleston
Kern, Vernon Harlow	Gays
Kimball, Lula	Westfield
Lee, Flossie Elaine	Casey
Linder, Kate Ethel	Alton
Malhoit, Irene Emma Rose	Assumption
Maxey, Rosettie	Oblong
McCandlish, Fred Raymond	Toledo
McDonald, Georgia Helen	Lerna
Meeker, Iva Pearl	Hazel Dell
Miller, Edith Marguerite	Charleston
Mitchell, Daniel Palmer	Loxa
Morse, Ora	Findlay
Patton, Bessie	Arthur
Pew, Blanche Agnes	Litchfield
Rankin, George Barrington	Charleston
Reeder, Maude	Humboldt
Reid, Emily Cleda	Lancaster
Rodgers, Eugene	Janesville
Schlobohm, Anna Katrina	Findlay
Shoemaker, James Wright	Charleston
Shreeve, Elizabeth Hortense	Charleston
Springer, Mary Virginia	Charleston
Steinmetz, Ferdinand Henry	Edwardsville
Stitt, Eva Winifred	Toledo
Strawbridge, Lois Mary	Danville
Terry, Edna Fern	Charleston
Tolly, Ruth	Charleston
Wannamaugher, Elva Lucile	Greenville
West, Linnie Minnie	Watseka
Wilson, Amy Rose	Belle Rive

1914

Alexander, Nancy Stephanie	Charleston
Baker, Nellie Esther	Martinsville
Barger, Joseph Louis	Charleston
Beatty, Elsie Emily	Paris
Bott, Margaret	Hume
Boyle, Willard Pressly	Oakdale

Burghart, Verna May	Covington, Ind.
Campbell, Gladys	Oakland
Chapman, Bertha Mae	Charleston
Chenoweth, Lela Marian	Charleston
Chenoweth, Lola Mitchell	Charleston
Daringer, Helen Fern	Danville
Doty, Flolla Annis	Charleston
Eads, Margaret Janet	Arthur
Freeman, Madge Marina	Charleston
Furness, Edna May	Sullivan
Fye, Mary E.	Mattoon
Gardner, Marie Agnes	Charleston
Gerkin, Margarete Elenora	Greenville
Goodson, Mary Nancy	Newman
Gordon, Homer King	Charleston
Grant, Sophia Agnes	Charleston
Hall, Hazel	Charleston
Harvey, Manetta Wright	Arcola
Hayse, Lillian Dolena	Mt. Vernon
Helm, Jenness Rebecca	Charleston
Hill, Gertrude Ozeta	Sullivan
Hogan, Mary Elizabeth Aloysia	Assumption
Horne, Helen Marguerite	Bellefontaine, O.
Hutton, Nina Hazel	Charleston
Jacoby, Katherine Alberta	Arcola
Jones, Leonard	Charleston
Kibler, Ima Blanche	Newton
Kilgore, Edna Charlotte	Charleston
Lahey, Anna Rose	Mattoon
Love, Juneta Grace	Charleston
Malhoit, Honora Aloysia	Assumption
Mansfield, Mary Rose	Mattoon
McDougle, Grace Almira	Humboldt
Miller, Bertie Ethel	Westfield
Moffett, Helen Irene	Ashmore
Murphey, Edith May	Urbana
Prather, Ona Alice	Charleston
Randolph, Glenn Lake F.	Charleston
Reed, Lorena Marie	Charleston
Robinson, Mary Virginia	Charleston
Rodgers, Faye Rhiesta	Charleston
Rogers, Mary Olive	Charleston
Sanborn, Lillian	Spring Grove
Schernekau, William John	West Salem

Scott, Ella Grace	Newton
Shaw, Jane Lois	West Union
Shortess, Lois F.	Charleston
Smith, Goldie Isabelle	Newton
Smith, Myrtle Venis	Farina
Starkey, Agnes May	Mattoon
Thompson, Thomas Alexander	Arcola
Timm, Amelia Magdalena	Arthur
Whalin, Edwin Ansil	Rose Hill
Whalin, Oren Leslie	Rose Hill
White, Rena	Charleston
Wilkinson, Cecil Herbert	Charleston
Wise, Mae Adelle	Greenville
Wissel, Bertha Irene Mildred	Charleston
Woliung, Lydia Augusta	Mattoon

1915

Anderson, Julian Piper.....	Charleston
Balch, Nellie Allison	Lerna
Bidle, Jessie	Charleston
Bridges, Ethel Faye Marie	Litchfield
Bryant, Gladys Leone	Troy
Cline, Herschel Herman	Charleston
Cook, Gordon August	Charleston
Cooke, Bessie May	Mattoon
Corzine, Bernice Martha	Charleston
Cressler, Martha Marie	Decatur
Davis, Mabel Ernestine	Charleston
Doty, Flossie Irma	Charleston
Duvall, Judith	Lerna
Dwyer, Mary Agnes	Charleston
Evinger, Agnes Gertude	Litchfield
Fortner, Bertha Cora	Windsor
George, Clara Edna	Tuscola
Gilbert, Pearl	Danville
Glosser, Stanley Ivan	Charleston
Hampton, Maurice	Charleston
Hanks, Jessie Mable	Danville
Heidler, Martha	Springfield
Holsapple, Coen Edward	Toledo
Huddleston, Blanche Johns	Charleston
Hudson, Katharine	Charleston
Ireland, Lillian Margareta	Vandalia

Kibler, David Franklin	Montrose
Linder, Mary Sefton	Charleston
Linder, Ruth	Alton
Martin, Kate Valentine	Mattoon
Martyn, Irna Lorraine	Charleston
May, Eda Marie.....	Charleston
McCarty, Inez Azetta	Robinson
McLaughlin, Mary Cecilia	Paris
McNutt, Elizabeth Foulkrod	Springfield
Money, Shirley	Newton
Naumer, Louise Calanthe	Altamont
Newlin, Mary	Robinson
Parker, Jessie Margaret	Mattoon
Peters, Mary Loretta	Paris
Poulter, May Iva	Charleston
Reed, Sophia Pearl	Garrett
Ricketts, Dorothy Maude	Charleston
Rush, Alice Gertrude	Watseka
Spencer, Nora Virginia	Homer
Taubeneck, Earl Robert	Marshall
Tiffany, Lewis Hanford	Lawrenceville
Traylor, Rose Jennings	Coffeen
Walz, Maude Marie	Danville
Ward, Amy Lillian	Butler
Winston, Janet Greig	Springfield
Wood, Lorin Alfred	Waggoner

Former Members of Board of Trustees

	Date of Appointment
S. M. Inglis, Springfield	ex officio
Joseph H. Freeman, Springfield	ex officio
A. J. Barr, Bloomington	June 5, 1895
M. P. Rice, Lewiston	June 5, 1895
F. M. Youngblood, Carbondale	June 5, 1895
M. J. Walsh, East St. Louis	June 5, 1895
Calvin L. Pleasants, El Paso	June 5, 1895
H. A. Neal, Charleston	April 14, 1897
L. P. Wolf, Peoria	April 14, 1897
A. H. Jones, Robinson	April 14, 1897
W. H. Hainline, Macomb	April 14, 1897
Alfred Bayliss, Springfield	ex officio
W. L. Kester, Kansas	Nov. 6, 1899
Charles H. Austin, Elizabethtown	July 25, 1900

H. G. Van Sandt, Montrose	June 4, 1901
Clarence H. Oxman, Grayville	July 25, 1904
J. H. Marshall, Charleston.....	May, 1901
J. S. Culp, Bethalto	May, 1901
Scott Burgett, Newman	January, 1907
B. H. Pinnell, Kansas	January, 1907

Former Members of the Faculty

*S. M. Inglis, President	1898
*Louis H. Galbreath, Supervisor of Training Department	1899
*G. W. Smith, School Law and Geography... ..	1899
Luther E. Baird, Assistant in English.....	1899-1900
James H. Brownlee, Reading	1899-1900
Ella F. Corwin, Librarian	1899-1900
Bertha Hamlin, Critic Teacher in Grammar School	1899-1900
Mrs. Louise B. Inglis, History	1899-1900
J. Paul Goode, Physics and Geography.....	1899-1901
Alice B. Cunningham, Critic Teacher in Pri- mary School	1899-1901
*Frances E. Wetmore, Registrar	1899-1903
*W. M. Evans, English	1899-1904
Edna T. Cook, Critic Teacher in Grammar School	1899-1904
Charlotte M. Slocum (Mrs. George C. Ash- man), Critic Teacher in Primary School.	1899-1905
Henry Johnson, History	1899-1906
Francis G. Blair, Supervisor of Training De- partment	1899-1906
Otis W. Caldwell, Biological Sciences	1899-1907
*Anna Piper, Drawing	1899-1913
Edith P. Bennett, Critic Teacher in Grammar School	1900-1901
Grace W. Knudsen, Geography	1900-1901
Florence M. Beck, (Mrs. Thomas McLachlin), Librarian	1900-1904
Alice L. Pratt (Mrs. Carter Weaver), Critic Teacher in Grammar School.....	1900-1904
James A. Dewey, Physics	1901-1902
Roswell C. McCrea, History and Civics	1901-1902
George D. Hubbard, Geography	1901-1903
*Elizabeth Branch, Assistant Librarian.....	1901-1904

Katherine Gill (Mrs. Clarence R. West), Reading and Physical Culture	1901-1904
Charlotte Kluge (Mrs. Frank Popham), Critic Teacher in Grammar School.....	1901-1904
Eva M. Russell, Assistant in Mathematics...	1901-1905
Clara M. Snell (Mrs. A. B. Wolfe), Critic Teacher in Primary School	1901-1906
Thomas H. Briggs, English	1901-1911
Elmer I. Shepard, Assistant in Mathematics..	1902-1903
Thornton Smallwood, Physics and Chemistry.	1902-1903
Caroline A. Forbes, Manual Training.....	1902-1913
Beatrice Pickett, German and History.....	1903-1907
Sadie Harmon, Critic Teacher in Grammar School	1904
Inez Pierce, Assistant Librarian	1904-1905
Edith C. Bailey, Reading	1904-1906
Mamie H. O'Neal (Mrs. Chauncey Doty), Registrar	1904-1906
Lorena C. Sidey (Mrs. William Tapper), Critic Teacher in Grammar School.....	1904-1906
Nettie B. Dickson (Mrs. T. L. Hankinson), Critic Teacher in Grammar School.....	1904-1907
J. C. Brown, Mathematics	1904-1911
Elnora J. Richardson, Assistant in Mathematics	1905-1906
Margarethe Urdahl (Mrs. L. A. Anderson), German and History	1905-1906
Grace D. Phillips, Assistant Librarian	1906
L. Lance Burlingame, Assistant in Biology ..	1906
Josie Batcheller Houchens, Assistant Librarian	1906
Florence Harrison, Reading	1906-1907
Ida E. Carothers (Mrs. Ralph Merriam), Botany	1906-1907
Charlotte M. Jackson, Assistant Librarian...	1906-1912
Eva Southworth, Critic Teacher in Grammar School	1906-1910
Mathematics	1911-1913
*Charlotte Amy Rogers, History in the Grades	1907-1908
Amelia Harrington, Critic Teacher in Grammar School	1907-1909
Lotus D. Coffman, Supervisor of Training Department	1907-1912

Forrest Sumner Lunt, Reading	1907-1912
Edgar N. Transeau, Biological Sciences	1907-1915
Katherine Pfeiffer, Head of Pemberton Hall.	1908-1909
Lillian E. Ravenscroft, Critic Teacher in Grammar School	1909
Estelle Gross, Head of Pemberton Hall	1909-1910
Grace Williams, Critic Teacher in Grammar School	1909-1910
Alice M. Christiansen (Mrs. Walter C. Good- pasture), Physical Education	1909-1912
Margaret B. Pumphrey, Critic Teacher in Pri- mary School	1910
M. W. Deputy, Supervisor of Training De- partment	1909-1910
Elsie Woodson (Mrs. Jay G. Butler), History in the Grades	1909-1911
Genevieve Fisher, Critic Teacher in Grammar School	1910-1911
Myrtle A. Davis, Botany and Grammar	1910-1911
Leonard Davis, Grammar and Arithmetic....	1910-1914
Clara Miller, Mathematics	1911
Olive B. Horne, Critic Teacher in Grammar School	1911-1914
Mabel Barnhart, Music	1912
E. E. Lewis, Supervisor of Training Depart- ment	1912-1913
Royal E. Davis, Botany	1912-1913
Ethel West (Mrs. Charles S. Demarest), As- sistant Librarian	1912-1913
Alanson H. Edgerton, Manual Training.....	1913-1914
DeWitt C. Sprague, English.....	1913-1915

*Deceased.



OUTLINE OF COURSES OF STUDY

	I. <i>The One-Year Course</i>	II. <i>The Two-Year Course</i>	III. <i>The Three-Year Course</i>	IV. <i>The Four-Year Course</i>	V. <i>A Five-Year Course</i>	V. C. <i>Another Five-Year Course</i>	An Adjustment Course	Electives IX., X., XI.	Electives A, B. <i>For Juniors and Seniors</i>
	For College Graduates.	For Graduates of Four-Year High Schools	For Graduates of Three-Year High Schools or Holders of First-Grade Certificates.	For those who have completed two years of High-School Work or who hold Second-Grade Certificates.	For Graduates of the Eighth Grade.	For Graduates of the Eighth Grade who wish to prepare to teach a country school. The first two years of this course give principally the subjects required for a second-grade certificate.	For students who have already begun the former Four-Year Course.	Latin 3† German 3 History 2 X., XI. Science 3 Physics 1, XI. Zoology 1, XI. Botany 1, X., XI. Mathematics 1 Manual Training 2 Agriculture 2, X., XI. Physical Education (third year) ½ School Hygiene ½ General Science ½ Home Economics 1, XI.	Latin 2 German 2 History 2 English Literature 2 Mathematics 2 Economics 1 Science Physics 1 Zoology 2 Botany 2 Chemistry 1 Geography 1½ Geology ½ Reading 1 Drawing 1 Home Economics 4 Manual Training 2 Agriculture 2 Practice Teaching 1 The Teaching of English ½ Arithmetic ½ Geography ½ History ½ Physical Education (third year) ½ School Hygiene ½
Number of units* required for graduation	5	10	14	18	22	22	18		
Class IX.				There must be no duplicating of work offered for entrance.	English 1, 2 Algebra 1, 2 History 1, 2 Elective Physical Education 1, 2, (2)	English 1, 2 Arithmetic 1, 2 Botany 1 Physiology and Hygiene Reading (3), Music (2), Drawing (2), 1, 2 Elective Allowed Physical Education 1, 2, (2)			
X.				§English 3, 4 Algebra 1, 2 Botany 1, 2 Elective Physical Education 1, 2, (2)	English 3, 4 Geometry 1, 2 Botany 1, 2 Elective Physical Education 3, 4, (2)	English 3, 4 Element. Agric. 9 Geography 1, 2 History and Civics 5, 6 Observation 1 (2) Observation 2 (4) Elective Allowed Physical Education 3, 4, (2)			
XI.			Complete four units without duplicating of work, but including required work of IX., X., XI., not done before entering this school. Physical Education 1, 2, (2)	English 5, 6 Geometry 1, 2 Geography 1, 2 Elective Physical Education 3, 4, (2)	English 5, 6 Geography 1, 2 Physics 1, 2 or Elective Elective	English 5, 6 Algebra 1, 2 History 1 or 2 Elective ½ Elective			
B Junior	Complete five units taken from work offered for A and B Classes.	Psychology 1, 2 Arithmetic 3; History 7, (or 9, 10, 11, 12) Geography 3; English 11, or 12 Reading 3, 4, (3); Drawing 3, 4, (2) Elective Physical Education 1, 2, (2)		Psychology 1, 2 Arithmetic 3; History 7, (or 9, 10, 11, 12) Reading 3, 4, (3); Drawing 3, 4, (2) Elective Elective		Psychology 1, 2 Special Method 1, 2 Geometry 1, 2, (or Elective) Physics 1, 2 Elective	4 B Psychology 1, 2 History 7; Special Method 1, or ½ Elective Unit Physics 1, 2 (or Elective) Elective Elective		
A Senior		Education 1, 2 Teaching 1, 2, (5) Physiology; Manual Training 7, (3), Music 3, (2) Elective Elective Physical Education 3, 4 or 5, 6, (2)			Education 1, 2 Teaching 1, 2 Elective Elective Elective	4 A Education 1, 2 Teaching 1, 2 Physiology; Manual Training 7 (or elective unit) Elective Elective			

* A unit is a year's work in a subject reciting not less than four times a week.

† Numbers after subjects in the columns under courses indicate the number of the course as described in the catalogue. Numbers in parentheses indicate the number of recitations per week. In the IX., X., XI. years, each unit subject comes five times a week; in the A and B years, four times a week; laboratory sciences require six periods a week.

‡ Numbers after subjects in the columns of electives indicate the number of units or years of work offered.

§ Students who are found to be unable to take English 3, 4 will be conditioned in English 1, 2 and required to take it.

° Students who have not had English 1, 2 are required to take English 11 in place of one-half unit elective.

The school year consists of two terms of 19 weeks each.

Physical education, two periods a week, is required in the first two years of each course.

FIRST TERM PROGRAMME, 1916 - 1917

7:30-8:15	8:15-9:00	9:30-10:20	10:20-11:10	11:20-12:10	1:20-1:30	1:30-2:20	2:20-3:10	3:10-4:00	4:00-4:50	4:50-5:40
	Education 2-2, 3, 5, 6 II. Observation A-4	Education 1-2, 3, 5, 6 I. Observation A-4 I. Psychology 1-2, 3, 4, 5 II. Psychology 1-2, 3, 4, 5	English 11-2, 3, 5, 6 English 12-2, 3, 5, 6 I. English 3 II. English 2 I. English 1 III. German 1-2, 3, 4, 5	IV. Psychology 1-2, 4, 5, 6 Literature 7-2, 4, 5, 6 V. English 1 VI. English 1 IV. German 1-2, 4, 5, 6 Reading 2-2, 4, 5		III. Psychology 1-2, 4, 5, 6 English 4 I. English 2 German 5-2, 3, 4, 5 II. German 1 I. Reading 3-3, 5, 6 I. Reading 1-2 IV. History 1	Literature 9-2, 3, 4, 5 English 5 III. English 1 II. German 3-2, 3, 4, 5 II. Reading 1-2, 4, 5 History 9-2, 3, 4, 5 History 2 I. History 1			
IV. Reading 3-2, 4, 6	I. German 3 I. German 1 II. Reading 3-2, 4, 5 I. Reading 1-3, 6 History 11-2, 3, 4, 6 I. History 5 I. Latin 1 I. Arithmetic 3-2, 3, 4, 6 II. Arithmetic 1 Arithmetic 2	II. Latin 1 I. Algebra 1 Algebra 2 I. Geometry 1	II. History 5 II. History 1 Latin 3 (Caesar) III. Algebra 1 IV. Algebra 1 II. Geometry 1 Geometry 2	Economics 1-2, 4, 5, 6 History 3 III. History 1 Latin 7 (Virgil)			I. Arithmetic 1 II. Algebra 1 Solid Geometry-2, 3, 4, 5 Geography 2 Geology-2, 3, 4, 5	II. Arithmetic 3-2, 3, 4, 5		
Trigonometry-2, 3, 4, 5	Physics 1	II. Geography 1	I. Geography 3-2, 3, 4, 5 II. Geography 3-2, 3, 4, 5 I. Physiology-3, 4, 5, 6	I. Geography 1 General Science 1	Chemistry 1 Zoology 3	III. Geography 1 Chemistry 1 Zoology 3				
Physics 1-3, 5	Zoology 1-2, 3, 5	II. Physiology-3, 4, 5, 6	I. Botany 1-2, 4, 6 II. Botany 1-2, 3, 5 III. Drawing 3-4, 5 I. Music 1-3, 5 II. Music 1-4, 6	Botany 7 Agriculture 9 Drawing 2-3, 6 Manual Training 1		III. Botany 1-4, 6 IV. Botany 1-2, 3, 5 Agriculture 7 I. Drawing 3-2, 4 Manual Training 5 Music 4-3, 5 I. Domestic Science 1-2, 3, 5 School Hygiene 10-2, 3, 4, 5	III. Botany 1-2, 4, 6 IV. Botany 1-2, 3, 5 Drawing 5-2, 3, 4, 5 Observation 1-3, 5	II. Domestic Science 1-4, 6 Domestic Science 3-2, 3, 5	Domestic Science 3-3, 5	
Zoology 1-2, 3, 5	Agriculture 3 II. Drawing 3-3, 6 I. Drawing 1-4, 5 Manual Training 3	I. Botany 1-2, 4, 6 II. Botany 1-2, 3, 5 III. Drawing 3-4, 5 I. Music 1-3, 5 II. Music 1-4, 6	*Music 3-3, 5 Music 2-4, 6	Domestic Art 1	Manual Training 5	I. Domestic Science 1-2, 3, 5 School Hygiene 10-2, 3, 4, 5 IV. Physical Education 1-3, 5	II. Domestic Science 1-2, 4, 6 I. Domestic Science 1-3, 5 I. Physical Education 1-2, 4	II. Domestic Science 1-4, 6 Domestic Science 3-2, 3, 5 II. Physical Education 1-3, 5	Physical Education 3-2, 4	Physical Education 3-2, 4
IV. Drawing 3-3, 5	Domestic Art 3-2, 4, 6			Physical Education 5-2, 4, 6 III. Physical Education 1-3, 5						
Domestic Art 3-2, 4	Physical Education 7 (to be arranged)		*For seniors who have completed physiology.							For Young Men Physical Education 1-2, 4 II.-3, 5 IV. To be arranged

SECOND TERM PROGRAMME

7:30-8:15	8:15-9:00	9:30-10:20	10:20-11:10	11:20-12:10	1:20-1:30	1:30-2:20	2:20-3:10	3:10-4:00	4:00-4:50	4:50-5:40
	Education 1-2, 3, 5, 6 II. Observation A-4	Education 2-2, 3, 5, 6 I. Observation A-4 I. Psychology 2-2, 3, 4, 5 II. Psychology 2-2, 3, 4, 5	III. German 2-2, 3, 4, 5 English 11-2, 3, 5, 6 English 12-2, 3, 5, 6 I. English 4 II. English 3 I. English 2 I. Reading 2-2, 4, 6 Latin 4 (Caesar) III. History 6 II. History 2 III. Algebra 2 II. Geometry 2 I. Geography 3-2, 3, 4, 5 II. Geography 3-2, 3, 4, 5 II. Physiology I. Botany 1-2, 4, 6 General Science 1	IV. Psychology 2-2, 4, 5, 6 IV. German 2-2, 4, 5, 6 Literature 8-2, 4, 5, 6 IV. English 2 V. English 2 Economics 2-2, 4, 5, 6 Reading 1-2, 4, 5 Latin 8 (Virgil) History 4 III. History 2 III. Geometry 2 I. Geography 2		III. Psychology 2-2, 4, 5, 6 German 6-2, 3, 4, 5 II. German 2 I. English 3 IV. English 2 I. Drawing 4-2, 4 II. Drawing 2-3, 5 I. Reading 4-3, 5, 6 Civics History 1 Arithmetic 1 III. Geography 2	II. German 4-2, 3, 4, 5 Literature 10-2, 3, 4, 5 English 6 III. English 2 Drawing 6-2, 3, 4, 5 II. Reading 2-2, 3, 4, 5 Observation 2-2, 3, 4, 5 Algebra 3-2, 3, 4, 5 II. Algebra 2 I. Arithmetic 2 Geography 1 Geography 5-2, 3, 4, 5 History 10-2, 3, 4, 5 I. History 2			
IV. Reading 4-2, 4, 6	III. English 4 I. English 1 I. German 4 I. German 2 II. Reading 4-2, 4, 5 II. Latin 2 I. Arithmetic 3-2, 3, 4, 6 II. Arithmetic 3-2, 3, 4, 6 II. Arithmetic 2 Algebra 1 Physics 2 Zoology 2-2, 3, 5 Agriculture 4 II. Drawing 4-3, 6 Domestic Art 4-2, 4, 6 Manual Training 4 I. Music 2-3, 5 I. Drawing 2-4, 5 I. History 6	III. Reading 4-2, 3, 6 I. Algebra 2 I. Geometry 2 II. Geography 2 I. Physiology I. Botany 1-2, 4, 6	III. Drawing 4-4, 5 Music 1-3, 5	Botany 8 Agriculture 9 General Science 2 Drawing 1-3, 6 Manual Training 2 Domestic Art 2	Zoology 4 Chemistry 2 Manual Training 6 Domestic Art 2	Zoology 4 Agriculture 8-2, 3, 4, 5 Chemistry 2 I. Botany 2-4, 6 II. Botany 2-2, 3, 5 Manual Training 6 Music 5-3, 5 II. Music 2-2, 4 I. Domestic Science 2-2, 3, 5 School Hygiene 10-2, 3, 4, 5	I. Botany 2-2, 4, 6 II. Botany 2-2, 3, 5 II. Domestic Science 2-2, 4, 6 I. Domestic Science 2-3, 5	I. Botany 2-2	Domestic Science 4-3, 5 Domestic Science 4-2, 3, 5	Physical Education 4-2, 4
Analytics-2, 3, 4, 5	II. Arithmetic 2 Algebra 1 Physics 2 Zoology 2-2, 3, 5 Agriculture 4 II. Drawing 4-3, 6 Domestic Art 4-2, 4, 6 Manual Training 4 I. Music 2-3, 5 I. Drawing 2-4, 5 I. History 6	III. Reading 4-2, 3, 6 I. Algebra 2 I. Geometry 2 II. Geography 2 I. Physiology I. Botany 1-2, 4, 6	III. Drawing 4-4, 5 Music 1-3, 5	Botany 8 Agriculture 9 General Science 2 Drawing 1-3, 6 Manual Training 2 Domestic Art 2	Zoology 4 Chemistry 2 Manual Training 6 Domestic Art 2	Zoology 4 Agriculture 8-2, 3, 4, 5 Chemistry 2 I. Botany 2-4, 6 II. Botany 2-2, 3, 5 Manual Training 6 Music 5-3, 5 II. Music 2-2, 4 I. Domestic Science 2-2, 3, 5 School Hygiene 10-2, 3, 4, 5	I. Botany 2-2, 4, 6 II. Botany 2-2, 3, 5 II. Domestic Science 2-2, 4, 6 I. Domestic Science 2-3, 5	I. Botany 2-2	Domestic Science 4-3, 5 Domestic Science 4-2, 3, 5	Physical Education 4-2, 4
Physics 2-3, 5 Zoology 2-2, 3, 5	II. Arithmetic 2 Algebra 1 Physics 2 Zoology 2-2, 3, 5 Agriculture 4 II. Drawing 4-3, 6 Domestic Art 4-2, 4, 6 Manual Training 4 I. Music 2-3, 5 I. Drawing 2-4, 5 I. History 6	III. Reading 4-2, 3, 6 I. Algebra 2 I. Geometry 2 II. Geography 2 I. Physiology I. Botany 1-2, 4, 6	III. Drawing 4-4, 5 Music 1-3, 5	Botany 8 Agriculture 9 General Science 2 Drawing 1-3, 6 Manual Training 2 Domestic Art 2	Zoology 4 Chemistry 2 Manual Training 6 Domestic Art 2	Zoology 4 Agriculture 8-2, 3, 4, 5 Chemistry 2 I. Botany 2-4, 6 II. Botany 2-2, 3, 5 Manual Training 6 Music 5-3, 5 II. Music 2-2, 4 I. Domestic Science 2-2, 3, 5 School Hygiene 10-2, 3, 4, 5	I. Botany 2-2, 4, 6 II. Botany 2-2, 3, 5 II. Domestic Science 2-2, 4, 6 I. Domestic Science 2-3, 5	I. Botany 2-2	Domestic Science 4-3, 5 Domestic Science 4-2, 3, 5	Physical Education 4-2, 4
II. Drawing 4-3, 5 Domestic Art 4-2, 4 I. Manual Training 7-2, 3, 5 III. Manual Training 7-4	Physical Education 8 (to be arranged.)			Physical Education 5-2, 4, 6 III. Physical Education 2-3, 5	Manual Training 6 Domestic Art 2	IV. Physical Education 2-3, 5	I. Physical Education 2-2, 4	II. Physical Education 2-3, 5	Physical Education 4-2, 4	For Young Men Physical Education 1-2, 4 II.-3, 5 III. To be arranged

NOTES—Hours for piano and voice to be arranged. Roman numerals preceding a subject indicate the section of the class; Arabic numerals following a dash indicate the days of the week beginning with Monday. Morning exercises at nine o'clock. Recess at ten minutes past eleven.

