

5-1-1982

Claytonia virginica L.

Loy R. Phillippe

Illinois Natural History Survey, rickp@inhs.illinois.edu

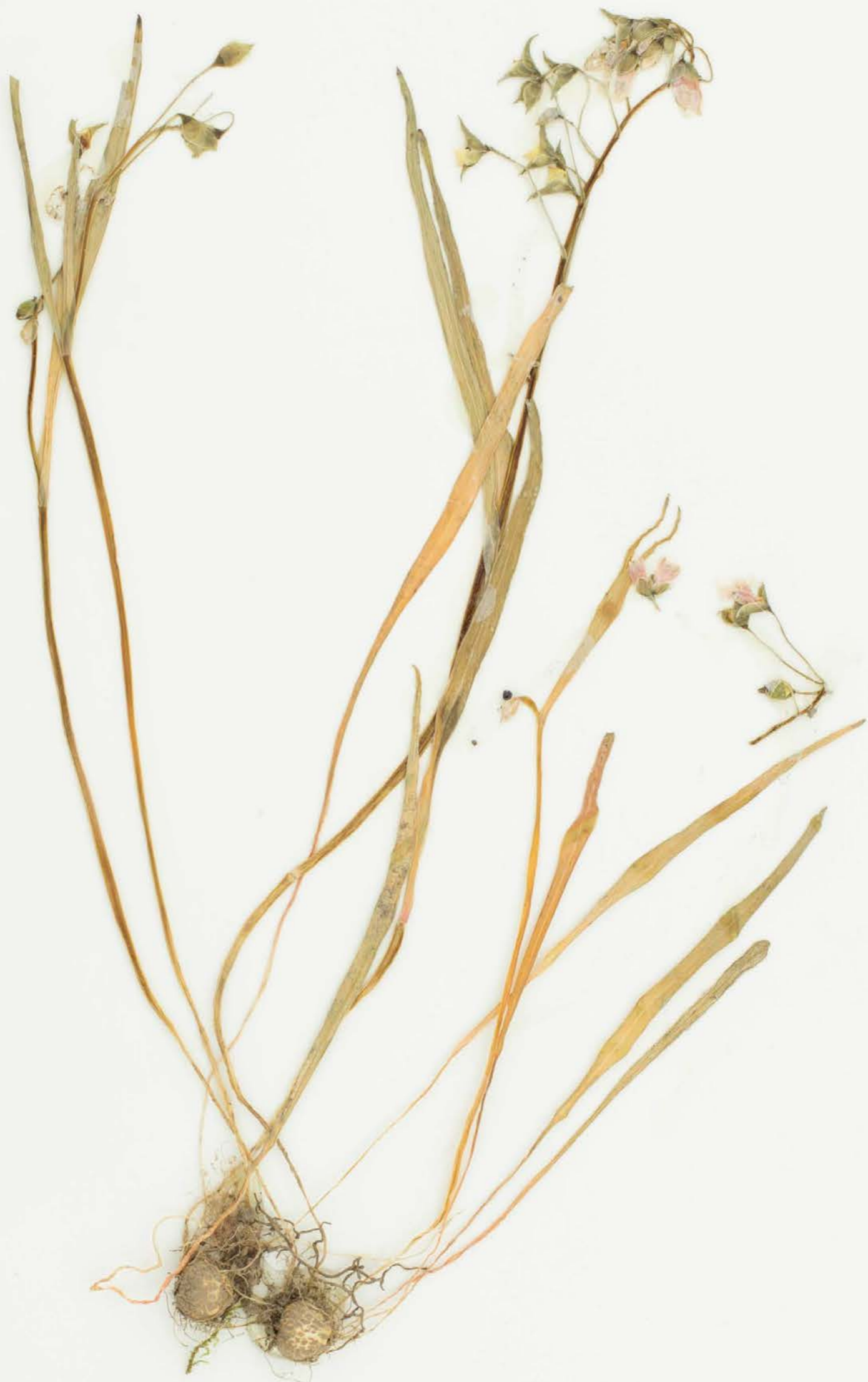
Follow this and additional works at: http://thekeep.eiu.edu/herbarium_specimens_byname



Part of the [Botany Commons](#)

Recommended Citation

Montiaceae, *Claytonia virginica*, L. U. S. A., West Virginia, Doddridge, Middle Island Creek. USGS Topo. West Union. Jack Ford Farm 1 mile south of Crystal Lake on west side of Middle Island Cr, 1-May-1982, Loy R. Phillippe, 11609, (EIU). Stover-Ebinger Herbarium, Eastern Illinois University. http://thekeep.eiu.edu/herbarium_specimens_byname/10326



STOVER HERBARIUM
EASTERN ILLINOIS UNIVERSITY

044230

THE FLORA OF WEST VIRGINIA

Doddridge Co.

Claytonia virginica L.

Flowers white with pink lines. Growing at base of wooded slope just above Middle Island Creek. USGS Topo. West Union. Jack Ford Farm about one mile south of Crystal Lake on west side of Middle Island Creek.

Coll. Loy R. Phillippe 11609

1 May 1982

HERBARIUM OF EASTERN ILLINOIS UNIVERSITY (EIU)

Claytonia virginica L.

Determined by John E. Ebinger Jan. 1992
Nomenclature follows R. H. Mohlenbrock, 1986
Guide to the Vascular Flora of Illinois

