

10-25-1973

# Acer saccharum Marshall

John E. Ebinger

*Eastern Illinois University, jeebinger@eiu.edu*

Follow this and additional works at: [http://thekeep.eiu.edu/herbarium\\_specimens\\_byname](http://thekeep.eiu.edu/herbarium_specimens_byname)

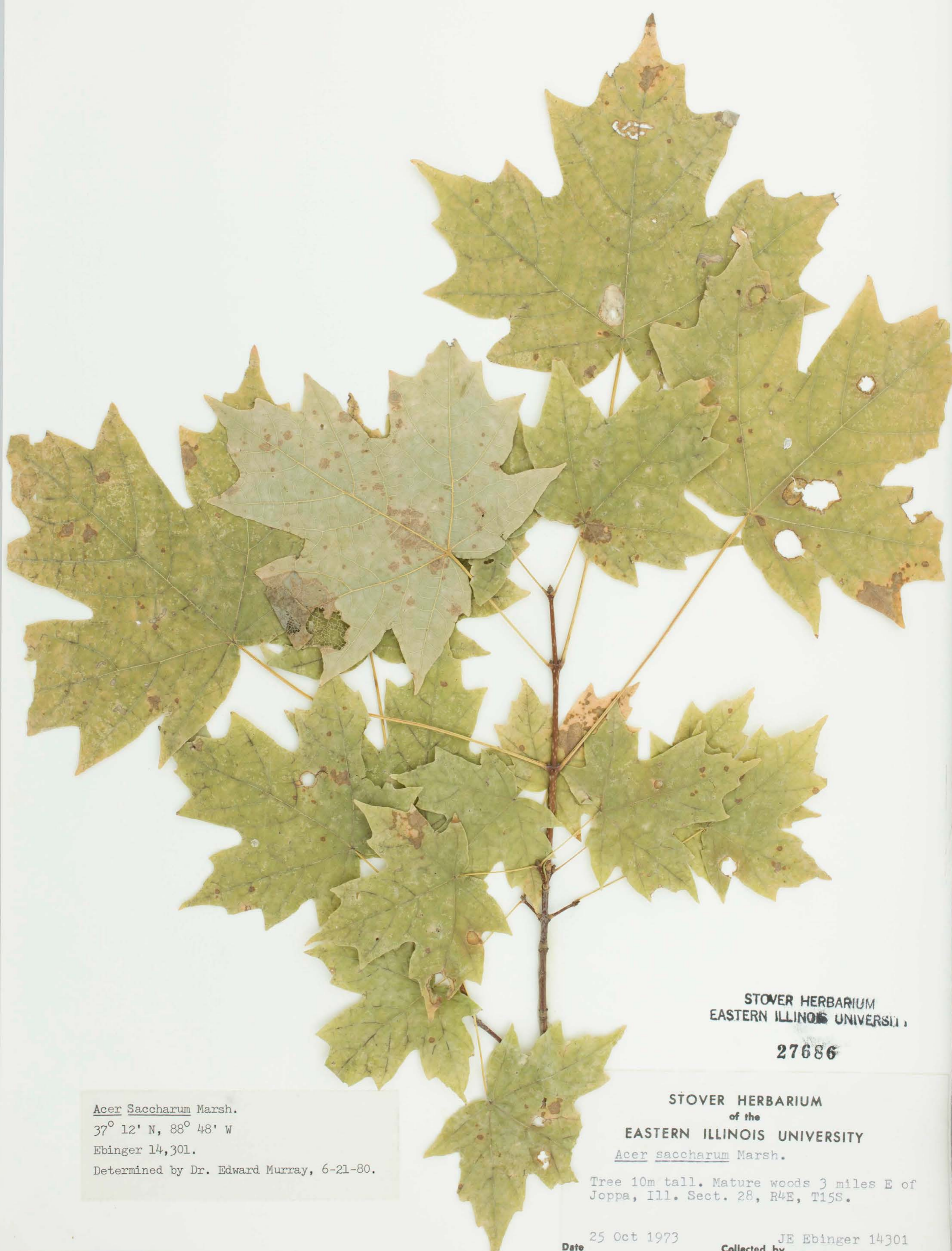
Part of the [Botany Commons](#)

---

## Recommended Citation

Sapindaceae, *Acer saccharum*, Marshall. USA, Illinois, Massac, Mautre woods 3 mi E of Joppa, IL sect. 28, R4E, T15S, 1973-10-25, Ebinger, John E., 14301, (EIU). Stover-Ebinger Herbarium, Eastern Illinois University. [http://thekeep.eiu.edu/herbarium\\_specimens\\_byname/9737](http://thekeep.eiu.edu/herbarium_specimens_byname/9737)

This Specimen is brought to you for free and open access by the Stover-Ebinger Herbarium at The Keep. It has been accepted for inclusion in Specimens by Name by an authorized administrator of The Keep. For more information, please contact [tabruns@eiu.edu](mailto:tabruns@eiu.edu).



Acer saccharum Marsh.  
37° 12' N, 88° 48' W  
Ebinger 14,301.  
Determined by Dr. Edward Murray, 6-21-80.

STOVER HERBARIUM  
EASTERN ILLINOIS UNIVERSITY  
27686

STOVER HERBARIUM  
of the  
EASTERN ILLINOIS UNIVERSITY  
Acer saccharum Marsh.

Tree 10m tall. Mature woods 3 miles E of  
Joppa, Ill. Sect. 28, R4E, T15S.

Date 25 Oct 1973 Collected by JE Ebinger 14301  
Location Massac County, Ill.