

9-19-1990

## Daily Eastern News: September 19, 1990

Eastern Illinois University

Follow this and additional works at: [http://thekeep.eiu.edu/den\\_1990\\_sep](http://thekeep.eiu.edu/den_1990_sep)

---

### Recommended Citation

Eastern Illinois University, "Daily Eastern News: September 19, 1990" (1990). *September*. 12.  
[http://thekeep.eiu.edu/den\\_1990\\_sep/12](http://thekeep.eiu.edu/den_1990_sep/12)

This is brought to you for free and open access by the 1990 at The Keep. It has been accepted for inclusion in September by an authorized administrator of The Keep. For more information, please contact [tabruns@eiu.edu](mailto:tabruns@eiu.edu).

**Weather**  
**Better**  
 Partly sunny and warmer Wednesday; high near 75

**City**  
**Stable Cable?**  
 Bill may reduce local rates.  
 Page 3

**Features**  
**Flatliner**  
 Eastern faculty member relates near-death experience.  
 Page 7



# The Daily Eastern News

Eastern Illinois University  
 Charleston, IL 61920  
 Vol. 76, No. 22  
 16 Pages

Wednesday, September 19, 1990

## Fraternity linked to possible hazing incident

By CHARLA BRAUTIGAM  
 Associate news editor

The Sigma Tau Gamma fraternity has been placed on interim suspension and is in danger of losing its recognition with the university following an alleged hazing incident Sept. 7. The fraternity was informed of its standing with the university through a letter drafted Thursday by Eastern Vice President for Student Affairs Glenn Williams. In the letter, Williams stated the university is suspended from all organizational activities including chapter and pledge meetings, IFC participation, homecoming and intramural participation until Eastern's Office of Student Activities completes an investigation into the alleged hazing incident. "The interim suspension is effective immediately," Williams wrote in the letter. "If any fraternity activity does take place, it will result in the immediate expulsion of the chapter. This does not entail ejection from Greek Court at this time," Williams continued. "Any further action on the part of the university will be contingent upon recommendations from the judiciary." The alleged hazing incident, which is a class B misde-

meanor, involves a Sigma Tau Gamma pledge who was found "incredibly intoxicated and very, very inebriated" outside McAfee Gymnasium on Sept. 7, said Eileen Sullivan, student activities adviser. The student, who was found by University Police, told officers he had been "at a party with his fraternity, where there had been a lot of drinking involved," Sullivan said. She added the student also told police that he had been forced to consume the alcohol. However, in its investigation of the alleged incident, Sullivan said there are "a lot of incongruities" in the stories reported by chapter president Gerry McElligott and chapter pledges. However, she declined to elaborate further. "We aren't sure where or when (the alleged incident took place)," Sullivan said. "We still have to determine whether or not the incident happened, and if any sanctions were broken." Sanctions, containing 12 different components pertaining to alcohol, were drafted and handed down to the fraternity this summer following a rock-throwing incident last spring that involved Charleston Police. The 12 sanctions are:  
 1. Absolutely no alcohol will be allowed in the chapter house in Greek Court.  
 2. No alcohol will be allowed in chapter members' individual

rooms at Greek Court, even if the said individual is 21 years of age.  
 3. The chapter may not sponsor nor co-sponsor any alcoholic social functions on any premises/property.  
 4. There will exist no social gatherings involving alcohol on any premises where 10 or more members are present.  
 5. The chapter may not utilize in any way, shape or form the former chapter house on Ninth Street for any alcoholic function.  
 6. The chapter will financially sponsor and coordinate an all-greek educational on risk management/reduction for the entire greek system.  
 7. The chapter must have representative attendance at all IFC and President's Council meetings, and all greek educational programs.  
 8. The chapter must arrange for a Charleston/Eastern police officer to speak to the chapter on the perils/dangers of alcohol abuse.  
 9. The chapter must assist the IFC/Panhellenic Social Awareness directors as they plan greek participation for alcohol awareness week.  
 10. The chapter must contact the general fraternity's national headquarters and attempt to arrange for a national

♣ Continued on page 2

## Cellar dwellers Despite disparities, most faculty fall short of peers

Editor's note: The following is the first in a series titled "Life at the Bottom." The series examines several issues related to faculty pay at Eastern. The series also examines repercussions for overall education.

By CAM SIMPSON  
 Senior reporter

Eastern's faculty are the lowest paid in the state. That news, which came last week from an annual state survey published by the Illinois Board of Higher Education, may not have been news at all for those teaching here: For the last 11 years Eastern's faculty have been at, or one slot away from, the bottom of the IBHE's annual pay list. However, what the annual state reports don't show is that not everyone teaching at Eastern is in bad shape. In fact, there are some departments where faculty members, on average, are doing as well or better than their national peers. By contrast, faculty in some departments are falling dramatically below the national norms for those teaching in their fields. According to Eastern's internal budget, nine-month, full-time faculty in the department of accounting, data processing and finance are making, on average, \$48,626. They are, on average, Eastern's highest paid faculty members and the only ones who exceed the national average, or national "market value," for faculty in their field. The department's average is 4.02 percent higher than the national norm for faculty in the field, according to a study published by the College and University Person-

nel Association in Washington, D.C. CUPA figures are for public institutions with collective bargaining agreements. Eastern was one of 278 institutions participating in the study. Eastern's 1989-1990 internal budget shows a range of \$33,624 to \$60,003 for nine-month, full-time faculty salaries - including all ranks - in the accounting, data processing and finance department. The bottom salary in that department is above the all-rank averages for 14 other departments at Eastern, according to the internal budget figures. And the three departments composing the Lumpkin College of Business rank first, second and third for average faculty pay at Eastern. "I'm appalled," said Richard Sylvia, an assistant professor of English who serves on Eastern's Faculty Senate. "I don't resent anyone making the national average for their discipline, but I think that it's unfortunate that it's at the expense of the other departments and the other disciplines." Charles Colbert, Eastern's associate vice president for academic affairs, said he could not respond to the contentions by Sylvia and other faculty members that too much emphasis is being placed on the Lumpkin College of Business and that other disciplines are suffering as a result. He did say, however, that salary disparities between departments in the Lumpkin College of Business and the rest of the university reflect the relative youth of the business departments. Colbert said faculty in the col-

### HOW EASTERN DEPARTMENTAL SALARIES STACK UP

THE TOP FIVE	THE BOTTOM FIVE
1.) Department of Accounting, Data Processing and Finance; Lumpkin College of Business. Eastern average: \$48,626 Range: \$33,624 to \$60,003 †National average: \$46,777 Difference: +4.02 percent.	29.) Department of Home Economics; Applied Sciences. Eastern average: \$30,805 Range: \$17,325 to \$47,763 National average: \$38,364 Difference: -19.7 percent.
2.) Department of Management and Marketing; Business. Eastern average: \$45,192 Range: \$25,785 to \$58,383 National Average: \$45,262 Difference: -.15 percent.	30.) Foreign Language Department; Liberal Arts. Eastern average: \$30,485 Range: \$18,000 to \$46,197 National average: \$40,874 Difference: -25.41 percent.
3.) Department of Business Education and Administrative Information; Business. Eastern average: \$38,738 Range: \$34,848 to \$41,661 National average not available.	31.) Theatre Arts Department; Fine Arts. Eastern average: \$30,309 Range: \$19,800 to \$45,765 National average: \$38,538 Difference: -21.35 percent.
4.) Department of Educational Administration; College of Education. Eastern average: \$38,499 Range: \$31,500 to \$46,161 †National average: \$41,916 Difference: -8.15 percent.	32.) Department of Journalism; Liberal Arts. Eastern average: \$30,183 Range: \$19,629 to \$37,638 ††National average: \$38,262 Difference: -21.11 percent.
5.) Math Department; Liberal Arts. Eastern average: \$37,471 Range: \$28,872 to \$50,670 National average: \$42,911 Difference: -12.67 percent	33.) Department of Health Studies; HPER. Eastern average: \$28,885 Range: \$17,973 to \$36,936 National average not available.

† national figure for "accounting" faculty.  
 †† national figure for "communications" faculty.

Sources: 1989-90 Internal Budget for Eastern Illinois University and the College and University Personnel Association, Washington, D.C.

See page 2 for the rest of departmental salaries and explanation of figures.

## Union negotiations still on hold

Eastern's faculty union and the Board of Governor's may resume negotiations later this week on a pay increase for Eastern faculty members, who are among the lowest paid in the nation. The two sides have not yet met this week and been unable to reach an agreement on a pay hike for teachers since early July. BOG spokeswoman Michelle Brazell said Tuesday that Eastern home economics professor Jayne Ozier, who heads Eastern's union, would be in Springfield Wednesday to meet briefly with BOG negotiators. "It would be safe to say that they are getting back together Wednesday evening," Brazell said. Ozier could not be reached for comment. Eastern faculty members have been working under an old contract since Aug. 31, after the two

sides were unable to reach an agreement on the salary clause for faculty contracts. The union, the University Professionals of Illinois, have been bargaining for a pay hike to match the cost of living, which is about 4 percent. Last year, faculty were awarded an overall 9.94 percent salary increase. The BOG though, has reportedly offered faculty a pay hike that ranges only between 1.9 and 2.1 percent. Mitch Vogel, the union's statewide president, threatened last week that faculty would organize an informational picket if an agreement was not reached by the end of last week. The union however, has not yet held a picket on campus.

♣ Continued on page 2

- Staff report

## HOW EASTERN DEPARTMENTAL SALARIES STACK UP

The following is a ranking of departments based on faculty pay. The rankings are based on average pay within each department. Figures are for full-time faculty only, and include professors, associate professors, assistant professors and instructors. A salary range for each department is also included. National faculty averages are for all ranks within each department at public institutions with collective bargaining agreements. Faculty members who do not earn at least 95 percent of their pay from a single department have been excluded from calculations. All salaries represent nine months.

6.) Botany; Liberal Arts.  
Eastern average: \$37,227  
Range: \$27,000 to \$45,891  
†† National average: \$44,622  
Difference: -16.57 percent.

7.) Department of History;

College of Liberal Arts and Sciences.  
Eastern average: \$37,224  
Range: \$25,650 to \$45,999  
National average: \$45,226  
Difference: -17.69 percent.  
8.) Political Science Department; Liberal Arts.  
Eastern average: \$37,054  
Range: \$26,100 to \$46,827  
National average: \$43,798  
Difference: -15.39 percent.  
9.) Department of Elementary and Junior High Education; Education.  
Eastern average: \$35,988  
Range: \$24,588 to \$45,054  
† National average: \$41,916  
Difference: -14.14 percent.  
10.) Department of Secondary Education and Foundations; Education.  
Eastern average: \$35,791  
Range: \$26,581 to \$45,000  
† National average: \$41,916  
Difference: -14.61 percent.  
11.) Economics Department;

Liberal Arts.  
Eastern average: \$35,529  
Range: \$30,600 to \$47,070  
National average: \$43,430  
Difference: -18.19 percent.  
12.) Music Department; College of Fine Arts.  
Eastern average: \$35,366  
Range: \$19,800 to \$45,621  
National average: \$40,683  
Difference: -13.06 percent.  
13.) School of Technology; College of Applied Sciences.  
Eastern average: \$35,103  
Range: \$20,349 to \$49,275  
National average not available.  
14.) Physics Department; Liberal Arts.  
Eastern average: \$35,087  
Range: \$27,450 to \$45,549  
National average: \$45,635  
Difference: -23.11 percent.  
15.) Educational Psychology and Guidance; Education.  
Eastern average: \$34,934  
Range: \$27,000 to \$47,457  
National average not available.

16.) Chemistry Department; Liberal Arts.  
Eastern average: \$34,542  
Range: \$20,520 to \$42,354  
National average: \$46,309  
Difference: -25.40 percent.  
17.) Department of Physical Education; College of Health, Physical Education and Rec.  
Eastern average: \$34,246  
Range: \$23,463 to \$36,936  
National average: \$40,135  
Difference: -14.67 percent.  
18.) Speech Communication Department; Liberal Arts.  
Eastern average: \$34,234  
Range: \$18,000 to \$47,952  
National average: \$38,262  
Difference: -11.37 percent.  
19.) Zoology Department; College of Liberal Arts.  
Eastern average: \$33,868  
Range: \$17,703 to \$45,900  
†† National average: \$44,622  
Difference: -24.10 percent.  
20.) Sociology-Anthropology Department; Liberal Arts.

Eastern average: \$33,622  
Range: \$24,840 to \$37,503  
National average: \$42,844  
Difference: -21.52 percent.  
21.) Art Department; Fine Arts.  
Eastern average: \$33,429  
Range: \$19,584 to \$44,109  
National average: \$39,306  
Difference: -14.95 percent.  
22.) Geology Department; Liberal Arts.  
Eastern average: \$33,289  
Range: \$20,760 to \$44,145  
National average: \$44,992  
Difference: -26.01 percent.  
23.) Philosophy Department; Liberal Arts.  
Eastern average: \$33,225  
Range: \$25,650 to \$41,724  
National average: \$43,376  
Difference: -23.4 percent.  
24.) English; Liberal Arts.  
Eastern average: \$33,123  
Range: \$17,046 to \$52,938  
National average: \$41,245  
Difference: -19.69 percent.  
25.) Psychology Department;

Liberal Arts.  
Eastern average: \$32,278  
Range: \$28,000 to \$46,377  
National average: \$43,205  
Difference: -25.29 percent.  
26.) Department of Recreation and Leisure Studies; HPER.  
Eastern average: \$31,620  
Range: \$22,617 to \$38,268  
National average not available.  
27.) Communication Disorders and Science; Liberal Arts.  
Eastern average: \$31,537  
Range: \$24,340 to \$37,773  
National average not available.  
28.) Department of Special Education; Education.  
Eastern average: \$30,969  
Range: \$22,500 to \$40,005  
National average: \$41,322  
Difference: -25.05 percent.

† national figure for "education" faculty.  
†† national figure for "life sciences" faculty.

## FROM PAGE ONE

### Cellar dwellers

• From page 1

lege of business departments have, for the most part, been hired in at higher rates because they have come to the university "during the better (contract) years" of late.

"It's a younger faculty and they are paying what they have to pay to get somebody in there," said Colbert, who is also the chairman of a Board of Governors commission studying faculty pay. "We are not paying someone \$1,000 more than they are asking for; I can guarantee you that."

On the other end of the spectrum, faculty in Eastern's geology department do the worst when compared to their national peers. With an average salary of \$33,289, faculty members there fall 26.01

percent below the national average for those teaching in their field. The national average for all ranks in geology is \$44,992.

Aside from accounting, data processing and finance, there are only two departments in the university where the averages for faculty pay fall within 10 percent of the disciplinary national averages.

They are: the department of management and marketing, where the average of \$45,192 falls .15 percent below the national norm, and the department of educational administration, where the average of \$38,499 falls 8.15 percent below the national norm for "education" faculty, according to the CUPA study and Eastern's internal budget figures.

There are 11 Eastern departments where faculty are averaging at least 20 percent less than their national disciplinary peers.

Among those 11 departments, faculty teaching in the sciences seem to be faring especially poor.

Along with geology, faculty in the physics, chemistry and zoology departments are all averaging between about 23 and 25 percent less than their national peers, according to Eastern and CUPA figures.

Colbert said faculty in most humanities are underpaid nationwide because "salaries are all market-driven," and higher education trends "have been away from those areas, but it's going back the other way now."

### Fraternity linked

• From page 1

staff member to visit the chapter prior to or during the IFC-designated fall rush period.

11. The chapter must contact the general fraternity's national headquarters and attempt to arrange for a national staff member to visit the

chapter before November.

12. The chapter president must meet with the assistant director of student activities/greek affairs once every two weeks to discuss the chapter's progress.

If the Office of Student Activities finds that the fraternity has broken any of the sanctions or Eastern's

student conduct code, which bars all hazing activities, the fraternity could lose its status with the university permanently, Judicial Affairs Officer Keith Kohanzo said.

Kohanzo said a decision will be made "as soon as possible" and that the fraternity "shouldn't be left in limbo."



### LADIES NIGHT

75¢ Rail Drinks

50¢ Coolers

20 oz Jumbo Drafts 75¢

LIVE BANDS FRI & SAT

## The Daily Eastern News

The Daily Eastern News is published daily, Monday through Friday, in Charleston, Illinois, during fall and spring semesters and twice weekly during the summer term except during school vacations or examinations, by the students of Eastern Illinois University. Subscription price: \$24 per semester, \$10 for summer only, \$44 all year. The Daily Eastern News is a member of the Associated Press which is entitled to exclusive use of all articles appearing in this paper. The editorials on Page 4 represent the majority opinion of the editorial board, all other opinion pieces are signed. The Daily Eastern News editorial and business offices are located in the North Gym of the Buzzard Educational Building, Eastern Illinois University, Second class postage paid at Charleston, IL 61920. ISSN 0894-1599. Printed by Eastern Illinois University, Charleston, IL 61920. Postmaster: Send address changes to The Daily Eastern News, Room 127, Buzzard Educational Building, Eastern Illinois University, Charleston, IL 61920.

### NEWS STAFF

Editor in chief .....David Lindquist  
Managing editor .....Cathy Podwojski  
News editor .....Jeff Madsen  
Assoc. news editor .....Charla Brautigam  
Editorial page editor .....Mike Brown  
Activities editor .....Evette Pearson  
Administration editor .....Susan Thomas  
Campus editor .....Lori Higgins  
City editor .....Bob McKee  
Student govt. editor .....Rudy Nowak  
Features editor .....Laura Durnell  
Photo editor .....Thom Rakestraw  
Assoc. photo editor .....Eric Fultz  
Sports editor .....Chris Boghossian

Verge editor .....Amber Grimes  
Assoc. Verge editor .....Debbie Carlson  
Art director .....Mark Randall  
Senior reporter .....Tony Campbell  
Senior reporter .....Cam Simpson  
Advertising mgr. ....Shanda Bishir  
Sales mgr. ....Denita Thompson  
Promotions mgr. ....Eileen Pawlak  
Major accounts exec. ....Heather Flood  
Student bus. mgr. ....Amy Dewey  
Business mgr. ....Glenn Robinson  
Editorial adviser .....John Ryan  
Publications adviser .....David Reed

### NIGHT STAFF

Night editor .....Cathy Podwojski  
Asst. night editor .....Charla Brautigam  
Sports editor .....Chris Boghossian  
Photo editor .....Eric Fultz  
Copy desk .....Tony Campbell,  
David Lindquist

## ONE GOOD DEAL DESERVES ANOTHER.

### GREAT TAKE-OUT JUST \$6.95

Now at Monical's, get a Large (16")  
Thin Crust Cheese & Sausage Pizza  
to go for just \$6.95 plus tax.

Offer good on Carry-Out  
7 Days a Week  
at participating stores.  
Expires 9/30/90.



Also available  
with a 2-Liter Bottle of Pepsi  
for just \$1.49 additional.

Charleston • 348-7515



Present coupon when paying.

### "BACK TO SCHOOL" BUDGET PLEASER

- ✓ Large Thin Crust Sausage Pizza
- ✓ Family Size Garden Salad and
- ✓ One 2-Liter Bottle of Pepsi

**\$10.95** plus tax

Offer good on Carry-Out  
7 Days a Week  
at participating stores thru 9/30/90.

Charleston • 348-7515



Present coupon when paying.

## Cable TV costs may decrease with new bill

By LAURA DURNELL  
Features editor

Consumers in Central and Southern Illinois may see better cable television service and lower rates due to a cable television bill recently passed in the U.S. House of Representatives.

"Citizens from Central and Southern Illinois approached Congressman Bruce and said they were having problems," said Mike Casey, press secretary for U.S. Rep. Terry Bruce, D-Illinois. "However the complaints also have been across the country."

Among the consumer complaints are poor service quality, rapidly rising rates and lack of choice among cable companies.

When cable television became readily available a decade ago, many state and local governments gave cable operators rights to operate within certain areas.

Officials during the Reagan administration said "price-gouging" would not become a problem due to alternative modes of technology, such as home video cassette recorders and satellite television. Officials added this would not inflate customer rates and would improve service.

Casey said, competition failed to materialize, causing rates to balloon by more than 40 percent during the past three years.

"There has been a national price increase and we have encountered widespread cable complaints," Casey said.

"While most cable operators provide solid service for their communities, little can be done under the current law to those who price-gouge consumers," Bruce said in a press release.

The bill gives the Federal Communications Commission the power to monitor fees and decide maximum rates for basic service.

The FCC is also required to identify abusive rates for syndicated cable-owned programs such as MTV and the CNN. Pay-cable channels such as Home Box Office and Showtime would not be affected.

Poor service of the actual programming delivered to customers is another pertinent problem.

"Speed, cost of repairs and not getting what they (the consumers) pay for are a few of the problems," Casey said.

While the bill is in response to complaints taken by Bruce, Casey said the House is trying to set the policy for the whole United States.

"The bill address problems similar throughout the country, the same as central Illinois," Casey said.

# Rives stresses need for campus effort

By TONY CAMPBELL  
Senior reporter

Eastern President Stan Rives touched on several aspects of the Task Force for Enhancing Minority Participation Tuesday, but he stressed one point — it must be a campus-wide effort.

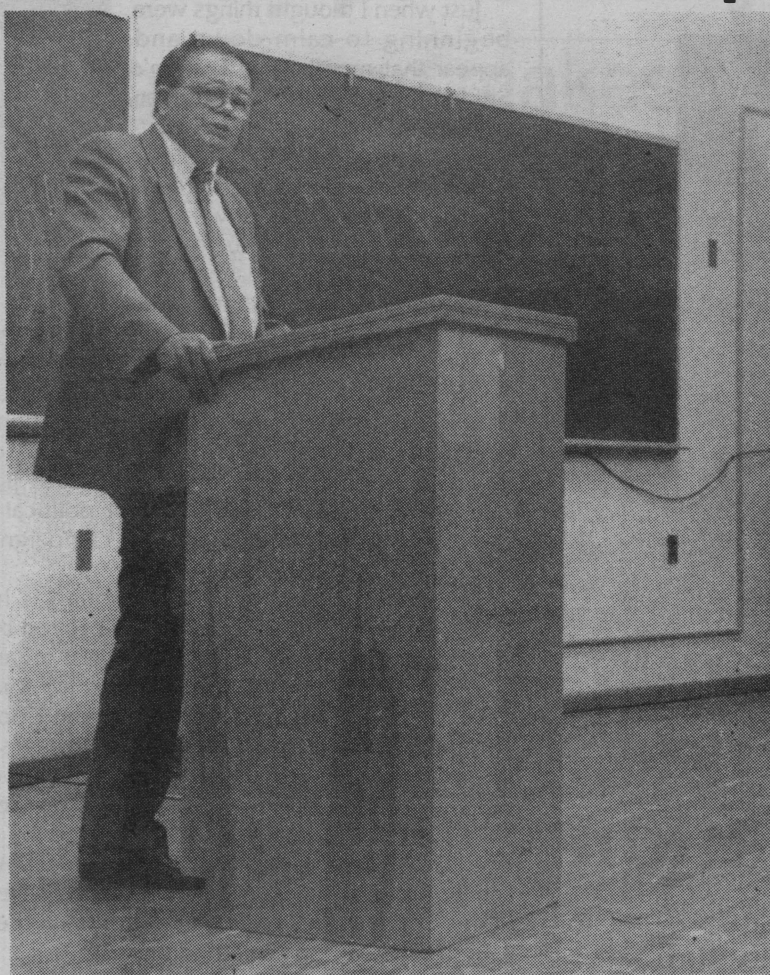
"You know that I am proud of Eastern, but I am not proud of the fact that the minority student enrollment is the lowest among the 12 public universities in Illinois," he said. "We can, must and will do better."

The task force, commissioned by Rives in January to study how Eastern can improve minority involvement, presented 158 recommendations Monday in a report that was published with *The Daily Eastern News*. The recommendations have been reviewed by the President's Council and will be assigned throughout the university for implementation.

Among the recommendations are ways to improve the campus climate and methods to increase minority enrollment.

"I invite, welcome and require your support," Rives told the crowd of about 120 students and faculty members in the Coleman Lecture Hall Tuesday afternoon. About 35 Eastern faculty members were assigned to the task force.

Each group or individual is required to submit to the council a memo by Nov. 15 reviewing the initial recommendations, telling



ERIC W. FULTZ/Assoc. photo editor  
Eastern President Stan Rives explains results from the study done by a university minority task force.

how they should be implemented and what kind of cost factor is involved. A steering committee will review and prioritize the recommendations.

"This president is committed

with vigor and purpose to creating a campus community with all deliberate speed which welcomes students, faculty and staff from all racial backgrounds," Rives said.

Rives added everyone will bene-

fit from a more culturally diverse campus, not just minorities.

Eastern mathematics professor Louis Coon told Rives that he reviewed the information in the report and noted many of the recommendations required funding. "Some of them don't cost money," he added. "Those should be the priority."

Coon added by having an open atmosphere on campus, such as through lounges, better communication could be established between minority faculty members and the rest of the faculty.

Shirley Moore, dean of academic development and a task force member, disagreed with Coon's statement that recommendations should be prioritized in relation to funding. She acknowledged though, that finding the funds to supplement the recommendations would be a difficult task.

Moore said the biggest obstacle facing the improvement of Eastern's minority participation is improving the campus climate. "It's hard to change the hearts and minds of people," she said.

Johnetta Jones, director of student minority affairs and a task force member, said Eastern's climate is not as bad as other universities', but it still could be improved.

"We've been very fortunate not to have had any incidents," she said. "But that doesn't mean we don't have our stresses and strains."

## City Council OKs another parking proposal

By MIKE CHAMBERS  
Staff writer

The Charleston City Council approved a resolution Tuesday night that eventually should pave the way to widen Madison Avenue and Route 316 and add additional parking uptown.

The resolution — a compromise of sorts between the city of Charleston and the Illinois Department of Transportation — will transfer ownership of sever-

al parcels of land along the south side of Madison Avenue and at Fifth, Sixth and Seventh streets.

Currently, the city owns the land south of Madison Avenue and a parcel between Sixth and Seventh streets that is used as a parking lot. The city agreed to relinquish its rights to a 17-foot-wide section of the lot along Madison Avenue, however, so IDOT can widen Illinois Route 316 in that area sometime in

May of 1991.

In return, IDOT plans to give the city one of three buildings to be bought jointly with the city, the Clodfelder Appliance and Repair store. Once that is cleared away, additional parking spaces will be added. The other two buildings to be bought are a Boatmen's Bank storage facility and a building that once housed Sonlight Fitness Center, which has moved to Seventh Street.

City engineer Mark Dwiggins

said IDOT currently is negotiating the purchase of the buildings.

In related action, the city authorized IDOT to go ahead with improvements to traffic signals at the Lincoln Avenue intersections of Fourth Street, Sixth Street and Seventh Street.

The improvements involve installing detector "loops" in the pavement which are activated by cars, thereby changing the lights automatically.

## Alumni-Through-Telefunds report presented to senate

By RYAN CUNNINGHAM  
Staff writer

Stephen Falk, Eastern's vice president for development, gave the Faculty Senate a report Tuesday on the results of last year's Alumni-Through-Telefunds campaign, which raised \$190,000 from soliciting alumni.

The program, used by Eastern in the past four years, also solicits funds from the friends and parents of Eastern students.

Falk did acknowledge that he wasn't totally satisfied with last year's program, citing a computer breakdown in his department. Because of the breakdown, Falk said his staff did not have a chance to use existing alumni information to organize the program.

He did say despite the computer difficulties, the campaign had its most successful year, raising \$50,000 more than two years ago.

However, total revenue was less than the total revenue of two years ago by approximately \$20,000. One reason for that, Falk said, was because of a higher number of pledge defaults that accounted for more than \$90,000 left unpaid by donors.

Falk and Assistant Vice

President for Development, Arthur Rathjen, who was also at the meeting, said another reason the lower total revenue was because the department contracted an external telemarketing firm.

"The firm we used was thorough and did a good job but was too expensive as a good, long-range system," Falk said.

Besides external telemarketing, the other two program options for each college to choose from are student and faculty volunteer callers and paid student callers.

Falk wanted to make it clear to the Faculty Senate that he wanted to "maintain a degree of honesty in fundraising campaigns," but wasn't able to make any projections on this year's program because there were too many variables involved.

Robert Pringle, the Board of Governors' vice chancellor for academic affairs, was scheduled to address the senate with his research on the age increase of college students. However, he was unable to attend the meeting.

In other business, a motion was passed by a majority vote to rescind last Tuesday's 9-3 vote in favor of the mail-in ballot election process.

## Kracker's hearing postponed until late November date

By BOB McKEE  
City editor

The attorney for E.L. Kracker's, 1405 Fourth St., has been granted a continuance on a hearing before the Illinois Liquor Commission and will appear in late November to answer charges of violating Charleston's liquor ordinances.

Ken Keating, the owner of Kracker's, was scheduled to appear before the three-member panel Wednesday to appeal the charges.

The charges — serving alcohol to a minor — stemmed from a March 9 sting operation by Charleston Police. Twelve out of 14 bars investigated were charged with serving alcohol to a minor as a result.

Keating said the hearing was postponed "because we got a continuance," but would not comment further. Charleston City Attorney Brian Bower and S. John Muller, the attorney for E.L. Kracker's, could not be reached for comment Tuesday.

Keating's hearing before the commission is now scheduled for Nov. 28 in Springfield. Then, he and Muller have the burden of

proving wrong information was used against the bar in the investigation and previous liquor hearings with Lanman.

In a set of hearings on March 19 and 23, Lanman, acting as local liquor commissioner, reviewed information of how the bars served a 19-year-old Eastern student alcohol while he was acting as a police informant.

Both bartenders and the owners of the bars were charged after the informant entered the bar and purchased a beer while an undercover police officer watched. Uniformed police officers returned later to charge the bartenders who served the informant. The owners were cited later that week by Lanman.

During the March hearings, the owners who pleaded guilty received one-week suspensions from selling alcohol. Keating was the only bar owner who pleaded innocent.

Bower said previously that Keating is trying to prove entrapment was used during the sting operation, and that no chemical analysis was completed on the drink the student bought, which in the hearing was described as beer.

**OPINION**

**4**

page

Editorials represent the opinion of the editorial board. Columns are the opinion of the author.

WEDNESDAY • SEPTEMBER 19 • 1990

**Campaign aids efforts to fund good education**

President Rives wants to raise \$20 million for Eastern Illinois University through its "Second Century Campaign." We can only hope Eastern is as successful with this campaign as it was with the Tenth Decade Campaign, which raised more than \$5 million.

The present campaign has already brought in \$11.5 million, including the \$5 million from the Tenth Decade Campaign.

With budget battles and legislators never quite giving enough money for education, it is important that universities take the initiative in getting the money they need to maintain and build on a quality program.

According to Rives, only 38 percent of Eastern's budget comes from tax money. It's not the university's fault. Rives can only ask for the money. But it's very smart to take the matter into his own hands in order to provide funding in areas that the state doesn't give much help. The money raised will help, among other things, education programs, scholarships and Booth Library acquisitions.

Eastern is a college of quality. A survey in a recent issue of Money magazine listed the top 100 colleges with the best education for the money. Eastern was listed at 73. The University of Illinois was the only other Illinois school listed.

What might this do for future Eastern funding? There is the danger that legislators will look at Eastern and say we have a quality program, let's get the other schools up to their level. Eastern funding could possibly stall.

Eastern isn't a top-notch school yet. It's getting closer all the time, though. This is a vital time for funding. The money the school gets from the state isn't going to be enough to put Eastern over the top.

President Rives wants Eastern to be a top-notch college. It's good that the initiative is there to reach that goal, because without it, under the funding provided by the state, Eastern would never be able to provide a good education for the money.

**TODAY'S QUOTE**

**"We are progressively more a state-assisted rather than a state-supported institution."**

*Stan Rives*

Senate Circus is on the air. Just when I thought things were beginning to calm down and appear that members of Eastern's Student Senate were acting even halfway reasonably, they've managed to once again prove just how nonsensical some of them really are. And those clowns just may wind up to be our future state representatives, maybe even a governor - that's what scares me most.



**Jeff Madsen**

Last week, two campus "organizations" asked the senate's approval to be officially recognized as student organizations. One of the groups, Students for Edgar, exists to "inform students about gubernatorial candidate Jim Edgar's ideals and views." That's a pile of political hogwash. Students for Edgar is an organized campaign for Edgar, who is a former Eastern student.

That group, which ironically enough is headed by Senate Speaker Kristy Koch, was approved by the senate and is now recognized as an official organization.

Another group though, Students for Ryan, didn't have such luck. That group, led by the opposition of senate member Brian Moushon, got a surprising thumbs down. Students For Ryan, which would have essentially done the same thing, was not recognized. That group, ironically enough, is led by Board of Governors Representative Brett Gerber. When the senate met last week, Moushon, who has been known for his ironies, said "I honestly don't think there should be a group that runs a campaign."

Who is he trying to kid? Students for Edgar, now that it is recognized, will banter around campus "educating" us about Edgar's gubernatorial platform. At Organization Day in the Union Tuesday, Edgar's son Brad was at the Students For Edgar booth to tell all of us about his dear ol' dad.

"He is the campaign liaison for all the campus universities in Illinois," said Kristy Koch.

Well there, she said it herself. Brad Edgar is a campaign liaison. He was there as a representative for the Edgar campaign. Students for Edgar then, is a campaign group - plain and simple.

But then in some twist of logic, Students for Ryan, which does the exact same thing, cannot be a recognized organization because, like Moushon theorizes, "I don't honestly think there should be a group that runs a campaign."

If I ran the Ryan campaign, I wouldn't worry about senate recognition anyway. Who needs it? The First Amendment allows anyone to campaign on campus regardless of what Eastern's administration or the student senate think about it.

But back to the issue at hand - as ridiculous as it is. Read between the lines and you'll see that there are clearly some personality problems here. And some senate members will acknowledge that. And maybe there should be; it seems that's what American politics thrives on these days. But then, those who thrive most are the representatives, not necessarily those who are represented. Several senate members end up working summer internships for those candidates, which may partly explain their rationale for starting a campaign group on campus for their bosses.

But whose interests are they really thinking about then?

Moushon is the same senate member who in the elections last spring criticized the senate for its irresponsibility and said "I feel that students must face the reality that student government doesn't serve the students to its best ability in its current form ... I don't feel they represent the views and needs of the student body."

Well thanks Brian, you and your colleagues have done well in proving that to all of us.

- Jeff Madsen is news editor and a regular columnist for The Daily Eastern News.



**Guest viewpoint**

**The Daily Illini**

**Fans shouldn't bring botas to games**

Time to hide those botas on Saturdays - they just made the University of Illinois' hit list of items prohibited from Memorial Stadium.

But leaving botas at home is not a bad idea - it should actually cut down on alcohol abuse at football games, as well as alcohol-related fights inside the gates of the stadium.

According to U of I Police Capt. Frederick Kallmayer, the prohibited items are cans, glass bottles, hard or soft coolers, backpacks and now botas. Some of these can cause physical damage if thrown in anger or joy, but the contents of all of those can do physical damage anytime, if taken in excess.

And that's just what the university has set out to prevent. The Department of Intercollegiate Athletics has laid out some suggestions for vendors and patrons at tailgate parties. These policies, which are not official regulations, ask vendors to check patrons identification, limit the amount of alcohol sold, stop selling alcohol 30 minutes before game time and make food and non-alcoholic beverages available to patrons.

The DIA's suggestions are the proper way to cut down on alcohol abuse and consumption outside the stadium. They are a good middle ground, falling

between enforceable rules and alcoholic anarchy. These policies, if taken to heart, should reduce violent, alcoholic-related incidents inside the stadium, as well as cut down the number of students and alumni who drink themselves sick. And by making suggestions and not rules, the university is freeing police for more important duties than random crackdowns on violators outside the stadium. The university is also showing its desire to control alcohol abuse on campus, a welcome attitude anywhere.

But the need for these suggestions is indicative of a much larger problem of alcohol abuse on campus. Campus studies on drinking and acquaintance rape show that something has to be done to solve the abuse problem on campus.

Students and alumni should not have to smuggle their precious beer and botas into the game to have a good time. Memorial Stadium was built to house a football team - not thousands of drunk fans.

Partying hard before a big school event is fun, but should not be carried into the football arena. Take the DIA's advice, and keep alcohol out of the stadium. Too many drunk people in a confined space like the stadium is just asking for trouble.

## Taylor Hall to present 'stupid tricks'

By **STACIE FICEK**  
Staff writer

All students who can make a funny face, stop a fan with their tongues, or play "Yankee Doodle Dandy" on their noses may want to show off their talents Wednesday night in the Taylor Hall lobby.

At 7 p.m., the hall will sponsor "Stupid Student Tricks," a spinoff of "Late Night" talk show host David Letterman's "Stupid Human Tricks."

Mary Krones, a Taylor Hall resident assistant, said the first-place winner will receive a \$50 gift certificate from the Cross County Mall in Mattoon. The second-place winner will receive a \$30 gift certificate from E.L. Kracker's and the third-place winner will receive a \$20 gift certificate from Boomers W/ A Twist. Prizes will be given out by five residence hall counselors.

Krones said anyone is welcome to participate and she expects a good turnout. Acts should be "kept clean" and limited to five minutes.

Door prizes also will be handed out for spectators.

# Organization Day pulls many to Union

By **RYAN CUNNINGHAM**  
Staff writer

About 32 campus organizations participated in Organization Day Tuesday, hoping to attract new members and draw campus-wide attention.

The event, held in conjunction with the open house for the Martin Luther King Jr. University Union, proved to be a benefit for most organizations. The extra traffic in the Union drew additional attention to their booths, which were set up in the Union Walkway and the University Ballroom.

Student government Vice President Martha Price, who coordinated Organization Day, was pleased with campus participation and student response. "There was a good turnout," Price said. "We had some groups call at the last minute to participate, but I was glad to let them."

Brett Gerber, Eastern's Board of Governor's representative and the chair for the Students for Ryan group supporting George Ryan as candidate for Secretary of State, said combining the two activities in the Union proved to be beneficial for his group.

"Martha's strategy was to have it in the Union this year because of the cold weather and so it would get some of the traffic from the open house," Gerber said.

## Edgar's son makes Eastern visit

By **CHARLA BRAUTIGAM**  
Associate news editor

Organization Day served as a homecoming for Brad Edgar, who returned to Charleston Tuesday to campaign for his father, gubernatorial candidate Jim Edgar.

Brad, who serves as the campaign liaison for many Illinois universities, was invited by organizers of Students for Edgar to hand out campaign literature about his father, the current Secretary of State.

"It's (campaigning) a good experience," Brad said Tuesday. "You meet a lot of interesting people."

However, he didn't meet as many new people Tuesday as he did old friends. "It's kind of funny," he said. "I saw a lot of friends."

Brad, who was born and raised in Charleston up until fifth grade, is no stranger to Eastern — especially since his father attended school here.

He added that advertising, word of mouth and having the event each year results in more students expecting the activity to happen, which results in larger crowds.

One of the more popular tables at the event was the Black Student



**K. TREVARTHAN** Staff photographer  
Eastern student Tom Faulkner speaks with Brad Edgar Tuesday in the Union.

"I used to ride my bike up and down the sidewalks," Brad said. "I know my way around campus fairly well."

However, his familiarity with

Eastern's campus was not enough to make him go to school here.

Brad opted to attend Colorado State University where he majored last year in economics.

"It's kind of nice to go where no one knows who your dad is," he said of the decision to attend Colorado State. He added the need for anonymity kept him from entering politics like his father did. "I've been in it (politics) for 22 years. In November, I retire."

Edgar, who recently campaigned at the University of Illinois, said he hopes to make similar appearances at Northern, Western and Southern universities.

However, before he made that trek with his travel organizer and friend, Brad Alewelt, a 1990 Eastern graduate, Brad plans to spend a little time with his family.

Last night Brad planned to visit his grandmother who still lives in Charleston. He then planned to spend the night in Springfield with his parents.

## Riordan makes plans to veto Senate's recognition refusal

By **ANITA MAIELLA**  
Staff writer

Student Body President Dan Riordan said Tuesday he will veto a Student Senate action last week that refused to grant recognition to a group supporting George Ryan as the Republican candidate for Secretary of State.

The senate meets at 7 p.m. Wednesday in the Arcola-Tuscola Room of the Martin Luther King Jr. University Union.

At a senate meeting last week, two groups, one supporting Ryan and one supporting Republican gubernatorial candidate Jim Edgar, went before the senate for recognition as campus organizations.

The Edgar group, called Students for Edgar, was approved. That group exists to "inform students about Jim Edgar's ideals and views" and is headed by Student senate Speaker Kristy Koch.

However, the Ryan group, called Students for Ryan, was rejected

after heated discussion because some senate members said it was serving primarily as a campaign group. Students for Ryan is headed by Board of Governors Representative Brett Gerber.

Campaigning is not outlawed in Eastern's Student Conduct Code and Riordan said he could see no justification for the group not being approved, since it had met requirements outlined senate bylaws.

Riordan said he will veto the rejection motion and put the group's recognition back on the floor for approval.

"They (senate members) don't have the right to hold up an organization if it meets the requirements," Riordan said. "What they did was something they either didn't know or they were acting on their personal interests and vendettas."

Riordan said if the senate rejected the recognition, the senate's adviser, David Milberg, could ultimately intervene and grant recognition to Students for Ryan.



**KEN TREVARTHAN** Staff photographer

### Mad hatters

"The Hats" — Karen Slate, Lisa Taylor, Sherri Smith and Jackie Reynolds — record a song Tuesday in the Union as part of the daylong open house.

# International students get radio and television forum

By **ABBY KRAKOW**  
Staff writer

WEIU-TV and radio introduced a new program Tuesday that will spotlight the lives of Eastern's international students on radio and television.

Jerry Eisenhour, a representative from WEIU, announced the program at an International Tea sponsored by the Paris Women's Club. Eisenhour said the program will allow international students to talk on the air about their home countries.

"A lot of people here do not get the chance to understand what you are going through," Eisenhour said. "People do not know what type of individuals we have here."

In addition, Glenn Williams, Eastern's vice president for student affairs, wel-

**“**  
*The integration between all different countries is good. It is good for American students to know about foreign countries. I wish more American students would have come.*

### Eastern international student from Australia

comed the international students to Eastern, stressing people would always be here to help them. He also noted Eastern was one of the two Illinois universities chosen by *Money* magazine as one of the top 100 buys for a college education.

"I like meeting new students. It is a

time to meet foreign students. During other times they are not around," said Robert Austria, a student from India.

"The integration between all different countries is good. It is good for American students to know about foreign countries. I wish more American students would have come," added one student

from Australia.

Other topics announced were Homecoming events, such as the Homecoming parade. Those who wish to will help design the float and participate in the parade will wear the traditional clothes from their home country. Yearbook pictures to be taken of the international students also was discussed.

Yolanda Chels, co-president of the Paris Women's Club, said this month was the first time she had attended an International Tea, which is designed to allow international students to socialize with each other and with Eastern students.

"I think it is nice that different students get to meet and socialize," Chels said. The Paris Women's Club also sponsors a yearly Thanksgiving dinner for international students.

## Homeless children often face long road back to school and to survival

SPRINGFIELD, Mass. (AP) — On her first day back to school, 7-year-old Wanda colored a mimeographed counting exercise, ate a hamburger for lunch and took the No. 4 bus home — to a city shelter.

For Wanda, and for the thousands of other homeless children, just going back to school can be a lesson in survival.

"These kids have gone through a lot by the time they get into the classroom," said Michelle Linehan, director of the state Department of Education's Office for Education of Homeless Children in Boston.

"They're not homeless because they want to be," said Glenwood Elementary Principal Robert Kelliher, whose school is near the

motel-shelter where Wanda lives. "They want the same thing as other youngsters, a bed to sleep in at night ... a place to study, a place to play." As of November, 12,000 children were living in Massachusetts shelters, half of them school age, Linehan said. "That's only the numbers that we know of," she said.

The U.S. Department of Education estimated that at the end of last year, 200,000 of the 272,000 homeless children attended schools.

Problems facing homeless children range from ragged clothes and no place to study to poor self esteem.

## Department offers mock test

By SARA STEVENSON  
Staff writer

Eastern's English department will hold a preparation session Wednesday for students interested in taking the Graduate Record Examination.

The test is a standardized exam similar to the SAT and ACT and is given to students who plan to attend graduate school.

The session begins at 4 p.m. in Room 313 of Coleman Hall. Although registration for the actual test is \$35, no fee will be charged to attend the preparation session Wednesday.

The multiple choice test will cover two areas. The first area, titled general, con-

sists of verbal, quantitative and reasoning. The second portion will cover English and American literature. The multiple choice questions are formed from math and English textbooks. Calculators and dictionaries will not be allowed for assistance.

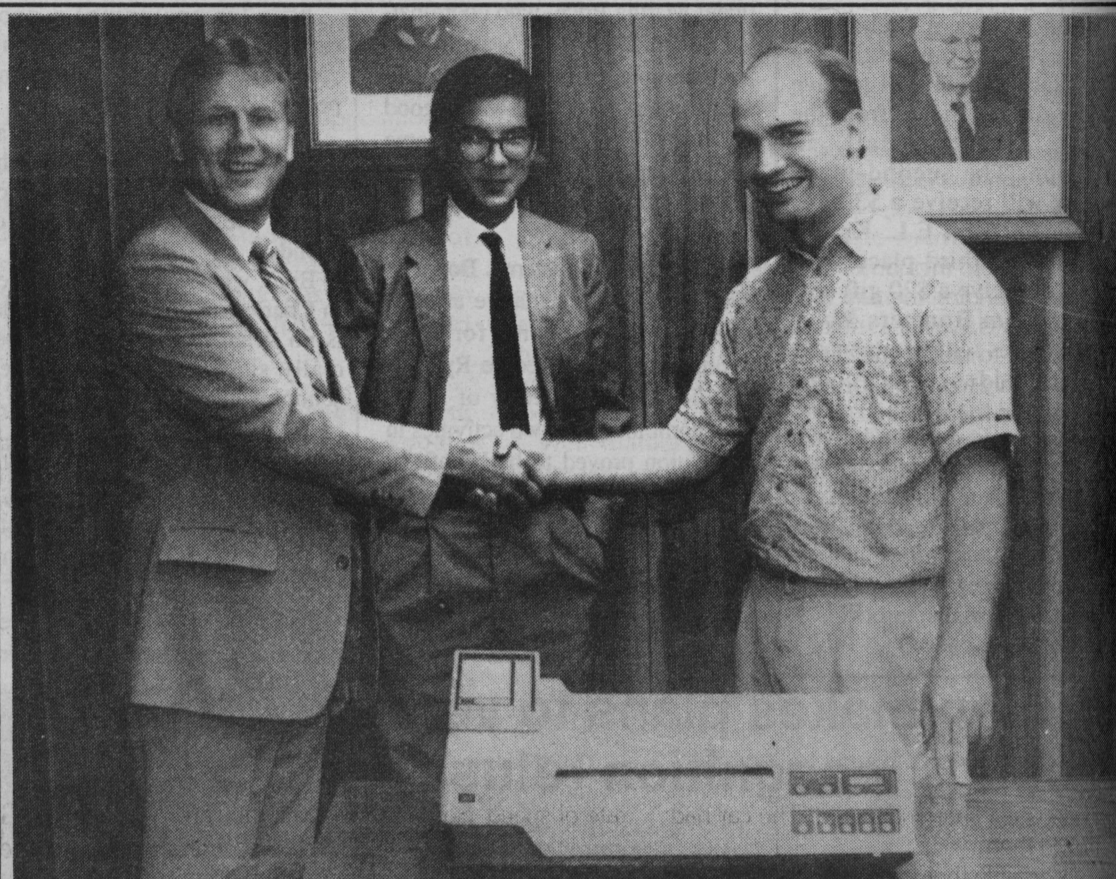
"The test, which is specifically geared for english majors, is going to try to give students a sense of what to expect. The GRE is designed to calm students' stress and encourage them to take practice tests," English Professor John Kilgore said.

"Many students have poor exam-taking skills."

# DISCOVER

# WHAT YOU WANT AND WHAT YOU NEED

Write for  
**The Daily Eastern News**  
**581-2812**



From left, Columbian Savings and Loan Division President Terry Hinkle, loan officer Michael Kuo and Daily Eastern News editor David Lindquist with the News' new fax machine.

**The Daily Eastern News** wishes to congratulate and thank **CHARLESTON'S COLUMBIAN SAVINGS AND LOAN** for its generous donation of a fax machine.

## The Women of Alpha Sigma Tau

would like to recognize those who achieved academic excellences in Spring 1990:



**4.0**

Rebecca Anderson



**3.5 & above**

Karla Crawford  
Shari Gordon  
Lynn Worshek

Valerie DeBaun  
Sue Reimer  
Dana Zilinski

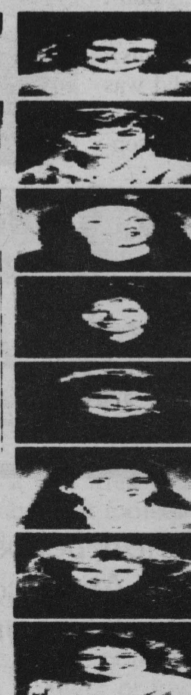
**3.0 & above**

Charlene Burris  
RaeAnn Cunningham  
Jennifer Halt  
Traci Lightbody  
Lisa Pierce  
Kellie Ryan

Betty Jo Coy  
Joanne Gugliotta  
Lydia Koeller  
Bridget Paulek  
Christina Roemer  
Adrienne Silence

Sharon Wozniak

**Congratulations!**



## Warbler 1991

# We're shooting you this week.

So be armed and make an appointment at 581-2816.

### Shooting Starts

Sept. 17-21 1p.m.-9p.m.

Sept. 24-27 9a.m.-9p.m.

**Breaking the Rules**  
**Warbler 1991**

In Neoga-Shelbyville Rooms on 3rd floor in Union  
\$5 sitting fee for seniors and \$3 for underclassmen



# A NEAR FLATLINER

An Eastern faculty member recalls glimpses toward 'the light beyond'

By  
Laura Durnell

For a moment, time was not the same. As a 19-year-old college student home for the summer, Barbara Walker was looking forward to a relaxing day at a softball tournament in St. Libory. That day almost came to a screeching halt for Walker and two of her friends in what probably should have been an inescapable car accident.

En route to the game, the girls' car stalled, stranding them in the middle of the road. As Walker's friend tried again and again to restart the car, Walker turned, only to watch a speeding car racing toward them less than 30 feet away.

Walker steeled herself for the impact, realizing there was no way out.

But Walker was wrong.

In a split second Walker found herself in the front seat of the car that was heading toward them, viewing her friend's car, which her friends and she were still inside.

"It was like I was a pair of eyes and a brain," Walker says.

Walker saw flashes of her life zip by her, and as soon as she viewed her fifth grade years she found herself back in Heddy's car safe and sound. The car had missed them.

"Certainly there are various theories (explaining what happened). I just know it felt very real to me," Walker says.

Walker believes she had a Near-Death Experience, or NDE as it is technically called. Walker has researched the unknown territory of what lies beyond for close to seven years, and in fact wrote her dissertation on it.

But even before Walker's research, these experiences were studied in the

1930s and brought more into light with Raymond Moody's 1975 book "Life after Life," which Walker believes was responsible for the increasing resurgence of these episodes.

"In it he had a number of different case studies talking about NDEs," Walker says. "Also described in the book was another type of NDE where a person, knowing death is eminent, will leave the body before actually death occurs, and that's what happened to me."

Autonomic and transcendental are the two types of these experiences. The most common is autonomic where a person hovers over his body and surroundings at a vantage point. However, the transcendental kinds seem to recur most commonly in the media and claim the most attention from society.

"A lot of times people may initially feel scared because they don't know that they're dead, but usually it's replaced by feeling of peace, euphoria; many times they don't want to go back," Walker says.

According to the people Walker has talked to, during the trip the person travels down a dark tunnel at an incredible rate of speed. Some say it is as if they are traveling through the universe to meet someone. A cone-shaped, warm, brilliant light usually radiates at the end of the tunnel; reaching the light is termed the Core Experience.

"Sometimes people equate the light with God or Jesus if they are Christian, other times people have called it a spiritual being," Walker explains.

A life review can happen then where every emotion felt at the moment is experienced, along with emotions that the

person made others around them feel.

Senses can become more acute, colors unable to be seen in the material world are visible and in a few cases deceased relatives, loved ones, pets or a pastel-colored entity greets the person. Some have said they gain instant knowledge and a form of telepathic communication with the being of light.

"One lady told me she was told the whole meaning of life, and she said it was very simple," Walker says. "She said the basic meaning behind life is to help people learn how to love one another."

When people return to their bodies, a deceased loved one, voice from nowhere or the being of light may order them to return. Sometimes the choice to return is made by the person himself, who may have a responsibility or unfinished business to attend to.

"Anytime you have an near death experience I think it kind of changes you, but especially the core experience," Walker says. "A lot of times people become less materialistic and they don't become quite so concerned what other people think about them or say."

While a Gallup Poll in 1982 showed one in 20 people had these experiences, skepticism remains. Walker says with the scientific method, the whole concept of life beyond death fell out of favor. Some doctors claim these images are due to chemicals or electrical surges in the brain, stress or drugs.

"I'll allow for the possibility, but I don't think there is any scientific evidence," says Robert Butts, assistant professor of home economics. Butts has taught the death and dying course at Eastern.

"I don't think there is anything wrong with a little healthy skepticism," Walker argues. "But with the thousands of people who have publicly testified to having this . . . there are too many similarities from a statistical standpoint."

In the past many people who have had the episodes were afraid to tell people about them, thinking they might be thought of as crazy.

"The whole area has come through the backdoor under the umbrella term parapsychology," Walker points out, adding some people who see the term associate satanism with it along with other taboo topics.

"It's too bad that's really the avenue it came back in. And the media - every soap opera character on earth I think has had a near-death experience," Walker adds.

Many times the experiences have been portrayed in the media as a terrifying journey that only brings pain or death when a person returns.

While Walker said they are not like this, not all experiences have been positive. A few are described as hellish or as Hell itself.

"I heard one person say they were in total isolation and that was their Hell," Walker says. "Another said they could see fire and smell flesh burning."

"I think for a long time no one talked about the negative experiences, so a lot thought they were all positive," Butts says.

Mostly these episodes have been positive experiences and now are being used in counseling for those who have lost those close to them.

## FREE Parking

(while we work on your car)

Free Inspections

Free Estimates

Free Parking while you're at class or work

## SAVE ON MIDAS EXPERT CAR CARE Oil & Filter Change

- Up to 5 qt. Penzoil 10W30 Oil
- Lubrication
- Refill underhood fluids
- Air Tires

**\$14.95\***

\* Most cars — diesels excluded

Reg. \$17.95

Offer good with coupon 9-31-90



NOBODY BEATS MIDAS



**John Inyart**

515 Lincoln Ave., Charleston, IL

**345-1114**

"Across from Old Main"

# ATHLETIC DEPT.

345-1200

Corner of  
4th & Lincoln

## 1st ANNIVERSARY SALE

"Thanks for Your Support"

Quilt-Lined  
EASTERN JACKETS

2-color letters  
Sewn-On-Back

**\$49.95**

ALL GEAR  
SPORTSWEAR

**15% OFF**

**EVERYTHING**

**IN THE  
STORE  
IS ON  
SALE!**

All  
CHAMPION  
SWEATSHIRTS  
**\$29.95**

ALL CHAMPION  
SPORTSWEAR  
**20-50% OFF**

WED 10-8 • THURS 10-8 • FRI 10-6



# Deathwish

## Syrian commander wants Saddam dead

HAFR AL BATIN, Saudi Arabia (AP) — The commander of Syrian troops in the Saudi desert described his men Tuesday as a buffer between the feuding Arab brothers of Arabia and Iraq, and said of Saddam Hussein: "I hope that he dies very soon." Gen. Mohammed Deeb Dhaher, opening his camp to reporters for the first time, said his battle-hardened commandos could shift quickly into offensive posture if their orders were changed.

"The Syrians are here for the defense of Saudi Arabia, but if they have to go for offense they will be ready," said Dhaher, who said all of his men have experience fighting in Lebanon.

The Syrians, who have photographs of President Hafez Assad at the entrance of their camp, are the fittest-looking and most experienced of all the Arab forces on the front lines in the multinational defense of Saudi Arabia. But their numbers are low pending reinforcements.

While several hundred of his colleagues jogged across the desert in formation, soldier Ramzi Salim said the Syrians would have no problem fighting with Americans if hostilities erupt with the Iraqi forces to the north in occupied Kuwait.

"Everyone in the world is against Saddam Hussein," Salim said.

"Kuwait will be Kuwait again." Nodding nearby was another commando, Mohammed Nosra, who said the Syrians were "proud to be in Saudi Arabia to defend the holy mosques and ready to stop any army that makes aggression against an Arab." Gen. Dhaher, wearing a skull and sword insignia on his uniform, nodded yes when asked if he would have fought with Iraq if Assad had ordered him to do so. "We are soldiers," he said, adding, "We would not have been as enthusiastic about our mission." Saddam and Assad head rival wings of the Baath Party. Prior to the invasion of Kuwait, Assad figured more prominently on the list of U.S. troubles in the

## Europeans renew resolve in Gulf crisis

By the Associated Press

European leaders displayed their strengthening resolve in the Persian Gulf crisis Tuesday, discussing the buildup of forces in the region, and the U.S. government indicated the toll the crisis has taken at home: soaring energy prices.

The flow of Kuwaiti refugees across the newly opened Saudi border thinned abruptly as news spread that Iraqi troops were seizing young husbands and sons from families as they tried to leave.

Refugees said the erratic manner in which the Iraqis were treating them appeared part of a harsh campaign to break down their will to resist.

International pressure on Saddam Hussein seemed to be increasing, with countries implementing diplomatic sanctions and alliances slowly shifting in the Middle East.

Syria and Iran announced that President Hafez Assad would visit Tehran next week. Assad was expected to try to persuade his Iranian allies to join the West and other Arab nations against Saddam.

Moscow and Washington have been trying to sway Iran from a possible alliance with

Mideast than did Saddam. U.S. administrations accuse Syria of harboring terrorists.

The Saudi government the past month has been taking reporters on weekly trips to Arab camps near Hafr al Batin, in the northern Arabian desert about 65 miles from the Kuwaiti border. But until Tuesday the Syrians had not opened their camp, which is near camps of Saudi, Kuwaiti and Egyptian forces.

The Syrians are about 1,200 strong, with armored units said to be on the way. At the moment the commandos have virtually no equipment other than what they carry on their backs and belts.

For now, the Syrians and

Iraq.

Assad met last week with Secretary of State James Baker III in the first major face-to-face contact between Damascus and Washington since President Bush was elected in 1988.

Saudi Arabia, meanwhile, emphasized that its renewal of ties with Moscow, another former ally of Baghdad, should send a clear sign to Saddam.

"When these two countries stand together for the withdrawal of Iraqi troops from Kuwait ... and identify their position in a common way, this, I believe, should give a message to Iraq that their position is untenable," the Saudi foreign minister said.

Saudi Arabia has been the staging ground for some 150,000 U.S. troops that have been deployed since the Aug. 2 Iraqi takeover of Kuwait.

One of Saddam's few key supporters, PLO chief Yasser Arafat, arrived in Jordan Tuesday following talks with Saddam in Baghdad.

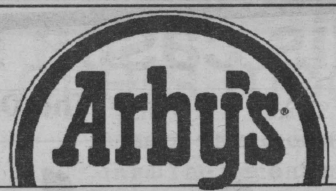
He met immediately with King Hussein in a continuing effort to come up with a solution to the crisis, officials said. It was his third visit to Jordan in less than four weeks.

2,000 Egyptian front-line forces are more a political statement than a military force.

The American forces, which have been fortifying their forward positions with tanks and other heavy armor and artillery in the past two weeks, remain in most areas about 30 miles behind the Arab forces.

At the Kuwaiti camp, officers acknowledged that about 70 percent of the 20,000-strong Army has been lost as a result of the Aug. 2 Iraqi invasion, including a good number of Kuwaiti troops who were on vacation when Iraq invaded.

But the Kuwaiti commanders said they wanted to lead any offensive action to force Iraq from Kuwait.



WITH THIS COUPON  
**2** Arby's Regular Roast Beef Sandwiches  
Offer valid through September 22, 1990 at participating Arby's® Restaurants. Limit 4 per coupon. Not valid with any other coupons, offers, or promotional discounts.  
**\$2.49**  
Just

WITH THIS COUPON  
**50¢ OFF** Any Regularly Priced Arby's Sandwich (except Junior)  
Offer valid through September 22, 1990 at participating Arby's® Restaurants. Limit 4 per coupon. Not valid with any other coupons, offers, or promotional discounts.

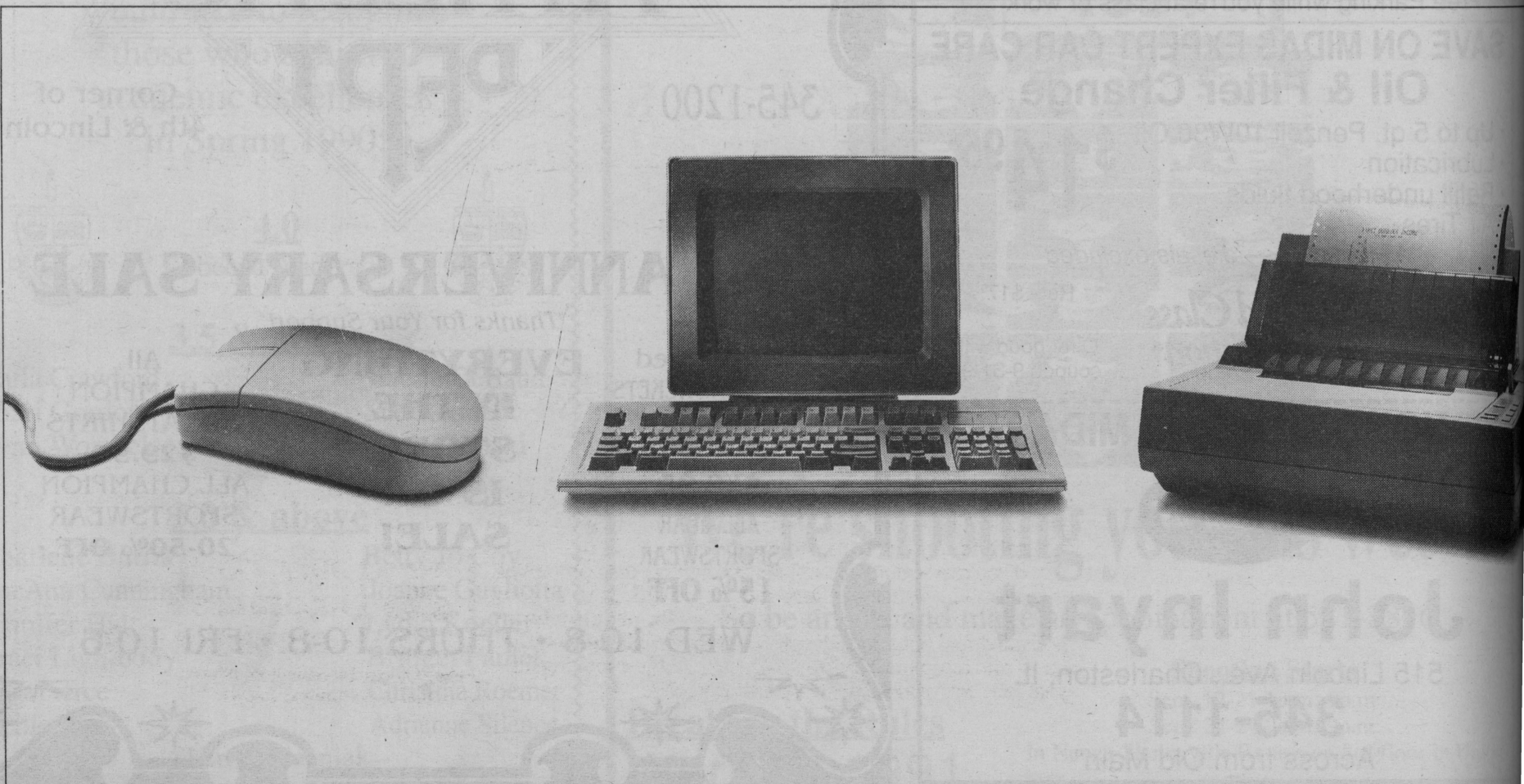
WITH THIS COUPON  
Arby's Beef n' Cheddar Sandwich and Curly Fries  
Offer valid through September 22, 1990 at participating Arby's® Restaurants. Limit 4 per coupon. Not valid with any other coupons, offers, or promotional discounts.  
**\$2.29**  
Only

WITH THIS COUPON  
Arby's Regular Roast Beef Sandwich and Curly Fries  
Offer valid through September 22, 1990 at participating Arby's® Restaurants. Limit 4 per coupon. Not valid with any other coupons, offers, or promotional discounts.  
**\$1.99**  
Only

**TASTE THE ARBY'S Difference!**

310 Lincoln Ave. • Charleston • 348-5144

**JIMMY JOHN'S**  
**WANTS**  
**YOUR**  
**BODY**  
**TO HAVE, TO HOLD,**  
**TO LOVE**  
**AND CHERISH**  
**GOURMET SUBS!**  
**JIMMY JOHN'S**  
**"I'LL BRING 'EM TO YA"**  
**345-1075**  
© Copyright Jimmy Johns Inc.



# Syphilis cases reach peak level

CHICAGO (AP) - Syphilis is at its highest level in 40 years in the United States, and the biggest increase in the sexually transmitted disease has been among blacks, according to a new study.

A separate study also published in Wednesday's Journal of the American Medical Association says the common, inexpensive methods of treating gonorrhea should be abandoned because of sharp rises in both the penicillin- and tetracycline-resistant strains of the disease.

In the first study, researchers at the Centers for Disease Control in Atlanta, Ga., report a 34 percent increase in the number of Americans treated for syphilis between 1981 and 1989. They said 18.4 of every 100,000 Americans were treated for syphilis last year, up from the 13.7 cases per 100,000 treated in 1981.

The 1989 rate was higher than at any time since 1949, the study said. The overall rate has risen most

sharply in the last four years, which may be an indication that precautions spurred in the early 1980s by the AIDS outbreak are on the wane, said one of the study's authors, Dr. Allyn K. Nakashima of the CDC's division of sexually transmitted diseases.

"Obviously the message has not gotten out to certain groups," Nakashima said in a telephone interview Monday.

Especially worrisome though, the study's authors say, is the high rate among blacks. The study shows the incidence of syphilis among blacks more than doubled between 1985 and 1989, to 121.8 cases from 52.6 cases per 100,000 people.

In contrast, syphilis rates among white males have dropped by 69 percent since 1982. The disease rate for white females remained low and unchanged.

Data for the study came from quarterly and annual reports sent to the CDC by state health depart-



ments over the nine-year period reviewed.

Researchers were unable to give concrete reasons for the differences between the two racial groups, although they suggest that the higher rate among blacks may be linked to a higher incidence of drug abuse, poverty and homelessness.

"This is just one more problem that can be attached to that disenfranchised group," Nakashima said.

Commenting on the new study, the March of Dimes Birth Defects Foundation said in a statement that it has seen "a shocking 186 percent jump" in the number babies born with syphilis passed on by infected mothers in the last five years.



\$1.50

Pitcher

Open For Business as Usual

7p.m.- 1a.m.

19 & Older



Wednesday at

Marty's

ON CAMPUS

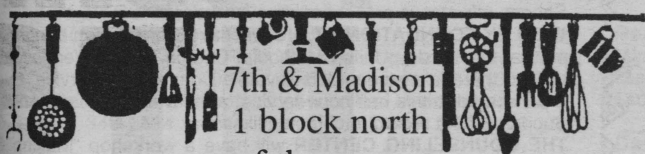
75¢ Large Drafts

99¢ Brats

Tonite: Thick'n'Cheezy pizza by the slice. . . \$1.25

KEEP UP WITH CURRENT EVENTS ON CAMPUS!  
READ *THE DAILY EASTERN NEWS!*

## WHAT'S COOKIN'



7th & Madison  
1 block north  
of the square  
345-7427



**HOMEMADE MEXICAN FOOD**  
REAL CHEESE, REAL SOUR CREAM, REAL FRESH VEGETABLES, REAL FRESH 100% GROUND BEEF, REAL GOOD!

## PHI GAMMA NU

Professional Business Fraternity  
Congratulates the following actives on their academic excellence for Spring '90

4.0

Kara Boone Grace Knight  
Suzanne Fickes Jason Sutfin  
Paula Thrasher

3.5 and above

Kari Barr Robin Gill Cindy Stewart  
Kathie Tharp Nicki Vogel Melissa Wernsman

3.0 and above

Teri Banick Kevin Day Michael Elliott II  
Chrissy Herrell Kimberly Hogan Mike Johnston  
Mark Kennedy Steve Lambeck Tracy Laux  
Vince Mickey Julie Novsek Kelly Peters  
Alison Randolph Ellen Sreniawski Sherri Strohm  
Amy Vaughn Laura Wienke Vicki Wroblewski



## We're looking for seniors who like working with all kinds of hardware.

Careers in data processing, accounting, actuarial, and auditing at State Farm.

At State Farm, we understand the concept of "work." Believe it or not, we also understand the concept of "play."

That's because we don't think you can be really outstanding at the first without having an appreciation for the second. Which is exactly why a career at State Farm in Bloomington could be the ideal place for you.

You'll work for one of the country's most respected companies on the most advanced computer equipment in the industry. You'll be challenged and stimulated. You'll be rewarded with excellent pay and benefits. You'll make your classmates *very* envious.

What's more, you'll also have time to appreciate the finer things in life. That's because Bloomington isn't just a great place to start a career, it's a great place to live, to enjoy, to start a family (if, indeed, you're ready to start thinking about that). In addition to the community's pleasant neighborhoods, inviting parks, and other recreational facilities, you'll find two universities that offer a host of cultural and social activities to take advantage of.

If you're a senior with a math, accounting, data processing, or computer science background, come talk to us at your college placement office. We're looking for people who are motivated and outgoing. People who enjoy challenges on the job — and away from it. After all, you're not just looking for a great job. You're looking for a great way of life.



**State Farm Insurance Companies**

Home Offices: Bloomington, Illinois.  
An equal opportunity employer.



# CLASSIFIED ADVERTISING

## CLASSIFIED ADVERTISING POLICY

The Daily Eastern News cannot be responsible for more than one day's incorrect insertion. Report errors immediately at 581-2812. A corrected ad will appear in the next edition.

All classified advertising must meet the 2 p.m. deadline to appear in the next day's publication. Any ads processed after 2 p.m. will be published in the following days newspaper. Ads cannot be canceled after the 2 p.m. deadline.

Classified ads must be paid in advance. Only accounts with established credit may be billed.

All Advertising submitted to The Daily Eastern News is subject to approval and may be revised, rejected, or canceled at any time.

The Daily Eastern News assumes no liability if for any reason it becomes necessary to omit an advertisement.

### DIRECTORY

- SERVICES OFFERED
- HELP WANTED
- WANTED
- ADOPTION
- RIDES/RIDERS
- ROOMMATES
- FOR RENT
- FOR SALE
- LOST & FOUND
- ANNOUNCEMENTS

## SERVICES OFFERED

"My Secretary" resumes, papers, letters, and more. Next to Monica's, 903 18th St. 345-1150. 1 - 4 p.m.

12/7  
 Microwave rentals. Carlyle Rentals. 348-7746.

00  
 Mini storage rentals. 348-7746.

00  
 Attention Students! Are you tired of getting towed away? Are you tired of tickets? Off-campus parking available at a monthly rate. Call 345-5022 between 8am & 6pm.

00  
 Typing work guaranteed. Phone 345-1489.

ca9/5, 12, 19

## HELP WANTED

QMRP. Available immediately. Qualified Mental Retardation Professional to join our staff at an ICF/DD residential facility. Job qualifications: degree in Human Services field, i.e. social work, education, psychology, recreation, music, special education, nursing. Experience working with developed mentally disabled preferred. Includes full benefit package. Inquire between 9 to 4 M-F. 345-4120 738 18th Street, Charleston II. EOE.

9/6 - 00

**Microwave  
 Rentals**  
 only  
**\$59**  
 for 9 months  
 Carlyle Rentals  
 348-7746

## HELP WANTED

Available Immediately: Individual to supervised staff and developmentally disabled adults. Good Planning and organizational skills required. Aggressive self-motivated person to work in a residential facility. Inquire at 738 8th Street, Charleston M-F between 9-4. E/O/E

10/11

9/20  
 Interviewing for Men's Basketball Manager position. Contact Mike Church at 581-2511 for more information.

9/19  
 Available Immediately: Hab Aide positions caring individuals needed to work with developmentally disabled adults. Full and part-time shifts available; mornings 6-9 and evenings 3-11 and weekends. Apply at 738 18th St., Charleston, between, 9am and 4 pm M-F EOE.

9/17-00

## WANTED

Loft needed for Dorm. Pay Well. Rich & Pauly 581-3036.

9/24

**OJI**  
 JANUARY SEMESTER BREAK  
**STEAMBOAT BRECKRIDGE**  
 JANUARY 2-12 • 5, 6 OR 7 NIGHTS \$177  
**VIL/BEAVER CREEK**  
 JANUARY 2-9 • 5, 6 OR 7 NIGHTS \$184  
 JANUARY 2-12 • 5, 6 OR 7 NIGHTS \$247

9th ANNUAL COLLEGIATE WINTER SKI BREAKS  
 TOLL FREE INFORMATION & RESERVATIONS  
**1-800-321-5911**

## ADOPTION

ADOPTION special couple wants to give your baby a loving home. Give your baby and us a chance. Attorney involved. Call collect. Mary Ellyn and Chuck. (708) 352-1656

## ROOMMATES

2 bedroom furnished apartment, 1 1/2 bath, dishwasher, free laundry facilities. 1017 Woodlawn 348-7746.

00

Furnished house for rent. 1720 10th 348-0440.

9/20

Rooms for Rent: For girls, parking for cars, Call 345-9670 after 5 p.m.

9/26

## CAMPUS CLIPS

INTER-VARSITY CHRISTIAN FELLOWSHIP will have HOTLINE on Wednesday, Sept. 19, at 9:00 p.m. in the Neoga Room, 3rd floor Union. Hotline is a means by which we can present out prayer requests and praise reports to out God. NEWCOMERS ALWAYS WELCOME!

PHYSICAL EDUCATION CLUB 1st Meeting of the year tonight at 7:00 in McAfee North Gym. All Physical Education Majors welcome!

PHI BETA CHI will have Informal Rush tonight at 7:00 p.m. at the Immanuel Lutheran Church. For rides call Tara at 581-5193.

PSI CHI will have Induction Ceremony Sept. 19 at 6:30 p.m. in the Rathskeller (Union). All members must attend. Initiates must be there at 6:00 p.m. Refreshments will be served. Faculty are invited.

BLACK STUDENT UNIN will be having their annual Recruitment Night tonight at 7:00 pm at the Afro American Culture Center. "Tonight's theme is bring FRIEND Night."

UNITY GOSPEL FELLOWSHIP CHOIR will have an extra choir rehearsal tonight at 7:00 in FAM 013 for anyone who would like to go to Chicago State University on Sept. 23.

IOTA PHI THETA (Service Fraternity) is having its fall formal smoker tonight at 8:30 pm, in the Martinsville Rm. of the Univ. Union. (3rd floor).

E.I.S.C.C.A.P. will have an IMPORTANT meeting on Wed. Sept. 19 at 6:10 p.m. in Coleman Hall Rm 229. Bring registration form & fee if attending Environmental Conference at U of I. Officers will be elected tonight.

EPSILON SIGMA ALPHA will have a meeting tonight at 6:00 pm in the Oakland room of the Union. All actives and pledges - please call an officer if you cannot attend!

NEWMAN CATHOLIC CENTER will work on the float for Homecoming Wed. & Thurs. from 7-10 p.m. at the Newman Center. Come on by.

NEWMAN CATHOLIC CENTER will have Communion Service tonight at 10 p.m. at the Newman Center. NO MASS THIS WEEK!

CHRISTIAN CAMPUS FELLOWSHIP will have Bible Study and Fellowship tonight at 7:00 pm at the Christian Campus House just behind Lawson Hall. Call 345-6990 for rides or info. This semester Roger Songer, minister, is presenting an overview of the Bible.

WESLEY FOUNDATION AT EIU will have Communion tonight at 9:30 p.m. at the Wesley United Methodist Church. Every Wednesday night at 9:30 there is a student led devotive Communion Service. Everyone is welcomed to this half hour service, and invited to share in the Lords Supper without regard to church affiliation.

THE COUNSELING CENTER will have a workshop "Making Career Decisions" presented by David T. Baird of the Counseling Center. The workshop will take place Wed., Oct. 3, 1990 from 7:00 - 9:00 p.m. Call to register (581-3413). Limited enrollment.

**PLEASE NOTE:** Campus Clips are run free of charge one day only for any event. All Clips should be submitted to the Daily Eastern News office by noon one business day before date of event. Example: an event scheduled for Thursday should be submitted as a Campus Clip by noon Wednesday. (Thursday is deadline for Friday, Saturday or Sunday events.) Clips submitted after deadline WILL NOT be published. No clips will be taken by Phone. Any Clip that is illegible or contains conflicting information will not be run.

## The Daily Eastern News

### CLASSIFIED AD FORM

Name: \_\_\_\_\_

Address: \_\_\_\_\_

Phone: \_\_\_\_\_ Students  Yes  No

Dates to run \_\_\_\_\_  Yes  No

Ad to read:

Under Classification of: \_\_\_\_\_

Expiration code (office use only) \_\_\_\_\_

Person accepting ad \_\_\_\_\_ Compositor \_\_\_\_\_

no. words/days \_\_\_\_\_ Amount due: \$ \_\_\_\_\_

Payment:  Cash  Check  Credit

Check number \_\_\_\_\_

20 cents per word first day ad runs. 14 cents per word each consecutive day thereafter. Students with valid ID 15 cents per word first day. 10 cents per word each consecutive day. 15 word minimum. Student ads must be paid in advance.

**DEADLINE 2 P.M. PREVIOUS DAY-NO EXCEPTIONS**

The News reserves the right to edit or refuse ads considered libelous or in bad taste.

## ACROSS

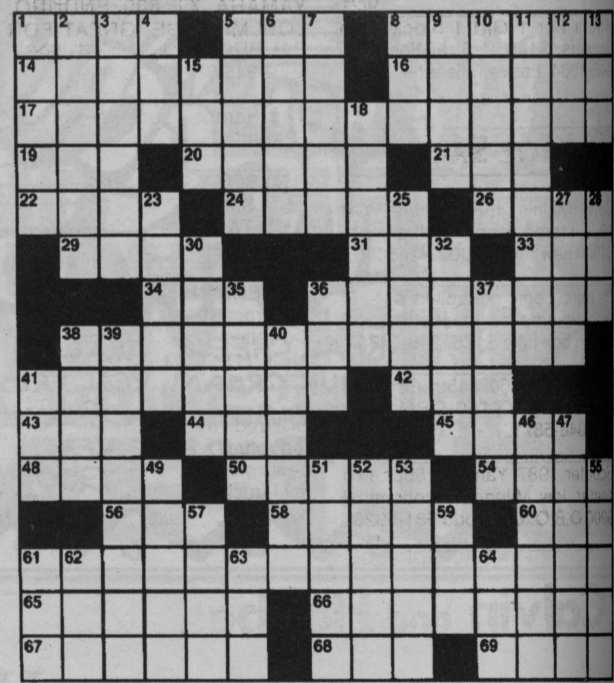
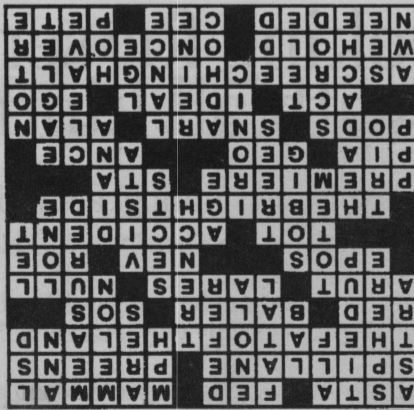
- 1 Cinema canine
- 5 Nourished
- 8 Bat, cat or rat, e.g.
- 14 He wrote "I, the Jury"
- 16 Primps
- 17 Something to live off
- 19 Like Lucy's locks
- 20 Farm machine
- 21 Cousin of "Mayday!"
- 22 In \_\_\_\_\_ (bogged down)
- 24 Penates' partners
- 26 Void's partner
- 29 Narrative poetry
- 31 Neighbor of Calif.

- 33 Water babies
- 34 Little tyke
- 36 Mischance
- 38 Something to look on
- 41 First showing
- 42 RR depot
- 43 Actress Zadora
- 44 Prefix for metrical
- 45 Forbear's tail?
- 48 Groups of whales
- 50 Tangle
- 54 Arkin or Alda
- 56 Behave
- 58 Perfect
- 60 The self
- 61 What a speed demon might come to

- 65 "\_\_\_\_\_ these truths..."
- 66 Swift, appraising glance
- 67 Had to have
- 68 Middling grade
- 69 "\_\_\_\_\_ Kelly's Blues," Cahn-Heindorf song

## DOWN

- 1 "Ad \_\_\_\_\_ per Aspera," Kan. motto
- 2 Globe
- 3 Busy
- 4 Furry TV fellow
- 5 Deadly
- 6 The \_\_\_\_\_ Gay bomber
- 7 Yield
- 8 Speed-limit letters
- 9 Greek god of war
- 10 Breakfast fruit
- 11 Careful and guarded
- 12 Actress Sothern
- 13 Hallucinatory drug
- 15 Dr. Jekyll's hangout
- 18 Ditch
- 23 Ojibway pole carving
- 25 Religious factions



- 27 Only
- 46 Cling (to)
- 55 \_\_\_\_\_ Dame
- 28 Allow
- 47 Aerie fledgling
- 57 Prompter prefix
- 30 Ferber book
- 48 Young haddock
- 59 More than med.
- 32 Panorama
- 51 Kind of committee
- 61 Barley beard
- 35 Kilmer poem
- 52 Roi's mate
- 62 Bishopric
- 36 Epoch
- 53 Lamas role in "Falcon Crest"
- 63 "Kookie" Byrnes
- 37 Rigg or Ross
- 64 School dance
- 38 D'Artagnan's pals, e.g.
- 39 Annoying person or situation
- 40 Subtly sarcastic
- 41 Oh, so softly: Mus. abbr.

## WEDNESDAY

## SEPTEMBER 19

P.M.	WTWO-2	WCIA-3	WAND-7, 17	ESPN-8	USA-9	WGN-10, 9	WILL-12, 12	Life-13	WCCU-24, 27	DISC-28	WEIU-29, 51	TBS-30
6:00	News	News	News	Sportscenter	MacGyver	Andy Griffith	MacNeil Lehrer	E.N.G.	Cheers	Rendezous	News Scan	Happy Days
6:30	Night Court	Entmt. Tonight	Cosby Show	Baseball		Bewitched	Newshour		Night Court	World Monitor	Disney	Jeffersons
7:00	Unsolved	Lenny	Wonder Years		Murder, She Wrote	Movie:	Adlai Stevenson	L.A. Law	Movie:	Great Wall of Iron		Movie: Nevada Smith
7:30	Mysteries	Doctor.Doctor	Growing Pains			Bloodsport			Smockey & the			
8:00	Fanelli Boys	Jake and the Fatman	Doogie Howser		Movie :				Movie:	Bandit II		Sacketts
8:30	Dear John		Married Poepole		Dangerous Pursuit		Civil War.Filmmaker	For Love and Honor	H.S. Sports			
9:00	Hunter	Top Cops	An Evening with...			News	Decade of Destruction		Gunsmoke	Survival! The Motor Car	Combat	Movie:
9:30												
10:00	News	News	News			Twilight Zone	Being Served	Tracey Ullman	Odd Couple	Panda	Golden Years of Television	The Missouri Breaks
10:30	Tonight Show	M*A*S*H	Love Conn.	SportsCenter	Miami Vice	Magnum, PI	Movie:	Molly Dodd	Arsenio			
11:00		Current Affairs	Into the Night	Baseball	Crime		Wonder Man	Moonlighting		Beyond 2000	Streets of San Francisco	
11:30	Late Night	Hard Copy		Tonight	Story				Hawaii 5-0			

# Winnie Mandela facing criminal charges

JOHANNESBURG, South Africa (AP) - The government said Tuesday it will charge Winnie Mandela with kidnapping and assault, a move that could endanger its peace talks with her husband's African National Congress.

Mrs. Mandela, wife of ANC leader Nelson Mandela, will be charged in the alleged abduction and beatings of four young men at her home in December 1988. One of them, 14-year-old Stompei Seipei, was found dead.

Mrs. Mandela's bodyguard, Jerry Richardson, was convicted

of murdering Seipei and sentenced to death last month. At his trial, the surviving victims testified that Mrs. Mandela, 56, beat them with a whip. She has denied wrongdoing.

The announcement came as Mandela, the country's best-known black leader, met with other ANC officials to discuss the police crackdown on black factional fighting in townships around Johannesburg.

Mandela on Monday threatened to suspend the peace talks if the government fails to halt the carnage that has killed nearly 800

blacks since Aug. 12. Most of the fighting has been between Xhosa and other black ANC supporters and the Zulu-based conservative Inkatha movement.

He said new police measures announced Saturday, including reinforcements, roadblocks, weapons searches and mounted machine guns on police vehicles, would be "ineffective" and were a "license to kill" for security forces.

Mandela has staunchly defended his wife and might be encouraged by supporters to break off talks if the government proceeds

with the prosecution.

President F.W. de Klerk and Mandela met twice last week and both say they want black-white talks on ending apartheid to move forward as quickly as possible. But the township battles, combined with the charges against Mrs. Mandela, make setbacks appear more likely than breakthroughs.

Klaus von Lieres und Wilkau, attorney general for the Johannesburg Supreme Court, had said he would await completion of the Richardson case before deciding whether to charge Mrs. Mandela.

"After careful consideration of all the relevant facts, including possible implications beyond the normal legal ones, I have decided to prosecute Mrs. Mandela," he said in a statement.

There was no immediate comment from Mrs. Mandela or her husband.

They have accused the government of using the case as a propaganda campaign against them and the ANC, the largest black opposition group. They have said they would welcome a chance for Mrs. Mandela to defend herself.

# CLASSIFIED ADVERTISING

**WEDNESDAY 11**  
 SEPT. 19, 1990  
 THE DAILY EASTERN NEWS

**FOR RENT**

- Unhappy where you live? Room for 1 or 2 girls. Very nice. Near Campus. 348-8406. 9/20
- One-car garage, one block from campus, \$30 per month. 348-0394. 9/18
- Small house for 1 or 2 people \$200. Lease. 348-1614 or 348-8096. 9/19
- Need sublesor at Cambridge apartments. For this semester only 2 bdrm. 2 bdrm. upstairs. If interested call 345-6958 9/21
- Apartment for 1-4 people. Very close to campus. Jim Wood, Century 21 Wood Real Estate. 345-4489 9/21
- Male Roommate needed. \$125/month. Excellent condition, central air, good location. 348-8406 9/21
- Room For 1 Girl 1 block from campus. \$140, 1/5 utilities. Call 348-5084. Leave message. 10/1

**FOR SALE**

- Curtis Mathis HI-FI camera VCR 19 in stereo monitor all remote \$4000 new take \$800. 348-5460. 12/7
- Realistic Logic controlled AM-FM auto reverse car cassette \$325 new in box take \$175. 348-5460. 12/7
- Yamaha RD 350 \$450; Emerson 4-Head VCR \$150 OBO Must Sell! 348-5871. 12/7
- Scooter 1987 Yamaha 80cc two seater, low Mileage, economical \$900 O.B.O. Call Todd 581-5926 12/7

**FOR SALE**

- PIRANHAS?! (2) ten gallon aquariums. BRAND NEW. Piranha, light, pump, chemicals... EVERYTHING! \$65 345-1164 Mike. 12/7
- Braided rugs, oval and round, red, blue, green \$5-\$15. Almost new rollbar w/driving lamps for mini-truck \$60. 345-2473 after 2:00. 12/7
- 81 Honda 400cm Custom wind jammer dependable looks great \$650 OBO 345-1164 Dave. 12/7
- 30 watt per channel receiver loader \$150 and green Iguana 3 ft long excellent health and tame \$159 phone 348-0442 8/30-00
- 1986 FORD ESCORT 2 DR. BLUE 4 SPEED EXCELLENT CONDITION \$2,100 O.B.O. 345-3879. 12/7
- YAMAHA XT 600 ENDURO. LOW MILEAGE, GREAT FOR CAMPUS, RUNS GREAT, FAST. \$900 345-8669. ROB. 12/7
- Two Harness Loom \$100. 345-2241 after 5 pm. 12/7
- RED BELLY PIRANHAS, LARGE AND SMALL, WITH OR WITHOUT TANKS \$5 TO \$75 345-1164 MIKE. 12/7
- GOVERNMENT SEIZED Vehicles from \$100. Fords. Mercedes. Corvettes. Chevys. Surplus. Your area: (1) 805-687-6000 Ext. S-9997 10/19
- Braided rugs, oval and round, red, blue, green \$5-\$15. Almost new rollbar w/driving lamps for mini-truck \$60. 345-2473 after 2 p.m. 12/7

**FOR SALE**

- SELL '78 Yamaha 650 Special \$600.00 '75 Kawasaki 900z. Both look and run good. \$625 OBO 349-8436. 12/3
- Realistic Mach two speakers Marantz 130W EQAMP Sanyo cassette deck technics turntable \$400. 348-5460. 12/7
- Dennon/JVC Stereo System \$1500 and a Fisher 100 WATT Stereo System \$1000. Call after 4:00 p.m. 348-5350. 12/7
- CUSTOM TEAM MIYATA BIKE with Shimano Dura-Ace Grupo. Mavic Rims. Mint Condition. MUST SELL BEST OFFER. Call Rick at 581-8074 9/19
- 1989 CAMERO RS T-TOPS Power locks A/C cassette V-8 automatic w/overdrive 100,000 warranty call 581-3231 AFTER 10 P.M. OR 356-3229 \$10,000 neg. 9/10-00
- Realistic Stereo System: 100 w Rec. DC, 300 w Speakers, mic and mixer. Practically new! \$750 O.B.O. Call Bob 581-5370. 9/21

**LOST & FOUND**

- FOUND: Ladies prescription glasses with case. Navy blue frames. Contact the speech department. #2016 9/19
- FOUND: two black & white kittens near 2630 Sale, St. call 345-1182. 9/21
- Lose something? Find Something? The Daily Eastern News can help you with your advertising needs. 9/19

**ANNOUNCEMENTS**

- Quick cash. Highest prices for jewelry, gold, silver, anything of value. The Pawn Shop. 348-1011 12/7
- JEWISH HIGH HOLY DAY SERVICES, Mattoon Jewish Community Center, 1608 Richmond: Rosh Hashanah eve, Wed., Sept. 19, 8 p.m.; Rosh Hashanah, Thurs., Sept. 20, 10 a.m.; Yom Kippur eve, Kol Midre, Fri., Sept. 28, 8 p.m.; Yom Kippur, Sat., Sept. 29, 10 a.m. Yizkov and Neilah 4:30 p.m. 234-3267. ca/9/12,13,14,17,18,19
- HEY STUDENTS! Send a video tape to your friends and relatives about your life at Eastern. WE'LL TAPE ANYTHING!!! Ask for Paul 581-8012. ca 9/13,14,19,21
- BROADWAY JOE'S SPORTS PUB, 1412 Broadway, Mattoon OPEN SUNDAY'S Noon to 1 a.m. Kitchen open M-S 5p.m. to midnight. Two wide-screen TVs, Pool, drink specials. 9/21
- STRUT YOUR STUFF! Rent costumes for EIU Homecoming Parade! Choose from 3000 with groups available. By appointment 345-2617 GRAND BALL COSTUMES! ca 9/17-28 10/1-12
- See what LEADERSHIP, FRIENDSHIP AND SERVICE are really about. Attend ALPHA PHI OMEGA'S Information Meeting, Thursday September 20th at 7:00 p.m. in 103 Coleman. APO invites everyone! 9/20
- Sheila Simons - Keep up all your good work. I'm behind you all the way! Suzy. 9/19
- Loria, Lori, Tony, Beth & Lisa - Thanks for being such great roommates! Love - Melvin. 9/19

**ANNOUNCEMENTS**

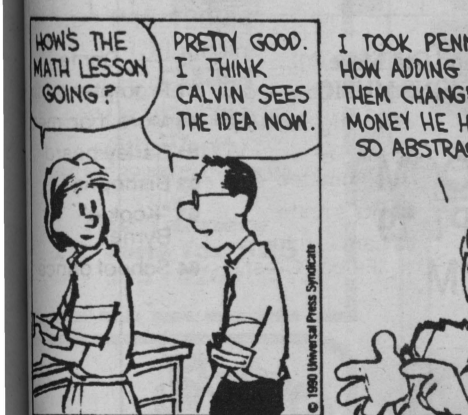
- Cheer team tryouts. Men and women welcome to cheerleading workshops for JV squad. Tuesday-Thursday 5:00 at McAfee. 9/19
- GAYLE SPREITLER, Happy Birthday Hotshot! We can either take Ziggy to female bond at the lake, buy a pizza on Todd's Visa, or have a cocktail in the baby pools. Afterward, we can go dancing at Marty's followed by a small kitchen fire, football, and a shower with the roaches - don't let them see you nekkid! If we can find your icescraper, we'll grill you a Birthday feast! Love your roomies, the felon (SW), the alcoholic (BS), the bad influence (JK) all-in-all, the original doo-wap girls! 9/19
- Tracy Bowman: You're an awesome AST Psi pledge! I'm so proud of you! I love my beautiful baby! Mom 9/19
- Boomer's Beach Bash Sept. 20 & 21. Live Entertainment. 9/21
- Congratulations Kerri Jo on getting lavaliered to Brad Mitchell. Your Alpha Sig sisters are happy for you. 9/19
- Barb Gentry: Hope you have an awesome day. Thanks for being an awesome sister and friend. Love, your secret sis. 9/19
- Jenny Phillips and Beth Caron, I'm sorry I haven't been around much, you still know we have THE BEST family around! Love ya both, SUZY. 9/19
- Congratulations Gena Whitson on getting lavaliered to Brian Owen. Your Alpha Sig sisters are happy for you. 9/19

**ANNOUNCEMENTS**

- Laura Craig: Happy Birthday! Have a good one! Love, Alpha Sigs. 9/19
- TAMMY BACON: HAPPY BIRTHDAY! HOPE TO SEE YOU TONIGHT AT THE TOGA PARTY! LOVE YA - TRACY. 9/19
- Rae Ann Cunningham, cones anyone? Wanting to be a vase, interesting concept! Beer me - O'Malley's. I may be a ? But I'm not dead! I love my A-G sis Always, CeCe. 9/19
- CHRIS SPANIARD: Congratulations on being nominated for the Grace Mason Lundy Award! We know you'll represent us well!! Love, your Delta Zeta sisters. 9/19
- MAGGIE SULLIVAN: Congratulations on being initiated into the Honorary Order of Omega! Your Delta Zeta sisters are so proud of you!! 9/19
- DANA YABLON, Happy 20th Birthday, have a great one! Keep your Sanity! Love you, Lynette. 9/19
- Epsilon Sigma Alpha Fundraising Meeting tonight 5:45 pm outside Oakland Rm - Union come with ideas! 9/19
- Hey, Mike M.'s Football Friend from New York, Krackers was great! Call me. Laura 3094. 9/25
- Scott Baiker, I had a great time at Six Flags! Thanx. Relax! Love, Kelly. 9/19
- "Just Spences" Vintage Clothing Yard Sale 1148 6th 4-8 p.m. Thursday September 20th (Rain Date: Sept. 27th) 9/20

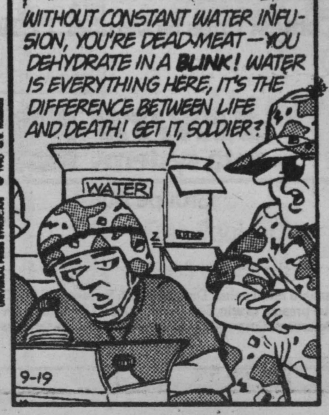
**Calvin and Hobbes**

by Bill Watterson



**Doonesbury**

BY GARRY TRUDEAU



**ABSOLUTELY GUARANTEED TO SELL ANYTHING!**

**THE SOLD AD!**

The Daily Eastern News will run your CLASSIFIED AD for as long as it takes to Find you a buyer!!

- 15 word SOLD AD is \$8.25
- 20 word SOLD AD is \$11.00

\*The SOLD AD is available to any non-commercial individual who wishes to sell an item or items (max. of 3 items). All items must be priced and no charges may be made. Ad will be canceled at the end of the semester if buyer is not found. Sorry, no refunds.

Name: \_\_\_\_\_

Address: \_\_\_\_\_ Phone: \_\_\_\_\_

15 words  20 words Dates to run \_\_\_\_\_

Message: (one word per line)

\_\_\_\_\_  
 \_\_\_\_\_  
 \_\_\_\_\_

Under Classification of: \_\_\_\_\_ Person accepting ad \_\_\_\_\_

Expiration code (office use only) \_\_\_\_\_ Compositor \_\_\_\_\_

no. words/days \_\_\_\_\_ Amount due: \$ \_\_\_\_\_

# Atlanta nets Olympics

TOKYO (AP) — Atlanta, symbol of the South, beat out Athens, symbol of the Olympics, and was awarded the centennial Summer Games in 1996 Tuesday.

In what it considered a choice between sentiment for the past or success for the future, the International Olympic Committee chose Georgia over Greece to celebrate the 100th anniversary of the rebirth of the Games first staged in 776 B.C.

"We got to the point where we had to decide whether in the centennial year you look back or you look forward," said Richard Pound, an IOC vice president from Canada.

"I think most people sensed that, when it was all over, it was time to look to the next century." Translation: Olympic riches not imagined just a decade ago.

Almost broke as it began the 1980s, the IOC said last week that marketing and television fees would take in \$1.84 billion for the Olympic movement for the four-year period leading to the 1992 Games in Barcelona.

Atlanta has a billion-dollar budget and a projected \$156 million surplus and is looking at \$500 million-\$600 million in rights fees

from U.S. television enticed by the opportunity for live prime-time coverage.

Stadiums for pro and college football, basketball and baseball are already there, a domed stadium is already under construction, and plans already call for an 85,000-seat track stadium, a swimming complex and a velodrome among \$500 million-\$800 million in Olympic construction.

The result, after the Games come to close on Aug. 4, 1996, will be an unprecedented amount of world-class training and competition facilities in a new area of the world.

Atlanta organizers and IOC members insisted the deciding 51-35 vote over Athens on the maximum fifth ballot had nothing to do with money.

"As we say in Georgia, that dog don't hunt," said Andrew Young, a former Atlanta mayor who was a key figure in the winning bid.

Under worldwide sponsorship and TV negotiating agreements initiated by IOC president Juan Antonio Samaranch, "the money would be fairly the same in any part of the world. We want to get away from the idea of making money and back to the business of building sports and culture," Young said.

# Former Panther Muhr makes first cut by MISL's St. Louis

By CHRIS BOGHOSSIAN  
Sports editor

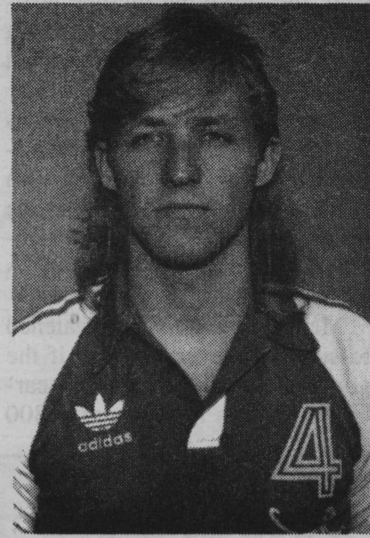
Greg Muhr's hopes of playing professional soccer in the United States are still alive.

Muhr, who graduated in December after a four-year stint as a Panther, made Friday's first cut by the Major Indoor Soccer League's St. Louis Storm, who drafted Muhr as their first-round pick in July.

Although neither Muhr nor Storm coach Don Popovic were able to be reached, Storm director of public relations Jerry Lovelace said that Muhr is still alive.

"He still has a chance," Lovelace said from the Storm office in St. Louis. "From the comments I've heard from the coaches about Greg, he's been working out every day with the team. His chances are still good. They think he can play. He's getting a great look by the coaches."

Lovelace added that it's still too early to be talking about Muhr's chances of making the team because not all of the players have reported to camp.



Greg Muhr

"Frankly, we're still going to cut a lot of people," Lovelace said. "Nine starters are here, and we expect 15 or 17 total."

Lovelace said one of four things could happen to Muhr: he could make the team and sign a contract as a full-time player; he could make the developmental squad; he could sign later in the season; or he could be cut.

"The developmental squad player does everything that a full-time player does, but he wouldn't play every game," Lovelace said. "It's somewhat like a taxi player in the NFL."

"We have three developmental players each season. They're listed on the roster and activated for a game when they're needed — on a game-to-game basis, depending on injuries to other players."

Muhr is one of only two draft choices still left on the team after last week's tryouts. Lovelace said that the No. 3 and No. 4 draft choices were not asked back to camp.

"Every guy that's a high draft choice, that's a player we have a very good line on," Lovelace said. "He's one of two draft picks that are still remaining, but the final roster won't be made until the opening game (on Oct. 19)."

"Overall, he's doing pretty well."

Another Eastern graduate, Garry Laidlaw, left Tuesday for Wichita, Kan., where he started tryouts with the MISL's Wichita Wings.

**BOOMERS**  
WITH A TWIST

Today's Special  
Lunch  
**HOME MADE MEATLOAF**  
with a choice of two side dishes  
**\$2<sup>69</sup>**  
10 minutes or it's free!

**kerasotes theatres** **MOVIES**

\$3.00 ALL SHOWS BEFORE 6 PM

**TIME • 258-8228**

Air America (R)  
5:00, 7:30  
Ghost (PG13) 4:45, 7:15

**CINEMA 3 • 258-8228**

Flatliners (R) 4:45, 7:15  
Ghost Dad (PG) 5:15, 7:00  
Navy Seals (R) 5:00, 7:30

**ALL SEATS \$1.50**

**WILL ROGERS • 345-9222**

Delta Force 2 (R) 7:15  
Pretty Woman (R) 7:00

**BURGER BREAK!**

50¢  
BURGERS  
40¢  
FRIES  
\$1  
LONGNECKS  
& WINE COOLERS  
at  
**FRIENDS**  
509 Van Buren

**CATCH THE SPORTS ACTION**  
**THE DAILY EASTERN NEWS!**

Come to Zenith Data Systems

**SOUND DECISIONS**  
EIU COMPUTER FAIR

**FREE CD TO THE FIRST 25 VISITORS!**

**And Win A Sony® Portable Discman® With Speakers In Our On-Campus Rockin' Raffle!**

**ZENITH DATA SYSTEMS INNOVATES AGAIN™**

Be sure to take part in the most exciting event on campus. Just drop in for some fun and a chance to win a Sony Discman with Speakers in Zenith Data Systems' Rockin' Raffle!

Win A Prize To The Tune Of \$10,000 In Our SOUND DECISIONS MUSIC TRIVIA CONTEST!

When you stop by, you'll also find out how you can participate in the major musical event of the school year — Zenith Data Systems' SOUND DECISIONS MUSIC TRIVIA CONTEST! You could win a \$10,000 Sony Surround Sound/Projection TV Home Entertainment Center, a Sony Discman with Speakers, a Sony Sports Walkman®, or any of thousands of other great prizes!

**More Prizes Worth Singing About Just For Stopping By!**

In addition to a chance at winning a Sony Discman in our on-campus raffle, you could take home a FREE CD — featuring a variety of popular recording artists — just for being one of the first 25 visitors to show up. So get in line early!

Be Sure To Stop By And Find Out More About Our SOUND DECISIONS MUSIC TRIVIA CONTEST!

**UNION BALLROOM**  
**WEDNESDAY, SEPT. 19**  
**10 A.M. TO 3 P.M.**

**MARTIN LUTHER KING JR. UNIVERSITY UNION**

For more information on our SOUND DECISIONS MUSIC TRIVIA CONTEST, **CALL CHERYL HACKMAN 581-2611**  
**Hurry! Contest Ends November 15, 1990!**

**ZENITH data systems**  
Groupe Bull

No purchase necessary. Void where prohibited by law. See contest rules on entry form for complete details. Estimated retail value: Discman with Speakers, \$350.00; Walkman, \$75.00; Compact Disc, \$15.00. Raffle drawing will be held at conclusion of event. Raffle participants need not be present to win. Sony, Discman and Walkman are registered trademarks of Sony Corporation of America. Graphics simulate Microsoft® Windows™ version 3.0, a product of Microsoft Corporation. © 1990 Zenith Data Systems Corporation.

# Bar owner Reedy found guilty

PORT CRANE, N.Y. (AP) - A Detroit bar owner, who had claimed he was not behind the wheel of the pickup truck in the Christmas Day crash that killed Billy Martin, was found guilty Tuesday of driving with a blood-alcohol content above the legal limit for intoxication.

William Reedy, 53, a close friend of the former major league manager, was cleared of a lesser charge of driving while impaired by a Town of Fenton Court jury that deliberated for about two hours before reaching a verdict.

Reedy was fined \$350 and had his driving privileges in New York state revoked for at least six months.

Reedy was convicted of a charge of driving with 0.10 percent or more blood-alcohol content, a misdemeanor. The charge carries the same penalties in New York as driving while intoxicated, but is lodged against some drivers because intoxication can be more difficult to prove in court, said George Filieau, spokesman for the state Department of Motor Vehicles.

In Reedy's case, the jury felt he was not impaired due to his high tolerance level for alcohol, but it did find that he was legally over the 0.10 percent limit, said Kevin Guyette, assistant Broome County district attorney.

Reedy was driving Martin's pickup truck on Dec. 25, 1989, when it crashed into a culvert near the entrance to Martin's farm north of Binghamton.

"I'm pleased with one verdict and unhappy with another," said Jon Blechman, Reedy's attorney.

# White says TV distorts game fights

ST. LOUIS (AP) - National League president Bill White says television is giving the public a distorted notion that baseball brawls are on the rise.

"I think we're seeing a lot more fights because we're televising more games," White said Tuesday during an appearance with American League president Bobby Brown in St. Louis. "Today, you have a fight in Milwaukee, and the whole country knows about it."

"In the past that game might not have been televised. I don't think we're having any more fights - and besides, they don't know how to fight."

Statistics seem to back up the notion. Brown says the American League found that the number of fights this year is not measurably higher than at any time in the last five years.

Both presidents say, however, that they will continue to crack down on fighting.

Brown noted that nine individuals were suspended after the major league's worst brawl, lasting almost a half-hour, took place at a game between the Milwaukee Brewers and Seattle Mariners June 30 in Seattle.

White defended himself against complaints that the fines he has levied have varied widely.

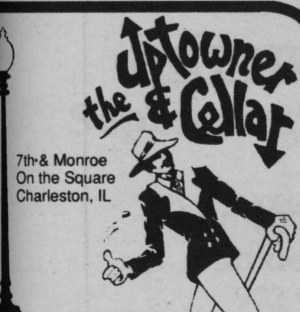
"All contact is not the same," White said. "I'm not sure you could get into any set pattern. This is a competitive game."

He also said increasing fines likely wouldn't be of much help.

## STUDIO 3

345-4269  
1113 Lincoln  
**\$5 OFF!**  
ANY HAIR SERVICE  
with Wendy  
(MUST BRING IN COUPON)  
also

**The Tannery**  
12 Tans for \$25  
345-4269



Wednesday  
Lienenkugel's  
Pitchers  
**\$3.00**  
ALL DAY

**THIRSTY'S**  
PRESENTS  
**FREE FOOD NIGHT**  
FREE HOT DOG & POPCORN WITH A DRINK PURCHASE  
(Soft Drinks Included)  
**SUPER DRAFTS \$1.00**  
**LONGNECKS**

**WEDNESDAY AT TED'S**

**"BOOTLEG"**

Vintage Rock 'N Roll  
Featuring songs by Rare Earth, Spirit, Jimi Hendrix, Pink Floyd & More!

Admission \$1 (8-10 w/coupon)

**PARTY!**  
**TIL YOU CAN'T SPIN YOUR WHEELS ANYMORE!**  
**THEN CALL US & WE'LL SPIN OURS RIGHT TO YOUR DOOR**  
**JIMMY JOHN'S GOURMET SUBS**  
**"WE'LL BRING 'EM TO YA"**  
**345-1075**

© Copyright Jimmy Johns Inc.

Billiard Bar & Restaurant  
345-STIX

**Stix**

Open Everyday 10-1  
Sunday 12-12

**- WEDNESDAY -**  
Meet the Stix Corona Lady  
Corona \$1.25  
Margarita Pitchers \$5.75  
Margaritas \$1.50  
- Restaurant open soon -

Free Pool for Ladies until 6:00  
**"A Touch of Class"**  
Live DJ Nitely

**ΠΚΑ**

**OPEN HOUSE**

Come and learn all about the ΠΚΑ Fraternity  
Pi Kappa Alpha House  
in Greek Court  
Tonight 7:00 p.m.  
For rides & info Call 581-6539 or 581-6595

**DOMINO'S PIZZA**

Domino's Pizza regrets any inconvenience that may have resulted from the ad campaign that ran from 9/5/90 thru 9/7/90 in *The Daily Eastern News*. Our error however, will be your gain.

We will continue to make things right to the student population which we honor and respect. As always Domino's Pizza offers or matches the best deals in town and continues to service you with the delivery of our delicious pizza.

Please accept this invitation to attend a **PIZZA PARTY**  
this Thursday, Sept. 20 at 677 Lincoln  
There will be FREE pizza slices and Coke for all students.  
(Remember to bring attached coupon)

**10" 1-item Pizza**  
**only \$2.50** plus tax  
offer valid thru 9/19/90

This ticket redeemable at our **PIZZA PARTY**  
on Thursday, 1:00 p.m.-7 p.m.  
for 1 FREE slice of pizza and Coke.

677 Lincoln **DOMINO'S PIZZA** 677 Lincoln  
**348-1626** **348-1626**  
IT'S TIME FOR DOMINO'S PIZZA

*The Daily Eastern News* will shape you into the hottest fall fashions with the

**FASHION & FITNESS GUIDE**

Check it out  
**Thursday, September the 27th**

Wednesday, Sept. 19, 1990

COLLEGE OF HEALTH, PHYSICAL EDUCATION AND RECREATION

DIVISION OF RECREATIONAL SPORTS

# REC SPORTS SHORTS



Office: Lantz Room 147

Telephone: 581-2821

## ENTRY DEADLINES

\*Frisbee Golf (M,W,CR).....Wed., Sept. 26  
 \*Wellfest '90 Frisbee Golf Open .....Sat., Sept. 29  
 Bowling (CR) .....Wed., Sept. 26  
 Table Tennis Singles (M,W).....Thur., Sept. 27  
 \*Trapshooting (M,W,CR) .....Mon., Oct. 1  
 Water Polo (CR).....Wed., Oct. 3  
 \*Enter "on the spot"

## FRISBEE GOLF

Individuals may enter "on the spot" with a valid Student I.D. or Fac/Staff Rec card on WED. SEPT. 26 FROM 2:00- 6:00 P.M. near the campus pond.

SCORING: Individuals count the number of throws it takes to get a frisbee from the tee into the circle on each hole of the 9 hole course.

-Individuals may use the equipment provided or use their own frisbees, which must be approved Rec Sports Supervisor on duty.

More information is available in the Rec Sports Office.

BE SURE TO EXPERIENCE THIS NEW & EXCITING EVENT!!

## WELLFEST '90 FRISBEE GOLF

Enter "on the spot" on SATURDAY, SEPT. 29 from 10:00-4:00 P.M. near the campus pond.

Rules are the same as stated above!

If you compete on both days, only the first day of participation will count for score in Intramural competition.

## TABLE TENNIS SINGLES

Individuals must pre-register at the Rec Sports Office, Lantz 147, with a valid Student I.D. or Fac/Staff Rec card.

-Individuals may select to play in the Monday or Tuesday evening tournament. The winners from each nightly tournament will advance to the finals on Wednesday.

-Matches consist of the best 2 out of 3 games to 21 points, and you must win by 2 points.

Play begins Mon., Oct. 1 at 7pm on the Lantz South Deck.

## AEROBICS NOTICE!!

UNTIL FURTHER NOTICE, THE MON-THUR 7:00 PM SESSION WILL BE HELD IN THE MCAFEE NORTH GYM, INSTEAD OF THE SOUTH GYM. ALSO, THE MAXIMUM AMOUNT OF PARTICIPANTS IS 60 IN THE NORTH GYM. SORRY FOR ANY INCONVENIENCE THIS MAY CAUSE.

## FITNESS CENTER HOURS

EFFECTIVE IMMEDIATELY, THE FITNESS CENTER WILL BE OPEN ON FRIDAYS FROM 1:00-7:00PM, INSTEAD OF 1:00-9:00PM.

## BOWLING

Team captains must turn in a roster completed with all team members signatures and social security numbers to the Rec Sports Office, Lantz 147, with a valid ID.

-Teams consist of 4 individuals, 2 men & 2 women. Rosters are limited to 4 men & 4 women.

-All leagues will begin at 4:00 p.m.

-Teams are responsible for their own bowling fees.

-Teams must supply their own equipment or rent it from the bowling alley.

Play begins Mon., Oct. 1 at the University Union Bowling Alley.

## TRAPSHOOTING

Individuals enter "on the spot" with a valid Student I.D. or Fac/Staff Rec card on MON., OCT. 1 from 3:00-5:30p.m. and TUES., OCT. 2 from 2:00-5:00p.m.

-Competition is held at the Charleston Gun Club, located about 4 miles southwest of Charleston and 1/2 mile west of the 4th street extended road.

-Trapshooting fees are as follows: 10 shells and 10 targets, \$2.50; 10 targets, \$1.00. Individuals may shoot as many practice rounds as they wish; however, they may only shoot one round that counts for score and this must be designated before shooting.

## WELLFEST '90

### INTRAMURAL PARTICIPATION

WHAT: WellFest '90 Participation

WHO: Any group of 20-50 members

WHEN: Sept. 29, 1990 from 10am-4pm

DEADLINE TO ENTER: 12:00(noon) on Sept. 28, 1990

HOW TO ENTER: Fill out Participation Roster and turn in to the Rec Sports Office.

CONTEST: Day of the contest, any member on the roster will come to the Rec Sports Office and check in with the office worker at that time. From here, each team member must participate for at least one hour at WellFest '90 by visiting booths, watching demonstrations, etc.

QUESTIONS: Please direct to Jeff Smaha, 581-2821.

## EASTERN ILLINOIS UNIVERSITY

### WELLFEST '90

#### PROGRAM OF ACTIVITIES:

FRIDAY, SEPT. 28:

7:00 pm "Take Back the Night-Safety Awareness Walk"

5:00 pm \*ARC Crossover Training Program

SATURDAY, SEPT. 29:

7:00 am Volksmarch

7:00 am \*Segmented Triathlon

7:00 am Open Fishing

8:30 am \*ARC Crossover Training

9:30 am 5K Run

10:00 am Health Screening Booths

10:00 am Elementary Health Fair

10:00 am Food Booths

10:00 am Firetruck/Ambulance Display

10:00 am I-Search Mobile/McGruff

10:00 am Seat Belt Convincer

10:00 am Vince & Larry

10:00 am Bass Fishing Boat Display

10:00 am Pleasure Boat Display

10:00 am ROTC Camping/Survival Demo

10:00 am Petting Zoo

10:00 am Frisbee Golf Participation

10:00 am Poster Contest

10:00 am Balloon Twister

10:00 am Face Painting

10:00 am Open Fitness Center

10:00 am \*Men's & Women's Doubles Tennis Tournes

10:00 am Shooting Demo/Part.

10:00 am Canoeing Demo/Part.

10:00 am Children's Campus Walk Rally

10:00 am Toddler Exercise Demo/Part.

10:00 am Pom Pon/Baton Demo

10:30 am Gymnastics Demo

11:00 am Circuit Training Demo/Part.

11:00 am Bass Fishing Demo

11:15 am Rope Handling Demo/Part.

11:30 am Nordic Ski Demo/Part.

11:30 am Juggling Demo

11:45 am "The Country Cloggers" Entertainment

12:00 pm Open Swim Participation

12:30 pm Mattoon YMCA Aerobics Demo

1:00 pm Rappelling Demo/Part

1:00 pm Horseback Riding Demo/Part

1:00 pm Mattoon YMCA Sr. Fitness Demo

1:00 pm Scuba Demo

1:30 pm Chair Dancing Demo/Part.

2:00 pm Jackie Bennett Dance Ctr.

2:30 pm Free Throw Contest

2:30 pm Table Tennis Exhibition

3:00 pm Mixed Doubles Tennis Scramble

3:00 pm Rec Aerobics

3:00 pm Roller Ski Demo/Part.

3:00 pm Badminton Demo/Part.

4:00 pm Parent/Child Basketball Workshop

\*Pre-Registration Required

All activities centered in and around Lantz Building.

# Waters finally gets his chance

By R.J. GERBER  
Staff writer

Soccer forward Tom Waters' time has finally come.

After being in the shadows of such standouts as Garry Laidlaw and Dave Kompare last season, the sophomore is getting his chance to show the talents that earned him all-state honors his last three years at Batavia High School.

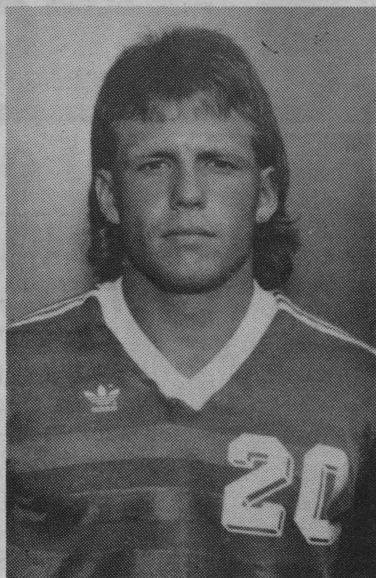
Waters, from St. Charles, came in and contributed as a freshman on the 1989 10-2-3 Panther squad. Waters scored two goals and earned a letter. Playing as a freshman didn't come as too much of a surprise to Waters.

"I thought I could come in and play right away," Waters said. "I wasn't going to hold back."

Coach Cizo Mosnia said that Waters just had to wait for his chance.

"Tom had to play the waiting game," Mosnia said. "He had a few people in front of him, but he is progressing better than what I thought."

Waters has already matched his goal production of last year and has added an assist. He scored the winning goal against Mid-Continent Conference foe Illinois-Chicago, and also scored the Panther's only goal against California Saturday at



Tom Waters

the Illinois State Soccer Classic. Waters' play in the classic earned him an all-tournament team selection.

Waters said that he didn't have too much trouble selecting Eastern as the place where he wanted to play his college soccer.

"I liked the guys on the team," Waters said, "and coach made me feel really comfortable. I knew we would have a good team."

This season has been an up and down year for the young Panthers. After a season-opening loss at Evansville, the Panthers bounced

back to win two MCC games before going winless at the ISU tournament this past weekend.

"I knew we were going to be young," Waters said, "but this weekend was tough."

Mosnia said that Waters had a few weaknesses at first, but added that he is doing just fine now.

"When Tom came in, he had some problems with his ball skills," Mosnia said. "But he is a big kid and he has good speed. He is doing quite well now."

The Panthers will compete in the Governor's Cup Friday and Saturday opening against Western Illinois.

"Western always plays physical," Waters said. "but we are looking forward to the game. Western is one of our biggest rivals."

Waters said that after the two defeats this past weekend, the Panthers have something to prove again.

"We proved that we could play when we beat Northern," Waters said, "but we have to go out and do it again."

Northern could get another shot at Eastern in the Governor's Cup this Saturday. Northern squares off against host SIU-E and the winners play Saturday.

"We would like to play them again," Waters said.

# National Football League

## AMERICAN CONFERENCE

### EAST

	W	L	Pct
Miami	2	0	1.000
Buffalo	1	1	.500
New England	1	1	.500
N.Y. Jets	1	1	.500
Indianapolis	0	2	.000

### CENTRAL

Cincinnati	2	0	1.000
Cleveland	1	1	.500
Pittsburgh	1	1	.500
Houston	0	2	.000

### WEST

L.A. Raiders	2	0	1.000
Denver	1	1	.500
Kansas City	1	1	.500
San Diego	0	2	.000
Seattle	0	2	.000

## NATIONAL CONFERENCE

### EAST

	W	L	Pct.
N.Y. Giants	2	0	1.000
Dallas	1	1	.500
Phoenix	1	1	.500
Washington	1	1	.500
Philadelphia	0	2	.000

### CENTRAL

Chicago	2	0	1.000
Detroit	1	1	.500
Green Bay	1	1	.500
Minnesota	1	1	.500
Tampa Bay	1	1	.500

### WEST

San Francisco	2	0	1.000
Atlanta	1	1	.500
L.A. Rams	1	1	.500
New Orleans	0	2	.000

# Major league baseball

## American League

### EAST

	W	L	Pct	GB
Boston	81	68	.543	—
Toronto	81	68	.543	—
Detroit	71	77	.480	10 1/2
Milwaukee	69	79	.466	11 1/2
Cleveland	69	80	.463	12
Baltimore	66	81	.449	14
New York	60	88	.405	21 1/2

### WEST

Oakland	94	53	.639	—
Chicago	85	62	.568	9
Texas	78	69	.531	16
California	74	73	.503	20
Seattle	72	76	.486	22 1/2
Kansas City	69	79	.466	25 1/2
Minnesota	67	83	.447	28 1/2

\*late games not included

### Tuesday's Results

Baltimore 4, Boston 1  
Cleveland 8, Milwaukee 3  
Toronto 3, New York 2  
Minnesota 10, Kansas City 4  
Chicago at Oakland, late  
Texas at Seattle, late  
Detroit at California, late

### Wednesday's Games

Chicago at Oakland  
Boston at Baltimore  
Milwaukee at Cleveland  
New York at Toronto  
Kansas City at Minnesota  
Texas at Seattle  
Detroit at California

## National League

### EAST

	W	L	Pct.	GB
Pittsburgh	84	64	.568	—
New York	83	64	.565	1/2
Montreal	79	68	.537	4 1/2
Chicago	71	76	.483	12 1/2
Philadelphia	68	79	.463	15 1/2
St. Louis	66	82	.446	18

### WEST

Cincinnati	83	65	.561	—
Los Angeles	79	69	.534	4 1/2
San Fran.	77	72	.517	6 1/2
San Diego	70	77	.476	12 1/2
Houston	67	81	.453	15
Atlanta	59	89	.399	24

\*late games not included

### Tuesday's Results

Chicago 8, Pittsburgh 5  
San Francisco 5, Cincinnati 3  
Los Angeles 6, Atlanta 2  
Montreal 4, New York 3  
San Diego 8, Houston 1  
Philadelphia 6, St. Louis 3

### Wednesday's Games

Pittsburgh at Chicago  
Montreal at New York  
San Francisco at Atlanta  
Cincinnati at Houston  
Philadelphia at St. Louis  
San Diego at Los Angeles

# Spurs' Wingate charged with rape

COLUMBIA, Md. (AP) — San Antonio Spurs guard David Wingate was free on \$10,000 bond Friday after being charged with the second-degree rape of a 17-year-old woman.

Wingate, 26, who played on Georgetown's 1984 NCAA championship team, faces up to 20 years in prison if convicted. He was released on bond Monday.

Howard County police said the alleged incident occurred Sunday at

a Columbia apartment that Wingate rented recently during a stay in the area.

The woman told police that she went to Wingate's for a party, began drinking and became ill. Wingate allegedly came into the room where she was resting and lay next to her.

She told the court that she tried to resist but was "so drunk and felt so out of it that she was helpless." Police said the woman and her sis-

ter left the party to contact authorities. An examination done by a physician revealed evidence of sexual intercourse, the court records said.

Wingate told police he had sex with the woman but insisted the contact was consensual.

Spurs vice president Bob Bass said he would speak with team owner Red McCombs and coach Larry Brown about Wingate's future with the club.

All dressed  
but no place to go...

Warbler photo sessions for  
Wednesday have been moved  
to Thomas Hall.

All regularly scheduled appointments  
should go Thomas Hall basement  
at any time between 12-4

Phi Beta Chi  
National Social Sorority



Informal Rush  
September 19, 7:00 p.m.

Immanuel Lutheran  
Student Center  
902 Cleveland  
For more Information or Rides Call Tara 581-5193

WATCH FOR THE HOMECOMING EDITION COMING IN  
THE DAILY EASTERN NEWS  
October 12, 1990.



We Deliver  
All Day  
345-2466

WEDNESDAY SPECIAL  
Italian Beef,  
French Fries,  
& Medium  
Drink  
\$3.79



610 W. Lincoln  
Charleston

345-6363

**PATTON**  
PRINTING • OFFICE PRODUCTS

- \* TYPEWRITER SERVICES
- \* PARCEL SHIPPING SERVICE
- \* 1991 CALENDARS
- \* TYPEWRITER SALES

418 W. Lincoln  
345-6488 345-6331  
FAX 345-1338

**3** COPIES

8:00 - 5:00 MON - FRI 9:00 - 12:00 SAT

tonite at **Mother's**...



75¢ Large Drafts

\$2 Lite Quarts

"Free BBQ with Purchase"

spend your Wednesday  
with your MOM!

**HAIRBENDERS**

1/2 Price Haircut

Regular \$10.50 NOW \$5.25

- 1st Time Customers Only
- With Participating Stylists
- Present Coupon

Expires 10/31/90



## Random thoughts take some shots at good and bad

Thumbs up to Eastern students for a good showing at the football team's home opener Saturday against McNeese State. But is it just a coincidence that the number of fans that reportedly attended the game — 6,408 — is exactly the same as the phone extension for Eastern's Sports Information Office?...



**Chris Boghossian**  
Sports editor

Give Eastern credit for not allowing McNeese State to score a touchdown, especially after the Panther defensive unit was on the field for more than 12 minutes in the third quarter...

Thumbs down to whoever took down the basketball and tennis courts across from Thomas Hall in back of University Court. Maybe you'll get the new courts up by the first snowfall. Perfect timing...

Double thumbs down to university officials for planning a downhill ski slope east of Ninth Street by the new Greek Court. Get real. What's next, a new domed football stadium? Be sure to make it artificial turf — Brad Fichtel, John Sengstock and Tim Moore will love you for it...

Now that the White Sox are showing just how good they are by dropping out of the AL West race, where are all of those "die-hard" Sox fans? And Cardinal fans — this is two years in a row that your team is finishing below the Cubs in the NL East standings...

Forget the past, Card fans, you have to worry about the future now. To all those great Cub fans, we're still in it (only 13 1/2 out), but just in case, opening day '91 is less than seven months away...

How and why did Southern Illinois' football team get a meeting with the University of Illinois for Saturday? Southern must think its the next Northern Illinois...

And speaking of the Huskies — the Panthers' first opponents of the year — are they still thinking bowl after that 60-14 loss a week ago Saturday to Nebraska? Didn't think so. Saturday's loss to "powerhouse" Toledo didn't help things much, either...

How about that new football scoreboard that made its debut with the Panthers at O'Brien Saturday? It's a good thing fans saw that there were 34.8 seconds left before the half. I know I was wondering if the time was closer to 35 seconds or to 34...

Apologies to the rugby team. It was written in last Friday's *Eastern News* that the team's contest against Illinois State was at ISU, when it actually was at Eastern. My fault...

I really wonder just how many so-called Oakland A's and San Francisco 49ers' fans were fans three or four years ago. But, of course, you've been fans your entire life. Yeah, right. And Liberace wasn't gay...

Hats off to whoever printed those shirts that say, "This is your brain," then show a Cubs' logo underneath, followed by, "This is your brain on drugs," then show a Cardinals' logo. Bad move to whoever wears the misprints that show the exact opposite...

The Bears look to be headed back to respectability after allowing just 402 yards total in their first two games. Who was that all-pro safety that used to play for them? Dave who? Remember, though, that they looked this good last year at this time...

And finally, good luck to Marty Pattin, an ex-Panther and former Kansas City Royal pitcher who signed with Senior Baseball League's Fort Meyer's club Monday. Pattin pitched for 13 years in the major leagues and is the person for which Marty's, the best bar in town, was named...

— Chris Boghossian is sports editor for The Daily Eastern News.



ERIC FULTZ/Associate photo editor

Eastern fullback Matt Cook battles for the ball with an Illinois-Chicago player during the Panthers' 2-0 win at Lakeside Field earlier this season.

## Governor's Cup next for 2-3 soccer squad

By R.J. GERBER  
Staff writer

Eastern's soccer team travels to Southern Illinois-Edwardsville Friday to compete in the Governor's Cup with Northern and Western Illinois.

Eastern meets Western in the first game, while Northern takes on the host Cougars, who are 3-3 on the young season and tied for 10th with Eastern in the Midwest Regional soccer rankings.

The Cougars are led by coach Ed Huneke, in his fifth season with the squad. SIU-E is ranked one spot behind Tulsa, but the Cougars defeated the Golden Hurricane earlier this season.

"It is very surprising that Tulsa is ranked above us," Huneke said.

Huneke said that he expected his team to be a little more successful this season.

"I expected our record to be better at this point in the season, but we have had some strange losses," Huneke said. "You expect to have a few bad breaks in the course of a

### • Waters finally gets his chance. Page 15

season, and hopefully ours are behind us."

Huneke said that he sees the Governor's Cup as a three-team race.

"I think it's up for grabs between Eastern, Northern and us," Huneke said. "Northern didn't lose much from last season, so we don't expect too many changes from them. A win over Northern will help us a great deal."

The Cougars are led by Joe Reiniger with four goals on the young season. Scott Marty and Jim Nischbach each have two goals and an assist.

Eastern and Western will get the Cup under way when they meet at 5 p.m. Friday, and the Northern-SIU contest will follow at 7:30 p.m. The consolation match is scheduled for Saturday at 2 p.m., and the championship will be played at 4 p.m.

## Young spikers gain experience on road

By ANN TASTAD  
Staff writer

At the beginning of the season, volleyball coach Betty Ralston said she would be happy if her team was 7-7 after the first 16 days of the season.

As it stands, the team came through a rugged 14-game road trip with a 6-8 record, and Ralston admits she's not totally happy with the team's play even though it came within one win of her goal.

"I said I was hoping to be 7-7 at this point of the season and we had several opportunities to do that," said Ralston. "I'm a little disappointed because we did have our chances, but it could have been worse."

Two of the losses came at the hands to Illinois and Penn State, both nationally ranked teams.

"We are 6-8, but I hope the kids know we've played some tough opponents," said Ralston. "It's the teams you should beat that you don't want to lose to."

"Some of the teams we've played are definitely above our level, but if we did learn something from playing them that can carry over to our Gateway Conference games, then that's fine."

The Lady Panthers will have to continue the season without the services of senior tri-captain Cindy Geib, who suffered an abraded cornea while warming up before a match over the weekend.

The doctors told Geib it could take up to three months for the injury to heal and Ralston is unsure of when she will return to the lineup.

With Geib out of action, Ralston will be looking to her younger players to come in and fill the gap.

"These are not life and death matches, but I want to see if the younger players can take charge and be the players I know they are capable of being," said Ralston.

One area where Ralston has been forced to play relatively inexperienced players is at the setter position.

Ralston has moved Shelly Stuckwisch from setter to middle hitter and that leaves freshman Amy Van Eekeren and Shannon Casey in the setting role.

"Shelly is no longer a setter but a middle hitter and she has played middle hitter for a few games and has done all right," Ralston added. "Shelly is one person I'd like to see come forth and show people what she can do."

"The setters are doing fairly well consid-

## Foreign fields again await football team

By CHRIS BOGHOSSIAN  
Sports editor

Just when the players' knees got a rest on O'Brien Stadium's natural grass, Eastern's football team now has two consecutive road games on artificial turf.

Both Saturday's contest at Murray State in Kentucky and the Panthers' Sept. 29 contest against Illinois State in Normal will be played on astroturf.

The Panthers then travel to Western Illinois, which plays on a natural grass field, on Oct. 6 for their fifth road game in their first six games.

At Northwestern Louisiana on Sept. 8, three offensive starters — guard Brad Fichtel, fullback John Sengstock and tight end Tim Moore — were injured on the Demons' artificial turf field. All sustained knee injuries.

All three missed Saturday's game against McNeese State and will miss at least three more weeks minimum, football trainer Rob Doyle said.

Doyle added that Fichtel had surgery on his knee Monday night to repair cartilage damage.

"(Fichtel will miss) maybe three weeks, depending on how well he responds to rehabilitation," Doyle said. "John and Timmy have some ligament damage and it will take time for it to heal. Surgery isn't in the cards for them."

"The artificial turf (at Northwest Louisiana) used to be in the Superdome (in New Orleans, where the NFL's Saints play their home games), and since they're a state school, they got it."

Doyle said that Moore's injury (sprained knee) could have occurred on natural grass, but Fichtel's was caused by the turf.

"Somebody fell into (Tim)," Doyle said. "But with Brad, no one touched him. His foot got caught in the turf. His is the closest one you could blame on the turf."

Sengstock and Moore are expected to miss about four weeks of action, Doyle said, adding that Moore might be back in three weeks depending on how well he responds to rehabilitation.

ering they have no college level experience. I give them suggestions during the games and talk to them, but I like for the setter to run the show by themselves. But that's a lot of weight to ask them to carry on their shoulders," Ralston said.

Ralston said the three senior hitters, Geib, Deanna Lund and Diane Kruto, are having the hardest time adjusting to the new setters as opposed to the newer players.

Last year's setter, Donna Sicher, is Eastern's all-time assists leader with 1,215.

"The three seniors knew what Donna was capable of doing because she set for them for three years, so it's hard on them. But the setters are getting to know when to set and what to set to the different hitters," said Ralston.

The Lady Panthers are recovering from their long road trip this week and will return to action Saturday against Loyola and DePaul.

Eastern will open Gateway Conference play Oct. 12 against Illinois State.

"Both Loyola and DePaul are doing real well, but I don't think they've played the quality competition we have," said Ralston.