

Eastern Illinois University

The Keep

1959 Shows Programs

1959

Summer 8-18-1959

Gentlemen Prefer Blondes

Little Theatre on the Square

Follow this and additional works at: https://thekeep.eiu.edu/little_theatre_1959_programs



Part of the [Theatre History Commons](#)

Recommended Citation

Little Theatre on the Square, "Gentlemen Prefer Blondes" (1959). *1959 Shows Programs*. 2.
https://thekeep.eiu.edu/little_theatre_1959_programs/2

This Book is brought to you for free and open access by the 1959 at The Keep. It has been accepted for inclusion in 1959 Shows Programs by an authorized administrator of The Keep. For more information, please contact tabruns@eiu.edu.

Summer of Musicals

Grand Theatre—Sullivan, Illinois



"Gentlemen Prefer Blondes"

August 18 through August 23, 1959

Who's Who in the Cast . . .

JERILI LITTLE (Lorilei Lee) who opened this season in the leading role of Ella in *Bells Are Ringing*, has appeared in opera, musical comedy and plays throughout the country. Her roles at the Grand last season included Laurey in *Oklahoma* and the title role in *Annie Get Your Gun*. Miss Little has appeared with Miami Opera Guild in support to Metropolitan Opera stars in *Madame Butterfly*. Earlier this season she appeared as Lalume in *Kismet*, Adelaide in *Guys and Dolls* and Irene Lovelle in *Say, Darling*.

PAUL FLORES (Henry Spofford) was applauded by last year's Grand Theatre audiences for his many portrayals, including the role of the King in *The King and I*. He has been heard in some 28 grand opera roles with leading companies throughout the country. Mr. Flores has appeared with Dorothy Kirsten and Leonard Warren in *Rigoletto* and was featured as Wagner in the production of *Faust* starring George London of the Met. His rich baritone voice has been heard at the St. Louis Municipal Opera in such productions as *Roberta*, *Oklahoma*, and *Song of Norway*. He was also seen here last season as Curley in *Oklahoma*. Mr. Flores will remain at the Grand for the final show of the season, *Fanny*.

SHIRLEY THAYER (Dorothy Shaw) has become a favorite here this season with her performances as Frankie in *Say, Darling*, Mama in *High Button Shoes* and Adah in *Naughty Marietta*. Miss Thayer has been seen by television audiences on such top shows as Goodyear Thea-

tre and Studio One. On radio, she has played many roles opposite such stars as Melvyn Douglas and has been heard on many of NBC's daytime serials. Her summer theatre credits include appearances at the Gateway and Camden Theatres.

EDEN NICHOLAS (Gus Esmond) is a native of Springfield whose singing has taken him to 44 states, Europe and South America, with stops enroute at the St. Louis Muny Opera, Los Angeles and San Francisco Light Opera Companies, and the Saint Paul Civic Opera to sing Ravenal in *Show Boat* and Valentine in *Faust* among other roles. He also tarried long enough in Hollywood to do several films for RKO including *The Enchanted Cottage* with Robert Young and Dorothy McGuire.

JOEL MUNCH (Josephus Gage) is a veteran of two full seasons at the Grand. Last summer he appeared in a variety of roles, including Lord Brockhurst in *The Boy Friend*, Joe Hardy in *Damn Yankees*, and Jud Fry in *Oklahoma*. He returns to Sullivan for the last two shows this season following engagements at the Red Barn Theatre, Northport, Long Island and the North Shore Playhouse at Bayville, L.I., where he played Tony in *The Boy Friend* and appeared in *Once More With Feeling*. After his appearance here in *Fanny*, Mr. Munch will return to New York to continue his studies at the American Theatre Wing.

KEN'S SUPERWAY

Moultrie County's Largest
Food Store

Open 7 Days Until
Midnight

Compliments of Reed's Sullivan Greenhouses, Inc.

We Are Your FLORIST'S
TELEGRAPH DELIVERY
FLORIST
Phone 4216 408 E. Water

Courtesy of

Sangamon Grace Ammonia Co. Fertilizer

417 S. Oakland — Decatur

SULLIVAN PLANT
Phone 4121

LOVINGTON PLANT
Phone 76

GUY S. LITTLE, JR.

PRESENTS

'Gentlemen Prefer Blondes'

Book by
JOSEPH FIELDS and ANITA LOOS

Music by
JULE STYNE

Lyrics by
LEO ROBIN

Production Directed by
SIDNEY EDEN

Choreography and Musical Numbers Staged by
JOEL SCHNEE

Designed and Lighted by
ANDREW GREENHUT

Musical Direction by
EDDIE McCARTY

Costumes by
JESSIE

CAST

DOROTHY SHAW	Shirley Thayer
LORELEI LEE	Jerili Little
GUS ESMOND	Eden Nicholas
LADY PHYLLIS BEEKMAN	Millicent Reed
SIR FRANCIS BEEKMAN	Robert Gwaltney
MRS. ELLA SPOFFORD	Helen White
HENRY SPOFFORD	Paul Flores
JOSEPHUS GAGE	Joel Munch
GLORIA STARK	Betty Chambers
PIERRE, A STEWARD	Dick Lamb
ROBERT LEMANTEUR	John Kelso
LOUIS LEMANTEUR, HIS SON	Dick Stephens
MAITRE D'HOTEL	Dick Lamb
ZIZI	Jeannie Hotard
FIFI	Myrna Ems
SPECIALTY SINGERS	Dick Lamb, Jerry Taflinger
MR. ESMOND, SENIOR	John Kelso

THE SINGING AND DANCING ENSEMBLE—Judy Bartlett, Myrna Ems, Karla Fleck, Jeannie Hotard, Clare Johnson, Ann Meeks, Virginia Summers, Dick Lamb, Jan Munch, Lee Starkey, Dick Stephens, Jerry Taflinger.

GENTLEMEN PREFER BLONDES is presented through special arrangement with Music Theatre, Incorporated, 119 West 57th Street, New York, N. Y.

CANDYLAND CAFE

First Door West of Theatre

Air Conditioned
Dining Room Service

Steaks, Seafood,

Luncheons

Enjoy Good Food in a Friendly
Atmosphere

Compliments of
BROWN
SHOE COMPANY
Sullivan, Ill.

Synopsis of Scenes

The time is 1924.

ACT ONE

- Scene 1. The French Line Pier in New York. A Midnight Sailing
- Scene 2. The Sun Deck of the Ile de France. Third Day Out.
- Scene 3. The Boat Deck. The Same Day.
- Scene 4. Lorelei's Suite on the Ile de France. Later That Day.
- Scene 5. Paris. One Week Later.
- Scene 6. The Ritz Hotel in Paris—Lorelei's Suite. That Evening.

ACT TWO

- Scene 1. The Pre-Catelan in the Bois. The Same Evening.
- Scene 2. A Street in Paris. Later That Evening.
- Scene 3. Lorelei's Suite at the Ritz. Three A.M. the Next Morning.
- Scene 4. The Central Park Casino, New York. Ten Days Later.

A F C O

Heating—Air Conditioning

Engineered Heat Co.

18 West Harrison

Sullivan

Phone 3176

Sheet Metal

Roofing

Russell M. Harshman Co.

Sullivan, Ill.

Phone 4235

READY MIXED CEMENT
CONTRACTORS

Basements, Walks, Drives,
Foundations and Patios
Floors, Porches and Steps

Compliments of **A & W Drive-In**

After the Show—Drive in for
Fast Service on All Kinds of
Sandwiches and Cold Drinks.

Jct. 121 and 32

Rhodes Lumber Co.

Lumber—Roofing
Cement

Paint—Hardware

1117 W. Jackson St.
Sullivan, Ill.

Everything to Build Anything

Gauger Lumber Co.

Musical Numbers

ACT I

It's High Time	Dorothy and Ensemble
Bye, Bye Baby	Gus, Lorelei and Ensemble
A Little Girl from Little Rock	Lorelei
I Love What I'm Doing	Dorothy
Just a Kiss Apart	Henry
The Practice Scherzo	Gloria
It's Delightful Down in Chile	Sir Francis, Lorelei and Ensemble
Sunshine	Henry and Dorothy
The Park Ballet	Ensemble
I'm A'Tingle, I'm A'Glow	Mr. Gage
House on Rittenhouse Square	Dorothy
You Say You Care	Henry
Finaletto	Lorelei and Ensemble

ACT II

Mamie Is Mimi	Gloria and Specialty Singers
Diamonds Are a Girl's Best Friend	Lorelei
Gentlemen Prefer Blondes	Lorelei and Gus
Homesick Blues	Lorelei, Dorothy, Gus, Henry, Mrs. Spofford and Mr. Gage
Keeping Cool With Coolidge	Dorothy and Ensemble
Button Up With Esmond	Lorelei and Ensemble
Finale	Entire Company

Welborn's Rexall Drug Store

Prescription Service
Free Delivery
Spice Island Spices
Fannie May Candies
Second Door West of Theatre

S. D. CUMMINS

Sullivan's Oldest Hardware Store
**Paints, Electrical
Supplies, Plumbing**
Phone 3123
East Side Square

MOTEL MILROY

MILDRED AND ROY PICKEN, Props.

Rts. 121 and 32

Box 266

Sullivan Ill.

L. W. McMullin Funeral Home

Dial 4100

Sullivan, Ill.

INSURANCE CLAIMS

—can be handled without red tape or delay when you insure with your local independent agent.

Wood Insurance and Realty Co.

7 West Harrison St. — Sullivan

"Y" Drive-In

Air Conditioned Dining Room
Seating Capacity 100

**Chicken Family Style
Steaks, Chops, Seafood**

Jct. 121 and 32

Hardware State Bank

LOVINGTON, ILL.

**Always
Courteous Service**

Grow—Grow—GROW with



Liquid...

FERTILIZER

The largest producers of complete Analysis Liquid Fertilizer in the U.S.

PLANTS LOCATED AT

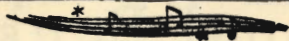
SULLIVAN—HARVEL—ROCHESTER—EL PASO, ILLINOIS

Last Show of the Season!

**AUGUST
25-30**

THE SMASH HIT MUSICAL PLAY

"FANNY"



with **PAUL FLORES, DICK
SASSO and EDEN NICHOLAS**



PRODUCTION STAFF

STAGE MANAGER.....Bob Fahey	ASSISTANT DIRECTOR.....Guy S. Little, Jr.
ASSISTANT CHOREOGRAPHER....Betty Chambers	PROGRAM EDITOR....John Kelso
REHEARSAL PIANISTS.....	Sandra York and Pat Iocca
LOBBY DECOR AND ADVERTISING ART.....	Dick Stephens
SCENIC CREW.....	Ron Meadows and Terry Roney

Credits: Spinet pianos used through courtesy of Samuel Music Co., Effingham, Ill. Dressing rooms courtesy of Best Clinic. Fabrics by Michael Bartlett. Floral decor by Elzy's.

SHELBY'S CAFE

Smorgasbord—Short Orders

Half Block East of Southeast Corner Square

8:30 A.M. to 8:30 P.M.

**DUNSCOMB'S
FURNITURE**

Everything for the Home

NEAR THE THEATRE
SULLIVAN

Moultrie County News

FIRST in
Circulation

FIRST in
Advertising Lineage

FIRST in
News Coverage

IN MOULTRIE COUNTY

**SULLIVAN GRAIN COMPANY
ELEVATORS**

EAST END ELEVATOR.....	Sullivan
WEST END ELEVATOR.....	Sullivan
MACON GRAIN CO.	Macon
LAKE FORK ELEVATOR.....	Mt. Pulaski

Grain—Coal—Cob Litter—Mulch

First
National Bank
of
Sullivan

"Always A Friendly Welcome"

MEMBER F. D. I. C.