

Eastern Illinois University

The Keep

2004 Show Programs

2004

2004

Where's Charley?

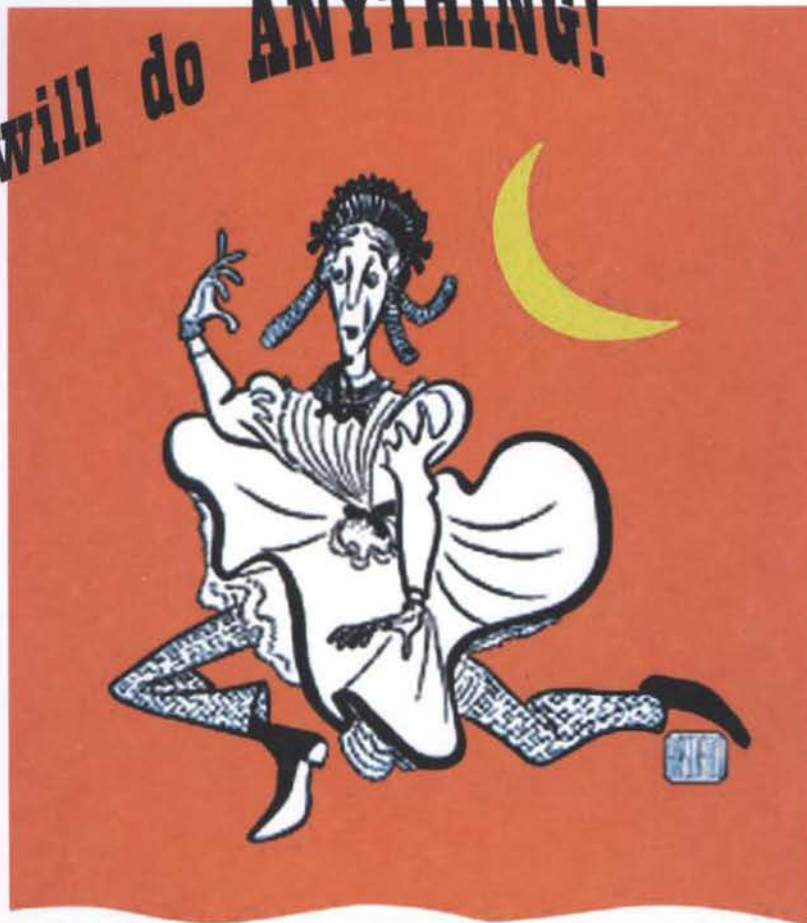
Little Theatre on the Square

Follow this and additional works at: https://thekeep.eiu.edu/little_theatre_2004_programs

The Little Theatre
ON THE SQUARE
Sullivan, Illinois

College Gents will do ANYTHING!

It's another age, across the pond, where two Oxford chaps run up against tradition when they attempt an encounter with their fair ladies, without proper supervision! Sing along with this Tony Award-winning musical jam-packed with Frank Loesser hits.



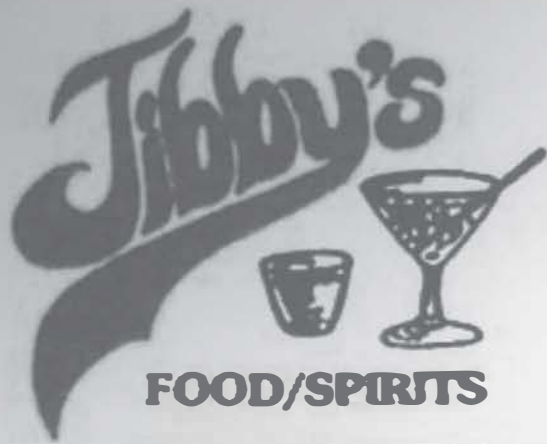
WHERE'S CHARLEY?

Executive Director
Leonard Anderson

July 28 - August 8
2004

Artistic Director
M. Seth Reines

*Named a Partner in Excellence by the Illinois Arts Council.
Member of the National Alliance for Musical Theatre and the Illinois Arts Council.
This program is partially supported by a grant from the Illinois Arts Council.*



19 N MAIN
SULLIVAN IL
728-7112 OR 728-9031



**SPECIAL DRINK
AND ENTRÉE
THEATRE
SELECTIONS**

**UNDER NEW
OWNERSHIP**



**“HOME OF THE
FAMOUS PEPPERLOIN!”**





TRACTOR ATTACHMENTS



PUSH PRODUCTS & ATV ATTACHMENTS



Agri-Fab®
303 West Raymond Street
Sullivan, IL 61951
(217) 728-8388
(217) 728-2032 FAX

SpeedEPart
the fastest way to purchase parts
www.agri-fab.com

We Believe...
in your good health.



**SARAH BUSH
LINCOLN**
HEALTH SYSTEM

www.sarahbush.org

*Here's to another successful season of
The Little Theatre On The Square!*

BRAVO!



The Arts.

They open our minds and touch our hearts.
For this, we salute them. And we support them.

TATE & LYLE

Greeting From The Executive Director

Dear Patrons:

It is with great pride and pleasure that I welcome you to our newly remodeled theatre and our new administration building. We certainly hope that you are pleased with what we have accomplished. This should make for a more comfortable environment for you when you attend our productions. It also provides for much nicer accommodations for our performers and administrative staff.



In addition, our *Applauding the Past, Directing the Future* capital campaign allowed us to expand our Education Outreach program and launch our Students Theatre Arts Reach (S.T.A.R.) touring program this past spring. We gave presentations to over 65 schools from Springfield to Paris and Rantoul to Vandalia and we played to over 21,000 students.

We are most grateful to the many who have contributed to make both the building project and the touring programs successful. The State of Illinois provided a signature grant of \$400,000 to get the ball rolling. The City of Sullivan granted \$120,000 from TIF funds. We received generous contributions of \$250,000 from Archer Daniels Midland for the building and \$150,000 from Consolidated Communications for the S.T.A.R. program. And we have received many additional donations ranging from \$5,000 to \$50,000 from other area businesses and gifts from over 300 individual patrons and families ranging from \$25 to \$50,000. Thank you! Thank you! Thank you!

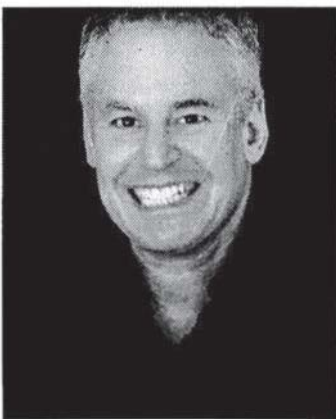
The Little Theatre On The Square is entering into a new era in its history of providing quality professional theatre to you. We promise that we will do our utmost to live up to the confidence in us that you have shown through your continued patronage and generous donations.

Sincerely,

Leonard A. Anderson

Leonard A. Anderson
Executive Director

M. Seth Reines Artistic Director



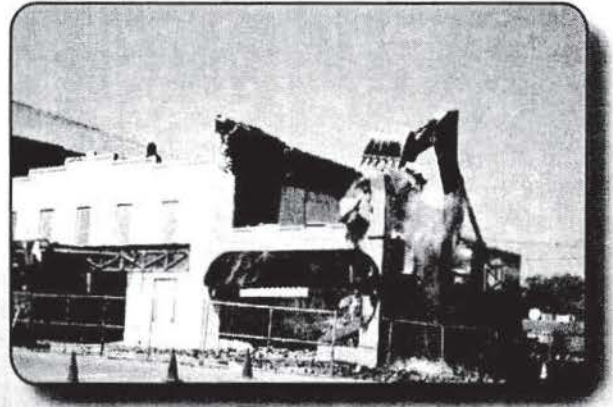
M. Seth Reines, Artistic Producer of Arizona's Broadway Palm West, is delighted to return to The Little Theatre for his 18th season as Artistic Director. He has directed over 350 productions for stage and television, including national tours of *Sunday In The Park With George* and *South Pacific*, working with such stars as Emily Loesser, Angela Lansbury, Chita Rivera, Oprah, Leslie Uggams, Jerry Herman, Tom Wopat, and Peter Allen.

Seth staged the world premieres of *Monky Business*, *Magic Place*, and *Body Parts*; the American revivals of *The Red Mill* and *Knickerbocker Holiday*; the American premiere of *Anne Of Green Gables*; the Midwestern premiere of *Closer Than Ever* and the West Coast premieres of *Victor Victoria* and *Ragtime*. Next season, he will direct the Southwest premiere of *Miss Saigon* and *Aida*.

Winner of Cleveland Drama Critics and San Francisco Drama Logue awards, Seth is one of the creators of the musical comedy *Monky Business*, which opened at Galveston's Grand Opera House in 1995 and has now played in over 250 cities around the world.

Seth is excited to be a part of The Little Theatre's Grand Reopening, working with this enormously talented company of old and new friends. Thank you for supporting live professional theatre and all the arts in your community.

The Little Theatre
ON THE SQUARE
 Sullivan, Illinois



Join us in celebrating our 47th year in our new theatre!

2004 SUMMER SEASON

HELLO, DOLLY!

June 9 - 27

THE BOY FRIEND

June 30 - July 11

9
 nine
 THE MUSICAL

July 14 - 25

Where's Charley?

July 28 - August 8

SEUSSICAL

August 11 - 22

Celebrating the future of live professional theatre in Sullivan, Illinois.

Theatre for Young Audiences
 June - Cinderella
 July - Pinocchio
 August - Alice in Wonderland

Member, National Alliance for Musical Theatre
 Programs are supported, in part, by the Illinois Arts Council
 Named a Partner in Excellence by the Illinois Arts Council



ADOPT-A-SEAT PROGRAM

As part of our **Applauding The Past-Directing The Future** Capital Campaign, we are now presenting, for the first time in our history, the **Adopt-A-Seat Program**.

Comfortable and attractive brand new seats have been installed in our renovated theatre. This is something that many of our patrons have requested, and we are sure that you will be pleased with our new seats!

We have one simple request. Joining us, along with our other many patrons, and make your name a part of Little Theatre history. We have a starring role for you with no audition! Help us to complete our Capital Campaign by participating in the **Adopt-A-Seat Program**.

We are asking you to **Adopt-A-Seat** by making a gift, or pledge, of \$1,000 per seat. This amount can be paid over a three-year period if you wish. You may adopt as many seats as you like.

An attractive seating chart mural is displayed in our theatre lobby with **Adopt-A-Seat** patrons' names inscribed.

So, won't you please act now to play an important role in making our vision for The Little Theatre On The Square a reality. **Adopt-A-Seat**, and help us **Applaud the Past and Direct the Future!** Thank you.

PRODUCTION SUPPORT AND DONATIONS

The Little Theatre On The Square depends on the generosity of individual donors, corporations, foundations and government agencies to support its productions and programs. These donations allow us to enhance the quality of our productions while keeping admissions affordable for all patrons.

INDIVIDUAL DONATIONS

Include a donation with your season ticket or single ticket order. Gifts to The Little Theatre On The Square are tax deductible within the limits of the law. Donations can be made by check or charge to Mastercard, Visa, American Express or Discover.

CORPORATE SPONSORSHIP

Is your company looking for a way to promote and support the arts in this area? Then contact our Executive Director about sponsorship of our mainstage shows.

*For more information concerning your company providing matching funds,
please contact us personally at (217) 728-2065.*



**Your
New
Choice
For
PBS**



"EVENING AT POPS"

For more than three decades **EVENING AT POPS** has entertained American audiences with an array of music – from Tchaikovsky to Sondheim. Conductor Keith Lockhart and the Boston Pops Orchestra continue the tradition in their 34th season on PBS, featuring five new programs and four encores of past broadcasts.

Airing Saturdays at 7:00 pm beginning July 3rd.

WEIU...Your New PBS Choice For Musical Entertainment

Channel 51 * Mediacom Channel 6 * Insight Communication Channel 14

WEIU TV

600 Lincoln Ave.

Charleston, IL 61920

(217)-581-WEIU or

1-877-PBS-WEIU

www.weiunet

Performance Company Profiles



Paul Aguirre

Paul Aguirre (Horton/Choreographer) ~ is very excited to be a part of The Little Theatre's production of *Seussical*. Director and Choreographer credits include: *A Chorus Line*, *Romance/Romance*, *Company*, *Fame*, *How To Succeed...*, *Bebes In Arms*, *The Wiz*, *Leader Of The Pack*, *Peter Pan*, *Wizard Of Oz* and *LYZ!* an original musical at the Beckett Theatre in NYC. National Tours: *Seussical* with Cathy Rigby, *The Who's Tommy* (Uncle Ernie), *My Fair Lady* and *How To Succeed...* Regional and Dinner Theatre: *Smokey Joe's Cafe*, *Songs For a New World*, *The Wiz* (Lion), *Children Of Eden* (Father), *Annie Get Your Gun* (Sitting Bull), *Once On This Island* (Agwe), *Footloose*, *Copacabana*, *Crazy For You*, *7 Brides For 7 Brothers*, *The Music Man*, *Pirates of Penzance* and *RENT* (for the Jonathan Larson performing arts fund). Paul would like to thank Ma for all of her love and support.



Austin Tyler Albright

Austin Tyler Albright is excited to be making his debut at The Little Theatre On The Square. A native of Carmel, Indiana, Tyler is a Senior perusing a Bachelor of Arts in Theatre and a Minor in Dance at Millikin University. While at Millikin, he has been seen in *No, No, Nanette*, *Sweet Charity*, *The Pirates of Penzance*, *The Lucky Penny* and was the Swing for *Jekyll and Hyde*. Professionally, Tyler has toured with the children's theatre production of *Pinocchio* and danced with Gregory Hancock's Modern Dance Theatre in *Altered States: Creativity Under the Influence*. He would like to thank his family and close friends for their undying love and support.



Barry Anderson

Barry Anderson is thrilled to be making his debut at The Little Theatre On The Square with the final two shows of our season. Barry comes to Sullivan directly from the Dutch Apple Dinner Theatre's production of *Bye Bye Birdie*, in which he played Albert. Earlier this spring, he enjoyed a successful run of *Hot 'n Cole* at Allenberry Playhouse. Regional credits: *Crazy For You* (Bobby), *George M!* (George), *Forever Plaid* (Sparky), *Honk!* (The Cat), *Singin' in the Rain* (Cosmo), *The All Night Strut*, and *The Civil War*. National Tour: *My Fair Lady*. A Wisconsin native, Barry is a music graduate of UW-Eau Claire, and as always, he sends thanks to his mom, dad and sister.



Braydon Babbs

Braydon Babbs is excited to be returning to The Little Theatre stage. He performed here in 2003 as the Mayor in *The Music Man*, *Junior* under the direction of Marie Jagger-Taylor. TLTOTs has also seen him in *Snow White & the Seven Dwarfs*, *An Old Fashioned Christmas* and *School House Rock Live! Jr.*, where he played the "Bill". Braydon will be in sixth grade this fall attending Mattoon Middle School. He has also done community service acting at the Cat Theatre in Charleston, Illinois. There he played Kai in the *Snow Queen* and was also seen in *St. George & the Dragon at Christmas Tide*. Braydon enjoys reading, singing, dancing, playing trombone, collecting Yugioh, writing plays and spending time with his family and friends.



Located in Amish Country
 208 West Jackson Street
 Sullivan, Illinois 61951
 Phone - 217-728-3166

Visit our web page
www.osmarket.com



- ▶ Restaurant & Bakery
- ▶ Amish Oak Furniture
- ▶ Gifts & Collectables

Market Hours

Monday - Thursday 10 am. - 7 pm.
 Friday & Saturday 10 am. - 8 pm.

Restaurant Hours

Monday - Thursday 11 am. - 7 pm.
 Friday & Saturday 11 am. - 8 pm.

Saturday Only

Breakfast Buffet 7 am. - 10 am.
 Closed on Sunday

Famous name brand

Gifts & Collectibles



Oak - Cherry
 Hickory - Maple
 Complete Line
 Of Furniture

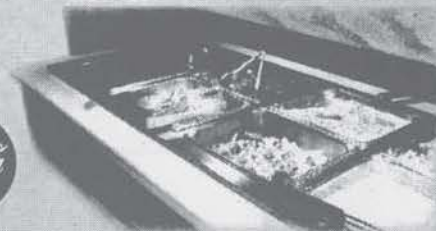


Dining Room, Bedroom, Office, Gliders, Book Cases,
 Entertainment Centers, Curio Cabinets & Much More...



Amish Style Buffet

Our buffet hosts Amish and Mennonite recipes. We feature: fresh never frozen chicken, casseroles, shrimp, walleye, roast beef, real mashed potatoes, noodles, fresh vegetables, home baked bread, rolls and more.



Performance Company Profiles



Andy Bero

Andy Bero is thrilled to return to Sullivan, after being a company member of the 2003 season. He was last here playing Frederick in *Pirates of Penzance* and Doody in *Grease*. His favorite roles include Simon Bliss in *Hayfever*, Daddy Brubeck in *Sweet Charity*, and Bobby in *Cabaret*. Following his stint at Sullivan, Andy will be joining the tour of *Miss Saigon* with the Prather Family Theatres. He holds a BFA in Musical Theatre from Millikin University, where he received the J. Ben Wand Prize for "Excellence in Acting". He would like to thank his Mother, Flian, and the girls for their constant support!



Sierra Boggess

Sierra Boggess is thrilled to be returning to TLTOTS! Last summer she was seen as Charlotte in *Charlotte's Web*, Mabel in *Pirates of Penzance*, and Rizzo in *Grease*. Sierra just graduated from Millikin University with a BFA in Musical Theatre. Some of her favorite roles at Millikin include Charity in *Sweet Charity*, Sorel in *Hayfever*, Olivia in *Twelfth Night*, and Sarah in *Guys and Dolls*. She was also the 2004 Young Artist's Concerto Competition winner in vocal music and a recipient of the Ron Smith award for excellence in Musical Theatre. In 2001 Sierra was an apprentice at the Broadway Theatre Project in Tampa, Florida. Sierra would like to thank everyone who has helped her be where she is today.



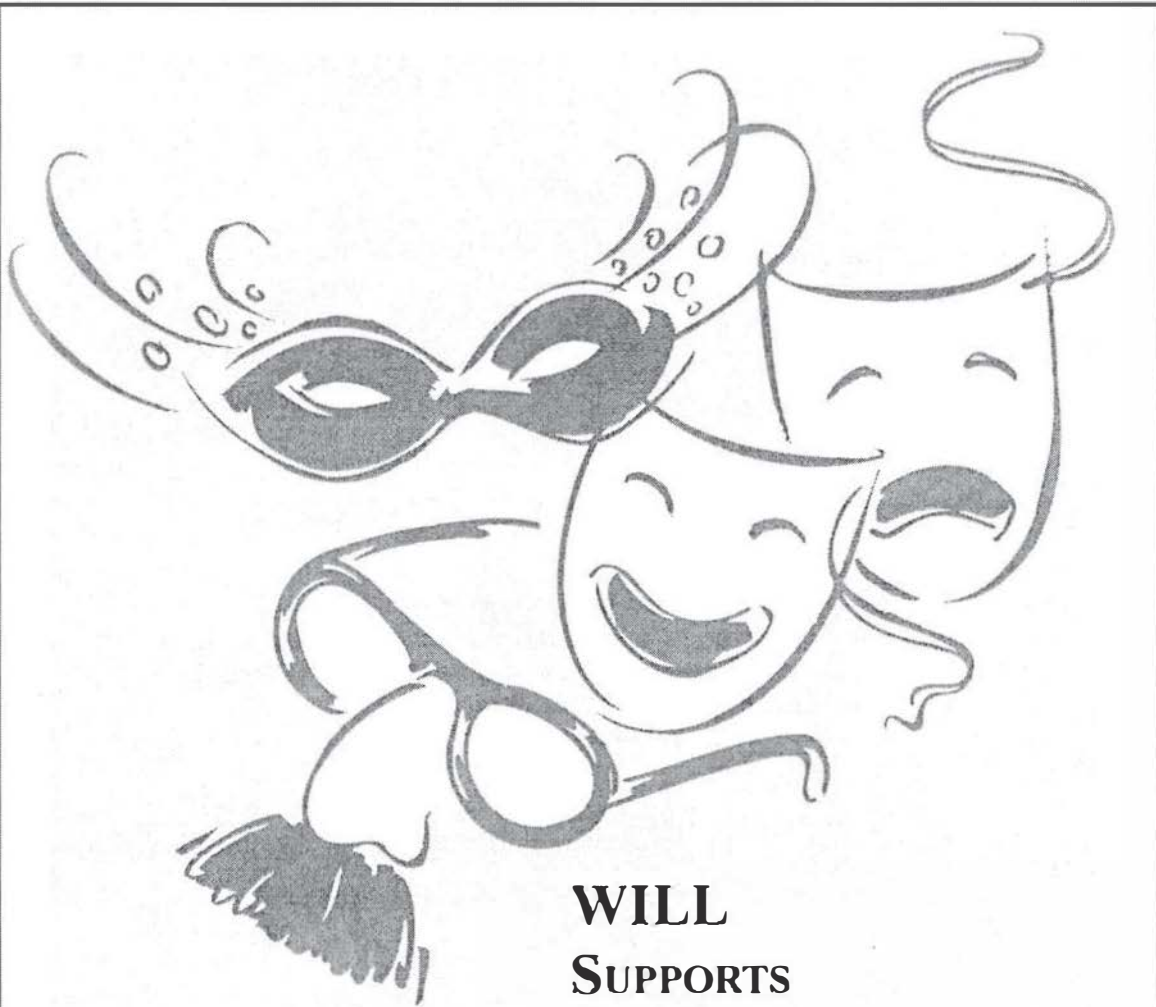
Dick Borders

Dick Borders is very pleased to be returning to the LTOTS for this season's opening show. A Decaturite, Dick has appeared in numerous productions on central Illinois stages over the years. His most recent performing endeavor has been playing bass with Decatur's hottest new Rock and Roll band, Soul Purpose. Dick is especially excited to be part of the first season in the new and improved Little Theatre facility. Thanks to the audience for supporting live theatre in central Illinois!



Matt Burns

Matt Burns comes to the theatre from a long and hard junior year of high school in Sullivan. While in school, Matt participated in show choir where he got the chance to go to the Nashville, Tennessee show choir nationals and perform on the Grand Old Opry stage twice. It is there that the Sullivan Singers were placed 2nd overall. Last year, Little Theatre patrons saw Matt in *The Pirates of Penzance*. Some other credits include: *School House Rock Live! Jr.*, *State Fair*, *The Music Man*, *Seven Brides For Seven Brothers*, and *Oliver*. Matt would like to dedicate this performance to Wyatt, Schuyler, Michel, Katie, Brett, Jen, Mom and B. Thanks for being there. Enjoy the show!



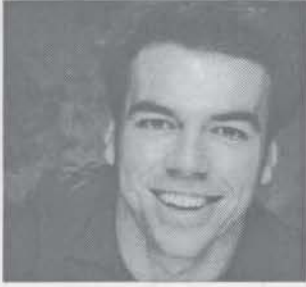
WILL
SUPPORTS
GREAT
PERFORMANCES
BY
THE LITTLE
THEATRE ON
THE SQUARE



www.will.uiuc.edu

Performance Company Profiles

Nicholas Dalton



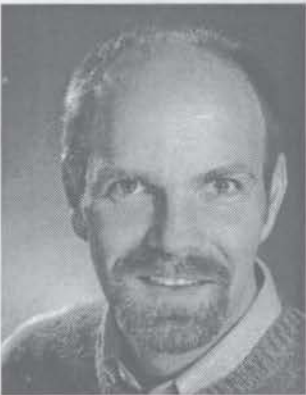
Nicholas Dalton is tremendously ecstatic to be able to be back in Sullivan for another summer. Some of his LTOTS Greatest Hits include *Grease*, *I Love You*, *You're Perfect*, *Now Change*, *Pirates*, *Oklahoma*, *Seven Brides for Seven Brothers*, and the infamous Cowboy Bob in *Footloose*. NY Regional Credits include The Barn Theatre, Cherry County Playhouse, Derby Dinner Playhouse, Gateway Playhouse, *Glory Of Richard Rodgers* at Lincoln Center with Karen Ziemba and George Dvorsky, *Tribute To Adolph Green* alongside Betty Comden, and the Off Broadway flop *Soar Like An Eagle*. He comes to Sullivan straight from the European Tour of *Hair* where he has been "bearing it all" as Berger and later this summer will be starring at the Mason Street Warehouse in the premiere of the new musical *Wicked City*-written by the team behind *Rhythm Club* and the newly awaited adaptation of *The Wedding Singer*. Love to the folks and a prayer for his Bro and the fellow boys in service.

Jeffrey Farber



Jeff Farber is very happy to be making his professional debut at The Little Theatre On The Square after just finishing his sophomore year as an Acting Major at Millikin University. While at Millikin, Jeff has appeared in *Hayfever*, *Proof*, *Jekyll and Hyde*, as well as numerous studio productions. He is thrilled to be working with such a great group of people this summer! Jeff would like to thank Marie for this opportunity, his fantastic parents for their support, his friends for their love and God for helping him so much along the way.

Michael Haws



Michael Haws is very excited to be a part of this first season in the beautiful, renovated Little Theatre On The Square. He got into the Christmas spirit early this past year, performing in a *Fireside Christmas* for The Fireside Theatre in Wisconsin. (First performance was October 2.) He stayed there until mid-February, acting in their next production of *I Do! I Do!* Michael, then, went to Pennsylvania, where he was cast in the role of Ko Ko in *Hot Mikado* for The Fulton Opera. He just returned from Mesa, Arizona, where he directed *The Little Mermaid* for Broadway Palm West. Thank you for supporting this great theatre!

Tori Hicks



Tori Hicks hails from the northwest suburbs of Chicago. She most recently appeared in the production of *Showboat* at the Broadway Palm West in Mesa, Arizona and at the Dutch Apple Dinner Theatre in Lancaster, Pennsylvania. Regionally she has been seen in such productions as *Footloose* and *Copacabana*. Tori graduated from Illinois State University with degrees in Vocal Performance and Music Education. She would like to thank her friends and family for their undying support and her husband for his constant belief in her dreams and the endless sacrifices he makes to help her achieve them.



The Sullivan Pharmacy

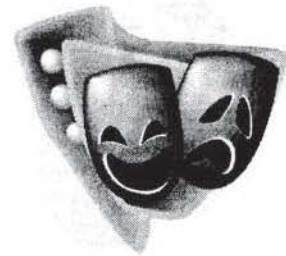
217-728-2331

Toll Free 1-800-422-2364

102 East Harrison • Sullivan, IL 61951

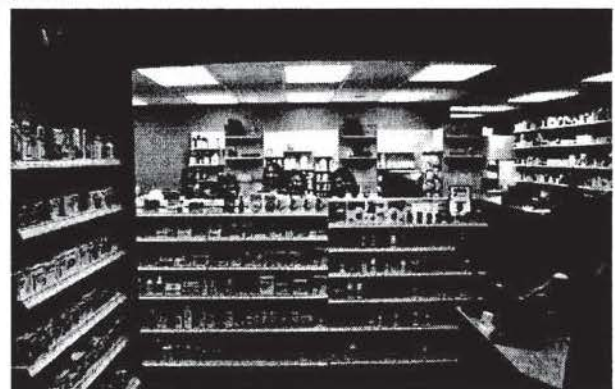
- Bio-Identical Hormone Replacement
- Chronic Pain Treatments
- Transdermal & Topical Gels
- Sublingual Drops
- Newly Expanded Medical Equipment Department, including:
 - Incontinence Products
 - Orthotics
 - Jobst Support Supplies
 - Ostomy Supplies

The Sullivan Pharmacy wants to congratulate the Little Theatre on its Grand Reopening, and we wish them great success in the upcoming summer season! Both the Little Theatre and The Sullivan Pharmacy have a new look for 2004! Come see all of the changes!



We're located on the northeast corner of the square in Downtown Sullivan

Tony Jones, R.Ph.
Carolyn J. Jones, R.Ph.

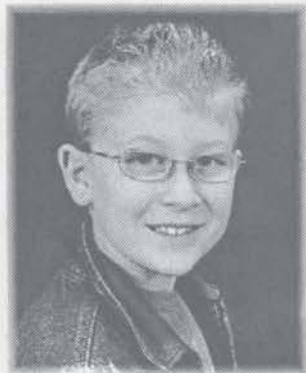


Performance Company Profiles



Dawn Levine Hollis

Dawn Levine Hollis is thrilled to be back on stage after spending the last several years mainly directing and choreographing (over 50 musical productions!) Dawn's acting career has spanned regionally throughout the United States and Canada including the National Tour of *Gypsy* in which she played Dainty June. Other favorite roles include Billie Dawn in *Born Yesterday*, Adelaide in many productions of *Guys and Dolls*, and a year as Lina Lamont in *Singing in the Rain*. Her absolute favorite role to date however, is that of wife to musician Steve and mother to actors Mitch and Melody. She is so proud that both of her children share her passion for theater and she loves nothing more than watching them perform. Special thanks to Seth and Marie for the rare and wonderful opportunity to be sharing the stage with her son Mitch!



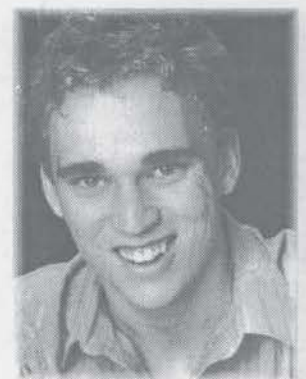
Mitchell Hollis

Mitchell Hollis is very excited to be making his LTOTS debut as Jojo in *Seussical*! He is eleven years old and lives in Lake in the Hills, Illinois. Performing since the age of six, Mitch has over 20 productions to his credit. This past year, Chicago audiences have seen him as Karl Stossel in Bailiwick Repertory's *The Christmas Schooner*, Jason in CMTS's *March of the Falsetto's*, on ABC as a performer in the nationally televised 2003 Thanksgiving Day parade, as well as in an independent film. Mitch is an accomplished juggler, who studies voice, tap, and trumpet. He is an avid baseball player and enjoys playing disc golf with his dad. Mitch is a straight A student and older brother to Melody. He would like to dedicate this performance to his Papa and Bubbie, who always tell him - "Anything's Possible!"



Marie Jagger-Taylor

Marie Jagger-Taylor resides in Macon, Illinois with her agrarian husband Jody and their 3 blessings, Caleb (11), Emma (7) and Gabriel (4). She is Director of Education for The Little Theatre On The Square S.T.A.R. (Students Theatre Arts Reach) Program where she manages and instructs Dance and Drama Classes for students 18 months to adult and is director of the touring program dedicated to bringing Arts into Education. Marie is also a freelance Director/Choreographer with regional credits including *Annie*, *Fiddler*, *Grease*, *The Music Man*, *Oliver!*, *Oklahoma!*, *Seven Brides*, *The Wizard of Oz*, and numerous Children's Theatre Productions. A member of Actor's Equity, Marie's past LTOTS acting credits include Cassie in *A Chorus Line*, Maria in *West Side Story*, Nellie in *South Pacific*, Nora in *Victor Victoria*, Sister Mary Amnesia in *Nunsense!* and the pregnant Mrs. MacAfee in *Bye, Bye Birdie!* Marie is thrilled to be part of this summer season. Special thanks to Seth, Jody and family for making it all possible. Enjoy!



Alex Jorth

Alex Jorth has just completed his sophomore year as a B.F.A. Musical Theatre major at Millikin University. There, he has appeared in *A Little Night Music*, *Sweet Charity*, *Jekyll & Hyde*, *No, No Nanette*, *The Magic Flute*, *Equinox: A Concert of Dance* and many other productions. He is very much looking forward to spending the upcoming semester abroad in London, England!! Professionally, Alex has performed as a soloist and featured dancer at Valleyfair Amusement Park in Shakopee, Minnesota. Originally from Davenport, Iowa, he has toured two summers with Celebration Iowa Singers and Jazz Band: A Project of Luther College. Alex is thrilled to be making his Little Theatre debut and would like to thank his devoted, inspiring parents for all of their love and support.

Looking forward to another season of
great entertainment in a great-looking theatre!

Auto | Home | Life | Health | Farm



Steve Bonnett
1102 W. Jackson
Sullivan, IL 61951
217-728-2591



Gene Bryant
1102 W. Jackson
Sullivan, IL 61951
217-728-2591



Mark Luce
205 E. Commercial St.
Strasburg, IL 62465
217-644-2203

COUNTRY

Insurance & Financial Services

Pearman

PHARMACY



is honored to play a part in supporting the

**APPLAUDING
THE PAST.
DIRECTING
THE FUTURE.**

Capital Campaign

116 W. Court St.

Paris, IL 61944

South Side of the Square
Phone: 217-465-8455

STEVE BENEFIEL, R.PH.

TOM HEBERMEHL, R.PH.

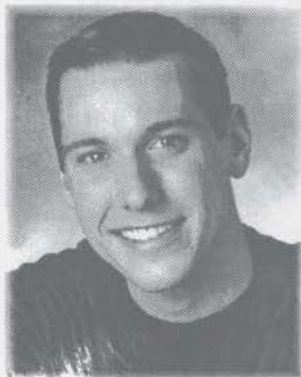
DUSTIN MELTON, R.PH. • DENISE ALLANSON, R.PH.

Performance Company Profiles



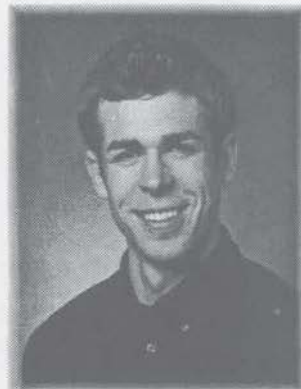
Bryan Lefeber

Bryan Lefeber is very excited to be making his debut at The Little Theatre On The Square! A native of Minden, Iowa, Bryan is a senior Musical Theatre Major at Millikin University where he has performed in *Trial by Jury*, *No, No, Nanette* (Tom), *Jekyll & Hyde*, *Sweet Charity*, and *A Little Night Music* (Henrik). Professionally, Bryan has been seen in *Victor Victoria*, *Mame* (Patrick), *A Flea in Her Ear* (Camille), and *Kiss Me Kate* (Gremio) at the Clinton Area Showboat. Bryan would like to thank his amazing family, Don, Mo, and Sara!



Ian Liberto

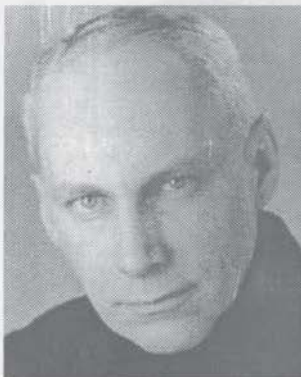
Ian Liberto is happy to be returning to the new and improved stage of The Little Theatre On The Square! Last summer you may remember him as Will Parker in *Oklahoma!* He is about to enter his last year at Millikin University where he will receive his BFA in Musical Theatre with a minor in dance. His Millikin credits include *No, No Nannette*, *Guys and Dolls*, *Sweet Charity* and *Jekyll & Hyde* (Simon Stride). He would like to thank Andy, and his parents for their unrelenting support and love! Enjoy the show!



Anthony Majewski

Tony Majewski is thrilled to be back for another summer at TLTOTS. This fall he will be starting his senior year at Millikin University completing his BFA in musical theatre and minor in dance. At Millikin, he performed in *No, No Nanette*, *Jekyll & Hyde*, *Sweet Charity*, and just finished *A Little Night Music* as a member of the Quintet. A few of his favorite roles that he has played are Bud Frump, in *How to Succeed...*, Snoopy, in *You're a Good Man Charlie Brown*, and Sir Evelyn in *Anything Goes*. He would like to thank all his friends for their support, including those who travel far and wide and of course his mother for always being there and making him pumpkin pies on demand.

Patrick McCarthy



Patrick McCarthy returns for his 9th season at TLTOTS after haunting the stage in *Grand Hotel* here last summer. Favorite roles here include Scrooge in *Christmas Carol*, Bernie Buxbaum/Mrs. Eggleston in *Little Me*, Crisparkle in *Drood*, Pickering in *My Fair Lady*, Charlie in *Annie Get Your Gun*, Selsdon in *Noises Off* and Richard/Max in *Cabaret*. His string of directing credits at TLTOTS include last summer's *Pirates of Penzance* and *I Love You, You're Perfect, Now Change*, plus *42nd Street*, *I Do! I Do!*, and *The Odd Couple*. Calling New York home now, he's been seen there in episodes of *Sex & The City*, *Law & Order*, *Spin City* and on *Ed* as a British Revolutionary War General, as well as in Woody Allen's *Celebrity* and *Picture Perfect*, and as Ruth in *Pirates of Penzance*, Dad in *The Sum Of Us*, Jack in *The Weir*, and Antonio in *Much Ado About Nothing*. Regionally, he's been seen as Parolles in *All's Well*, Friar Laurence in *Romeo & Juliet*, Quince in *Midsummer Night's Dream*, Cornwall in *King Lear*, Backbite in *School For Scandal*, Quixote in *Man of La Mancha*, Leslie in *Seascape*, Harry in *Company*, Gangster #1 in *Kiss Me Kate*, Brian in *Joe Egg* and in countless *Christmas Carol's* as Scrooge.



Star Performers

THANKS FOR ANOTHER GREAT SEASON!

**While you're in Sullivan, use our
conveniently located drive-up ATMs.**



**First National Bank
OF SULLIVAN**

1 South Main Street
Sullivan, Illinois 61951



Mooney Motors



**Rt. 16 & Rt. 130 • Charleston, Illinois • mooneymotors.com
217/345-3673 • Fax: 888-684-3673**

Performance Company Profiles

Amy Lyn McDonald



Amy Lyn McDonald is thrilled to make her Little Theatre debut! A native of central Illinois, she holds an M.F.A. in Dance from the University of Illinois. West Coast credits include: Ruby in *Dames at Sea* (California Conservatory Theatre); Claire in *On the Town* (Foothill Music Theatre); Aimee Semple McPherson in *As Thousands Cheer* (Marin Theatre Company); Kathy in *Singin' in the Rain*, Flora in *Phantom*, *Evita* with Larry Fuller, *Joseph...*, *Sound of Music*, and *Victor*; *Victoria* (all at American Musical Theatre-San Jose). Amy now resides in Chicago and has performed as Jess in *Crazy for You* (Drury Lane); Dolly in *Showboat*, Sylvia Potter-Porter in *Annie Get Your Gun*, Virginia in *Pajama Game*, *Victor Victoria* (all at Marriott Theatre-Lincolnshire); *Meet Me in St. Louis* (Theatre at the Center); Mary Elizabeth in *Little Mermaid* (Chicago Shakespeare). Thanks to Seth and love to Tom, Mom, Dad and family.

Anna McNeely



Anna made her professional debut at The Little Theatre On The Square in *The Great Waltz* in 1971 and appeared in productions through 1976. In the last three decades, Anna has collected a lengthy list of accomplishments and performances across the country. Making her Broadway debut with Donny Osmond in *Little Johnny Jones*, she then created the role of Jennyanydots in the original Broadway production of *Cats*, the longest-running show in the history of Broadway. After nearly seven years in *Cats*, Anna departed the hit to become a sensation as Electra in the highly successful revival of *Gypsy* starring Tyne Daly. Anna performed with *Gypsy* for nearly three years on Broadway and three on the road. Later, she was featured in the same role in regional theatre productions starring Betty Buckley, Linda Lavin, Jo Anne Worley, and Lanie Kazan. Anna was the only member of the Broadway cast to be asked to recreate her role in the Bette Midler film version of *Gypsy*, which was seen on network TV. Playing "Mrs. Potts," Anna was an original member of the Broadway production of Disney's *Beauty and the Beast* and was in the first National Tour of that show. Anna has toured with several other National Productions, including *The Music Man* with Tony Randall and *Camelot* with Rock Hudson. When Anna is not performing, she lives in Florida with husband, Steve Roland. She is Assistant Director of Music at the First United Methodist Church at Stuart, Florida, and this fall will be teaching Master classes at the Florida Arts and Dance Center. She is thrilled to be back at TLTOTS where it all began.

Ann Morrow



Ann Morrow is so happy to be a part of the grand re-opening season. Wow! First the new Super Menard's in Decatur and now this! In another life, Ann teaches at Millikin University in the Theatre Department and the School of Music; she works not for the money, but for the personal fulfillment of modelling her fabulous wardrobe. She is very grateful for dear friends, wonderful family, amazing students, and the joys of being Lauren's mom.

Elizabeth Pugh



Elizabeth Pugh is happy to be returning to The Little Theatre On The Square with her role in *Hello, Dolly!* She has been seen previously on TLTOTS stage in *An Old Fashioned Christmas*, *HONK!*, *Annie* and *The Sound of Music*. Most recently Elizabeth played the role of Marion in *The Music Man, Jr.* performed by The Little Theatre's Drama Outreach Program. She will be beginning her junior year at Mattoon High School where she has been president of her class and involved in student council for the past two years. Elizabeth stays very active in dance, voice and drama lessons and wants to give a special thanks to all of her instructors. Elizabeth also wants to thank her family for always encouraging her to "Reach for the Stars!"

BODY ON E

Salon & Day Spa

1999 **5th** 2004
Anniversary

Family Salon & Massage Therapy Services
417 S. Hamilton St., Sullivan, IL 61951
217-728-9134



First Neighborhood Bancshares, Inc.

Checking — Savings — Certificates of Deposit
Overdraft Protection — Credit & Debit Cards
Consumer & Commercial Loans
Secondary Market Mortgage Loans
Personal & Business Accounting
Income Tax Filing

The First National Bank in Toledo
201 N Meridian Toledo — (217)-849-2701

The Greenup National Bank
705 E Cumberland Greenup — (217)-923-3125

First National Neoga
223 E 6th Street Neoga — (217)-895-5800

First National Charleston
1415 18th Street Charleston — (217)-345-4060

First National Casey
107 NW 1st Street Casey — (217)-932-4048

First National Bank of Newman
511 S Broadway Newman — (217)-837-2491

*Branches of
The First National Bank in Toledo*

Online Banking

www.firstneighbor.com



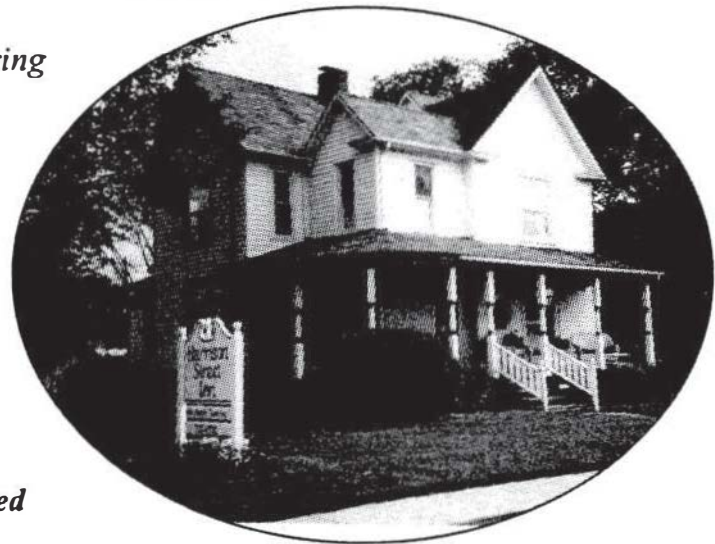
Harrison Street Inn

Offering Spacious Rooms Each Featuring

- Private Bath & Hairdryer
- Cable TV & Refrigerator
- Private Telephone Line
- Coffee Maker & Supplies
- Private Entrance

*201 E. Harrison Street
Sullivan, Illinois 61951
217-728-4550*

Discover, Visa and Mastercard Accepted



*One Block East of The Little Theatre On The Square
Owned and Operated by Dr. Tom & Emilee Best*

Performance Company Profiles

Cheryl Ann Sanders



Cheryl Ann Sanders is honored to return to TLTOTS after her memorable performances last season as Gertie "the girl with the laugh" in *Oklahoma!* and Jan in *Grease*. Cheryl received her BFA in musical theatre performance from Webster University & Conservatory. Her other favorite roles include "Anytime" Annie Reilly in *42nd Street*, Lucy in the revival of *You're a Good Man Charlie Brown*, Sarah Brown in *Guys & Dolls*, Fastrada in *Pippin* and the dual roles of Lucetta and the Female Outlaw in the midwestern premiere of *Two Rockin' Gents* at the Browning Mainstage theatre in St. Louis. Originally from Evansville, Indiana, she has also been seen guest teaching and choreographing for several high schools in Indiana and Florida. She would like to thank her family for all of their love and support. She is truly blessed to have them all! "I'm takin' no prisoners!"

Edward Schnecker



Eddie Schnecker is excited to be performing here at The Little Theatre. He just finished a run of *Show Boat* with the Prather Family of Theaters, in which he played the role of Steven Baker. Since graduating from Catholic University, Eddie has portrayed Lt. Cable in *South Pacific* starring George Hearn and Liz Callaway, Doody in *Grease*, Anselmo in *Man of La Mancha*, and an Apostle in Westchester Broadway Theatre's *Jesus Christ Superstar*. Other favorite roles include Cinderella's Prince in *Into the Woods*; Lt. Albert Lennox; *Secret Garden* and Dick, *Dames at Sea*. Theatre has brought Eddie to New York, Virginia, Maryland, Maine, Arizona, Pennsylvania, New Jersey, Ohio, London and now Illinois. He thanks his family and friends for their love and support.

Sharon Slaughter



Sharon Slaughter is proud to return to The Little Theatre On The Square's mainstage. In the past several years, she has performed in several mainstage and children's productions. Some of her favorite roles have been Bagheera in *The Jungle Book*, Queen Eleanor in *Sleeping Beauty*, Miss Watson and the Strange Lady in *Big River*, Maude Dunlop in *The Music Man*, Edith in *Jake's Women*, Grace Kimbrough in *Never Too Late* and Alice Shoemaker in *A Small Town Christmas*. Most recently she has portrayed Hilda in *Accidental Friends*, performing in schools throughout the region in TLTOTS's new S.T.A.R. touring company. In addition to theatre, Sharon has co-produced a Christmas CD and is currently working on a CD of original music with artists in Michigan. She also serves as a cantor at St. Columille Church and substitute teaches at area schools. She enjoys playing her guitar and singing with her children and exuberant grandchildren. Sharon resides in Sullivan where she taught special education for fourteen years. She thanks "Sam," Seth, Marie, and Lenny along with her children and grandchildren for their faith in her. Dreams really do come true.

Angela Smith



Angela Smith is thrilled to spend her summer with The Little Theatre On The Square. She is a recent graduate of Millikin University with a major in Musical Theatre and a Minor in Dance. Professionally, she has performed at the Wagon Wheel Theatre in Warsaw, Indiana and at Millikin has been in *A Little Night Music*, *Sweet Charity*, *Tartuffe the Opera*, and *Into the Woods*. Other favorite roles outside of Millikin include the Narrator in *Joseph...*, Tuptim in *The King and I*, and Rosie in *Bye Bye Birdie*. Angie would like to thank her family and friends for the never-ending support to fulfill her dream of performing.

The Sullivan Area Chamber of Commerce is organized for the purpose of advancing the commercial, industrial and civic interest of Sullivan, Illinois and its trade area.

- ★ Annual Dinner
- ★ Welcome Baskets
- ★ Golf Outing
- ★ Safe Trick or Treating
- ★ Christmas Parade & Santa's Workshop
- ★ Member Meals/After Hours
- ★ Annual Scholarship
- ★ Gift Certificates
- ★ Ribbon Cuttings

SULLIVAN

AREA CHAMBER of COMMERCE

7 N. Main • Sullivan, Illinois 61951
 Ph. 217-728-4223 • Fax 217-728-4064
 www.sullivanchamber.com • Email: Sulcha@egix.net

Sullivan, IL

Meadow Rue & Say CHEEZ

- Gifts ■ Home Decor
- Scrapbooking ■ Country & Primitive
- Stamps ■ Stencils ■

"Crop By The Hour"

Friday Night Crop ~ 5 PM - Midnight

Hours

10 AM - 5 PM ~ Mon.-Thurs. & Sat.

10 AM - 10 PM ~ Fri.

9 W. Harrison

1 block west of
The Little Theatre

FIRST TRUST BANK OF SHELBYVILLE
 a division of Bank Illinois

200 W. Main St.
 Shelbyville, IL
 217.774.5515

County Market, West Rt. 16
 Shelbyville, IL
 217.774.2400

www.shelby1.com
 Member FDIC

HUNAN

RESTAURANT



THE GOURMET
 CUISINE OF CHINA
 THE FOOD OF THE
 CHINESE EMPERORS

OPEN 7 DAYS LUNCH & DINNER
 SUN - THURS 11 AM TO 9 PM
 FRI - SAT 11 AM TO 10 PM

ALL YOU CAN EAT QUALITY BUFFET
 EVERYDAY LUNCHES & DINNERS
 MENU AVAILABLE
 PARTIES AND BANQUET ROOMS
 COMPLETE CARRY OUT MENU

234-4855

116 S. 17th Mattoon
 Across from the Phone Co.



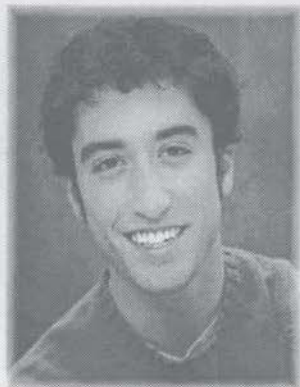
Anderson Electric
 BLOOMINGTON • DANVILLE • MATTOON • SPRINGFIELD

Electrical Contractors Serving Commercial,
 Data Com, Health Care, Industrial and Power
 Generating Customers Since 1918.

1921 Oak Ave, Mattoon, IL 61938
 Ph. 217-234-7476

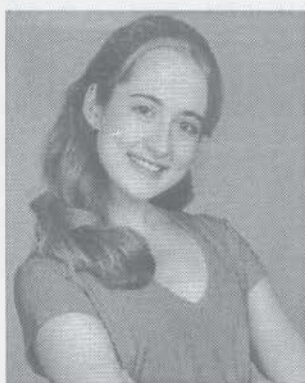
Robert J. McClain, Vice President/Mattoon
 www.anderson-electric.com

Performance Company Profiles



Ryan Strand

Ryan Strand is excited to be back for his second season at TLTOTS. He was seen last year on the Sullivan mainstage as Erik in *Grand Hotel*, Roger in *Grease*, and Ali Hakim in *Oklahoma!* as well as playing the title roles in *Aladdin* and *Beauty and the Beast* for the children's series. Ryan has just completed his sophomore year at the University of Cincinnati College-Conservatory of Music where he is pursuing a B.F.A. in Musical Theatre. This year at school he appeared in *On The Town* by Leonard Bernstein, played Ralph Werner in *Working*, and performed with the Cincinnati Pops Orchestra in *Christmas with the Pops*. Ryan would like to thank his friends and family for doing without him for yet another summer while he has the time of his life!



Natalie Wisdom

Natalie Wisdom is thrilled to be making her debut at The Little Theatre On The Square. A native of St. Louis, she has performed with many theatre companies including the MUNY and Stages St. Louis. Some of her favorite roles include, Cinderella in *Into the Woods*, Lucy in *Jekyll & Hyde* Lois in *A Chorus Line*, Ziegfeld's Favorite in *The Will Rodgers Follies*, the Tango Dancer in *She Loves Me*, and the Sad Girl in *Bye Bye Birdie*. She is currently attending Webster University's Conservatory of Theatre Arts as a Musical Theatre major.



Courtney Wolfson

Courtney Wolfson is a native of wonderful Lafayette, Indiana and is very excited to be making her debut on The Little Theatre stage! She just completed here freshman year as a musical theatre major at The University of Michigan where she could be seen in their recent production of *Jesus Christ Superstar*. Other favorite roles include Maria in *West Side Story* and Princess #12 in *Once Upon A Mattress*. Courtney would like to thank her family for all of their love and the time spent following her all around the country to watch her do what she loves most. She would also like to thank the Sullivan community for supporting The Little Theatre and making it a part of their lives!



Chrissy Wright

Chrissy Wright, a native Cincinnati, has been in the performing arts all her life. She received both her B.F.A. and M.F.A. in Musical Theatre. As a performer, over the past 14 years she has toured with the Broadway show *Ziegfeld Follies*, performed with Ben Vereen and Liza Minnelli, as well as opening on two World tours for Bill Cosby and Fred Travalena. Some of her favorite roles include: The Spider Woman in *Kiss Of The Spider Woman*, Velma in *Chicago* and Anita in *West Side Story*. As a director and choreographer, she has been all over the world. Her favorite shows include: *Closer Than Ever* in Scotland, *On the Town* in China, *Imagination* in Japan, *Joseph and the Amazing...* and *Smokey Joe's Cafe* in Las Vegas. Some of the companies she has worked for include: Signature Productions, Disney, PSFX Productions, Royal Caribbean, Peter Terhuine Presents, Jenny Wiley Theatre, Las Vegas Supper Summer Theatre, The Showboat Majestic, Naples Dinner Theatre and The Prather Family of Theaters. Chrissy is honored to be making her debut as choreographer and actress at The Little Theatre and looks forward to future shows.



On with the
show!

Wishing you a great
season



Scott State Bank

101 West Main
Bethany, IL 61914
217-665-3321

100 Main
Dalton City, IL 61925
874-2396

310 W. Jackson
Sullivan, IL 61951
728-7722

Member F.D.I.C. 

A Real
Community
Bank

Member FDIC



"Do you want star treatment?"

Visit us at **Pamida Pharmacy**

1225 S Hamilton, Sullivan, IL
217-728-4527

Free 2005 Season Tickets

Bring us a new or transferred
prescription, mention this ad
and we will enter your name in a
drawing to win a pair of
season tickets*

😊 Free mailing & delivery
🎵 Off Broadway prices

*One entry per person



Insurance Agency, Inc

13 South Main Street
Sullivan, IL 61951
(217)728-2323

113 South State Street
Monticello, IL 61856
(217) 728-2182

Website: www.cfhins.com

*Enhancing the present,
securing the future.*



47
**STELLAR
SEASONS**



*BEST WISHES TO
THE AUDIENCE, CAST AND CREW*

A B SEALS, INC.

Manufacturer of Sealant and Job Shop for
Vacuum Pressure Impregnation for porous castings
Our 37th Year in Sullivan!



RE/MAX

Crossroads Realty

Independently Owned and Operated

Jeffrey K. Speer, GRI
Broker/Owner



611 West Fayette Ave., Effingham, Illinois 62401
Office: (888) 345-0404 • Fax: (217) 347-0498
Mobile: (217)821-8144 • Residence: (217) 347-2904
Email: jeffspeer@effinghamrealestate.com

Artistic Company Profiles

Paul Aguirre

Choreographer /Seussical • Equity Actor

Please refer to biography in Performance Company Profiles.

Bernadette Brennan

Scenic Designer/Hello Dolly

Bernadette Brennan is thrilled to be designing for The Little Theatre. She earned her BA in design from Clemson University in 1996 and her MFA in scene design from Illinois State University in 2002. Design credits include *Fuddy Meers* and *Titanic* at Western Illinois University; *The Tempest* at Illinois State University; *The Betrayal* at Heartland Theatre Company in Normal; *Cyrano De Bergerac* and *A Piece Of My Heart* at Eureka College; *Cole*, at Northern Kentucky University's Summer Theatre, and *Alice In Wonderland* for the American Family Theatre, a touring company from Philadelphia, Pennsylvania. Ms. Brennan has also done freelance work in the Philadelphia area and in Illinois at the Illinois Shakespeare Festival and McLeod Summer Playhouse. Her work can also be seen at Historic St. Patrick's Church in Bloomington, where she was a part of the decorative painting to restore this landmark.

Kevin Francis Finn

Music Director/Hello Dolly, NINE, Seussical

This season marks Kevin Finn's debut at The Little Theatre On The Square, following a five year run as the resident Musical Director for the Department of Theater and Dance at Millikin University. Prior to Millikin he served as the Associate Music Director for the National Tour of *CATS*; Music Director/Conductor for the International Tour of *Joseph and the Amazing Technicolor Dreamcoat* starring Donny Osmond; Associate Music Director for the Off-Broadway revival of *Chess*; and the voice of Tinkerbell in the Broadway production of *Peter Pan* starring Cathy Rigby. During the summer of 2002, Kevin musically directed and conducted the record-breaking engagement of *Joseph and the Amazing Technicolor Dreamcoat* at the St. Louis MUNY and at Kansas City Starlight. In 1994, Kevin produced a workshop of a new musical, *A Small Circle of Friends* at the Briarstreet Theatre in Chicago and an all-girl musical entitled *Girls Night Out*. Following this season at TLTOTS, Kevin will return to New York City and a professional career in Musical Theatre.

Ed Flesch

Director/The Boy Friend

Since 1978 Ed has been the Artistic Director of the Fireside Theatre in Wisconsin where he has produced and directed over 110 productions of Broadway musicals, plays, and original musical revues. In addition, he has directed throughout the US in such theatres as Country Dinner Playhouse (Denver), La Comedia Theatre (Dayton), The Red Barn Playhouse (Rockford), and The Chateau Theatre (Chicago). As an actor he is best known for such roles as Tevye in *Fiddler On The Roof*, Cervantes/Quixote in *Man Of La Mancha*, and Emile DeBecque in *South Pacific*. He is an accomplished playwright and conceived, produced and directed Madison, Wisconsin's first ever performing arts benefit for AIDS.

WEST & COMPANY, LLC

Certified Public Accountants and Consultants

- Greenville 618-664-4848
- Effingham 217-347-5181

- Mattoon 217-235-4747
- Sullivan 217-728-4307



MID-STATE TANK CO., INC.

P.O. Box 317 • Sullivan, IL 61951
PH: 217/728-8383 • FAX: 217/728-8384 • TOLL FREE: 800/722-8384



"A Premiere Senior Lifestyle Community"

One Masonic Way, Sullivan, IL 61951 (217)-728-4354/Fax (217)-728-4221

A Continuing Care Retirement Community

Offering:

*Independent Apartments/Duplexes *Traditional Sheltered/Nursing Care

*Medicare/Medicaid Certification
Summer/2004



Sullivan
FAMILY CARE CENTER

FIELDS WRIGHT MEDICAL FACILITY
2 West Adams St. • Sullivan, Illinois 61951
(217) 728-7353

Affiliated with St. Mary's Hospital, Decatur, Illinois 62521

The Arts



Medicine

Glen Dust, M.D.
Dennis Costerisan, D.O.
Faisal Bukhari, M.D.
Kim Miller, A.P.N./C.N.P.
Joya Stewart, A.P.N./C.N.P.
Esther Johnson, A.P.N./C.N.P.

together...

We Make Our Community Better.

WHERE'S CHARLEY?

Based on Brandon Thomas' *CHARLEY'S AUNT*

Book by GEORGE ABBOTT
Music and Lyrics by FRANK LOESSER

Scenic Design by
Noel Rennerfeldt

Lighting Design by
John Brian McCarthy

Costume Design by
Lauren Lowell

Production Stage Manager
Tom Reynolds*

Music Direction by
Jason Yarcho

Directed & Choreographed by
J. Thomas Kidd

The Cast

(In order of appearance)

Brassett.....	Edward Schneckner
Jack Chesney	Ryan Strand
Charley Wykeham.....	Barry Anderson
Kitty Verdun.....	Sierra Boggess*
Amy Spettigue.....	Angela Smith
Wilkinson.....	Anthony Majewski
Sir Francis Chesney.....	Michael Haws*
Mr. Spettigue.....	Patrick McCarthy*
Donna Lucia D'Alvadorez.....	Ann Morrow
Reggie.....	Bryan Lefeber
Boys and Girls Ensemble.....	Tyler Albright, Alex Jorth, Brian Lefeber, Anthony Majewski, Tori Hicks, Cheryl Ann Sanders, Natalie Wisdom, Cortney Wolfson

**Members of Actors' Equity Association, the union of Professional Actors and Stage Managers in the United States.*

Acknowledgements

The News Progress, Millikin University, Illinois State University, Emilee Best, Dunscomb Furniture, Renee Mariotti, The Zoo Theatre Co., Terence Mayhue, Sullivan High School, Pauline Rowles and Mary Ann Hargis, 89.9 THE MAX

The Little Theatre On The Square

Trusts the Drycleaning Excellence of

HAROLD'S CLEANERS

1109 Broadway Avenue
Mattoon, IL 61938
234-6100

WHERE'S CHARLEY is presented through special arrangement with and all authorized performance materials are supplied by Music Theatre International, 421 West 54th Street, New York, NY 10019 Tel: (212) 541-4684 Fax: (212) 397-4684 www.MTIShows.com

WHERE'S CHARLEY?

*Setting: Oxford University, England
June, 1892*

Musical Numbers

ACT ONE

<i>The Years Before Us</i>	Ensemble Men
<i>Better Get Out Of Here</i>	Amy, Kitty, Jack, Charley
<i>New Ashmolean</i>	Jack, Kitty, Amy, Ensemble
<i>My Darling, My Darling</i>	Jack, Kitty
<i>Make A Miracle</i>	Charley, Amy
<i>Serenade With Asides</i>	Spettigue
<i>Lovelier Than Ever</i>	Sir Francis, Donna Lucia, Ensemble
<i>The Woman In His Room</i>	Amy
<i>Pernambuco</i>	Charley, Jack, Full Company

15 Minute Intermission

ACT TWO

<i>Where's Charley</i>	Ensemble
<i>Once In Love With Amy</i>	Charley
<i>Red Rose Cotillion</i>	Jack, Kitty, Ensemble
<i>My Darling, My Darling</i>	Charley, Full Company

Orchestra

<i>Conductor/Keyboards</i>	Jason Yarcho
<i>Assistant Conductor/Keyboards</i>	Kevin Francis Finn
<i>Percussion</i>	Rob Reder
<i>Acoustic Bass</i>	Jon Burkhardt

Production Staff

<i>Production Stage Manager</i>	Tom Reynolds	<i>Sound Engineer</i>	Dan Jones
<i>Assistant Stage Managers</i>	Kim Gifford, Stacy Walker	<i>Costume Shop Foreman</i>	Lauren Lowell
<i>Technical Director</i>	Adam Liston	<i>Assistant to the Costume Designer</i>	Camilla Haith
<i>Master Scenic Carpenter</i>	Carl L. Sage	<i>Stitchers</i>	Jeffrey Farber, Robert Goode, Camilla Haith, Lyn Leithliter
<i>Scenic Carpenters</i>	Frank Austin, Robert Cole, Ben Edwards	<i>Wardrobe Mistress</i>	Kathryn Harris
<i>Props Master/Scenic Painter</i>	Sarah Palmer	<i>Dance Captains</i>	Anthony Majewski, Tori Hicks
<i>Master Electrician</i>	John Tibbetts	<i>Spotlight Operators</i>	Amber Cole, Hannah Cole

Artistic Company Profiles

Michael Flaws

Associate Artistic Director • Equity Actor

Please refer to biography in Performance Company Profiles.

Marie Jagger-Taylor

Director/Seussical • Choreographer/NINE • Equity Actor

Please refer to biography in Performance Company Profiles.

J. Thomas Kidd

Director & Choreographer/Where's Charley?

J. Thomas Kidd received an MFA in Directing from Southern Illinois University Carbondale. He has directed and choreographed for several professional companies and industrial venues including The Six Flags Corporation, The McLeod Summer Playhouse, Manoa Valley Theatre, The World Congress Center and The Atlanta Braves. Among his past productions are *Chicago*, *Joseph and the Amazing Technicolor Dreamcoat*, *Seven Brides for Seven Brothers*, *A Few Good Men*, *The Secret Garden*, *the Tempest*, *Lost in Yonkers* and many others. In 1999 he received a special award for Outstanding Artist from the Hawaii State Theatre Council for his direction of the Honolulu premier of *Angels In America, Part II: Perestroika*. Most recently Kidd served as the Chair and Artistic Director for the Department of Theatre for Shorter College in Rome, Georgia, and in 2003 was recognized by The Kennedy Center American College Theatre Festival for Outstanding Achievement in Direction for that theatre's production of *Jekyll and Hyde, The Musical*.

Lauren Lowell

Costume Designer/NINE, Where's Charley? and Suessical

Lauren Lowell is a member of the Costume Design Faculty at Illinois State University. Recent design credits include: *As You Like It* (Illinois Shakespeare Festival); *Glass Menagerie* (Apollo Professional Theatre of Peoria); *Shame the Devil! An Audience with Fanny Kemble* (Fanny Kemble Tours); *Before the Fire* University of Georgia, Shorter College, and the New York Fringe Festival); *The Crucible*, *Amadeus* and *The Caucasian Chalk Circle* (Illinois State University); *Measure for Measure* and *The Living Newspaper: 1935* (University of Georgia). This year, Lauren spent her birthday creating the ghost of Angeline Milner for a segment of *Weird Travels* (broadcast on the Travel Channel) to be aired in October. She joins The Little Theatre On The Square after a lovely trip to England where she engaged in a research symposium with the British Costume Society. Her next project, *Bald Grace*, will open with the Stockyards Theatre Project in Chicago. Lauren is an active member of the United States Institute of Theatre Technology. Lauren received the W. Joseph Stell Design Expo Award in 2001, and the USITT-SE Design Award in 2000. Lauren thanks her wonderful husband and her family for their support.

John Brian McCarthy

Lighting Designer/Hello, Dolly!, The Boy Friend, Where's Charley?, Seussical

John Brian McCarthy is currently pursuing a BFA in Theatrical Design and Arts Administration from Viterbo University in La Crosse, Wisconsin. Prior to coming to The Little Theatre On The Square, he has designed lighting for *No, No Nanette* at Viterbo and the country music revue *Rockin' Roadhouse* at Valleyfair amusement park, as well as several other shows. John Brian has also designed sound for *Noises Off* and William Shakespeare's *Twelfth Night*, and stage managed *The Nutcracker* and *The Good Woman of Szechwan*. In addition to going to school full time, John Brian runs a design and production company, McCarthy Design Unlimited. John Brian plans to continue designing lighting for music, dance, and music theatre, and hopes to eventually work on Broadway.

Reach For The Stars!

BE A STAR

In The Little Theatre On The Square's

This program is supported by
Consolidated Communications

This program is supported by
a grant from the
Illinois Arts Council



Students from the Dance Program perform in the annual Dance Recital in May and students from the Drama Program will perform a Broadway Jr. musical for area schools and the general public in the spring.

Dance Instruction

For 18 month to Adult including the classes:

Mommy and Me (18 months - 3 years)
Intro to Dance for 3 to 5 years
Kindergarten Tap

Beginning to Advanced classes in:

Ballet/Point
Tap
Boyz Tap
Jazz
Hip-Hop
Lyrical Jazz
Musical Theatre Dance for High School
Adult and Senior Tap

Drama Classes

For aged 5 to Adult including:

Creative Drama
Tools for the Stage
Improvisation/Scene Study
Tools for On-Camera
How to be a Working Actor
Production Performance



Touring Productions and Workshops

Professional actors will come to your school with costumes, sets, props and personalities and dazzle students and teachers. Currently available to area schools for bookings during the school year are productions of *Accidental Friends* which explores issues of diversity, respect, tolerance and acceptance, and *The Garden of Rikki Tikki Tavi* which is a comedy about sharing, cooperation and respect.

***For more information, please contact Marie Jagger-Taylor, Director of Education at:
The Little Theatre On The Square at 217-728-2065.***

Registration for Dance/Drama classes will be August 27 and 28, 2004.
Classes begin September 13, 2004.

Artistic Company Profiles

Noel Rennerfeldt

Scenic Designer/ *Where's Charley?*, *Seussical*

Noel Rennerfeldt has now officially lost track of how many years he has been designing for TLTOTS. Last summer he designed the entire season for The Little Theatre and after spending nine months in a sanitarium recuperating from the experience, Noel will be back at it designing *Where's Charley?* and *Seussical*. Actually, he spent that last nine months doing what he normally does which is designing for Rockford College in Rockford, Illinois, where he also serves as chair of the Performing Arts Department. In his "spare" time Noel tries to keep track of his wife and five kids who at any given time are as far west as Colorado and as far east as Moscow.

Tom Reynolds

Production Stage Manager

Tom Reynold's credits include Off-Broadway: *Hank Williams: Lost Highway* (Manhattan Ensemble/NJNG), *Golf The Musical* (Eric Krebs Theatricals), *Right You Are* (National Actor's Theatre), *Faster, Finner's Fee* (Rattlestick Productions), *Abie's Island Rose* (Jewish Repertory), Regional: *A Tuna Christmas*, *How I Learned to Drive*, *Jitney*, *Barefoot in the Park* (Studio Arena), The National Tour of *Anything Goes* (Circa 21) and 4 seasons at TLTOTS.

Tom Tutino

Scenic Designer/ *The Boy Friend*, *NINE*

Tom Tutino is delighted to return to The Little Theatre to design *The Boy Friend* and *NINE*. Previous Little Theatre credits: *Oliver*, *The Lion In Winter*, *Mame*, *Bye Bye Birdie*, and *Into The Woods*. Recent productions: *Noises Off* (Metropolis Performing Arts Centre, Chicago); *Jemima Boone*, *The Diary Of Anne Frank*, *Ben Franklin's Apprentice*-world premiere, *Bridge To Terabithia*, *Frankenstein*, (Stage One, Louisville, Kentucky); *Scrooge*, *HONK!*, *1776*, *The Odd Couple*, *Camelot*-directed by Seth Reines, *Lend Me A Tenor* (Comberland County Playhouse, Crossville, Tennessee); Other credits: Seaside Music Theater, Kentucky Repertory Theatre, Public Theatre of Kentucky, Mac-Haydn Theatre. Tom lives in Bowling Green, Kentucky with his family where he is a Professor in the Department of Theatre & Dance at Western Kentucky University. He holds an MFA from Boston University and is a member of United Scenic Artists.

Kathryn Wagner

Costume Designer/ *Hello, Dolly!*, *The Boy Friend*

Kathryn Wagner is thrilled to return to The Little Theatre On The Square having designed *Oklahoma!*, *The Pirates of Penzance*, and *Grease* last season. Currently an Assistant Professor and Resident Costume Designer at the Department of Theater at Southern Illinois University Carbondale, her other recent designs include *The Glass Menagerie* for Summerfest *A Man For All Seasons* for Peninsula Players and *The Lady From the Sea* for SIUC. Prior to coming to the Midwest, her work was seen in many New York area theatres including McCarter Theatre, Lamb's Theatre Company, and the New Jersey Shakespeare Festival. Ms. Wagner holds a BFA from the Goodman School of Drama, and MFA from Rutgers University, and is a member of United Scenic Artists, Local 829.

Office Telephone
(217)347-7218

William J. Rezabeck, DPM, Ltd.

Surgery • Diseases • Injuries

of the Foot and Ankle

Member American College of
Foot and Ankle Surgeons

203 N. Fourth St.
Effingham, IL 62401



*Kurt & Mara
Van Deursen*

**ACE
Hardware**

R RadioShack®
You've got questions. We've got answers.®

•Sporting Goods • Camping • Gifts

7 a.m. - 7 p.m. Mon. - Fri. • 8 a.m. - 6 p.m. Sat. • 12 - 4 Sun.

Johnstown Mall
Shelbyville, Illinois 62565
(217) 774-2723

Lakelander Plaza
Sullivan, Illinois 61951
(217) 728-4100



Ruben Boyajian, M.D., F.A.C.S.
Kevin Malone, M.D., F.A.C.S.

*General, Thoracic & Vascular Surgery
Gastrointestinal Endoscopy • Laser Endoscopic Surgery
Surgical Oncology • Breast Care Center*

EFFINGHAM SURGICAL ASSOCIATES, S.C.

900 W. Temple • Suite 101
Effingham, IL

Phone: 217-347-2500

**Jerry's
IGA**

HOMETOWN PROUD.

**431 S. Hamilton • Sullivan
Open 24 Hours • 7 days a week**

- FRESH BAKERY
- DELI
- PRODUCE
- MEAT

H

**Hagen's
Family Pharmacy**



*is proud to support
this year's performances at*

*The Little Theatre
On The Square*



BUSINESS PHONE:

217-728-7388

HOME PHONE:

217-728-8069

8 EAST HARRISON ST.

SULLIVAN, IL 61951

Bob
Hagen,
R.PH.

Cathy
Hagen,
R.PH.

We may offer the
relief you are
looking for!



Call today!
Present this ad for a
FREE consultation.

Engineering your return to healthy living

Central Illinois Physical Therapy

417 S. Hamilton 100 Professional Plaza

Sullivan

728-8100

Mattoon

235-1245/345-1245



Artistic Company Profiles

Chrissy Wright

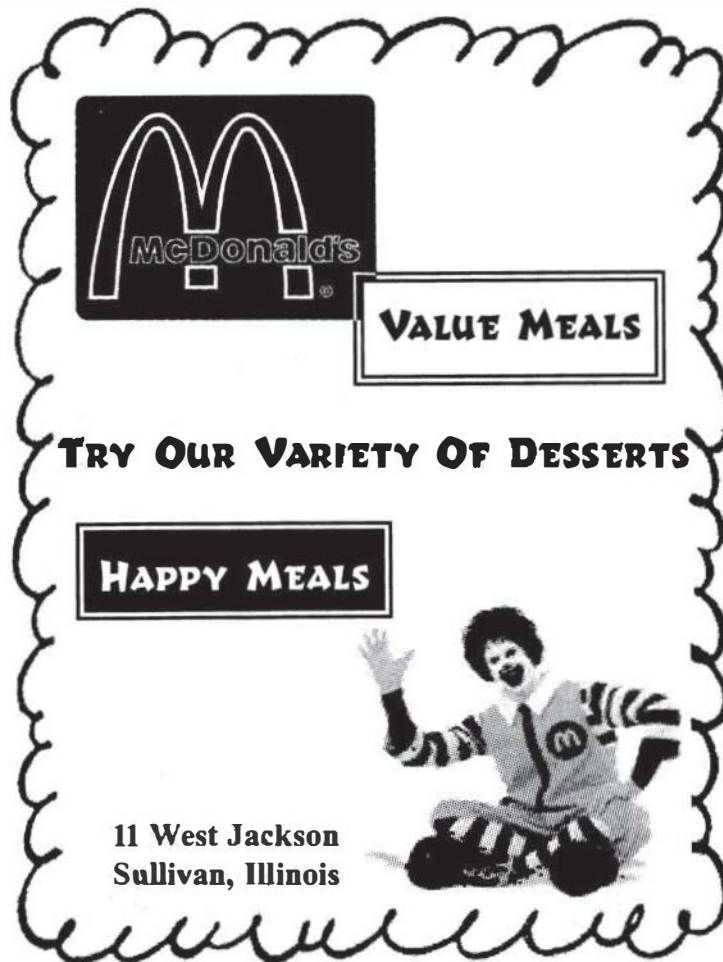
Choreographer/*Hello, Dolly!*, *The Boy Friend* • Equity Actor

Please refer to biography in Performance Company Profiles.

Jason Yarcho

Music Director/*The Boy Friend*, *Where's Charley?*

Jason Yarcho, a native of Lincoln, Illinois, is a senior Piano Performance Major at Eastern Illinois University. Studying with Dr. W. David Hobbs, Jason has played/musical directed several shows across central Illinois and is thrilled to be a part of The Little Theatre. The past two years, Jason has won EIU's Concerto Competition playing Gershwin's Piano Concerto in F and Tchaikowsky's Piano Concerto #1 in Bb minor with the Eastern Symphony Orchestra. This past year Jason was voted Outstanding Performer by the EIU Music Faculty. After graduating, Jason plans on pursuing a career in musical theatre.



**Proudly Supports the Theatre for
Young Audience Productions.**

O'Malley's



Non Smoking Dining Room Available

-  STEAKS
-  MEXICAN
-  SANDWICHES
-  ENTERTAINMENT

BREW & STEW

217-728-9202

Hours: Monday - Saturday 11:00 a.m. - 1:00 a.m.

City of Sullivan

*After all the hard work,
rehearsals, wardrobe and
make-up for this exciting
theatre season...when the
curtain goes up ----
Break a Leg!*



ALAMO

STEAK HOUSE & SALOON

Mattoon's First Choice For

Steak • BBQ Ribs • Pork Chops • Fajitas

DINNER SPECIAL NITELY

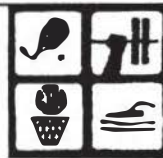
DAILY SPECIALS IN THE LOUNGE

Free Food Bar - Mon. - Fri. 4 pm - 7 pm

Thursday Night Is Always Margarita Night!

Broadway E. - Mattoon - 234-7337 - Open 4 pm Daily

Monday Night is All U Can Eat Rib Night!



SULLIVAN CIVIC CENTER

P.O. Box 145

600 N. Washington, Sullivan, IL 61951

Fax • 217-728-8717

Phone • 217-728-4541

**Complete Swimming, Fitness &
Recreational Facilities**

Production Company Profiles

Harrison Frank Austin

Spotlight Operator

Harrison Frank Austin has enjoyed being involved with The Little Theatre since 1999. Some of the productions you may have seen him perform in are, *The Music Man*, *Oliver*, *The Music Man, Jr!*, and *The Pirates of Penzance*. Frank is a Sullivan native that likes to spend most of his spare time playing guitar.

Amber Cole

Spotlight Operator

Amber Cole is a 16 year old junior-to-be at Sullivan High School. She is glad to be back for her 3rd season running spot at The Little Theatre. Amber is involved in drama (taught by Marie Jagger-Taylor) and dance (taught by Marie Jagger-Taylor and Michelle Collingwood) through programs at The Little Theatre. She has performed in *Mirror Images* and *Shakespeare Showcase* under the direction of Ms. Rebecca Lawson. This year in drama she appeared alongside her fellow drama classmates in *The Stinky Cheese Man and Other Fairly Stupid Tales* as a narrator, a wicked stepsister, and a cow. When Amber is not dancing, or running her "giant flashlight" at TLTOTS she can usually be found playing her bari sax or riding her horse. Amber would like to thank her family and friends, especially her mom for always being there and running her back and forth to all her random activities. Amber gives a huge shout out to her little ushering buddies and wants to tell everyone to enjoy life 'cause you can only live it once, unfortunately.

Robert Cole

Scenic Carpenter

Bob Cole is glad to be joining the Little Theatre gang for his fourth season. Bob has worked as a spot light operator, a carpenter, and he has helped with some lighting and sound. This year Bob is working in the shop as a scenic carpenter. He participates in drama and dance and will start classes at Parkland this fall. Bob was a part of The Little Theatre's S.T.A.R. Outreach Program, which traveled to various schools this spring. Bob would like to thank his family and friends for helping him get to where he is today. He never could have done it without his sister, Amber, who is also part of the Little Theatre gang. Enjoy The Show...and the New Building.

Ben Edwards

Scenic Carpenter

Ben Edwards is glad to be back at TLTOTS as a scenic carpenter. Recent credits include the lighting designer for TLTOTS's dance concerts *Let's Dance* and *That's Entertainment*. Other lighting designs at TLTOTS include *Footloose* (Sullivan High School), *Music Man, Jr!*, *The Shakespeare Showcase*, and *Uncool*. Assistant designer credits include *Jekyll & Hyde* (LTOTS), *Carousel* (Mesa Community College, Arizona), *The Sound of Music* (Gilbert Fine Art, Arizona), and the west coast premier of Theatre Mitu's *The Ramayana* (ACT, San Franco). Currently Ben is an apprentice for Theatre Mitu. for lighting and scenic design. In the fall of 2004, Ben will be attending Illinois State University, where he will be attending the School of Theatre for Design and Production.



Restaurant

"On The Square"
9 S. Main
Sullivan, IL 61951
(217) 728-2717

Espresso/Cappuccino/Latte
Specialty Coffees
Specialty Teas & Tea Latte
Raspberry Iced Tea

Our Party Room is Now Open

Large Groups • Parties
Meetings • Special Events

Reservations Accepted

Great Entrees

Appetizers Including...

- Fried Potato Chips
- Fried Sweet Potato Chips
- Fried Pickles
- Sisters Buffalo Wings
- Veggie Quesadillas
- Chicken Quesadillas

Desserts Including...

- Amaretto Bread Pudding
- Crème Brulee
- Chocolate Seduction
- Tiramisu
- Cheesecake - regular or sugar free
- Sisters Dessert Trio
- Friazo

OPEN 7 DAYS A WEEK

*Lunch 11 a.m. - 2 p.m. * Dinner 5 p.m. - 8 p.m.*

Weddings
Anniversaries
Parties

Moments to Remember
Disc Jockey Service

Thousands of
CD selections from the
40s, 50s, 60s, 70s,
80s, 90s & today!
"Great Music at Reasonable Prices"

Mike Grose, DJ
(217) 728-4697
Email: mlgrose@tix.net



Mon. - Fri.	5:00 am - 1:30 pm
Saturday	5:00 am - 11:00 am
Sunday	5:00 am - 1:30 pm

We can accommodate groups and provide catering for private parties, either in our restaurant or at any other location.

Phone: 217-728-9595
Reservations Accepted

*Located next to
The Little Theatre On The Square*

Production Company Profiles

Kim Gifford

Assistant Stage Manager

Kim Gifford is a native of St. Louis. She has been involved with City Theatre (formerly City Players of St. Louis) for the last 4 years and currently holds the position of resident stage manager. Her last production with them was *Stonewall Jackson's House*. She most recently worked at the St. Louis Black Repertory Company as wardrobe mistress for *Home the Musical* and *Pretty Fire*. Other St. Louis credits include St. Louis Shakespeare Company, Actor Renaissance Theatre and the Muny 1st Stage. Dallas credits include Kitchen Dog Theater, The Undernain Theatre, Our Endeavors, and Junior Players. Kim is pleased to be making her debut with The Little Theatre On The Square this season as ASM.

Lauren Gire

Wardrobe Mistress

Lauren Gire is very pleased to be joining The Little Theatre On The Square. She is a returning Junior at Millikin University working towards a degree in Theatre and minors in both dance and psychology. She looks forward to a busy summer and maybe even a trip back home to Hoffman Estates, Illinois.

Daniel Jones

Sound Engineer

Daniel Jones hails from Cadillac, Michigan. He is currently studying radio/tv broadcasting at Lake Land College in Mattoon, with a speciality in audio design. He will transfer to Eastern Illinois University next year to continue audio. This is Daniel's second Summer Season at The Little Theatre. Thanks to Rachel for her love and support and to Brooklyn, just for being there.

Adam Liston

Technical Director

Adam Liston grew up in the deserts of Palm Spring, went to school amid the giant redwoods, commuted the traffic horrors of Los Angeles, and somehow ended up in the corn fields of Illinois. A graduate of Humboldt State University, Adam has been a professional theatre playwright, director and designer for the past 8 years with numerous theaters around California. For the past 4 years he ran a theater program for at-risk youth and developed a very healthy Peter Pan syndrome which may help explain why he has run off to play in the theater for the rest of his life.

Sarah Palmer

Props Master

Okay, now everyone notice the lovely props that all those fabulous actors are holding. Are you noticing? Good. This is Sarah Palmer's second summer as Props Master at The Little Theatre. She's originally from Salt Lake City, Utah and is usually found being a Set Design Major at Rockford College in Rockford, Illinois. She spent last semester studying theatre abroad in London, England and is excited to return to the U.S. of A. and all the folks at TLTOTS. She would like to thank her family, friends, and teachers for being so supportive of her and her crazy schemes. "Be mysterious. Be in love. And you will be happy."

Sullivan Country Club

(217) 728-7232



Lovely Country View • Delicious Food • Ruthie's Famous Pies

Theatre Patrons & Motorcoach Groups

Receive a Complimentary Glass of House Wine with Dinner

Reservations Preferred

Sunday Brunch Buffet 11 AM - 1 PM

Tuesday through Sunday Lunch 11 AM - 1:30 PM

Tuesday through Saturday Dinner 5 - 9 PM

- Illinois Based
- Truckload Carrier
- General Freight

MARVIN KELLER

mk

TRUCKING INC.

*Supporting the Arts
in Our Community*

217-728-9800

112 N. Main St.

Sullivan, Illinois 61951

www.kellerlogistics.com

Wonder Women Cleaners

Celebrating 28 Years of Service

Specialists In

RESIDENTIAL, BUSINESS & REAL ESTATE CLEANING

"Cleaning with a woman's touch"

VI EGGERS

(217) 428-9630

Decatur, IL 62521

The Briarwood

Primitives ★ Country ★ Colonial ★ Cottage



*Receive 10% off
the regular price
with ticket stub.*

Relax to soothing music and
enjoy shopping our many charming
settings and ever changing displays of
home accents, florals, pine painted
furniture, linens, candles and
decorative accessories.

917 W. Harrison • 217-728-2725 • Mon.-Sat. 10-5

West end of Sullivan • Same street as The Little Theatre

Production Company Profiles

Jennifer Peterson

Costume Shop Manager/Cinderella Costume Designer

Jennifer Peterson is currently a second year graduate student in Costume Design at Southern Illinois University, Carbondale. Before coming to SIU-C, she managed the costume shop at Louisiana State University. She thanks her husband Ben for his love and support.

Carl L. Sage

Scenic Master Carpenter

Carl Sage is a self-described "theatrical generalist" currently based in Kissimmee, Florida. Most recently he spent the 2003-2004 season as a scenic carpenter with the Virginia Stage Company in Norfolk, Virginia. His prior theatrical adventures include freelance work in lighting design at the Armory Free Theatre in Urbana, Illinois and with Greasepaint Youtheatre in Scottsdale, Arizona. His full time experiences include work as an audio-visual technician with Swank Audio Visuals in Phoenix, Arizona and as a theatrical technician at the Walt Disney World Resort in Lake Buena Vista, Florida. He is currently looking forward to returning to school to complete his long delayed B.A. in theatre.

John Tibbetts

Master Electrician/Children's Lighting Designer

John Tibbetts is returning to The Little Theatre On The Square for his second summer as Master Electrician. John just finished his junior year at the University of Connecticut where he is majoring in Technical Theater. His productions at Uconn for this year include: Lighting Designer for *Totems*, Sound Designer for *Christmas Carol*, and Master Electrician/Audio Master for *A Midsummer Nights Dream*. In addition to being Master Electrician at TLTOTS, John is also the Lighting Designer for the children's series.

Stacy Walker

Assistant Stage Manager/Children's Stage Manager

Stacy Walker begins her second summer at TLTOTS. Stacy has a BFA in Theatre from Emporia State University in Emporia, Kansas. During the school year, Stacy works at TLTOTS as Assistant to Education Director, Marie Jagger-Taylor, wearing many hats in association with the new S.T.A.R. program. There she feels very fortunate to be able to work with the ever patient, lovely and talented Marie Jagger-Taylor. Before coming to TLTOTS, Stacy was the Artistic Director of KidsMatter National Theatre, Inc. and worked also for the Utah Musical Theatre. In addition to her professional theatre work Stacy is active in several local theatres including The Station Theatre, Parkland College Theatre, and CUTC in Champaign, Illinois. Thanks of course again go to all her friends and family for their unwavering support and sense of stability they lend to her life.

9 W. Harrison • Sullivan
1 block west of The Little Theatre

Telephone: 217-728-2866


Grapevine Boutique

♦ Women's Quality Consignment
& New Brand-Name Overstocks.
♦ Jewelry ♦ Candy ♦ Home Decor

Summer Hours (June - August)
T & Th ~ 10:30 to 5:30 • W & F ~ 10:30 to 7:30
Sat. ~ 10:30 to 3:00

Regular Hours
T through F ~ 10:30 to 5:30
Sat. ~ 10:30 to 2:00

Charleston • Effingham • Sullivan • Arthur • Marshall • Paris



~ FOOT SPECIALISTS ~

"Come and make your feet feel better!"

Dr. Joseph S. Borreggine, D.P.M.
Dr. Michael Muscatella, D.P.M.
Diplomats American Board Podiatric Surgery

1-800-366-8397

Hours by Appointment
Body One Spa
417 E. Hamilton • Sullivan, IL 61951

We Want To Be Your Foot Care Experts!!

McMullin - Young is proud to play a part
in supporting the arts in our community.

McMullin - Young

503 West Jackson Street
Sullivan, IL 61951
217-728-4309

Funeral Homes, Ltd.
Our Family Serving Your Family Since 1856

Licensed Funeral Directors
Don Young
Mack Young

Three convenient locations:
Bethany
Lovington
Sullivan



Moultrie County Beacon Inc.

Lighting the way for people with disabilities

- * Developmental Training
- * Medical Services Unit
- * Early Intervention
- * Workshop
- * Residential (CILA) Services
- * Case Management

WORKSHOP SPECIALIZING IN: WOOD STAKE PRODUCTION,
SMALL ASSEMBLY, PACKAGING AND QUALITY CONTROL

*This agency is a private, non-profit
CARF Accredited Rehabilitation Facility*

401 West Water
P.O. Box 406
Sullivan, IL 61951
217/728-7396

www.mcbeacon.org



SHOWTIME

*Buffet, Restaurant
& Catering*

Seating for 250 • Plenty of Parking

A Hollywood themed dining experience.
Homestyle Buffet & a Full Menu
with great Steaks and more!

2100 Broadway • Mattoon, IL 61938
217-234-4151
www.showtimebuffet.com

WOOD & MAYBERRY

Attorneys at Law

Steven K. Wood
Steven W. Mayberry

200 West Harrison
Sullivan, Illinois 61951
Telephone: 217-728-7369
Fax: 217-728-4781

TAKE A SEAT AT THE DEPOT

102 N. Washington • Bethany, IL 61914 • 217-665-2211

Abby & Ally's Ice Cream Shop
Maddie's Coffee Shop
Gift Shop

Deli Sandwiches
Delicious Desserts

Hours
Thurs. & Fri. 10 AM to 8 PM
Saturday 10 AM to 5 PM
Sunday 2 PM - 6 PM

Stop by for a sandwich & dessert before the show.

Gift Certificates Available



Featured in
Midwest Living
Magazine

The Flower Patch

Bed & Breakfast

A Victorian Home with
Public Gardens, Gift Shop &
Artist-in-Residence.

Bill & Lynne Harshbarger, Hosts

225 East Jefferson
Arcola, Illinois 61910
217-268-4876
www.illinoisads.com
Only 20 minutes
from Sullivan

Administrative Staff Profiles

Tara Bates

Ticket Office Clerk

Tara Bates has been participating at The Little Theatre On The Square for over eight years. She has performed various jobs over the years and is excited about the time she will spend with us this summer. When Tara is not at work, she spends her time chasing after her one-year old son, Noah. She wants to welcome everyone and hopes everyone enjoys the show this season.

Erin Denney

Ticket Office Clerk

Erin Denney is a recent graduate of Humboldt State University in Northern California with a degree in History. Although this is her first time working full time in a theatre, she has spent many years around theatres in various capacities. Next year she plans to continue her education by pursuing a Masters in Business degree. After surviving a hectic semester and the long journey from California, Erin is enjoying the slower paced lifestyle that Sullivan offers.

Arlene Denning

Ticket Office Manager

This is Arlene Denning's 16th year with The Little Theatre. Arlene began working for the theatre in 1989 when the shop, theatre and company housing were all one half to one mile from each other. When she started, the box office was a "closet" and the modern technology of computers had been added in the lobby with fabric hung from shower curtain rods to block the cables from the public. We've come a long way!. Arlene is elated to have most everything within a couple blocks of each other and such a wonderful facility to work in. A special THANK YOU to all who donated to make the dream of a new theatre a reality.

Mary Dilliner

Marketing Director

As marketing director Mary Dilliner feels her job is to make the "stars" sparkle and to be an instrument in each musical production. Mary would like to thank the Board of Trustees and Marketing Committee for enabling her to do her job more effectively. She gives a standing ovation to everyone that contributed to the building project and applauds all our advertisers for supporting the arts in central Illinois. Mary wants to especially acknowledge and say a special THANK YOU to Chris and Jeri Eckel and Tom Bunfill at Illinois Printing Services and her "very best friends," the media.

Laura Elder

Ticket Office Clerk

Laura Elder is always glad to switch from planning lessons and grading papers for fourth graders at Sullivan Elementary to taking reservations and helping patrons at The Little Theatre. Another great part of the job is working with Miss Becky and the other staff. When not working, Laura enjoys reading, antiques, and shopping.

Lori Harbaugh

Business Manager

Lori Harbaugh celebrates her 22nd season with The Little Theatre On The Square in her beautiful new office (with a window!). She wishes to send a big thank you to all of the many generous donors who have made these renovations possible. A Sullivan native, she is honored to be part of an institution as world renowned as The Little Theatre. Lori is on the road every Monday evening performing with "The Prairie Winds", a local group that entertains at area nursing and retirement homes. When she's able to get away, she enjoys fishing, travelling and snorkeling.



Blues Greens &

Where the **ART WORLD** meets the **GOLF GREENS**

Thursday, September 9, 2004
Hickory Point Golf Course

Enjoy golf, dinner, and a night of country blues

**Headlined by Nashville Star standout and
former Decatur Park Singer Jamie Garner**

Also featuring Shonna Bonds, country music
sensation and former Decatur Park Singer

Tickets: Decatur Area Arts Council, 423-3189
Decatur Park District, 422-5911

Sign up today, and support Decatur arts!



Administrative Staff Profiles

Donna Newcome

Administrative and Box Office Assistant

Joining us for her very first season at The Little Theatre On The Square is Donna Newcome. She is very excited to become a part of our staff. Donna and her husband Bob reside in Bethany with their daughters, Haley, who graduated in May from Sullivan High School and Ashley, who is at school in DeKalb at NIU working on her masters degree. She is looking forward to a very exciting season-hopefully the first of many!

Jamie Palmer

Ticket Office Clerk

Jamie Palmer is excited to return for her forth summer at The Little Theatre On The Square. She just graduated from Eureka College with a BS in Biology, and is looking forward to a relaxing summer at home. After the summer, Jamie plans to start service with AmeriCorps; this fall she is moving to Sacramento, California to start a new adventure!

Jill Seelhoefser

Ticket Office Clerk

Jill Seelhoefser returns to the box office staff for her sixth year. She is currently attending Eastern Illinois University where she is majoring in Biology. She has always been active in music and theatre, and has enjoyed singing in various choirs over the years. Jill looks forward to another great season here at The Little Theatre, and hopes that you enjoy the show!

Lara Seelhoefser

House Manager

Lara Seelhoefser returns to TLTOTS as the House Manager for the second year. She has been with the theatre since 5th grade as both an usher and a performer in *Joseph and the Amazing Technicolor Dreamcoat*. As a junior at Sullivan High School, she is very involved in the Sullivan Singers Show Choir, basketball, Student Council, along with a Leadership group. She enjoys hanging out with her friends, playing the piano, traveling with her family and spending quality time with her sister at work. This summer she is excited about the new theatre and hopes that everyone will enjoy the experience of Broadway in Sullivan.

Becky Zimmerman

Ticket Office Manager

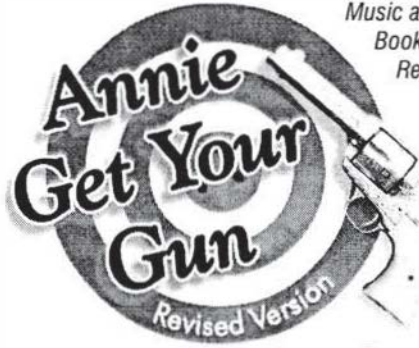
Thank you, Thank you, Thank you to one and all for the new digs!

Decatur's
Community
Theatre



SEASON
41

www.decaturnet.org/theatre7



Music and Lyrics by Irving Berlin
Book by Herbert & Dorothy Fields
Revised by Peter Stone

Reshaped in 1999 into a Wild West show-within-a-show, this musical frames the ageless love story of sharpshooters Annie Oakley and Frank Butler.

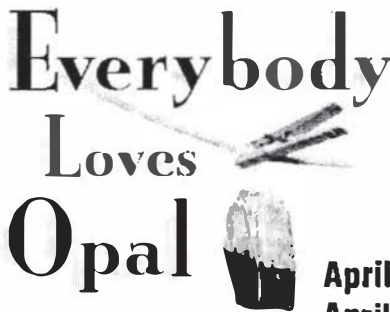
November 5-6 & 12-13, 2004 - 7:30 p.m.
November 7 & 14, 2004 - 2:00 p.m.



Written by Alan Ayckbourn

This comedy brings a trio of suburban, married couples together at two dinner parties given on consecutive nights, but seen simultaneously on the stage.

February 18-19 & 25-26, 2005 - 7:30 p.m.
February 20 & 27, 2005 - 2:00 p.m.



Written by John Patrick

In this comedy, a kindly, middle-aged recluse living in a tumbledown mansion at the edge of the city dump has her strange world invaded by three scoundrels on the run from the authorities.

April 22-23 & 29-30, 2005 - 7:30 p.m.
April 24 & May 1, 2005 - 2:00 p.m.

2004-2005 Season Ticket Order Form

Name _____

Address _____

City _____ Zip _____

Phone _____

For patronage contributors, please print name below as you wish it to appear in the program.

Send check (payable to Theatre 7) with this form to:

Theatre 7 Season Tickets — P.O. Box 972 — Decatur, Illinois 62525

Check with your employer about a possible Matching Gift Program.

No.	Category	Am't Each	Total
___	Season Tickets (under 62 yrs.)	\$30.00	\$ _____
___	Season Tickets (62 yrs. & older)	27.00	_____
___	Saint*	1,000.00	_____
___	Archangel*	500.00	_____
___	Angel*	250.00	_____
___	Cherub*	150.00	_____
___	Patron*	100.00	_____
___	Friend**	50.00	_____
___	Membership	15.00	_____
___	Add'l Member (not to exceed \$30.00/family)	7.00	_____
			Total Remittance \$ _____

*Includes 2 season tickets and 2 memberships

**Includes 1 season ticket and 1 membership



Applauding The Past – Directing The Future

We want to salute the many generous donors to our Capital Campaign. Through their support, The Little Theatre On The Square is able to continue the tradition of live, professional theatre in Central Illinois, as well as expand its offerings through its Educational Outreach programs. Each of you has our deepest appreciation for making this long-time dream come true!

Encore Society

(\$200,000 +)

Archer Daniels Midland Company
State of Illinois

Producer's Society

(\$100,000-199,999)

City of Sullivan
Consolidated Communications

Director's Society

(\$50,000-99,999)

Agri-Fab
First Mid-Illinois Bancshares, Inc.
Hydro-Gear
Dr. James K. & Karen S. McKechnie

Designer's Society

(\$25,000-49,999)

Anonymous Board Members
Ken & Deb Best

Choreographer's Society

(\$10,000-24,999)

Charles & Linda Adams
Anonymous Donors
First National Bank
Nina & Philip Martin –
In Honor of Art & Mamie Palmer
Gary & Tess Melvin
Mervis Industries, Inc.
Parke Warehouses
Tami & Don Robinson
Scott State Bank
United Graphics, Inc.
Ron & Sharon White

Actor's Society

(\$5,000-9,999)

A.E. Staley, Jr. Foundation
Leonard & Carol Anderson
John & Carol Benda
Steve & Debbie Benefiel
Dr. Joseph & Christine Borreggine
Central Illinois Physical Therapy
Bob & Cathy Hagen
Dr. Mack & Margaret Hollowell
Jon & Jo Ann Laible
David & Mary Martell
Wayne & Patti Meinhart
Pearman Pharmacy, Inc.
John Schultz Family
Sam & Barb Scott
Jimmy T. & Kathryn L. Stewart
Mary L. Storm

Spotlight Society

(\$1,000-4,999)

BKD, L.L.P.
Dr. Tom & Emilee Best
Christopher Bracken
Dick & Sue Ann Cain
Charles & Donna Coffey
Bruce & Mary Beth Condill
Gery & Cheryl Conlin
Kevin & Bonnie Corley
Steven K. Foglia
Les & Ellen Hall –
In Memory of Kay Kimery
Marty & Lori Harbaugh
Hardware State Bank
Tom & Peggy Hargis
Sisters / Bud & Pam Harris
Holmes, Radford & Avalon, Inc.
Don & Pam Jesse
Mary Ann & John Koucky
Mr. & Mrs. Michael Martin
McMullin-Young Funeral Home
Charlene Oberlin
Bob & Lana Pancoast
Mary Lou Randolph
Reed Funeral Home, Ltd.
M. Seth Reines
Otto & Lisa Rincker
William S. Rowland
In Memory of Rev. Stewart Rowles
SBC Foundation
The Samuel Family Foundation
Mr. & Mrs. Dennis Sandschafer
Marilyn Sears
Siemer Milling Company
Henry M. Staley Charitable Trust
Rick & Cindy Steward
Lew & Patty Stiff
Jim & Judy Yockey

Center Stage Society

(\$500-999)

Schenck & Margaret Brooks
Michael Fortner & Leanne Bales
C. Michael & Beth A. Hewing
Anne Higley & Eric Benson
Robert L. Hills –
In Memory of Patricia Lowe
John & Suzanne Lechman
Tom & Mary Little –
In Memory of E.M. "Buck" Chastain
Mike & Linda Sullivan
Troy & Patti Swinford
Richard & Linda Voltz

The Chorus Society

(\$250-499)

Anonymous Donors
Rich & Sharon Buckler
Mr. & Mrs. Merle W. Chapman
Buck & Shana Condill
Bob & Nancy Elder
First Neighborhood Bancshares, Inc.
Don & Jan Grewell
Mr. & Mrs. Richard L. Hettinger
Dennis & Mary Hutchings
Irwin Telescopic Seating Company
Juanita E. Jennings
Bob & Debi Johnston
Claire Krukenberg
Jeanne & Fred LaBree
Jan & Lee Lauderdale
Henry & Dianne Merz
In Memory of Beth Moss
Nancy Newell
Denis & Lori Roche
Paul & Anna Jane Sager
Mabel E. Shuman
Ada T. Songer –
In Memory of E. Lowell Songer
Russ & Marge Stark
David & Linda Sudkamp
Mark & Debbie Vandermyde
Ron & Sandra Ware
Watts Copy Systems
Betty E. Zeaman
Becky & Claire Zimmerman.
Ruth (Zimmerman) Kampwerth

The Extras

(\$10-249)

Anonymous
John & Cathy Anderson
Lyetta Awalt –
In Memory of Fred L. Awalt
Cathy Babbs
Randy & Marcy Baird
Roger & Eileen Baker
Mr. & Mrs. Gene Barkley
Norma Jean Barnard
Ronald & Carol Batterham
Joan Beetle
Doug & Sally Bock
Mildred & Wayne Bohlen
George & Winona Bolinger
James & Leona Bolles
Mark & Carol Bomball
Jim & Marlene Bray
Jerry & Gail Brenner
Tom & Jackie Brinkoetter
Sally & David Brown
Don & Gerry Brown

(continued)

Applauding The Past – Directing The Future

Listing of Donors

The Extras (continued)

(\$10-249)

Helen Brown
Howard & Helen Brown
David & Ellen Bruce
Carl & Shirley Bruegger
Mike & Vicki Budde
Warren & Jo Burgard
Larry Cannon
Don & Joan Carnes
Norma Jean Carter
Gail Casey
Clara L. Clark
Ed & Mary Lou Cookson
Carl & Janice Cox
Walter & Mary Dannewitz
Beverly Dean
Mary Beth Dedman
The DeLong Family
Donald G. & Karen Doty
Marilyn Dufford
Chuck & Sharon Eberly
Fay Eddings
J. Andrew Edwards
Duane & Beverly Ehler
Eleanor Elliott
Judy Enis
Esther Fessant
Dale & Judy Ford
Jim & Jerry Geekie
John & Sandra A. Geis
James Neil Gentry
Michael & Melanie Gibala
GlaxoSmithKline Foundation
Barbara A. Glover
Pauline W. Goldstein
Cindy Gollus
Patricia A. Graven –
 In Memory of William G. Graven
Dr. William & Susan Grieve
Mike & Linda Grose
Barbara Hall
Jim & Leigh Hammer Family
Bob Hantel
Bob & Glenda Harris
Ron & Nedra Hash
Elmer & Virginia Hawkins
Bill & Susan Seaforth Hayes
Hefner, Eberspacher & Tapella –
 Attorneys at Law
John & Bonnie Hefner
Henry Heiland
Karen S. Heintzelman
Isabel Henderson
Ramona Henricks
Dean & Veva Henson
James & Florence Holaday
Joyce Holste
William & Selma Horton
Mary Lou Hubbard & Don Dawson
Leon & Karen Huffmaster
Bob & Laura Hussey
Dorothy Jackson
William Michael & Jacqueline Joines

Ben Jones
Mike & Ruth Keown
Thomas & Rebecca Kerkhoff
Walter & Marlene Kincaid
Daniel & Laurie King
Susie Kircher
Ralph & Donna Kobitter
Jim & Lillian Korous
Kathleen Kunzeman
Tod & Marge Lancaster
Dorothy A. Langford
Norma Lansing
Sandra Lautrup
Mr. & Mrs. Howard Lawrence
Carl Lebovitz –
 In Memory of James K. Lively
Robert & Trudy Lewis
Robert L. Lewis
Beryl A. Linders
Donna Livingston
Mary Jane Lock
Charles Lunceford
In Memory of Bill Madden
Nancy Mains
George & Marion Marquis
Jack & Margaret McCoskey
Doug, Kelly & Megan McDevitt
Virginia McKinney
Eleanor Means
Janet Meier
Michael and Dorothy Merry
Joyce Miller
Linda & Michael H. Miller
Mr. & Mrs. John Richard Mills
George & Linda Mitchell
Eleanor Moma
Betty R. Monroe
Irene Moody
Melody Moore
Pam Morgan
Judy Murphy
William & Rose Mary Myers
Thomas & Jo Ann Niemerg
Betty Noffke
Dennis & Judy Ozier
Barbara Pals
Lindsey & Linda Parrish
Ed & Nancy Pazdzior
Kurt & Brenda Pierce
Marilu S. Platzbecker
Doug & Linda Poe
Gene & Joyce Prince
R.R. Donnelley Foundation
Phyllis J. Ranney
Jerry & Marsha Robbins
Wanda Roberts
John & Nancy Royse
Ken & Eva Ruble
SBC Foundation
Richard & Yvonne Schroeder
Mr. & Mrs. Donald L. Scoles
Florence Seales

Mr. & Mrs. D.O. Shank
Lois J. Shelton
David Shepherd –
 In Honor of Maurice & Rose Mary Shepherd
Mary L. Shute
Mark & Renee Smith
Lowell & Theresa Spurgeon
Rhodell & Gladys Sterchi
Scott & Jan Stevens
Arthur & Lois Strom
Nancy C. Tennant
Terry J. Titus
Janet Tolly
Cora Ruth Turner
John & Susan Tynan
Curt, Peggy, Ashley & Michelle Valenti
Les & Bobbie Vaughan
Dale & Virginia Vogel
Todd & Lynelle Wachtel
Don & Patty Walden
Sue & Bob Walker
Sue Weaver
Jeri Wenberg
Terry & Robin Westendorf
Leroy Wetzel
Mr. & Mrs. Merlin Wetzel
Lulu F. White
Marjorie P. Whitley
Russell & Louise Wiley
Harold & Nadine Wilkey
Patricia A. Williams
Craig & Cynthia Wise
Gilbert & Sharon Wood
Fay Woodrich
Cathy Wright
Jan & David Young
Dan & Diane Zerrusen

Applauding The Past – Directing The Future

Thank you to these donors to our *Adopt-A-Seat* campaign.

If you would like to “adopt” your own seat and have your name included on our special *Adopt-A-Seat* plaque in the lobby, please request a Pledge Card at the Ticket Office or call the Business Office at 217-728-2065 for more information.

Anonymous	Ed McCammack
Dale & Donna Arnold	Melodie McCammack
Marion Best –	Lorin Nevling
In Memory of Bob Best	Grace, Gabe & Gillian Oetting
Roland & Betty Best	Jeff & Trina Oetting
Don & Margie Black	Nancy Penney –
Kelly Bland	In Honor of Norton & Claire Penney
Carolyn Boblitt	Psi Iota Xi, Theta Psi Bethany
Mr. & Mrs. Karl Borton	Leo & Anne Pondelick
Alora J. Bowles / Donald W. Dodson	Joy Rathe –
Tom & Kathy Bunfill	In Honor of Francis & Alice Phillips
Lloyd A. Bury	Raymond Renner
Larry & Carol Bushu	Sheila Renner
CF & H Insurance, Sullivan & Monticello	Bill Rich
Jud & Sandra Cameron	Cheri Rich
Central Illinois Physical Therapy	Don Robinson
Betty J. Davis	Hayley Robinson
Greg & Micah Dickens	Tami Robinson
Lynn & Nancy Elder	Tyler Robinson
Ralph C. Elke	Pauline Rowles –
Susan H. Elke	In Memory of Rev. Stewart Rowles
Charla Bartscht Fischbach	Bob & Markey Saltmarsh
Richard Fischbach	Art & Cheryl Sappington
Jibby Julio Florini	Doug & Peg Schmalz
Ruth Florini	Don & Linda Schmidt
Patricia A. Funk	Bonnie Scrimager
Betty L. Glasscock	Ralph Scrimager
David & Dawn Grapes	Mr. & Mrs. Ron Spears
Mr. & Mrs. Donald Greffe	Ken & Joan Struttman
Felix & Patricia Hagerman	In Honor of Jerry & Barbara Sullivan
Barbara Harshman	Kyra Faith Swearingen
Madelyn Harshman	Dr. & Mrs. Gregory L. Totel
Dr. & Mrs. Jerry Hastings	Tim & Julie Wilkerson
Dr. Maria Horvat & Dr. James Kohlmann	Jon and Lori Yelenick
Illinois Masonic Home	Earl & Martha Yockey
Mark & Ann Jackson	In Memory of Marisa Yockey
Mr. & Mrs. Randall Kampfe	
Dr. Philip & Peggy Kepp	
Dick & Robin Kruckeberg	
Kathleen & Thomas LeVeck	
Dr. Larry Leventhal	
Jytte Leventhal	
Mr. & Mrs. Michael Martin	

The Little Theatre On The Square's 2004 Donors

We wish to thank and acknowledge the following individuals, foundations and corporations who have made contributions to our general operating fund. Their generous support helps us to keep our ticket prices low, while keeping our production values at their highest levels possible. These are this year's donors as of press time. Donors to our Capital Campaign are listed elsewhere in the program.

Stars (\$2000-\$4999)

Tate & Lyle, Decatur

Performers (\$1000-\$1999)

Ken & Deb Best, Kankakee

Patrons (\$500-\$999)

James O. & Sona Beavers, Taylorville
Doug & Peg Schmalz, Decatur

Benefactors (\$250-\$499)

Charles & Linda Adams, Mattoon
Chuck & Dianne Beetz, Monticello
Larry & Carol Bushu, Arcola
Gery & Cheryl Conlin, Arthur
The First National Bank-Mattoon Community Banking Centers
Larry & Marty Jones, Sullivan
Charlene Oberlin, Effingham
Pearman Pharmacy, Inc., Paris
Roger & Verna Tice, Sullivan

Advocates (\$125-\$249)

Steven K. Foglia
Chris Bracken, Decatur
Dr. & Mrs. Jerry Hastings, Mattoon
John & Mary Ann Koucky, Decatur

Saints (\$100-\$124)

Anonymous
Shelby & Marjorie Brownfield, Shelbyville
Rich & Sharon Buckler, Arthur
Lloyd A. Bury, Arthur
Dick & Sue Ann Cain, Decatur
Bob & Pat Cannon, Camargo
Lewis & Barbara Clark, Decatur
Sherm & Margie Doolen, Salem
Bob & Cathy Hagen, Sullivan
Beth & C. Michael Hewing, Teutopolis
Stu & Carole Hott, Sullivan
Dick & Barb Jostes, Moweaqua
Kathleen & Tom LeVeck, Mattoon
Jerry & Janet McDaniel, Newton
Bill & Jill Morgan, Mattoon
Dr. Henry & Esther Poterucha, Effingham
Steve & Ruth Rankin, Mattoon
In Memory of R. Jeffery Rogahn
In Memory of Donald L. Shawver From Alice, Charleston
Patty & Lew Stiff Doncaster, Mattoon
Arthur & Karen Willaredt, Jr., Mattoon

Angels (\$75-\$99)

In Memory of Ted Streenz, Jr.

Guardians (\$50-\$74)

Anonymous
Jim & Jean Bailey, Danville
Bartscht-Fischbach Insurance, Shelbyville
Lelia Bonnsetter, Charleston
Robert V. & Geraldine Eldor, Sullivan
Dr. Edward & Barbara Hoppin, Mattoon
Pauline Jurgens, Decatur
Howard & Katheryn Lindecker, Charleston
Barbara Pals, Teutopolis
Doug & Linda Poe, Effingham
Ken & Eva Ruble, Humboldt
Bonnie Ruecker, Decatur
Phyllis & David Sardella, Charleston
Maury & Rose Mary Shepherd, Charleston
Dwight & Ann Singer, Arthur
Ken & Joan Struttman, Decatur
Ramona A. Tomshack, Charleston
Ginger Yakey, Stewardson

Friends (\$25-\$49)

Jack & Caroline Beaty, Decatur
Marilyn M. Brown, Decatur
Mike & Vicki Budde, Mattoon
Norma Jean Carter, Windsor
David & Jeanine Freyling, Decatur
Betty L. Glasscock, Gays
Mike & Linda Grose, Sullivan
Bill & Roberta Hollada, Mattoon
Max & Louanna Jaeger, Mattoon
Hal & Mary Kottwitz, Mattoon
George Lauderdale, Mt. Zion
Doug, Kelly & Megan McDevitt, Effingham
Barbara & Joseph McKenzie, Mattoon
Eleanor Means, Chrisman
Jim & Nancy Nelson, Effingham
Monty & Jolene Nohren, Effingham
Leo & Virginia Perucca, Effingham
Mrs. Evelyn Preece, Jasonville, IN
Raymond & Sheila Renner, Stewardson
Pauline Rowles, Sullivan
Dallas & Nancy Seitz, Moweaqua
Louis Stanke, Mattoon
Reverend Russell & Marge Stark, Charleston Harold
& Nadine Wilkey, Windsor
Ken Will, Teutopolis
Arthur & Joanne Willaredt, Sr., Mattoon



The Little Theatre On The Square, Inc.

The Little Theatre On The Square is governed by a not-for-profit corporation, The Little Theatre On The Square, Inc. The Board of Trustees is made up of representatives from communities throughout the theatre's market area. Following is a list of the 2004 Board of Trustees:

2004 Officers

President	Don Robinson
Vice President	Gary Swearingen
Secretary	Margaret Hollowell
Treasurer	Stanley Van Hook

Region One Trustees

Linda Carlton-Huber	Sullivan
Bruce Condill	Arthur
Mary Beth Condill	Arthur
Dixie Dickens	Sullivan
Evan Dickens	Sullivan
Mary Ann Hargis	Sullivan
Bud Harris	Sullivan
Pam Harris	Sullivan
Lonnie Holder	Sullivan
Pauline Rowles	Sullivan
Bridget Van Hook	Sullivan
Stanley Van Hook	Sullivan
Ronald White	Sullivan

Region Three Trustees

Debbie Benefiel	Paris
Steve Benefiel	Paris
Larry Bushu	Arcola
Kevin Corley	Champaign
Ellen Hall	Tuscola

Region Four Trustees

Myra Oltman	Effingham
Lisa Rincker	Strasburg
James Yockey	Shelbyville
Judy Yockey	Shelbyville

Region Two Trustees

Cathy Anderson	Mt. Zion
John Benda	Decatur
Dick Cain	Decatur
Sue Ann Cain	Decatur
Mary Little	Decatur
Bob Pancoast	Decatur
Don Robinson	Mt. Zion
Tami Robinson	Mt. Zion
Mary Total	Decatur
Jeri Wenberg	Mt. Zion

Region Five Trustees

Christine Borreggine	Charleston
Dr. Joseph Borreggine	Charleston
Anne Higley	Charleston
Robert Hills	Martinsville
Margaret Hollowell	Charleston
Michael Martin	Mattoon
Mary Lou Randolph	Charleston
Marilyn Sears	Mattoon
Jim Stewart	Charleston
Lewis Stiff	Mattoon
Patty Stiff	Mattoon
Gary Swearingen	Neoga
Dr. Kaye Woodward	Charleston

2004 Summer Company

Leonard A. Anderson
Executive Director

Administration and Support Staff

Business Manager.....Lori Harbaugh
Education Director.....Marie Jagger-Taylor
Marketing Director.....Mary Dilliner
Ticket Office Managers.....Arlene Denning,
Becky Zimmerman
Administrative Assistant.....Donna Newcome
Ticket Office Assistants....Tara Bates, Erin Denney,
Laura Elder, Jamie Palmer, Jill Seelhofer
House Manager.....Lara Seelhofer
Photographer.....Carol Anderson

Production Staff

Assistant Stage Managers.....Kim Gifford,
Stacy Walker
Technical Director.....Adam Liston
Master Carpenter.....Carl Sage
Carpenters.....Bob Cole, Ben Edwards
Props Master.....Sarah Palmer
Master Electrician.....John Tibbetts
Sound Engineer.....Dan Jones
Spotlight Operators.....Frank Austin, Amber Cole
Costume Shop Foreman.....Jennifer Peterson
Wardrobe.....Lauren Gire

M. Seth Reines
Artistic Director

Artistic Staff

Associate Artistic Director.....Michael Haws
Guest Directors.....Ed Flesch, Marie Jagger-Taylor,
J. Thomas Kidd
Musical Directors.....Kevin Finn, Jason Yarcho
Choreographers.....Paul Aguirre,
Marie Jagger-Taylor, J. Thomas Kidd,
Chrissy Wright
Scenic Designers.....Bernadette Brennan,
Tom Tutino, Noel Rennerfeldt
Lighting Designers.....Matthew Gross,
John Patrick McCarthy
Costume Designers.....Lauren Lowell,
Kathryn Wagner
Equity Production Stage Manager....Tom Reynolds

Performance Company:

Equity Actors...Paul Aguirre, Sierra Boggess, Nick Dalton, Michael Haws, Marie Jagger-Taylor, Patrick McCarthy, Amy Lyn McDonald, Anna McNeely, Chrissy Wright

Non-Union Actors.....Tyler Albright, Barry Anderson, Braydon Babbs, Andrew Bero, Dick Borders, Matthew Burns, Jeff Farber, Tori Hicks, Dawn Hollis, Mitchell Hollis, Alex Jorth, Bryan Lefeber, Ian Liberto, Anthony Majewski, Ann Morrow, Elizabeth Pugh, Cheryl Sanders, Eddie Schneckner, Sharon Slaughter, Angie Smith, Ryan Strand, Natalie Wisdom, Cortney Wolfson

Musicians.....Casey Fitzpatrick, Tim Gillins, Jonathan Harris, Al Legutki, Terrance Mayhue, Melissa Reed, Han-Yuan Wang

The Little Theatre On The Square is a member of



NATIONAL ALLIANCE *for* MUSICAL THEATRE

The National Alliance for Musical Theatre, founded in 1985, is the only national service organization dedicated exclusively to musical theatre. Its 137 members include theatres, booking and presenting organizations, universities, and individual producers. Located throughout 33 states and 6 countries, member companies vary substantially in size, structure, and purpose, reflecting the increasing diversity of the field. Their common bond is a shared commitment to preserve and enhance this uniquely American art form.

Actors' Equity Association

Actors' Equity Association (A.E.A.), founded in 1913, represents more than 45,000 actors and stage managers working in theatres across the U.S. Equity negotiates wages and working conditions, and provides benefits, including health and pension plans, for its members. Equity's mission is to advance, promote, and foster the art of live theatre as an essential component of our society. Wherever professional theatre exists, Equity exists.



Illinois Printing Services

I N C O R P O R A T E D

The Little Theatre On The Square
16 East Harison
Sullivan , Illinios 61951

It gives us great pleasure to congratulate The Little Theatre On The Square for their Grand Re-Opening. It was a very big task! The staff, support group and the community can take great pride in the fact that we have such a wonderful venue for the performing arts. Your 47 years of continuous operation is a major asset to the area and we are proud to have you in our community.

Our fine staff of printing professionals has over 50 years experience in the printing industry. Marketing our services primarily to our community, Illinois Printing Services, Inc. strives to promote the local economy by providing quality products, timely services and value to our customers.

Illinois Printing Services, Inc. supports many local charitable organizations including, The American Cancer Society, RSVP, Celebration of Life and MDA. These groups and others improve the standard of life for all of us in our community.

Congratulations
Staff and Employees
Illinois Printing Services, Inc.
Sullivan, Illinois

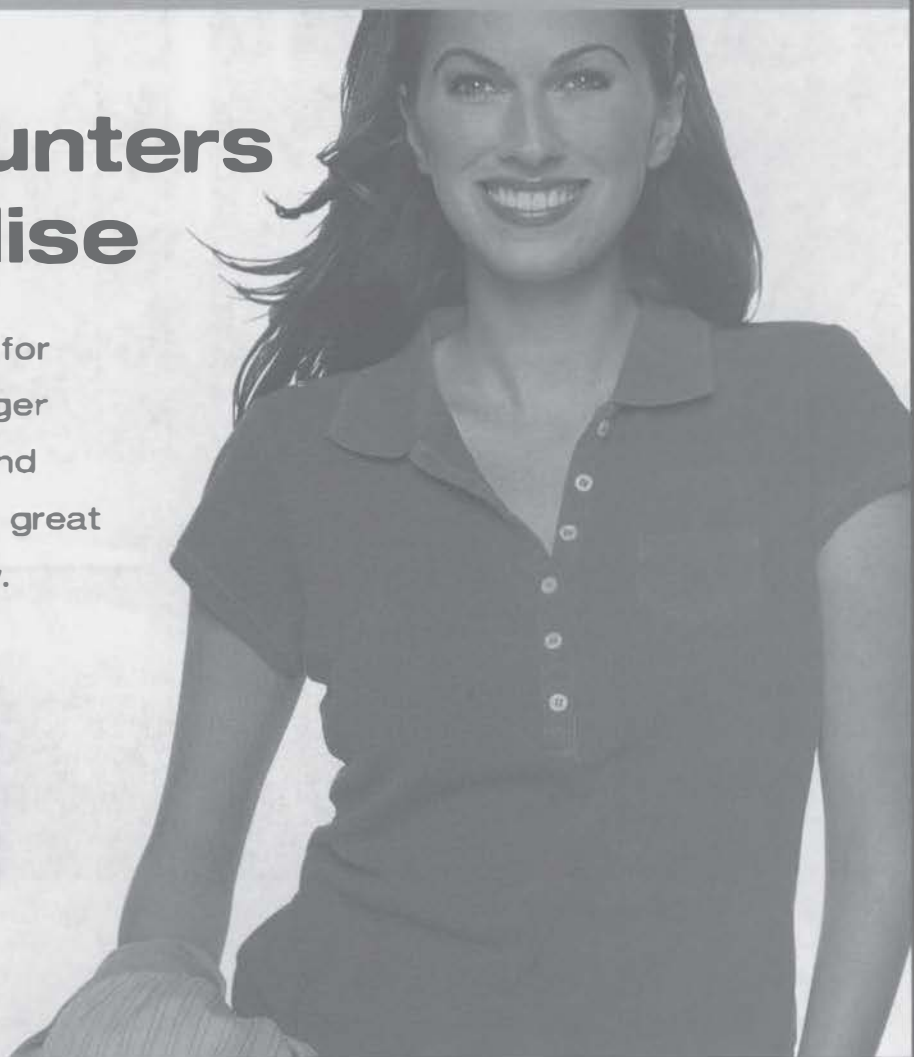
Formerly Tuscola Factory Stores

Tanger[®]Outlets

POLO RALPH LAUREN FACTORY STORE • JOCKEY • REEBOK OUTLET STORE
GAP OUTLET • CARTER'S • SAMSONITE CO. STORE • TOMMY HILFINGER
BASS • WILSONS LEATHER OUTLET • KORET • OSHKOSH • AND MANY MORE!

bargain hunters paradise

Come join in the hunt for
great bargains at Tanger
Outlet Center. You'll find
brand name quality at great
outlet prices everyday.



BUY DIRECT FROM THE MANUFACTURER AT OVER 45 BRAND NAME OUTLETS
Tuscola, IL • Interstate 57, Exit 212, Route 36 • 217.253.2282
Mon-Sat: 10-9, Sun: 11-6 • www.tangeroutlet.com

**FREE
TANGER
COUPON BOOK!**

FREE TANGER COUPON BOOK

Bring this ad to the Center Management office for a
free Tanger Coupon book worth hundreds of dollars in
outlet savings. Expires 12/31/04. Code 715204.

*The Little House
On The Prairie*
Bed & Breakfast

*Salutes The Little Theatre On The Square's
fabulous renovations and 47th Season*



14 Years of Ambience and Warm Hospitality

Queen Anne Victorian country homestead surrounded by acres of woodlands, gardens, swimming pool & pond...has hosted guests from forty-eight states and twenty five countries.

Guy Little and Nick McNamer's "Home of the Stars"

Full Breakfast, Theatre & Dinner Reservations, Hot Tubs
Private Baths, Four Rooms and Suite

*Open Friday and Saturday * June - August*

Patterson Road - P.O. Box 525 - Sullivan, IL 61951 For
brochure, information or reservations call:
217-728-4727

www.lhonline.com/il/littlehouse/

Exclusively Featuring:
Pandora & Message Connexion
At
Kadoozies
Exceptional Jewelry • Toys • Gifts

Klutz Books • Travel Games
Wooden Puzzles • Outdoor Fun Toys
Thomas the Train • Educational Insights
Coming Soon: Hello Kitty
Also
Dips • Mixes • Smoothies
Pastas • Soups • Candy

Kadoozies

On the Square in Sullivan
11 S. Main St • Sullivan, IL • 61951
(217)728-7220
Tues - Sat • 10:00 am - 8:00 pm



Hydro-Gear®



Hydro-Gear is proud to support the community by its
contributions to education and the arts.

A World Leader in Hydrostatic Transmissions

Since 1991 Hydro-Gear, of Sullivan, Illinois, has led the field in the design, manufacture, sales and service of quality hydrostatic transaxles for the lawn and garden industry. The consumer has come to rely on the Hydro-Gear name for transaxles that provide the homeowner with greater maneuverability to take care of those hard-to-mow areas.

For riding mowers from the backyard to the baseball stadium there is one name to remember.

Hydro-Gear®

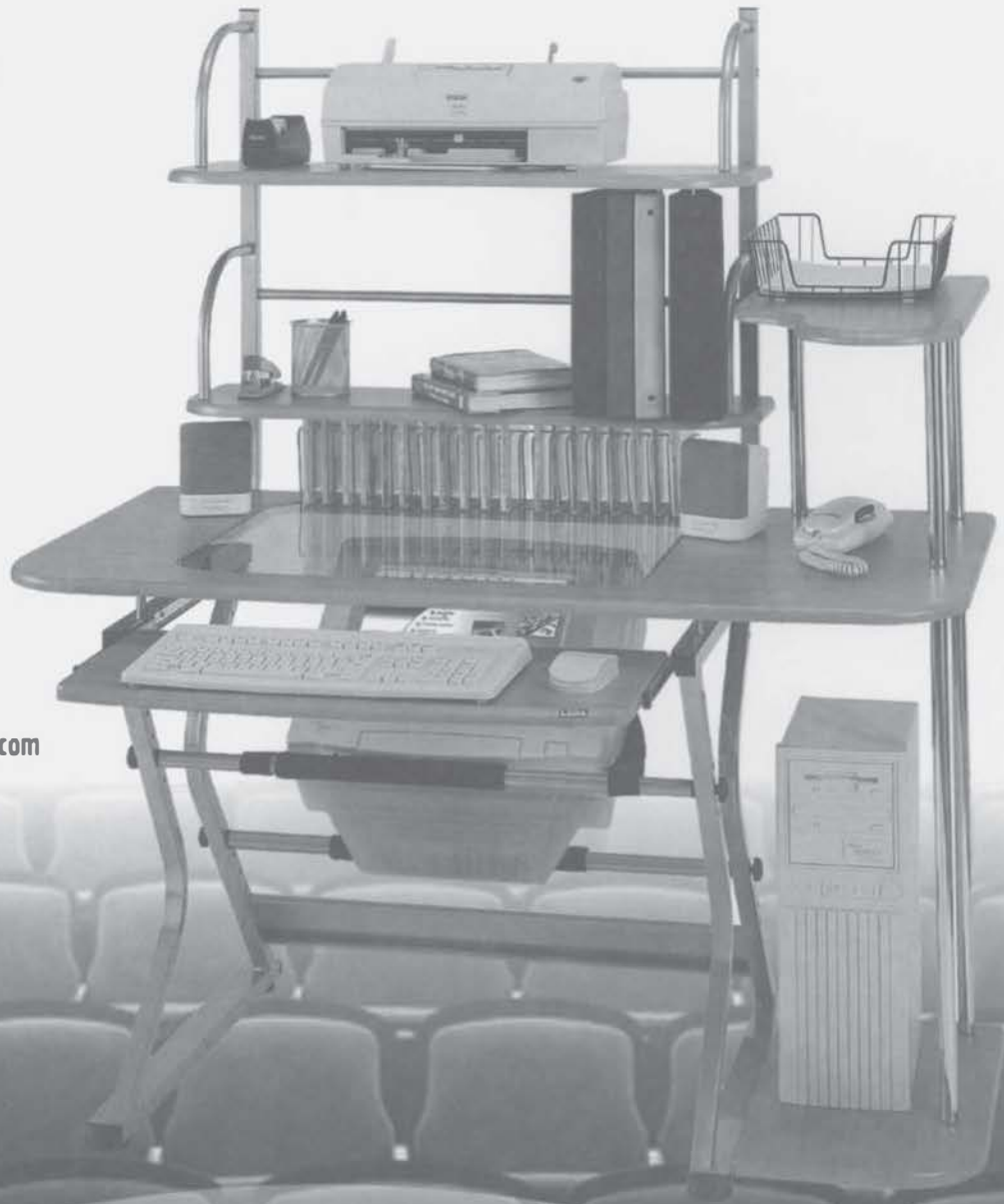
We set the wheels in motion.®



The Best Seat in the House...

is at a Nova Downview Series computer desk!

Now available
at select area
WAL★MART
stores!



800-730-6682
www.novadesk.com
downview@novasolutionsinc.com

Nova Solutions is proud to support
The Little Theatre on the Square

For life's many stages...
there's First Mid.

 **First
Mid- Illinois
Bank & Trust**
Because You Expect More.



Business

Growth

Retirement

New Home

College

New Beginnings

Whether we're making it possible to buy a new home or finance a business, we're making a difference in the communities where our customers live and work. Helping our communities grow stronger helps build a stronger bank. First Mid strives to be an involved corporate citizen by supporting community development, education and social service initiatives. From checking accounts and loans for people in the community, to wealth management and full-service insurance through The Checkley Agency, Inc., our committed team of professionals is ready to help.



The Checkley Agency
Incorporated

The Checkley Agency, Inc. is a wholly owned subsidiary of First Mid- Illinois Bancshares, Inc. Insurance services are not deposits or obligations of the bank, are not insured by the FDIC or any governmental agency, and are not guaranteed.

Providing quality financial service throughout Illinois.
Logon to www.firstmid.com to find a location near you!

