

1-13-1989

Daily Eastern News: January 13, 1989

Eastern Illinois University

Follow this and additional works at: http://thekeep.eiu.edu/den_1989_jan

Recommended Citation

Eastern Illinois University, "Daily Eastern News: January 13, 1989" (1989). *January*. 5.
http://thekeep.eiu.edu/den_1989_jan/5

This is brought to you for free and open access by the 1989 at The Keep. It has been accepted for inclusion in January by an authorized administrator of The Keep. For more information, please contact tabruns@eiu.edu.

Weather
Sunny
Friday will be sunny,
high in the upper 30s.

Campus
Mr. and Ms. EIU
Get in shape and apply
for the
Second annual contest.
Page 5

Special
Parking lots
There are still stickers left
for parking on campus.
Page 3

Friday, January 13, 1989

The Daily Eastern News

Eastern Illinois University
Charleston, Ill. 61920
Vol. 74, No. 81
Two sections, 20 Pages

Researchers say health care unfair

CHICAGO (AP)—Blacks have less access to medical care than whites, are included in fewer clinical trials of new drugs and—in at least in one state—tend to get less aggressive treatment for heart disease, new research indicates.

One in 11 blacks reported not receiving health care for economic reasons, compared with one in 20 whites, according to a 1986 nationwide telephone survey of 10,130 representative U.S. residents, researchers said.

Blacks were less likely to have health insurance, and those who did were considerably less likely to be covered by a private insurance carrier and more likely to live in a state with less generous Medicaid benefits, the researchers said.

Their report, in Friday's Journal of the American Medical Association, said 37.2 percent of blacks overall had not seen a doctor in a year, compared with 31.7 percent of whites.

The disparity was even more glaring for people in poorer health, with 32.2 percent of blacks in that group going a year without a doctor's care, compared with 17.5 percent of whites, researchers said.

Blacks were more likely than whites to live in one-adult households, perhaps making it harder for them to get to a doctor, said

the researchers, led by Robert J. Blendon of the Harvard School of Public Health in Boston.

And blacks who did get to a doctor may not have been treated as well as whites, the study suggested.

"Blacks were more likely than whites to report that during their last visit, their physician did not inquire sufficiently about pain, did not tell them how long it would take for prescribed medicine to work, did not explain the seriousness of the illness or injury, and did not discuss test or examination findings," the study said.

"This study reports disturbing trends," the authors said. "There continues to be a lack of parity in access to health care, and a consequent excess of unmet medical needs for blacks compared with whites."

This is true despite the fact that blacks, on average, are in poorer health than whites, and continue to have a 1 and 1/2 times higher death rate than whites of the same age as well as double the white infant mortality rate, the researchers said.

A related study in Friday's Journal, a theme issue coinciding with the anniversary of the birth of slain civil-rights leader Dr. Martin Luther King Jr., found that blacks are underrepresented in tri-



MICHELLE ZAWIN / Staff photographer

Already studying!

Terri Tate, a junior speech communication major, gets a head start on her reading Tuesday afternoon in the Buzzard building lounge.

als of new drugs. A review of 50 medical studies published from 1984 through 1986 revealed that blacks were included in less than two-thirds of them, said researcher Craig K. Svensson of Wayne State University in Detroit.

Of the 35 studies for which full racial data was available, 23 studies included a lower proportion of

blacks than lived in the cities where the studies were conducted, Svensson said.

"Race...may play an important role in the variability of drug response," he said, noting well-established differences between races in reactions to medications for high blood pressure. "It is, however, a variable that apparently few clinical investigators view

as potentially significant."

In a telephone interview Wednesday, Svensson said investigators—particularly for drug companies that are seeking Food and Drug Administration approval for new drugs—should include sufficient numbers of blacks in clinical trials to get meaningful data on possibly different responses to medications.

Money offered for alumni association to buy house

By TONY CAMPBELL
Staff writer

Money has been offered to the Eastern Illinois University Alumni Association to help pay for the purchase and improvements of a local "alumni" house.

Shelly Armstrong, secretary of university relations, said the Charleston Area Charitable Fund has offered \$35,000 to the alumni association if the association can raise a light amount of funds from members. "The association would probably try to purchase an exist-

ing structure and then improve that building."

An alumni house would encourage a greater amount of alumni participation in campus activities, Armstrong said. "It (the house) would give the alumni a real sense of the school and a place to have reunions."

Armstrong said the main objectives of the association are to maintain records and statistics, assist in other activities such as homecoming and class reunions, and to create a medium for gradu-

ates to contribute to Eastern.

The alumni association members consist of anyone that has a degree or diploma from Eastern or has completed one term in good standing.

All members of the alumni association receive Old Main Line, a quarterly publication that tells of activities and events on campus. The Old Main Line has a circulation of more than 50,000 in the United States and other countries, Armstrong said.

In addition to the possibility of

an alumni house, new officers have been selected for the Alumni Association.

The new officers include Herbert T. Gaffigan, Jr., of Decatur, president; Robert L. Mitchell of St. Charles Mo., vice-president; Adeline Oxley of Glen Ellyn, secretary; and Barbara Haberer of Charleston as treasurer.

Along with the new positions, six board members have been re-elected to serve three year terms. The new members are Oxley, Haberer, Dr. Arthur Aikman of

Carbondale, Nancy W. Owen of Mattoon, Paul E. Hoffman of Decatur and Scott E. Harrison of Downers Grove.

Members with terms expiring in 1989 include Gaffigan, Neil C. Henrikson of Roselle and Gary C. Rogers of Danville.

Terms expiring in 1990 include Ernest Ballard of Altamont, Wallace Beeler of Morton, Ed Cobau of Springfield, Bob G. Miller of Auburn, Mitchell and Lyndon B. Wharton of Springfield.

Classes, News break for King's birthday

Although spring semester classes have just begun, students and faculty will get a break from classes Monday in observance of Martin Luther King Jr.'s birthday.

In addition, The Daily Eastern News will not be

published Monday in observance of the national holiday. The News will resume publication Tuesday, with the classified ad deadline for that issue at 2 p.m. Friday.

Spring semester classes will also resume Tuesday.

Bush names two more to cabinet positions

WASHINGTON (AP)—President-elect Bush completed the top ranks of his administration today by selecting retired Adm. James D. Watkins to be energy secretary and former Education Secretary William J. Bennett to lead the nation's fight against drugs.

Bush made the announcement a few hours before holding a dress-rehearsal meeting of his Cabinet at Blair House, the government guest quarters across from the White House.

In introducing Bennett, Bush said

the new post "is a tremendous undertaking and the bottom line is this: we need fully and completely to marshal the nation's energy and intelligence in a true, all-out war against drugs. We can and we must win that war."

On the troubles facing the new energy secretary, Bush said, "I'm committed to solving the problems that exist within our atomic energy-defense complex. I'm sure that with Jim Watkins by my side, we're going to do just that."

Watkins, 61, was a nuclear subma-

rine commander before becoming chief of naval operations under President Reagan, a job he held until 1986. More recently, he headed a presidential commission on AIDS which last year recommended new laws to protect victims of the deadly disease from discrimination.

He is considered an authority on nuclear warfare.

The Energy Department faces a multi-billion dollar cleanup of the nation's aging and increasingly unsafe nuclear weapons plants.



Nuclear complex to be updated

WASHINGTON - President Reagan Thursday released a report calling for increased spending of \$81 billion to modernize the nuclear weapons complex over the next 20 years and the closing of four major facilities.

Reagan said the 31-page report "will enable the administration and the Congress to adopt a long-term approach to modernization rather than a piecemeal response to the problems within the nuclear weapons complex."

It recommended stopping nuclear fuels processing at four sites where problems have been highly publicized: the Rocky Flats Plant near Denver, the Hanford Site near Richland, Wash., the Feed Materials Production Center at Fernald, Ohio, and the Mound Plant in Ohio.

"Waste management and environmental restoration at these sites will continue until completion," the report said.

The report also said that the only three U.S. reactors capable of producing tritium, a critical element in modern thermonuclear weapons, could not be restarted until late 1989. The three reactors, all at the Savannah River Plant, in Aiken, S.C., have been shut down since last April undergoing changes to make them safer.

"In spite of these improvements and increasingly extensive maintenance, the reactors may not be able to achieve acceptable production efficiencies," said an unclassified version of the report, released at the White House.

Man arrested in nerve gas attempt

NEWARK, N.J. (AP)—U.S. Customs agents on Thursday arrested a Korean-born naturalized citizen in an alleged international conspiracy to buy and export missiles and nerve-gas weapons from the United States, officials said.

A complaint filed in U.S. District Court identified the man as Juwhan Yun, also known as J.W. Yun, 48, president of Komex International Corp. of Short Hills. The nature of the business was not immediately available.

Yun awaited arraignment Thursday on charges of conspiracy to export 500-pound bombs of

deadly nerve gas known as sarin, said Richard Mercier, agent in charge of the Customs office in Newark.

Mercier would not say where or how Yun allegedly intended to ship the gas.

Mercier said Yun negotiated with undercover Customs agents to purchase the bombs. Yun said conspirators also tried to acquire TOW I and TOW II missiles, Stinger missiles and Varian radar tubes, according to the complaint.

If convicted, Yun could receive up to five years in prison and a \$250,000 fine.

Sarin attacks the central nervous system, quickly causing convulsions and death. Mercier described the gas as "very rapid, odorless, colorless poison which can enter the body by inhalation, absorption or injection."

Also named in the complaint was Charles Caplan of Britain, who was described in court documents as the operator of Domino Associates in London.

Authorities said Caplan had approached Yun on Jan. 6. Yun later met with Caplan and two other people in a London hotel, the complaint said.

Investigators probe Boeing engine

LONDON (AP)—Investigators got a first look at the engines from a crashed Boeing 737 on Thursday, and British airlines flying similar craft said they found no evidence of faults in the engine warning systems.

The engines from the Midlands Boeing 737-400 that crashed Sunday were removed from an embankment along a freeway near the town of Kegworth and taken to nearby East Midlands Airport.

The plane, bound for Belfast, Northern Ireland, crashed while trying an emergency landing at the airport, killing 44 people and injuring 82.

Investigators are trying to determine why the plane's apparently working right engine was turned off during the flight when later examination showed it was the left engine that caught fire.

Speculations have focused on a faulty engine warning system and

crew error.

Most of the wreckage will be reassembled at the Royal Aircraft Establishment at Farnborough, said Ed Trimble, a senior inspector from the Department of Transport Air Accidents Investigation Branch.

The engines, however, will be taken to Paris for detailed inspection by the manufacturer following a preliminary inspection at East Midlands Airport, he said.

Fitness CLUB

- Nautilus
- Weights

\$65 Semester

WILB WALKER CENTER-CHARLESTON-348-8883

DOMINO'S PIZZA

WELCOME BACK STUDENT SPECIAL

YOUR CHOICE:

ANY 12" 1 ITEM PIZZA	ANY 16" 1 ITEM PIZZA
ONLY \$5.00	ONLY \$8.00

CALL NOW! **348-1626**

NOW HIRING - ALL POSITIONS

The Daily Eastern News

The Daily Eastern News is published daily, Monday through Friday, in Charleston, Illinois during fall and spring semesters and twice during the summer term except during school vacations or examinations, by the students of Eastern Illinois University. Subscription price: \$18 per semester, \$8 for summer only, \$36 for all year. The Daily Eastern News is a member of the Associated Press which is entitled to exclusive use of all articles appearing in this paper. The editorials on Page 4 represent the majority view of the editorial board; all other opinion pieces are signed. Phone 581-2812. The Daily Eastern News editorial and business offices are located in the North Gym of the Buzzard Building, Eastern Illinois University. Second class postage paid at Charleston, IL 61920. ISSN 0894-1599. Printed by Eastern Illinois University, Charleston, IL 61920.

NEWS STAFF

Editor in chief.....Amy Carr
 Managing editor.....Mike Fitzgerald
 News editor.....Kim Mikus
 Assoc. news editor.....Cathy Velasco
 Edit page editor.....Jeff Madsen
 Activities editor.....Matt Mansfield
 Administration editor.....Craig Edwards
 Campus editor.....Donelle Pardee
 City editor.....Pete Scales
 Govt. editor.....Cathy Podwojski
 Sports editor.....James Betzold
 Assoc. Sports editor.....Dave Lindquist
 Senior reporter.....Russell Stare

Verge editor.....Matt Maynard
 Assoc. Verge editor.....Becky Gambill
 Verge photo editor.....Steve Beamer
 Photo editor.....Michelle Zawin
 Art director.....Mark Fleiming
 Graphic editor.....Robb Montgomery
 Advertising mgr.....Cory Bollinger
 Sales mgr.....Lynne Wilson
 Promotions mgr.....Lori Buscaglia
 Student bus. mgr.....Melody Crickman
 Business mgr.....Glenn Robinson
 Editorial adviser.....John Ryan
 Publications adviser.....David Reed

NIGHT STAFF

Night editor.....Matt Mansfield
 Asst. Night Editor.....Cathy Podwojski
 Wire Editor.....Mike Fitzgerald

Sports editor.....David Lindquist
 Photo editor.....Michelle Zawin

Beat the high cost of going to college.



Beat the high cost of going to college. Take advantage of Amtrak's multi-ride ticket and SAVE UP TO 40%! Plus, the ticket is valid for an entire year.

So, every time you travel to Chicago, you can do it for the best price possible.

For more information, call your travel agent or call Amtrak at 1-800-USA-RAIL. Some restrictions may apply.

Service sponsored in part by Illinois Department of Transportation



Mury Harpster, owner of Mane J Oil Field Service skims oil off the campus pond with a vacuum truck Thursday.

MIKE FITZGERALD / Staff photographer

Officials say oil won't harm fish

By DONELLE PARDEE
Campus editor

Despite the recent spill of about three gallons of diesel fuel in the campus pond, the pond's inhabitants are doing fine.

Don Bufford, from the Illinois Department of Conservation Fish and Wildlife Division, said because it was diesel fuel the pond life would not be harmed.

Physical Plant Director Vic Robeson said the workers from the Precision Tank Services finished cleaning up the petroleum based fuel on Thursday.

Workers were draining underground storage tanks when the fuel accidentally leaked into the pond. Robeson said the spill looked worse than it actually was.

He added he was told the trout that live in the pond would not be harmed by the fuel because there was not that much spilled and cleaning procedures began immediately.

"Diesel fuel floats on the surface" and the residue in the water that was pumped into the pond before the fuel would only contain rust, which is iron oxide that won't harm the fish, Bufford said.

"Until I see the pond I can't determine the damage," Bufford said. "On my way into the office Friday I will stop by the pond and take a look."

Tornado prompts re-evaluation

EVANSVILLE, Ind. (AP)—A National Weather Service official has promised to re-evaluate Evansville's need for an advanced weather-tracking system following a tornado last week that demolished about one-third of neighboring Allendale, Ill.

A spokesman for Rep. Frank McCloskey, D-Ind., said weather service administrator Elbert "Joe" Friday has pledged to reconsider the Evansville bureau for a \$2 million Doppler radar system.

The weather service plans to install the high-tech systems in 115 locations nationwide between 1990 and 1995. One the list are Indianapolis, Louisville, Ky., and Paducah, Ky.

Plans call for Evansville to be "protected" by those three systems, which would provide "overlapping arcs" of radar coverage.

However, McCloskey and others contend that Evansville needs its own Doppler system because of the high number of tornadoes spawned in the bureau's 42-county coverage area.

The need to replace the Evansville bureau's aging radar system was obvious Saturday when residents of Allendale had less than five minutes warning of an approaching tornado that destroyed one-third of the town, officials said.

A Doppler system would have provided at least 20 minutes warning, according to local weather officials.

"We could have picked it up and followed it all the way across Illinois with Doppler," Norm Carroll, head meteorologist in Evansville, said Monday.

The Doppler system allows forecasters to "see" wind patterns. The units work by measuring the velocity of objects moving toward or away from the radar site. The system can detect swirling winds before they leave the clouds as tornadoes, thereby giving early warning.

Although proposed federal budget cuts are likely to close weather service offices in South Bend and Fort Wayne, the Evansville bureau will remain open, at least through this year.

Add/drops keep students in line

By AL LAGATTOLLA
and JEFF POMBERT
Staff writers

Students stood in line around the easy answer cash station in the Union, but not to get money, rather to add or drop classes.

The add/drop line not only ran through the union walkway, but down the stairs all the way to the money machine Thursday.

Once inside the awaited destination, the Union Ballroom, the lines continued. The longest lines appeared to be for economics, mathematics and English classes.

"It has been hectic," said speech department chair Doug Bock. "But no more hectic than usual," he added.

Registration director Michael Taylor said the problem with add/drops is that the process is very time consuming. He added at times the time students stood in line was about two hours.

Taylor said in the future he hopes to update the add/drop system using computers so students could call in schedule changes over the phone, but he did not say how soon this could happen.

Kathlene Shank, special education department chair, said she would welcome the change in the add/drop process.

"There has to be a better way, but I don't know what it is," Shank said.

Some students who found disappointment on Thursday agreed.

"I came in with three (classes) that I wanted and I didn't get any I wanted," said junior business major Brian Bodine. "I did get one that I really didn't want."

Bodine, who said he had been at the ballroom for 40 minutes, said he did not know whether he would wait for the classes to open.

"I'm debating whether I should stay or not," Bodine said. "I'm very tired."

However, some students were more critical of the system.

Dave Piper, sophomore physical therapy major, called the system a "ridiculous madhouse."

"There has got to be a better system," said Piper, who said he tried for a couple of hours to get three classes.

Most of the frustration came from those students who were trying to register for classes that they could not do without.

"Before, it has been okay because I could choose, but I need this class," said sophomore education major Tracey Nackle. "It's frustrating," she said.

And other students were resigned to the fact they would have to wait.

"It's always disorganized, but there's no better way to do it," said senior psychology major Scott Wilk.

Add/drops will conclude on Friday from 1-3:30 p.m. in the Union Ballroom.

Smoking bill introduced in Capital

SPRINGFIELD (AP)—Legislation to restrict smoking in most public places faces a tough fight in the Illinois General Assembly, but the time has come to "give us a breath of fresh air," the bill's sponsor declared Thursday.

Rep. Robert Terzich, D-Chicago, said his bill would prohibit smoking in all but designated areas of most public places. The legislation is identical to bills introduced

but unsuccessful — the past two years.

Terzich's bill was filed Thursday, one day after representatives of the American Cancer Society, American Heart Association and Chicago Lung Association joined the state Public Health Department in calling for passage of the measure.

Public Health Director Bernard Turnock told a news conference Wednesday that smoking costs the state an estimated \$2.*

billion per year for health care and other expenses—and tobacco related diseases claim the lives of about 15,000 Illinoisians annually.

"I think it's time that the smokers recognize non-smokers rights," Tezerich said. "If they want to enjoy their cigarettes, let them enjoy them in their own space or their own territory."

Court says rate boost can continue

SPRINGFIELD (AP)—The state Supreme Court refused Thursday to bar Commonwealth Edison Co. from collecting a 6 percent rate increase, but delayed a decision on whether to hear a lawsuit that contends the increase is illegal.

The court's brief order, issued without comment, denied a motion filed last week by Cook County State's Attorney Richard M. Daley, the Citizens Utility Board and two other consumer groups.

They contend that the two-step, \$480 million rate increase constitutes an illegal "bargain" between Commonwealth

Edison and Illinois Commerce Commission.

Because the second increase is to be followed by a rate freeze through 1993 — a measure that state regulators cannot impose unilaterally — the plan required approval by the utility as well as the ICC.

Daley and the consumer organizations had asked that the initial increase of \$235 million, or 6 percent, be halted until lower courts rule on the legality of the overall rate plan. That increase — which Edison said amounts to about \$11 per year for the

average residential customer — took effect Jan. 1.

A Cook County circuit judge temporarily blocked the rate increase in late December, a week after it was offered by the ICC, but that order was quickly overturned by a state appellate court panel.

A spokeswoman for the Citizens Utility Board, one of the consumer groups fighting the decision, said the Supreme Court's refusal to temporarily halt the rate increase doesn't mean the utility will prevail in the underlying case.

Student parking stickers still available

The estimated 450 student parking stickers available for spring semester were almost sold out Thursday.

Sgt. John Hensley, of the University Police, said there were only 50 parking stickers left and they will be on sale from 8 a.m. to 4 p.m. Friday at the University

Police station, at Seventh Street and Grant Avenue.

Hensley said he expects to sell the remaining stickers Friday, but doesn't know if there will be more stickers for sale later in the month.

"We'll be keeping an eye on the parking

lots" to see how full they are, Hensley said, adding he will mainly be watching the lot on Ninth Street because right now it is not being used.

If the Ninth Street lot becomes full in the next couple of weeks they will not be selling additional stickers, he said.

Editorials represent the opinion of the editorial board. Columns represent the opinions of the author.

The Daily Eastern News
Friday, January 13, 1989

There may still be hope for add/drops

Chaos.

No word can better describe the add/drop system here at Eastern. While students wait in incredibly long lines, literally for hours, professors across campus have already begun teaching the very classes those students are scrambling to get into - or out of.

There has got to be a better way. And there probably is. But until Eastern administrators take action and change Eastern's add/drop system, hopefully for the better, students will have to put up with the present one.

Editorial

And although Eastern students may regard this system as prehistoric, students at other Illinois universities (Illinois State, Western, and the University of Illinois at Urbana-Champaign) must also encounter similar frustrations.

However, there may be hope in sight for Eastern.

In August, Director of Registration Michael Taylor said the university is researching a system that would enable students to preregister for classes from a touch-tone telephone.

Under this system, instead of students going through registration, they would go to their advisers, fill out a worksheet and enter their classes through the telephone. At that very moment, students would know whether or not their classes have been confirmed.

Therefore, the computerized system would totally eliminate the need for central registration and add/drops. Instead of students waiting in lines for hours upon hours to get the classes they need, it could all be taken care of in less than five minutes.

The elimination of central registration and add/drops would also enable students to spend their first week of classes in the classroom instead of miserably long lines outside of the University Ballroom.

But it's not that easy.

The new computer system Eastern officials are researching costs money - about \$85,000. And money is something that higher educational institutions across the nation have been running short of lately.

Even the possibility of a new computer system for add/drops is refreshing for students. Finally, there is something that will help students instead of hindering them.

Quote of the day...

“Men do all things for an end, namely, for that which is useful to them, and which they seek.”

Benedict Spinoza

What really happened in 1988?

Well, it's the start of a fresh year (actually, it's about 13 days old, but bear with me this is the first chance I've had to write a column). And although you probably thought that Ronald Reagan's farewell speech pretty well summed up 1988 he missed a few points.

Since mid-terms are still several weeks away, and the only academic worry we have is how on earth we're going to weasel an excuse out of the health service the Monday after the Super Bowl, I thought I'd get the ball rolling with a little quiz.

Ready? Put your thinking caps on and whip out those #2 pencils.

1. During 1988, tuition at Eastern and other state universities

a) plummeted to an all-time low.
b) paid for new books and computer equipment for all classrooms and helped start a new trend in education - a trend that placed education before the White Sox.
c) jumped yet another \$120.

2. Just one day prior to the announcement that Eastern's tuition would once again be hiked

a) Eastern students scheduled a protest on the front lawn of Old Main.
b) Page One Tavern offered free beer to all students receiving no financial aid.
c) Eastern students stood up and cheered for Dan Quayle's endorsement of the "education president" and Jim Thompson, the "education governor."

3. As a follow-up performance to last year's Parent's Weekend mix-ups, the University Board

a) sold out Lantz Gym for a Four Tops show that went off without a hitch.
b) performed a song and dance number with Concert Committee Chair Trevor Brown on lead vocals.
c) handed out programs describing the Four Tops show and then yelled "Psyche!" when they brought



Amy Carr before

out the Commodores for the real show.

4. When Athletic Director R.C. Johnson said he needed an athletic fee increase because he hadn't had one in four years

a) a group of more than 100 students kidnapped Eastern's top athletes and burned their athletic jackets on the South Quad.

b) a group of student senators took R.C. to lunch and promised their support as long as they could get snappy jackets with the words "CLUB SENATE" prominently displayed on the back.

c) the two or three students who did vote in the fall elections were distracted by members of the Pink Panthers performing around the polling places and checked a resounding "yes" to the request.

5. After students voted in favor of the athletic fee increase, R.C. Johnson

a) said, "Ha! I was only kidding. We don't need an increase, I mean I really didn't think you guys would go for it. But, hey since I'm such a hip guy, we'll take the money anyway."

b) recruited the top 10 high school athletes in the country for next year's teams.

c) took a job at University of Miami at Ohio.

I could go on, but I wouldn't want anyone to strain their brain trying to remember what we did in 1988. Let's see how you did.

Disoriented - If you answered A or B to any of the above questions you were either dreaming, drinking or in another state during most of '88.

Clueless - If you grinned and thought to yourself, "Oh yeah, I remember when we did that, boy did we hit that one right on the nose" while you were checking letter C, you should count on history repeating itself in 1989.

Frustrated - If your pencil penetrated the paper while you marked C in a fit of rage, there may be hope for you yet. But, don't just sit in your dorm or apartment and wait for the next quiz, there's still time to convert some of those who may have failed this challenging little test.

- Amy Carr is editor in chief and a regular columnist for The Daily Eastern News.

CENTRAL REGISTRATION

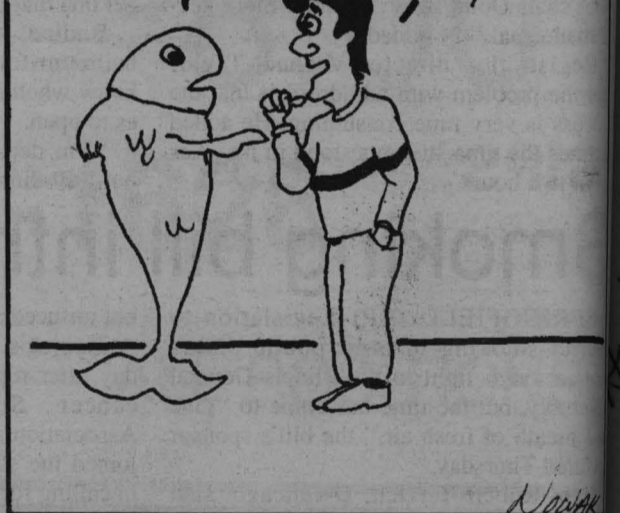
I COULDN'T BELIEVE IT! IN AND OUT OF CENTRAL REGISTRATION IN 20 MINUTES - ALL THE CLASSES I WANTED - THEN REALIZE I USED MY FAKE I.D.



... MEANWHILE IN ADD/DROPS

UNION BALLROOM

EXCUSE ME IS THIS THE SOUVENEER FALKING PLANT?



Your turn

Questions were asked by Jeff Madsen. Photos were taken by Ken Trevarthan.

How can add/drops run smoother?

Suzanne Heyd
Freshman
Undecided

"I think the order (Social Security number system) should have been a little more organized. It was unfair that some people had to wait while the rest were processed through."



John Juba
Psychology
Junior

"I think the Social Security system is dumb because some people need a class and they can't get there because they're waiting in line."



Kathy McNeely
Accounting
Junior

"I think they should have it computerized as soon as possible. This is absurd. This is my sixth semester and my first bad experience with add/drops."



Rochelle Romer
Fashion merchandising
Sophomore

"Instead of having everyone wait in line, they should have a first-come-first-serve system. I'm missing my classes because I've been waiting in line here for two hours."



Mr. and Ms. EIU to be chosen at body-building competition

By KEN TREVARTHAN
Staff writer

Eastern is starting a new tradition with the second Mr. and Ms. Eastern Illinois University body-building contest.

The contest, which will be held April 15, in McAfee Gym, was started in 1988. Darrell Latch, the owner of the Son Light Total Fitness Center, 400 Sixth St., said he "wanted to give people here an opportunity to compete."

He added that he started the contest so people could "feel good about themselves and accomplish something they have never accomplished before."

The event is sponsored by Latch, who said he will award trophies to the overall best male as Mr. EIU and to the overall best female as Ms. EIU. There will also be trophies given to all contestants as they place.

Last year, out of 20 contestants, only 3 were women. "I hope that this year will have more women," Latch said.

One of the women that will be in the competition this year, junior Jan Brading, said she was "kind of nervous" to be participating in the contest. "I started lifting weights to get into shape, and then I got addicted," Brading said.

Another contestant, graduate student Derek Johnson, is participating for the second time. He placed first in the light-heavyweight class last year. He said he "gets a sense of achievement" from the competition. "This is about the only chance for guys who just do it (body building) for fun to compete," Johnson said.

Latch said the contest is made up of three parts, the mandatory poses, the individual pose routines and the final pose down,

which is repeated for each weight class.

During the mandatory poses, all the contestants in the weight class, lightweight, middleweight, light-heavyweight or heavyweight, being judged come out on the stage and pose.

The individual posing section involves each contestant posing individually. In the third part all of the contestants come out for the final posedown.

Each weight class is judged separately and the judges choose Mr. and Ms. EIU, who are the overall best in the competition.

The remaining contestants earn placings within their weight class.

Details about the contest will be posted at Lantz Gym and at various gyms around Charleston next week. Applications will be available at the Son Light Total Fitness Center sometime next week.

New senate positions named

By CATHY PODWOJSKI
Government editor

The new committee chairs and members for the Student Senate committees were announced for the spring semester at the senate meeting Wednesday.

Senate members Tom Green and Brian Moushon were appointed as chairs to the academic affairs committee by Senate Speaker Jane Clark. Senate member Martha Price was appointed to the elections committee while senate member Paul Norkett was appointed to the student awareness committee.

Senate members Jennifer Baldrige and Bill Golden will co-chair the university relations committee and the student leg-

islative committee will be chaired by senate member Lisa Farrell. The housing committee will be chaired by senate members Roger Thomson and Bob Valencic.

The executive officers also gave their reports along with a description of their jobs for the new senate members.

The senate also approved the resignation of senate member Carrie Curtis. Clark said Curtis informed her in a letter she will not attend Eastern this semester.

Clark said petitions will be available Monday for the four open seats on senate. In addition to the seat Curtis left in the residence hall district, seats open are an at-large spot which Jane Clark held before she was re-elected to the speaker position and a seat in

the off campus district formerly occupied by Tim Butler, who resigned late in the fall semester. The last seat was vacated when Rich Bierman of the off campus district resigned.

A bylaw change submitted by senate member Roger Thomson during the fall semester was also approved. The change requires all new senate members to attend a senate meeting and committee meeting following the fall elections to familiarize themselves with senate.

"I think it's a good way to get your feet wet before you get actual voting rights," Thomson said.

Secretary Monica McAdams was also unanimously approved to again serve as secretary for the senate.

CIPS: Various reasons delay opening

By CHARLA BRAÜTIGAM
Staff writer

Absence of power is only one reason Villa Apartments did not open on schedule, said Norm Spear, District Superintendent of Central Illinois Public Service, CIPS.

Spear said Thursday he believes the owners of Villa Apartments, Unique Homes, 1414 Sixth St., made CIPS out to be "the culprit" by claiming CIPS was too busy completing Eastern's Greek Court to work on the apartments.

"The site is not totally ready for occupancy ... and it's just not because of CIPS," Spear said.

"All the rules and regulations

have not been met."

Some of the rules and regulations Villa Apartments, located on Sixth Street, has not met include: an occupancy permit, fire code approval, and electrical meters must be green tagged showing approval of their location for each apartment, Spear said.

Villa Apartments failed to open on its targeted completion date of Jan. 1 leaving three Eastern students homeless.

Spear explained that even if the apartments did have power, people would still not be able to move in due to all the regulations that must be met.

Chuck Faw, general manager of Unique Homes, said CIPS told them a month ago it would be

rough getting in there on time to complete their part due to being backlogged.

Faw said he thought he would still be able to move students in on time by operating the apartments on temporary power.

However, on Jan. 5, CIPS told Faw they could not run on temporary power because it was illegal.

Spear explained temporary power service does not have the adequate amount of amps to take care of the job.

Faw said power meters were not installed on the back of the building until Tuesday because they saw no reason to work around the clock if they were not going to have power anyway.

GateWay

LIQUORS

East Side

PACKAGE

"From A Keg To A Can"

Sale prices good thru Sunday.



JIM BEAM
750 ml
5.49



TEACHER'S SCOTCH
750 ml
7.99



BACARDI RUM
LIGHT OR AMBER
750 ml
5.99



CANADIAN CLUB
750 ml
7.49



LIQUORE AMARETTO
750 ml
3.99



SEMKOV VODKA
1.5 Liter
7.89



TANQUERAY GIN
750 ml
8.99



JACQUES BONET CHAMPAGNES
750 ml
1.69



SEAGRAM'S WINE COOLERS
4 Pack
2.69



CHILLED SABASTIANI WHITE ZINFANDEL
750 ml
3.69




MILLER, LITE & GENUINE DRAFT
24 CAN SUITCASE
8.89




NATURAL LIGHT
12 CANS
3.69



ICE COLD
ICE 70¢



PANTHER BASKETBALL



EIU vs. Northern Iowa

LANTZ Gym...SAT. NIGHT...7:30

Marathon Oil Night

Give aways at the Game...DON'T MISS IT!

Keep your parents up on what's going on at EIU through a **Daily Eastern News** Subscription
Call 581-2812

Dave's Memory Lane 345-7312
Italian Restaurant



New 1/2 Gal. Buckets of Spaghetti
Tomato Sauce...\$3.99 Meat Sauce.....\$4.99
Garlic Bread full loaf.....\$2.00
Half loaf.....\$1.00

Carry out or Delivery
Thursday's Special

Italian Sausage Sand. w/ Fries & Reg. Drink	Lasagna Dinner Salad & Garlic Bread
\$2.50	\$3.95

5 pm - 9 pm

Late Night Specials 9 pm - 1 am

Class assignment Question:
Where should Eastern Students Go To Find Friendly, Affordable Living At A Great Location?

This is all you need to apply for the Card.



With Automatic Approval, it's easier to qualify while you're still in school.

Now getting the Card is easier than ever. For the very first time, students can apply for the American Express® Card *over the phone*.

Simply call 1-800-942-AMEX. We'll take your application by phone and begin to process it right away. It couldn't be easier.



What's more, because you attend this school full time, you can also take advantage of the Automatic Approval Offer for students. With this offer, you can get the American Express Card right now—without a full-time job or a credit history. But if you have a credit history, it must be unblemished.

It's actually easier for you to qualify for the Card now, while you're still a student, than it ever will be again.

Become a Cardmember. Fly Northwest \$99 roundtrip.

As a student Cardmember you will be able to enjoy an extraordinary travel privilege: fly twice for only \$99 roundtrip to any of the more than 180 Northwest Airlines cities in the 48 contiguous United States (only one ticket may be used per six-month period).*

And, of course, you'll also enjoy all the other exceptional benefits and personal service you would expect from American Express.

Apply now by calling 1-800-942-AMEX. And then you can really go places—for less.



Apply Now: 1-800-942-AMEX



*Some restrictions may apply. For complete offer details, call 1-800-942-AMEX. Current student Cardmembers automatically receive two \$99 travel vouchers in the mail.

Doudna scholarship awarded to freshman

Freshman music education major Michael Gagliardo was recently presented the first "President Doudna Memorial Scholarship."

The \$500 scholarship is presented in memory of former Eastern president Quincy V. Doudna.

The award was presented by Winifred Doudna, the wife of the late president Doudna. "I was very happy to get it," Gagliardo

said. The scholarship is presented to a freshman in recognition of outstanding academic work while the student was in high school, and potential as an Eastern student.

"I'm in the university honors program and Dr. Lasky (honors director) told me about the scholarship," Gagliardo said, "and they more or less selected me."

Outstanding freshman are selected for the honor, said Art

Tate, assistant director of University Relations. "No one applies for it as such," Gagliardo added.

Gagliardo said he was active at Alton Senior High School and "here (at Eastern) I'm in the marching band and community orchestra."

The freshman selected is meant to embody the qualities Quincy Doudna embraced. The scholarship is non-renewable.

College supplies welders

BELLEVILLE, Ill. (AP)—Light those gas torches and grab those protective masks.

Welders are in such demand that Southern Illinois companies are turning to Belleville Area College for the skilled blue-collar workers.

"We're getting more calls for welders than we have students ready to send out," said Garner Kimbrell, coordinator of the

school's welding program. "The job market is just climbing and climbing."

Some students are quitting the program to take jobs before receiving their certificates, Kimbrell said Wednesday.

The pay is very attractive. Starting salary for welders generally ranges between \$7 and \$18 per hour with the average between \$9 and \$13, Kimbrell

said. One student who graduated six years ago is earning about \$50,000 a year after, he said.

Kimbrell said he has 16 requests for welders, but he won't be able to fill most of the positions until graduation in May.

About 150 students are enrolled in the school's welding program, which turns out about 40 graduates annually, Kimbrell said.

CAMPUS INTERVIEWS

- JANUARY 17 - KELLY SERVICES (TELEMARKETING - CRT:** Bus. Major- finance or Marketing; Mattoon/Charleston; Citizenship Req.; to be working on various telemarketing programs specializing in financial packages.)
- JANUARY 24 - MARKETING & MANAGEMENT CORP. OF AMERICA (MARKETING REP.:** Any major : may or Aug Grads: IL; 62 yr. old multi-million dollar corp. Seeking individuals to represent affordable tax deferred systematic methods for accumulating money. No exp. req., company provides complete training exp. with sales plus.)
- January 25 - THE ALLENDALE ASSOCIATION: (Psychology Therapist - Sociology Therapist - Social Worker - Recreation Specialist - Special Education Teachers: May & Aug. Grads.)**
- JANUARY 25 - STATE OF CALIFORNIA - STATE BOARD OF EQUALIZATION: (Auditor: Acctg. Major; 50% Travel within Midwest; Chicago, IL; May Grads.; Citizenship Req.)**
- February 1 - PRAIRIE SUPER STORES (Management Trainee:** Any Major; Doing business as Cub Stores; Entry level position. Trainee is assigned to various store departments & performs the basic level tasks in that dept. As proficiency increases, trainee is introduced to various managerial duties - scheduling, ordering, supervision. This is a 12 to 18 month program which allows trainee to learn Cub Foods' "New Way to Run a Supermarket" in an efficient yet thorough manner.; May & Aug Grads.; Melrose Park, Lombard and Arlington Hgts.)
- FEBRUARY - FRANKLIN LIFE INSURANCE COMPANY (Closed Schedule)**
- FEBRUARY 7 - ILLINOIS FARM BUREAU (Accounting - Comp. Mgmt: Overall GPA 3.0 + ; May Grads. only)**
- FEBRUARY 7 - STATE FARM INSURANCE COMPANY (Accounting - Data Processing: 3.0 GPA; May & Aug. Grads.)**
- FEBRUARY 9 - A.L. WILLIAMS**
- FEBRUARY 15 - CATERPILLAR INC. (Comp. Mgmt. - Accounting: 2.8 or above GPA; Peoria, IL; May Grads.; Citizenship or aliens currently authorized to work in the U.S.)**
- FEBRUARY 16 - AUTOMATIC DATA PROCESSING (Sales Trainee:** Any Major interested in Sales; May Grads.; Chicago Metro Area)
- FEBRUARY 16 - FOOT LOCKER (Mgmt. Trainee: Mktg., Mgmt., Econ., Speech comm., AIS; May & Aug. Grads.; Central & Downstate IL & St. Louis, MO; Citizenship Req.)**
- FEBRUARY 16 - K-MART APPAREL (Mgmt. Trainee: Any Major interested Retail Sales; 2.5 GPA overall; Citizenship Req.; May & Aug Grads)**
- FEBRUARY 16 - MCDONNELL DOUGLAS CORP. (Int. Tech: St. Louis, MO; May Grads.; Citizenship Req.; Transcripts Req. for campus interview)**
- FEBRUARY 16 - LADY FOOT LOCKER (Mgmt. Trainee: Any Major; May & Aug. Grads.; IL & St. Louis, MO; Citizenship Req.)**
- FEBRUARY 21 - NORTHWESTERN MUTUAL - Career Seminar: Monday, February 20 - 7:pm - Shelbyville Room.**
- FEBRUARY 23 - FOOT LOCKER (Mgmt. Trainee: Mgmt., Econ., Mktg., Speech Comm., AIS; Citizenship Req., May and August Grads.)**
- FEBRUARY 24 - HILLS DEPARTMENT STORES (Management Trainee: Any Non-Technical Major; 1 yr. training program leading to positions of Oper. Mgr., Softlines Mgr. or Hardlines Mgr. Responsible for 30-60 people. Growth potential for in-store & office positions.; Loss Prevention Manager Trainee: Any Non-Technical Major; 35-week training program leading to Loss Prevention Manager. Responsibilities include internal/external investigations, check collections, safety programs, auditing of operations, employee supervision & counseling, & general store mgmt. Growth potential for in-store & office positions. AL, GA, IL, IN, KY, MD, MA, MI, NY, OH, PA, TN, VA, WV; May Grads. & Alumni.)**

INTERNSHIP

- JANUARY 19 - STATE FARM INS. CO. (Computer Mgmt. Interns:** Bloomington Office; 10 Weeks - 5/15 to 8/1; \$1200 per month; Sr. standing by Summer 1989; 3.2 min. overall grade point & in computer science courses; 6-9 hrs. min. in ACS courses, at least 3 hrs. in Cobol or PL.1 programming courses; Majors = ACS, Comp. Math or Bus.; Citizenship Req.)
- FEBRUARY 2 - GRAD. PUB. SERV INTERNSHIP - SANGAMON STATE UNIVERSITY (Internship: Interns placed in ll state government.; Stipend, tuition waiver & modes travel allowance provided. 21 month program pursuing MS at SSU. 25 to 35 positions available within government, located in Springfield. All Major accepted. May & Aug Grads. & Alumni)**

SUMMER JOBS

- FEBRUARY 17 - ANDERSON WESTERN COLORADO CAMPS (Counselors, Nurses - Cooks - Wranglers - Riding Instructors - Dishwashers - Maintenance People: Description of the positions are available in the placement Center; Sophomore or above)**

CAREER SEMINARS

- ALL STUDENTS - ALL MAJORS WELCOME**
- FEBRUARY 20 - NORTHWESTERN MUTUAL - 7:00 p.m. - Shelbyville Room - University Union**

For More Information, Contact the Career Planning & Placement Center SSB Rm. 13 - 581-2411





20% OFF

with Student I.D.
Used furniture
Used Clothing ave. price \$1

West Route 316 348-1041

J.T. Pschirrer
D.D.S.
1625 18th Street
Charleston
Accepting EIU
Dental Insurance
Call 345-5124

Dorm Refrigerators
RENTAL SPECIAL



Only \$19 rent till May
FREE DELIVERY
ICE BOXER 1-800-888-3744
345-7083

TONIGHT AT
THIRSTY'S
\$2.00
PITCHERS

- Live D.J.'s
 - Shooter bar
 - 6 Pool Tables
 - New Pool Room Bar
 - Lots of Fun
- Across from Post Office

Make a friend *smile!*
Buy a classified from
The Daily Eastern News

**I KNOW IT'S
LINCOLNWOOD/
PINETREE
APARTMENTS**



DO YOUR HOMEWORK!
Call us Today
For More Info.
345-6000
Or Stop by
2219 S. 9th St. #17
Mon-Fri 9-5 PM
Sat 10-4 PM

**BRING IN THE COUPON --
TAKE HOME OUR SPECIAL**
7 Days Per Week

PIZZA

Original Thin Crust
Large Sausage & Cheese

Only \$5.95

(plus tax)

Also Available With A 2-Liter Bottle of Pepsi for Just \$1.35 More
Pan Pizza \$1.00 Extra



Charleston

348-7515

Offer Expires 1/31/89

Offer Good With Carry-Out Orders Only

FREE DELIVERY AFTER 5 P.M.

Classified ads

Report errors immediately at 581-2812. Correct ad will appear in the next edition. Unless notified, we cannot be responsible for an incorrect ad after its first insertion. Deadline 2 p.m. previous day.

8A January 13, 1989

Services Offered

"My Secretary" Professional resumes, papers, letters, etc. 903 18th. 345-1150. 9 a.m. to 5 p.m. 5/5

Help Wanted

Full-time bartender Monday through Friday, Part-time full-menu cook. Salary negotiable w/experience. Apply after 2 p.m. Charleston Elks, 720 6th St. 1/17

DO YOU LOVE CHILDREN? Need a change? Experience the challenge! Become a One On One, Live-in Nanny. Your natural ability to care for and nurture young children is highly sought after by quality Boston area families. Immediate openings in beautiful North Shore Boston communities. 12 mo. Commitment-Most active Nanny Network in the Northeast - Exciting Outings. (508) 794-2035. One On One, Inc., 10 Berkeley Lane, Andover, Ma. 01810. ca-1/11, 18; 2/1, 15; 3/1

Immediate delivery position available. Must be 18 yrs. old. Apply in person. Monical's Pizza. 909 18th Street. NO PHONE CALLS PLEASE. 1/18

Babysitter needed. M-F 3:00-11:00. My home. Children ages 5-2 1/2 - 3 mo. Phone before 2:00 345-6967, after 5:00 581-5627. 1/13

House keeper/Hab. aide to work midnight to 8 a.m. Sun thru Thurs. Tull House; 1911 18th 345-3552. 1/18

DAVE'S MEMORY LANE RESTAURANT. WAITRESSES WANTED. EXPERIENCE PREFERRED. APPLY IN PERSON 3 TO 5 PM. 1/18

WANTED: BASS PLAYER for working Rock Band. Call Joe-3662 or Mike- 2561. 1/17

Adoption

Happily married, financially secure couple eager to adopt/ Full-time mom, dedicated father can provide warm, loving, happy home and lifetime of caring for your baby. Expenses paid, confidential. Call Sarah collect (312) 743-6440. 1/19

Roommates

ROOMMATES NEEDED IN SPACIOUS 3 BEDROOM HOUSE - CLOSE TO CAMPUS. 150 - 200 MO. 345-4798 OR 345-7535 (ASK FOR TIM) 1/13

Roommate Needed to share 2 bedroom University Apartment. Male. 108.5/mo. Ph: 581-2629 or come to Univ. Apts. #31. 1/17

Subleaser needed immed., \$150 month, heat and water incl., own room, no deposit needed. 345-6694 1/17

For Rent

SPRING SEMESTER AVAILABLE 2 BEDROOM APARTMENTS. APARTMENT RENTALS 820 LINCOLN STREET. 348-7746. 5/5

RENT A MICROWAVE OR DORM SIZE REFRIGERATOR. PHONE 348-7746. 5/5

FOR RENT: Stop by: Regency Apartments leasing for second semester, close to campus, phone 345-9105. 1/13

Rooms for women 1415 7th St. 6th house from campus. 345-3845 \$165 or \$110 with most utilities. 0/0

Clean, furnished efficiency apartment w/cable hookup. \$200 includes HEAT, water, garbage, parking. Available ASAP. 345-9549. 1/19

For Rent

Need 2 or 3 females for two furnished apartments near Campus. All utilities paid. 345-4243. 0/0

SUBLEASER WANTED FOR SPRING '89. PRIVATE APT. FOR ONE. ALL UTILITIES INCLUDED CALL 348-1746. 1/12

ONE BEDROOM APARTMENT WITH GARAGE. CLOSE TO CAMPUS. 348-1645 OR 581-3520. 1/13

Quiet three room furnished apartment. Utilities paid. Call 345-4336. 1/24

2 non-smoking males for apt. near south campus. \$150 ea. + share utilities. 345-3771. 0/0

GUYS, FOR RENT IMMEDIATELY LARGE TOWNHOUSE. OWN BEDROOM. PRIVATE PARKING. CHEAP UTILITIES. RENT NEG. CALL DEBBIE 348-8643. 1/13

Nice 1,2, and 3 bedroom furnished houses for 1989-90 school year. Two people per bedroom. 10 month lease. \$160/mo. Call 345-3148 evenings. 0/0

Female Subleaser need, IMMEDIATELY. Own room, close to campus. Rent Negotiable. Call 345-3868 or 309-686-0955. ca1/11, 1/13, 1/16

For Rent

1 br apt. 3 blocks from campus. Phone 345-3657 after 5:00. 1/13

One bedroom apartment, furnished. Utilities included \$165. 345-2171 between 9 and 11 a.m. 1/13

Need Guy Roommate: you get your own room. 911 Harrison. Partying Chicks upstairs! 90 Bucks, what a deal! Was \$110. 348-5382. Ask for Bill. 1/13

Subleaser Needed \$150. total per month including utilities. Fully furnished. Call 345-9322. 1/12

WANTED MALE SUBLEASER. FOR THIS SEMESTER. PLEASE CONTACT 345-2374. 1/16

SUBLEASER spring semester, house near campus. January free 345-2416 1/20

Desperate!!! Needed: 1 subleaser (female). Furnished house, 2 blocks from campus. Own bedroom. Contact Racquel at 345-6077. 1/17

Serious non-smoking male wanted to share expenses at 127 Polk. Own room. 345-1160/348-5166. 1/17

Room with private bath, entrance, furnished utilities & cable included. Car needed. \$150.00/mo. 348-5871 1/13

For Rent

Spacious 2 Bedroom Apartment 818 7th. Utilities Paid 345-2783. 1/26

Female. Private room/in home utilities included. \$150.00/mo. located in Heritage Woods, Charleston, cooking privileges. For info. call 348-8044 or 581-2523. 1/13

Male subleaser needed Brittany Ridge Apts., \$145 a month & utilities. 345-1552 Ask for Dave. 1/17

Three, Four, & Five- bedroom houses for fall, 1 block from campus. Call 345-6621 or 348-8349. 0/0

Female Subleaser Needed Spring and/or Summer. Own Room. Furnished. \$145. Call Kelley at 345-3052 after 5:30. 1/20

For Rent: 1 br. apartment, All utilities paid, \$250 mo., 905 c. St.. Phone: 348-0764. 1/18


One month free rent! Subleaser needed for immediate occupancy. Four female roommates. Own room. Close to campus. Call 345-1069 or 348-7680. 1/18

For Rent

Needed!! Subleaser for 3 bedroom apartment. Park Place. Call Matt 581-5805 or Park Place Apts. 1/20

Looking for a place to live next semester? Advertise for a roommate or a place to rent in The Daily Eastern News Classified ads. Do it Today! 0/0

EIU MEN'S BASKETBALL



EIU VS. Northern Iowa Sat. 7:30 Lantz Gym MARATHON OIL NIGHT Don't Miss IT!

The Early Bird selects Charleston's finest apartments. . .

Youngstown Apts ? ? ? Heritage Apts
Cambridge & Nantucket St. Old Towne Apts



Call to See 345-2363 345-2520 Hours 1,2,3, & 4 Bdrms. 916 Woodlawn M-F 9-6 Sat. 10-3

Regency Apts. STOP 'N CALL 345-9105 Don't be left Homeless for 1989/1990

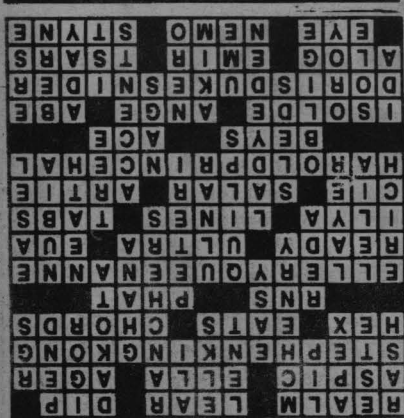
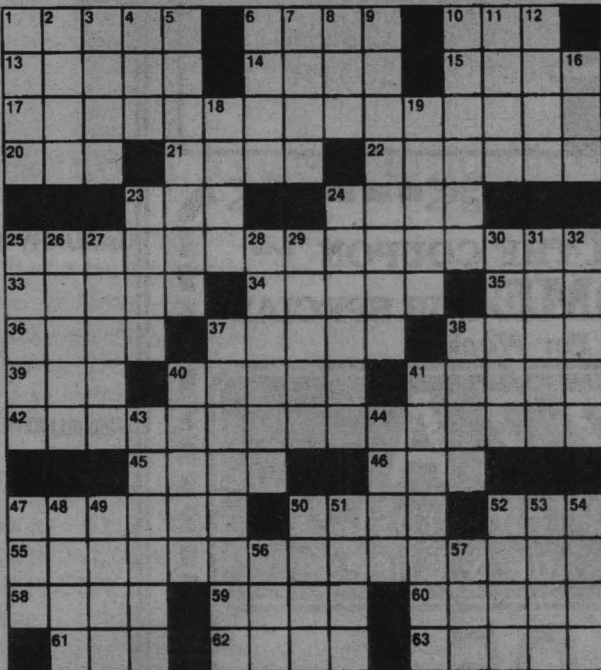
Crossword Puzzle

ACROSS

- 1 Kingdom
- 6 Tragic monarch
- 10 Short swim
- 13 Cold meat-juice jelly
- 14 Actress Raines
- 15 "Ain't She Sweet?" composer
- 17 Author chained to ape
- 20 Endora's spell
- 21 Gormandizes
- 22 Keyboard combinations
- 23 Hosp. group
- 24 Easily composed, in typesetting
- 25 Mystery writer wedded to royalty
- 33 Prepared
- 34 Extreme
- 35 U.S.A., Gallic style
- 36 Author Ehrenburg
- 37 Cruise-ship companies
- 38 Bar bills
- 39 Fr. company
- 40 Turkestani Moslem
- 41 Bandleader Shaw
- 42 Broadway producer linked to Falstaff's friend

DOWN

- 45 Ottoman governors of yore
- 46 King topper
- 47 Tristan's love
- 50 Cherbourg cherub
- 52 Presidential nickname
- 55 Tobacco heiress linked to Dodger immortal
- 58 Sleep like
- 59 Arab potentate
- 60 Former rulers
- 61 Watch
- 62 Verne's skipper
- 63 "Gypsy" composer
- 1 Madcap
- 2 Alberto Azzo II, e.g.
- 3 Culmination
- 4 Back talk
- 5 Fort in Baltimore's harbor
- 6 Fast time
- 7 Wapitis
- 8 Caliph or pugilist
- 9 Cattlemen
- 10 Territory: 1861-89
- 11 Operatic prince
- 12 Hang fire
- 16 Some coll. linemen
- 18 Captain of comics



- 19 Land once headed by Nkrumah
- 23 Hester Prynne's stigma
- 24 "The Great" czar
- 25 Composer-conductor Korngold
- 26 George Sand heroine
- 27 Hen
- 28 Dickensian dwarf and wife
- 29 Of a forearm bone
- 30 Below. to Byron
- 31 Knitted scarf
- 32 Item for Inness
- 37 Earl of Avon's wife
- 38 Kingwood, e.g.
- 40 Luges
- 41 Certain stresses
- 43 Noblesse
- 44 Henpecks
- 47 G. & S. princess
- 48 Flatfish
- 49 "Plata" (Mont.'s motto)
- 50 Tamiroff of films
- 51 Fiddling emperor
- 52 "An apple
- 53 A European capital
- 54 Highlands dialect
- 56 Japanese apricot
- 57 Royal finish

The Daily Eastern News Classified Ad Form

Name: _____
 Address: _____
 Phone: _____ Students Yes No
 Dates to run _____

Ad to read:

Under Classification of: _____
 Expiration code (office use only) _____
 Person accepting ad _____ Compositor _____
 no. words/days _____ Amount due:\$ _____
 Payment: Cash Check Credit
 Check number _____

20 cents per word first day ad runs. 14 cents per word each consecutive day thereafter. Students with valid ID 15 cents per word first day. 10 cents per word each consecutive day. 15 word minimum. Student ads must be paid in advance. The News reserves the right to edit or refuse ads considered libelous or in bad taste.

Official Notices

Official notices are paid for through the Office of University Relations. Questions concerning notices should be directed to that office.

I.G.L. Checks
Participants in the Illinois Guaranteed Loan Program may pick up their Spring 1989 IGL checks beginning January 11, 1989 from 8:00 a.m. to 3:30 p.m. at the Cashier's Office located in the back of Old Main. To pick up your IGL check, you must present your EIU ID card that is: 1. Validated for Spring 1989 Semester. 2. In good condition.

OR 1. Valid driver's license. 2. Paid fee card for Spring 89. Linda Coffey Assistant Bursar

Financial Aid Applications
Applications are now available for 89-90 school year. Any student wishing to apply for any Financial Aid Programs for 1989-90 should obtain one of the Financial Aid Packets. First consideration cutoff

for completed Financial Aid Applications is April 14, 1989. The following programs are affected by this date: Perkins Loan, College Work Study, Supplemental Grant Program, Socio Economically Disadvantaged Student Scholarship. ISSC's cutoff date for full year coverage for sophomores and above is June 1, 1989.

John Flynn
Director Financial Aid

Examinations Schedule
Spring 1989
Register for these exams at the booth in the Union Bookstore Lounge; bring your picture ID and fee. (Go to Testing Services for information about other exams.)
*Regular registration for the Writing Competency Examination

Exam	Date	Registration Deadline	Fee
Constitution	February 16* March 16 April 13	February 9 March 10 April 7	\$2 for retakes
Health Comp.	April 11	April 4	\$2
Writing Comp.	February 21 April 6	February 7* March 17*	\$10

*Afternoon and evening testing

closes as soon as the 544 available seats are taken. David K. Dodd
Con't on page 10A

Friday's

Classified ads

Report errors immediately at 581-2812. Corrected ad will appear in the next edition. Unless notified we cannot be responsible for an incorrect ad after its first insertion. Deadline 2 p.m. previous day.

For Sale	Lost/Found	Announcements	Announcements	Announcements	Announcements
<p>GOVERNMENT SEIZED Vehicles from \$100. Fords. Mercedes. Corvettes. Chevys. Surplus. Buyers Guide. (1) 805-687-6000 Ext. S-9997.</p> <p>2/20 GOVERNMENT SEIZED Vehicles from \$100. Fords. Mercedes. Corvettes. Chevys. Surplus. Buyers Guide. (1) 805-687-6000 Ext. S-9997.</p> <p>2/8 Study guide for Psy. 2310. Call 5723 and ask for Michael, or leave message.</p> <p>1/18 ALVAREZ YAIRI CLASSICAL GUITAR, CUTAWAY W/ PICKUP, VG CONDITION. \$700 NEW, \$350 OBO (MUST SEE!) MIKE 581-2561.</p> <p>1/18 For Sale: LOTUS 123 Student Edition manual and disks for use with most DAP and BED classes. \$30 Call Jenny 348-8829.</p> <p>1/13</p>	<p>Reward!! Opal pendant sentimental. Call 581-3152.</p> <p>1/13 Found: Ladies Watch near coleman Hall. Identify to claim at Daily Eastern News Office.</p> <p>1/18 Brown leather jacket taken. Easily identified. Return- no questions asked. Otherwise, owner will prosecute. Call 581-2747.</p> <p>1/18 lost keys, keychain has "I love Florida" with picture of "Miami Vice" star- Tubbs, If found call 345-1685.</p> <p>1/18</p>	<p>"UNDER THE BIG TOP" Union Open House Jan. 18. GREAT ENTERTAINMENT and FOOD SPECIALS!! Look for further details.</p> <p>1/17 "Just Spences" 1148 6th: Vintage, 50's, 60's & current style clothing. Tues-Sat 1-6 home 345-1469.</p> <p>1/13 Friday and Saturday: "HOT SET-UP" - \$1.50 Pitchers, 75c Well Drinks. \$1.00 cover. My Place Lounge.</p> <p>1/13 LADIES NIGHT!! FRIDAY NIGHT!! \$2.00 COVER FROM 9-10 P.M. ALL YOU CAN DRINK! TOP OF PAGE ONE TAVERN!</p> <p>1/13 T.G.I.F. WELCOMES E.I.U. STUDENTS BAKC TO SCHOOL WITH LADIES NIGHT, \$2.00 COVER FROM 9-10 ALL YOU CAN DRINK. GUYS \$3.50 ALL NIGHT. TOP OF PAGE ONE TAVERN.</p> <p>1/13</p>	<p>T.G.I.F. IS BACK. LADIES NIGHT!! \$2.00 COVER FROM 9-10 FRIDAY NIGHT. ALL YOU CAN DRINK. ON TOP OF PAGE ONE TAVERN!</p> <p>1/13 "LET'S PADRE" Catch Some Waves and Rays on the beach of St. Padre. Come Party This Spring Break. For info call Frank or Todd at 348-0381.</p> <p>1/13 Panellenic Council would like to Welcome Back all EIU students!</p> <p>1/13 JON MATTSON: Happy Friday the 13th! We hope our Sigma Man has a good day! Love, the Sig Kaps.</p> <p>1/18 KEG SERVICE IS BACK IN FULL SWING AT PAGE ONE TAVERN NEED. NEED A KEG? CALL KING OF KEGS, BOB NIELSEN AT 345-7416.</p> <p>1/13 Welcome back PHI SIGS! Let's have a great semester! Love, George.</p> <p>1/13</p>	<p>RUSH, RUSH, RUSH, with us! Sigma Nu Little Sisters. January 17th. For more information call: 345-3157 or 348-5182.</p> <p>1/13 Sigma Nu Little Sister Rush January 17th, 8:30-10:00 at 1515 9th St.</p> <p>1/13 The Student Edition of Lotus 1-2-3. Perfect condition. Only \$15.00. Call 345-9517.</p> <p>1/13 TED'S IS OPEN MONDAY. QUARTER SPECIALS. KATHY, MELISSA, MARIA & ALL OUR FRIENDS, SEE YOU!!!</p> <p>1/13 KEG SERVICE IS BACK IN FULL SWING AT PAGE ONE TAVERN. NEED A KEG? CALL KING O KEGS, BOB NIELSEN AT 345-7416.</p> <p>1/13 RUSH, RUSH, RUSH with us! Sigma Nu Little Sisters. January 17th. For more information call: 345-3157 or 348-5182.</p> <p>1/13</p>	<p>Mike, Happy Birthday! You are really getting old. I'll remember Monday night. Revenge is so sweet. Have an awesome B-day, neighbor. Love, The Bimbos in 1004</p> <p>1/13 TED'S IS OPEN MONDAY. QUARTER SPECIALS. SUE, LISA, SHAUNA & ALL OUR FRIENDS, SEE YOU!!!</p> <p>1/13 DON'T MISS THE 2 TOP ROCK BANDS FROM MABEL'S IN CHAMPAIGN. "SMOKEHOUSE" ON FRI & "CLOCK WORK ORANGE" ON SAT.</p> <p>1/13 Hey everybody! Wish me, Alec Messamore, a happy 23rd birthday.</p> <p>1/13 HAPPY BIRTHDAY JOANN! I hope you have a great day! You're a GREAT roommate! ENJOY. Love, your roomie, BJ</p> <p>1/13 MARCY REED, congratulations on your Wedding Engagement. It's about time. GOD</p> <p>1/13</p>

EIU MEN'S BASKETBALL

EIU VS. Northern Iowa Sat. 7:30 Lantz Gym MARATHON OIL NIGHT Don't Miss IT!

STUDENT APARTMENTS Available Now, Summer and Fall For 1,2 or 4 people APARTMENT RENTALS

Phone 348-7746

Let your parents keep upto date on campus subjects Buy them a subscription to *The Daily Eastern News*

Campus clips

Christian Campus Fellowship will hold a Sunday Morning Workshop on Jan. 15 at 10:30 at the Christian Campus House just behind Lawson Hall.

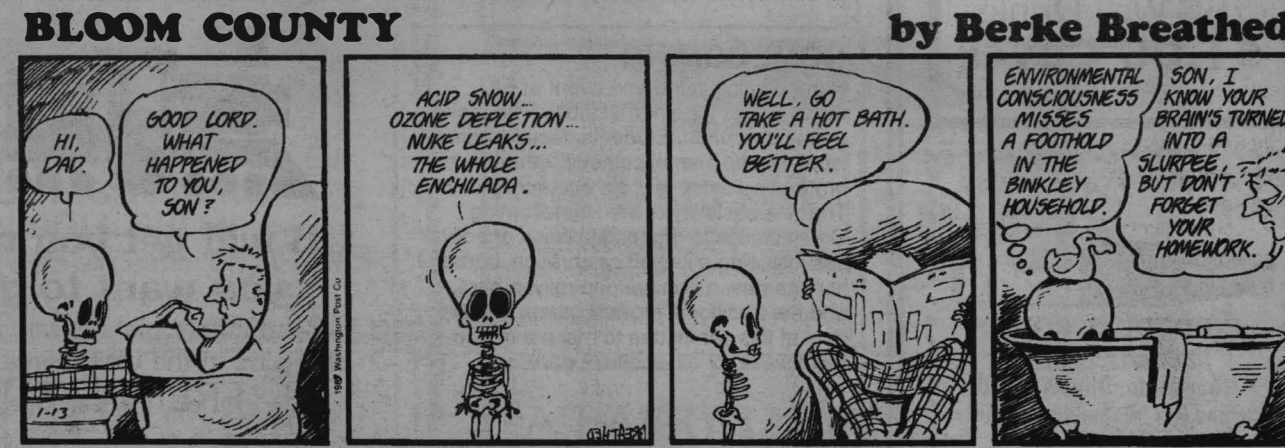
UNITY GOSPEL FELLOWSHIP. There will be no services for Unity Gospel choir or Fellowship this weekend. For transportation to service in Mattoon, call Maurice at 3758.

Newman Catholic Community will hold Saturday Night Movies Jan. 13 at 8:00 p.m. in the Newman Center at the corner of 9th St. and Lincoln. Movies shown will be "E.T." and "F/X". Also, free ice cream, chips and pop will be provided.

Navagators Christian Fellowship will hold a Fellowship Meeting Jan. 13 at 6:30 in the Charleston Room Union. All new people are welcome.

The Economic Department has a class opening Jan. 12. A NEW CLASS OPENING OF ECW 2801 HAS BEEN MADE. FORTY PLACES ARE AVAILABLE.

Campus Clips are published daily, free of charge, as a public service to the campus. Clips should be submitted to *The Daily Eastern News* office by noon one business day before date to be published (or date of event). Information should include event name of sponsoring organization, (spelled out no Greek-Letter abbreviations), date, time and place of event, plus any other pertinent information. Name and phone number of submitter must be included. Clips submitted after noon of deadline day cannot be guaranteed publication. No clips will be taken by phone. **Clips will be run one day only for any event.**



Official Notices

Official Notices are paid for by the Office of University Relations.
Questions concerning notices should be directed to that office.

Continued from 9 A

Writing Competency Examination Undergraduates:

To satisfy graduation requirements for the Bachelor's degree at Eastern Illinois University, you must pass the Writing Competency Examination. Register to take this examination after you have completed sixty semester hours (junior standing) and have credit for both English 1001 and 1002. Register in person from 11:00 to 3:00 Monday through Friday at the booth in the Union Bookstore Lounge; bring your EIU ID and \$10 for the fee. The first of two examinations this semester will be given on February 21. The registration deadline is February 7 and that also is the last day that you may cancel your registration and have your fee refunded. REGISTER EARLY TO BE ASSURED OF OBTAINING ONE OF THE 544 SEATS AVAILABLE.

Passing the Writing Competency Examination is a graduation requirement as stated on page 40 of the 1981-82 catalog, page 43 of the 1983-84 catalog, and page 45 of the 1985-86 and 1987-88 catalogs.

David K. Dodd
Acting Director of Testing Services

Constitution Examination

The Constitution Examination will be given in the afternoon and evening on Thursday, February 16. Register in person from 11:00 to 3:00 Monday through Friday at the booth in the Union Bookstore Lounge; bring your EIU ID, and if you are retaking the exam, \$2 for the fee. The registration deadline for this exam is Thursday, February 9.

You may retake this exam as many times as necessary to pass, but on scheduled dates only.

David K. Dodd
Acting Director of Testing Services

Students with Double Majors

Students who have two majors should officially declare them at this office (M116) at their earliest opportunity.

Sam Taber
Dean, Student Academic Services

Grade Change Appeals

Appeals to change assigned grades must be initiated by the student through the appropriate instructors within four weeks after the start of the grading period following the one for which the contested grades are recorded. The deadline for Fall Semester 1988 grade change appeals is Wednesday, February 8, 1989.

James E. Martin
Registrar

Full-Time Student Academically

In order to be considered a full-time student academically, a student must carry at least 12 semester hours each semester and at least 6 semester hours during a summer term. For any number of semester hours less than 12 during a semester and 6 during a summer term, a student is considered a part-time student academically. This is the rule by which Records Office certifies students as full-time to such agencies as Social Security, Good Student Discount, etc. If you have questions concerning any of this, please contact Records Office.

James E. Martin

Application for Graduation

Application and reapplication for graduation for Spring Semester 1989 must be accomplished no later than the deadline of 4:30 p.m. on Friday, January 20, 1989. The application forms are available in the Records Office.

James E. Martin
Registrar

Student Information Changes

When changes occur, errors are detected, or information is missing in the following basic student information items, please report them to the offices indicated: Housing Office-local and/or home address and telephone number; Student Academic Services-resident status, degree, major, minor, option, advisor; Records Office-social security number, name, classification, marital status, or any other changes or additions not covered above.

Sam Taber
Dean, Student Academic Services

Class Absence, Medical

The following procedural change

will be implemented Spring Semester 1989 with regard to class absence will be determined by the instructor according to his/her own policy.

Richard H. Larson, MD
Director, University Health Service

Adds

The deadline for adding a Spring class is January 13-TODAY. Add classes in the University Union Ballroom between 1:00 and 3:30 p.m.

Michael D. Taylor
Director, Registration

Important: ISSC Recipients

The Illinois State Scholarship Commission will not pay for course repeats if you received a grade of "D" the first time and the number of hours of the repeated course reduces your academic load to less than 12 semester hours which is full-time. You may receive only half-time support from ISSC or may be required to reimburse the University for up to half of your tuition and fees. Further, if you were enrolled half-time to begin with, a repeat course may cause you to lose all ISSC funding.

NOTE: The deadline for applying for applying in Records Office to repeat a course is prior to the 21st class day. This Spring Semester deadline is February 8 - you must apply no later than 4:30 p.m. on that date if you are repeating a course in which you originally received a grade of "D" and hope to be an ISSC recipient. If you have any questions concerning this, call Financial Aids at 581-3713.

James E. Martin
Registrar

Spring Refund Deadlines

The last day to cancel Spring classes and receive a full refund was Friday January 6. The last day to withdraw from Spring classes and receive a partial refund (all tuition and fees paid except insurance) is Wednesday, January 25, 3:00 p.m.

The last day to WITHDRAW FROM THE UNIVERSITY and receive a 50% refund is Wednesday, February 8, 3:00 p.m.; 50% of all tuition and fees paid - except insurance - will be refunded.

Michael D. Taylor

FINAL EXAMINATION SCHEDULE Spring Semester 1989

	MONDAY May 8	TUESDAY May 9	WEDNESDAY May 10	THURSDAY May 11	FRIDAY May 12
0730-0930	M-400	T-1100	T-1500, T-1530 Makeup or Arranged	M-0900	M-1000
1000-1200	T-1300 Makeup or Arranged	T-1800	T-400	T-1600 Makeup or Arranged	M-1100
1300-1500	M-0800	T-0900, T-0930 Makeup or Arranged	M-1300	M-1200	Makeup or Arranged
1530-1730	T-1200 or T-1230	M-1600	M-1500	T-1000	—
1900-2100	M-1900	T-1900	W-1900	R-1900	—

- Final examinations are scheduled on the basis of the first class hour meeting of the week irrespective of whether the first hour is classroom or laboratory activity.
- Final examinations of multiple-hour classes are scheduled on the basis of the first hour of the multiple-hour block.
- A M-, T-, W-, or R- prefix indicates whether the first class day of the week is Monday, Tuesday, Wednesday or Thursday. For instance, M-0800 indicates the scheduled time for the final examination in a class having its first class hour meeting of the week at 0800 on Monday, R-1900 is for a class having its first class hour meeting of the week at 1900 on Thursday, etc.
- Final examination periods indicated in the above schedule as "Makeup or Arranged" are to be used only in cases where,
 - The first class hour meeting of the week does not conform to the schedule patterns established herein.
 - The meeting time of the class appears in the Semester Class Schedule as "ARR."
 - The student presents an approved examination change request.
- Final examinations in one semester hour courses may be given at the discretion of the instructor and, if given, should be scheduled for the last regular class meeting of the term.
- Final examinations in courses numbered 4750 or above may be given at the discretion the instructor and, if given, are to conform to the schedule patterns established herein.
- Final examinations are to be given in all courses unless specifically exempted under the provisions of #5 and/or #6 above or by departmental recommendation to, and approval by, the Council on Academic Affairs.
- Students may not deviate from the published final examination schedule without written approval of the Dean, Student Academic Services.
- Instructors may not deviate from the published final examination schedule without written approval of the department chairperson and the Dean of the School or College according to guidelines established by the Vice President for Academic Affairs.

Samuel J. Taber, Dean
Student Academic Services

Director, Registration
Credit/no credit, Audit deadlines
The deadline for requesting Credit/No Credit grading status for a class is Wednesday, January 25 at 4:30 p.m.

The deadline for requesting Audit grading status for a class is Wednesday, January 17, 4:30 p.m. A student must be enrolled in a class before requesting either Credit/No Credit or Audit grading

status.
Michael D. Taylor
Director, Registration

Sell all your
don't
wants with
**The Daily
Eastern News
classified ads!**

CONCERTS

The Concert Committee sponsors the major concerts on campus including the annual Parents' Weekend Show. The committee is responsible for selecting the entertainers, day of the show set-up and ushering. In the past, the Concert Committee has sponsored concerts by R.E.O. Speedwagon, Cheap Trick, Andy Williams, Alabama, The Fixx, Romantics and Bob Hope.

LECTURES

The Lecture Committee brings a wide variety of nationally and internationally acclaimed speakers to campus. The goal of the committee is to provide speakers who discuss current educational and social topics of interest to the students and area community. Committee members are responsible for selecting lectures as well as making arrangements for the lectures and acting as hosts to the speakers. In the past, the Lecture Committee has presented Helen Thomas, Dr. Ruth Westheimer, Billy Hayes and Ike Pappas.

PERFORMING ARTS

The Performing Arts Committee bring nationally and world renown artists to campus. The responsibility of this committee is to select performers of a wide variety of talents such as dance, music, theater and drama. Members assist in the staging of the shows. All programs are designed to bring the arts to students at an affordable price.

VIDEO TAPE

The Video Tape Committee programs the latest movies, music videos, and EIU sporting events. Videos are shown weekdays from 9 a.m. to 3 p.m. in the Union Video Tape Lounge, located in the Union Walkway. committee members select movies to be shown. They also create and film commercials used to promote all upcoming and campus events.

PUBLIC RELATIONS

The Public Relations Committee provides promotion for all UB programs. Various types of media are used to publicize upcoming events. These include the Entertainer, which is published weekly in **The Daily Eastern News**, press releases, **The Eventsful** and the UB Hotline — 581-5959.

SUBWAY

The Subway Committee provides a variety of entertainment. It offers the hottest up and coming comedians, jazz, rhythm and blues, and rock bands. The subway located in the lower level of the University Union, offers entertainment in a nightclub setting complete with food and beverages.

GRAPHICS

Through the use of creative minds and skills, the Graphics Committee develops advertising and promotional materials for all UB events. The committee designs ads, posters, buttons, and banners. The members of this committee also get the chance to work with printers to produce publicity materials.

SPECIAL EVENTS/CRAZY DAZE

This committee sponsors two fun-filled events-Special Events and Crazy Daze. The Special Events Committee plans seasonal and unique programs throughout the year. This committee schedules events such as hypnotists, comedians, and games on the quad. The accent is on originality and the design of the programs is to be fun, yet inexpensive. Crazy Daze is two days of fun-filled events including games and entertainment to break up the wintertime blahs on campus.

HOMECOMING

Homecoming is the one event at EIU, which brings together all those who make up the institution, Students, faculty, administrators and alumni come together to celebrate good times and old acquaintances. The responsibility of the Homecoming Committee is to organize a week of activities including a kickoff celebration, coronation, games, a bon fire/pep rally, a parade and the traditional football game. It is the goal of this committee to make a memorable week for all who take part.



**UB will get you where
you want to go!**

Recruitment night is January 19
at 7 p.m. in the University Ballroom
FREE PIZZA!

MAINSTAGE

Mainstage is responsible for bringing live entertainment to campus to suit everyone's taste. The events sponsored by Mainstage are presented both indoors and outdoors to provide students entertainment in different environments.

PRODUCTIONS

The Productions Committee provides the technical support for UB events. The committee members gain skill and experience through staging professional performers and using state of the arts lighting and sound equipment.

MOVIES

The Movie committee schedules current and classic movies for the campus community. committee members are responsible for selecting films and assisting in the showing of the movies.

HUMAN POTENTIAL

The Human Potential Committee presents programs and events that increase the multicultural awareness of the campus. Programs include speakers and entertainment for diverse campus populations including handicapped, minorities and women.

For more information call 581-5117
or stop by 201 University Union.

We are currently seeking Subway,
Lecture and Mainstage Coordinators!



**Friday and
Saturday
"Hot Set Up"**
\$1.50 Pitchers
75¢ Well Drinks
\$ 1.00 Cover

U-Store Warehouse



INDIVIDUAL ROOMS

"You Carry The Key"

Charleston, Illinois 61920

Behind Rex 'n' Don's Warehouse

South Route 130

Ph: 345-3334 Night Ph.: 345-5850

Don & Mary Thomason—Owners

LOOKING
FOR A
GOOD TIME?

CALL!

THE PARTY LINE

348-1629

Wrestlers 3rd at break duals

By JERRY SOLBERG
Staff writer

Eastern's wrestling squad spent its holiday break in a way that others may not see as very relaxing. The Panther's competed in three different tournaments, including their first dual meet of the season.

Dual meets count in the overall team record and in them, it is important for wrestlers to compete more as a team than individually.

Eastern had its first taste of dual meets on Jan. 6 at the Redbird Duals in Normal. The Panthers fared well in the eight-team tournament finishing third

with a consolation victory over Marquette by the score of 25-15.

But the Eastern wrestlers were only three points away from beating Northern Illinois in an 18-15 match, which would have put the Panthers in the final round. The Panthers were also forced to spot each opposing team in the tournament six points because of a vacancy at the 158-pound division, where injured Panther Bob Johnson previously wrestled.

Although coach Ralph McCausland agrees that the loss of Johnson at 158 was a factor in the meet he said he felt, "the team didn't take advantage of opportunities they were given."

Being the first chance that

McCausland had to see his wrestlers perform as a team, he stated that overall, "we did well as a team coming together for the first time this season."

The other two meets that Eastern competed in during the holiday were the Midlands in Evanston on Dec. 29-30, and a head-to-head meet against Wright State in Dayton, Ohio on Jan. 9.

Against Wright State, McCausland said he wasn't very impressed with the team's performance even though the the Panthers won the meet.

"It was a long trip, we wrestled flat. We won, but, not impressively," McCausland said.

Swimmers back from Florida

Vincennes, Missouri-St. Louis visit EIU Saturday

By DEBBIE BULLWINKEL
Staff writer

'Tis the season to be tan - at least for Eastern's men's and women's swim teams during the recent Christmas vacation.

Twenty-eight tankers took off for Ft. Lauderdale, Fla., on Dec. 27 for what is known as the college swim form.

"We've been going to Ft. Lauderdale (during Christmas vacation) for the last 10 years," Eastern coach Ray Padovan said.

"It's a combination of some

competition and training," Padovan said. "It's a way of keeping the team together (over break)."

The swim team was in Ft. Lauderdale for 11 days. This provided the tankers with the opportunity to swim against people from various parts of the United States.

"There was a lot of interaction with swimmers (from all over) - New York, Wisconsin and Minnesota," Padovan said. "They were from everywhere."

The tankers are preparing for

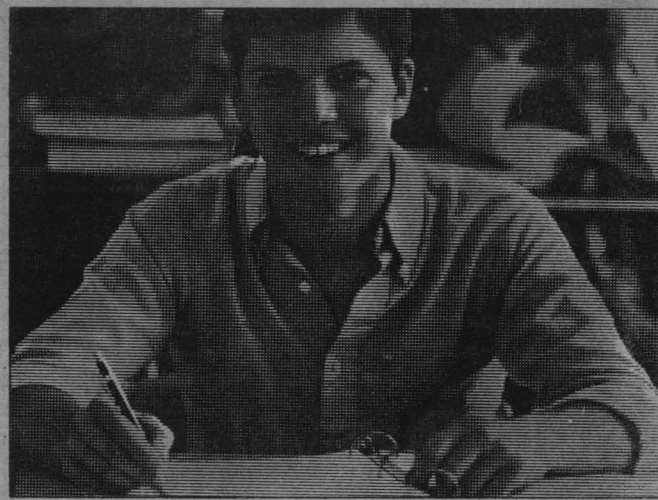
two more swim meets this weekend against DePaul on Friday and Vincennes and the University of Missouri at St. Louis in Lantz Gym on Saturday.

"Both meets should be real close," Padovan said.

So far this season, the men are 3-1 and the Lady Panthers are 2-2.

"It (the first part of the season) was a good start for us," Padovan said. "Now, we have to progress from this time (forward). The meets ahead are all important."

WE DIVIDE OUR PROGRAM SO YOU CAN KEEP YOURS TOGETHER.



If you're in college, or about to be, and you're wondering where the money's going to come from, look into the Army Reserve's Alternate Training Program. It works this way: One summer, you take Basic Training and the next summer, your specific skill training at an Army school.

You'll earn at least \$1,200 for basic and even more for your skill training. You can train at an Army Reserve unit near your college, usually serving one weekend a month plus two weeks Annual Training. You'll earn over \$80 per weekend to start.

On top of that, if you qualify, there's the Montgomery GI Bill that gives you up to \$5,040 for college.

If you want a little help keeping things together, stop by or call:

**SERGEANT DAVIS
MATTOON
234-3635**

**BE ALL YOU CAN BE.
ARMY RESERVE**

Friday the 13th is YOUR LUCKY DAY

1/2 PRICE SALE

- Jackets
- Sweaters
- Shirts
- Assorted Items

SHAFER'S

UPTOWN



**-FRIDAY-
HAPPY
HOUR**
FREE POPCORN
3-6 pm

Watch for
The Daily Eastern News
Housing Guide
Coming Soon!

GOLDEN DRAGON

CHINESE RESTAURANT

**ALL - YOU - CAN - EAT
BUFFET**

LUNCH
\$3.95

DINNER
\$6.95

FREE TEA WITH MEAL

HOURS : TUES. - SUN.

11 A.M. - 2 P.M.

5 P.M. - 9:30 P.M.

345 - 1033 W. ROUTE 16 Charleston



LIVE ENTERTAINMENT AT TED'S

FRIDAY'S BAND



SMOKEHOUSE

UNEQUALED HIGH ENERGY
ROCK-N-ROLL SHOW

FEATURING - DENNIS TIEKEN on DRUMS
GET IN 8-10 w/coupon for FREE

SATURDAY'S BAND

**"CLOCKWORK
ORANGE"**

Rock-N-Roll Show From
Champaign

Get in 8-10 w/coupon for FREE

Say HAPPY BIRTHDAY to a friend!

Buy a classified from

The Daily Eastern News

Will Rogers

CHARLESTON • 345-9222



**THE LAND
BEFORE TIME**

FR/SAT NITE 6:45 AND 8:30
SAT/SUN/MON MATINEE 2:15 PM
SUN TO THURS NITE 6:45

**MY STEPMOTHER
IS AN ALIEN**

Dan
Aykroyd

Kim
Basinger

FR/SAT NITE 7:00 AND 9:15
SAT/SUN/MON MATINEE 2:00 PM
SUN TO THURS NITE 7:00

TIME

MATTOON • 235-3515

CHILD'S PLAY
IT WILL
TERRIFY YOU **R**

FR/SAT/SUN NITE 5:15, 7:15, 9:15
SAT/SUN/MON MATINEES 1:15 & 3:15
MON TO THURS NITE 5:15 AND 7:15

**STEVE MARTIN
MICHAEL CAINE**

**DIRTY ROTTEN
SCOUNDRELS **PG****

FR/SAT/SUN NITE 5:10, 7:20, 9:25
SAT/SUN/MON MATINEES 1:00 & 3:05
MON TO THURS NITE 5:10 AND 7:20

CINEMA

MATTOON • 258-8228

THE NAKED GUN
LESLIE NIELSEN **PG-13**

FR/SAT/SUN NITE 5:15, 7:15, 9:15
SAT/SUN/MON MATINEES 1:10 & 3:10
MON TO THURS NITE 5:15 AND 7:15

**SCHWARZENEGGER DEVITO
TWINS **PG****

FR/SAT/SUN NITE 5:10, 7:20, 9:25
SAT/SUN/MON MATINEE 1:00 & 3:05
MON TO THURS NITE 5:10 AND 7:20

A BARRY LEVINSON Film

**DUSTIN HOFFMAN
TOM CRUISE**

**RAIN
MAN**



FR/SAT/SUN NITE 4:30, 7:00, 9:30
SAT/SUN/MON MATINEE 2:00PM MON TO THURS NITE 4:30 AND 7:00

After nine-year drought, Western tops EIU

By DAVID LINDQUIST
Associate sports editor

Eastern's women's basketball team dropped a crucial Gateway Conference road contest Thursday night to a school that hadn't beaten the Lady Panthers since the 1979-80 season, as Western Illinois stunned Eastern 94-79 in Macomb.

"I think you have to give all the credit to Western," Eastern assistant head coach Deanna D'Abbraccio said. "They played a superb game. They came out

ready to play."

The Westerwinds (3-10) scored 23 of the game's first 35 points to gain a 23-12 advantage with 11:14 remaining in the first half.

"They shot the ball better tonight than they have all year, which says something about our defense," D'Abbraccio said.

Western, playing its first Gateway home game of the season, raised its league record to 1-3 behind 17 first-half points from sophomore Robin Hasemann.

Eastern (8-6, 3-2) trailed 45-35 at intermission, and there was no

improvement for the Lady Panthers after halftime.

The Westerwinds rolled up 59 points in the second half, the most given up by Eastern in a half this season, and Western's total of 94 ties the year-high score Illinois State recorded on Jan. 4 against the Lady Panthers.

"We lacked defensive intensity and were unable to establish an offense," D'Abbraccio said. "Western had great balance inside and outside. They flat out beat us in every phase of the game."

Although playing without start-

ing center Laura Mull, sidelined with the flu, and standout guard Barb Perkes, out two weeks with tendinitis in her lower legs, Eastern did place five players in double-figure scoring.

Sophomore Stacy Frierdich, starting in place of Mull, led Eastern with 17 points.

However sophomore Beverly Williams, who started in Perkes' spot after scoring 17 points against Drake Monday, was held to two points on one of six field goal shooting.

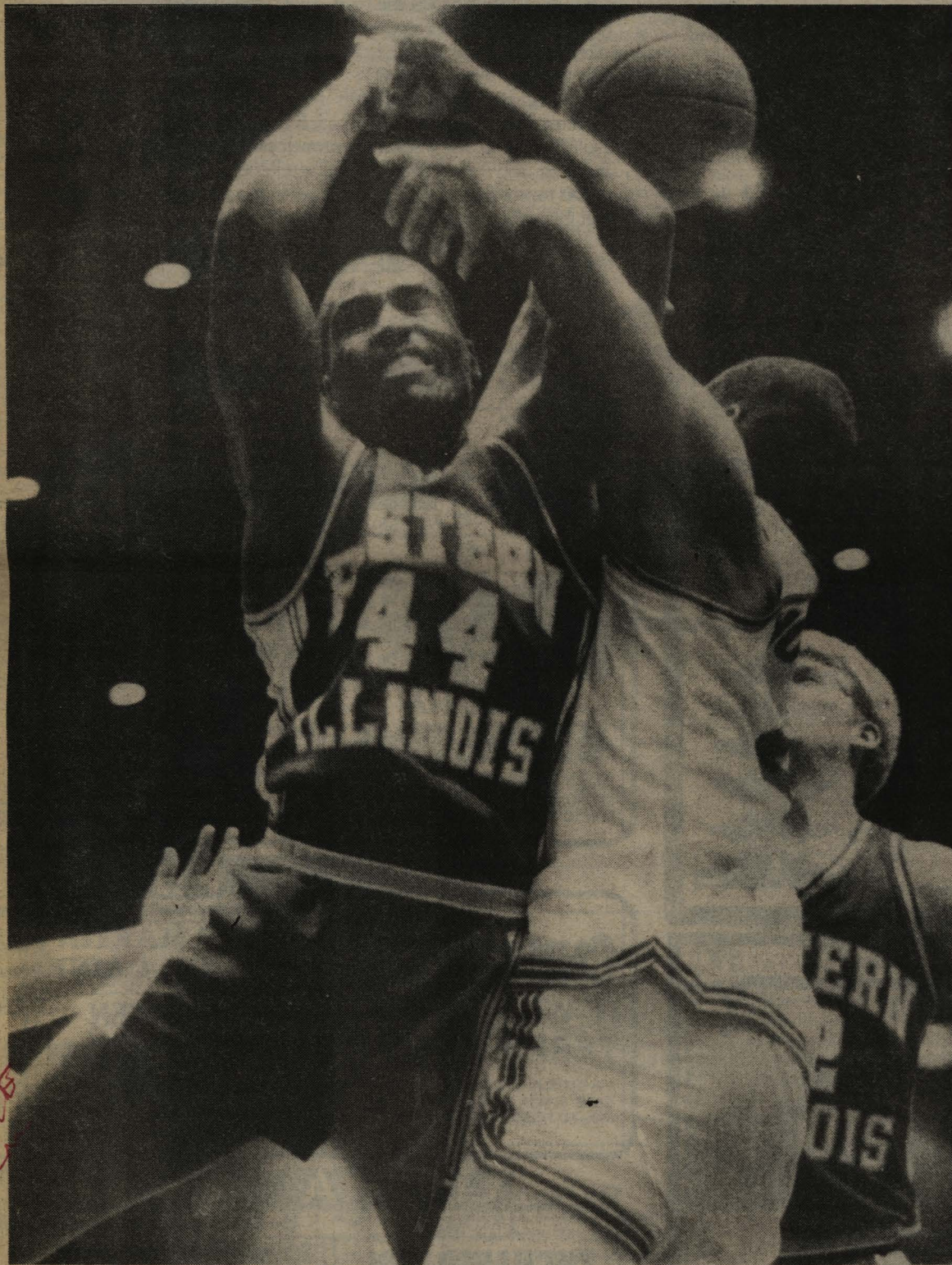
D'Abbraccio said the Lady

Panthers did receive some reserve punch from freshman guard Tracy Roller.

"Tracy came off the bench and gave us quality time at a variety of positions," D'Abbraccio said.

EASTERN ILLINOIS (79)
B. Williams 1-6 0-1 2, Tyler 5-6 2-3 13, Frierdich 6-12 5-6 17, Bonsett 7-16 0-0 15, Ethridge 4-9 1-3 10, Cavanagh 2-3 0-0 5, Roller 7-13, 1-2 15, Griffin 1-1 0-1 2.

Totals 33-79-17 79.
WESTERN ILLINOIS (94)
Irby 7-12 5-6 19, Hasemann 11-17 3-5 25, Dask 10-17 1-2 21, Giovinetti 1-4 5-7 7, Houtzel 4-8 0-0 8.
Totals 38-73 16-23 94.



MICHELLE ZAWIN / Photo editor

Eastern guard Ron Tate (44) and DePaul forward Stanley Brundy tangle for a loose ball during the Panthers' 89-75 loss Wednesday night.

Eastern to host surprising UNI

By JAMES BETZOLD
Sports editor

Eastern opens its Association of Mid-Continent conference season Saturday in Lantz Gym against Northern Iowa, a team that has had different fortunes than the Panthers in non-conference play.

While Eastern has struggled to attain consistency, UNI has dashed out to a 8-3 record, best in the AMCU, after being picked to finish fifth in the conference pre-season poll.

"They're playing as well as anyone in our league," Eastern coach Rick Samuels said. "It surprised me a bit, but they've got some good kids coming back."

The top returnee for UNI is 6-8 center Jason Reese, who is averaging 24.2 points per game, with most of those points coming in the post.

"He's a much more determined player (this year)," Samuels said. "He's not flashy. He just knows when to shoot it and when to pass it back out."

When Reese does pass it back out, it's usually to 6-9 forward Steve Phyfe, who is averaging 13.0 ppg.

"The combination of Phyfe and Reese is the most difficult part for us to defense," Samuels said.

And UNI's early-season opposition has discovered that, too, as the purple Panthers have averaged 87.8 points per game.

"They're an opportunistic running team," Samuels said. "(But) they're not going to push the ball

Northern Iowa vs. Eastern
Where: Lantz Gym
When: Saturday 7:30 p.m.
Radio: WLH-FM (97)
Panthers update:
Eastern hit a season-high eight three point goals against DePaul. Eastern coach Rick Samuels said that was probably because of the Blue Demons size inside. "We haven't practiced it (recently)," he said. "We've given our kids the freedom to shoot it all year. We're also playing (long-range shooter) David Gagnon more. (And) I'm pleased that Barry Johnson took a couple of three-pointers."
Freshman center Jim Combest returned to practice Thursday after missing the Northern Illinois and DePaul games with the flu. In addition, Combest was kept away from the rest of the team to keep the bug from spreading. Samuels said that might have been impossible since Combest is Olson's roommate. No illnesses have been reported.

at you all the time."

In addition, UNI also allows the most points per game of any AMCU team, 79.4. But Samuels said that doesn't mean Eastern will concentrate on defense more than offense.

"I'm concerned about everything," he said. "We haven't shown the ability to handle team for 40 minutes."

In addition, Samuels said Eastern will be coming off a "tough week" with games against Northern Illinois and DePaul. The physical game at DePaul caused Samuels to put his team through only a light practice Thursday afternoon.

But with conference play beginning, Samuels said he hopes to instill new meaning into the games.

"Every game is important now," he said. "Now there are two columns where the wins and losses will be recorded - over and in conference."

Track squad hosts Invite, women cancel opener

By AL LAGATTOLLA
Staff writer

In its first meet of 1989, Eastern's track team will host the EIU Invitational at 1 p.m. Saturday in Lantz Fieldhouse.

The meet, which is non-scoring, will feature many track clubs including the Kinnecek Road Runners and the Springfield Running Club, as well as Parkland College and Southern Indiana

Murray State women drop out

The Lady Panther track team, slated to open its indoor season Friday against Murray State, will have to wait another week before the first meet of the year.

Head coach John Craft said that Murray State pulled out of the meet, after it was rescheduled from Saturday to Friday.

"We've had a lot of people with nagging injuries," Craft said. "Although Murray State pulled out on us at the last moment, it could of been a blessing in disguise."

Eastern will open their regular season at the Purdue Invitational in West Lafayette, Ind., on Jan. 20.

the only problem is that no one is ready," Eastern track coach Neil Moore said. "A lot of them called and said that they had registration and such."

But that won't affect Eastern's goals for the meet.

"The primary purpose will be to evaluate our vacation training," Moore said. "No one's ready right now."

And while no one may be ready quite yet, there will be some scoring meets later in the season.

"We will have meets that we

will score, just for fun," Moore said. "Track coaches are not concerned with scores except at conference meets and NCAA meets."

Although placement and scoring may not be important, Moore will evaluate effort and time use during the season.

"When I'm home, everyone gets in," Moore said.

Also, Moore said that officials are needed for the meet and men or women interested should phone him at his office, 362-2625, or at home, 345-6680.

competing as an open meet will be former Eastern

standout Jim Maton.

However, several colleges

declined invitations.

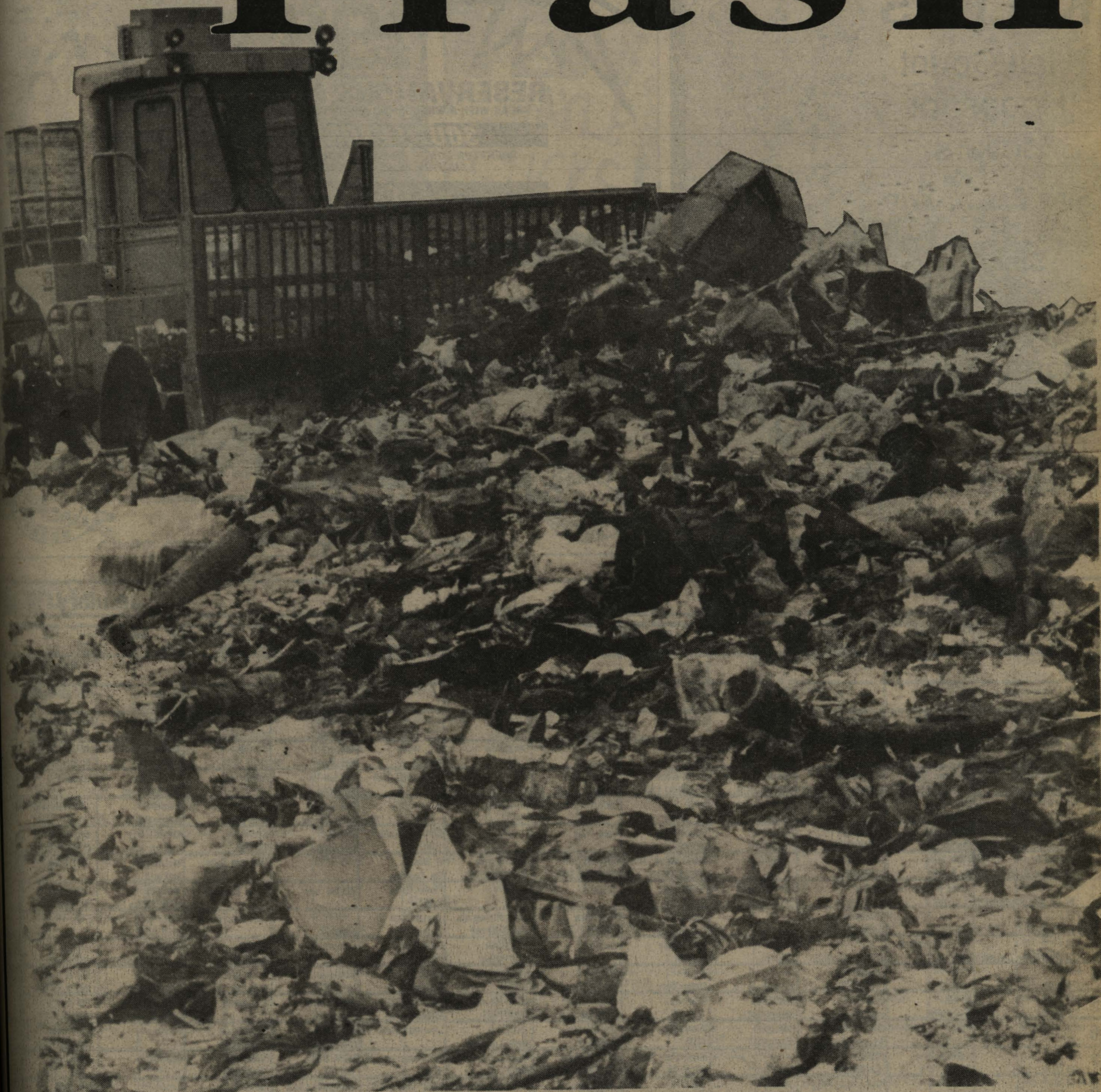
"A lot of interest was shown;

VERGE

OF THE WEEKEND

Weekend Supplement
To The Daily Eastern News
Section B, 8 Pages

Trash



RUSSELL STARE/Staff photographer

PAGE 8

PAGE 6

INSIDE

REVIEWS

PINK FLOYD
"Delicate Sound
of
Thunder"

HO, HO, HUM
Our cinema writer
recaps
the holiday season's
best flicks.

Dear Reader

Of all the problems facing our world, solid waste disposal doesn't seem to come up in conversation very often. Non-the-less, will there be enough space to store our unwanted and throwaways? When there is no landfill space left for our grandchildren to throw their garbage into, what will they do with it?

Another problem that society turns their cheek to is the hazards of filling our land. We don't know if it's safe. Only time will tell the problems that will arise.

So, next time you put that garbage bag out on the curb, stop and think about what we are doing to our own environment.

Rebecca A. Gambill

Verge editor
Matthew Maynard

Assoc. Verge editor
Rebecca Gambill

Verge Photo editor
Steve Beamer

Staff writers
Patrick Hagarty, Roger Johnson, Matt Mansfield, Debbie Carlson, Bret Loman,
Sandy Skadauski, Anne Lawson, Debbie Bullwinkel,
Tony Campbell and Brian Reilly.

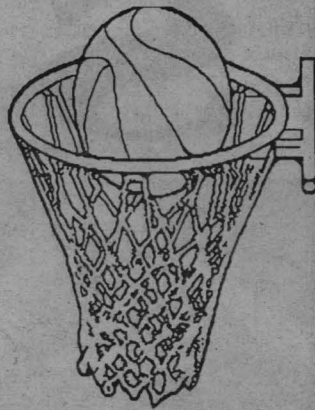
Staff photographer
Russell Stare

Graphics
Robb Montgomery

Kelly's The Chip With Zip

KELLY'S

Half Count
Hoops for
dollars

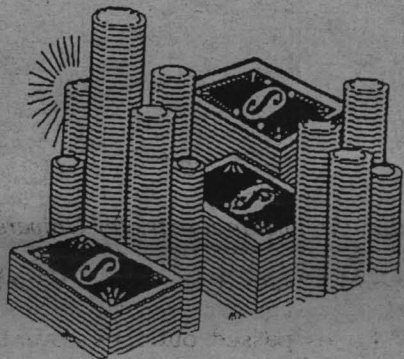


Sink 2.....Win
\$3,000

Sink 3.....Win \$6,000

EIU vs.
Northern
Iowa

Lantz Gym
7:30 p.m.



Sunchase 8th Annual
**SPRING
BREAK
1989**



RESERVATIONS AVAILABLE NOW!
• BREAK WITH A WINNER • NO AIR MATTRESSES • CONFIRMED RESERVATIONS •

SOUTH PADRE ISLAND

SHERATON CONDO OR HOTEL, HOLIDAY INN, GULF VIEW OR
LANDFALL TOWER CONDOS • 5 OR 7 NIGHTS

\$149*
from

STEAMBOAT

SHADOW RUN CONDOS OR OVERLOOK HOTEL • 5 OR 7 NIGHTS
LODGING-LIFTS-PICNIC-RACE-GOODIE BAG!

\$213*
from

DAYTONA BEACH

TEXAN HOTEL AND KITCHENETTES
7 NIGHTS

\$118*
from

MUSTANG ISLAND/PORT A.

PORT ROYAL CONDOS
5 OR 7 NIGHTS

\$136*
from

HILTON HEAD ISLAND

HILTON HEAD ISLAND BEACH & TENNIS RESORT
7 NIGHTS

\$107*
from

DON'T DELAY!

CENTRAL SPRING BREAK TOLL FREE INFORMATION & RESERVATIONS

1-800-321-5911

7AM-7PM M-Th, 7AM-5PM Fri, 9AM-5PM Sat, Mountain Standard Time
Reservations may be made by credit card



or you may contact your local Sunchase campus representative or your favorite travel agency

SATURDAY

© 1989 The TV Living Group, Inc. Ft. Worth, TX

January 14

	WTWO (2)	WCIA (3)	WAND (12)	ESPN (5)	USA (9)	WGN (10)	AMC (1)	WILL (12)	FAM (7)	DISC (8)	WEIU (2)	TBS (6)
5 AM						Make Happen						O. Wilson Lines
6 AM	Transformers			SportsCenter Sportsman	TBA	Larry Jones World Tom'w					Mission Kosciuszko	(:05) GunsMote
7 AM	Kissyfur Gummy Bears	Raggy Andy Superman	F'stone Kids Winnie the Pooh	Fishing Challenge	TBA	Farm Report Chazlando				Dry Gulch Superbook		(:05) Bonanza
8 AM	Smurfs	Muppet Babies (CC)	(CC) Real	Outdoors Fishin' Hole	TBA	Peop'a Chicago	Off the Air	D.C. Week Wall St	Gerbert Kidsworld	Survive	Art Gallery Kitchen	(:05) National Geographic
9 AM	Chipmunks ALF	Pee-wee (CC) Garfield (CC)	Ghostbusters Scooby Doo	Pull Series Sunkist KIDS	MOV: Alien Predator 1987	Minority Bus Make Happen		Nova 1987 (CC)	Rin Tin Tin Sky King	Adventurers	Martin Yan Process Food	Explorer
10 AM	Ed Grimley	Hay, Vern! Mighty Mouse	Bugs and Tweety (CC)	School Sport GameDay	(PG)	Dukes of Hazzard	Off the Air	Nature (CC)	Roy Rogers Lone Ranger	Ark on Move Cold Edge	Gardener Nancy Sews	(:05) Wrestling
11 AM	Punky B. Fat Albert	Mighty Mouse Storybreak	Crack-Ups (CC) Wknd Special	College Basketball	Dance Party Rockfile	Soul Train		Only One Earth 1987	Rifeman Cimarron Strip	Secrets Secrets	Create Liv'g One on One	(:05) Empire of the Ants
12 PM	Kid Songs Public People	TBA	Kidsongs In Focus		MOV: Blood Beast Terror	MOV: Hardy Working 1981	MOV: Snake Pit 1948 (NR)	J. Wilson So. Cooking		Northern Safari	McLaughlin Arts and	1977 (NR)
1 PM	NCAA Basketball	NCAA Basketball	Digest Its a Living	NCAA Final 4 LPGA Golf	1989 (NR)	(PG)		Flower Shop Quilting	Wagon Train	Coast to Coast	Sciences MOV: Hi De Ho	(:05) Hardy Working 1981
2 PM			Professional Bowlers Tour		Insider Cover Story	MOV: Sea Wife 1957	MOV: Pickup on South Street	Joy of Paint Watercolors	Rifeman	Lost and Found	1947 (NR)	(PG)
3 PM	Bob Hope Classic	NCAA Basketball	ABC Wide World of Sports	Billiards	Bust Loose Trouble	(NR)	1953 (NR) MOV: Night	Grow'g Bus. Computer	Gunsmoke	Portraits Rendezvous	TV Bowl W. Alexander	(:05) Brady (:35) Beaver
4 PM				SuperBowl 10	Throb Sister Sam	T and T Good Times	World 1932 (NR)	Murk Previews	Bonanza	In the Wild Wild Reluge	A. Jackson EIU Connect	(:05) R. Marti (:35) D. Wilso
5 PM	News	Illinois NBC News	Ebert ABC News	NFL Trivia SportsCenter	Diamonds	Chas. Charge From Scratch	MOV: Hound-Dog Man 1959	Degrassi (CC) Power Choice	Bordertown Crossbow	Annapuma	Wildside Fmly Classic	(:05) U.S. Olympic Gold
6 PM	Hee Haw	News 9 to 5	She Sheriff Mama's Fam.	College Basketball	Miami Vice	She Sheriff Benson	(NR) MOV: Love Me	Lawrence Walk	Rin Tin Tin Campbells	Sport'g Life Sport'g Life	Europe	(:05) World Championship
7 PM	227 (CC) Amen (CC)	MOV: A Fine Mess 1986	MOV: Goldfinger		MOV: Long Dark Night 1977	MOV: Agatha Christie's A	Tender 1956 (NR)	Wonderworks (CC)	MOV: Bella Starr's	Challenge Challenge	Gemma	Wrestling
8 PM	Gold Girls Empty Nest	Dirty Danc'g	1964 (GP) (CC)	College Basketball	(R)	Caribbean Mystery	MOV: Snake Pit 1948 (NR)	MOV: Sea Wolf 1941	Daughter 1948	Far East	Aspen	(:05) Man Without a
9 PM	Hunter	West 57th (CC)	Murphy's Law (CC)		Hitchhiker Hitchcock	News		(NR) Bridge	Bordertown Crossbow	Natural Wild Natural Wild	Bergerac	Star 1955 (NR)
10 PM	News NAACP Image Awards	News TBA	News Twite Zone Wrestling	SportsCenter College Basketball	MOV: Slumber Party '57 1977	Darkside MOV: Action In the North Atlantic 1943	MOV: Pickup on South Street 1953 (NR) MOV: Night	Exec Stress MOV: Dr. Who: Robot	Rin Tin Tin Campbells Zola Levitt Amer. Outdrs	Animal World Naturalist Safari	Sneak Pview 1915	(:05) Tracks
11 PM	Top Ten News	Sign Off	(:15) In Focus (:45) News	NCAA Final 4	MOV: Pandemonium		World 1932 (NR)	Sign Off	Varied	Surveillance	Sign Off	(:05) Tracks
1 AM	Sign Off		(:15) Sign Off	SportsCenter Arm Wrestling	(PG)	Monsters At the Movie	MOV: Hound-Dog Man 1959		Jewish Voice Varied	Beyond 2000		(:05) Tracks
2 AM				College Basketball	MOV: Slumber Party '57 1977	USA Tonight	(NR) MOV: Love Me		MOV: Brava One 1956 (NR)	Sign Off		(:05) Tracks
3 AM					(R)	MOV: Day of the Jackal	Tender 1956 (NR)					(:05) Tracks
4 AM				Pro Golf	MOV: Pandemonium	1973 (PG)	MOV: Snake 1948 (NR)		MOV: Trail's End 1949 (NR)			(:05) Tracks

Remembering 1988

The biggest story of 1988 at Eastern, and the entire nation, was who will be the next president.

Last October Dan Quayle visited Eastern on his way to the White House. Unexpectedly, his visit was met by some very strong opposition.

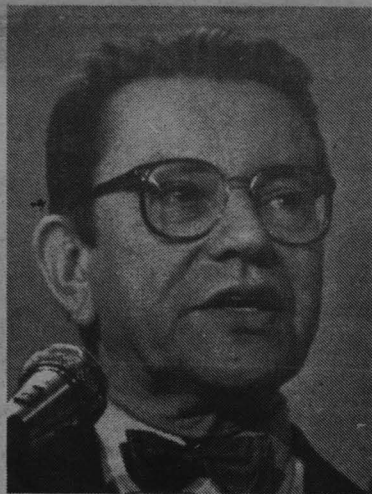
Paul Simon, (D)-Illinois, came in the spring. His hope to rule the land were dashed in the primaries.

Closer to home was the

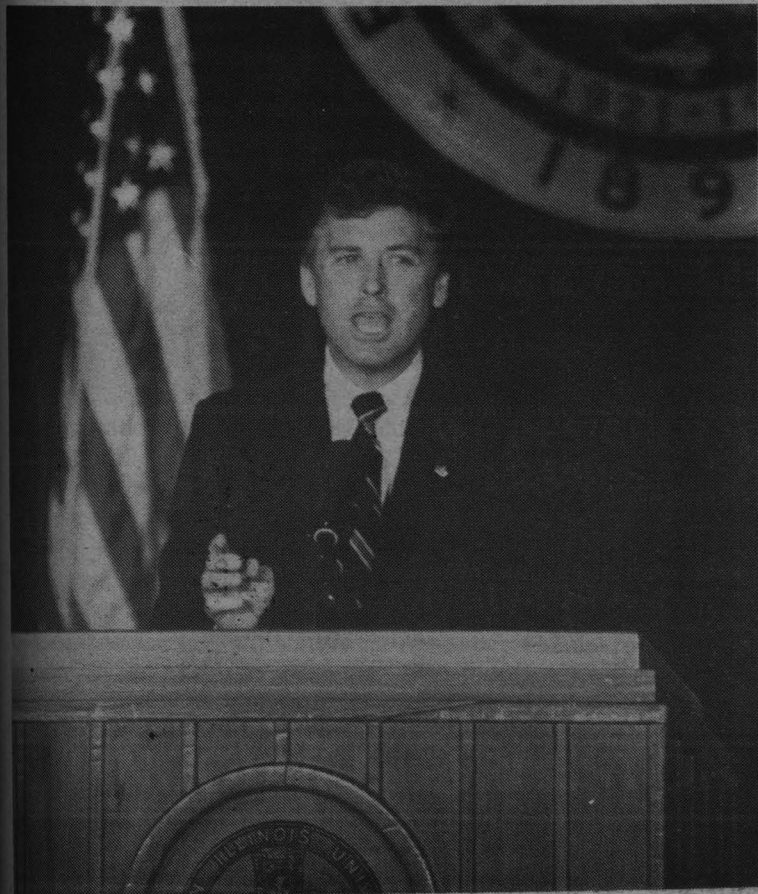
question of the Greek Court. Many Greeks expressed doubt about living under university control. The construction began anyway. Who will live there remains to be seen.

Other stories of 1988 were the condom issue, should the university place condom machines in the dorms? Eastern says "no".

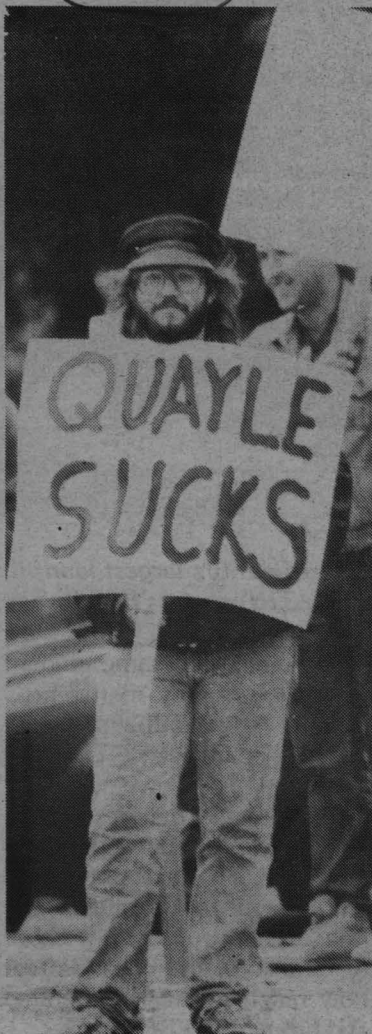
Teacher flight. Several teachers left Eastern for other universities. They cited low salaries as the reason.



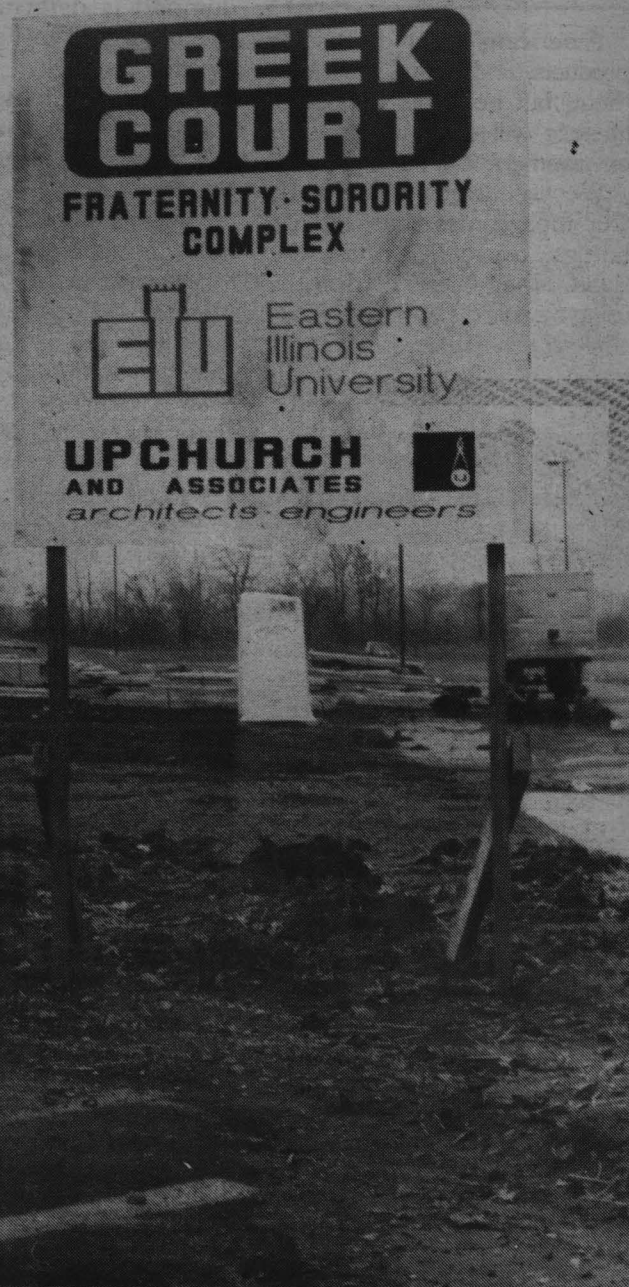
Last spring Illinois' favorite son Paul Simon spoke.



Then presidential hopeful Dan Quayle spoke to Eastern at packed Lantz Gym.



Quayle's visit was met with some opposition.



Still a pressing question of 88 Greek Court. Will the Greeks be willing to live under stricter University regulation.

The great bagel fiasco. As a promotional stunt Eastern and Craft Foods passed out free bagels at a football game. Before long, bagels were all over the playing field.

SUNDAY

© 1989 The TV Listing Group, Inc. Ft. Worth, TX

January 15

	WTWO 2 2	WCIA 3 3	WAND 7 17	ESPN R	USA 9	WGN 10 13	AMC 21	WILL 12 12	FAM 17	DISC 23	WEIU 22 21	TBS 20
5 AM									NewsSight 89			World
6 AM	Jerry Falwell			SportsCenter	Callicpe	Dr. Kennedy	Power Hour	Sign Off	Kenneth Copeland			T & J
7 AM	Dr. James Kennedy	Hour of Power	Day at Time	Magic Years	Sunday Cartoon	(-15) What No			Dr. James Kennedy			(-05) Flint
8 AM	In Touch	CBS Sunday Morning	Viewpoint	NBA Today		Shut In Mass	Off the Air	Sesame Street	Sunday Best	Futurascan		(-05) Flint
9 AM	Day Discover	Oral Roberts	Dr. James Kennedy	Sportraits		BraveStarr		Sesame Street	L. Ogilvie	Automated		(-05) News
10 AM	Heritage	World Tom'w	Truth Herald	Reporters		MOV: Rooster	Off the Air	Mr. Rogers	Kidsworld	Horse In Sport	Chris Clesup	Big Man 1970
11 AM	Quitting	NCAA Basketball	United Cerebral	Cutting Futurity	Wrestling	(PG)		(CC)	Rifleman	Challenge	This Is Life	
12 PM	NCAA Basketball			LPGA Golf	Street Hawk	Wild, Wild West	MOV: A Half of Rain 1957	McLaughlin	Strip	Alder	McLaughlin	(-35) War
1 PM		CBS Sports Sunday			MOV: Big Brawl 1980	MOV: Princess and the	(NR)	Money Wild	Wagon Train	Annapurna		Wagon 1967
2 PM	NBC SportsWorld			College Basketball	(R)	Pirate 1944	MOV: Gambling House 1950	Julia's	Rifleman	Sport'g Life	State of the Art	(-35) Sands of
3 PM	Bob Hope Classic	Celtics vs Bulls (L)	Telethon		Throb	MOV: Little Lord	(NR)	Woodwright	Gunsmoke	Survive	Wm Alexander	Two Jma 1949 (NR)
4 PM				Pro Skiing	Hitchcock	Fahrenheit 1980 (NR)	Fahrenheit 451 1967 (NR)	Vict. Garden	Bonanza	Animals	American Art	(-35) Beaver
5 PM	NBC News	Good Fishing		Pro Skiing	College Basketball	MOV: Going In Style 1979	MOV:	WAM Am.	Bordertown	Northern Safari	Wildside	(-05) Wrestling
6 PM	Magical Disney	60 Minutes (CC)	Incredible Sunday (CC)	SportsCenter		(PG)	Bombardier 1943 (NR)	Austin City	Our House	World Showcase	Dick Powell	MOV: Big Jake 1971 (PG)
7 PM	Family Ties	Murder, She Wrote (CC)	Mission Impossible (CC)	NFL Theatre	Miami Vice	Topl. Threat	MOV: Junior	Nature 1987 (CC)	Animals	Testament	Detectives	
8 PM	MOV: Gung Ho 1986 (PG13)	MOV: Unconquered	MOV: Raw Deal 1986 (R)	College Football	ACE Awards: Ten Years of	Star Search	Miss 1945 (NR)	Masterpiece	ACE Awards: Ten Years of	ACE Awards: Ten Years of	Man About	ACE Awards: Ten Years of
9 PM	(CC)	1989	(CC)	College Football	Excellence 1988 (NR)	News	MOV: A Half of Rain 1957 (NR)	All Creatures	Excellence 1988 (NR)	Excellence 1988 (NR)	G. & Mildred	Excellence 1988 (NR)
10 PM	News	News	News	Bowl from	Cover Story	Monsters		Favily Tower		J. Thompson	Two Ronnies	Jerry Falwell
11 PM	Geo. Michael	Magnom, P.I.	Rich		Inside:	MOV: Brazil	MOV: Gambling	Previews	Larry Jones	American Album	Blake's 7	World
12 AM	News	Whitecap	Collar 1978 (R)	SportsCenter	Wrinkles	1985 (R) (CC)	House 1950 (NR)	Sign Off	Conversation	Coast to Coast	Sign Off	Child Fund
1 AM		(-15) Sign Off	(-45) Digest	NFL Great	FoodSaver	At the Movie	MOV: Fahrenheit		700 Club	Prof. Nature		Fletcher
2 AM			(-15) Sign Off	LPGA Golf	Financial	USA Tonight	451 1967 (NR)		Movie	Sign Off		Save Child
3 AM					Update	MOV: Rose 1979 (R)	MOV: Bombardier					Years of
4 AM				Thoroughbred	Wrinkles		1943 (NR)		Sign Off			(NR)

Disposable society needs to clean up act

BY REBECCA GAMBILL
Assoc. Verge editor

Americans want disposable products, and, today they have them; but how this disposable lifestyle will effect us and our environment is yet unknown.

We use disposable diapers. Our food comes in disposable bottles, cans and containers. Soon, many of us will even be using disposable contact lenses.

What Americans do not realize or do not care to realize is that those disposable one-use products must go somewhere besides into the nearest garbage can. Disposing of waste costs more each year there is a growing expense of landfilling and the decreasing amount of space left to landfill.

Eastern Illinois University spends \$120,000 yearly in disposal costs, said Physical Plant Director Vic Robeson. The residence halls alone produce garbage costing the university \$90,000 per year, he added.

Eastern uses landfilling to dispose of its waste. Other options, such as recycling or incineration, are not cost efficient, Robeson said.

"It's a great philosophical idea, but if you can't do it on a large scale, it's not cost efficient." He said theoretically recycling and combustion to form energy are both possible, but Eastern is not located in the type of area that could benefit from such an operation. Also, Eastern does not produce refuse of a consistent amount yearly that an incinerator requires.

Most Americans think that once in the waste can or taken to the curb, garbage is gone for good. Actually, after unwanted items are thrown in trash cans, the refuse is collected in large dumpsters throughout campus. Those dumpsters are emptied regularly by Kleenwel Disposal Inc., owned by Carl and Edna Ball, Charleston.

Kleenwel takes the refuse to the Environmental Reclamation Co. (ERC landfill), also owned by Carl and Edna Ball, located west of Charleston on Illinois Route 316.

At the landfill, garbage trucks are weighed fully loaded. They are then weighed empty when leaving the landfill. Marjorie Thennes, manager of Kleenwel

and ERC landfill, explained this is how the weight of the refuse dumped is determined. The weight is used to figure dumping charges.

After the initial weighing, trucks drive to the dumping site, where the refuse is compacted.

Thennes stressed the importance of compacting refuse to save landfill space. "The idea is to shred the trash, to get a lot of air in it and compact it," she said. "Because landfill space costs so much and is going to cost even more, you want to use it to its utmost. Once we reach the limit, that's it."

After compaction, the refuse is dumped into the landfill. At the end of each day, a layer of dirt is spread over uncovered refuse, Thennes said.

Landfilling is the most popular method of refuse disposal used in Illinois. The Illinois Environmental Protection Agency estimated in 1987 that 95 percent of waste generated in Illinois was landfilled. Remaining waste was either recycled or incinerated.

In its 1988 annual report, the IEPA reported a decrease of 13 operating landfills from 1987 to 1988. The decrease was mainly due to the closing of landfills, but a small difference was caused by landfills which reported to the IEPA in 1988, but not in 1987.

The IEPA also reported that, "Nearly one-fourth of the state's counties have no permitted landfill or incinerator." Two counties which border Coles county, Edgar and Cumberland, are among those counties with no permitted landfills.

Moultrie and Douglas counties, which also border Coles, may be among those statistics soon. The one reported landfill in Moultrie county is estimated to be filled to capacity in only one year. The Douglas county landfill should last a few years longer, but it is estimated to be closed within the next 10 years.

Coles county had two IEPA reported landfills, ERC landfill and Coles County Landfill, in 1988. Coles County Landfill was reported having two to three years of capacity left. ERC landfill was reported having 14 to 18 years of capacity left; however, Thennes said that the IEPA figure is low.



RUSSELL STARE / Staff photographer

Coles County's largest landfill, the Environment Reclamation Co., of Charleston on Illinois route 316, accepts Eastern's refuse for landfilling.

"Assuming the same amount of refuse comes in (to ERC landfill), the landfill probably has 30 years left," Thennes said.

She stressed the life of ERC landfill will greatly depend on the rate of refuse generated and brought to the landfill. The rate of industry in Coles county, she explained, can effect how much refuse is generated and brought to ERC landfill.

The IEPA uses an estimated pounds per capita per day of refuse figure for all counties in the state to calculate estimated years of life left for a landfill. Thennes made her estimation based on specific information about ERC landfill and the average refuse it takes in.

Because two counties surrounding Coles county have no landfills and another has only a relatively short life left, Thennes said that some of the refuse from those counties may come to Coles county in increasing quantities in the future. She emphasized, however, that this does not have to be the case.

The counties could take their refuse to other counties or

other states due to proximity of landfills, rates and the possibility of more regulations and fees, Thennes explained.

Thennes estimated that ERC landfill accepted 12,000 cubic yards of refuse in 1988. The IEPA estimated a much higher figure of 130,231 cubic yards of refuse imported in Coles county in 1988. Thennes explained this figure is probably high, again, because of the estimations and assumptions made by the IEPA in calculating these figures.

"I just know that I'm not worried about taking care of this county's (solid waste disposal) needs for many years," Thennes said.

Higher population along with higher amounts of disposable items seem to be what most in the field believe is causing the rise in generated refuse. The Illinois Solid Waste Association (ISWA) in its policy on solid waste management states, "Growing populations and the abundance of throw away articles exacerbate the solid waste problem."

ISWA is a lobby group of

owners and operators of landfills and waste collection agencies.

While the number of places to dispose of refuse has decreased the amount of solid waste produced has increased. John Kirby, executive director of ISWA, further explained, "In the 1950s there were so few chemicals that we could bury (refuse) all in the ground. But until 1988, we have not changed the way we dispose of this waste."

Kirby believes that Illinois needs to educate the public about the use of landfills and the dangers that can occur so the land can be used more safely. He also believes that if people would sort their refuse and recycle what is recyclable, landfilling would be much less controversial.

Besides running out of landfill space, many other problems can occur if the proper precautions are not taken. Landfill operators must watch for hazardous wastes, monitor water in the landfill to prevent contamination of air and ground

MONDAY

© 1988 The TV Listing Group, Inc. Ft. Worth, TX

January 16

	WTWO 2 2	WCIA 3 3	WAND 7 12	ESPN 2	USA 9	WGN 10 7	AMC 17	WILL 12 12	FAM 17	DISC 68	WERJ 29 31	TBS 30
5 PM	News	News	Wfn, Lose	SportsLook	She-Ra	Fact of Life	(NR)	Bus Rpt	Bonanza	The 1930's	Wall Street	(05) One Day
:30	NBC News	CBS News	ABC News	Sportraits	Cartoons	WKRP				Victorian	Final	(35) 9 to 5
6 PM	USA Today	News	News	SportsCenter	Miami Vice	Cheers	MOV: Claudia	MacNeil Lehrer	Our House	Wild Monitor	Coach Corner	(05) Andy
:30	Family Feud	PM Magazine	Cosby	College		Night Court	1943 (NR)			Portraits	News	(35) Sanf'd
7 PM	ALF (CC)	Newhart (CC)	MacGyver (CC)	Basketball	Murder, She	Martin Luther		Big Bird in	MOV: Angel and	Animal World	Sts. San	(05) Blood &
:30	Hogan Fam	K. & Allie			Wrote	King: Living the		Japan 1988 (NR)	the Badman	Naturalist	Francisco	Orchids, Part 1
8 PM	MOV: Cover	Murphy Brown	MOV: Ryan		Prime Time	Oream	MOV: Road	Masterpiece	1947 (NR)	Wild Orphans	Combat	1985 (CC)
:30	Girl and the	Designing (CC)	White Story	College	Wrestling		House 1948	Theatre (CC)		Wild Chron.		
9 PM	Cop (CC)	The Judys	(CC)	Basketball		News	(NR)		700 Club	Coast to Coast	USA Tonight	(05) Blood &
:30											News	Orchids, Part 2
10 PM	News	News	News		Miami Vice	Hooner	MOV: Claudia	Bill Moyers	Remington	Living Body	EastEnders	1985 (CC)
:30	Tonight Show	M*A*S*H	Love Connect	SportsCenter		Hill Street	1943 (NR)	MOV: Corvette	State	Earthfile	Golden Years	
11 PM	Letterman	USA Today	Nightline (CC)	NFL Theatre	Dragnet	Blues		K-225 1943	MOV: Angel and	Nature of Thing	Fugitive	(05) Lady
:30		Current Affair	Sweathearts		Edge Night			(NR)	the Badman	Nature of Thing		Sings the
12 AM		ET	Superior Ct.	NFL Theatre	Search Tom'w	Look 1981 (NR)	MOV: Road	Sign Off	1947 (NR)	Wild Monitor	Sign Off	Blues 1972 (R)
:30	Bob Costas	Sign Off	News		Diets		House 1948			Village		
1 AM	News		Sign Off	SportsLook	Secrets		(NR)		700 Club	Secrets		
:30	Sign Off			SportsCenter	Winkles	Hogan				Secrets		
2 AM				Arm Wrestling	Discovers	USA Tonight	MOV: Blind		Varied	Sign Off		(05)
:30				CBA Basketball	Food saver	Hogan	Adventure 1933					Mahogany 1975
3 AM					Update	MOV: Pete 'n'	(NR)					(PG)
:30					There's Will	Thille 1972	Sign Off					
4 AM					Soloflex	(PG)			Bring 'Em Back			(20) Stooze
:30				Getting Fit	Healthy Diet							Gomer

Landfill space decreases daily

* Continued from page 4
water and install vents to release gases produced by decomposing garbage.

Thennes said if all tests are performed properly and items that do not belong in the landfill are kept out, there should be no problems. She also stressed there are a lot of things not known about landfilling and waste disposal.

Landfills "can take any general refuse, commercial wastes which are known as special wastes," said Thennes. "What we cannot take is listed hazardous waste."

If a customer brings or asks to bring hazardous wastes to ERC landfill, Carl Ball III, head of operations, said, "We would turn them away." Ball said hazardous wastes would need to be taken to Peoria or to another hazardous waste site in Illinois.

Hazardous wastes, which cause many problems including contamination of air and ground water, are detected in many ways Thennes said. They can be detected by sight or smell, such as swimming pool chemicals. "Also, we talk to our customers so that they know what we can and cannot accept."

Eastern does not produce any hazardous wastes that Robeson is aware of. "We're not a high research institution, and we don't get into those kinds of wastes."

Liquid in landfills is another highly debated issue among people in the field. Thennes said although liquid is inevitable in landfills, there are pros and cons as to whether landfills should be drained of liquids.

Thennes explained that as liquid drains throughout the landfill, it can pick up soluble substances from the refuse. Liquid that has picked up these substances is leachate (The liquid leaches soluble substances into it).

Some feel that leaving leachate in landfills increases the chance of adverse chemicals penetrating liners at the bottom of the landfill, getting

into ground water and possibly contaminating it.

Others feel that draining the liquid could break the seal of the liners. "They feel that it is better to be overly cautious because the landfill already has liners that were intended to contain the liquid," Thennes explained.

ERC landfill does not currently collect the leachate. Thennes said that in the future, the landfill will practice leachate collection at the bottom of the landfill whether regulations require it or not. She added, however, that they may or may not drain the leachate depending on regulations at that time.

After a landfill has reached capacity, tests must be performed on a regular basis by the owners of the landfill, said Thennes. Ground water samples must be taken quarterly, she explained, and 10 to 34 items must be tested for in the water.

Vents, which should be installed throughout the life of the landfill, are used to release methane gas, said Thennes. This gas can be sold for energy but there must be a market for it.

All of these tests are required by state, federal and, in some areas, local or municipal authorities for 15 years after closure. During this time, "If any of those samples shows any problem (the owners), need to take corrective action," she said.

To pay for the post-closure monitoring, Thennes said that a required fund is set up by the owners of privately owned landfills. She said public landfills use tax money for post-closure support.

Thennes and other experts in the field feel sure that landfilling rates will rise in the future, meaning it will cost more for each garbage bag that is put on the curb.

Future regulations are what Thennes sees as a major factor in the rising costs. "The cost of landfilling is due to, first, equipment, then to regulations, regulations and more regulations."



RUSSELL STARE / Staff photographer

Landfill machinery bury the day's garbage Wednesday at ERC land.

Eastern recycling wouldn't pay off

BY REBECCA GAMBILL
Assoc. Verge editor

With the rising cost and decreasing space of landfilling, many believe that recycling and source reduction are needed more than ever.

Eastern has looked into recycling some of its refuse, Physical Plant Director Vic Robeson said, but landfilling the garbage seems to be the best solution right now.

"What you'll find is that (recycling) is not cost efficient," Robeson said. Recycling Eastern's refuse would cost the university more in man hours and additional equipment than it would generate in profit, he explained.

Location would be a big problem with a recycling operation the size that Eastern would need to operate, Robeson said. Recycling is a very noisy operation and carries a certain amount of odor with it, he explained, adding that anywhere the university would choose to locate such an operation, the adjacent residential area would complain.

A term has been coined for the resistance to such operations and landfilling and garbage sorting. NIMBYism, or Not-In-My-Back-Yard, explained John Kirby, has developed from the rising controversy about what should be done with our garbage and where it should be done. Kirby is executive director of the Illinois Solid Waste Association, an interest group of owners and operators of landfills and waste collection agencies.

Another problem would be the additional man hours it would take to carry out a large scale recycling operation, Robeson said. He estimated that an additional 30 employees would have to be hired to run such an operation. Adding 30 employees to the current crew of 54, said Robeson, would obviously cost the university additional money for wages.

Besides additional employees, additional dumpsters would also be necessary. Recycling inevitably take a certain amount of sorting whether at

the source or at the dumping site. Robeson said an additional two or three dumpsters would be needed at each dumpster location to facilitate sorting at the source.

He added, however, that some people would not sort at the source because they do not know the procedure or because they do not care to take the time.

Many people believe that recycling is the answer, but according to Robeson and the Illinois Environmental Protection Agency, few want to take on the cost responsibility of such a project. The IEPA, in its 1987 report, said, "The public sector considers equity issues when making decisions about service provisions. Many times these equity concerns outweigh the concerns of cost or viability."

Robeson agreed that recycling is a good idea, but said that the public is not ready to accept the responsibilities of recycling. "It has to come to the point where economics isn't the question before it can be done," said Robeson.

TUESDAY

© 1989 The TV Listing Group, Inc. Ft. Worth, TX

January 17

	WTWO 2 (2)	WCIA 3 (3)	WAND 4 (7)	ESPN 5 (6)	USA 6 (9)	WGN 7 (5)	AMC 8 (1)	WILL 9 (2)	FAM 10 (7)	DISC 11 (8)	WFTU 12 (5)	TBS 13 (3)
5 PM	News NBC News	News CBS News	Win, Lose ABC News	SportsLook Inside PGA	She-Ra Cartoons	Fact of Life WKRP	1943 (NR)	(CC) Bus Rpt	Bonanza	Trek About	Wall Street Final	(:05) One Day (:35) 9 to 5
6 PM	USA Today Family Feud	News PM Magazine	News Cosby	SportsCenter Motorsports	Miami Vice	Cheers Night Court	MOV: Dragonwyck	MacNeil Lehrer	Our House	Wild Monitor Rendezvous	EIU Connect. News	(:05) Andy (:35) San'd
7 PM	Matlock (CC)	Tour of Duty (CC)	Who's Boss? Roseanne (CC)	Bodybuilding	Murder, She Wrote	College Basketball	1946 (NR)	Nova (CC)	MOV: Dakota LI 1950 (NR)	J. Thompson True Adv.	Sts. San Francisco	(:05) NBA Basketball
8 PM	In Heat of Night (CC)	MOV: Desperate for Love 1989	Moonlighting (CC)	Top Rank Boxing	Law & Harry McGraw		MOV: My Friend Flicka	America Experience 1988		Adventurers	Combat	
9 PM	Midnight Caller		thirtysomething (CC)		Diamonds	News	1943 (NR)	Money in America 1988	700 Club	Prof. Nature Noah's Ark	USA Tonight News	(:20) Vietnam 1982 (R)
10 PM	News Carson	News M*A*S*H	News Love Connect	Lighter Side SportsCenter	Miami Vice (CC)	Hrnoover Hill Street	MOV: Dragonwyck	Bill Moyers MOV: Fashions	Remington Steele	World in Conflict	EastEnders Golden Years	
11 PM	Letterman	USA Today Current Affair	Nightline (CC) Sweethearts	Adventure	Dagnet Edge Night	Blues MOV: Search	1946 (NR)	1934 (NR)	MOV: Home In Melana 1944	The 1930's Victorian	Fugitive	(:20) Vanished 1970
12 AM	Bob Costas	ET Sign Off	Superior Ct. News	American Event	Search Tom'w Insider	1972 (NR)	MOV: My Friend Flicka	Sign Off	(NR)	Wild Monitor Silent Forest	Sign Off	
1 AM	News Sign Off		Sign Off	SportsLook SportsCenter	Madame's Pl Lancer		1943 (NR)		700 Club	Challenge Challenge		
2 AM				Arm Wrestling High School	MOV: Tough of		USA Tonight Hogan	MOV: Hotel Reserve 1944	Varied	Sign Off		
3 AM				Football	Setan 1974 (PG)		MOV: One of Our Own 1975	(NR) Sign Off				(:20) Stogie All Family
4 AM				Getting Fit	Theres Will		(NR)		Bring 'Em Back			(:05) G Acres Gomer

PICTURES

'Scoundrels' top holiday films

BY ROGER JOHNSON
Cinema writer

Welcome back! See any good movies over break? Odds are that whatever you saw was good. This year's batch of Christmas films was a bumper crop of quality products.

The lighter films scored well this year at the box-office. Steve Martin and his inspired lunacy helped to make "Dirty Rotten Scoundrels" the most tasteful comedy this season. He and Michael Caine play two con-men with decidedly different styles of operating. Caine plays the suave gigolo counter to Martin's nickel-and-dime antics. The two run afoul of one another on a train and soon Martin and Caine are competing for the biggest swindle, and the right to operate in the prosperous sea-side setting.

Comedy had no boundaries on the the screen in "The Naked Gun." Leslie Nielsen recreated his role from the short-lived television series "Police Squad." As Detective Frank Drebin, he's an extremely silly cop with an especially straight face who somehow always gets his man. Brought to you by the team that gave the world "Airplane", the new film keeps the same literal humor but avoids becoming redundant in the process.

The eagerly anticipated Dustin Hoffman, Tom Cruise film "Rain Man" made big waves at the theaters this holiday season and garnered a respectable amount of praise following its highly publicized production problems. Hoffman's portrayal of an autistic savant who comes

under the care of his selfish brother has already been earned him nominations from several groups of critics including the Golden Globe awards people.

Both of these mega-stars bring the people to the theater in the first place, but beyond the hype "Rain Man" will be remembered as a successfully touching film about people and the way they shape our lives.

A second star-team film called "Twins" also scored big. Comedy hits come easy for Danny DeVito, but his co-star, mega-man Arnold Schwarzenegger, had never been in anything accept action-adventure films. Those funny lines that Arnold is always muttering are supported here with a genuinely funny performance as one of the twins.

FALL AVAILABILITY

PARK PLACE I

- 1, 2, & 3 Bedroom units
- Fully Furnished
- Central A/C
- Dishwashers
- Balconies
- Laundry & Parking

PARK PLACE II

- Brand new 3 Bedroom units
- Fully Furnished
- Central A/C
- Dishwashers
- Balconies
- Laundry & Parking

(ON 7th ST. ACROSS FROM UNION)
-MICROWAVES AVAILABLE FOR ALL UNITS-

ST. JAMES PLACE (1905 S. 12th ST.)

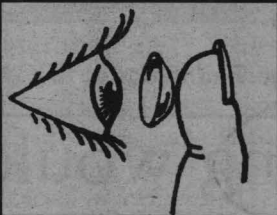
- 1 & 2 Bedroom Fully Furnished Units
- A.C. • Newly Remodeled
- Laundry & Parking

348-1479 (after 1 p.m.)
or (217) 359-0203

Happy 20th Jenny!



Let's belly up to the bar.



EYES EXAMINED

* our standard wear soft contact lenses and glasses from a fashionable selection of frames for everyone with CR39 lenses in the normal power range. Other styles of frames and lenses available at additional cost.

SOFT CONTACT LENS & GLASSES

\$119⁰⁰ Complete*

ALL DESIGNER FRAMES

30%

With Purchase of Lenses

Expires 1/31/89

2 PAIR OF GLASSES

\$119⁰⁰ Complete*

Expires 1/31/89

904 E. LINCOLN, CHARLESTON

SAME DAY SERVICE IN MOST CASES

345-5100

OPTICAL
Visions

WEDNESDAY

© 1989 The TV Listing Group, Inc. Ft Worth, TX

January 18

	WTWO (2, 2)	WCIA (3, 3)	WAND (7, 17)	ESPN (5)	USA (9)	WGN (10, 9)	AMC (11)	WILL (12, 12)	FAM (17)	DISC (28)	WEIU (29, 31)	TBS (30)
5 PM	News NBC News	News CBS News	Win, Lose ABC News	SportsLook NBA Today	She-Ra Cartoons	Fact of Life WKRP	Wife 1940 (NR)	(CC) Bus Rpt	Bonanza	Living Body Earthfile	Wall Street Final	(:05) One Day (:35) 9 to 5
6 PM	USA Today Family Feud	News PM Magazine	News Cosby	College Basketball	Miami Vice	Cheers Night Court	MOV: Ghost and Mrs. Muir	MacNeil Lehrer	Our House	Wild Monitor Spice Life	Coach Corner News	(:05) Andy (:35) San'd
7 PM	Unsolved Mysteries	TV 101 (CC)	G. Pains (CC) Hr Class (CC)	"	Murder, She Wrote	MOV: Shamus 1973 (PG)	1947 (NR)	Nat'l Geographic (CC)	MOV: Mohawk 1956 (NR)	Nature of Thing Nature Thing	Sts. San Francisco	(:05) Night School 1981
8 PM	Night Ct. (CC) My 2 Dads	Equalizer	Wonder Years Hogeyman	College Basketball	MOV: A Streetcar	"	MOV: My Favorite	Frontline 1988 (CC)	"	Vigilante	Combat	(R)
9 PM	Ronald Reagan 30	Wiseguy (CC)	A Fine Romance	"	Named Desire 1951 (PG)	News	Wife 1940 (NR)	Dateline	700 Club	Secrets Secrets	USA Tonight News	(:05) Ruby 1977 (R)
10 PM	News Tonight Show	News M*A*S*H	News Love Connect	NCAA Final 4 SportCenter	Miami Vice	Hrnooner Hill Street	MOV: Ghost and Mrs. Muir	Bill Moyers MOV: Ministry of Fear 1944 (NR)	Remington Steele	World Showcase	EastEnders Golden Years	"
11 PM	Letterman	USA Today Curr. Affair	Nightline (CC) Sweethearts	Road Race Inside PGA	Dragnet Edge Night	Blues MOV:	1947 (NR)	of Fear 1944 (NR)	Movie	Far East	Fugitive	(:05) Shattered
12 AM	Bob Costas 30	ET Sign Off	Superior Ct. News	Ski World NBA Today	Search Tom'w Prime Time	Hawmpsl 1976 (G)	MOV: My Favorite	Sign Off	"	World Monitor Portraits	Sign Off	Room 1966 (NR)
1 AM	News Sign Off	"	Sign Off	SportsLook SportsCenter	Wrestling	"	Wife 1940 (NR)	"	700 Club	Space Race Skwatch	"	(:20) Wait Until Dark
2 AM	"	"	"	Ann Wrestling College	"	USA Tonight Hogan	MOV: Border Cafe 1937 (NR)	"	Varied	Sign Off	"	1967 (NR)
3 AM	"	"	"	Basketball	1 1983	MOV: Newman's	Sign Off	"	Varied	"	"	(:35) All Fami
4 AM	"	"	"	Getting Fit	Mellinger	Law 1974 (PG)	"	"	Bring 'Em Back	"	"	(:05) G Acres Gomer

THURSDAY

© 1989 The TV Listing Group, Inc. Ft Worth, TX

January 19

	WTWO (2, 2)	WCIA (3, 3)	WAND (7, 17)	ESPN (5)	USA (9)	WGN (10, 9)	AMC (11)	WILL (12, 12)	FAM (17)	DISC (28)	WEIU (29, 31)	TBS (30)
5 PM	News NBC News	NewsScope CBS News	Win, Lose ABC News	SportsLook Superbike	She-Ra Cartoons	Fact of Life WKRP	"	(CC) Bus Rpt	Bonanza	Quest for Healing	Wall Street Final	(:05) One Day (:35) 9 to 5
6 PM	USA Today Family Feud	News PM Magazine	News Cosby	SportsCenter School Sport	Miami Vice	Cheers Night Court	MOV: Return of the Fly 1959 (NR)	MacNeil Lehrer	Our House	Wild Monitor Village	Basketball News	(:05) Andy (:35) San'd
7 PM	Cosby (CC) Diff World	Inaugural Gala (CC)	Knightwatch (CC)	College Basketball	Murder, She Wrote	MOV: Frenzy 1972 (R)	MOV: Penny	Ramona CE News Mag.	MOV: Emigrants,	Safari	Sts. San Francisco	(:05) Five Card Stud 1988
8 PM	Cheers Dear John	"	HeartBeat (CC)	"	MOV: A Letter to Three	"	Serenade 1941 (NR)	Soldiers	Part 1 1971 (PG)	Beyond 2000	Combat	(PG)
9 PM	L.A. Law (CC)	Knots Landing (CC)	Grnd. Performance	College Basketball	Wives 1985 (NR)	News	"	Mystery!	700 Club	Prof. Nature Nature Route	USA Tonight News	(:05) Best of the Badmen
10 PM	News Tonight Show	News M*A*S*H	News Love Connect	"	Miami Vice	Hill Street	MOV: Return of the Fly 1959 (NR)	Bill Moyers MOV: City for (NR)	Remington Steele	Sport'g Life Sport'g Life	EastEnders Golden Years	1951 (NR) (:50) Fort
11 PM	Letterman	USA Today Curr. Affair	Nightline (CC) Sweethearts	SportsCenter Yachting	Dragnet Edge Night	Blues MOV: Penny	Conquest 1940 (NR)	MOV: Emigrants,	"	Adventurers	"	Apache 1948 (NR)
12 AM	Bob Costas 30	ET Sign Off	Superior Ct. News	Fishin' Hole SportsCenter	Edge of Night Search Tom'w Code Red	Countdown 1968 (NR)	Serenade 1941 (NR)	Sign Off	Part 1 1971 (PG)	Wild Monitor Rendezvous	Sign Off	"
1 AM	News Sign Off	"	Sign Off	SportsLook SportsCenter	Search Tom'w Code Red	Hogan	"	"	700 Club	Trek About	"	(:35) Destry
2 AM	"	"	"	Thoroughbred College	Blood Feud, Part 2 1983	USA Tonight Hogan	MOV: Millionaires	"	Varied	Sign Off	"	Flies Again 1939 (NR)
3 AM	"	"	"	Basketball	"	MOV: Going In Style 1979 (PG)	In Prison Sign Off	"	Varied	"	"	All Family
4 AM	"	"	"	Getting Fit	Healthy Diet	"	"	"	Bring 'Em Back	"	"	(:05) G Acres Gomer

Weekend Events

At odds for some entertainment? Here's a few events to think about.

Music: Friday night at Ted's, Smokehouse; Saturday, the metal music of Clockwork Orange.

Art: Tarble Arts Center is hosting a Family Sampler on Sunday beginning at 1:30 p.m. Events include a film about watercoloring, a visual treasure hunt, a children's watercolor workshop and a discussion of print making.

Tarble is also hosting their exhibition "Watercolor: Illinois Seventh Bicentennial Exhibition" until Feb. 5.

Movies: At the Will Rogers, My Stepmother Is An Alien with Dan Aykroyd and Kim Basinger. In Mattoon, at the Cinema, Rain Man with Tom Cruise and Dustin Hoffman.

'E.T.' star hooked on coke

NEW YORK (AP) - Thirteen-year-old Drew Barrymore, the lovable little girl in the movie "E.T.," said agents hired by her mother put her in handcuffs to take her back to the hospital after her binge of substance abuse.

In September, she said, she took a break from her initial hospital stay for drug and alcohol use to audition for a play in New York, and broke her 88-day string of sobriety when she snorted cocaine in a nightclub restroom.

She said she then stole her mother's credit card, flew to Los Angeles, snorting more cocaine, and went on a shopping spree.

Her mother hired private agents who handcuffed her and sent her back to the hospital, according to her first-person

account in this week's People magazine.

She said her descent into drug and alcohol abuse began with her rise in fame. "From the time I became famous in 'E.T.' my life got really weird," Barrymore said.

Barrymore was released from her second stay at the drug-and-alcohol rehabilitation hospital shortly before Christmas. She said she drank at age 9, smoked marijuana at 10 and snorted cocaine at 12.

"It was frightening. I was this 7-year-old who was expected to be going on a mature 29," she said. "By the time I was 8 1/2, I felt like I was some abnormal, crazy girl. I could walk up to the door of any nightclub and they'd say, 'Hi, you're that little girl. Come in.'"

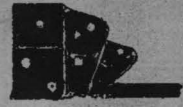
Jerry's Pizza & Pub



345-2844

345-2844

WHY PLAY GAMES?



Call Jerry's for a Great Hot Pizza Delivered to Your House or Room In 30 Minutes or Less!

TRY OUR TWO FOR 1 2 Large Single Ingredient Pizzas \$12.95

Large Single Ingredient Pizza and Quart of Coke **\$6.95**

Delivered 345-2844

Small Single Ingredient Pizza and Quart of Coke **\$5.25**

Delivered 345-2844

Large Two Ingredient Pizza and Quart of Coke **\$8.25**

Delivered 345-2844

Small Two Ingredient Pizza and Quart of Coke **\$6.20**

Delivered 345-2844

WATCH FOR THE DAILY EASTERN NEWS HOUSING GUIDE!

FRIDAY THE THIRTEENTH PARTY

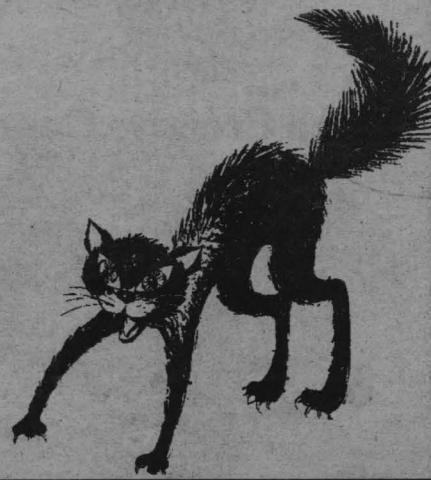
Don't be alone on such a Superstitious Night;

Come to E.L. Krackers and get rid of all your fright!

Featuring: Bloody Mary's and other Killer drinks

BE THERE:

TONIGHT 8-CLOSE



FRIDAY

January 20

© 1989 The TV Listing Group, Inc. Ft Worth, TX

	WTWO (2)	WCIA (3)	WAND (7, 17)	ESPN (8)	USA (9)	WGN (10, 11)	AMC (12)	WILL (12, 13)	FAM (14)	DISC (15)	WEIU (16, 17)	TBS (18)
5 PM	News	News	Win, Lose	SportLook	She-Ra	Fact of Life	Bride 1949	(CC) Bus Rpt	Bonanza	Futurescan	Wall Street	(:05) One Day
:30	NBC News	CBS News	ABC News	Bowling	Cartoons	WKRP	(NR)				Final	(:35) 9 to 5
6 PM	USA Today	News	News	SportsCenter	Miami Vice	Cheers	MOV: Appaloosa 1966	MacNeil Lehrer	Our House	World Monitor	Basketball	(:05) Andy
:30	Family Feud	PM Magazine	Cosby	Speedweek		Night Court				Silent Forest	News	(:35) Sant'd
7 PM	Father Dowling	Beauty & the Beast (CC)	Strangers (CC)	SuperBowl 23	Murder, She Wrote	MOV: Last Dragon 1985	(NR)	D.C. Week	MOV: Emigrants,	World in Conflict	Sts. San Francisco	(:05) NBA
:30	Mysteries (CC)		Full House	Best of NFL				Wall St	Part 2 1971 (PG)		Basketball	
8 PM		Dallas (CC)	Belvedere (CC)	American Events	Hitchcock	(PG13)	MOV: I Was a Male War	Great Performances		American Album	Combat	
:30			Top of Us (CC)		Bay Bradburv							
9 PM	Miami Vice	Falcon Crest (CC)	20/20 (CC)	Spirit of Adv.	Hitchhiker	News	Bride 1949	1988 Castle	700 Club	Space Race	USA Tonight	(:20) Belton
:30	(CC)				Warewolf		(NR)			Skywatch	News	NBA Basketball
10 PM	News	News	News	Sport Bus.	Miami Vice	Hmooner	MOV: Appaloosa 1966	Bill Moyers	Remington Steele	Ark on Move	EastEnders	
:30	Inaug. Ball	M*A*S*H	Love Connect	SportsCenter		Hit Street		MOV: Lady In		Gold Edge	Previews	
11 PM	Tonight Show	USA Today	Nightline (CC)	Wrestling	Camp Midnight	Blues	(NR)	the Dark 1944 (NR)	MOV: Emigrants,	Wild Orphans	Fugitive	(:45) In NBA
:30		Curr. Affair	Sweethearts			MOV: North			Part 2 1971 (PG)	World Monitor	Sign Off	(:15) Tracks
12 AM	Letterman	ET	Superior Ct. News	Water Skiing		Dallas Forty 1979 (R)	MOV: I Was a Male War	(:15) Sign Off		Spice Life		(:15) Tracks
:30		Sign Off			MOV: Devil's				700 Club	Golden Roads		(:15) Tracks
1 AM	Friday Night Videos		Sign Off	SportsLook	Nightmare 1972	Make Happen	Bride 1949 (NR)					(:15) Tracks
:30				SportsCenter					Praise the Lord	Sign Off		(:15) Tracks
2 AM	News			Speedweek		USA Tonight	MOV: Bamboo Blonde 1946					(:15) Tracks
:30				Arm Wrestling	MOV: Dread	Gov't Grants						(:15) Tracks
3 AM	Sign Off			Pro Tennis	Naught Rivals	MOV: Lamp at Midnight 1966	(NR)	Sign Off				(:15) Tracks
:30									Bring 'Em Back			(:15) Tracks
4 AM				Inside PGA								(:15) Tracks
:30				NBA Today	Camp Midnight							

SAT, JAN 14 - Weekdays - FRI, JAN 20

© 1989 The TV Listing Group, Inc. Ft Worth, TX

	WTWO (2)	WCIA (3)	WAND (7, 17)	ESPN (8)	USA (9)	WGN (10, 11)	AMC (12)	WILL (12, 13)	FAM (14)	DISC (15)	WEIU (16, 17)	TBS (18)
5 AM	(:15) Edit'n		(2:15) Varied	Body Motion	Varied	Varied	(4:45) Movie		Today	(2:00) Sign Off		CNN
:30	NBC News			Nation's	Varied	Faith 20			J. Robinson			Scoby Doc
6 AM	Today	J. Swaggart	ABC News	Business	Cartoon Express	Hogan		(:45) With	Superbook		Varied	T & J
:30		CBS News		Varied		Jem			Dry Gulch		World Bus: Rpt	
7 AM		CBS This Morning	Good Morning America	SportsCenter	She-Ra	Bozo		Body Efect.	Father Knows		Varied	(:05) Hbilly
:30					Cartoon Express			Cpt Kangaroo	Hazel		Varied	(:35) B'wch
8 AM	Hollywood Sq			Varied		Smurfs	Off the Air	Sesame Street	Our House	Varied	Ask Washington	(:05) Little
:30	Newlywed			Varied		Gumby				Varied		House
9 AM	Varied	Varied	Varied		Riptide	Alice		ITV	700 Club	Varied	Varied	(:05) Movie
:30	Varied					Bunker's Pl.				Varied		
10 AM		Varied		Getting Fit	Varied	Charlie's Angels	Off the Air			Varied	Varied	
:30				Workout					Straight Talk	Varied		
11 AM				Body Motion	Hot Potato	Geraldo		Mr. Rogers		Varied	Market Report	(:05) Perry
:30				B'shaping	Percentapes			Sesame Street	Varied	Varied		Mason
12 PM			All My Children	Varied	Chain React	News			Celab. Chets	Varied	EastEnders	(:05) Movie
:30				Varied	Bumper Stump			ITV	Flying Nun	Varied	Varied	
1 PM			Varied		Name Tune	A. Griffith			Here Come	Varied	Varied	(:35) Varied
:30					Face Music	D. Van Dyke			Brides	Varied	Varied	(:05) T & J
2 PM			General Hospital		Press Luck	Beaver	Movie	Varied	Campbells	Varied	Varied	(:35) Flint
:30					TicTac Dough	Ghostbusters			Green Acres	Varied	Varied	
3 PM	Varied	Oprah! Winfrey	People's Ct. Judge	Varied	High Rollers	Bugs Bunny		Mr. Rogers	Hazel	Varied	Varied	(:05) Flint
:30					Pyramid	Vytor	Varied	321 Contact	Father Knows			(:35) Brady
4 PM	Superior Ct.	Geraldo	Donahue		Dance Party USA	Varied		Square One	Big Valley	Varied	FNN	(:05) Muns.
:30	People's Ct.			Varied		Fun House		Sesame Street		Varied		(:35) L & S
5 PM	News	Varied	Win, Lose	Varied	She-Ra	Fact of Life			Bonanza	Varied	Wall Street	(:05) One Day
:30	NBC News	CBS News	ABC News	Varied	Cartoons	WKRP		Bus Rpt		Varied	Final	(:35) 9 to 5

Add-drops horrify student

BY MATT MANSFIELD
Staff editor

You know what really makes me mad? The inane way the spring calendar year has begun.

In what we think is stupidity, the administration decided to start the new semester three days before a long holiday. Well, actually it's only a three day weekend, but anything longer than a day off constitutes a long holiday on a college campus.

With add/drops on the first three days of class, it is unlikely many students will show up for classes -- or even know what they're taking. What a great move it was to schedule a long weekend following this administration imposed hiatus from classes. Long add/drop lines seem to warrant this type of holiday and who am I to complain?

Add/drops is another thing that bothers me. I showed up at my "scheduled time" only to wait another hour before gaining entrance to the hallowed add/drop area.

Once inside the sacred room, I scrambled to the nearest advisor and to another, and still one more. Happy I was able to talk to living, breathing people -- though some seemed quite computer-like -- and worried that things were happening too quickly, too easily, I headed for the exit.

I thought my business was finished, it was not. A stern woman told me an advisor made a mistake on one of my add slips. I would have to return to the dreaded advisement table. One glance in the direction of my advisor and I knew I would be in line for at least another 20 minutes.

Silly thoughts ran through my head as I trudged toward the table. I thought I might try butting up in line, but everyone looked as angry as I did. I was unprepared for a brutal confrontation, so I went to the back of the line.

While in line I thought about making a break for it. If I could only get past the stern lady at the exit, I thought, everything else will fall in place.

Intently, I plotted my move. I'll hide the mixed-up add slip and go on through. Surely someone will catch the error later. I made my move. I got out without her remembering me. Great, I thought.

I was almost out of the Union when the thought of me in class popped into my head. The 10 day roster had just come out and I wasn't on it. God No!

The sheer horror of it all struck me and needless to say I went back to the add/drop line.

BY MATT MANSFIELD
Music writer

There is the familiar music and orchestration. There is the sonic brilliance. There is the customary enigmatic artwork. There is not Roger Waters.

Pink Floyd's latest outing is the live double-set *Delicate Sound of Thunder* -- the second release since Waters' much heralded departure.

Roger Waters was the driving force behind Pink Floyd from 1986 until 1982 and many people felt that without him Pink Floyd would cease to exist. Not so, said David Gilmour who decided -- along with Nick Mason and Richard Wright -- to release the first post-Waters album, *A*

Momentary Lapse of Reason, last year.

The remaining members of Pink Floyd have made an interesting decision by releasing a live set. Bands do go on without their frontmen. Witness Genesis after Peter Gabriel, Van Halen after David Lee Roth and Pink Floyd after Roger Waters. The delicate decision a live album presents, however, is memories because "live" must include old hits, Roger Waters' hits.

The set is full of Pink Floyd classics. Included are "Time," "Money," "Wish You Were Here" and "Comfortably Numb." Of course the set is populated with the recent hits from *A Momentary Lapse of Reason*, but the vintage Floyd --

and how vintage it really is -- is what matters here. Roger Waters is so prevalent a force on songs like "Comfortably Numb" it is difficult to listen to them without him -- even though the band admittedly does a credible job.

Still, David Gilmour should be credited. This is one of the finest live sets around and Gilmour produced it. The recording itself is virtually flawless -- as it should be considering Pink Floyd's reputation in that arena.

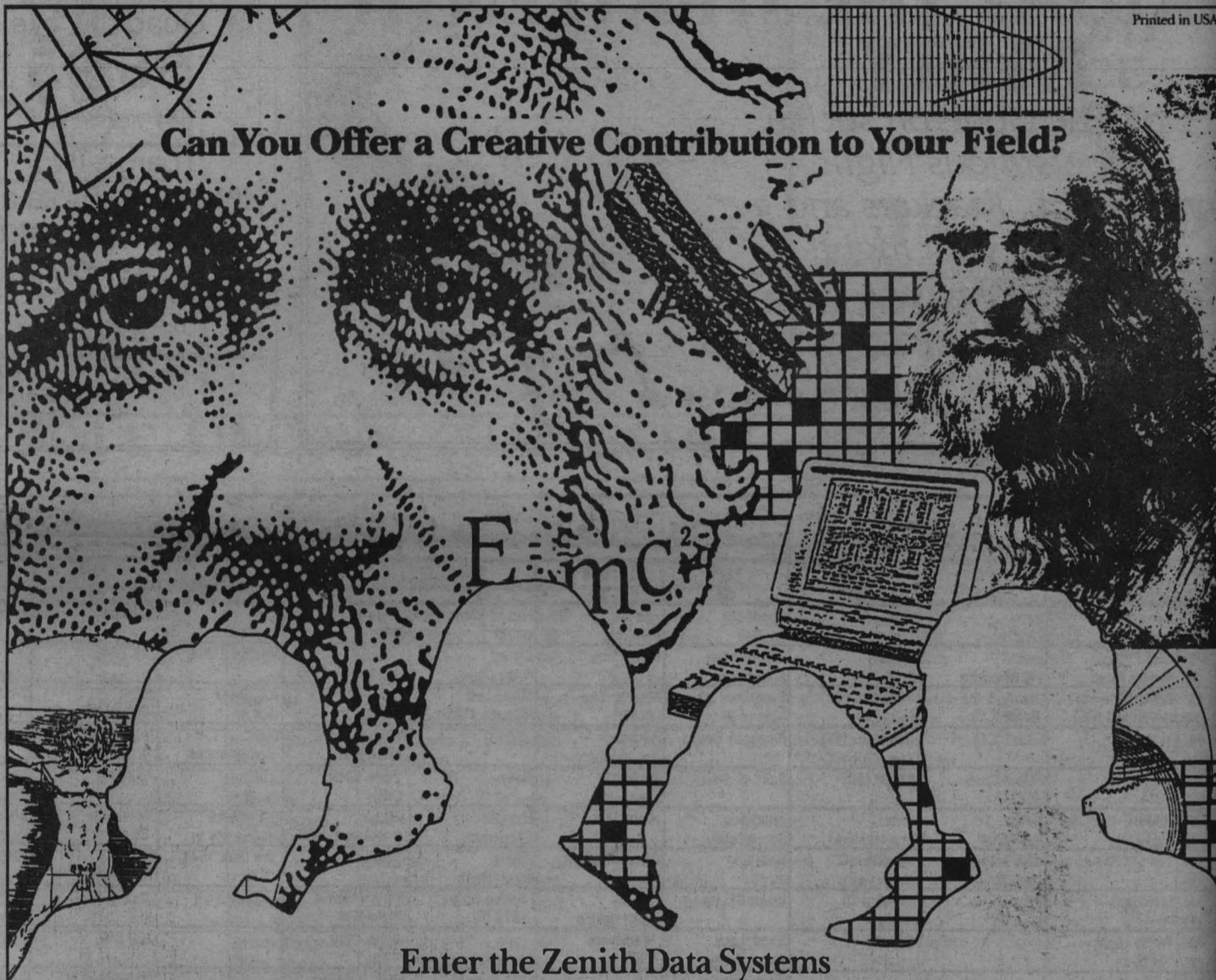
Despite the Roger Waters shadow, some of the songs are actually quite fine. Take "Wish You Were Here," for example, which sounds great. A different slant is sometimes good because it keeps the old songs

fresh somehow. Don't expect exact duplication of the studio sound because you won't receive it and in some cases that's good.

As a whole the set is good for those who don't consider the whole post-Waters deal blasphemy. Pink Floyd may have been better served if they had released this live project as a couple of albums from now because with each subsequent release after Waters' departure the band only proves it can survive. Falling back on the old Floyd magic is not a good barometer of success after Waters, but just remember Roger Waters wasn't the first Pink Floyd frontman, Syd Barrett was.

SOUNDS

'Thunder' credible, but lacks Water's wave



Can You Offer a Creative Contribution to Your Field?

Enter the Zenith Data Systems

MASTERS of INNOVATION COMPETITION

Win a \$5,000* Zenith Computer System.

We're searching for tomorrow's innovators.

If you've developed or used software or hardware--that is compatible with Zenith Data Systems products--to creatively address a problem or task in your field of study, we want to hear from you.

You could win a \$5,000* Zenith Data Systems computer system for yourself, \$5,000* worth of computer equipment for your college campus given in your name, and national recognition from your peers.

For More Information And Official Rules, Call 1-800-553-0301.

Competition Ends March 1, 1989. Void Where Prohibited.



ZENITH data systems

THE QUALITY GOES IN BEFORE THE NAME GOES ON*