

Eastern Illinois University

## The Keep

---

2010 Show Programs

2010

---

2010

### Annie

Little Theatre on the Square

Follow this and additional works at: [https://thekeep.eiu.edu/little\\_theatre\\_2010\\_programs](https://thekeep.eiu.edu/little_theatre_2010_programs)

---

Member

naa mt

NATIONAL ALLIANCE  
for MUSICAL THEATRE

**John J. Stephens**  
Executive Director

THE LITTLE THEATRE  
**SQUARE**  
ON THE SQUARE  
ON THE SQUARE  
**ARE**  
ON THE SQUARE  
THE LITTLE THEATRE



**Tralen Doler**  
Artistic Director

PRESENTS



# Annie

July 21-August 1, 2010



This program is partially supported by a grant from the Illinois Arts Council.

Named a Partner In Excellence by the Illinois Arts Council.





# KC Summers

*We're Family*



**GMC**



mazda



*Visit Us at Either of Our Two Convenient Locations:*

*117 S. 19th Street*

*Mattoon, IL*

*Phone: 217-234-8863*

*2404 Lakeland Blvd.*

*(South Route 45)*

*Mattoon, IL*

*Phone: 235-4136*

## *Cheers to A Great Summer Season!*

*Thanks to The Little Theatre On The Square For Bringing Joy, Tears  
and Laughter to Central Illinois for the Last Fifty-Three Years!*

*From Your Family at KC Summers*

# **kcsommers.com**





*proudly supports the  
Little Theatre on the Square  
and the Sullivan community*

**We produce high-performance drive systems  
for the lawn and garden market.**



**Corporate Headquarters**

1411 South Hamilton Street  
Sullivan, Illinois

Phone: (217) 728-2581  
[www.hydro-gear.com](http://www.hydro-gear.com)

Sullivan, IL ♦ Princeton, KY ♦ Tongeren, Belgium ♦ Shanghai, China

GUILT-FREE SHOPPING  
**TANGERstyle**



**SHOP GUILT-FREE**  
**Save 30% to 70% at Over**  
**40 Brand Name Outlets**

Polo Ralph Lauren Factory Store

Nike Factory Store

Carter's

Stride Rite

Gap Outlet

Tommy Hilfiger

dressbarn

Jockey

Coldwater Creek

Bath & Body Works

and more



*free coupon book*

Bring this ad to the Tanger Visitor Center for a FREE Coupon Book worth hundreds of dollars in additional savings.

Expires 12/31/10 Code 1874510

Find us on



**BEST PRICE  
GUARANTEE**

**SAVE EVEN MORE**  
[tangeroutlet.com](http://tangeroutlet.com)

**Tanger**Outlets

**Tuscola, IL**

**I-57, Exit 212 on Route 36**

**(217) 253-2282**

# Auditions



# NARNIA

## THE MUSICAL

**AUDITIONS • JULY 26 AND 27**  
**6:00pm – 9:00pm**

**Richland Community College Shilling Center**

Based on "The Lion the Witch and the Wardrobe" by C.S. Lewis

Book by Jules Tasco | Lyrics by Ted Drachman | Music by Thomas Turner

[richland.edu/narnia](http://richland.edu/narnia)



RICHLAND BALLET PRESENTS

# The Nutcracker

AUDITIONS

September 11th and 12th  
2:00pm - 4:30pm

RICHLAND COMMUNITY COLLEGE  
SHILLING CENTER

[richland.edu/cpe/dance](http://richland.edu/cpe/dance)





The Little Theatre is proud to announce the opening of  
**The Second Act Gallery**

14 N. Main Street (Across From Jibby's)

Featuring hand made creations including - artwork, hand crafted furniture, jewelry, Astoria Candle Company soy wax candles, blown glass creations, paintings, gifts and more.

**Summer Hours:**

**Tuesday -Friday 10:00am - 8:00pm**

**Saturday - 10:30am - 2:00pm**

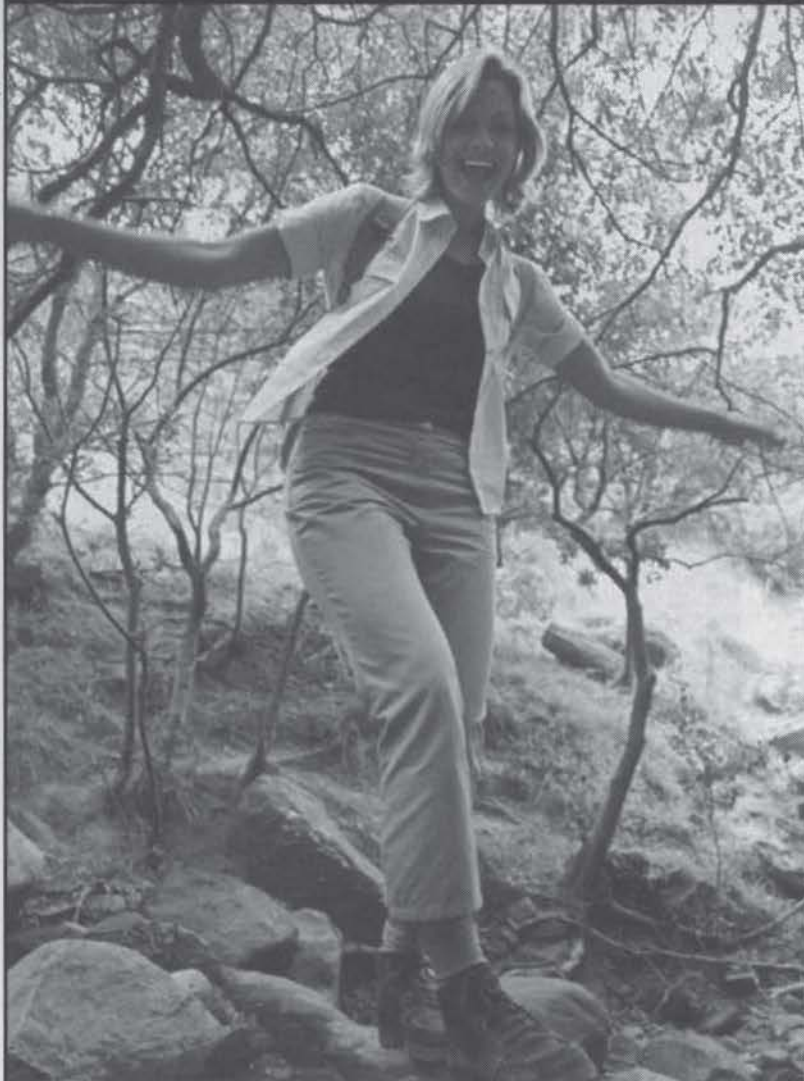
**Sunday - 12:00pm - 2:00 pm**



**SECOND  
ACT**

**gallery**

# Need to Get Back your Natural Balance?



We work together with women and their health care providers to customize **Bio-Identical Hormone Replacement Therapy** - which is essential for restoring a natural balance.

*Ask our compounding pharmacists for more information.*

## THE SULLIVAN PHARMACY



102 East Harrison • Sullivan, IL 61951

*Located on the northeast corner of square in Downtown Sullivan*

**(217) 728-2331**

**Toll Free: 1-800-422-2364**

**Fax: (217) 728-2223 • E-mail: [tsp@wireless111.com](mailto:tsp@wireless111.com)**

*Tony Jones, R.Ph. • Carolyn J. Jones, R.Ph.*

**Visit us online at [www.thesullivanpharmacy.com](http://www.thesullivanpharmacy.com)!**



Tate & Lyle  
is proud to  
play a part in  
supporting  
**The Little  
Theatre On  
The Square.**

**TATE & LYLE**

CONSISTENTLY FIRST IN RENEWABLE INGREDIENTS

[www.tateandlyle.com](http://www.tateandlyle.com)

# Encore!



*Abundance of Life Health*

*and Wellness Center*

**Vegetarian Meals Available**

**Jean's Therapeutic Massage**

[www.jeanstherapeuticmassage.web.com](http://www.jeanstherapeuticmassage.web.com)

**903 A West Jackson St Sullivan, IL 61951**

**Phone: 217 728-4638**

[www.abundanceoflifehealth.webs.com](http://www.abundanceoflifehealth.webs.com)

[jt.titus@yahoo.com](mailto:jt.titus@yahoo.com)

APPLAUDING  
THE PAST.  
DIRECTING  
THE FUTURE.



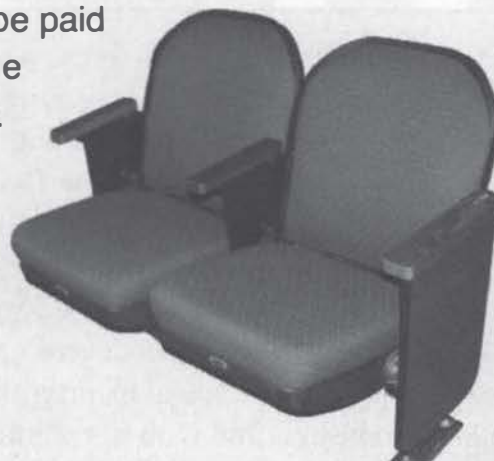
## We have a SEAT for you!

We are proud of the quality of our productions and we hope you are too. And, we are proud of the renovation of the theatre that was completed in 2004.

Over 100 patrons have stepped forward to *Adopt-A-Seat* to help us with the cost of capital improvements so that we can continue to showcase our productions in a pleasant, comfortable environment.

Please consider joining this group and *Adopt-A-Seat* in your name or the name of someone you wish to honor or remember. If you commit to donating \$1,000 to our *Adopt-A-Seat* campaign, we will place your name on a seat on the seating chart plaque in the theatre lobby. If you wish, your donation may be paid over a three year period, but your name will be forever inscribed on the plaque.

Most importantly, we hope you will continue to attend our productions and tell your friends about The Little Theatre On The Square!





## Greetings From The Executive Director

Who wants to take a trip with us to New York City? If you answered yes to this, make sure you talk to Joel Booster at the concession stand during intermission. We are planning this trip for October 6-11, 2010. The cost is \$1,500 per person and includes round trip transportation, 3 Broadway shows, backstage tour of **Billy Elliott**, sight seeing tours of New York City, All evening meals, Hotel accommodations in New York City and an Alumni meet and greet cabaret featuring many of the people who got their start at The Little Theatre who have moved to New York to make it big.

You can learn so much more about what we are planning for the future at The Little Theatre by becoming a Friend of The Little Theatre On The Square. More information about this program is listed in the back of the playbill. You can join the Friends of The Little Theatre for as little as \$100 per year.



I hope you enjoy the show today and look forward to the rest of the entire season at The Little Theatre. We are going to knock your socks off time and time again. Just wait for it. If you haven't become a season subscriber, do so for our Fall/Winter/Spring season and for our 2011 Summer season which will blow you away.

Thank you for visiting us and I hope to see you back in that seat real soon!

John J. Stephens  
Executive Director

Mr. Stephens was appointed to the position of Executive Director on October 21, 2008 after spending 3 seasons as Director of Marketing for The Little Theatre On The Square. John spent 10 years with The Decatur Park Singers serving as Road Manager and the Director of The Decatur Young Park Singers. From 2001 until 2006 John taught at St. James Catholic School in Decatur, IL and served as head choreographer for the Lincoln College Express in Lincoln, IL during that time as well. John was born and raised in Glasford, IL and graduated from Lincoln College with his Associates degree and attended Millikin Univeristy majoring in Vocal Music Education. John currently resides in Sullivan and owns and operates the Harrison Street Inn with his partner Timmy Valentine.



# ARROWS

## BAR-N-GRILL

**DINE IN OR  
CARRY OUT**

**FULL MENU  
Steaks  
Sandwiches  
and MORE!**



**Open Tuesday - Thursday  
Lunch 11am - 2pm, Dinner 4pm - 8pm  
Friday Lunch 11am - 2pm, Dinner 4pm - 9pm  
Saturday's 11am - 9pm**

**FRIDAY AND SATURDAY OPEN TIL 1AM WITH LIVE BANDS & DJ'S**  
**16 North Washington Street, Sullivan - Reservations Accepted Phone 217-728-4036**



# WRY

## PIZZERIA

**10 East Harrison Street Sullivan, IL Phone: 217-728-7200**



## Tralen Doler Artistic Director

Tralen Doler, a New York based director and choreographer, proudly enters his first season as Artistic Director of The Little Theatre On The Square. He has directed and choreographed productions all over the country including National Tours of *A Christmas Carol* starring Barry Williams, Jeff Conaway, and Jackee Harry, and *The Producers* for CR Productions, as well as the PBS special *A Century of Broadway* starring opera legend Fredrica von Stade.

Over the past four seasons he has helmed the Little Theatre productions of *La Cage aux Folles*, *Guys and Dolls* starring Doug Wilson, *A Christmas Story*, *Singin' in the Rain*, and *The Best Little Whorehouse in Texas*.

Tralen served as the resident director for the Cohoes Music Hall in Cohoes, NY where he has directed over 30 shows including *A Chorus Line*, *Anything Goes*, *Thoroughly Modern Millie*, and *Dreamgirls*. His production of *La Cage aux Folles* for the Arizona Broadway Theatre earned him a Arizoni Award for Best Director and Choreographer. As an Artistic Associate of the Actors Repertory Theatre he directed critically acclaimed productions of *Born Yesterday*, *The Drawer Boy*, *Moonlight and Magnolias*, and *Rabbit Hole*.

A passionate activist, Tralen has also directed benefits for The New Jersey AIDS Alliance and Broadway Cares Equity Fights AIDS working with such stars as Terri White, Julie Wilson, Lea Michelle, Andrew Lippa, and Ashley Brown.

Tralen is excited to be a part of 53 years of history at The Little Theatre and to help guide it into the next decade.

This page is sponsored by

**Browne's Pharmacy**

121 West Springfield Road Arcola, IL 61910 - (217) 268-3838



**Central Illinois Physical Therapy**

217-345-1245  
Mattoon

217-728-8100  
Sullivan



**Rebuild Your Life  
With A Personal Touch  
From The Professional  
People You Know!**



**Hagen's**  
Family Pharmacy

Conveniently located on the square

Monday through Friday, 8 a.m.-6 p.m.  
Saturday, 9 a.m.-4 p.m.

Bob Hagen, R.PH.  
Cathy Hagen R.PH

**8 E. Harrison Street  
Sullivan, IL 61951**

*Proud Supporter of  
The Little Theatre  
On The Square*

**OPEN**  
**MON - SAT 11AM - 1AM**  
**SUN 11AM - 12AM**



**BUFFALO WILD WINGS**  
GRILL & BAR

**124 Dettro Drive in Mattoon, IL Phone: 217-258-9464**



**FRESH FLOWERS  
AND  
VEGETABLES**

**GREENHOUSE  
AND  
PUMPKINS**



**BUXTON'S  
GARDEN & FLOWER SHOP**



Cast and Crew  
**HOTSPOT**  
LITTLE THEATRE  
RECOMMENDED



**STEVE and PAULA BUXTON**  
Sullivan, IL 61951  
Phone: 217-728-7993  
[www.buxtonsgardenfarm.com](http://www.buxtonsgardenfarm.com)



**HICKORY RIVER!**  
SMOKEHOUSE



**REAL TEXAS BARBECUE**



Cast and Crew  
**HOTSPOT**  
LITTLE THEATRE  
RECOMMENDED

Store Hours: Monday - Saturday 11am - 9pm, Sunday 11am - 8pm  
2330 South Mt. Zion Road, Decatur, IL Phone: 217-864-1864

[www.hickoryriver.com](http://www.hickoryriver.com)  
[mattw@hickoryriver.com](mailto:mattw@hickoryriver.com)



# DICKS PHARMACY

MODERN PHARMACY - HOMETOWN DRUGSTORE

Bruce D. Wood, R. Ph. · Martha Jones, R. Ph.

118 S. Vine (Downtown) Arthur, IL 61911

Hours: Mon.-Fri.: 8-6, Sat.: 8-5 Phone: (217) 543-2913



Member FINRA/SIPC



**Gary L. Swearingen, CFP®**  
Branch Manager  
First Vice President - Investments  
**Jennifer Nay**  
Client Associate

Wells Fargo Advisors, LLC  
6029 Park Drive, Suite B  
Charleston, IL 61920  
Tel 217-345-9500  
Fax 217-345-9520  
Toll Free 888-527-2212  
[gary.swearingen@wellsfargoadvisors.com](mailto:gary.swearingen@wellsfargoadvisors.com)

## *Banking — With your friends and neighbors*



We would love for you to say that **First Neighbor Bank** is your bank. We welcome your visit at any of our locations to open a new account today.

*“Superior financial services  
with a local touch”*

**Toledo**  
217.849.2701

**Greenup**  
217.923.3125

**Casey**  
217.932.4048

**Neoga**  
217.895.5800

**Charleston**  
217.345.4060

**Newman**  
217.837.2491



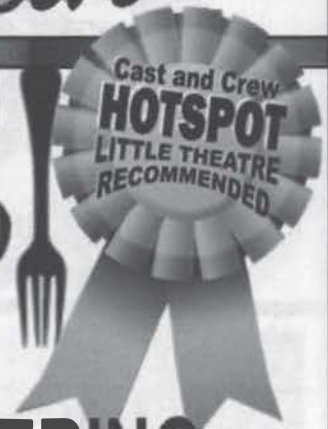
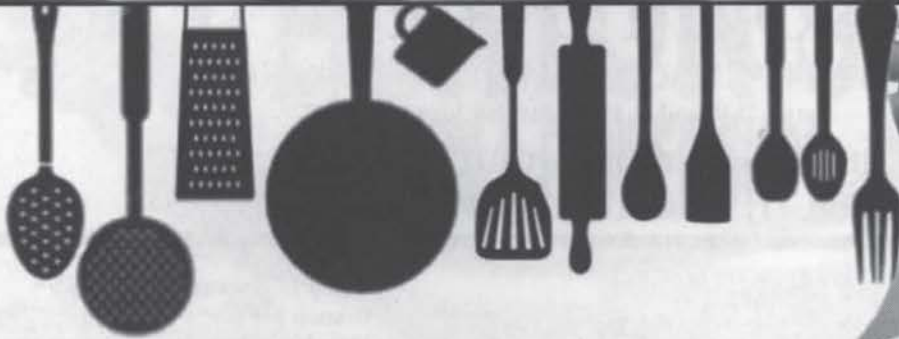
First Neighbor Bank, N.A.

[www.firstneighbor.com](http://www.firstneighbor.com)





# What's Cookin'



## RESTAURANT and CATERING

LOCATED AT 409 - 7th STREET IN THE HEART OF CHARLESTON, ILLINOIS

Phone: 217-345-7427 [www.whatscookin.info](http://www.whatscookin.info)

*The full service family restaurant and local favorite!*



OPEN  
7 DAYS A WEEK  
11AM - 10PM



**Dine In, Carry Out & On Time Delivery**  
402 South Hamilton Street, Sullivan, IL 61951 Phone: 217-728-2373



Proud supporter of The Little Theatre



Located in the Coles Business Park  
6009 Park Drive  
Charleston, IL 61920  
[WWW.HET-ATTORNEYS.COM](http://WWW.HET-ATTORNEYS.COM)  
217-639-7800



*Jme*  
JAMIE McDONALD  
RR2 Box 217  
Shelbyville, IL  
[jmcphoto@yahoo.com](mailto:jmcphoto@yahoo.com)  
217.259.8585

John Pruitt  
**SULLIVAN**  
AUTO BODY  
800-335-3990 TOLL FREE  
(217)728-4731  
WEST RT. 121  
SULLIVAN, IL



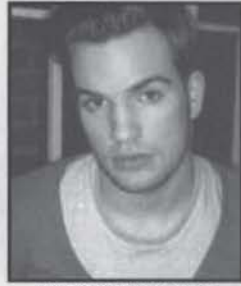
**SARAH BUSH  
LINCOLN**  
HEALTH SYSTEM

Trusted, compassionate care.

# The cast of Annie



KYLE ADAMS



JACK BARTHOLET



CHRIS BLEM



GALEN CRAWLEY



JERRY CHRISTAKOS\*



LIZETTE CRUZ



JOSH DAWSON



ZACHARY GRAY



HEATHER DORE'JOHNSON



THERESE KINCAIDE



ALEXIS HINNEY



BOBBI KOTULA\*



ANDREW KRUEP



JEROME LOWE



SKIP LUNDBY\*



RAMAAD MORRIS



CLINTON SIERWOOD



JANIE WALLACE



MARISHA WALLACE



DARCY WRIGHT

This page is sponsored by  
**The Briarwood**  
917 W. Harrison Street - Sullivan, IL - 217-728-2725  
[www.briarwoodstore.com](http://www.briarwoodstore.com)

# The Orphans



CAROLINE ADAMSON



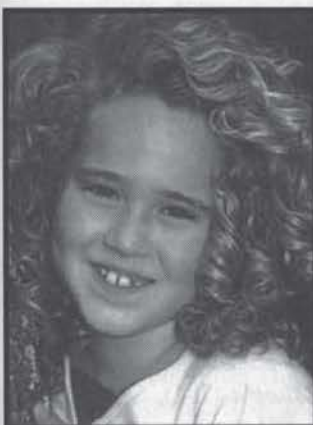
EMILY BACINO ALTHAUS



KAITLYN CURRY



MADISON EASTON



CJ FAM



HALEY FATHEREE



MADISON MARTIN



LAUREN MELLOTT



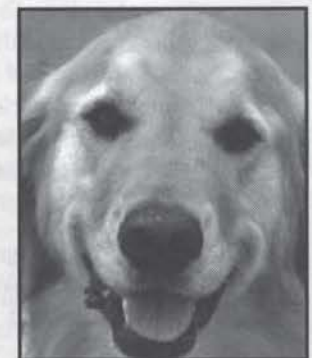
ARYN ROUSSER



SOPHIE SCHWALBACH



MINDIE WEAVER



MADIEMOYER



## Who's Who

**KYLE ADAMS** is proud and excited to return to Sullivan for a second summer on the square. As a member of the 2008 company, Kyle appeared in *Cabaret* (Ernst Ludwig) and *All Shook Up* (Sheriff Earl), among others. Recent credits include: *Joseph and the Amazing Technicolor Dreamcoat* (Simeon) at the Fireside Theatre, the world premiere of *Jeeves in Bloom* (Gussie Fink-Nottle) with Artists Ensemble Theatre, and understudying and performing in *The 25th Annual Putnam County Spelling Bee* at The Marriott Lincolnshire. Kyle is a Graduate of Rockford College's Musical Theatre program. Love and thanks to John and Tralen, family, and his other (and better) half, Amanda.

**JACK BARTHOLET** A senior BFA Musical Theatre major at The Chicago College of Performing Arts, Jack is thrilled to spend this summer with TLTOTS. Chicago audiences have seen him at both The Auditorium Theatre and Apple Tree Theatre. Within the year projects include: *Pirates of Penzance* (Frederic), *All Shook Up* (Dean), and *Brigadoon* (Charlie u/s) with Rocky Mountain Repertory Theatre and *Sweet Charity* (John) with Roosevelt University. Additional credits include: *Ragtime* (Younger Brother) *Children of Eden* (Cain) and *Titanic* (Frederic) with The Players Guild Theatre and several seasons with Mercury Summer Stock where he appeared in *Big River*, *Babes in Arms*, and *Jane Eyre*. He would like to extend warm thanks to Tralen, John and Miki as well as his family and tribe for support and encouragement. Enjoy the show and "Wish me luck, the same to you".

**CHRIS BLEM** a native of Tampa, Florida, his previous credits include *Into The Woods* (The Baker), *Hair* (Margaret Mead), *How To Succeed* (Mr. Twimble), *The Mikado* (Ko-Ko), *The Human Comedy* (Father Macauley) and *Sesame Street's Elmo and the Bookaneers* (The Pirate Captain). Chris has performed with the Boston Pops as well as the Fort Wayne Philharmonic in their Christmas Spectacular. He is a 2006 YoungARTS winner in theatre and has studied at both The Broadway Theater Project and Interlochen Arts Academy. Chris is currently working towards his B.F.A. in Musical Theatre at the University of Cincinnati College-Conservatory of Music. ChrisBlem.com

**GALEN CRAWLEY** graduated from the Conservatory of Theatre Arts at Webster University in May, and she is extremely excited to be spending her post-grad summer in Sullivan! Recent credits include *Company* (Marta), *Angels in America* (The Angel), *Dancing at Lughnasa* (Chris) and *Les Miserables*. (Eponine). Many thanks to her family for supporting her wherever she goes, her sister for always making her laugh, and her friends for continuing to listen to her long, rambling stories. Class of '10 – QUACK, QUACK, QUACK!

\*Members of Actors' Equity Association, the union of Professional Actors and Stage Managers in the United States.

**JERRY CHRISTAKOS\*** Broadway/West End: *Kiss of the Spiderwoman* (Gabriel); Off-Broadway: *Forbidden Broadway: Special Victim's Unit*; National Tours: *Les Miserables* (Enjolras), *Andrew Lloyd Webber: Music of The Night* (Featured Soloist), *A Swell Party: The Cole Porter Songbook* (Featured Soloist). Regional credits: Goodspeed Opera House: *1776* (Reverend John Wither- spoon) and *Wonderful Town*; Actors' Theatre of Louisville/Florida Stage: *Hot 'N' Cole*; Coeur d'Alene Summer Theatre: *La Cage Aux Folles* (Zaza/Albin), *The Producers* (Roger Debris), *Dames at Sea* (Henessey/The Captain); Cohoes Music Hall: *42nd Street* (Julian Marsh), *Gypsy* (Herbie), *Ragtime* (Tateh), *Kiss Me Kate* (Fred/ Petruchio), *La Cage Aux Folles* (Georges). Nightlife Award winner for writing and starring in *Lovely: A Musical Comedy* (Christy Vann deCamp).

**LIZETTE CRUZ** is beyond thrilled to be making her mainstage debut at the Little Theatre on the Square! A cast member of the TLTOTS S.T.A.R Touring productions of *Schoolhouse Rock Live!* and *Frankly Ben* for the Spring 2010 semester, she is no stranger to the square. Lizette received her BM in Musical Theatre from Oklahoma City University and studied under the prestigious, Florence Birdwell. Favorite credits include *Urinetown* (Pennywise), *I Love You, You're Perfect...* (Woman 2), *Man of La Mancha* (Aldonza), and *Little Shop of Horrors* (Crystal). Many thanks to her family and friends for their never-ending love and support.

**JOSH DAWSON** is extremely excited to be joining TLTOTS family this season. He is joining us after his training at the University of Cincinnati College Conservatory of Music, where he studied Musical Theater. Favorite credits include *Oklahoma* (Jud), *Seven Brides for Seven Brothers* (Adam), and the musical adaptation of *Two Gentlemen of Verona* (Valentine). He would like to Thank God, His family and friends for be his rock and amour. His loving Bubba, and Chris K. for all their many lessons. And a special Thanks to Tralen and John for welcoming him into their family. Joshadawson.com

**ZACHARY L GRAY** is so excited to return to The Little Theatre stage. Past credits here include the 2009 summer season as well as choreographing the S.T.A.R Tour's *Schoolhouse Rock Live!*, *Frankly, Ben!* and *A Year with Frog and Toad*. Other regional: *Joseph...Dreamcoat* (Benjamin) at Fireside Theatre, *High School Musical* at Marriott Lincolnshire, *Meet Me in St. Louis* at Broadway Palm West, *The Snow Queen* directed by Frank Galati at Victory Gardens, and *The Music Man* (Tommy Djilas) at Light Opera Works. Thanks to John, Tralen, Miki, and the rest of my amazing TLTOTS family. Love to LCT, BG, and LG.

This page is sponsored by  
**Bretz Chiropractic Clinic**  
**Dr. Craig M. Bretz, D.C.**  
**101 W. Jefferson Street**  
**Sullivan, IL 61951**  
**217-728-8891**



**HEATHER DORE' JOHNSON** began her career dancing with the Royal Academy of Dance in Champaign, IL, focusing on classical ballet, character (Hungarian, Russian and Polish folk dance), free-movement, tap, jazz & musical theatre. At 14, she appeared in *The Nutcracker* with The North Carolina Dance Theatre & in '99, received her Primary Grades teaching certification with her RAD Elementary Exam. TLTOTS credits: *Best Little Whorehouse in Texas* (Angel), *Aladdin* (Scheherazade), *Funny Girl* (Mrs. O'Malley/Ens.), *West Side Story* (Teresita), TLTOTS's S.T.A.R. *Tours of The Garden of Rikki Tikki Tavi* (Darzee) and *Accidental Friends* (Marcy). Heather also appeared with Weird Al Yankovic on his Poodle Hat Tour as an Anarchy Cheerleader ("Smells Like Nirvana"). Favorite credits include: *Man of La Mancha* (Aldonza), *Cat on a Hot Tin Roof* (Maggie), *Oliver* (Nancy), *The Balcony* (Carmen), *Woyzeck* (Marie), and *Brigadoon* (Jeannie). Parkland College credits include: *Return to the Forbidden Planet* (Omnes), *Five Kinds of Silence* (Janet), and *Cabaret* (Fritzie/Fraulein Kost U/S). Screen credits include independent films and commercials, docu-drama *I'd Be Delighted*, and most recently, a commercial for Manolo's Pizza & Empanadas. Much love to JFSII & her wonderful family. Thank you for supporting the arts!

**THERESE KINCADE** is delighted to be back on stage at The Little Theater! She last appeared in the 50th Anniversary production of the *Follies* (Christine) and in *Nunsense* (The Reverend Mother). She has just finished a sold out run at E.I.U. of *Fiddler on the Roof* (Golde). She has been acting and directing for thirty years in both Charleston and Chicago. Therese is a member of the Little Theatre board of Directors and she and her husband, Bob, own What's Cookin' Restaurant in Charleston. Therese is an instructor at E.I.U and has two beautiful daughters, Annie and Laura. She would like to thank John and Tralen for welcoming her back!

**ALEXIS KINNEY** is tickled to be a part of The Little Theatre On The Square family. Currently a senior at Webster Conservatory, Alexis has appeared as a Leading Player in *Jaques Brel*...Rose Mundy in *Dancing At Lughnasa*, Jenny in *Company*, and ensemble in *The Wedding Singer*. Other Regional credits include Joanna Wilkes in *Big River*, Alice in *Alice in Wonderland*, Fredricka Armfeldt in *A Little Night Music* at STAGES and Marcy Park in *Spelling Bee* at New Line. Alexis would like to thank her family and friends for all their love and support.

**BOBBI KOTULA\*** is thrilled to join the talented creative team at TLTOTS. Seattle is home where she enjoys making a living on stage & in film, as a voice over artist, and Village Theatre fundraiser. Favorite roles are Mrs. Potts in *Beauty & the Beast*, Katie in *Meet Me in St. Louis*, Sarah in *Company*, and Carlotta in *Follies*. She holds a BA from Penn State University, and studied for her Masters in Directing at Villanova University. She enjoys gardening, cooking, public radio, laughing, collecting quotes, and watching movies with friends and family. Thanks for coming out to play! [www.bobbikotula.com](http://www.bobbikotula.com)

**ANDREW KRUEP** is extremely excited to spend his first summer in Sullivan, IL! He most recently appeared in the TLTOTS S.T.A.R. Tour Program as George in *Schoolhouse Rock Live!* and Poor Richard in *Frankly Ben*. Other favorite regional credits include *The Drowsy Chaperone* (Ensemble), *Guys and Dolls* (Liver Lips Louie), *Big River* (Huck Finn), *West Side Story* (Baby John), *Disney's Alice in Wonderland* (Tweedle Dum) and *Macbeth* (Malcolm). Thank you to everyone at The Little Theatre On The Square for this great opportunity! And always, love to family and friends for their unending support.

**JEROME LOWE** is thrilled to be a part of the 2010 TLTOTS summer season. He's going into his fourth year studying Musical Theater at Webster University's Conservatory for Theater Arts. Some of his past credits include: *A Year with Frog and Toad* (Snail), *Jesus Christ Superstar* (Simon), *Parade* (Jim Conley), and *Grease* (Teen Angel). He would like to thank his family and friends for endless love and support.

**SKIP LUNDBY\*** is thrilled to be in *Annie* at Little Theatre On The Square. He recently performed with Shaw-Chicago in *The Philanderer* and *The Doctor's Dilemma*. In Chicago he has appeared in *Dracula* as Van Helsing, *Lend Me A Tenor* as Saunders, as The Librarian in *Underneath The Lintel*, and a "Were-Pigeon" in Collaboration's *Sketchbook '04*. In NYC he worked with Riverside Shakespeare, The New Rude Mechanicals and The Shakespeare Project; regionally he has performed in the Colorado Shakespeare Festival, Montana Shakespeare In The Parks, and with the Cincinnati Shakespeare Festival as Gloucester in *King Lear*. He recently played Potter in Theatre At The Center's *A Wonderful Life*, a role he performed in two national tours with The Montana Rep. He has been a director, producer, designer, arts administrator and teacher, but there is nothing like being "in the light". "Thanks" to Rosemary for all her support.

**RAMAAD MORRIS** (Ensemble) is making his Little Theatre debut on the stage in this year's *Show Boat*. He is a junior this coming year at Rockford College. He is so excited to be on the professional stage yet again. He would like to thank the director for using him to make his creative dream come alive, friends, his grandma because she believes in him even when he doesn't. Finally he would like to dedicate this and every performance to his mother, though she is not with us, through her he finds his spot light. Enjoy the show and let the river role you into Broadway MAGIC!!



## Who's Who

**CLINTON SHERWOOD** is stoked to return to TLTOTS. A graduate from Millikin University, where he obtained a BFA in Musical Theatre and a Dance Minor, some of his favorite performance credits include: *A Chorus Line*, *Urinetown*, *Kiss Me Kate*, *Altar Boyz*, *Equinox/Solstice* dance concerts. Clinton also performed and recorded the role of Blair in *Golden Gate*, which was the winner of the 2010 Jonathan Larson New Musical Award. In the summer of 2008, Clinton was blessed with the opportunity to be on the CW's *90210* where he performed in Spring Awakening. Clinton's training has been eclectic and widespread, with experience from EDGE Dance Studio and Millennium Dance Complex in Los Angeles, The Shakespeare Globe, PunchDrunk Theatre in London, PanTheatre in Paris, and more. He is also an aspiring choreographer. He sends love and deep thanks to everyone who has supported him, especially his family, friends, and fiancé. 143!

**JANIE WALLACE** is so delighted to spend her summer with the Little Theatre! National Tours: Reuben's Wife in *Joseph... Dreamcoat*, Louise u/s (perf.) and Agnes in *Gypsy*. Favorite Regional Credits: Belle in *Beauty and the Beast*, Louise in *Gypsy*, Jellylorum in *CATS*, Usherette/Lick Me in *The Producers*, Lorraine and Phyllis in *42nd Street*, Rhoda in *A New Brain*, and Janet in *Rocky Horror*. Associate Choreographer/Assistant Director: Coeur d'Alene Summer Theatre, Cohoes Music Hall, Bigfork Summer Playhouse, and Utah Music Theatre. Proud Kansas girl and Illinois Wesleyan University alum. Love to Mom and Dad for your interminable support. Tralen Doler, I am insanely grateful.

**MARISHA WALLACE** is excited to be back at TLTOTS one more time. Marisha hails from Goldsboro, NC! She received a BFA degree in Musical Theatre and Theatre Education at East Carolina University. She was a winner of the North Carolina Singing Sensation competition and a finalist in the Broadway's Next Big Star competition. Regional credits include: *Dreamgirls* (Effie); *RENT* (Joanne); *Wedding Singer* (Holly); *Best Little Whorehouse in Texas* (Doatsey Mae/Beatrice); *Disney's High School Musical* (Taylor); *Hair* (Dionne); *Pajama Game* (Mae); *Best Little Whorehouse* (Jewel); *One Woman Show* (Holland America Cruise Line/Stilletto Entertainment). She would like to thank God for her gift; her Mom, family and friends for all of their support and love. To my fiancé Dom I love you with all my heart!

**DARCY WRIGHT** is thrilled to be a part of this incredible season. She comes to us from New York and she graduated with a B.F.A. in Acting from the University of Nevada Las Vegas. Some of her favorite roles include Eponine (*Les Mis*), Maria (*West Side Story*), Ruby (*Dames at Sea*), Peggy Sawyer (*42nd Street*), Diana Morales (*A Chorus Line*), Kaye (*Taffetas*), Hodel (*Fiddler*), Mary Jane (*Big River*), Bianca (*Kiss Me Kate*), and Kit/Griselda (*Top Girls*). Darcy has been a proud featured performer for Broadway Cares/Equity Fights Aids, as well as a guest artist at Birdland, Iridium Jazz Club, Splash, and The Laurie Beechman Theatre, all in N.Y.C. She would like to especially thank Traien for always believing in her.

**SHAWN PRYBY\*** (Production Stage Manager) Shawn currently serves as Company Manager and Educational Tour Director at The Little Theatre On The Square where he also directed *A Year With Frog and Toad*, Harnick & Legrands' *A Christmas Carol* and *The Honky Tonk Angels*. Additional directing credits include: *Baby, I Do! I Do!*, *Love Letters*, *The Sound of Music*, *Guys & Dolls*, *South Pacific*, *SALUTE! A Tribute to America's USO*, and Tommy Tune's 60ish Birthday Celebration. Management credits include- Nationally: *Hello, Dolly!* starring the legendary Carol Channing, The Pointer Sisters' *Ain't Misbehavin'*, *Jesus Christ Superstar* starring Ted Neeley and Carl Anderson, *She Loves Me*, *Man of La Mancha*, *Once On This Island*, *Steel Magnolias*. Regionally: *It Had To Be You* starring Cindy Williams and Eddie Mekka, *HATS!* starring Grammy Award Winner Melissa Manchester, *110 in the Shade*, *A Little Night Music*, *Mid-Life! The Crisis Musical*, *42nd Street*, *Shear Madness*, *Oil City Symphony*, *Forever Plaid*, *Smoke on the Mountain* and *Plaid Tidings*.

**JOSHUA ZECHE-ROSS** (Musical Director) is thrilled to be joining The Little Theatre this summer. Although based in New York City, he has spent the last two years as the resident musical director at the Cohoes Music Hall near Albany, NY where music directing credits included *Dreamgirls*, *The Full Monty*, *Dames at Sea*, and *The Producers*. Joshua also worked for fifteen summers at The Mac-Haydn Theatre in Chatham, NY, both onstage and in the orchestra pit. In 2009, he music directed and orchestrated many of their shows, including *Crazy for You*, *Sweet Charity* and *Beauty and the Beast*. Joshua holds a Bachelor of Music in Vocal Performance from the Steinhardt School at New York University. Many thanks to Traien, John, Michael and Janie, and love, as always, to Mom and Dad.

**DAVID SCOBIE** (Production Manager) This is Dave's 5th season at the Little Theatre On The Square where he is excited to now be serving as production manager. He recently became a full time employee this past fall after graduating from the Conservatory of Theatre Arts at Webster University. He enjoys being part of the Little Theatre family and some of his favorite shows here at The Little Theatre include *Smoke On The Mountain*, *The Full Monty*, and *All Shook Up*. When he is not working at the theatre Dave also works for Entertainment Technology Group where he has worked for 9 years now. In his free time he enjoys spending time with his dog Gus, his lovely girlfriend and with the guys out at the man cave. He would like to thank his family for all of their love and support. Enjoy the show!

**ELIZABETH NOSER** (Props Master) is finishing up her final semester this fall at Missouri State University where she is getting her BFA in Theater with an emphasis in Scenic and Properties Design. She has worked at Springfield Missouri's Tent Theater for their Summer 2008 season as Props Master and Summer 2009 season as the Scenic Artist. After graduating in December she is moving to Portland, OR in hopes to work for the local opera.





**ANGELO TORRE** (Specialty Carpenter) is happy to be back in Sullivan at the theatre he considers home. He returns after a 10 year absence. Angelo has toured the continent with various shows including *The King & I* and *How to Succeed in Business...*. For the last 10 years he has been in NYC on Broadway and television. For TV he's done props, scenery and lighting for *Conan O'Brien*, *Martha Stewart*, several soap operas, the Kennedy Center Honors and The Macy's Thanksgiving parade. Theatrically, Angelo's worked on such Broadway shows as *You're A Good Man, Charlie Brown*, *Kiss Me Kate*, *Top Dog/Underdog*, *Into The Woods*, *Grey Gardens*, *The Wedding Singer*, *Sweet Smell Of Success*, *Sweet Charity*, *Wonderful Town*, *Curtains* and a bunch more. He's worked with folks such as Brian Stokes Mitchell, Drew Carey, Brooke Shields, Chita Rivera, Carol Channing, Christina Applegate, David Hyde Pierce, Harvey Fierstein, Christine Ebersol, Wayne Knight, Mos Def, Jeffery Wright and on and on and on. Angelo and his pal Iggy the dog want to thank Miki, John and Lori for EVERYTHING they've done for us & we hope you enjoy the skit.

**MATTHEW J. FICK** (Lighting Designer) hails from Port Clinton, Ohio. Received his BFA in Theatre from Ohio University in 2002 and received his Masters from Rutgers University in 2005. Selected works: *Chicago*, *Cabaret*, *Beauty and the Beast*, *Evita*, *Aida*, *Singin' In The Rain*. East Coast Premier: *The Sandstorm (Stories from the Front)*, Metro Stage, Alexandria, VA. World Premier: *Becoming George*, Metro Stage, Alexandria, VA. Matt is a proud member and set designer for Hoboken's Mile Square Theatre. Matt's props can also be seen in the Australian production of *Wicked* and he is thrilled to be making his design debut here at The Little Theatre On The Square. Thanks always to his wife Jennifer for her ever-loving support!

**ANSLEY ZECKKINE** (Sound Engineer) Born, raised, and still living in the Pensacola, Florida area, Ansley Zecckine (23) is a Theatre Tech II and Sound Engineer at Pensacola Junior College Ashmore Fine Arts Auditorium. After three years of working in theatre, this is his first opportunity for professional work outside the local area. In addition to being employed by PJC, Ansley is also a student pursuing a music degree. His primary instrument is classical guitar. He began learning how to operate and manipulate sound in his past job as a board operator for Satellite Radio Network, and in growing up around sound equipment while playing guitar in his church's band. He is the middle child of a family of five, having one brother and one sister, and will be the first generation of his family to obtain a college degree.

**ASHLEY NEWMAN** (Assistant Stage Manager) is excited to be joining the creative team at The Little Theatre On The Square for this spectacular season! Originally from Dallas, Texas, Ashley will begin her junior year at Webster University in the fall while studying in Vienna, Austria. Thanks to Mom and Dad for supporting me in doing what I love. Many thanks to the spectacular company and crew that make this season happen. Enjoy the show!

**JANE DAVIS** (Assistant Stage Manager) comes to The Little Theatre On the Square from Millikin University in Decatur, Illinois where she'll be a sophomore in the coming year. This is Jane's first year at Little Theatre and is having a great time!

**MICHAEL WEAVER** (Director) resides in Seattle, Washington. With Little Theatre On The Square he has directed *The Wedding Singer* and *Annie*. He was co-founder and Artistic Director of Actors Repertory Theatre in Spokane, WA where he directed *Humble Boy* starring Oscar winner Patty Duke, *Long Day's Journey Into Night*, *The Dazzle*, *Blithe Spirit*, and *The Importance of Being Earnest* among others. While Associate Artistic Director of Interplayers Ensemble he directed such plays as *Scotland Road*, *Private Lives*, *Twelfth Night* and *The Gin Game*. He directed numerous musicals with Montana's popular Bigfork Summer Playhouse including *Sugar*, *Brigadoon*, *Hello, Dolly!*, *Chicago*, *Fiddler On The Roof* and *My Fair Lady*. As an actor he recently appeared in Meet Me In St. Louis in Arizona and Pennsylvania as well as in *Anything Goes* at Arizona Broadway Theatre. At TLTOTS he was seen in *Show Boat*, *25th Annual Putnam County Spelling Bee*, *Singin' In The Rain*, *Best Little Whorehouse In Texas* and *Christmas Story*. Elsewhere has appeared in *My Fair Lady*, *Rabbit Hole*, *Moonlight and Magnolias*, *Born Yesterday*, *Greater Tuna*, *Nonsense Amen!*, *Dirty Blonde*, *Cabaret* and *The Drawer Boy*. He acted and/or directed nationally with, among others, Northwest Shakespeare Ensemble, Tacoma Light Opera, San Francisco's Sierra Repertory Theatre, Seattle's Pioneer Square Theatre, Coeur d'Alene Summer Theatre, and Pistarkle Theatre on St. Thomas in the Virgin Islands.

**JEN PRICE FICK** (Scenic Designer) is so happy to be part of this summer's TLTOTS company. Selected design credits: *With Glee* (Prospect Theater Company, NYC); *Blackouts*; *No Matinees* (NY Center Stage); *Rounding Third*; *The 8th Annual 7th Inning Stretch*; *Lily's Purple Plastic Purse* (Mile Square Theatre), *Giasone* (Yale Baroque Opera Project); *Our Town* (Yale Dramat); *Treasure Island*; *The Musical* (Nazareth Performing Arts Center); *The Sand Storm*; *Becoming George* (MetroStage, DC) and 5 seasons of musicals with the Cohoes Music Hall (Capital Region, NY). Assisting credits: *You're Welcome America...*; *Irena's Vow*; *The Pirate Queen* (Broadway); *Imagine This* (West End); touring and International productions of *Wicked* and *Billy Elliot*, and the Papal visit to New York City in 2008. Love to Matt and Lu.





**CAROLINE ADAMSON** lives in Moweaqua, Illinois and will be entering the 4th grade at Central A&M. She is a student with the S.T.A.R. Dance and Drama program. This is Caroline's 4th production at The Little Theatre. She has appeared in *Willy Wonka Jr.*, *101 Dalmations*, and *A Year With Frog and Toad*. When she's not singing or dancing, Caroline enjoys golf, piano, JFL cheerleading, creative writing and foreign language studies.

**EMILY BACINO ALTHAUS** Emily is ecstatic to be in LTOTS' production of *Annie*. She will be in sixth grade this fall at St. John's. This is Emily's 16th show. Favorite credits include *A Christmas Story* (Ester Jane), *Gypsy* (Balloon girl and w/s Baby June and Baby Louise), *Seussical* (JoJo), *Peter Pan* (Lost Boy), *Nuncrackers* (Mary Margaret), *Frog and Toad* (Turtle), *Beauty and the Beast* (Baker/Enchantress Minion) and ensemble roles in *Evita*, *King and I*, *School House Rock Jr.*, *Jonah*, *Once on this Island Jr.*, and *Aladdin Jr.* Thanks to mom, dad, family, friends (kw), as well as John and Tralen for this wonderful opportunity. Enjoy the show!

**KAITLYN CURRY** is thrilled to be selected as part of the cast of *Annie*. Since she was three, the highlight of her day was performing scenes from her favorite musicals. Her first professional stage production she saw was *Cats* at the age of three. Local productions at Effingham Junior High consist of "Winnifred" in *Once Upon a Mattress*, Genie in *Aladdin Junior*, Millie in *Thoroughly Modern Millie*, and the F.A.C.E. production of *Oklahoma!*. She would like to thank her family and Donna Wallis for all their support and guidance as well as TLTOTS. She is looking forward to a future with many more productions and experiences that she will treasure forever.

**MADISON EASTON** is very excited to be participating in her 2nd professional show here at TLTOTS. Her first role at TLT was as a newsboy in *Gypsy*, but you may have seen her in *Willy Wonka Jr.* or *Beauty and the Beast Jr.* as well. She is proud to announce that *Annie* will be her 8th acting performance in her 13 years! She has also participated in productions at The Rosebud Theatre in Effingham, Illinois and at Neoga Jr.-Sr. High School, with her favorite roles being Brigitta in *The Sound of Music* and Celia in *The Little Mermaid*. Madison can't wait for school to start this Fall and is looking forward to the 8th grade where she will be active in Band, Cheerleading, Volleyball, Track, and Basketball. Madison would like to thank her family and friends for supporting her as she continues to pursue her dream of becoming an actress.

**C.J. FAM** age 10 comes all the way from Ft. Lauderdale Florida with her puppy Hollywood. C.J. Is so excited about her premier performance at The Little Theatre On The Square and thanks the people of Sullivan for being so welcoming and for being part of this wonderful cast. CJ has been performing for three years. In 2008 she appeared as Marta in international tour of *The Sound of Music* and toured Asia. In 2009 she appeared as an orphan in the National Tour of *Chitty Chitty Bang Bang* played *Annie* at the Lyceum Theater in Arrow Rock, Missouri, and Hillary in *From Brooklyn with Love*. C.J. recently completed the movie teaser *Tears of Justice* in the Spring of 2010. C.J. Fam won the Young Artist Award competition and a vocal scholarship in 2010. In 2009 CJ Fam was the vocal winner of Youth Division of the 2009 South Florida Fair Starz of the Future vocal competition. CJ started singing the National Anthem for national baseball teams at the age of 7. She has opened pre-season national baseball games for the Baltimore Orioles and Washington Nationals.

**HALEY FATHEREE** is 14 years old and makes her return to stage as July in the Little Theatre's production of *Annie*. She has performed in a wide array of other shows including: *Thoroughly Modern Millie* (Mrs. Meers), *Aladdin Jr.* (Princess Jasmine), *Once Upon a Mattress* (Princess #12), *Music Man* (Gracie Shinn), *Sound of Music* (Marta), and *The Wizard of Oz* (Munchkin). Haley has been the recipient of numerous awards for her vocal talent. She would like to thank God and her family for their support, and hopes you enjoy the show.

**MADISON MARTIN** who stars as Molly, is from Sullivan, Illinois. She is very excited to start 1st grade. Madison debuted as Snowball in *101 Dalmations* last summer, and has loved the theatre ever since. Madison has been in ballet since she was 2 and gymnastics since she was 3. She loves singing, painting, and baking. Even though she doesn't enjoy playing sports because they make her "sweat"; she loves the energy of the stage, the lights, and all the work that goes into making a production! She may be small but she is one big personality!

**LAUREN MELLOTT** is thrilled to be returning to the Little Theatre stage this summer. She was most recently seen as a Silly Girl in *Beauty & the Beast, Jr.* Prior TLTOTS credits include: Bird in *A Year With Frog & Toad, Jr.*, Violet B. in *Willy Wonka, Jr.*, Helen Weathers in *A Christmas Story* and Rebecca Bennett in *Nuncrackers*. Additional credits include The Comedienne in *These are the Jokes*, Snow White in *Geology Rock* and Mrs. Feboldson in *Weather, Whether You Like it or Not*. Apart from being onstage, Lauren loves to read, listen to music and sing. She wants to give a shout out to her family for all their love and support! Thanks guys! And a big thanks to John and Tralen for this opportunity!

**ARYN ROUSSER** is 9 years old and lives in Sullivan. She will be starting fourth grade at Sullivan Elementary this fall. She has participated in the S.T.A.R. program at TLTOTS for five years. She is very excited to be a part of *Annie*.

**SOPHIE SCHWALBACH** is elated to be returning to TLTOTS. Her most recent role here was Babbette in *Beauty and the Beast*. Favorite roles include: Baby June in *Gypsy*, Ester Jane in *A Christmas Story*, Appassionata in *Lil Abner*. Sophie has been at TLTOTS since the age of 5. You can see Sophie in the award winning, undefeated show choir Xperience. It took home many specialty awards including Best Choreography, Best Vocals, and Best Combo. Sophie would love to thank John, Tralen, and the whole cast of *Annie*! Love to Mom, Dad, and sisters.

**MADDIE COOPER MOYER** is a 5 year old golden retriever born at Rolling Oaks in Litchfield, Minnesota. She is a member of The Decatur Obedience Training Club in Warrensburg, Illinois. She has earned her AKC Canine Good Citizen title, AKC Rally Novice title, is currently working on completion of her AKC Obedience Companion Dog title and loves competing in AKC and CPE agility trials. Maddie resides in the country, takes daily walks in the Village of Forsyth Park and goes with her owner to work every day. She adores her 4 rescued barn cats, is extremely passionate about squirrels and loves her screaming stuffed monkey! She has traveled extensively attending a St. Louis Cardinals Baseball game, swam in the Great Lakes, Gulf of Mexico and has even strolled on the streets of Key West, FL. Maddie belongs to Sandee Moyer and the late James R. Moyer.

Want to learn more about your favorite TLTOTS Actor?

Well, here is your chance...

# Adopt An Actor

The **Adopt An Actor** program is set up as a fundraiser for The Little Theatre On The Square. You can adopt your favorite Actor or Actress and learn the inside scoop about their lives and what it takes to be a member of the TLTOTS company.

By **Adopting An Actor** you get a chance to learn more about their lives and the parts they play in our summer season shows.

- \* You get an autographed 8 X 10 picture of your Actor.
- \* You get a Button with your Actors' photo on it to wear to the shows when you come.
- \* You get to set up a lunch or dinner meeting with your actor before a show, where you can take your Actor out to one of the area restaurants. (Remember these are starving artists!)
- \* Your name will appear in the lobby with your Actors' picture behind the concession stand.

We feel that our audience is a vital reason that so many Actors return to our theatre. You can help us continue to make these everlasting friendships with the 'Stars' of tomorrow.

Call the business office and ask for John Stephens - to adopt your Actor today. Call 217-728-2065. Or leave this slip with your payment at the Box Office.

## Adopt An Actor 2010

### \$500.00 Level

**Therese Kincade**

**Michael Weaver**

Tessa White - Adopted by J. Sain

### \$300 Level

**Kyle Adams**

Lizette Cruz - Adopted by Mike and Laura Martin

**Zachary Gray**

**Heather Dore' Johnson**

**Alexis Kinney**

**Andrew Kruep**

Janie Wallace - Adopted by her Aunt, Jean Anne Leigh

### Clinton Sherwood

John Stephens - Adopted by Mary Zinn

**Marisha Wallace**

**Darcy Wright**

### \$200 Level

Jack Bartholet - Adopted by Shop at 9 West

**Christopher Blem**

Galen Crawley - Adopted by Nina Martin

Josh Dawson - Adopted by J. Sain

**Tia De Shazor**

Monte Howell - Adpoted by Lew & Patty Stiff

**Jerome Lowe**

**Ramaad Morris**

Whitney White - Adopted by Ron & Sharon White

Your Name \_\_\_\_\_

Actor's Name \_\_\_\_\_

Phone \_\_\_\_\_ E-Mail \_\_\_\_\_

**Turn in this slip to the box office with payment to Adopt your Actor.**





## Charleston's Radio Station

"Hit-Mix 88.9 plays the widest variety of the biggest and best artists. Hit-Mix 88.9 is the story of your life in music."

[www.weiuhitmix.net](http://www.weiuhitmix.net)



## Public Broadcasting Station

[www.weiuhitmix.net](http://www.weiuhitmix.net)

### CHANNEL LISTING

#### CLEARVISION CABLE

Allerton 12  
Beecher City, IL 10  
Brocton, IL 6  
Cowden, IL 4  
Dieterich, IL 60  
Hume/Metcalf, IL 6  
Jewett, IL 11  
Montrose, IL 7  
Shumway, IL 14  
Sidell, IL 11  
Watson/Heartville, IL 4

#### CONSOLIDATED DVS

Channel 6

#### TIME WARNER

Terre Haute, IN 350 SD, 750 HD

#### PAVLOV MEDIA 12

#### DIRECT TV / DISH NETWORK

Channel 51

#### OVER-THE-AIR 51.1

#### AVENUE BROADCASTING

Paris, IL 14  
Westville, IL 5  
Tilton, IL 5  
Cattin, IL 5  
Georgetown, IL 5  
South Danville, IL 5

#### MEDIACOM

Channel 6 SD, 706 HD

#### COMCAST

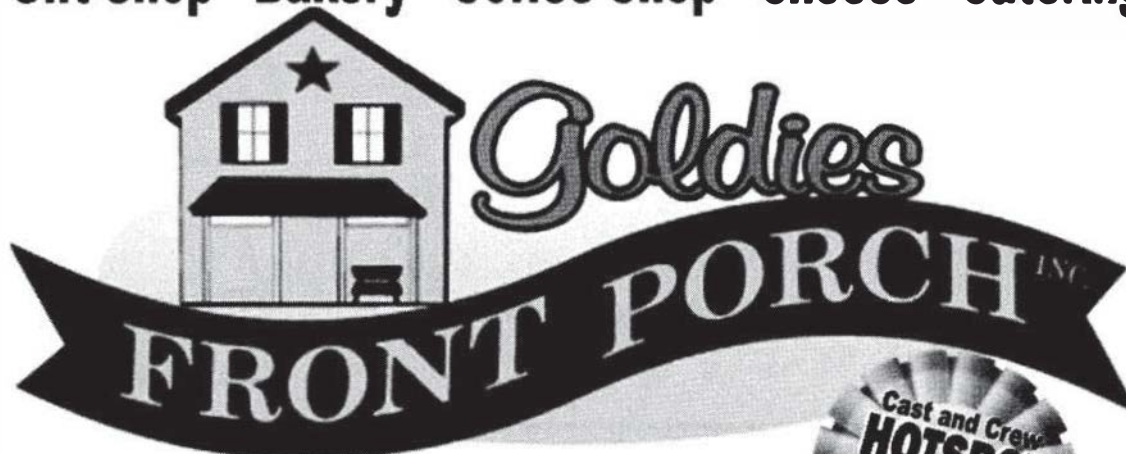
Cayuga 11  
Newman 11  
Champaign/Urbana, IL  
14 & 189 SD, 915 HD  
Danville, Decatur, Springfield,  
Ridge Farm, Indianola, IL  
189 SD, 915 HD

#### MOULTRIE COMMUNICATIONS

Lovington, IL 31

#### SUDDENLINK CABLE 97

Gift Shop Bakery Coffee Shop Cheese Catering



*Daily Lunch Specials*

Open Mon - Fri 7:30 am - 6:30 pm

Sat 7:30 am - 5:30pm

Closed Sunday

[www.goldiesfrontporch.com](http://www.goldiesfrontporch.com)

412 S. Hamilton Street, Sullivan, IL. 61951 Phone: 217-728-4641



**SUBWAY**

**eat fresh.®**

720 West Jackson Street

Sullivan, IL 61951

Phone: 217-728-4020







## MID-STATE TANK CO., INC.

P.O. Box 317 • Sullivan, IL 61951

PH: 217.728.8383 • FAX: 217.728.8384 • TOLL FREE: 800.722.8384

The Sentricon difference. No more colony. No more problem.

## Crist Termite & Pest Solutions, Inc.

David Crist

217-543-2890 • 207 N Oak Street • Arthur, IL 61911

Kurt & Mara  
Van Deursen

**ACE**  
Hardware

**R** RadioShack.  
*You've got questions. We've got answers.®*

• *Electronics*

• *Hardware* • *Tools*

7am - 7pm Mon - Fri

8am - 6pm Sat • 12 - 4 Sun

435 S. Hamilton

Lakeland Plaza

Sullivan, Illinois 61951

(217) 728-4100

## New Prairie Gallery

10 S. Washington  
On The Square  
Sullivan, IL

Original artwork from over 30 artists for sale.  
Jewelry, painting, sculpture, glass, fibers and  
more!

217-246-7623 or 217-246-7622  
[www.acwprairiegallery.com](http://www.acwprairiegallery.com)

 **Anderson Electric**  
BLOOMINGTON • DANVILLE • MATTOON • SPRINGFIELD

*Electrical Contractors Serving Commercial,  
Data Com, Health Care, Industrial and Power  
Generating Customers Since 1918.*

1921 Oak Ave, Mattoon, IL 61838  
Ph. 217-234-7476

Robert J. McClain, Vice President  
[www.anderson-electric.com](http://www.anderson-electric.com)

# Huddie's Goodies

Specialty & Practical Gifts

18 South Washington, Sullivan IL 61951

217-728-7300

Mon - Friday 10:30 - 6:00 • Saturday 10:30 - 4:00

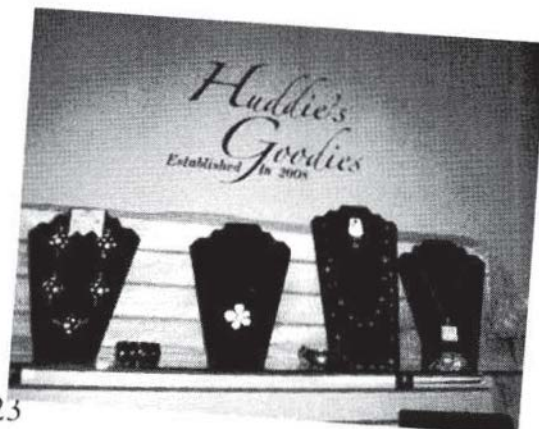
Closed Sundays • *Special Extended Hours when the Theatre is open*

Purses • Jewelry • Toys

Housewares • Unique Grilling Accessories

Forever in Blue Jeans Collectables

Dips • Salsas • Flesor's Candy *and so much more!*





# *The Little Theatre On The Square*

Proudly Presents



*Book by* **Thomas Meehan**      *Music by* **Charles Strouse**      *Lyrics by* **Martin Charnin**  
*Original Broadway Production Directed by* **Martin Charnin**  
*Presented on Broadway by* **Mike Nichols**

*Produced by*  
Irwin Meyer      Stephen R. Friedman      Lewis Allen  
Alvin Nederlander      The John F. Kennedy Center      Icarus Productions  
Associates Inc.      for the Performing Arts

*Based on "Little Orphan Annie"*  
*By Permission of Tribune Media Services, Inc.*  
*Originally Produced by The Goodspeed Opera House*  
*Michael P. Price, Executive Director*

Scenic Design      Lighting Design      Costume Design  
Jen Price-Fick      Matt Fick      Sophia Lidz

Properties Design      Sound Design  
Elizabeth Noser      Ansley Zecckine

Musical Director      Production Stage Manager  
Joshua Zecher-Ross      Shawn Pryby\*

Choreographer  
Janie Wallace

Director

**Michael Weaver**

\*Denotes members of Actors' Equity Association, The union for actors and stage managers in the United States .  
**Annie** is produced with special arrangement from Music Theatre International (MTI)  
421 West 54th Street - New York, NY 10019 (212) 541-4684 [www.mtishows.com](http://www.mtishows.com)

**\*\*The Annie Cast\*\***

Annie.....CJ Fam  
Daddy Warbucks.....Jerry Christakos\*  
Grace Farrell.....Lizette Cruz  
Miss Hannigan.....Bobbi Kotula\*  
Rooster.....Kyle Adams  
Lilly.....Galen Crawley  
Burt Healy.....Jack Bartholet  
FDR.....Skip Lundby\*  
Drake.....Chris Blem  
Mrs. Pugh.....Therese Kincade  
Annette.....Janie Wallace  
Mrs. Greer.....Marisha Wallace  
Cecile.....Darcy Wright  
Star To Be.....Alexis Kinney  
Molly.....Madison Martin  
July.....Haley Fatheree  
Duffy.....Kaitlyn Curry  
Pepper.....Madison Easton  
Tessie.....Lauren Mellott  
Kate.....Caroline Adamson  
Orphan Ensemble.....Aryn Rousser, Sophie Schwalbach,  
Emily Bacino Althaus, Mindie Weaver  
Ensemble.....Josh Dawson, Zachary Gray, Heather Dore' Johnson  
Andrew Kruep, Jerome Lowe, Ramaad Morris, Clinton Sherwood

**JACKSON**  
**Decatur • Sullivan**



**[www.jacksoncars.com](http://www.jacksoncars.com)**



# Annie- Musical Numbers

## Act 1

Overture — Orchestra

**Scene 1 NYC Municipal Orphanage**

*Maybe*.....Annie & Orphans  
*It's the Hard Knock Life*.....Annie & Orphans  
*It's the Hard Knock Life (Reprise)*.....Orphans

**Scene 2 St. Mark's Place**

*Tomorrow*.....Annie

**Scene 3 NYC Municipal Orphanage**

*Little Girls*.....Miss Hannigan  
*Little Girls (Reprise)*.....Miss Hannigan

**Scene 4 Warbuck's Mansion**

*I Think I'm Gonna Like It Here*.....Grace, Annie & Servants

**Scene 5 Streets of NYC**

*N.Y.C.*.....Warbucks, Grace, Annie, Star-to-Be, Company

**Scene 6 NYC Municipal Orphanage**

*Easy Street*.....Rooster, Miss Hannigan, Lily

**Scene 7 Warbuck's Office**

*You Won't Be an Orphan for Long*.....Grace & Warbucks  
*Maybe (Reprise)*.....Annie

## Act 2

**Scene 1 NBC Radio Studio**

*Maybe (Reprise)*.....Annie  
*You're Never Fully Dressed Without a Smile*.....Bert Healy, Boylan Sisters

**Scene 2 NYC Municipal Orphanage**

*You're Never Fully Dressed Without a Smile (Reprise)*.....Orphans  
*Easy Street (Reprise)*.....Rooster, Miss Hannigan, Lily

**Scene 3 White House**

*Tomorrow (Cabinet Reprise)*.....Annie, Roosevelt, Warbucks, Cabinet

**Scene 4 Warbuck's Mansion Gallery**

*Something Was Missing*.....Warbucks  
*I Don't Need Anything But You*.....Warbucks & Annie  
*Maybe (Reprise)*.....Annie  
*Finale*.....Company

There will be a 15 Minute intermission between acts.

There is no recording or photography of any kind allowed.

# want more?

enjoying your evening out? wondering why you don't  
do this more often? now you can!

here's a look at part of our 2010-2011 season...

<b>EVENT</b>	<b>SHOW DATE(S)</b>
Kelly Bell Band	Saturday, August 28
Ben Bailey	Thursday, September 2
Tito Puente, Jr.	Friday, September 24
100 Years of Broadway	Saturday, October 30
TUNKUL Percussion	Tuesday, November 9
It's A Wonderful Life	Sat. Dec. 11 & Sun. Dec.12
Silent Surrealism	Friday, January 21
The Jeff Hamilton Trio	Friday, Feb. 11
The Ahn Trio	Friday, Feb. 18
Matthew Polenzani	Thursday, March 31
Sierra Leone Refugee All Stars	Saturday, April 16

TICKETS AVAILABLE LATE JULY



9th St. and Garfield Ave. on the campus of Eastern Illinois University in Charleston, Illinois

[www.eiu.edu/doudna](http://www.eiu.edu/doudna)

For more information, contact the Patron Services/Box Office at  
**217-581-3110**, or e-mail [doudnatix@eiu.edu](mailto:doudnatix@eiu.edu)



# ***Annie Orchestra***

Piano/Conductor.....Joshua Zecher-Ross  
Drums.....Dominic Lynch  
Keyboard.....Christopher Weisenborn  
Trumpet.....Kyle Nicholson  
Reeds.....Claire Nicholson

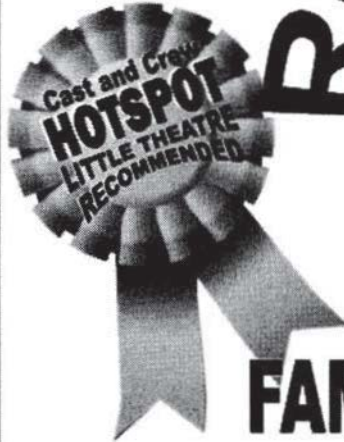
## ***The Production Staff***

Production Manager.....David J. Scobbie  
Assistant Stage Manager.....Jane Davis  
Assistant Stage Manager.....Ashley Newman  
Costume Shop Foreman.....Jimmy Goode  
Stitchers.....Ryan Hanson, Tiffany Lent  
Sound Technician.....Ansley Zecckine  
Master Electrician.....Ryan Helton  
Scenic Charge Artist.....Courtney Nelson  
Properties Master.....Elizabeth Noser  
Specialty Carpenter.....Angelo Torre  
Master Carpenter.....Carrie Brandt  
Carpenters.....Anthony Barron, Collin Crabtree  
Wardrobe Master.....Sarah Blysmá  
Assistant Master Electrician.....Michael Dold  
Scenic Artist.....Jacee Rohlck  
Spotlight Operator.....Marisa Gollus  
Ticket Office Assistants.....Donna Newcome, Marissa Reedy,  
Cheryl Schmidt, Jill Seelhofer, Stefanie Wolfe  
House Manager.....Carolanne Morgan  
Assistant House Manager.....Bryce Hayward

## ***The Little Theatre Administrative Staff***

Executive Director.....John J. Stephens  
Artistic Director.....Tralen Doler  
Business Manager.....Lori Harbaugh  
Education Director.....Heather Dore' Johnson  
Ticket Office Managers.....Arlene Denning, Becky Zimmerman  
Advertising/Group Sales Manager.....Ashton Rauch  
Company Manager.....Carolanne Morgan  
Outreach Tour Director.....Shawn Pryby  
Friends Coordinator.....Joel Kim-Booster

**SERVING THE FINEST  
BREAKFAST,  
LUNCH,  
AND DINNER**



**RED APPLE**



**Daily Specials**  
**Black Angus Burgers**  
**Marvelous Melts**  
**Wraps**  
**Phillys**  
**Steak**  
**Chicken**  
**Italian Dishes**  
**...and MORE!**

**FAMILY RESTAURANT**

**Open 7 Days a Week 5AM - 8PM**  
**1402 South Hamilton Street Sullivan, IL**

**CF&h Insurance Agency**



**13 South Main Street  
Sullivan, IL 61951  
(217)728-2323**

**113 South State Street  
Monticello, IL 61856  
(217) 762-2182**

**1123 Maine  
Windsor, IL 61957  
(217)459-2740**

**Website: [www.cfhins.com](http://www.cfhins.com)**



Located in The Heart of  
town right on the square.

Enhancing the present,  
securing the future.



# Kellerman Chiropractic Center

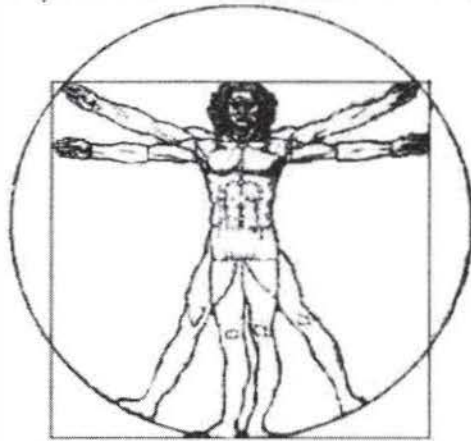
221 N. Anderson

Sullivan, IL 61951

Behind Walker's Car Wash

Hours: Monday - Thursday

9-1 & 3-5:30



Call us at 728-8888 to schedule  
an appointment with  
Dr. Nicolas Kellerman.

Visit our website:  
[www.kellermancc.com](http://www.kellermancc.com)

The official Chiropractor of  
The Little Theatre On The Square

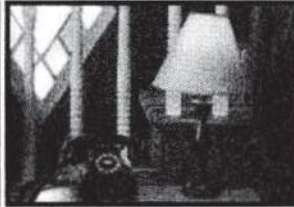


THE  
HARRISON  
STREET  
INN



217-728-4550

204 E. Harrison Street  
Sullivan, IL 61951



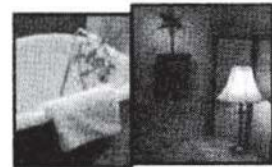
- Each Spacious Room offers
- ~ A private entrance
  - ~ **Private Bathroom**
  - ~ Hair Dryer
  - ~ Cable Television
  - ~ Coffee & Tea Supplies
  - ~ Coffee maker
  - ~ Refrigerator
  - ~ Microwave
  - ~ Wireless Internet
  - & Much More

**Casual & Comfortable**

Overnight Accommodations

Located just steps from downtown Sullivan  
Charm, Atmosphere & Modern Amenities

[www.theharrisonstreetinn.com](http://www.theharrisonstreetinn.com)



Illinois Printing Services  
INCORPORATED

217/728-2786



**The Sullivan Printers**

A Division of IPS, Inc.

217/728-7813



P. O. Box 877 • 304 8th Street • Charleston, IL 61920  
Ph 217•345•7518 Fax 217•345•7534



“WHERE *SERVICE* IS MORE THAN A PROMISE.”

**watts**  
COPY SYSTEMS, INC.

[www.wattscopy.com](http://www.wattscopy.com)

**watts**  
ONLINE PRINTING

[www.wattsonlineprinting.com](http://www.wattsonlineprinting.com)

**WATTS WHOLESALE FOODS**  
INTERNATIONAL

[www.wattswholesalefoods.com](http://www.wattswholesalefoods.com)

**AQUA PURE HEALTH**

[www.aquapureh2o.com](http://www.aquapureh2o.com)

**gpsfootprints**

MANAGING YOUR GREATEST ASSET

[www.gpsfootprints.com](http://www.gpsfootprints.com)

**watts**  
COPY SYSTEMS, INC.

JON BIXBY • 1518 Lakeland Blvd • Mattoon, IL 61938  
[jbixby@wattscopy.com](mailto:jbixby@wattscopy.com) • ph 217.234.6418

1 in 3 adults over age 65 falls each year.\*

“Mom lives alone...  
what will I do  
if she falls?”



Give your Mom CareLink™

We're there for her. Every Minute. Every Day.

**Healthcom**  
can offer independence  
and peace of mind.  
800-525-6237 ext 230

\*CDC statistical reference information.  
031406LMD



**\$25**  
INSTANT  
SAVINGS  
Limited time  
offer.

For more information about falls and  
fall prevention topics please go online  
to [www.mycarelink.com](http://www.mycarelink.com)

Free installation to all theatre patrons (\$50 Value)

# Pearman

## PHARMACY



Find us on the south side of the square...

116 West Court Street  
Paris, Illinois 61944  
217.465.8455

*Theatre is the greatest of all art forms, the most immediate way in which a human being can share with another the sense of what it is to be a human being.*  
*Oscar Wilde*



Steve Benefiel, R.PH.  
Tom Hebermehl, R.PH.  
Dustin Melton, R.PH.  
Denise Allanson, R.PH.

## Sullivan Country Club



Lovely Country View • Delicious Food

**We now accept credit cards**

*Sunday Brunch Buffet - 11am to 1pm*

*Tuesday through Sunday Lunch - 11am to 1:30 pm*

*Tuesday through Saturday Dinner - 5 pm to 9 pm*

**Reservations preferred (217) 728-7232**

**Receive a Free glass of wine when you show your tickets!**



# Great People! Great Bank!

## Great Services:

- A wide array of loan and deposit products
- Debit/Credit Cards
- Fixed rate residential mortgages originated and serviced by us
- Online Banking
- Professional Trust Services/  
Farm Management



## Scott State Bank

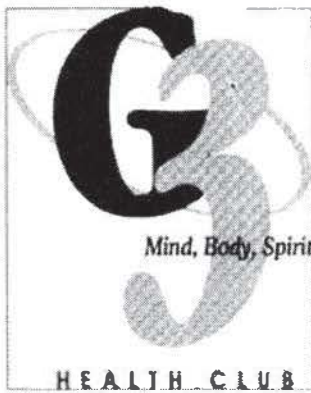
Bethany • Dalton City • Sullivan

[www.scottbancshares.com](http://www.scottbancshares.com)

(217) 665-3321



*Serving With Distinction Since 1887*



Mind, Body, Spirit

HEALTH CLUB

On The Square  
in Sullivan  
13 E. Jefferson,  
Sullivan, IL 61951  
217-620-1676

THE  
*Finishing*  
TOUCH  
Home and Office Interiors, LLC

*Interior Design Services*  
*Fine Furniture*  
*Wall Coverings*  
*Window Coverings*  
*Wall Decor*  
*Lamps and Accessories*

**Mary Droste**  
Charleston  
217.345.7649  
By appointment  
Monday-Friday 10 am-5 pm

## City of Sullivan

*After all the hard work,  
rehearsals, wardrobe and  
make-up for this exciting  
theatre season...when the  
curtain goes up ----  
Break a Leg!*



McDONALD'S PROUDLY SUPPORTS  
THE THEATRE FOR YOUNG AUDIENCE  
PRODUCTIONS

TRY OUR VARIETY OF DESSERTS

VALUE MEALS

HAPPY MEALS



11 West Jackson Street  
Sullivan, Illinois 61951







# 2010 Board of Trustees

The Little Theatre On The Square is governed by a not-for-profit corporation. The Board of Trustees of the corporation is made up of representatives from communities throughout the theatre's market area.

## 2010 Officers

President .....Ralph Kirk  
Vice President .....David Hellwig  
Secretary .....Dennis Williams  
Treasurer .....Kim Schwalbach

### Region One Trustees

Tom Bunfill.....Sullivan  
Linda Carlton-Huber..... Sullivan  
Dixie Dickens..... Sullivan  
Evan Dickens ..... Sullivan  
Mary Ann Hargis.....Sullivan  
Todd Harris.....Sullivan  
Ralph Kirk.....Sullivan  
Pauline Rowles..... Sullivan  
Jim Standerfer.....Sullivan  
Ronald White ..... Sullivan

### Region Two Trustees

David Hellwig.....Springfield  
John Koucky .....Decatur  
Mary Ann Koucky.....Decatur  
Kim Schwalbach.....Decatur  
Dennis Williams.....Springfield

### Region Three Trustees

Debbie Benefiel.....Paris  
Steve Benefiel .....Paris  
Rick Rhodes.....Monticello

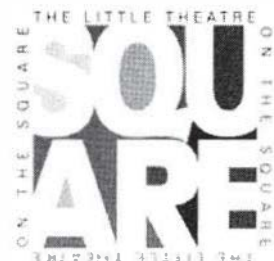
### Region Four Trustees

Don Behl..... Shelbyville  
Judy Behl ..... Shelbyville  
Bob Pancoast..... Shelbyville  
Marilyn Sears..... Shelbyville

### Region Five Trustees

Terry Davis.....Mattoon  
Mary Droste ..... Charleston  
Therese Kincade.....Charleston  
Michael Martin..... Mattoon  
Lew Stiff.....Mattoon  
Patty Stiff.....Mattoon

We thank our entire Board of Trustees  
for their tireless efforts on behalf of  
The Little Theatre On The Square.



The Little Theatre  
is a member of  
**NAMT**

**NATIONAL ALLIANCE  
for MUSICAL THEATRE**

The National Alliance for Musical Theatre, founded in 1985, is the only national service organization dedicated exclusively to musical theatre. Its 144 members include theatres, booking and presenting organizations, universities, and individual producers. Located throughout thirty-three states and six countries, member companies vary substantially in size, structure, and purpose, reflecting the increasing diversity of the field. Their common bond is a shared commitment to preserve and enhance this uniquely American art form.

Actors' Equity  
Association



Actors' Equity Association (A.E.A.), founded in 1913, represents more than 45,000 actors and stage managers working in theatres across the U.S. Equity negotiates wages and working conditions, and provides benefits, including health and pension plans, for its members. Equity's mission is to advance, promote, and foster the art of live theatre as an essential component of our society. Wherever professional theatre exists, Equity exists.



**CONSULTING, LLC**

## SOIL FERTILITY PROGRAM

(800) 879-2297

WINDSOR, ILLINOIS



Oakland  
(888) 305-4411

Bloomington  
(888) 879-2297

Montrose  
(888) 732-2530

McLeansboro  
(618) 643-4060

Hull  
(217) 656-3474

Bloomington  
(877) 776-2240

Now offering

# mulch & firewood



[www.centralwoodproducts.com](http://www.centralwoodproducts.com)

1300 E Road, Sullivan, IL • [217] 728-4412



DOORS OPEN AT 4:30 GAMES BEGIN AT 6:00  
20 GAMES WITH A CASH PAYOUT OF OVER \$2,800.00  
SUPPORTING SERVICES FOR PEOPLE WITH DISABILITIES

COME EARLY FOR DINNER AT THE LIGHTHOUSE CAFÉ

Location: Moultrie County Beacon, 401 West Water,  
Sullivan, Illinois 217/728-7396  
2 Blocks West of 1st Mid Illinois Bank



**theatre  
for young  
audiences**

...where stories  
come to life

**Ticket prices:  
Single...\$9**



Disney's  
**Alice in  
Wonderland**



**August 6-14**



All children's shows at 10:30 a.m.

**Box Office: 217-728-7375**



The Theatre For Young Audiences is sponsored  
in part by McDonald's of Sullivan.



# The Little Theatre On The Square's 2010 Donors General Operating Fund

**W**e wish to thank and acknowledge the following individuals, foundations and corporations who have made contributions to our general operating fund. Their generous support helps us to keep our ticket prices low, while keeping our production values at their highest levels possible. These are this year's donors as of press time.

**While we value the individuals and businesses who provide in-kind donations, this list consists of cash donations during this fiscal year.**

## **Directors (\$5,000+)**

Hydro-Gear, Sullivan  
Stanley & Bridget Van Hook, Sullivan

## **Stars (\$2,000-\$4,999)**

Agri-Fab, Inc., Sullivan  
John & Mary Ann Koucky, Decatur  
Dr. James K. & Karen S. McKechnie, Champaign  
Gary & Tess Melvin, Sullivan

## **Performers (\$1,000-\$1,999)**

Ken & Deb Best, Sullivan  
CF&H Insurance Agency, Inc., Sullivan  
Mary Lou & Don Dawson, Charleston  
Doug & Peg Schmalz, Decatur  
Ralph & Bonnie Scrimager, Mattoon  
Marilyn Sears, Shelbyville

## **Patrons (\$500-\$999)**

Charlie & Linda Adams, Mattoon  
Norman Brownback, Mattoon  
David Bruce, Springfield  
Rich & Sharon Buckler, Arthur  
Gery & Cherryl Conlin, Arthur  
Don & Carolyn Hackerson, Windsor  
Barbara and Robin Hall, Urbana  
Steve & Nancy Huckaba, Mattoon  
John Pruitt - Sullivan Auto Body

## **Benefactors (\$250-\$499)**

ADM Foundation  
Dr. & Mrs. Robert N. Arrol, Arcola  
AT&T Foundation  
Larry & Carol Bushu, Arcola  
Dick & Mary Droste, Charleston  
Ralph & Susan Elke, Effingham  
Todd Harris, Sullivan  
Robert Hayward, Decatur  
Bob & Debi Johnston, Decatur  
Janice K. Jones, Ramsey  
Larry & Marty Jones, Sullivan  
Randall & Patricia Kampfe, Decatur  
Dr. Philip & Peggy Kepp, Mattoon  
Charlene Oberlin, Effingham

## **Benefactors (continued)**

Ken & Jan Ozier, Mattoon  
Pearman Pharmacy, Paris  
Al & Kay Young, Charleston  
Dan & Diane Zerrusen, Teutopolis

## **Saints (\$100-\$249)**

Anonymous (2)  
Carolyn Boblitt, Bethany  
Doug & Sally Bock, Charleston  
David & Vickie Bowers, Lovington  
Sylvia Brinkoetter, Springfield  
Tim & Debi Buford, Mattoon  
Shirley Campton, Effingham  
Bob & Pat Cannon, Camargo  
Merle & Beverly Chapman, Shelbyville  
Barbara Clark, Decatur  
Donna Comerford, Witt  
Irma Conrad, Mount Zion  
J. Andrew Edwards, Tolono  
Duane & Bev Ehler, Thomasboro  
Pat Flaughner, Charleston  
Sean & Amy Flynn, Effingham  
Betty L. Glasscock, Gays  
Bob & Cathy Hagen, Sullivan  
Hewitt & Marilu Hafer, Arthur  
Ron & Nedra Hash, Findlay  
Norm Hatfill, Mattoon  
C. Michael & Beth Hewing, Teutopolis  
Joan Highland, Sullivan  
Stu & Carole Hott, Sullivan  
Vi R. Hubbell, Mattoon  
Marlene L. Kincaid, Toledo  
A Patron from Paris  
Howard W. & Rose M. Lawrence, Decatur  
William H. Leach & Jeanne Cox, Shelbyville  
Aileen Miller, Shelbyville  
Cheryl K. Miller, Decatur  
William Moran Equipment, Toledo  
Bill & Jill Morgan, Mattoon  
Bob & Lana Pancoast, Shelbyville

2010 Donors  
General Operating Fund

**Saints (continued)**

Bud & Lauri Pilling, Decatur  
Psi Iota Xi, Theta Psi Chapter, Bethany  
Jeffrey & Linda Rice, Windsor  
John & Nancy Royse, Sarasota  
Paul & Anna Jane Sager, Sullivan  
Terry & Maggie Salem, Mattoon  
Dave & Roz Sandage, Forsyth  
Yvonne Schroeder, Mattoon  
David Sexson, Decatur  
Diane & James Sipich, Tuscola  
Kermit Speer, Mattoon  
Lew & Patty Stiff/Doncaster, Mattoon  
Jan Sweet, Mount Zion  
Brian & Sara Titus, Mattoon  
Ron & Sandra Ware, Blue Mound  
Barry & Sue Williams, Cooks Mills,  
Mr. & Mrs. James W. Zindel, Decatur

**Guardians (\$50-\$99)**

Anonymous (6)  
Dennis Anderson, Gays  
Roger & Eileen Baker, Eureka  
Bartscht-Fischbach Insurance Co., Shelbyville  
Mark & Carol Bomball, Charleston  
Caterpillar Foundation  
Fran & Murray Choate, Charleston  
Beverly Dean, Arthur  
Donald & Karen Doty, Charleston  
Betty W. Drennan, Neoga  
Bill & Betty Earle, Urbana  
Robert V. & Geraldine M. Elder, Sullivan  
Sam & Sharon Gholson, Decatur  
Ramona Henricks, Cerro Gordo  
Nancy Hoover, Bloomington –  
    In Memory of Ted Streenz  
Dr. Edward & Barbara Hoppin, Mattoon  
Randy Kalal, Gays  
Harold & Janice King, Sullivan  
Rob & Mika McCall, Shelbyville  
Alan & Carol Meadows, Lovington  
Eleanor L. Means, Effingham  
Elsie Neal, Charleston  
Carol Nelson, Champaign  
Dan & Susie Niemerg, Dieterich  
Betty Sappenfield & Lisa Boyer, Arcola  
Maury Shepherd, Charleston  
Lester & Sharon Southard, Blue Mound  
Dorothy Stich, Macon  
Ken & Joan Struttman, Decatur  
Kathy Thomas, Sullivan  
Ramona Tomshack, Charleston  
Gregory & Mary Totel, Decatur  
Mary M. Waller, Decatur  
Bob & Ruth Werschey, Decatur

**Guardians (continued)**

Cynthia & Craig Wise, Effingham  
Ginger Yakey, Effingham  
Jan & Dave Young, Mattoon  
**Friends (\$25-\$49)**  
Anonymous  
Cathy Babbs, Charleston  
Carolyn Brown, Blue Mound  
Marilyn M. Brown, Decatur  
Vicki Buzzard, Beecher City  
Norma Jean Carter, Windsor  
John & Mary Cowger, Mattoon  
Marilyn Dufford, Sullivan  
Marilyn Fischer, Chrisman  
Mike & Melanie Gibala, Decatur  
Mike & Linda Grose, Sullivan  
Richard & Nancy Harrington, Sullivan  
Ann Heelen & Gibson, Springfield  
David Hellwig, Springfield  
Mr. & Mrs. William Hendrix, Mattoon  
Julie Howard, Effingham  
Deborah Howell, Arthur –  
    In Honor of My Friends Carol Fuller &  
    Carole Genta  
Max & Louanna Jaeger, Mattoon  
Gene & Bernita King, Elwin  
Barbara Lichti, Champaign  
Barbara Meurlot, Decatur  
Patricia Myers, Mt. Zion  
Betty Niesman, Decatur  
Neil & Eleanor Pistorius, Decatur  
Mary Ann Platt, Decatur  
Raymond & Sheila Renner, Stewardson  
Jane & Tom Rood, Shelbyville  
Wayne & Deb Rubach, Effingham  
Robert & Sandra Runge, Saint Peter  
Ed & Kay Schaller, Urbana  
Dallas & Nancy Seitz, Moweaqua  
Aileen & Al Sherline, Mattoon  
Louis Stanke, Mattoon  
Russ & Marge Stark, Charleston  
Scott & Jan Stevens, Charleston  
Glen & Dona Temple, Effingham  
Curt & Peggy Valenti, Effingham  
Susan & Greg Van Praag, Sullivan  
Dick & Mary Ward, Decatur  
Jean R. Weidner, Charleston  
Larry & Chris Wesch, Charleston  
Mary Willcockson, Springfield  
Gilbert & Sharon Wood, Decatur  
Bill & Sue Yocum, Charleston  
John Yoder, Arthur  
Richard & Pauline Zimmerman, Watson

## **New Adopt-A-Seat Donors**

Don & Judy Behl

Chris Benefiel

Stephanie Benefiel

Dr. Tom & Emilee Best

Tom & Kathy Bunfill

Robert V. & Geraldine M. Elder

Ron & Sandy Ellis - In Honor of Charles & Dolores Ginsburg

In Honor of Vivian S. & Gale H. Jones

Art & Cheryl Sappington - In Memory of Ruth E. Robb

J. Sain

Tim & Julie Wilkerson - In Memory of Ralph & Madonna Ohm



## *The Coffee Bean*

*On The Square In Sullivan*

*Cool down this summer at the Coffee Bean*



***Located on the main floor at Dickens Studio of Photography***

***Cappuccinos***

***Lattes***

***Mochas***

***Chai Tea***

***Smoothies***

***Frappuccinos***

***Flavored Coffees***

***Tea Breezers***

***Hand Dipped Ice Cream***

***Sundaes***

***Desserts***

***Sandwiches***

***Paninis***

***Salads***

***Soups***

***Lunch Boxes***

*Cook Out Every Wednesday At Lunch*

*Biscuits & Gravy Every Friday Morning*

*Call In Your Order Ahead Of Time For Quick Pick Up*

*Hang Out In The Air Conditioning*

*Play A Game With Your Family*

***Hot Drinks***

***Warm People***

***Cool Place***

217. 728. 2578

*Dickens Studio of Photography*

*Full Portrait Studio and Processing Lab*

217.728.2327

*Two East Harrison in Sullivan*

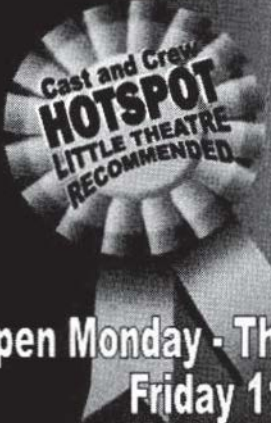
*Located west of The Little Theatre*

*Where Moments In Time Stand Still*



# Las Patras

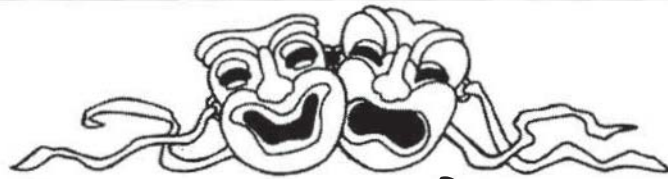
Restaurante Mexicana



**WALK-INS and  
RESERVATIONS WELCOME**

Open Monday - Thursday 11:00am - 2:30pm and 5:00 - 9:00pm  
Friday 11:00am - 2:30pm and 5:00 - 9:30pm  
Saturday 11:00am - 9:30pm Closed Sunday

9 South Main Street, Sullivan, IL Phone: 217-728-8800



## Star Performers

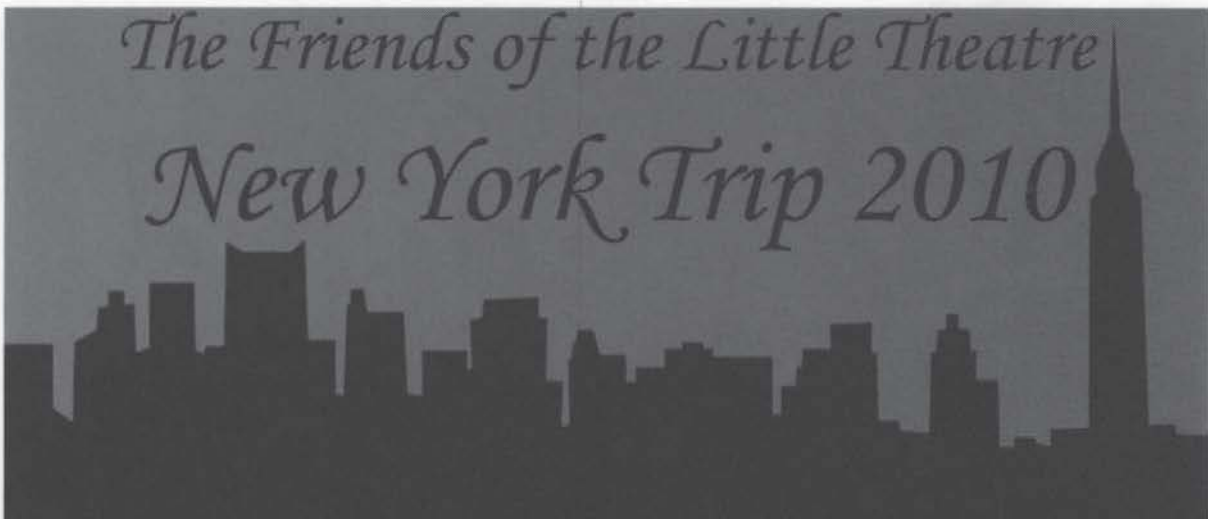
**THANKS FOR ANOTHER  
GREAT SEASON!**

Member  
F.D.I.C.  
**1st** **FIRST NATIONAL  
BANK**  
OF SULLIVAN, ILLINOIS 61951

217-728-4302



While you're in Sullivan, use our conveniently located drive-up ATMs.



*The Friends of the Little Theatre  
New York Trip 2010*

*October 6-11, 2010*

*Accommodations:*

*NYC, Hilton Manhattan East*

*(Rooms are double occupancy, unless otherwise specified)*

*Travel Arrangements:*

*55 Passenger Motor coach*

*(Bathroom included, reclining seats).*

*Entertainment:*

*3 Broadway shows*

*(Billy Elliot, A Little Night Music, Addams Family)*

*4 delicious NYC dinners*

*A TLTOT'S Alumni gala*

*3 days of scheduled activities*

*(including a trip to the Statue of Liberty, Ellis Island, and Central Park.)*

*Approximate Price:*

*\$1500*

*Registration Deadline:*

*August 9 (\$750 due)*

*Information subject to change  
Call Joel at 217-728-2065 or John to sign up.*

# The Friends of The Little Theatre

- Would you like to take a backstage tour of The Little Theatre?
- Would you like to have a voice in picking next year's Little Theatre productions?
- Would you like to attend private parties where you could meet the cast and crew of theatre productions?
- Would you like an invitation to dress rehearsals?

If you answered yes to any of these, then you should become a Friend of The Little Theatre now.

Our Friends of The Little Theatre annual donors are vital to the mission of the Little Theatre: To produce Broadway-caliber shows and to reach out to enrich over 25,000 young lives with the experience of musical theatre in their schools. With your help, we will ensure that The Little Theatre will remain a vibrant part of Central Illinois for years to come.



Each of our individual giving levels offers a menu of benefits designed to enhance your theatre going experience. These benefits are just some of the many ways we say "thank you" to our supporters for valuing The Little Theatre.

## The Friends of The Little Theatre Individual Giving Levels

LEVEL	Advance Notice	Special Event Invites	Talkback Sessions	Opening Night Parties	Season Selection Meetings	Founder Reception	Tour Of Theatre	Dress Rehearsal	Memorabilia	Cocktail Party
PATRON	*									
FAN	*	*	*	*						
BACKER	*	*	*	*	*					
DIRECTOR	*	*	*	*	*	*				
PRODUCER \$2,500-\$4,999	*	*	*	*	*	*	*	*	*	
FOUNDER \$5,000 +	*	*	*	*	*	*	*	*	*	*

**Patron - \$100-\$249:** Exclusive Advance Notice (Electronic) of New Performances and the opportunity to buy tickets before they are released to the general public. Recognition in the online edition of our yearly Honor Roll edition of our online newsletter BackStage Pass.

**Fan - \$250-\$499:** The above plus Invitation to Friends Only events. Examples are the Friends Meet the Cast parties, Talk back sessions, Opening Night parties, Announcements of New Season parties and travel club. Includes listing in playbill.

**Backer - \$500-\$999:** The above plus Invitation to help select next years' productions at the Friends Annual Productions Preview Party with the Executive and Artistic Directors.

**Director's Circle - \$1,000-\$2,499:** The above plus Invitation to Artist or Founder Reception in the theatre (for 4). Invitation to Opening Night Party and Closing Season Party.

**Producer's Circle - \$2,500-\$4,999:** The above plus backstage Tour (for 4), Invitation to Dress Rehearsal (for 4), Receive Autographed Memorabilia.

**Founder's Circle - \$5,000 and up:** The above plus the coveted opportunity to host a theatre cocktail party for up to 20 guests. (date mutually agreed upon)

Director, Producer and Founder donations can be made quarterly through ACH transfers.

DONATE ONLINE!

Go to our website [www.thelittletheatre.org](http://www.thelittletheatre.org) It's never been easier to donate!



# Members of the 2010 Friends of The Little Theatre

**I'm a  
Friend  
are you?**

## **Founder's Circle (\$5,000+)**

Stanley & Bridget Van Hook

## **Producer's Circle (\$2,500-\$4,999)**

Steve & Debbie Benefiel

Ralph & Barbara Kirk

Nina & Philip Martin

## **Director's Circle (\$1,000-\$2,499)**

Charles & Linda Adams

Ron & Sandy Ellis

Gary & Tess Melvin

Loren & Patty Pilcher

John & Kim Schwalbach

Dennis Williams

## **Backer (\$500-\$999)**

Anonymous

Dr. & Mrs. Robert Arrol

Tom & Kathy Bunfill

Bruce & Mary Beth Condill

David Hellwig

Mike & Laura Martin

Pauline Rowles

J. Sain

## **Fan (\$250-\$499)**

Central Illinois Physical Therapy

Gery & Cheryl Conlin

Terry & Kathy Davis

Mary Lou & Don Dawson

Dick & Mary Droste

Dr. Garry E. Ernst & Janet E. Ernst

John & Cindy Funk

Betty L. Glasscock

Mary Ann Hargis

Bob & Debi Johnston

Carolyn Johnston

John Mulherin

Marcia & John Phillips

John K. & Helen Krehbiel-Reed

Susan & Sheryl Snyder

Kermit Speer

Shirley & Paul Stanley

Lew & Patty Stiff

## **Fan (Continued)**

John & Jo Swick

Roger & Vema Tice

Bob & Lucy Walker

Ron & Sharon White

Kevin & Alison Wirth

## **Patron (\$100-\$249)**

Gene & Jenny Barkley

Ronald E. & Carol Batterham

Doug & Jan Belles

Book Group of Evanston -

In Honor of Nina Tabor Martin

David & Vickie Bowers

Melanie Bowers

Alora J. Bowles

Lloyd & Lois Budde

Robert & Patricia Cannon

Shirley Campton

Merle & Beverly Chapman

Donna Comerford

Richard W. Dettling

Kathy Evans

Dr. & Mrs. Don A. Fischer

Jim & Betty Fletcher

Norm Hatfill

Joan Highland

Dr. William Hill

Mark & Ann Jackson

Dick & Barbara Jostes

Jack & Joan Klay

Jerry & Roberta McRoberts

Bob & Betty Miller

Kathie & Kelly Price

Rick & Ruth Rhodes

Bob & Susan Riggert

Paul & Anna Jane Sager

David Sexson

Kathlene & Douglas Shank

Dick & Loretta Volker

Marlene, Anjie & Lexi Walker

John & Phyllis Walstrom

Evelyn Wayne

Betty Zeaman

**Friend (\$25-\$99)**

Anonymous  
Randy & Marcy Baird  
George & Winona Bolinger  
Helen R. Brown  
Andrea Buchanan  
Marilyn Fisher  
Susan Grant & Mike Reynolds  
Allan Gossmann  
Dick & Nancy Harrington  
Fred & Betty Harshbarger  
Dale & Gretta Kearney  
Bud & Jene Lybarger  
Nancy Mains  
Paul Mullinax  
Patricia Myers  
Jim & Nancy Nelson  
Karen Noffke  
Neil & Eleanor Pistorius  
Jim & Rita Rossi  
Nancy Tennant  
Dee & Don Wenneker  
William & Karen Wilkinson  
Harold & Nadine Wilkey  
Ken & Maybelle Wooddell  
Bill & Sue Yocum  
Monica & Jack Zeigler  
Richard & Pauline Zimmerman

*Friends of The Little Theatre*  
2010 Registration Form

Name: \_\_\_\_\_

Spouse Name: \_\_\_\_\_

Address: \_\_\_\_\_

City: \_\_\_\_\_ State: \_\_\_\_\_ Zip: \_\_\_\_\_

Phone: \_\_\_\_\_

Email: \_\_\_\_\_

Name(s) as you wish to be recognized in programs: \_\_\_\_\_

I would like my gift to remain anonymous.

**Gift Level:**

- Patron \$100-\$249
- Fan \$250-\$499
- Backer \$500-\$999
- Director's Circle \$1,000-\$2,499
- Producer's Circle \$2,500-\$4,999
- Founder's Circle \$5,000 & up

**Payment Options:**

- Check Enclosed  
(Payable to The Little Theatre On The Square)
- Monthly Electronic Bank Transfer (EBT)  
Please send me information on signing up for EBT.
- Charge my credit card:

Visa  Mastercard  AMEX  Discover

Credit Card #: \_\_\_\_\_

Expiration Date: \_\_\_\_\_ Verification Code: \_\_\_\_\_

Signature: \_\_\_\_\_

**Matching Gift Plan:**

This gift will be matched by my employer.

Company Name: \_\_\_\_\_

Please check your employer's matching gift requirements since some companies do not match all gifts.

**Send to: The Little Theatre On The Square  
c/o Friends of The Little Theatre  
P. O. Box 288  
Sullivan, Illinois 61951  
217-728-2065**



Legacy  
Society



ON THE SQUARE  
THE LITTLE THEATRE  
SQUARE  
ON THE SQUARE  
THE LITTLE THEATRE

## *The Little Theatre's Legacy Society*

### **Planned Giving**

The Legacy Society was created at the Little Theatre to recognize those individuals who share our passion for the American musical and are interested in helping to secure the Little Theatre's future. Planned gifts are vital to supporting the theatre's mission in all aspects of our operation—from actor's salaries and production costs to our education and outreach programs. The theatre has a huge financial impact on Sullivan and the entire Central Illinois area, and a planned gift to the theatre is a way of leaving a legacy that can benefit thousands of area people.

By providing for the theatre in your estate plan, you can help also preserve the beauty and magic of this cultural treasure. And, by supporting the theatre's educational activities, you are reaching thousands of children with your planned gift.

### **Benefits of Membership:**

An invitation to a spring luncheon with members of the Board of Directors, Executive Director, Artistic Director and other Legacy Members.

Membership in the Friends of the Little Theatre at the Founder's Circle level. This entitles you to all of the benefits of the Founder's Circle including invitations to "Friends Only" functions and parties, backstage tours, receptions and an invitation to the Friends Only Preview Party to help select each year's new productions.

Recognition in programs and on the theatre's website.

To join The Legacy Society: Simply inform us in writing that you have included the theatre in your will or living trust and you will have immediate membership in the Legacy Society. (application form available on the back of brochure)



*The Legacy Society*  
**Member Information**

I am/We are pleased to accept membership in *The Legacy Society* of The Little Theatre.  
 I/We understand that membership is based on information provided about my/our future gift to the Little Theatre.

Name(s) \_\_\_\_\_ Birthdate \_\_\_\_\_

Address \_\_\_\_\_

City \_\_\_\_\_ State \_\_\_\_\_ Zip \_\_\_\_\_

Daytime Phone \_\_\_\_\_ Evening Phone \_\_\_\_\_

Email \_\_\_\_\_

The Little Theatre will be pleased to recognize your *Legacy Society* membership in its programs and donor wall. If you would prefer anonymity, please indicate below.

I/We would prefer to be anonymous in publications but accept the other membership benefits.

**Please complete the following for our records.**

The Little Theatre has been included in my/our:

- Will
- Living Trust

The Little Theatre has been named as a beneficiary of my/our:

- Retirement Plan
- Life Insurance Policy
- Other

To help make certain The Little Theatre can fulfill your intentions when your gift is received, it is helpful for us to know the purpose of your gift and the approximate amount.

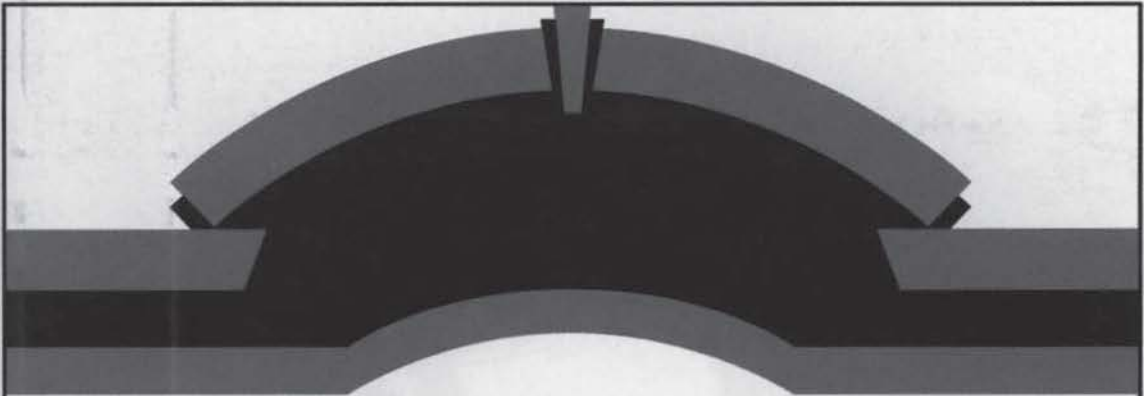
- Unrestricted to provide maximum flexibility for The Little Theatre to pursue its mission.
- Restricted for the following theatre priority:

	Approximate
Amount _____	
Signature _____	Date _____
Signature _____	Date _____

We would appreciate receiving a copy of the relevant portions of legal documents relating to your intended gift or a letter from your legal or financial advisor that describes the nature and purpose of the gift.

Please return completed form to John Stephens, Executive Director, The Little Theatre, 16E Harrison Street, Sullivan, Illinois 61951





SUPPORTING  
**THE  
LITTLE  
THEATRE  
ON THE SQUARE,  
SEASON AFTER SEASON.**

Your friends at

**Agri-Fab**<sup>®</sup>  
*Tough Tools - Season After Season™*

[www.agri-fab.com](http://www.agri-fab.com)



*Sullivan*

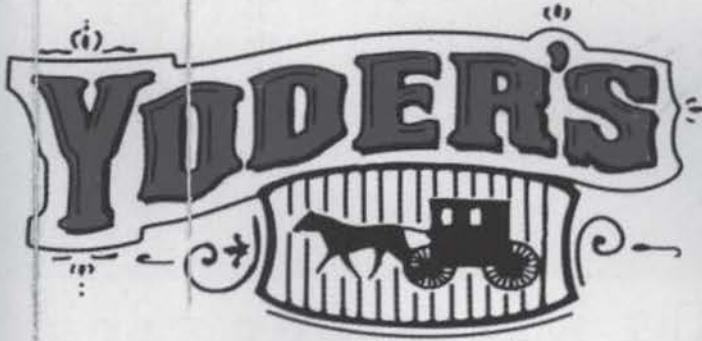
**IGA**®

**Hometown  
Proud**



**OPEN 7 DAYS A WEEK  
6:00AM - 10:30PM**

431 S. Hamilton Street, Sullivan, IL 61951  
Phone: 217-728-8366



**AMISH  
HANDCRAFTED  
FURNITURE**



**1476 Co. Road 1025 East, North Market Street  
In Sullivan, IL 61951**

**Open Monday - Saturday 10am - 5pm**

**Phone: 217-728-2166**

---

**Hungry for Old School Cooking?**

**AMISH MEALS**

**hand-prepared from classic recipes,  
served in our homes.**



**by reservations only  
217-728-4961**

*Doug Wilson's*

Doug invites you to come try our new menu at

# JIBBY'S

R E S T A U R A N T & B A R

*Come see us before or after the show and check out the history of the Little Theater on Jibby's gallery of the stars.*

---

## AMERICAN CUISINE

WINE & MARTINIS

---

*Serving 41 specialty martinis, an extensive wine list and divine desserts*



---

19 MAIN STREET, directly north of THE SQUARE

RESERVATIONS 217 728 7112

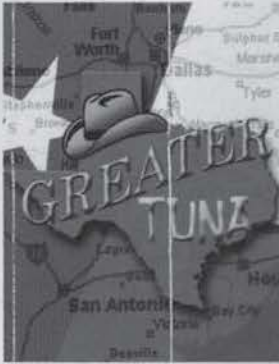


**2010-2011  
Fall/Winter /Spring  
Tickets  
On Sale Now!**



**217-728-7375**

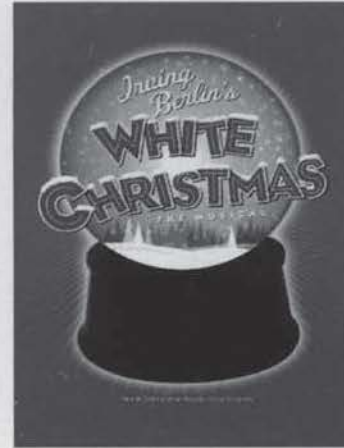
**Adults - \$30  
Seniors/Children - \$28**



**October 1-10, 2010  
Starring Jack Milo &  
Michael Weaver**

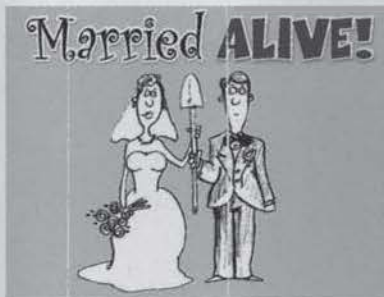


**Oct 29-Nov 7, 2010**

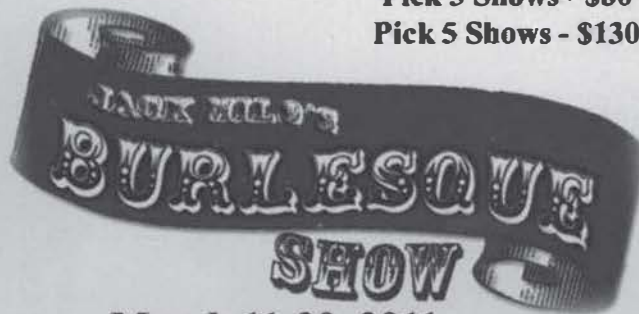


**December 10-19, 2010**

**Season Ticket Prices  
Pick 3 Shows - \$80  
Pick 5 Shows - \$130**

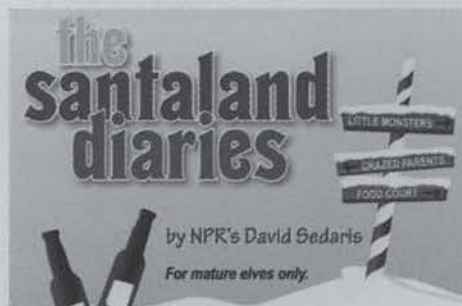


**February 11-20, 2011**



**March 11-20, 2011**

The Santaland Diaries  
is not part of the 2010-  
2011 Season Ticket  
package



**December  
3-5, 2010**

**1 weekend only  
Fri, Dec 3 - 8 pm  
Sat, Dec 4 - 8 pm  
Sun, Dec 5 - 2 pm**

**All Tickets - \$15**

**Call The Box Office at 217-728-7375  
visit us online at [www.thelittletheatre.org](http://www.thelittletheatre.org)**

# Thank You...

to the cast, crew and staff  
of **The Little Theatre**,  
for entertaining and amazing  
us during another spectacular  
season of performances!

Visit us Online at  
**www.firstmid.com**  
for all your financial needs.



*Because You Expect More.*

Member FDIC  
Equal Opportunity Lender