

Eastern Illinois University

The Keep

1959 Shows Programs

1959

Summer 7-7-1959

Guys and Dolls

Little Theatre on the Square

Follow this and additional works at: https://thekeep.eiu.edu/little_theatre_1959_programs



Part of the [Theatre History Commons](#)

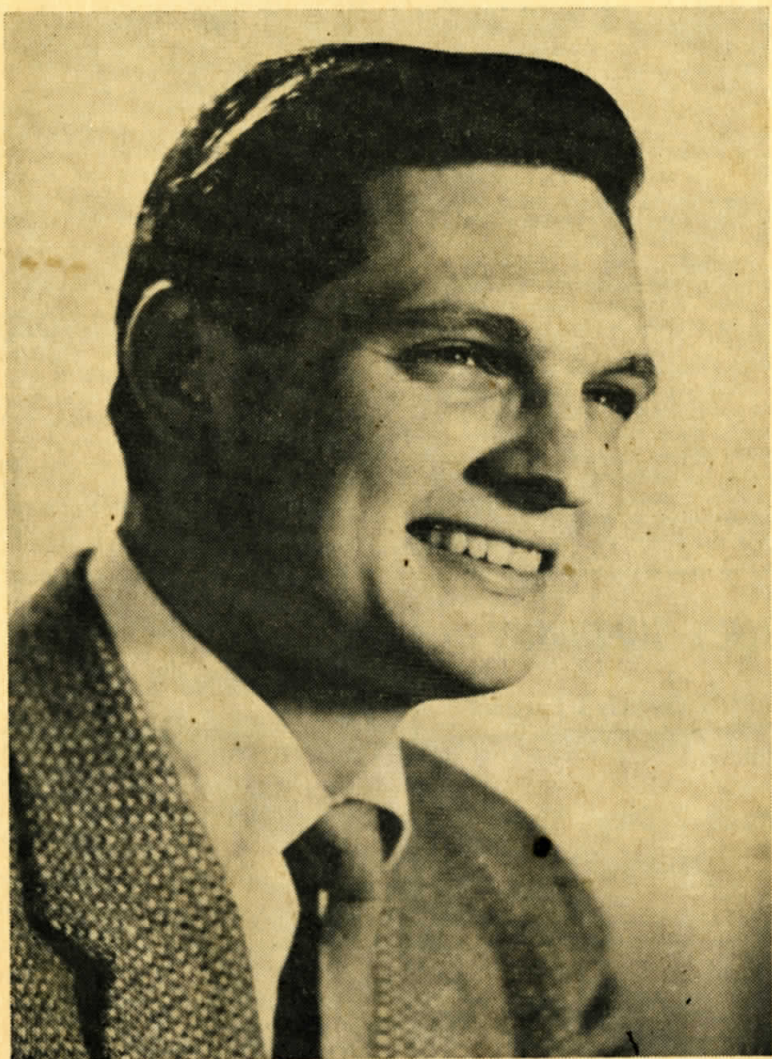
Recommended Citation

Little Theatre on the Square, "Guys and Dolls" (1959). *1959 Shows Programs*. 8.
https://thekeep.eiu.edu/little_theatre_1959_programs/8

This Book is brought to you for free and open access by the 1959 at The Keep. It has been accepted for inclusion in 1959 Shows Programs by an authorized administrator of The Keep. For more information, please contact tabruns@eiu.edu.

Summer of Musicals

Grand Theatre—Sullivan, Illinois



Alan Alda in

"GUYS AND DOLLS"

July 7 through July 12 1959

Who's Who in the Cast . . .

ALAN ALDA (Sky) appears at the Grand in the role which his father, Robert Alda, created in the original Broadway production. This talented young actor has appeared often on such television shows as *The Phil Silvers Show*, *The Sam Levenson Show* and *The Peter Lind Hayes Show*. During the past winter at the Cleveland Playhouse, he starred in *Who Was That Lady I Saw You With*, *Monique* and his own adaptation of *The Book of Job*. In Summer stock, Mr. Alda has appeared as Artie Strouss in *Compulsion* with Howard Da Silva, with Martyn Green in *Visit to a Small Planet* and in *The Little Foxes* with Ruth Chatterton. Among his other stock credits are *Roger the Sixth* with Dorothy Lamour and *Three Men on a Horse* with Robert Alda. He also appeared with his father in *Room Service* in Rome, Italy. In addition to his television and off-Broadway credits in New York, Mr. Alda was under study to Don Murray in *Hot Corners* on Broadway. Among his many roles are Jack Chesney in *Charlie's Aunt* and the leading role in *To Dorothy a Son*.

SID MAYER (Nathan) started his professional career as a magician. He has appeared in major night clubs and theatres throughout the country. In addition to many radio and television appearances, Mr. Mayer has been seen in stock, repertory and legitimate theatre both in the East and in the Midwest. In the Chicago area, he has appeared often at Music Theatre, Drury Lane, Shady Lane and the Edgewater Beach

Playhouse. At Shady Lane, he was recently featured as Harvey Gruber in *Drink To Me Only*. He was seen with Henry Morgan in *Father of the Bride*, in *Anniversary Waltz* with Jeffery Lynn and with Tom Duggan in *The Show-Off*.

GRETA WOLFF (Sarah) has recently been featured with the New York City Center Opera Company in *Street Scene* and *The Ballad of Baby Doe*. Chosen for the Metropolitan Opera Auditions of the Air, Miss Wolff has appeared with the Met company as Ninetta in *La Perichole*. In the musical comedy field, she has toured with Brigadoon and with Harry Belafonte in *Sing Man Sing*. In addition, she has appeared in operetta off-Broadway and as Meg in *Damn Yankees* at the Lambertville Music Circus. Her television credits include NBC's *Tonight Show*.

DICK SASSO (Nicely-Nicely) was seen in the Chicago area as Nicely-Nicely Johnson in the Music Theatre Workshop production of *Guys and Dolls*. With that same group he appeared in *The Hot Drunkard* and as Wreck in *Wonderful Town*. At the Edgewater Beach Playhouse, he was seen with Burgess Meredith in *The Circus of Dr. Lao*. As a singer, Mr. Sasso has played The Boulevard Room of the famous Conrad Hilton Hotel in Chicago, and appeared at many state fairs in the outdoor extravaganza, *West-O-Rama*. In addition, he has played major night clubs throughout the midwest and just before coming to the Grand completed an engagement at the Chase Hotel in St. Louis.

KEN'S SUPERWAY

Moultrie County's Largest
Food Store

Open 7 Days Until
Midnight

Compliments of Reed's Sullivan Greenhouses, Inc.

We Are Your FLORIST'S
TELEGRAPH DELIVERY
FLORIST
Phone 4216 408 E. Water

Courtesy of

Sangamon Grace Ammonia Co. Fertilizer

417 S. Oakland — Decatur

SULLIVAN PLANT
Phone 4121

LOVINGTON PLANT
Phone 76

Guy S. LITTLE, JR.

PRESENTS

GUYS & DOLLS

A Musical Fable of Broadway

Based on a story and characters by Damon Runyon

Book by
ABE BURROWS and JO SWERLING

Production Directed by
SIDNEY EDEN

Designed and Lighted by
ANDREW GREENHUT

Choreography by
JOEL SCHNEE

Musical Direction by
EDDIE McCARTY

Musical Numbers Staged by
JOEL SCHNEE and SIDNEY EDEN

Music and Lyrics by
FRANK LOESSER

Costumes by
JESSIE

CAST

NICELY-NICELY JOHNSON	Dick Sasso
BENNY SOUTHSTREET	Jim Shea
RUSTY CHARLIE	Jan Munch
SARAH BROWN	Greta Wolff
ARVIDE ABERNATHY	Norman Bacon
MISSION BAND	{ Calvin Jon Frosher
	{ Agatha Clare Johnson
	{ Martha Myrna Ems
HARRY THE HORSE	Dick Lamb
LT. BRANNIGAN	John Kelso
NATHAN DETROIT	Sid Mayer
ANGIE THE OX	Larry Hodges
JOEY BILTMORE	Dick Stephens
MISS ADELAIDE	Jerili Little
SKY MASTERSON	Alan Alda
MIMI	Jeannie Hotard
GENERAL MATILDA B. CARTWRIGHT	Inis Little
BIG JULE	Robert Gwaltney
DRUNK	Dick Stephens
WAITER	Larry Hodges
M. C.	Dick Stephens
HOT BOX GIRLS Betty Chambers, Judy Runyon, Judy Bartlett, Jeannie Hotard	
MALE DANCERS Jerry Taflinger and Dick Stephens	

GUYS AND DOLLS is presented through special arrangement with Music Theatre Inc., 119 West 57th Street, New York. N. Y.

CANDYLAND CAFE

First Door West of Theatre

Air Conditioned
Dining Room Service

**Steaks, Seafood,
Luncheons**

Enjoy Good Food in a Friendly
Atmosphere

Compliments of
**BROWN
SHOE COMPANY**
Sullivan, Ill.

Synopsis of Scenes

ACT ONE

- Scene 1. Broadway.
- Scene 2. Interior of the Save-A-Soul Mission.
- Scene 3. A Phone Booth.
- Scene 4. The Hot Box.
- Scene 5. Off Broadway.
- Scene 6. Exterior of the Mission. Noon, the next day.
- Scene 7. Off Broadway.
- Scene 8. Havana Cuba.
- Scene 9. Outside El Cafe Cubano. Immediately following.
- Scene 10. Exterior of Mission.

ACT TWO

- Scene 1. The Hot Box.
- Scene 2. The West Forties.
- Scene 3. The Crap Game.
- Scene 4. Off Broadway.
- Scene 5. Interior of the Save-A-Soul Mission.
- Scene 6. Near Times Square.
- Scene 7. Broadway.

A F C O

Heating—Air Conditioning

Engineered Heat Co.

18 West Harrison Sullivan
Phone 3176

Sheet Metal Roofing

Russell M. Harshman Co.

Sullivan, Ill. Phone 4235

**READY MIXED CEMENT
CONTRACTORS**

Basements, Walks, Drives,
Foundations and Patios
Floors, Porches and Steps

Compliments of A & W Drive-In

After the Show—Drive in for
Fast Service on All Kinds of
Sandwiches and Cold Drinks.

Jct. 121 and 32

Rhodes Lumber Co.

**Lumber—Roofing
Cement**

Paint—Hardware

1117 W. Jackson St.
Sullivan, Ill.

Everything to Build Anything

Gauger Lumber Co.

Musical Numbers

ACT ONE

Opening	Ensemble
Fugue for Tindhorns	Nicely-Nicely, Benny, Rusty Charlie
Follow the Fold	Sarah, Arvide, Calvin, Agatha and Priscilla
The Oldest Established	Nathan, Nicely-Nicely, Benny, and Ensemble
I'll Know	Sarah and Sky
A Bushel and a Peck	Adelaide and Hot Box Girls
Adelaide's Lament	Adelaide
Guys and Dolls	Nicely-Nicely and Benny
Havana	Dancers and Chorus
If I Were a Bell	Sarah
My Time of Day	Sky
I've Never Been in Love Before	Sarah and Sky

ACT TWO

Take Back Your Mink	Adelaide and Hot Box Girls
Reprise: Adelaide's Lament	Adelaide
More I Cannot Wish You	Arvide
The Crap Game Dance	Dancers and Chorus
Luck, Be a Lady	Sky and the Crap Shooters
Sue Me	Nathan and Adelaide
Sit Down, You're Rockin' the Boat	Nicely-Nicely and Ensemble
Reprise: Follow the Fold	Mission Meeting Group
Marry the Man Today	Adelaide and Sarah
Reprise: Guys and Dolls	Entire Company

Welborn's Rexall Drug Store

Prescription Service
Free Delivery

Spice Island Spices
Fannie May Candies

Second Door West of Theatre

S. D. CUMMINS

Sullivan's Oldest Hardware Store

Paints, Electrical
Supplies, Plumbing

Phone 3123

East Side Square

MOTEL MILROY

MILDRED AND ROY PICKEN, Props.

Rts. 121 and 32

Box 266

Sullivan Ill.

L. W. McMullin Funeral Home

Dial 4100

Sullivan, Ill.

INSURANCE CLAIMS

—can be handled without red tape or delay when you insure with your local independent agent.

Wood Insurance and Realty Co.

7 West Harrison St. — Sullivan

"Y" Drive-In

Air Conditioned Dining Room
Seating Capacity 100

Chicken Family Style
Steaks, Chops, Seafood

Jct. 121 and 32

Hardware State Bank

LOVINGTON, ILL.

Always
Courteous Service

Grow—Grow—GROW with



Liquid...

FERTILIZER

The largest producers of complete Analysis Liquid Fertilizer in the U.S.

PLANTS LOCATED AT

SULLIVAN—HARVEL—ROCHESTER—EL PASO, ILLINOIS

Next Week — July 14-July 19
"The Student Prince"

Starring
CHARLES RICH and GRETA WOLFF

Production Staff

STAGE MANAGER Bob Fahey
ASSISTANT CHOREOGRAPHER Betty Chambers
PROPERTIES Jim Shea
LOBBY DECOR AND ADVERTISING ART Dick Stephens
ASSISTANT DIRECTOR Guy S. Little Jr.
PROGRAM EDITOR John Kelso
ORCHESTRA Eddie McCarty, Sandra York, Frank Post, Jean Ann Dunphy

Fabrics for Kismet by Michael Bartlett. Spinnet pianos used through the courtesy of Samuel Music Co., Effingham, Ill. Dressing rooms courtesy of Best Clinic.

SHELBY'S CAFE

Smorgasbord—Short Orders

Half Block East of Southeast Corner Square

8:30 A.M. to 8:30 P.M.

**DUNSCOMB'S
FURNITURE**

Everything for the Home

NEAR THE THEATRE
SULLIVAN

Moultrie County News

FIRST in
Circulation

FIRST in
Advertising Lineage

FIRST in
News Coverage

IN MOULTRIE COUNTY

**SULLIVAN GRAIN COMPANY
ELEVATORS**

EAST END ELEVATOR Sullivan

WEST END ELEVATOR Sullivan

MACON GRAIN CO. Macon

LAKE FORK ELEVATOR Mt. Pulaski

Grain—Coal—Cob Litter—Mulch

First
National Bank
of
Sullivan

"Always A Friendly Welcome"

MEMBER F.D.I.C.