

6-19-1986

## Daily Eastern News: June 19, 1986

Eastern Illinois University

Follow this and additional works at: [http://thekeep.eiu.edu/den\\_1986\\_jun](http://thekeep.eiu.edu/den_1986_jun)

---

### Recommended Citation

Eastern Illinois University, "Daily Eastern News: June 19, 1986" (1986). *June*. 2.  
[http://thekeep.eiu.edu/den\\_1986\\_jun/2](http://thekeep.eiu.edu/den_1986_jun/2)

This is brought to you for free and open access by the 1986 at The Keep. It has been accepted for inclusion in June by an authorized administrator of The Keep. For more information, please contact [tabruns@eiu.edu](mailto:tabruns@eiu.edu).



## Inside Showtime!

Summer Entertainment reviews  
Guys and Dolls.  
See page 7



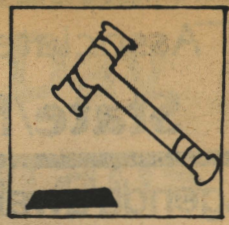
## Pro Ball!

Will San Antonio give Sir Duck a weight clause—ala the Fridge?  
See page 12



## Justice?

Burger quits and Reagan appoints successor. Read our opinion.  
See page 4



# The Summer Eastern News

Thursday, June 19, 1986

... will be mostly sunny and hot, high around 90. Thursday night, fair warm and humid, low around 70.



A.L. LANDERS/ Staff photographer

## Old Glory

Girls Staters fold the U.S. flag during their evening flag ceremony. The last day for the about 500 Girls Staters will be Saturday.

## House unexpectedly votes for divestment

WASHINGTON (AP)—The House unexpectedly approved on Wednesday legislation calling for withdrawal of U.S. business investment in South Africa and an all-out trade embargo, the harshest sanctions yet proposed against the white-minority Pretoria government.

The punitive steps approved by voice vote on a substitute amendment for the Anti-Apartheid Act of 1986 came at a time of rising indignation in Congress over apartheid in South Africa.

In approving the substitute for a measure which had been crafted by the House Foreign Affairs Committee, the lawmakers ignored a last-minute letter from national security adviser John Poindexter, who argued that punitive sanctions would cripple U.S. diplomacy and "strengthen the hands of extremists."

The vote came after Rep. Ronald Dellums, D-Calif., said the crisis in South Africa calls for the abandonment of timidity. The bill approved was a Dellums amendment which substituted for language developed by members of the committee. The panel's bill would have imposed a measured and incremental set of sanctions. The revised bill was passed when Republicans did not demand roll call votes, and some lawmakers said they saw that as an attempt to ultimately prevent any sanctions from actually being imposed.

Dellums had called on the House to discard halfway measures and to adopt "an all out, powerful, aggressive statement."

"I'm going to have a heart attack," an astonished Dellums said after the

vote. He said he thought the Republicans did not ask for a roll call vote because "the momentum is on our side. The Republicans don't have the numbers to wreck this legislation."

Rep. William Gray, D-Pa., proclaimed: "this is historic; the House just voted total divestment."

"I'm delighted, but somebody missed a signal," exclaimed Rep. Parren Mitchell, D-Md.

The vote came during the week which marks the 10th anniversary of riots in the black township of Soweto, an event seen as a benchmark in the history of South Africa's black majority's resistance to apartheid.

If adopted by the Senate and signed into law by President Reagan, the bill would order all U.S. companies out of South Africa within 90 days and impose a total trade embargo.

The vote came as a surprise because it authorized sanctions far more strict than those which initially had been debated by House members.

House Speaker Thomas P. O'Neill Jr., D-Mass., had said earlier he had the votes not only to pass the sanction bill, but to override a presidential veto should that prove necessary.

Supporters of the sanctions measure including Rep. Howard Wolpe, D-Mich., said it is essential for Congress to affirm "that we will no longer be an accomplice to apartheid."

But opponents said sanctions will merely increase the intransigence of South Africa's white minority government, cause thousands of blacks to lose their jobs, fan violence and increased prospects for "a blood bath" and an eventual communist takeover.

## No drastic changes

# Chief justice's resignation surprises nation

By LARRY SMITH  
Staffwriter

Supreme Court Chief Justice Warren E. Burger caught the nation by surprise with his resignation, but it won't have much of an effect, an Eastern political science instructor said Wednesday.

President Reagan announced Burger's resignation Wednesday and submitted the nomination of Justice William Rehnquist for chief justice. Reagan also nominated U.S. Court of Appeals judge Antonin Scalia for associate justice.

Peter Leigh, pre-law advisor and political science teacher at Eastern, said he was surprised by the Burger's resignation, but thought Reagan's nominations should not change the court's balance.

"Rehnquist pretty much replaces Burger, they have the same conservative ideology," Leigh said. He also said that Scalia would bring the same ideology to the court as Rehnquist.

The 1981 appointment of Sandra Day O'Connor to the court was more significant not because she was

a woman but because she replaced a middle of the road ideology in justice Potter Stewart with a conservative ideology like Reagan's, Leigh said.

Leigh said the significance of the two appointments, possibly three if another vacancy opens, by Reagan is that his judges might be handing down decisions into the next century.

The court during the Burger era tried to roll back the excessive decisions of the preceding Warren court era, Leigh said. "The Warren court was much more an activist court, more likely to strike down a law and reshape the court system, such as the 1966 Miranda decision," he said.

Leigh said that the Burger court was less of an activist court and more restrained judicially. Adding the court has not seen the necessity of taking the activist role, because questions that come to the court are more narrow now than in the 1960's.

He also said the country was reshaping itself during the Warren era and the court was a reflection of that.

The court has been much more fragmented and Rehnquist should be able to mold the court effectively and bridge the different ideologies, Leigh said.

The new appointments should not effect the court's position on the landmark 1973 Roe vs. Wade decision that invalidated all state laws banning abortion, Leigh said.

Reagan should not have any influence over the court, Leigh said.

"Once a president has appointed a person there is no way he has control over the way that person votes," Leigh said.

"There is very little leverage a sitting president has over the court, like he might with a legislator," Leigh said.

Leigh said that the court is fiercely independent of the rest of the government and their attitude is that the only people they listen to are the lawyers who argue cases before them. "They are beyond the reach of the president," he said.



Associated Press

## State/Nation/World

## Agenda awaits last Burger court

WASHINGTON (AP)—The Supreme Court in its final weeks under Chief Justice Warren E. Burger could reshape affirmative action in the American workplace, impede federal budget balancing efforts and determine whether homosexual conduct is constitutionally protected.

In all, nearly a dozen of the more than 40 decisions the court will announce before adjourning in July are expected to have major impact.

President Reagan revealed Tuesday that Burger will resign at the end of the current court term, ending a 17-year tenure. Justice William H. Rehnquist is the president's choice to replace Burger as chief justice.

Perhaps the most closely watched remaining on the court's agenda will determine the fate of the Gramm—Rudman law designed to require a balanced federal budget by 1991.

The court's corridors were packed this week following a broadcast report that the justices were about to declare the act's core unconstitutional. No Gramm—Rudman decision was forthcoming, and each day since the court's public information office has received queries about when the decision will be handed down.

## Strike possible at Caterpillar

Peoria, Ill. (AP)—A union local for United Auto Workers at Caterpillar Inc., representing more than half the company's nationwide UAW workforce, has begun preparing for a strike in case contract talks fail in St. Louis, a union official says.

UAW Local 974's executive board, representing 9,100 members working at five Peoria-area plants and about 11,000 laid-off or retired area Caterpillar employees, approved preliminary walkout plans, said David Chapman, the local's vice president.

He said the board assigned members to line up kitchen workers who would pass out doughnuts and coffee in the event of a strike, and others to check on the supply of picket signs.

But Chappman called the planning routine and said it did not indicate the union thought that bargaining between the two sides was going badly.

"It's something you just have to do," he said. "We're getting out food lines prepared and our coffee lines ready."

"If we go on strike, we'll be ready."

## AMA president plans quality care, says he'll weed out incompetents

CHICAGO (AP)—The incoming president of the American Medical Association says he will work to weed out incompetent doctors and keep medical quality high in a cost-cutting era after his inauguration Wednesday.

Dr. John J. Coury Jr. is taking over the helm of the nation's largest organization of doctors as it copes with pressures to contain soaring medical costs and with a declining percentage of U.S. physicians on its membership rolls.

The 64-year-old surgeon, son of a truck driver and a sewing factory employee, has been a trustee of the 271,000-member group for 10 years, including serving as chairman of the board.

The beginning of his one-year term coincides with the AMA's annual meeting this week.

Coury has served on the AMA's ad hoc committee on medical ethics and says he favors a system under which doctors would be able to weed out the incompetent among their ranks in the same way lawyers can disbar their colleagues for misconduct.

He pledged in a recent interview that his theme

as he travels across the country during the coming year as the AMA's representative will be keeping the quality of medical care high despite pressures to lower costs.

"He's a straight arrow down the line," says Dr. Richard McMurray, a Michigan delegate who has known Coury for 25 years.

Another colleague of Coury in the AMA, where politicking for elective office can take on the flavor of a national political campaign, says one of Coury's strengths is he "has the ability to perceive the right way to go."

"He's not a real political person," says Dr. Thomas Berglund, a successor of Coury as president of the Michigan State Medical Society. "But he makes the right political moves by knowing what to do and knowing what is right."

Besides a dedication to medicine and to physicians, he can champion causes for the common man, McMurray says.

"He came from ordinary means, and his entire family has been successful and continues to be successful," McMurray says.

## South African workers hold strikes

JOHANNESBURG, South Africa (AP)—Hundreds of black supermarket employees staged work stoppages and sit-down strikes Wednesday to protest the detention of union leaders under the state of emergency, union and management sources said.

At least 40 union leaders were among the estimated 1,000 to 2,000 people of all races detained without charge immediately after the emergency decree was issued June 12.

Tony Bloom, chairman of the Premier Group food conglomerate and one of South Africa's leading businessmen, issued a statement denouncing the detentions and said corporations now must run their operations "by dealing with the mob, as their (workers') leaders are

custody."

The government reported three more blacks died in violence linked to anti-apartheid unrest, raising to 45 the number killed since the state of emergency was declared. Two were shot by police firing at rioters and one was burned to death by unknown assailants, the government said.

The average daily fatality rate has more than doubled under the state of emergency.

The government Wednesday acknowledged for the first time that police arrested nearly 200 people at a church near Cape Town last Sunday. By acknowledging the action, the government authorized journalists in South Africa to legally report the incident.



## Pitchers

\$1.75

All Summer  
Beer Garden  
Open

✓ Check out  
the classifieds!

Party All Weekend Long

Thursday

## Eastern Student Nite

—Screwdriver  
—Blue Tail Fly  
—Fuzzy Navel  
—Any flavor schnapps

65¢

—Miller Lite  
—Popcorn  
—Hot Dogs

25¢

Live D.J. "Eric" playing your  
favorite Rock-n-Roll music  
Miller Promotion Nite  
T-shirts • Hats • Giveaways  
50¢ Admission

at Ted's

Friday's Band

Live Entertainment

Saturday's Band

COUPON

On tour from — 16 oz. Bud  
St. Louis \$1.00 — screwdrivers  
— Calvert & Coke

Rock-n-Roll Show 75¢ 16 oz.  
"REKKER" Old Style

Songs by ZZ Top, Dokken,  
Ratt, Motley Crue, Van Halen,  
Scorpions, Robert Palmer,  
Bryan Adams

New Summer  
coupon policy

Get in 8-10 w/coupon for FREE

COUPON

COUPON

If you like "Ivory Grand"  
We feel 75¢ 16 oz.  
You'll like Old Style

## "BAD MANNERS"

Rock-n-Roll  
High Energy Stage Show

\$1.00

— 16 oz. Bud  
— Fuzzy Navel  
— Bacardi & Coke

New Summer  
Coupon Policy

Get in 8-10 w/coupon for FREE

COUPON

## The Summer Eastern News

The Daily Eastern News is published daily, Monday through Friday, in Charleston, Illinois during the fall and spring semesters and twice weekly during the summer term, except during school vacations or examinations, by the students of Eastern Illinois University. Subscription price: \$15 per semester, \$5 for summer only, \$28 for all year. The Daily Eastern News is a member of the Associated Press, which is entitled to exclusive use of all articles appearing in this paper. The editorials on Page 4 represent the majority view of the editorial board; all other opinion pieces are signed. Phone 581-2812. The Daily Eastern News editorial and business offices are located in the North Gym of the Buzzard Building, Eastern Illinois University. Second class postage paid at Charleston, IL 61920. USPS002250. Printed by Eastern Illinois University, Charleston, IL 61920.

## NEWS STAFF

Editor in chief . . . . . Bill Dennis	Photo editor . . . . . Dan Reible
News editor . . . . . John Stroud	Ass't. photo editor . . . . . Dan Mount
City Ent. editor . . . . . Chrystal Philpott	Advertising manager . . . . . Tim Corry
Act. campus editor . . . . . Amy Landers	Student business mgr. . . . . Wendy Crickman
Administration/Gov. editor . . . . . Michael Clark	Business manager . . . . . Glenn Robinson
Sports editor . . . . . Cindy Beake	Editorial adviser . . . . . Mike Cordts
Art Director . . . . . Dane Buczkowski	Publications adviser . . . . . David Reed

## NIGHT STAFF

Night editor . . . . . Bill Dennis	Photo editor . . . . . Dan Reible
Assistant editor . . . . . John Stroud	Wire editor . . . . . Harrell Kerkhoff
Sports editor . . . . . Cindy Beake	Copy Desk . . . . . Larry Smith

COUPON  
\$1.00 off Large Pizza  
WE NOW HAVE SPAGHETTI  
BY THE 1/2 GALLONS!  
Expires 8/15/86  
COUPON



fast

'n'

free

delivery

345-3400 • 1600 Lincoln





ROBB MONTGOMERY/Staff photographer

### Out for a walk

Coles County Association for the Retarded employee Tamyre Tutt, pursuing her master's degree in educational psychology, assists Ed Lloyd as part of his physical therapy.

## 91st Founder's Day honors war veterans

By A.L. LANDERS  
Campus/activities editor

A celebration honoring Eastern's Vietnam and Korean war veterans highlights the second annual Founder's Day celebration this weekend.

Chuck Titus, Founder's Day chairman, said the festivities commemorating Eastern's 91st birthday will begin Saturday at 8:30 a.m. with the dedication of commemorative plaques honoring alumni who served in the Vietnam and Korean conflicts.

The services will be held at the Old Main flagpole.

"Markers already exist for those alumni who fought in World War I and II, therefore, following a request to establish markers for the most recent military conflicts, it was determined to hold the ceremony in conjunction with Founder's Day," said Glenn Williams, vice president for student affairs.

Afterwards a reception will be held at 9 a.m. in Pemberton Hall "for everyone who came back for Founder's Day," Titus said.

At 10:30 a convocation will be held on the Old Main Quad Main, featuring keynote speaker Dr. John Keiser, president of Boise State University and 1958 graduate of Eastern.

In addition, Dr. Harold Cavins will discuss past presidencies, after which three University Service Awards and the Lord Service Award will be presented.

Titus said the Lord Service award is presented to "anyone who has worked with the university and has had outstanding achievement."

Following at noon will be a buffet luncheon in the Grand Ballroom. Titus said a jazz ensemble will provide background music for the meal.

Several class lectures will be given by EIU professors during the afternoon.

At 12 noon, Tim Gover will give, 'Banking: Evolution or Revolution' in the Arcola-Tuscola room, while in the Charleston-Mattoon room Jayne Ozier will discuss, 'Families: Traditions and Transitions'.

At 1 p.m. Catherine Smith's lecture, 'A Master Class for Piano Students' in the Union Walkway Lounge; Andrew Brulle's lecture, 'Special Education: Nobility or Tyranny' in the Martinsville room; Susan Wood's lecture, 'Love and Sexuality: Trends in Values and Behavior' in the Effingham room.

The celebration will be capped off at 2 p.m. with an ice cream social and the tunes of the Paris Community Band Concert on the Library Quad.

Titus said there will be no charge for the convocation, although a ticket is required.

He added that those wishing to partake of the buffet and ice cream social will be charged \$8.

Anyone wishing tickets can contact the Alumni office at 581-3313.

## Workshops, lectures planned for summer

By A.L. LANDERS  
Campus activities editor

Two Distinguished Visiting Faculty from the University of Nebraska will be presenting guest lectures and workshops the week of June 23 to open Eastern's Summer '86 term.

Fred Luthans, regents professor of management, will speak on "A new perspective for Managing Human Resources" at 7:30 p.m. Monday in Booth Library Lecture Hall.

Sang Lee, department of management chair and regents professor, will talk on, "The Productivity Challenge Facing American Business" at 7:30 p.m. Wednesday also in Booth Library Lecture Hall.

Charles Switzer, director of summer school, said, "we are extremely fortunate to have two people of this caliber this summer."

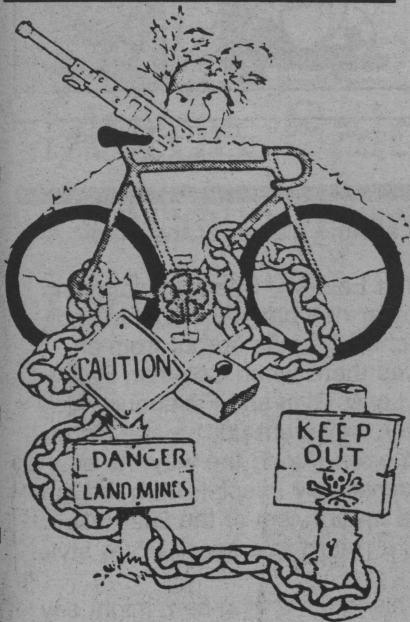
"Of a list of the top five management experts in the world, these two would make the list," Switzer said.

The two will team up to teach a workshop on "Management Evolution or Revolution: A Global Awakening to Managing People at Work" June 23-26.

Although nearly full, Switzer said students still have the opportunity to enroll in the workshop until 3:30 Monday.

The lectures, which are open to the public, are the first in a series of seven, designed to "bring people with broad perspectives to campus," Switzer said.

A bicycle worth riding is worth keeping! You can protect your bike from theft and discourage a thief with the proper precautions



**Harrison's  
Schwinn Cyclery**  
303 Lincoln Ave.  
(next to Hardee's)  
345-4223

INTRODUCING  
  
BRITTANY  
RIDGE

"Changing the Way America Goes to College"



**NOW RENTING**

**NEW 3 & 4 BEDROOM TOWN HOMES**

**Private Bedroom Occupancy from \$150<sup>00</sup> per mo.**

**New Appliances Including:**

Microwave  
Completely Carpeted  
Oven Ranges  
Curtains & Rods

Deck off Living Room  
Garbage Disposal  
Cable TV  
Washer & Dryer

Dishwasher  
2½ Baths  
Refrigerator  
Central Heat & Air

**348-1323**

Reserve yours for August today!

Lincoln Plaza — 655 W. Lincoln, Suite 4 — Charleston  
Monday-Saturday — 10:00-5:00 p.m.



Editorials represent the majority opinion of the editorial board

The Summer Eastern News  
Thursday, June 19, 1986

## Burger's out, Reagan wins?

Although the resignation of Chief Supreme Court Justice Warren Burger is not immediately devastating to liberal philosophy, it will have some long-term repercussions.

In fact, one of the main questions raised by Republicans and Democrats alike during President Reagan's two terms has been which of the two liberal justices remaining would retire first and who would replace them.

Burger's unexpected resignation and Reagan's nomination of Justice William H. Rehnquist as his successor won't make any difference from a conservative/liberal standpoint. Both Burger and Rehnquist were Nixon appointees. So, in effect, a conservative is replacing a conservative.

And with Judge Antonin Scalia, another conservative who now serves on the U.S. Court of Appeals, being named to replace Rehnquist, the Supreme Court balance remains basically unaltered.

But look a little deeper and there's a catch.

Rehnquist is relatively young for a Supreme Court Justice at 61, the same age Burger was when he replaced Chief Justice Earl Warren. Burger went on to serve as chief justice for 17 years, a timespan which saw the Supreme Court become more and more conservative.

Scalia is only 50, making him the youngest of the nine justices, four of which are over 70.

What this does is put the influence of Reagan philosophy on the Supreme Court for years to come with two justice appointments including Sandra Day O'Connor's appointment in 1981, as well as Rehnquist's appointment as chief justice, if approved by the Senate. And the liberals won't get any younger in the next two years.

Chief Justice Burger's resignation couldn't have come at a better time for Reagan. It is a hard blow to Democrats who have a chance to regain control of the Senate in November, and who would like to see some fresh liberal influence on the Supreme Court in the near future.

So what can we do? Nothing now. Our chance was two years ago when Reagan was re-elected. However, we can voice our opinions. But all we have to say now is, we told you so.

## Jokes abound when errors creep in

I know two things now.

'Leisure' is spelled with an 's', not a 'z'.

And there is really no way you can call the governor a 'whale' on the front page of a newspaper without some people considering it an insult.

Why am I telling you these things? Because all day Tuesday people were reminding me.

If it's true that complaints tend to flow from the top to the bottom, it's because complaints start at the top. When's the last time you heard someone say "Boy, this story burns me up! Tomorrow, I'm going right up to that newspaper office and complain to some underling about it!"?

No one likes mistakes in a newspaper less than the editors because we're the first ones to hear about it.

But, if you must complain, here's some advice. If you see a stupid spelling error like 'leisure' with a 'z', don't come up to the editor responsible and ask, "Hey, do you know you spelled 'leisure' with a 'z'?"

We know.

We know because everyone connected with the newspaper from circulation to ad staff to the publisher has already asked us "since when do we spell 'leisure' with a 'z'?"

And while they're at it—"and since when do we call the governor a 'whale' on the front page? Or on any page for that matter?"

(I meant it as a term of endearment.)

Anyway, we tend to take complaints from the public in stride because we have a sneaking suspicion that they couldn't do any better. We get that suspicion from some of the letters we receive.

Phrases like 'ivory-tower demagogues' are spelled 'ivory-tower demogods'. Can't they use a dictionary—I mean—dictionary?

You should see how they spell a simple word like 'libelous'.

Seriously, sometimes errors creep in. Some

## Personal file:

Bill Dennis

people would excuse them because we are all students over here.

But we tend to feel we should do a better job than many professional papers. We tend to hold ourselves to higher standards.

Few people know that not one faculty member sees our copy until it appears in our paper.

It has something to do with freedom of the press.

That's why our advisor tells people who call him with complaints to call the to the newspaper office. He has nothing to do about it.

It really can't be described how newsmen feel about errors. Perhaps it's best described by how we deal with each other when they happen.

The first time a reporter screws up, other reporters will say things like "oh well, that's the breaks" but they won't give the offender much sympathy.

A second time, they begin to wonder what the hell is wrong with you. Your next assignment is likely to be a dog show. It might be a good idea to consider a career change.

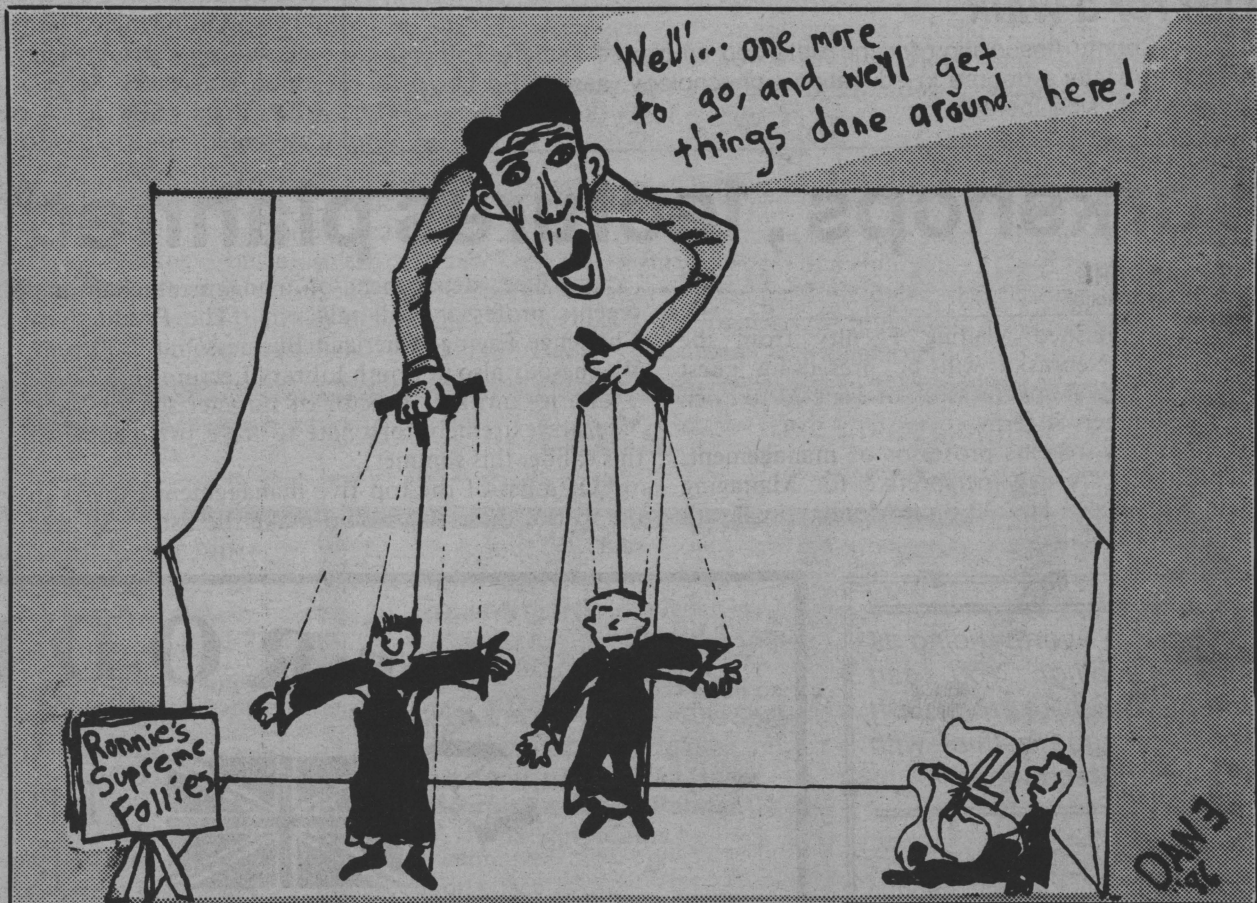
The third time, you are very likely to have that decision made for you.

For the little mistakes, like spelling 'leisure' with a 'z', they keep you in line with good natured kidding.

"Hey, Bill! Have any le-zzzzzure time recently? Maybe we could go up to Springfield and do some 'whale' watching!"

Very funny.

—Bill Dennis is the editor in chief of Summer Eastern News.



## Your turn

### Those who keep Eastern going overlooked says retiree's son

Editor:

Among the many retirements this year at Eastern was one which has gone largely unnoticed by the public outside the physical plant. At the end of April, Charles Sampson, who headed Eastern's electricians for the past 10 years and worked with them for 10 years before that, has hung up his tools for the last time.

Like many of the physical plant employees, he was largely overlooked by students, faculty and administrators. The people who keep the grass mowed, the walls painted, the plumbing flowing and the power on are taken for granted until something goes wrong—then they are very noticeable. Without such men and women, though, it would be rather difficult to keep a university in operation. As surely as the faculty, administrators and students, they are an important part of the educational process, even if their work does not

draw the attention nor the glamor of the other three.

During his years at Eastern, Charles Sampson saw Stevenson Tower rise between Lincoln and Douglas halls, watched Carman sprout from an empty field, and was there when Coleman Hall, Booth Library and Lantz Gym and Fieldhouse expanded. And after they went up, he and his co-workers kept them open. Along the way, he saw a campus change dramatically in spirit, from the quiet of the early '60s to the activism of the late '60s and early '70s and a return to a near-1950s style apathy.

Some, including his letter-writing son, might say the old place won't quite be the same without him. One thing is certain, just as those whose pictures hang in Old Main and names adorn buildings, Charles Sampson and scores like him have done more than their share to make Eastern a special place.

Bob Sampson  
Decatur, Ill.



# Off-campus apartments could shrink in size

By **CRYSTAL PHILPOTT**  
City/entertainment editor

Students got the ol' double wammy Tuesday night when the Charleston City Council moved on two city ordinances which will have a direct effect on many students.

The council voted unanimously to amend a restriction in the city code book which restricts single-person dwelling units to a minimum of 500 square feet.

Although the ordinance was originally only scheduled to be placed on file for public inspection, the council voted to waive the layover period and pass the ordinance.

The city voted to adopt the Building Officials Code

Administration International Incorporated (BOCA) which allows single-person dwelling units to be as small as 120 square feet, plus a bath.

Although building owners may now decrease the size of the units, off-street parking spaces must still be provided for each unit.

The 120 square foot units, which would be firmly restricted to one occupant, would be good news to those students who want to live alone, but can't afford to pay rent on a large apartment.

For students frustrated by the already cramped quarters of many apartments, the amendment may not be such a welcome idea.

Public Works Commissioner Wayne Lanman said, "I've got some ill feelings about this."

Finance Commissioner John Winnett, however, liked the amendment. "If it's good enough for the government, it's good enough for us," he said.

A parking ordinance affecting students was placed on file for public inspection by the council as well.

The ordinance, proposed by Eastern police, would ban parking on Seventh Street on the east side of the street from Grant Avenue south to Hayes Avenue and on the north side of Hayes Avenue from Seventh Street to Ninth Street between 2 a.m. and 6 a.m.

The ban was made due to a problem police were having with people parking their cars along the street and leaving them there for days at a time, making the parking unavailable for use by anyone else.

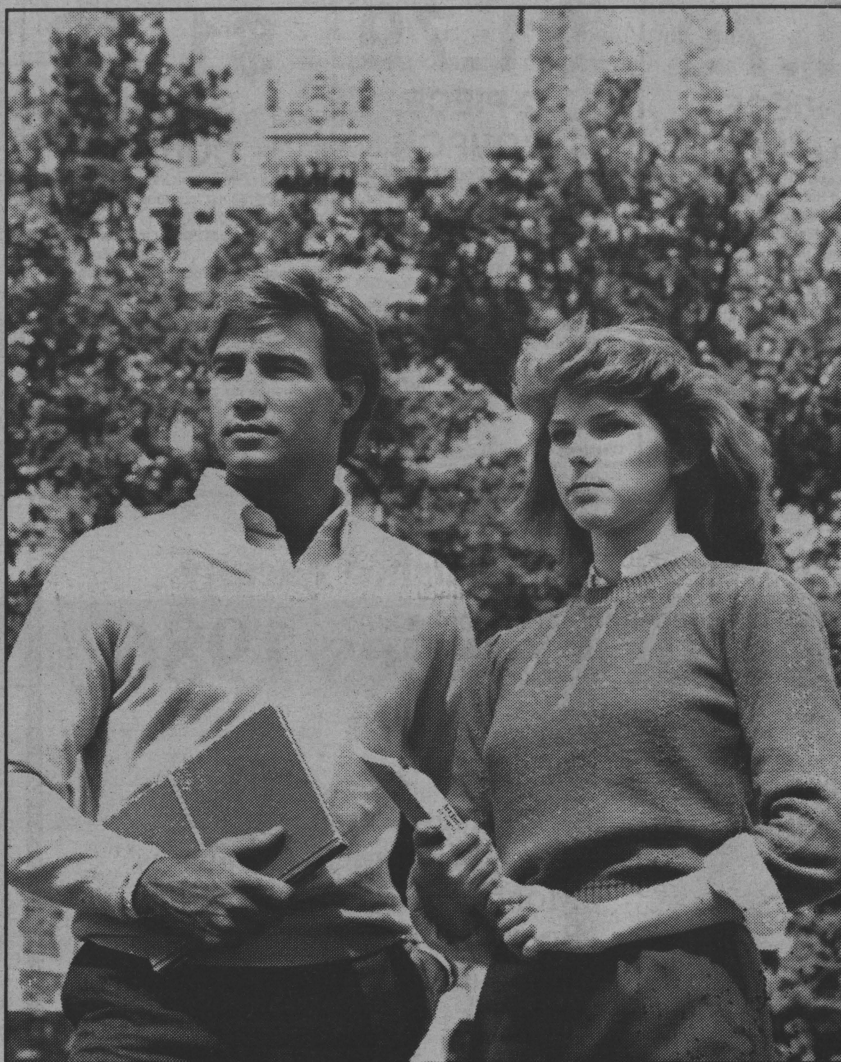
## Boatmen's Student Loans

A good education is not only important, it can be expensive.

That's why Boatmen's Student Loan Program makes good sense.

Learn now, pay later with a Boatmen's Student Loan. Contact Myron Salmon at our Lincoln Avenue Facility today!

418 Sixth Street  
Sixth and Lincoln Ave.  
Highway 16 in Ashmore  
345-2101



Please send more information on  
Boatmen's Student Loan Programs.

NAME \_\_\_\_\_

ADDRESS \_\_\_\_\_

CITY/STATE/ZIP \_\_\_\_\_

TELEPHONE NUMBER \_\_\_\_\_

Please mail to Boatmen's National Bank of Charleston. If you need more information or have any questions, please call Myron Salmon our Student Loan specialist.



**BOATMEN'S  
NATIONAL BANK  
OF CHARLESTON**

Member FDIC  
Equal Opportunity Lender

Loans are subject to Federal and State Guidelines which may change.



**Sam's**

Fresh Pizza Frozen

The Frozen Pizza with the Pizza Parlor Taste

	9"	12"
1 Item	\$2.50	\$4.25
2 Items	\$2.75	\$4.50
Special	\$3.50	\$5.25

Hours  
Mon. - Sat. 11 - 7

345 - 3433

930 18th Street  
Charleston, IL.**DYNASTY INN  
SPECIALS**

THURS: Gin &amp; Tonic 80¢

FRI: Happy Hour 4:30 to 6:30

50¢ off mixers 25¢ off beer Free Appetizers

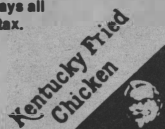
Imports  
\$1.00— Grolsch  
— Molson

— St. Pauli Girl

**\$1.79****2-PIECE  
COUPON**

2 pieces of chicken (Original Recipe or Extra Crispy) • 1 individual serving of mashed potatoes and gray • fresh-baked Buttermilk Biscuit for only \$1.79 with this coupon. Limit one package per coupon, four coupons per customer. Good on combination white/dark orders only. Customer pays all applicable sales tax. Expires 6/26/86

This coupon good only at KFC store in Charleston.

**\$1.79****2-PIECE  
COUPON**

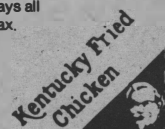
2 pieces of chicken (Original Recipe or Extra Crispy) • 1 individual serving of mashed potatoes and gray • fresh-baked Buttermilk Biscuit for only \$1.79 with this coupon. Limit one package per coupon, four coupons per customer. Good on combination white/dark orders only. Customer pays all applicable sales tax. Expires 6/26/86

This coupon good only at KFC store in Charleston.

**\$1.79****2-PIECE  
COUPON**

2 pieces of chicken (Original Recipe or Extra Crispy) • 1 individual serving of mashed potatoes and gray • fresh-baked Buttermilk Biscuit for only \$1.79 with this coupon. Limit one package per coupon, four coupons per customer. Good on combination white/dark orders only. Customer pays all applicable sales tax. Expires 6/26/86

This coupon good only at KFC store in Charleston.



## Eastern's Distinguished Faculty Lecture Series 1986



**"A New Perspective for  
Managing Human Resources"**  
Monday, June 23 - 7:30 p.m.  
Booth Library Lecture Room

Dr. Fred Luthans is Regents Professor of Management at the University of Nebraska and current president of the Academy of Management.

**"The Productivity Challenge  
Facing American Business"**

Wednesday, June 25 - 7:30 p.m.  
Booth Library Lecture Room

Dr. Sang Lee is the Chairperson of the Department of Management and Regents Professor of Management of the University of Nebraska. He is also immediate past president of The American Institute for Decision Sciences.



Sponsored by E.I.U. Summer School and University Board Summer Programs, advised through the Student Activities Office, a Division of Student Affairs, Eastern Illinois University.



**Price Busters!**  
Check The  
Summer Eastern News



**YooHoo!! don't miss the FUN**  
...REGISTER NOW...  
**SUMMER CRAFT WORKSHOPS**  
Come in at the CRAFT DEPOT  
OR  
Call: 581-3618  
CRAFT Workshops Begin: June 30  
EASTERN ILLINOIS UNIVERSITY UNION

**SUMMER  
HOURS**

Mon.-Fri. 12-5  
Sat. 10-4  
345-6070

Welcome to EIU Summer Session &amp; Our Traditional

**"FIRST WEEK" SALE****TAKE 10% OFF EVERYTHING YOU BUY\*!**

Tuesday, June 17 through Thursday, June 19

**THE LINCOLN BOOK SHOP**

Sixth & Buchanan  
'One Block North of Old Main'

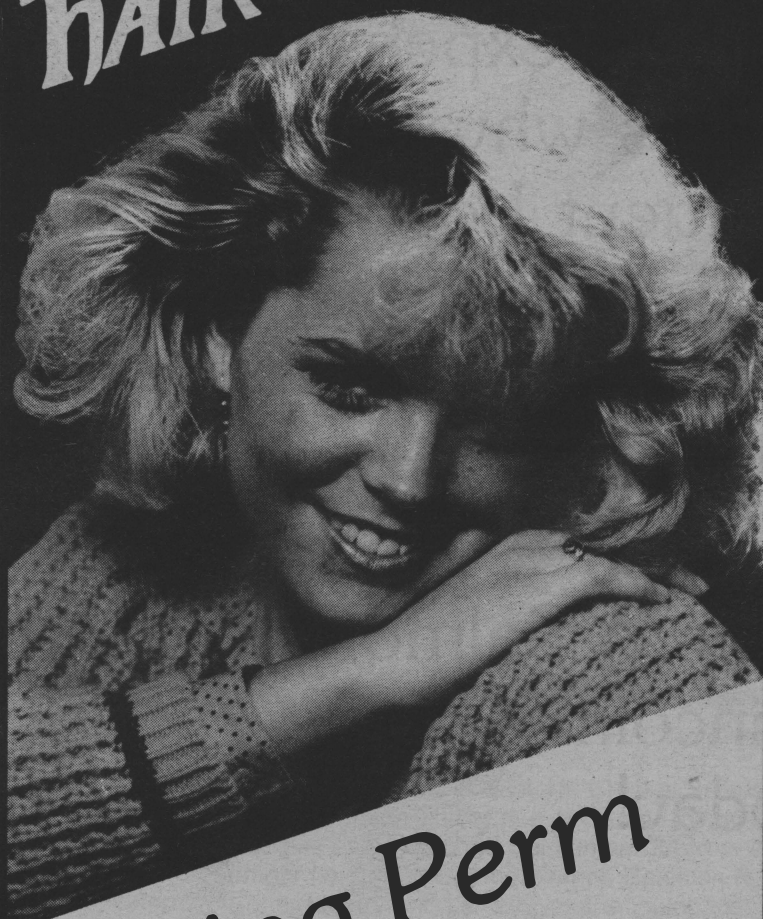
AND (a word to the wise)

**YOU BETTER BELIEVE 10% ADDS UP** on Work-  
books! Dictionaries! "Supplementaries" Music!  
Not to mention cards & candy! Floppy Disks!

Posters! Best Sellers!

\* exclude any double discounts &amp; individual orders

# HAIR BENDERS



## Spring Perm Special \$10 off

with this ad

Call now for an appointment

Perms reg. \$40.00 now \$30.00  
Includes Cut & Style

610 W. Lincoln, Suite B • West Park Plaza 345-6363  
EXPIRES 8-15-86



# Eastern's Summer CONFERENCE GUIDE

A weekly supplement of The Summer Eastern News and the Housing Office

## Junior physicists create new science camp

by Chrystal Philpott

A larger than expected crowd of junior scientists will pour onto campus June 22 through 28 for the first annual science camp.

Registration officials began turning campers away after 54 students signed up for the conference, which had originally been planned to accommodate 50 high school students.

"They had an excellent turnout. They were shocked that they had to cut off registration. They are really excited and pleased. There's only enough facilities for 50," John Gardner, physics instructor and camp director, said.

Gardner said only a maximum of 50 students had been anticipated due to the nature of the camp. He said most students wouldn't enjoy a science camp.

Despite what many students might think, Gardner said, the camp was actually going to be a really enjoyable experience for those who attend.

"They're going to be doing some pretty exciting things. They'll go to the airport to see a hot air balloon and they'll have a wind tunnel they'll demonstrate for the parents the last day," Gardner

said.

During their stay, campers will learn about and practice the "Scientific Method," he said.

Campers will use the theory of one dimensional kinematics to predict the height they can attain with a model rocket. They will then fire the rocket and measure its height to verify their prediction.

Students will also study winged flight, which deals with airplanes, and ballooning. The study of ballooning will help students to understand why balloons have lift. As a further demonstration of the theory, the campers will witness an actual balloon flight on campus.

Gardner said students were not required to have any special knowledge of physics to attend the camp, though they were required to have completed and done well in algebra.

"We're going to build the knowledge (of physics)," he said.

Gardner said the camp would actually be a mini-physics course, although teaching would be done from lectures and from experiments and demon-

strations, rather than from the traditional textbooks.

"That's what makes this camp special," he said, "the experiment. When they take high school physics they often don't get to do a lot of experimenting. This gives them the chance to do that."

The students will have an hour or so every afternoon for recreation, though there will be little other free time. Evenings will be spent watching science films or experiments. "There'll be little a lot of variety in the camp, but it will be structured variety," Gardner said.

On Thursday students will partake in one structured activity when they tour the Coles County Airport, which is west of Charleston.

A cookout will be held on Friday giving the students a chance to play such games as softball and a waterballoon toss.

"The basic idea behind the camp," Gardner said, "is connecting using theories to predict the behavior of an object and then experimenting to see if it works. It's all a check to see if they've learned the "Scientific Method."



AMY LANDERS / Staff photographer

### Oh say can you see...

Girl's state participants bring down the American flag in their retreat ceremony, which is held every night at 7 p.m.

The girls arrived on Saturday, June 15. The camp is held annually at Eastern.

## Universal cheerleader's phase I kicks into action

by Chrystal Philpott

Twirling, flipping and marching in the sun, 100 rifle and flag corps girls will gather July 22 through 25 to participate in the Smith-Walbridge band camp.

The high school age girls are coming to Eastern from all parts of the United States, though most of them come from Illinois and Indiana, said Maggie Smith from Smith-Walbridge's head office.

Though this is only Eastern's second year to host the camp, the camp originated in 1949, when it was the first camp of its kind.

When Smith-Walbridge first began holding camps, it did so for majorettes only. Now, Smith said, the camps are held for not only majorettes, but cheerleaders, pom pon girls, drum majors, bands, rifle corps and flag corps as well.

Directing the auxillary unit camp this year will be Ruth Ann Medworth from Brazil, Indiana. Brazil is an

instructor at Indiana State University and sponsor of the cheer team, song girls and Sycamore guard.

"Ruth Ann Medworth is a very outstanding director. All of our teachers are very qualified. They are all qualified adult instructors from various parts of the country.

The campers will be in class from 8:30 a.m. to 12:00 noon and from 1:30 p.m. to 4:00 p.m. Night classes will also be taught.

The campers will be divided into three levels: beginner, intermediate and advance.

During classes the girls will learn and practice various moves and routines. Evaluations will be made each day of what each girl has learned and how well she is performing.

At the end of the week a final evaluation will be made of each girl's learned and how well she is performing.

At the end of the week a final evaluation will be made of each girl

and of each school. A rating of superior, excellent or good will be awarded.

"There is a final show if they (the public) want to come and see it. It's unofficially open to the public. It's mainly for parents and band instructors and for us to conduct final evaluations," Smith said.

Special awards will also be made at the end of the week for most improved school, most outstanding individual and most outstanding school.

Smith said she felt the camp was special not only because of the experience it had to offer, but because it could offer a quality education.

"Sure there's strict discipline, but the education is good. The quality of instruction that is given to the student is high. They get a quality education.

"There's a lot of comradery, too. The campers get the chance to meet a lot of new people from other schools, too.

## Flag camp offers good experience

by Chrystal Philpott

Campus will be filled with the sound of cheering and shouting as phase I of the Universal Cheerleaders Association Camp kicks into action June 24 through 27.

The camp, usually done in one session, has been divided up into two this summer because of the growing number of high students which attend the camp each year. Phase I alone already has 200 girls registered.

Camp director Julie Surico will arrive on campus a day early to prepare for the girls arriving the 24.

The campers will spend their time learning new moves and new routines each day, said camp coordinator Martha Burge. The girls will be coached both privately and in their squads, which will be divided up according to age. The three age levels will consist of junior high, junior varsity and varsity squads.

Tumbling classes will also be held during the 8:00 a.m. to 9:00 p.m. days. A particularly popular session, Burge said, is usually the pom pon class.

Each day the campers will be evaluated on their progress. On the last day a competition will be held between girls who have done particularly well.

"Fun Night" will be held on June 26. Burge said in the past the evening has been reserved for such activities as a dance off, a jump off and other cheerleading contests.



# Meal hours

Thursday, June 19

Breakfast

Home Ec ..... 7:30 a.m.  
Basketball IM. .... 7:30 a.m.  
Basketball IIM ..... 7:30 a.m.

Lunch

Basketball IM. .... 11:45 a.m.  
Basketball IIM ..... 11:45 a.m.  
Home Ec ..... 12:00 p.m.

Dinner

Home Ec. .... 5 p.m.  
Basketball IM. .... 5 p.m.  
Basketball IIM ..... 5 p.m.

Friday, June 20

Breakfast

Home Ec ..... 7:30 a.m.  
Basketball IM. .... 7:30 a.m.  
Basketball IIM ..... 7:30 a.m.

Lunch

Basketball IM. .... 11:45 a.m.  
Basketball IIM ..... 11:45 a.m.

Dinner

Basketball IIM ..... 5 p.m.

Saturday, June 21

Breakfast

Basketball IIM ..... 7:30 a.m.  
C.A.P. .... 7:30 p.m.

Lunch

Basketball IIM ..... 11:45 a.m.  
C.A.P. .... 11:30 p.m.

Sunday, June 22

Breakfast

C.A.P. .... 7 p.m.

Lunch

C.A.P. .... 11:30 a.m.

Dinner

C.A.P. .... 5 p.m.  
Smith-Walbridge ..... 5:30 p.m.  
SLCP ..... 5 p.m.  
Science ..... 5 p.m.  
Volleyball ..... 5 p.m.  
Speech ..... 5 p.m.  
Basketball IF ..... 5 p.m.

Monday, June 23

Breakfast

C.A.P. .... 7 a.m.  
Smith-Walbridge ..... 7:30 a.m.  
Journalism I ..... 8 a.m.  
SLCP ..... 8 a.m.

Science ..... 7:30 a.m.

Lunch

C.A.P. .... 11:30 a.m.  
Smith-Walbridge ..... 12 p.m.  
Journalism I ..... 11:30 a.m.  
SLCP ..... 12 a.m.  
Science ..... 7:30 a.m.

Dinner

C.A.P. .... 5 p.m.  
Smith-Walbridge ..... 5:30 a.m.  
Journalism I ..... 5 a.m.  
SLCP ..... 5 a.m.  
Science ..... 5 a.m.

Tuesday, June 24

Breakfast

C.A.P. .... 7 a.m.  
Smith-Walbridge ..... 7:30 a.m.  
Journalism I ..... 8 a.m.  
SLCP ..... 8 a.m.  
Science ..... 7:30 a.m.

Lunch

C.A.P. .... 11:30 a.m.  
Smith-Walbridge ..... 12 p.m.  
Journalism I ..... 11:30 a.m.  
SLCP ..... 12 a.m.  
Science ..... 7:30 a.m.

Dinner

C.A.P. .... 5 p.m.  
Smith-Walbridge ..... 5:30 a.m.  
Journalism I ..... 5:15 a.m.  
SLCP ..... 5 a.m.  
Science ..... 5 a.m.

Wednesday, June 25

Breakfast

C.A.P. .... 7 a.m.  
Smith-Walbridge ..... 7:30 a.m.  
Journalism I ..... 8 a.m.  
SLCP ..... 8 a.m.  
Science ..... 7:30 a.m.

Lunch

C.A.P. .... 11:30 a.m.  
Journalism I ..... 11:30 a.m.  
SLCP ..... 12 a.m.  
Science ..... 7:30 a.m.

Dinner

C.A.P. .... 5 p.m.  
Journalism I ..... 5:15 a.m.  
SLCP ..... 5 a.m.  
Science ..... 5 a.m.

# Residence hall rules, guidelines

Please be aware of the following policies and regulations of the residence halls.

- 1) Alcohol is not allowed in conference housing.
- 2) Windows are to be kept closed because of the air-conditioning.
- 3) Do not throw things or yell out windows.
- 4) Members of the opposite sex are off limits in your room and on your floor. Entertain guests in the main lounge.
- 5) Keep doors locked at all times. (The University is not responsible for stolen articles).
- 6) No playing on or mistreating elevators, otherwise they will be turned off.
- 7) Courteous conduct is expected from all campers.
- 8) Curfew hours (11:30 p.m.) required for all "Youth Camps."

Guests will be requested to leave the hall if they:

- 1) Violate one or any of the above policies.
- 2) Disturb others.
- 3) Damage university property.
- 4) Become a risk to self and to others.

Parents guardians will be notified in such cases.

## Vital residence hall information

**Mail:** To be certain that your mail reaches you, please have your mail sent in care of the hall you are staying in and indicate your group's name. Mail will be given to your camp director.

**Desk Operations:** Taylor, Lawson, Andrews and Stevenson desks will be open from 8 a.m. until midnight. The desk will provide change and answer any questions you might have. In addition, pizzas and popcorn will be sold there.

**Phones:** There are pay telephones located in the lobbies of Taylor, Lawson, Andrews and Stevenson Halls. All of these telephones are located by the residence hall desk.

**Local Calls:** House phones located in the lobby will connect you to the "Charleston Area" phones.

**Long Distance:** Any long distance calls made from room phones (where applicable) will be billed directly.

**Emergency Numbers:** Off campus (Dial "4" first)

Fire-Ambulance ..... 4-345-2131

Hospital ..... 4-345-2525

Police ..... 4-345-2144

On Campus (only four digits)

Health Service ..... 3013

University Police ..... 3212

**Keys:** Keys that you have will operate your room door. Please do not lose these keys as there is a \$5.00 charge for lost keys. (For security purposes, we have to change the entire core when a key is lost.) Please lock your door whenever you leave your room.

**Outside Doors:** All outside doors will be locked at midnight.

**Meals:** Meal schedules will be posted at the main desk and/or with your camp counselor. Also look for the *Eastern News Conference Guide*.

**Vending Machines:** Vending machines are

located in the basement area of all the residence halls. Pepsi and candy are available in these machines.

**Screens:** Do *not* remove window screens.

**Check-Out Time:** Everyone is expected to check out of their residence hall room by noon of the last day of their stay. There are no exceptions.

**Check-Out:** Please follow the following procedures when you leave the residence hall:

- 1) Open your drapes.
- 2) Close your windows.
- 3) Turn off the lights.
- 4) Lock the door.
- 5) Return linen to the main lobby in the residence hall in which you are staying. Lawson Hall residents return the linen to the Lawson Hall main lobby, Taylor Hall residents to Taylor Hall, etc.
- 6) Return keys to the residence hall desk in the building in which you are staying. Your room will be thoroughly checked after you leave and any damage to the room or contents will be billed to you or your school at the full replacement/removal cost.



# Welcome parents, students-to-be...

Future Eastern students and their parents visit Eastern's campus almost every day of the summer to take part in the New Student Orientation program.

Mary Smith, assistant director of housing, said nearly 1,500 future students and their parents will tour the campus as part of E.I.U. Debut 1986.

During this program, both students and parents are introduced to all different aspects of Eastern's campus, and students can pre-register for classes, Smith said.

The program begins as soon as parents and students arrive at the Charleston campus in the afternoon.

First off, students majoring in business, industrial technology, pre-

engineering, chemistry, physics or mathematics may report to Phipps Lecture Hall (Science Building) by 3:30 p.m. for the required placement examination. The placement exam will be offered during the morning of the second day for those who could not arrive in the afternoon.

After dinner, a panel program will be offered, Smith said. In this program, titled "A Student View of E.I.U.," Eastern students will answer questions that the future students and parents have about life on campus and in Charleston.

At 7:45, an optional campus tour will be offered and access to free bowling lanes and billiards tables will

be offered.

The next day, pre-registration activities will take place for students. At that time, an advisor appointment is scheduled. Participation for students in this is mandatory and it is recommended for parents.

Smith said the program begins at 8 p.m. in Pickles (the basement of the University Union addition).

From there students will meet with advisers, register for classes and take tests that will aid in course placement.

At registration, photos will be taken for student I.D. cards. In addition, speech and hearing tests will be required during the afternoon.

After lunch, future students and

their parents can tour the campus, or search for off-campus housing in Charleston, Smith said.

For those who want to see what living in one of Eastern's residence halls is like, a tour of a residence hall will be offered at 1:30 p.m., she added.

There is a greeting area in the University Union addition lobby for those who want to relax while their others tour the campus and town.

The Orientation program has been popular, Smith said. "People leave with a fairly positive impression of Eastern."

"We want to show them that Eastern is a caring school and that we care about the students here," she said.

## ...tips to make your stay pleasant

**Check-In** All guests may check in and obtain their room key and linen at the main desk located in the lobby of the residence hall which you are assigned. Generally, most rooms will be ready after 1 p.m. on the specified day of arrival.

**Check-Out Noon** Due to the great demand for residence hall accommodations during the summer months we ask that you please plan to check out of your rooms by noon. We rotate our rooms throughout the summer and the noon check-out time allows our cleaning staff enough time to clean the rooms before our next

guests arrive. If you have a conflict with scheduling, please consult the Hall Counselor at the main desk.

**Meal Tickets** If you have pre-ordered meal tickets through the mail or via telephone, they should be in the envelope with your key. If you have not purchased tickets and now would like to do so, they are available at the main desk.

If you want to purchase breakfast tickets, it will be necessary for you to purchase them on your arrival night, because the main desk will not open until 8:30 a.m. Breakfast is scheduled before 8 a.m. because the first pre-

enrollment meeting begins at 8 a.m.

Also, lunch tickets need to be purchased before noon of the pre-enrollment day because the desk closes between noon and 1 p.m.

**Meal Ticket Refunds** If you have ordered tickets and are unable to use them, please leave them at the desk and your money will be refunded at a later date via Eastern Illinois University check. It is not possible to refund cash. Please make sure your correct name/address is attached to the tickets which you want refunded.

**Room Refunds** If for some

reason, you do not use as any room reservations as you previously requested, please inform the Hall Counselor. Again, it is not possible to refund cash.

**Linens/Keys** When checking out of the residence hall (noon), please bring your dirty linen and key to the check-out area and have an Eastern Summer Staff member check your linen and key in so that additional charges will not have to be assessed.

**Questions?** Please feel free to consult one of our Summer Staff persons.

### Linens and things

- 1) Each room will be furnished with one pillow per bed unless notified differently by the Linen Coordinator.
- 2) Each room will be furnished with one bed pad per bed.
- 3) Each person, upon checking into the residence hall will be required to fill out the "Linen Check-Out Return" card.
- 4) Each person will be required to complete "Return Side of Linen Card" when returning dirty linens to desk at completion of camp.
- 5) Each person will be assessed for missing linens at the cost of:

Sheets .....	\$4.50 each
Pillowcase .....	1.25 each
Bath Towels .....	2.00 each
Hand Towels .....	1.75 each
Blankets .....	12.00 each
Pillows .....	5.00 each

Blankets are available from the desk (limited amount per hall) for persons requiring one.

There are a few clocks available for parents during orientation.

## Want to know more about Eastern? Admission information is available

Dale Wolf, director of admissions, said potential Eastern students can receive admission information and applications for entry into Eastern by contacting the Office of Admissions.

When receiving an application, it is best to wait until the early fall of a student's senior year in high school to apply, according to Wolf.

There is no fee for applying and applications are processed immediately after they are received from the student.

Guaranteed admission into Eastern does not mean that on-campus housing is guaranteed, he said.

He advised students to apply for housing well before applying for admission.

To be eligible for entry into Eastern, some academic requirements must be met.

To be admitted to the university, candidates must:

- Fall Semester—**
1. rank in the upper half of their high school class based on six or more semesters,
  2. or achieve an ACT composite score of 19 (SAT of

820).

**Spring Semester or Summer Terms—**

1. rank in the upper two-thirds of their high school based on six or more semesters,
2. or achieve an ACT composite score of 17 (SAT 760).

Wolf noted that beginning freshman, however, who could not meet regular admission requirements have the chance of entering Eastern through the Prescriptive Curriculum Admissions Program.

The PCAP is not remedial or conditional—it includes only regularly offered University courses—and the number of students accepted into the program is limited by available resources.

For more information on applying at Eastern, the requirements or availability of PCAP contact the office of Admissions by calling toll free: 1-800-252-5711. Or send the coupon shown below to:

Office of Admissions  
Eastern Illinois University  
Charleston, Illinois 61920

### Services on campus

**Lantz Building Hours:** 6 p.m.-8 p.m. Monday-Friday

**University Union Bookstore Hours:** 8 a.m.-5 p.m. Monday-Thursday

**University Union Bowling Alley Hours:** 2 p.m.-9:30 p.m. Monday-Thursday

**Hardees in the University Union:** 7:30 a.m.-6 p.m. Monday-Thursday; 9:30 a.m.-2 p.m. Friday

**Union Station Sweet Shop:** 9 a.m.-4 p.m. Monday-Friday

**Union Candy Shop:** 8 a.m.-5 p.m. Monday-Thursday

### YES, I AM INTERESTED IN EASTERN ILLINOIS UNIVERSITY

Name \_\_\_\_\_

Address \_\_\_\_\_

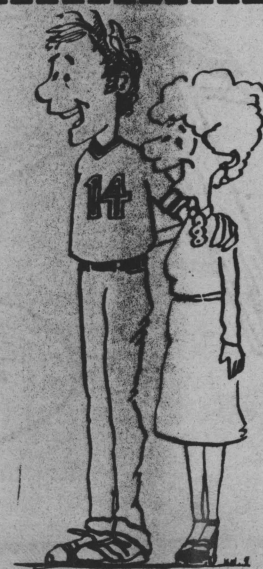
City \_\_\_\_\_ State \_\_\_\_\_ Zip \_\_\_\_\_

High School \_\_\_\_\_ Year of graduation \_\_\_\_\_

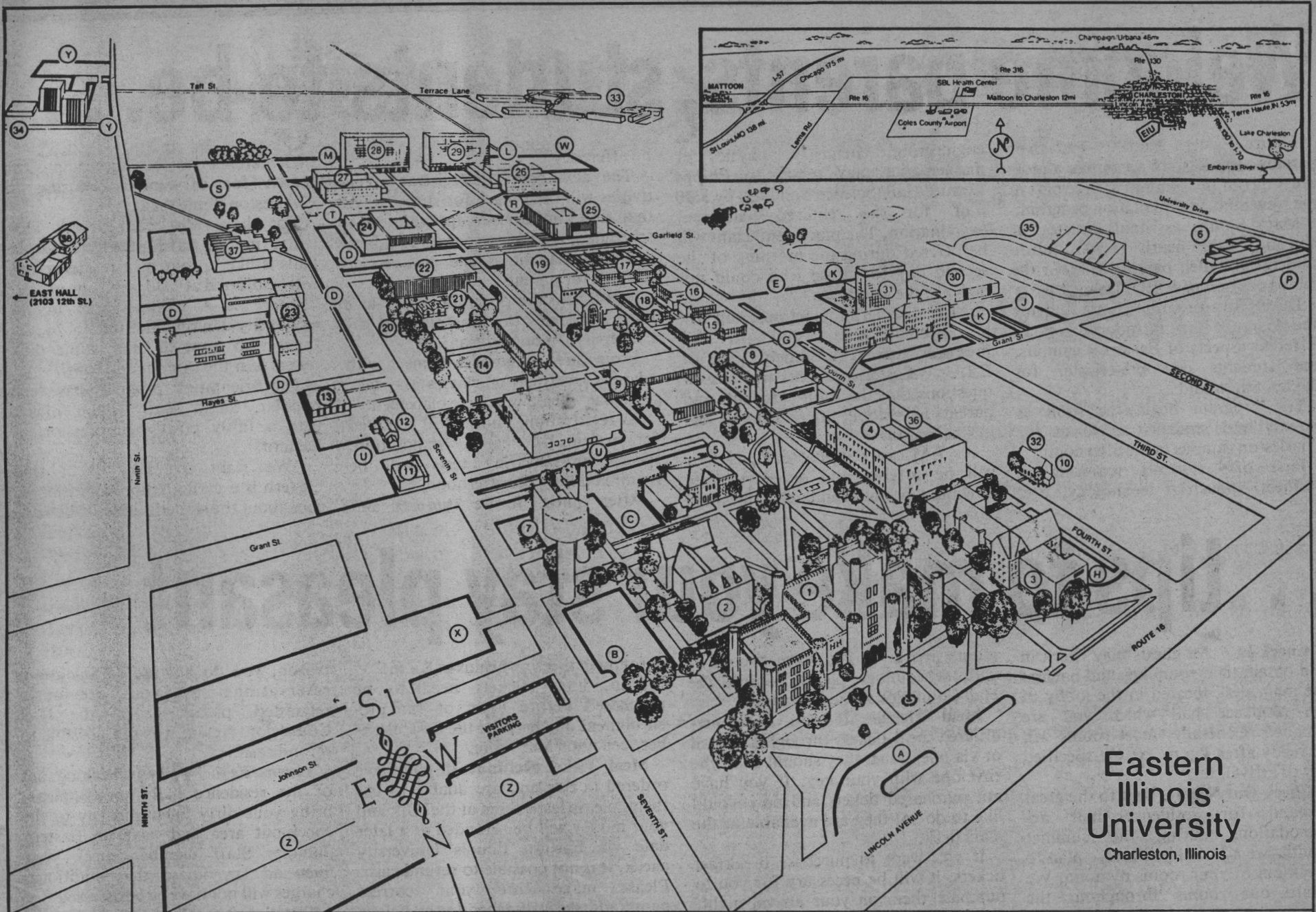
Please send me:

- ☐ An application for admission  
☐ Housing information  
☐ Financial aid packet

Other \_\_\_\_\_







**Eastern  
Illinois  
University**  
Charleston, Illinois

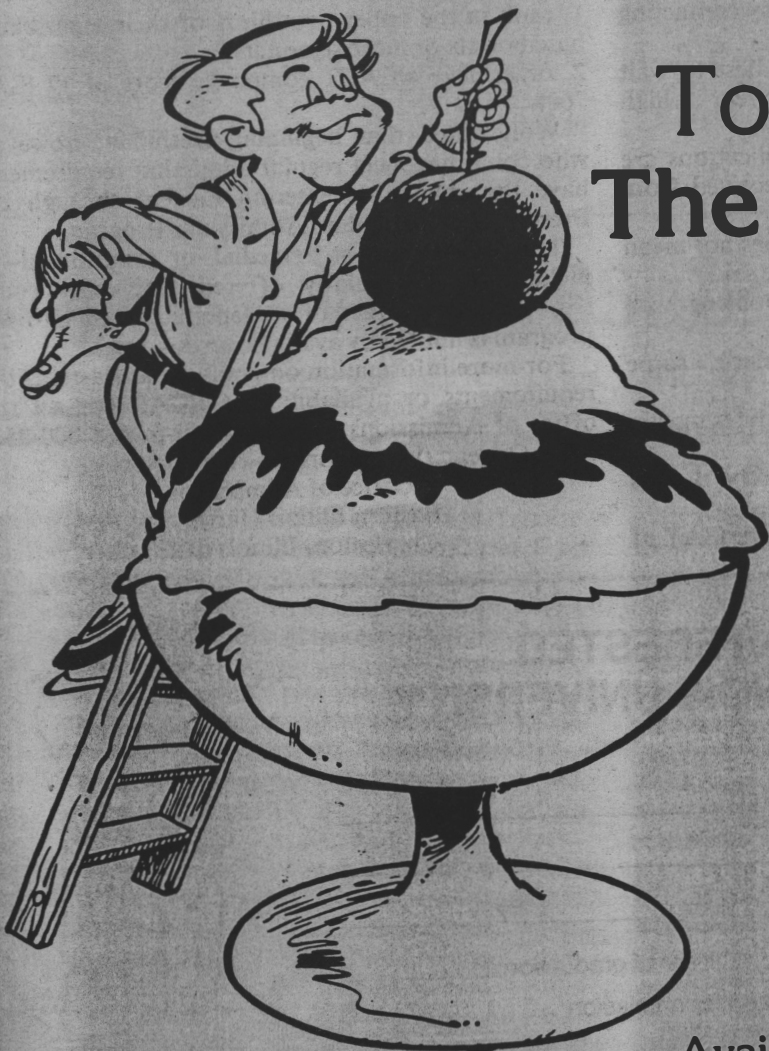
1. Old Main -- Admissions (Livingston C. Lord Administration Building)
2. Blair Hall
3. Pemberton Hall
4. Science Building
5. Student Services Building
6. Physical Plant Services Building
7. Power Plant
8. McAfee Gymnasium
9. University Union

10. Booth House (Personnel Offices)
11. Telephone and Security Building
12. Buzzard House
13. Clinical Services Building
14. Doudna Fine Arts Center
15. Ford Hall
16. McKinney Hall
17. Weller Hall
18. Gregg Triad
19. Booth Library

20. Life Science Vivarium
21. Greenhouse
22. Life Science Building
23. Buzzard Education Building
24. Applied Arts - Education Center
25. Coleman Hall
26. Taylor Hall
27. Thomas Hall
28. Andrews Hall
29. Lawson Hall

30. Lantz Health, Physical Education and Recreation Building
31. Lincoln-Douglas-Stevenson Halls
32. Non-Academic Personnel
33. University Apartments
34. Carman Hall
35. Stadium-Track (O'Brien Field)
36. Phipps Lecture Hall
37. Tarble Arts Center (completed 1982)
38. East Hall (2103 12th St.)

Parking areas indicated by heavy outline and letter. Printed by the authority of the State of Illinois 6-1-81. E2774. 3000 copies



## Top-off your summer with The Summer Eastern News

and keep up-to-date  
with news and events  
at your home  
away from home

Available Tuesday's and Thursday's throughout campus!



# Entertainment

7



CHRYSTAL PHILPOTT / Staff photographer

The Little Theatre in Sullivan on the Square is the area's only professional theatre. After *Guys and*

*Dolls*, the Theatre will be playing *The Rainmaker* June 25 through July 6.

## Guys and Dolls treats crowd

By CHRYSTAL PHILPOTT  
City/entertainment editor

From the moment the curtain rises, *Guys and Dolls* at the Little Theatre in Sullivan is a toe-tapping delight.

The curtain rises on a dark stage sprinkled with white bulbs like those on the front of a theatre. The display is dazzling and casts only enough light to reveal the silhouette of a single man. The effect is breathtaking.

The show that follows is equally worthwhile. The main cast is a mixture of crapshooting ruffians and low-income lady dancers. The crapshooters, though they bark fiercely, turn out to be quite lovable fellows, and their songs flow with the spice of barbershop harmony.

*Guys and Dolls* can be seen through Sunday at 8 p.m. with a 2 p.m. showing on Saturday. However, the Sunday show has been sold out.

Sullivan is located northwest of Mattoon on Illinois Rt. 121. The Little Theatre is on the square.

The leading couple, composed of Sky Masterson, played by Kevin Paul Hofeditz, and Sarah Brown, played by Dixie Spence, is an ironic relationship between an ever-so-sweet-and-innocent mission doll and a worldly gambler.

Hofeditz makes a good-looking gambler and his smooth, deep voice charms not only the leading lady, but the audience as well. The audience's heart goes out to him when his cocky disposition turns to vulnerability when Sky finally falls in love with Sarah.

*Luck Be a Lady* in Act II keeps toes tapping long after the show ends, as well as displaying Hofeditz at his finest. The song's upbeat melody is perfect for Hofeditz's vocal range. The song was definitely one of the top numbers of the evening.

The comic relief team of Wayne Salomon and Beth Baur help add the necessary comic zing to the production.

Salomon doubles as the show's artistic director and as Nathan Detroit, a local gambler who spends half his time running a floating crap game for big-league gamblers and dodging the attempts of his fiancée to set the wedding date.

Nathan's girlfriend, Miss Adelaide, portrayed by Baur, is a persistent creature with her one-track mind set on marrying her beloved Nathan. Her accent is by far the best of the bunch.

Baur is a true asset to the show as she tosses her pretty blond head and spits out some of the cutest lines of the show.

The relationship between Adelaide and Nathan is played well by Baur and Salomon and results in some hysterically funny scenes.

Nathan and Adelaide have been engaged for 14 years and somehow have managed to convince Adelaide's mother, who lives far away, that they have been married the whole time.

Whit Reichert also deserves a special round of applause for his stunning performance as Nicely-Nicely Johnson. Nicely, who has some of the funniest lines in the show, keeps the audience rolling in the aisles with his off-the-wall quips. His performance in *Sit Down, You're Rockin the Boat* in Act II is right next to *Luck Be a Lady* as the most memorable and best song of the evening. Reichert is a veritable one-man comedy show.

Although John Grassilli as Big Jule is a quiet character, his stage presence is magnanimous.

Joneal Joplin as Harry the Horse does an excellent job as a towering, rough-edged gambler.

J. Scott Matthews as Benny Southstreet, Charles Leader as Rusty Charlie, Steven Berglund as Arvide Abernathy, Scott Taylor as Angie the Ox, and Troy Mayfield as Society Max present equally marvelous performances. Not only are they realistic in costume, period, and character as gamblers, but they greatly enhance the atmosphere of the production.

Not only are the gamblers realistic in costume, character and period, but they help create the overall atmosphere of the production. The gamblers are a fun-loving bunch who make the audience smile in spite of themselves.

The Hot Box Girls are a cute part of the show but need more polish. It is distracting that two of the girls wear tan dancing shoes and the rest do not. Despite the incongruity, however, *A Bushel and a Peck* and *Take Back Your Mink* are enjoyable.

The Havana Dancers in Act I do a marvelous job dancing, though their skin is much too white for them to be believable Cubans.

Although costuming is generally well done, especially on the gamblers, several of the lady performers' wigs appear quite phony and cheap-looking.

David Fehr does a fabulous job of making a rather small orchestra sound as good, if not better, and as full as a full-sized orchestra. The audience does not feel cheated at all.

Attractive sets slide on and off stage at a lightning pace in between scenes while the audience watches.

The choreography, done by Resident Choreographer Millie Garvey is beautifully simplistic. It fits and works so well that it is a show in itself.

Director Mark Landis has done an expert job of pulling the show together into the smooth-flowing end product.

## Local thesians line up summer of performances

By CHRYSTAL PHILPOTT  
City/entertainment editor

Charleston Community Theatre is greeting summer 1986 with two musical productions ahead of it.

CCT has chosen to present *Broadway Then and Now: A Musical Revue* and *Annie Get Your Gun* for its upcoming season.

The first show of the season, *Broadway Then and Now: A Musical Revue*, will run July 24 through 27 at 8 p.m. in the Tarble Arts Center. Tony Cox will direct the production with Sam Orr as assistant director.

CCT member Doug Stanberry said the show offers a glimpse of Broadway from the early 1900s 'til now.

Jayne A. Ball, who will be performing in the show, said, "Musicals go well in this town. This one has good variety and good songs. It's going to be exciting."

Ten performers will be in the show, consisting of about 20 numbers, Ball said. The performers are Ball, Patrick Clayberg, Jenna Kyle, Stan McMorris, J. Sain, Tom Schnarre, Hubert Trimble, Jackie Wade, Charlene Warner and Roberta Young.

The second CCT production of the season, *Annie Get Your Gun*, will run September 25-28 at the Lake Land Community College Theatre. Auditions for the show will be at 7 p.m. July 29 and 30 at the Lake Land Theatre.

Stanberry will be directing the show with Ball as assistant director, Sue Schnarre as musical director, and Betty Balasi as choreographer.

Stanberry said the storyline is an interesting one. "The story takes place around 1900. It's about Annie Oakley, who's a sharpshooter, and Frank Butler, who Annie falls in love with. She gets into show business with a wild west show.

"There's an intense rivalry between Annie and Frank as to who's the best sharpshooter. The song *Anything You Can Do I Can Do Better* results," Stanberry said.

Ball said the rivalry makes her angry. "He (Frank Butler) can't stand a woman who's better than him. She (Annie Oakley) falls in love with him and what does she do? She throws the shooting contest. It makes me so mad."

Ball said what makes the show so worth seeing or performing in is its musical numbers. "The music is great. It's up and it will carry the show."

The show contains such tunes as *Doin What Comes Naturally*, *You Can't Get a Man With a Gun*, *There's No Business Like Show Business*, *Old Fashioned Wedding* and *The Girl I Marry*.

Stanberry said CCT chose *Annie Get Your Gun* because "it hasn't been done in the area for a while and there are parts for all ages.

"We thought it would be very popular. It's such a real upbeat type show, and it's going to be a big show," Stanberry added.

## Doudna creates an Enchanted Evening

A show full of big musical numbers is planned for Eastern this summer when the theatre department presents its summer show, *Some Enchanted Evening*.

The show, which run July 11 through 16 in the Doudna Fine Arts Center, will be a musical revue of work by Rogers and Hammerstein.

The show will feature songs from such shows as *South Pacific*, *Oklahoma*, *the Flower Drum Song*, *the Sound of Music*, *the King and I* and *West Side Story*.



# Digest

## TV

**4:35 p.m.**  
5—Baseball: Los Angeles at Atlanta.

**5:00 p.m.**  
2,17—People's Court  
3—Newscape  
9—One Day At A Time  
10—Price Is Right  
15—Jeopardy!  
17—People's Court  
38—Entertainment Tonight

**5:30 p.m.**  
2,3,10,15,17,38—News  
9—Welcome Back, Kotter  
12—Nightly Business Report

**6:00 p.m.**  
2,3,10,15,17—News  
9—Private Benjamin  
12—MacNeil, Lehrer Newshour  
38—Ropers

**6:30 p.m.**  
2,15—Wheel of Fortune  
3—PM Magazine  
9—Baseball: Chicago at New York  
10,17—Newlywed Game  
38—Too Close For Comfort

**7:00 p.m.**  
2,15—Cosby Show  
3,10—Crazy Like A Fox  
12—Illinois Press  
17,38—Ripley's Believe It Or Not!

**7:20 p.m.**  
5—Movie: "Captain Horatio Hornblower." (1951) The exploits of C.S. Forester's naval hero, ably played by Gregory Peck.

**7:30 p.m.**  
2,15—Family Ties  
12—Innovation

**8:00 p.m.**  
2,15—Cheers

3,10—Trapper John, M.D.  
12—Jacques Cousteau  
17,38—Colbys

**8:30 p.m.**  
2,15—Night Court  
**8:50 p.m.**  
12—Prairie Pathways  
**9:00 p.m.**  
2,15—Hill Street Blues  
3,10—Knots Landing  
12—Mystery!  
17,38—20/20

**9:30 p.m.**  
9—News  
**9:50 p.m.**  
5—Movie: "Charge of the Lancers." (1953) Romantic action nonsense about the Crimean War, with a Gypsy helping an officer take the Russian base.

**10:00 p.m.**  
2,3,10,15,17—News  
9—INN News  
12—Doctor Who  
38—Three's Company

**10:30 p.m.**  
2,15—Tonight  
3—M.A.S.H.  
9—Trapper John, M.D.  
10—Night Heat  
12—Movie: "Carefree." (1938) The wonderful team of Fred Astaire and Ginger Rogers brightens this slight tale about psychoanalysis and hypnotism, as applied to romance.  
17—WKRP in Cincinnati  
38—Nightline

**11:00 p.m.**  
3—Hart to Hart  
17—Nightline  
38—Movie: "Macao." (1952) An ex-GI and a nightclub

singer get mixed up with diamond smugglers in the Orient.

**11:25 p.m.**  
5—Movie: "Blood Alley." (1955) John Wayne and Lauren Bacall in a tale about people escaping from the Chinese Communists.

**11:30 p.m.**  
2,15—Late Night With David Letterman  
9—Movie: "Victory at Entebbe." (1976) TV-movie dramatizing the July 1976 Israeli rescue raid on Uganda's Entebbe Airport.  
17—One Day At A Time

**11:40 p.m.**  
10—Movie: Robert F. Lyons is "A Dangerous Friend" in this lurid 1971 thriller about a murderous teenager in a Southwestern town.

**Midnight**  
3—Richard Roberts  
17—News

**12:30 a.m.**  
2,3—News  
38—Jimmy Swaggart

**Friday**  
**4:30 p.m.**  
2—Jeopardy!  
9—Jem  
12—Sesame Street  
15—Jeffersons  
17—Entertainment Tonight  
38—Divorce Court

**4:35 p.m.**  
5—Rocky Road

**5:00 p.m.**  
2,17—People's Court  
3—Newscape  
5—Baseball: Atlanta at Cincinnati.

9—One Day At A Time  
15—Jeopardy!  
38—Entertainment Tonight

**5:30 p.m.**  
2,3,10,15,17,38—News  
9—Welcome Back, Kotter  
12—Nightly Business Report

**6:00 p.m.**  
2,3,10,15,17—News  
9—Private Benjamin  
12—MacNeil, Lehrer Newshour  
38—Ropers

**6:30 p.m.**  
2,15—Wheel of Fortune  
3—PM Magazine  
9—Baseball: Chicago at New York.  
10,17—Newlywed Game  
38—Baseball: St. Louis at Philadelphia.

**7:00 p.m.**  
2,15—Knight Rider  
3,10—Twilight Zone  
12—Washington Week in Review  
17—Webster

**7:30 p.m.**  
12—Wall Street Week  
17—Mr. Belevedere

**8:00 p.m.**  
2,15—Miami Vice  
3,10—Movie: Allies tackle Nazis in "Victory." (1981) Their weapon is a soccer ball, and John Huston's POW drama has as much in common with the World Cup as with WWII.  
12—Great Performances  
17—Mr. Sunshine

**8:30 p.m.**  
17—Pilot

**9:00 p.m.**  
2,15—Stingray  
12—Treasure Houses of Britain  
17—Love Boat

**9:30 p.m.**  
9—News  
38—Footsteps of Giants

**10:00 p.m.**  
2,3,10,15,17—News  
9—INN News  
12—Doctor Who

**10:30 p.m.**  
2,15—Tonight  
3—M.A.S.H.  
9—Trapper John, M.D.  
10—Movie: Carson McCuller's "The Heart Is a Lonely Hunter" (1968) depicts the fragile friendship between a handicapped man and a wistful teen-ager.  
12—Movie: "The Three Godfathers." (1936) Three bandits find a baby in the Arizona desert—and risk their lives to save it.  
17—WKRP in Cincinnati  
38—Three's Company

**11:00 p.m.**  
3—Movie: "Dallas Cowboys Cheerleaders II." (1980) TV-movie sequel focusing on the private lives of that football team's cheering squad.  
17—Nightline  
38—Movie: "Paths of Glory." (1957) A powerful and moving indictment of war, co-written and directed by Stanley Kubrick.

**11:30 p.m.**  
2,15—Friday Night Videos  
5—Night Tracks  
9—Movie: "Elmer Gantry." (1960) Oscars went to Richard Brooks, Burt Lancaster and Shirley Jones for this version of Sinclair Lewis's novel about sex and evangelism in the Midwest.  
17—One Day at A Time

**Midnight**  
17—News  
**12:30 a.m.**  
38—Jimmy Swaggart

Report errors immediately at 581-2812. A correct ad will appear in the next edition. Unless notified, we cannot be responsible for an incorrect ad after its first insertion. Deadline 2 p.m. previous day.

## Services Offered

"My Secretary," word processing service. Professional resume packages, letter of application, transparencies, quality term papers, thesis, etc. Summer office hours are 9 a.m. to 12 p.m. Call 345-1150.

**8/7**  
Typing Service Available. Reports, term papers, resumes, etc. Fast, dependable, inexpensive. Call for info 346-2205 or 346-3213 ask for Jessica.

**7/10**

## For Rent

Don't settle for the ordinary! Have sunken-in living room, ceiling fans, and skylights, etc. 9-month lease, \$130/person, prefer girls, call Gayle 345-2784.

**6/26**  
Two bedroom furnished apartment. New furniture—very nice. Close to campus. Water, garbage, and Cable TV included in rent. \$140 ea. for three. 9½ lease. Phone 345-4508.

## Help Wanted

**GOVERNMENT JOBS.** \$16,040-\$59,230/yr. Now Hiring. Call 1-800-687-6000 Ext. R-9997 for current federal list.

**6/17,19,24,26**

**Roommates**  
WANTED MALE roommate \$150.00 whole summer plus utils. 1601 S. 9th St. Apt. 4. OWN BEDROOM. SHARP. MUST SEE.

**6/24**  
Advertise your unwanted items in The Daily Eastern News classified ads.

**h-00.**

**6/19**  
Room for women 1415 Seventh. 6th house from campus. 345-3845 \$100 monthly—utilities included.

**6/19**  
Apartment for female, fall and spring—or spring only! Your OWN bedroom. Call 345-7502 for details.

**6/19**  
Affordable. Better than nice. Many extras. Comfortable furnished and quiet. Mom would approve. Call Cathy 348-0191 or Jan 345-9318.

**6/19**  
SUMMER SPECIAL. Cheap rent—good location, have your own bedroom. Call 345-2265 for info.

**00**  
FURNISHED APARTMENTS FOR MEN. SUMMER LOW AS \$60. CALL 345-4846.

**00**

## Official Notices

Official Notices are paid for through the Office of University Relations. Questions concerning notices should be directed to that office.

### FINAL EXAMINATION SCHEDULE Eight-Week Summer Term 1986

	Monday August 11	Tuesday August 12	Wednesday August 13
0730-0930	M-1200	M-1030	M-0900
1000-1200	M-1330	M-0800	M-0730
1300-1500	Makeup or Arranged	Makeup or Arranged	Makeup or Arranged
1900-2100	M-1900	T-1900	—

- Final examinations are scheduled on the basis of the first class hour meeting of the week irrespective of whether the first hour is classroom or laboratory activity.
- Final examinations for multiple-hour classes are scheduled on the basis of the first hour of the multiple-hour block.
- A M- or T- prefix indicates whether the first class day of the week is Monday or Tuesday. For instance, M-0800 indicates the scheduled time for the final examination in a course having its first class-hour meeting of the week at 0800 on Monday, T-1030 is for a class having its first class-hour meeting of the week at 1030 on Tuesday, etc.
- Final examination periods indicated in the above schedule as "Makeup or Arranged" are to be used only in cases where:
  - The first class hour meeting of the week does not conform to the schedule patterns established herein.
  - The meeting of the class appears in the Summer Term Class Schedule as "ARR."
  - The student presents an approved examination change request.
- Final examinations for one semester hour courses may be given at the discretion of the instructor and, if given, should be scheduled for the last regular class meeting of the term.
- Final examinations for courses numbered 4750 or above may be given at the discretion of the instructor and, if given, are to conform to the schedule patterns established herein.
- Final examinations for intercession and five-week session courses should be scheduled for the regular class meeting time on the examination day stipulated in the Summer Term 1985 calendar.
- Final examinations are to be given in all courses unless specifically exempted under the provisions of #5 and/or #6 above or by departmental recommendation to, and approved by, the Council on Academic Affairs.
- Students may not deviate from the published final examination schedule written approval of the Dean, Student Academic Services.
- Instructors may not deviate from the published final examination schedule without written approval of the department chairperson and Dean of the School or College according to guidelines established by the Vice President for Academic Affairs.

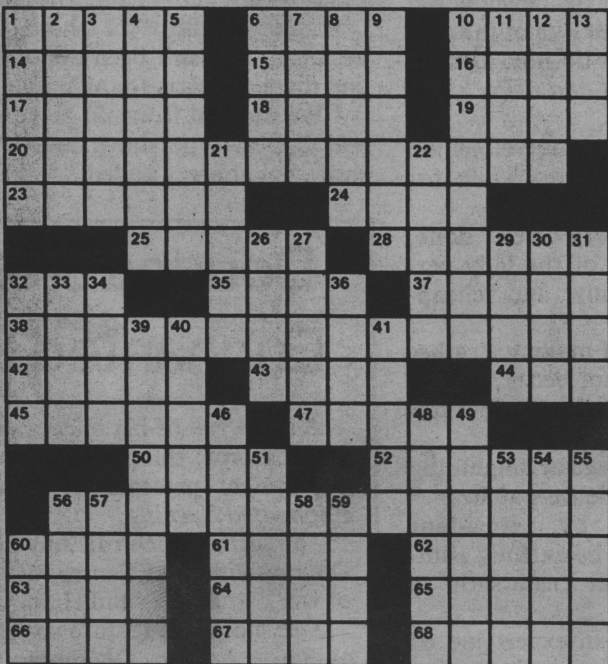
Samuel J. Taber, Dean  
Student Academic Services

### ACROSS

- Rebuffs
- At the peak
- Labyrinth
- Spartan slave
- Guitar accessory
- Famed compiler of almanacs: 1708-64
- Knoll: Sp.
- Tare's partner
- Riga native
- Helen Hayes-Vincent Price vehicle
- Store fodder
- Uns'igned, for short
- Silent butler's contents
- Hauled
- Muscle-energy source: Abbr.
- Border upon
- La. region
- Matthew Josephson book
- Russian coin
- Recipe direction
- Cry of scorn
- Scents
- Noted English potter
- Girasol
- Seed coats
- Burgess translation of a Sophocles play
- Jupiter
- Malayan craft
- Mythical Norse giant
- Indigo
- Outside: Comb. form
- Emulate a ham
- Acceleration units

### DOWN

- Athenian ars
- Actor in "The Citadel": 1938
- What push may come to
- Admit
- Templeton and Waugh
- Shakespearean heroine
- Ottomans
- Play opening
- Fictional plantation
- "Martha" is one
- Strong
- Shirk
- Breslin's "World
- Without End, —
- Sixth Greek letter
- Wintertime in N.Y.C.
- Part of R & R
- Dutch cheese
- Wanes
- Avine treats
- Rounded mass
- Borough NNE of Pittsburgh
- Dot's partner
- Type of mackerel
- "B.C." character
- Melon or squash
- What Fogg took
- Makes over



See page 9 for answers



# Thursday's Classified ads

June 19, 1986

Report errors immediately at 581-2812. A correct ad will appear in the next edition. Unless notified, we cannot be responsible for an incorrect ad after its first insertion. Deadline 2 p.m. previous day.

9

## For Rent

House. 4-5 bedroom. Furnished. 348-1614.

7/8

1 and 3 bedroom furnished apartments with oven, refrigerator, dishwasher, cent. a/c. Available fall at Park Place Apts. (Across from Union on 7th St.) Call 217-359-0203.

00

Mobile Home, furnished, 2 bedroom, air conditioned. Phone 345-6052.

6/26

## For Sale

For Sale: 1982 Ford Escort, 27,000 miles, \$4,000 or best, 348-8716.

6/19

SOLOFLEX WEIGHT MACHINE. \$375. Save a bundle off a new one. (\$855). Call 345-2600 (after 5) to test it out.

6/19

GOVERNMENT HOMES from \$1 (U repair). Also delinquent tax property. Call 805-687-6000 Ext. GH-9997 for information.

9/15

Is It True You Can Buy Jeeps for \$44 through the U.S. government? Get the facts today! Call 1-312-742-1142. Ext. 8847.

7/8

12 x 55 Mobile Home, skirted, stove, refrig. MUST SELL. \$2450. 345-9608.

6/24



## For Sale

Mobile Home 10' x 50' Rockette (with tipout), 2 bedrooms (a study with desk, bookshelves), partially-remodeled interior, carpeting. \$1500. Call evenings 348-1564.

7/1



## Announcements

The Charleston SHUDO-KAN KARATE CLUB presents: Summer Self-defense Program. For more information call: Harold at 581-2232 or Pat at 581-2305.

6/19

Don't miss the fun at the Craft Depot! Register now for SUMMER CRAFT WORKSHOPS. Come in or call! 581-3618.

c-6/19, 24

THE CHARLESTON SHUDO-KAN KARATE CLUB presents: TRADITIONAL SHUDO-KAN KARATE. For more information call: HAROLD AT 581-2232 or PAT AT 581-2002.

6/19

Bust a button? We'll fix rips, tears, hem skirts-jeans-slacks, replace zippers. Check out the Craft Depot's Mending Services. 581-3618.

c-6/19, 7/10

Do you have a special talent you want known? Advertise it in the classifieds!

h-00



## Announcements

New Credit Card! No one refused Visa/Mastercard. Call 1-619-565-1522 ext. C 1190 24 hrs.

7/1



## Announcements

ROMANS: Every Wed. \$3.00 all you can drink, Top of Roc's, 9-12, 25¢ beers 12-1.

7/1



## Announcements

KEEP ABORTION LEGAL AND SAFE. NARAL. Free referral 345-9285.

8/7



## Announcements

ROMANS: Every Wed. \$3.00 all you can drink, Top of Roc's, 9-12, 25¢ beers 12-1.

7/1

## BLOOM COUNTY



# Official Notices

Official Notices are paid for through the Office of University Relations. Questions concerning notices should be directed to that office.

## Application for Graduation

Application and reapplication for graduation for Summer Term 1986 must be accomplished no later than the deadline of 4:30 p.m. on Monday, June 23, 1986. The necessary forms are available in Records Office.

James E. Martin, Registrar

## Summer Refund Deadlines

The last day to cancel Summer classes and receive a full refund was Friday, June 13, 3 p.m.

The last day for a partial refund is Monday, June 23, 3 p.m. A partial refund includes all tuition and fees paid except insurance.

the last day to WITHDRAW FROM THE UNIVERSITY and receive a 50% refund is Monday, June 30 3 p.m. Fifty percent of all fees and tuition paid—except insurance—will be refunded.

These deadlines apply to both the 8-week term and the 5-week term.

Michael D. Taylor, Director, Registration

## Summer 1986 Commencement

Summer 1986 Commencement will be held Sunday, August 10, at 4 p.m. in the Union/Library Quadrangle (in case of rain, Lantz Gymnasium). Rehearsal for Commencement will be held Thursday, August 7, at 7 p.m. in Lantz Gymnasium. Notification, as well as cap and gown order forms will go out to eligible participants at their permanent addresses early in July. Faculty wishing to rent need to contact this office (OM111) by July 21. Cap and gowns will be handed out in North McAfee all day on Thursday, August 7, and Friday, August 8; and from noon to 2 p.m. on Sunday, August 10.

Daniel E. Thornburgh, Commencement Coordinator

## Drop Verification

To verify that a drop request you submitted during the first five class days has been processed, return to the Registration Office no sooner than five working days after the date you submit the drop.

Michael D. Taylor, Director, Registration

## Grade Change Appeals

Appeals to change assigned grades must be initiated by the students through the appropriate instructors within four weeks after the start of the grading period following the one for which the contested grades are recorded. The deadline for Spring Semester 1986 grade change appeals is Monday, July 14, 1986.

James E. Martin, Registrar

## Health Competency Examination

The Health Education Competency Examination will be given on Tuesday, 22 July 1986. Register in person at Testing Services, 208 Student Services Building; bring your EIU ID and \$2.00 for the fee. The registration deadline for this examination is Tuesday, 15 July.

NOTE: You may take the Health Competency Examination ONLY ONCE.

H.C. Bartling, Director Testing Services

## Writing Competency Examination

Undergraduates: To satisfy graduation requirements for the Bachelor's degree at Eastern Illinois University, you must pass the Writing Competency Examination. Register to take this examination after you have completed sixty semester hours (junior standing) and have credit for both English 1001 and 1002. Register in person from 8:00 to 11:30 and 1 to 4 at Testing Services, 208 Student Services Building; bring your EIU ID and

\$5.00 for the fee. The only examination this summer session will be given on 15 July. The registration deadline is 1 July and that also is the last day that you may cancel your registration and have your fee refunded.

Passing the Writing Competency Examination is a graduation requirement as stated on page 40 of the 1981-82 catalog, page 43 of the 1983-84 catalog, and page 45 of the 1985-86 catalog.

H.C. Bartling, Director Testing Services

## Summer Adds

Students already registered for Summer classes may submit add requests on Thursday, June 19—TODAY—between 9:30 a.m. and 11:30 a.m. in the Registration Operations Room, south basement McAfee.

THURSDAY, JUNE 19—TODAY—IS THE DEADLINE FOR ADDING AN 8-WEEK OR A 5-WEEK SUMMER CLASS.

Michael D. Taylor, Director, Registration

## Student Insurance Refund

Students who can provide evidence of having health insurance equal to or better than the EIU Student Sickness and Accident Insurance, may request a "Petition for Insurance Refund" form from Student Health Insurance, Student Services-East Wing. A copy of the company's outline of coverage must be attached to the completed refund form. June 30, 1986 is the last date these petitions will be accepted for Summer Semester, 1986, Joyce Cinq-Mars, Insurance Specialist.

John Flynn, Director Financial Aid

## Fall Pre-Enrollment

A currently enrolled on-campus student may pre-enroll for Fall 1986, beginning Wednesday, June 25 and

ending Wednesday, July 9 at 4 p.m.

Pick up materials and instruction in the Registration Operations Room, south basement McAfee until 3 p.m., Wednesday, July 9.

Put completed pre-enrollment forms in the box outside the Registration Operations Room no later than 4 p.m., WEDNESDAY, JULY 9. Any undergraduate student must have the department stamp (from his major department) on his form.

To increase chances of getting a complete schedule, each student is encouraged to indicate a USABLE specific alternate course for each specific primary course requested.

Michael D. Taylor, Director, Registration

## Student Information Changes

When changes occur, errors are detected, or information is missing in the following basic student information items, please report them to the offices indicated.

HOUSING-local and/or home address and telephone number;

STUDENT ACADEMIC SERVICES-residency status, degree major, advisor; RECORDS OFFICE-social security number, name, classification, marital status, or any other changes or additions not covered above.

Samuel J. Taber, Dean Student Academic Services

## Full-time Student Academically

In order to be considered a full-time student academically a student must carry at least 12 semester hours each semester at least 6 semester hours during a summer term. For any number of semester hours less than 12 during a semester and 6 during a summer term a student is considered a part-time student academically. This is the rule by which Records Office certifies students as full-time to such

agencies as Social Security, Good Student Discount, etc. If you have questions concerning any of this, please contact Records Office.

James E. Martin, Registrar

## Constitution Examination

The Constitution Examination will be given on Thursday, 24 July 1986. Register in person at Testing Services, 208 Student Services Building, bring your EIU ID and, if you are retaking the exam, \$2.00 for the fee. The registration deadline for this exam is Friday, 18 July.

If you fail the examination, you may repeat it as many times as necessary to pass; however, the examination will be given only on scheduled dates.

H.C. Bartling, Director, Testing Services

## Rules Affecting Scholarships

According to the Illinois State Scholarship Commission rules, students receiving the following scholarships must maintain Satisfactory Progress Requirements, as defined by the university, in order to receive financial aid:

Illinois National Guard and Naval Militia  
Illinois Policemen/Firemen  
Dependent's Program  
Correctional Officer's  
Survivor Grant Program

Questions regarding Satisfactory Progress Requirements may be directed to the Office of Financial Aid, Student Services Building, 2nd Floor, East Wing, Carol Majewski, Scholarship Section.

John Flynn, Director Financial Aid

## Union Bookstore Schedule

The Bookstore will be closed for inventory June 25, 26 and 27, 1986.

Wanda C. Reid, Bookstore Manager

## Summer Dependent Insurance

Full-time students (8 hours or more) with dependents are reminded that if they desire Sickness and Accident Insurance for dependents for Summer Session 1986, they may obtain an application in the Office of Financial Aid, Second Floor, East Wing of the Student Services Building.

Application and payment must be made to the Cashier, EIU Business Office, deadline is no later than 3:30 p.m. June 20, 1986.

Cost for Summer Session

Spouse only ..... \$22

Each child ..... \$18

Please note even though you have purchased spouse and/or dependent insurance coverage, spouse and dependents are not entitled to use the Pharmacy or Health Services with the purchase of the insurance. Joyce Cinq-Mars, Insurance Specialist.

John Flynn, Director Financial Aid

## Testing Services Schedule of Local Examinations

Constitution: July 24, registration deadline is July 18, fee \$2 for retake.

August 4, registration deadline is July 28, fee \$2 for retake.

Health Competency: July 22, registration deadline is July 15, fee \$2.

Writing Competency: July 15, registration deadline is July 1, fee \$5.

Bring your EIU ID and fee to 208 Student Services Building when you register for examinations.

H.C. Bartling, Director Testing Services

## Drop Deadline

The deadline for dropping either an 8-week class or a 5-week class and having no entry on your permanent record for that class is MONDAY, JUNE 23, 4:30 p.m.

Michael D. Taylor, Director, Registration



# Official Notices

Official Notices are paid for through the Office of University Relations. Questions concerning notices should be directed to that office.

## Admission to Teacher Education

Students entering teacher preparation programs should meet in the Buzzard Education Building Auditorium on Thursday, June 19, 1986, at 4 p.m. in order to complete a formal application to the College of Education for Admission to Teacher Education. The next enrollment period will be Fall Semester, 1986.

Francis Summers, chair  
Student Teaching

## Requirements to Receive Financial Aid

THIS POLICY APPLIES TO THE FOLLOWING TYPES OF STUDENT FINANCIAL AID: ALL STATE'S GUARANTEED STUDENT LOANS (GSL), GUARANTEED STUDENT LOAN (GSL), ILLINOIS GUARANTEED LOAN (IGL), FEDERALLY INSURED STUDENT LOAN (FISL), PARENT LOAN FOR UNDERGRADUATE STUDENTS (PLUS), AUXILIARY LOAN TO ASSIST STUDENTS (ALAS), NATIONAL DIRECT STUDENT LOAN (NDSL), COLLEGE WORK STUDY (CWS), PELL GRANT, SUPPLEMENTAL EDUCATIONAL OPPORTUNITY GRANT (SEOG), ILLINOIS STATE SCHOLARSHIP MONETARY AWARDS (ISSC), THE NATIONAL GUARD/MILITIA GRANT, THE CORRECTIONAL OFFICER'S SURVIVOR GRANT PROGRAM, POLICEMAN/FIREMAN DEPENDANT'S GRANT PROGRAM, MERIT RECOGNITION SCHOLARSHIP PROGRAM, (MRS), AND SOCIO-ECONOMICALLY DISADVANTAGED STUDENT SCHOLARSHIP.

1. An **undergraduate** student shall have a maximum of ten periods of financial aid eligibility\* or a maximum of 135 cumulative semester hours, whichever comes first. The exact number of eligibility periods each student has shall be determined by the number of semester hours accumulated by the student at the time (s)he established financial aid eligibility for the first time as an **undergraduate** student at Eastern Illinois University.

A **graduate** student shall have a maximum of four periods of financial aid eligibility\* or a maximum of thirty-six cumulative semester hours, whichever comes first. The exact number of eligibility periods each student has shall be determined by the number of semester hours accumulated by the student at the time (s)he establishes financial aid eligibility for the first time as a **graduate** student at Eastern Illinois University.

\*The periods of enrollment for financial aid eligibility shall be known as Financial Aid Units (FAU). A full-time student (12 semester hours or more) shall be charged one FAU. A half-time student (6 to 11 semester hours) shall be charged one-half (.5) FAU. Whether a full FAU or a half FAU is charged to a student is determined by the number of semester hours the student is enrolled for at the time of Financial Aid disbursement each semester or whatever

usage is charged to ISSC, whichever is greater. 2. A student receiving financial aid is expected to have earned the semester hours indicated for his/her then current FAUs according to the following chart:

Financial Aid Units	Undergrad Cum Hrs.	Grad Cum. Hrs.
.5	3	3
1.0	6	5
1.5	10	8
2.0	14	12
2.5	20	16
3.0	26	20
3.5	32	25
4.0	39	36
4.5	45	
5.0	51	
5.5	57	
6.0	64	
6.5	70	
7.0	77	
7.5	84	
8.0	91	
8.5	98	
9.0	105	
9.5	112	
10.0	135	

PLEASE NOTE: Merely

taking a minimum of full time hours (12) or a minimum of half time hours (6), does not mean that satisfactory progress is being maintained. Please consult the above chart to ascertain the exact hours needed **each** term to maintain progress. Also, Grade Point Average earned is **not** a factor considered when satisfactory progress determination is being made. 3. At the close of each Spring Semester, the record of each student who has received financial aid for at least one of the prior three terms (Summer, Fall, Spring), shall be reviewed to determine if the student has made progress according to the above chart. Anyone not having the number of hours specified for his/her respective FAU, shall be cancelled from further financial aid until (s)he has earned sufficient hours to meet the appropriate standard. Students reaching either the **maximum FAUs or hours allowed** will be notified each term of their loss of financial aid

eligibility.

4. Appeals from financial aid disqualification will be heard by a committee composed of: Vice President for Student Affairs  
Dean of Student Academic Services  
Director or Associate Director of Admissions  
One member of Academic Advisement Center  
One faculty member to be appointed by the Faculty Senate  
One student to be appointed by the Student Senate  
Registrar

Satisfactory Progress Appeals will be reviewed on an individual basis. It is the responsibility of the student to supply documentation with the appeal letter.

5. At the close of summer and fall terms, any aid recipient earning fewer hours than those indicated on the chart shall be sent a warning letter.

6. Failures, incompletes, withdrawals, repetition of courses that were passed, and

courses taken for credit (audits) are not counted as part of the total number of credits completed. The Financial Aid Office is NOT notified when a student finishes an incomplete class or receives a grade change. Therefore, it is the student's responsibility to notify the Financial Aid Office when incompletes are finished and/or grade changes are made. Courses judged to be remedial shall count if passed even though not applicable to graduation requirements. English 1000, General Studies 1000, and Music 0541 are the three courses approved as remedial at present.

7. A continuing student shall be judged to have made Satisfactory Progress prior to becoming eligible for financial aid if allowed to enroll according to Eastern's academic standards.

8. To continue to receive aid, a student shall have the same grade point average that is expected from all students allowed to reenroll.

## EIU and State Employees.

# Now PersonalCare HMO is for you.

Now that PersonalCare HMO is available where you work. Talk to your employer. Examine the health care coverage options available. Talk to your spouse. See why PersonalCare HMO is the right health care coverage for you and your family.

Talk to your doctor.

Find out why PersonalCare HMO is for your health. For you. Now.



For Your Health.  
For You.  
**Personal  
Care  
HMO**<sup>SM</sup>

217-351-1226  
800-431-1211

1402 West University Avenue, Urbana, IL 61801

Developed by **Christie** and offered by physicians throughout Illinois.

© 1986 PersonalCare HMO, Inc.

116-5-86

## Act now! Enrollment ends 6/30.

## Puzzle Answers

SLAPS ATOP MAZE  
HELOT CAPO AMES  
OTERO TRET LETT  
VICTORIA REGINA  
ENSILE ANON  
ASHES TUGGED  
ATP ABUT DELTA  
THEROBBERBARONS  
KOPEK STIR BAH  
AROMAS SPODE  
OPAL TESTAE  
OEDIPUS THE KING  
JOVE PROA MIMIR  
ANIL ECTO EMOTE  
GALS RHOS DONAT



Aye matey!  
You can find  
great savings  
in the  
classifieds!



Never too old

Area senior citizens set for olympics this weekend

By HARRELL KERKHOFF  
Sports writer

The 6th Annual Senior Olympics for east central Illinois citizens 55 years and older will be held on Eastern's campus Friday and Saturday.

Marilyn Morrow, third-year meet director of area Senior Olympics, said this is the most participants the program has had since she has been heading it.

The participation will start at 6:30

a.m. Friday at Rogala Public Links Golf Course with a golf tournament. In the evening, Charleston Lanes will be the site of a bowling tournament starting at 6:30 p.m. and an eight-ball pool tournament starting at 8:30 p.m.

Saturday's activities will be shifted to Eastern's campus with a number of events planned. Track and field will start off the day beginning at 8:30 a.m. Other events that are to be held will be bate casting at 10:30 a.m., horseshoes

at 11:30 a.m., table tennis and shuffle board at 12 p.m., basketball free throws at 1 p.m., and swimming at 1 p.m.

There will be five age groups participating in this years' events for both men and women. The age groups are 55-59, 60-64, 65-69, 70-74 and 75 or older. Morrow said most of the entries are in their late 60's or early 70's with several in their 80's.

Eastern faculty members and students have been coming forward to help with the weekends' events, Morrow said.

Most of the participants this year are from Coles and surrounding counties. Morrow said, however, that she has received some entries from the Chicago area and from various parts of Southern Illinois, plus one entry from as far away as Kentucky.

LAST NITE!

\$1.00 ALL TIMES

WILL ROGERS

CHARLESTON • 345-9222


LAST NITE!

"GUNG HO" (PG-13)

7:15 AND 9:15

"SWEET LIBERTY" (PG)

7:00 AND 9:10



It's about falling in love. For the first time.


Starts Friday!

COREY HAIM  
CHARLIE SHEEN

PG-13

LUCAS

NITELY 7:00 AND 9:10/SAT. & SUN. MATINEE 2:00 PM



Crime is a disease. Meet the cure.

Starts Friday!

SYLVESTER STALLONE

COBRA

R The strong arm of the law

NITELY 7:10 AND 9:15/SAT. & SUN. MATINEE 2:10 PM

LAST NITE!

TIME

MATTOON • 235-3515


LAST NITE!

"RAW DEAL" (R)

5:00 • 7:05 • 9:10

"POLTERGEIST II" (PG-13)

5:05 • 7:00 • 9:00



one will survive


Starts Friday!

DENNIS QUAID  
LOUIS GOSSETT, JR.

TWENTIETH CENTURY-FOX

PG-13

NITELY 5:00 • 7:10 • 9:20/SAT. & SUN. MATINEE 2:10 PM



ROBERT REDFORD  
DEBRA WINGER DARYL HANNAH

LEGAL EAGLES

THE NEW COMEDY FROM THE DIRECTOR OF GHOSTBUSTERS.

PG

DOLBY STEREO

A UNIVERSAL Picture

NITELY 4:45 • 7:00 • 9:15

SATURDAY AND SUNDAY MATINEE 2:00 PM

\$2.00 ALL SHOWS BEFORE 6PM DAILY

LAST NITE!

CINEMA

MATTOON • 258-8228

LAST NITE!

"SHORT CIRCUIT" (PG)

5:00 • 7:05 • 9:00

LIMITED ENGAGEMENT 1 WEEK ONLY!

E.T. THE EXTRA-TERRESTRIAL

PG

NITELY 4:30 • 7:05 • 9:20/SAT. & SUN. MATINEE 2:05 PM

HELD OVER SECOND WEEK!

Rodney Dangerfield

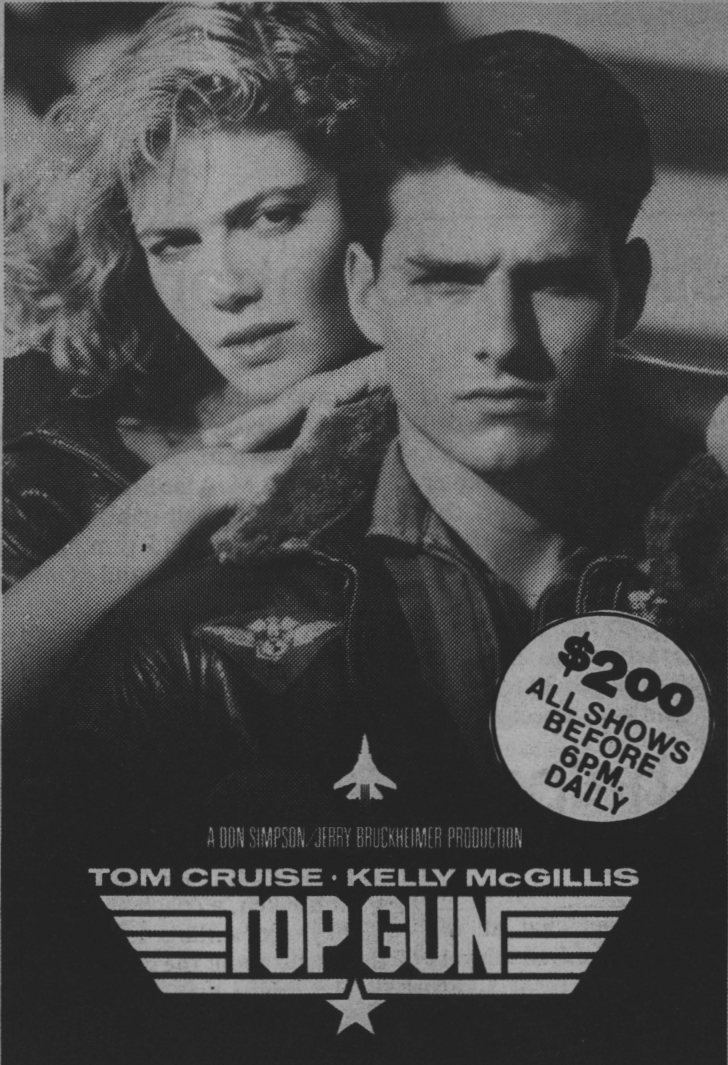
BACK TO SCHOOL

PG-13

TONITE! 5:10 • 7:10 • 9:10

FRI. & SAT. NITE 5:00 • 7:10 • 9:25/SAT. & SUN. MATINEE 2:10 PM

UP THERE WITH THE BEST OF THE BEST.



A DON SIMPSON / JERRY BRUCKHEIMER PRODUCTION

TOM CRUISE • KELLY MCGILLIS

TOP GUN

PARAMOUNT PICTURES PRESENTS • A DON SIMPSON / JERRY BRUCKHEIMER PRODUCTION • A TONY SCOTT FILM • TOM CRUISE • KELLY MCGILLIS • VALKILMER • ANTHONY EDWARDS • TOM SKERRITT • WRITTEN BY JIM CASH & JACK EPPS, JR. • PRODUCED BY DON SIMPSON AND JERRY BRUCKHEIMER • DIRECTED BY TONY SCOTT • A PARAMOUNT PICTURE

NITELY 4:45 • 7:00 • 9:15

SATURDAY AND SUNDAY MATINEE 2:00 PM

\$2.00 ALL SHOWS BEFORE 6PM DAILY

35 mm

DOLBY STEREO



# 'Sir Duck' No. 2 pick for Spurs in NBA draft

By CINDY BEAKE  
Sports editor

Being drafted in the second round of the NBA draft by the San Antonio Spurs could be a blessing for former Panther Kevin Duckworth.

Duckworth, who had been told by Portland Trailblazer officials as early as Tuesday morning that he would be their second pick in the first round, said he was pleased that he was picked by the Spurs.

"I am excited," Duckworth said, minutes after receiving the news from Panther basketball coach Rick Samuels at a press conference Tuesday.

"I don't know much about the Spurs. But I am willing to learn," said a pleasantly surprised Duckworth.

The opening of the back-up center position on the Spurs, will give Duckworth a good chance to make the squad.

The status of Spurs starting center Artis Gilmore is being discussed because of trade talks with the Chicago Bulls. Gilmore played with the Bulls in the late 1970s.

With the Spurs, Duckworth will be given the opportunity to play with All-American Duke guard Johnny Dawkins, who the Spurs selected in the first round.

Don Kojich, assistant director of sports information, said Duckworth is going to have to continue working out before heading off to rookie camp in San Antonio.

He is probably going to "lose a few pounds," he said, "and practice on his deficiencies," in his game.

Duckworth's weight has been in controversy since his freshman year at Eastern. He was successful in lowering his weight from 330 to 290 pounds within two years.

Before being drafted by San Antonio, Duckworth said that he would have no objections to having a weight clause in his contract "as long as they put it at a reasonable weight."



A smile of elation crosses former Eastern center Kevin Duckworth's face as WAND-TV's Rick Zurak throws the questions at a press conference following

the San Antonio Spurs second-round draft pick of the 7-footer Tuesday.

BILL HEILMAN / Staff photographer

Duckworth said his ideal playing weight is between 275 and 280 pounds.

San Antonio's selection made Duckworth the highest drafted player in Illinois and the highest selection ever from Eastern.

The 7-0 center was drafted before such University of Illinois players as Bruce Douglas, Efrem Winters, Anthony Welch and Scott Meents.

He finished his career as the Panthers' third all-time leading scorer with 1,569 points and the all-time leading rebounder with 867.

Two Panthers have been drafted by the NBA. In 1976 Brad Warble was taken in the eighth round and in 1977 Rich Rhodes was also an

eighth-round selection.

Eastern All-American forward Jon Collins was also drafted. He was picked in the fifth round by the high-scoring Denver Nuggets.

Collins has "great speed and quickness," according to the 1986 NBA Draft Guide.

Collins had an exciting career with the Panthers as he became Eastern's all-time leading scorer with 1,702 points and was the AMCU-8 "Most Valuable Player" twice.

Collins, who will play off guard, has the better chance of making a team like Denver because their style of play is compatible, Samuels said.

Duckworth has admitted to having difficulties with rebounding.

## Deadline set for intramural entries

By CINDY BEAKE  
Sports editor

Even though intercollegiate sports is over for the season, students can still enjoy intramural sports.

During the eight-week summer session students, faculty and staff can have fun by taking advantage of the five intramural activities offered: basketball, co-rec and men's and women's softball, co-rec volleyball, tennis singles and racquetball singles.

"We're hoping for 25 or 30 teams in all," David Dutler director of

recreational sports said.

"Some people get involved in two or three activities," Dutler said.

Men's basketball will be played at 7, 8, and 9 p.m. Tuesdays and Wednesdays at McAfee South Gym.

Co-rec softball will be played at 4:15, 5:15 and 6:15 p.m. Tuesdays at Women's Varsity and Old Varsity fields.

Men's and women's softball will be played at 4:15, 5:15 and 6:15 p.m. Mondays and Wednesdays at the Women's Varsity and Old Varsity

fields.

Co-rec volleyball will be played at 7:30 and 8:15 p.m. Mondays at McAfee North Gym.

Time and place for tennis matches will be arranged among the players on any agreeable court.

Racquetball singles will also be self arranged and played at Lantz courts.

Intramural schedules are available at the Recreational Sports Office at Lantz Gym and the entry deadline for all activities is June 26.

## Camp helps youth with team skills

By CINDY BEAKE  
Sports editor

If you are wondering what all the junior high school basketball players are doing tying up courts at Lantz Gym, they are here for the 11th Annual Panther Boys Basketball Camp sponsored by the Eastern Athletic Department.

The future basketball stars of America range in age from 10 to 14 and are here to improve their individual and well as team skills.

The emphasis for this week's camp, which lasts until Saturday, is on incorporating what they learn in the camp into their game and to fine-tune their strengths.

These youths are "eager to learn," Paul Lueken, a coach at the camp said. "They are willing to learn and enthusiastic about the game."

The junior high schoolers are from all parts of Illinois.

"I came here (from Leitchfield) because I feel like learning more about basketball," ninth grader Craig Langen said.

The campers are divided into sixth and seventh, eighth, and ninth grade teams to compete against one another in daily league games.

Other features of the camp are: individual instruction and video-tape analysis of each camper, instruction by

college and high school coaches, and all the facilities Lantz Gym has to offer.

The coaches teach that a well-rounded game is most beneficial so they "drill" the campers in offensive and defensive fundamentals.

In addition, instruction will be given on rebounding, and agility and flexibility drills.

A similar camp with co-ed participation started Wednesday.

The 3rd Annual Post Players Invitational Camp features post-up play, positioning drills, shooting, passing and rebounding drills, and defensive techniques.

## Cubs win in 10th 5-4 over Phillies

CHICAGO (AP)-Ron Cey scored from third on a wild pitch by reliever Don Carman in the bottom of the 10th inning Wednesday, giving the Chicago Cubs a 5-4 victory over the Philadelphia Phillies.

Jody Davis opened the 10th with a walk against reliever Steve Bedrosian. Pinch runner Dave Matrinez stole second but was thrown out at the plate trying to score on Cey's single to left. Cey took second on the play at the plate.

Carman relieved Bedrosian and walked Leon Durham intentionally. Then Jerry Mumphy also walked, loading the bases. With Thad Boisley batting for winning pitcher Lee Smith, Carman delivered the wild pitch that allowed Cey to score.

Shawon Dunston brought the Cubs back from a 4-1 deficit when he doubled in two runs in the eighth and led off the ninth with his eighth homer, knocking out Shane Rawley.

Rawley was trying to become the National League's second 10-game winner.

The Phillies took a 3-0 lead against Steve Trout when Von Hayes singled in a run in the first inning and Ron Roenicke singled home two more in the fourth.