

8-4-1994

Acer saccharinum L.

Barbara Ertter

Conatance Lincoln

Follow this and additional works at: http://thekeep.eiu.edu/herbarium_specimens_byname



Part of the [Botany Commons](#)

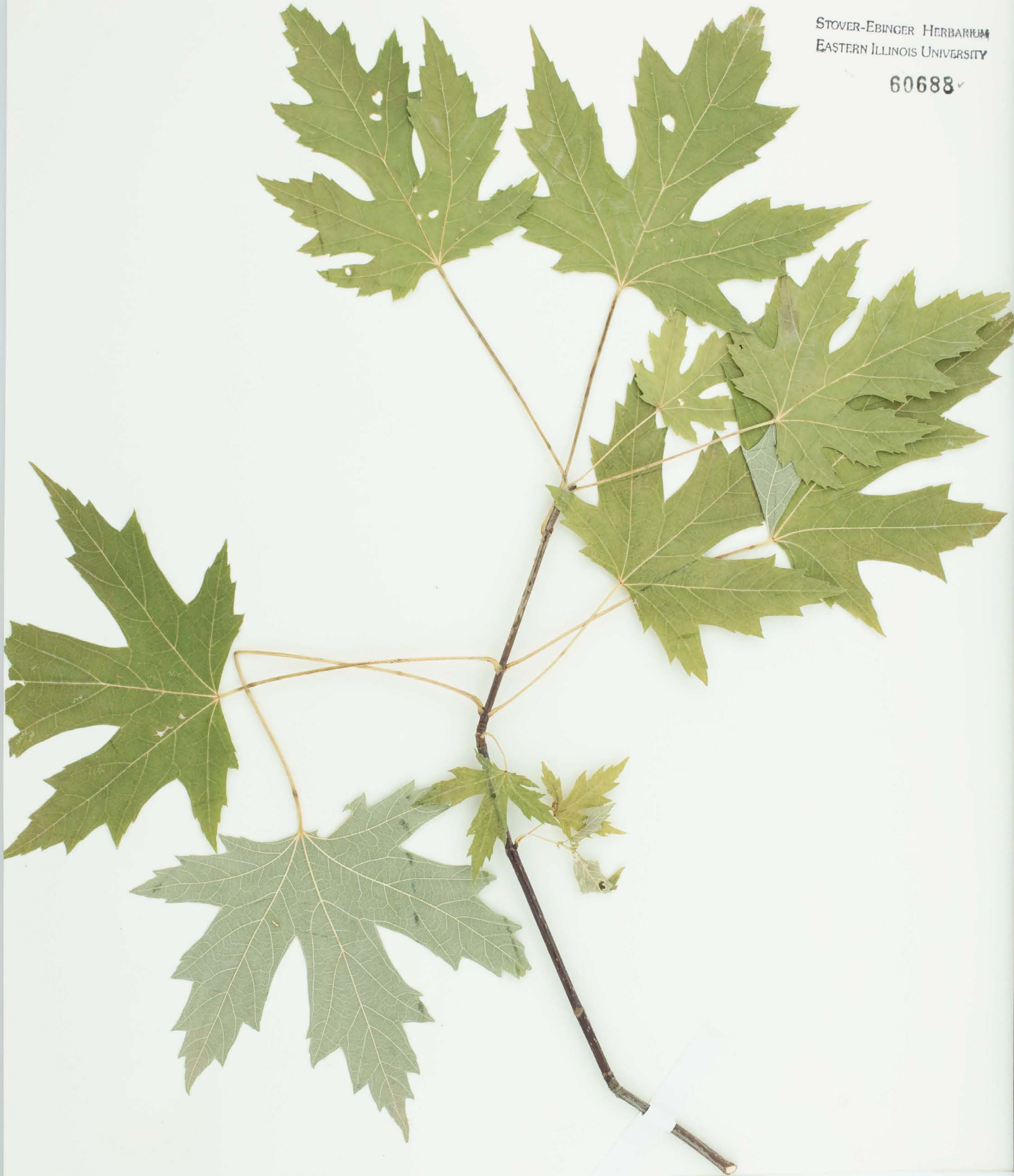
Recommended Citation

Sapindaceae, *Acer saccharinum*, L. USA, Idaho, Idaho, ca 1 mile N of Stites on Hwy. 13 along Clearwater River. Ca. 1300 ft. Legal: T32N R4E S20, 46.106037, -115.976253, 1994-08-04, Ertter, Barbara, 13039, (EIU). Stover-Ebinger Herbarium, Eastern Illinois University.
http://thekeep.eiu.edu/herbarium_specimens_byname/20750



STOVER-EBINGER HERBARIUM
EASTERN ILLINOIS UNIVERSITY

60688 ✓



PLANTS OF IDAHO, USA

Acer *saccharinum* L. ACE
det. G.C. Tucker, 2005

IDAHO CO.: ca 1 north of Stites on Hwy 13 along
Clearwater River, riparian growth, basalt substrate,
T32N R4E Sec 20, ca 1300'.
Occasional tree downstream from Stites, no fruit seen.

Barbara Ertter 13039 4 August 1994
with Lincoln Constance

The University of California at Berkeley