

4-15-1983

# Acer saccharum Marshall

Loy R. Phillippe

*Illinois Natural History Survey*, rickp@inhs.illinois.edu

Follow this and additional works at: [http://thekeep.eiu.edu/herbarium\\_specimens\\_byname](http://thekeep.eiu.edu/herbarium_specimens_byname)



Part of the [Botany Commons](#)

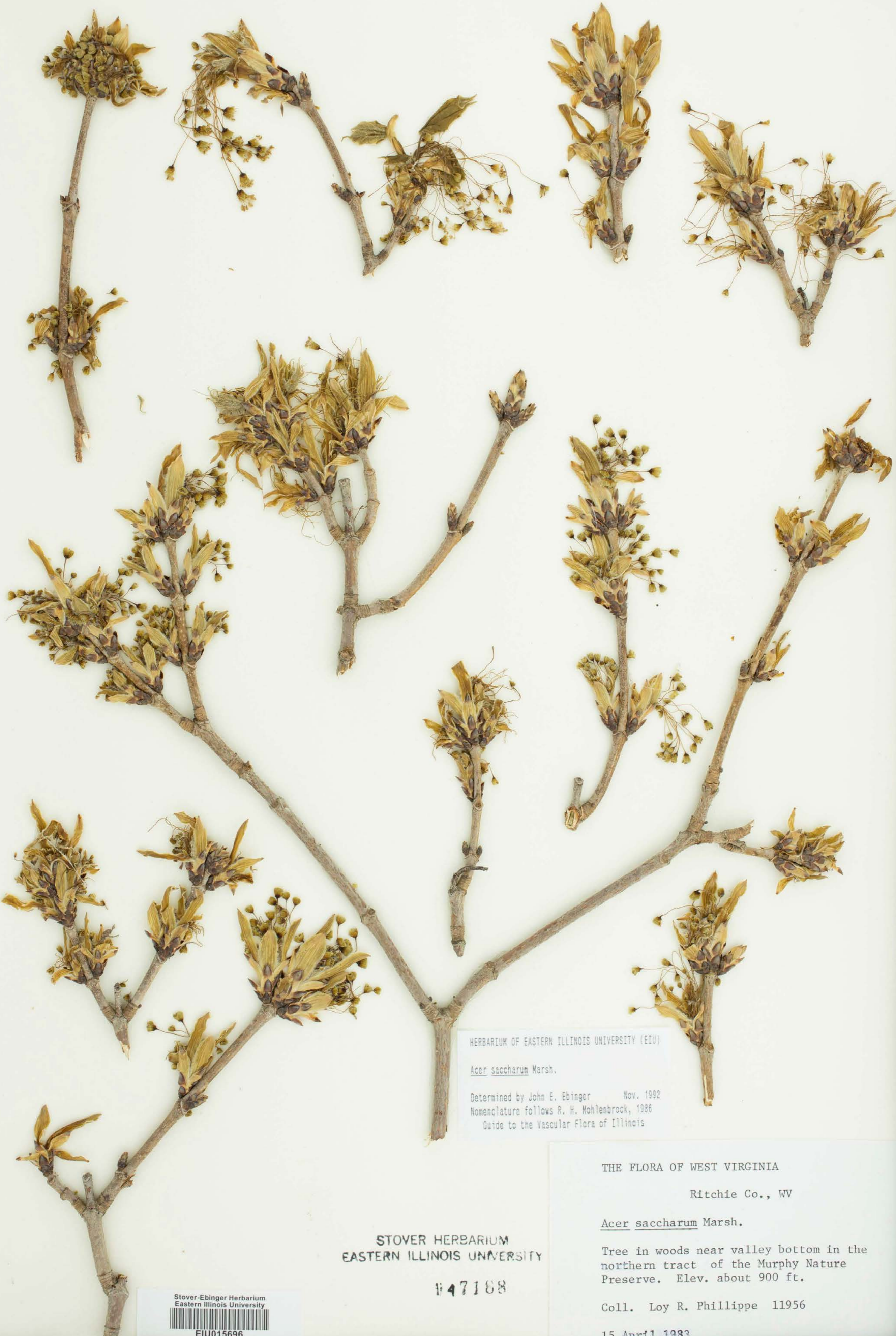
---

## Recommended Citation

Sapindaceae, *Acer saccharum*, Marshall. USA, West Virginia, Ritchie, Northern tract of the Murphy Nature Preserve, 1983-04-15, Phillippe, Loy R., 11956, (EIU). Stover-Ebinger Herbarium, Eastern Illinois University. [http://thekeep.eiu.edu/herbarium\\_specimens\\_byname/20725](http://thekeep.eiu.edu/herbarium_specimens_byname/20725)

This Specimen is brought to you for free and open access by the Stover-Ebinger Herbarium at The Keep. It has been accepted for inclusion in Specimens by Name by an authorized administrator of The Keep. For more information, please contact [tabruns@eiu.edu](mailto:tabruns@eiu.edu).





HERBARIUM OF EASTERN ILLINOIS UNIVERSITY (EIU)  
*Acer saccharum* Marsh.  
Determined by John E. Ebinger Nov. 1992  
Nomenclature follows R. H. Mohlenbrock, 1986  
Guide to the Vascular Flora of Illinois

THE FLORA OF WEST VIRGINIA  
Ritchie Co., WV  
*Acer saccharum* Marsh.  
Tree in woods near valley bottom in the  
northern tract of the Murphy Nature  
Preserve. Elev. about 900 ft.  
Coll. Loy R. Phillippe 11956  
15 April 1983

STOVER HERBARIUM  
EASTERN ILLINOIS UNIVERSITY  
V47188

Stover-Ebinger Herbarium  
Eastern Illinois University  
EIU015696