

6-25-1980

Acer rubrum Wats.

John E. Ebinger

Eastern Illinois University, jeebinger@eiu.edu

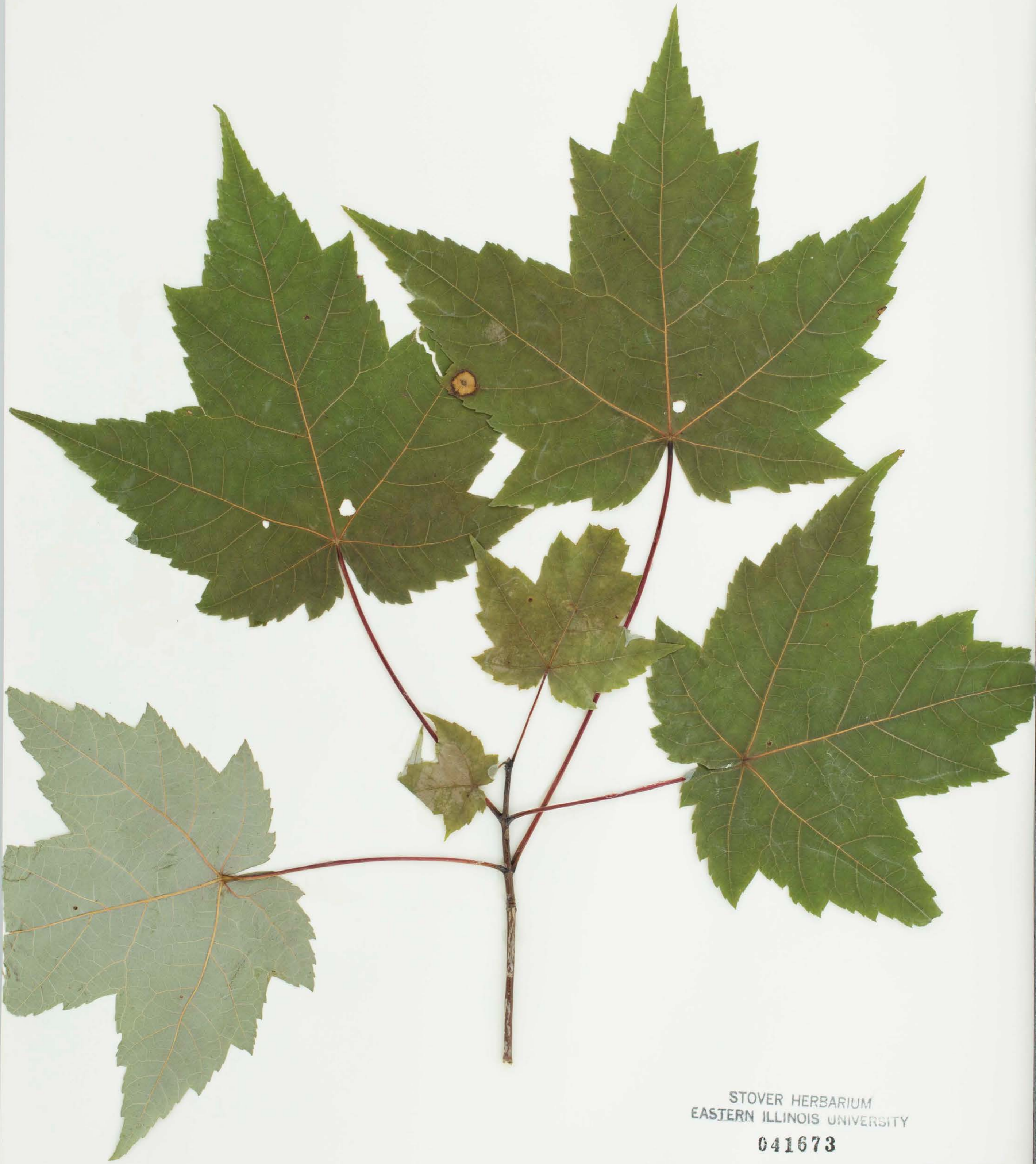
Follow this and additional works at: http://thekeep.eiu.edu/herbarium_specimens_byname

Part of the [Botany Commons](#)

Recommended Citation

Sapindaceae, *Acer rubrum*, Wats. USA, Indiana, Perry, 1.1 miles north of Branchville, Ind., 1980-06-25, Ebinger, J.E., 19268, (EIU). Stover-Ebinger Herbarium, Eastern Illinois University. http://thekeep.eiu.edu/herbarium_specimens_byname/20694

This Specimen is brought to you for free and open access by the Stover-Ebinger Herbarium at The Keep. It has been accepted for inclusion in Specimens by Name by an authorized administrator of The Keep. For more information, please contact tabruns@eiu.edu.



STOVER HERBARIUM
EASTERN ILLINOIS UNIVERSITY
041673

STOVER HERBARIUM
of the
EASTERN ILLINOIS UNIVERSITY
Acer rubrum L.

Tree 6 m tall, woods 1.1 miles north of
Branchville, Ind.
SE $\frac{1}{4}$ Sect 12 T4S R2W

Date 25 June 1980 **Collected by** John Ebinger 19268
Location Perry Co., Indiana

HERBARIUM OF EASTERN ILLINOIS UNIVERSITY (EIU)

Acer rubrum L.

Determined by John E. Ebinger Nov. 1992
Nomenclature follows R. H. Mohlenbrock, 1986
Guide to the Vascular Flora of Illinois

Stover-Ebinger Herbarium
Eastern Illinois University



EIU015654