

5-7-2007

## Acer pensylvanicum L.

Evelyn Mears

Joyce Beck

Laurie Glaysher

Follow this and additional works at: [http://thekeep.eiu.edu/herbarium\\_specimens\\_byname](http://thekeep.eiu.edu/herbarium_specimens_byname)

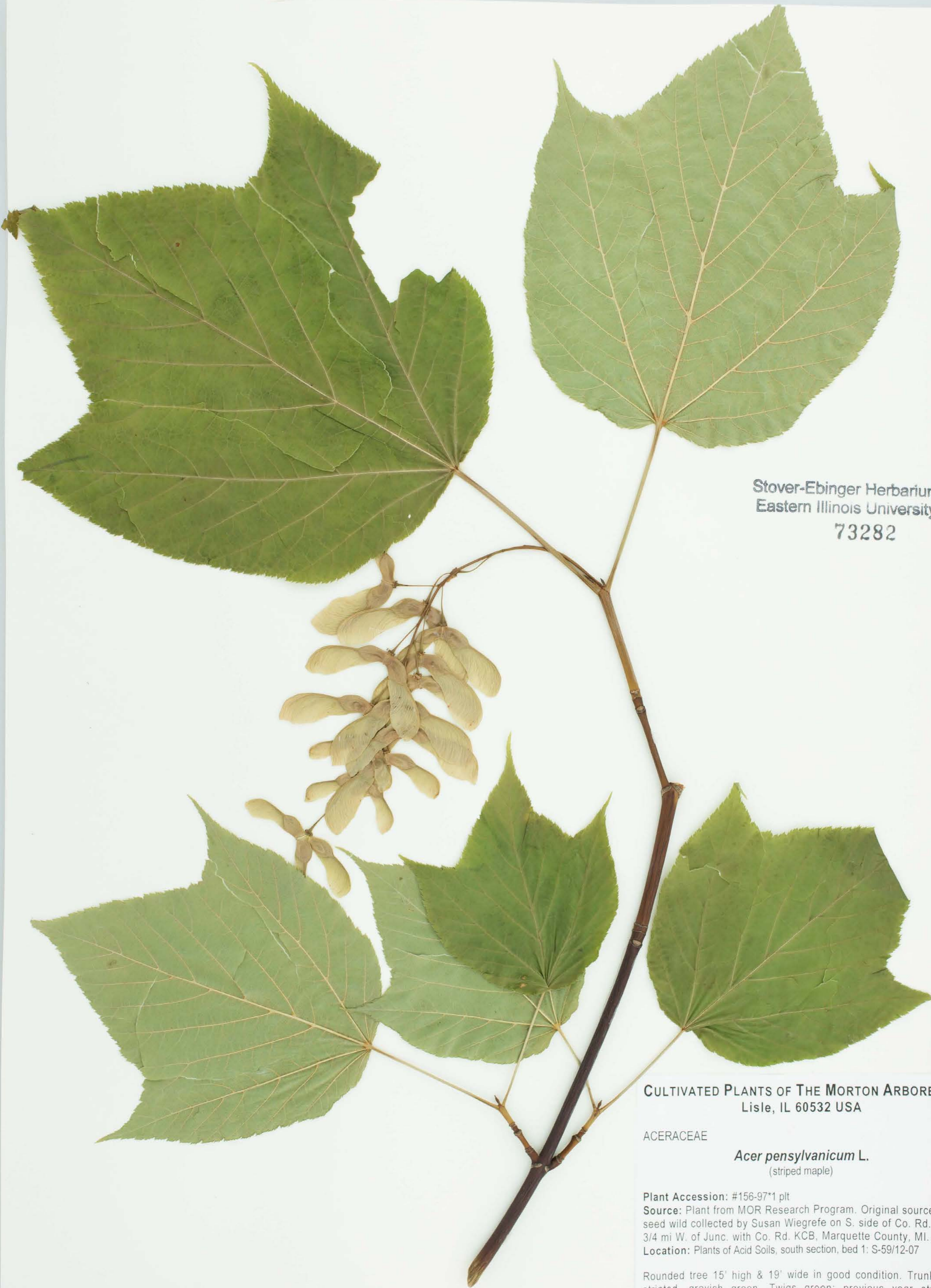


Part of the [Botany Commons](#)

---

### Recommended Citation

Sapindaceae, *Acer pensylvanicum*, L. USA, Illinois, DuPage, Plant from MOR Research Program. Original source: seed wild collected by Susan Wiegrefe on S. side of Co. Rd. KD, 3/4 mi W. of June. with Co. Rd . KCB , Marquette County, MI, 2007-05-07, Mears, Evelyn, 10522V07, (EIU). Stover-Ebinger Herbarium, Eastern Illinois University. [http://thekeep.eiu.edu/herbarium\\_specimens\\_byname/20683](http://thekeep.eiu.edu/herbarium_specimens_byname/20683)



Stover-Ebinger Herbarium  
Eastern Illinois University  
73282

CULTIVATED PLANTS OF THE MORTON ARBORETUM  
Lisle, IL 60532 USA

ACERACEAE

*Acer pensylvanicum* L.  
(striped maple)

Plant Accession: #156-97\*1 plt

Source: Plant from MOR Research Program. Original source:  
seed wild collected by Susan Wiegrefe on S. side of Co. Rd. KD,  
3/4 mi W. of Junc. with Co. Rd. KCB, Marquette County, MI.

Location: Plants of Acid Soils, south section, bed 1: S-59/12-07

Rounded tree 15' high & 19' wide in good condition. Trunk bark  
striated, grayish green. Twigs green; previous year striated,  
grayish green. Fruit green, RHS #145-B.

Evelyn Mears, Joyce Beck, Laurie Glaysher  
#10522V07  
May 7, 2007