

10-6-2000

Acer saccharum Marshall

Bob Edgin

Illinois Nature Preserves Commission, Bob.Edgin@illinois.gov

Follow this and additional works at: http://thekeep.eiu.edu/herbarium_specimens_byname



Part of the [Botany Commons](#)

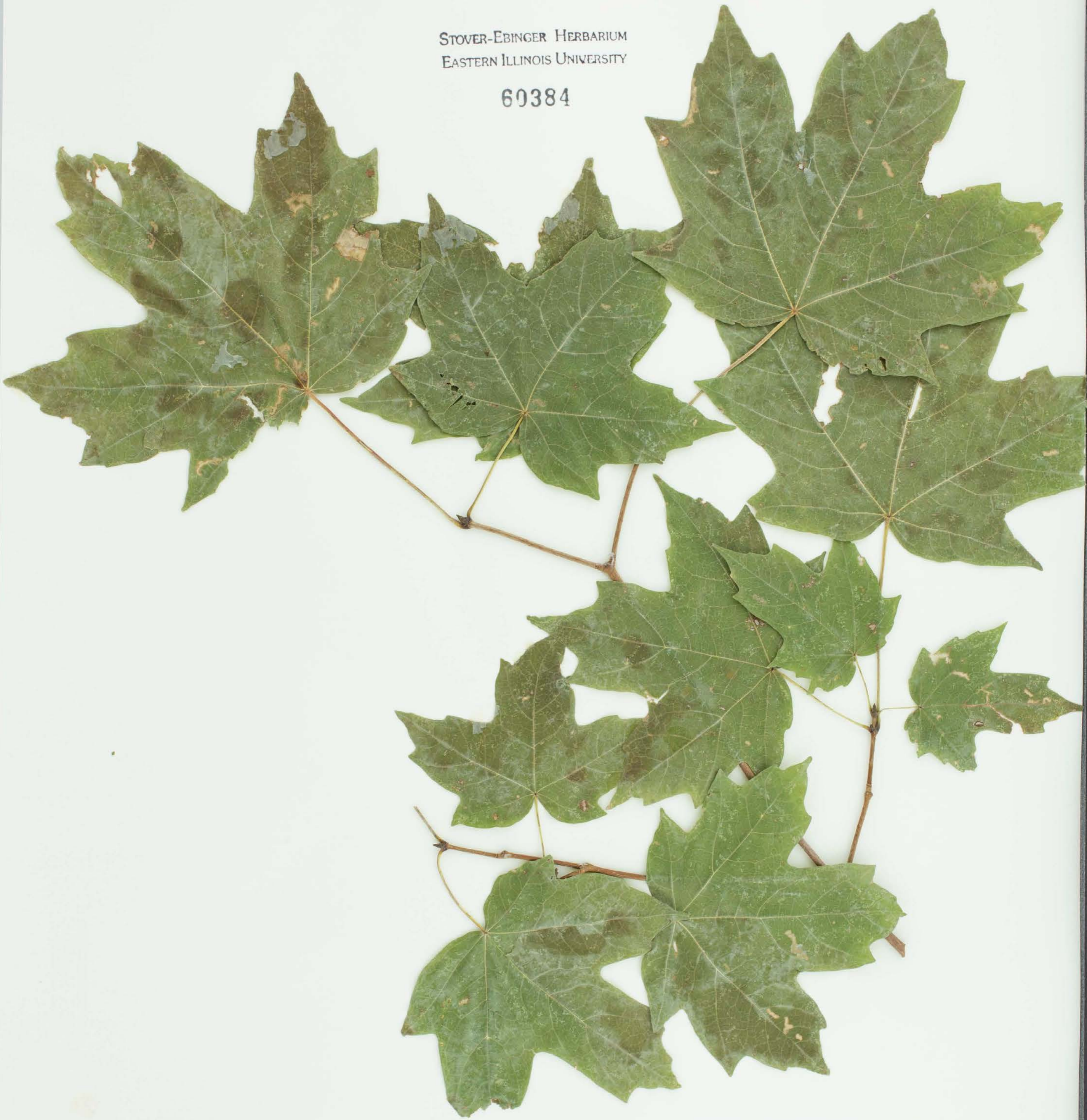
Recommended Citation

Sapindaceae, *Acer saccharum*, Marshall. USA, Illinois, Richland, At Big Creek Woods Mem. NP.; SW/4 SE/4 Sec 15 T3N R10E 3pm., 38.689485, -88.082949, 2000-10-06, Edgin, Bob, 3784, (EIU). Stover-Ebinger Herbarium, Eastern Illinois University. http://thekeep.eiu.edu/herbarium_specimens_byname/20615



STOVER-EBINGER HERBARIUM
EASTERN ILLINOIS UNIVERSITY

60384



HERBARIUM OF BOB EDGIN

SPECIMEN # 3784

Acer saccharum Marsh.

Aceraceae

Upland forest at Big Creek Woods Mem.
NP, Richland, Co, IL

SW/4, SE/4, SECT 15, T3N, R10E, 3PM

October 6, 2000

Verified by: J. E. Ebinger