

10-25-1973

Acer saccharum Marshall

John E. Ebinger

Eastern Illinois University, jeebinger@eiu.edu

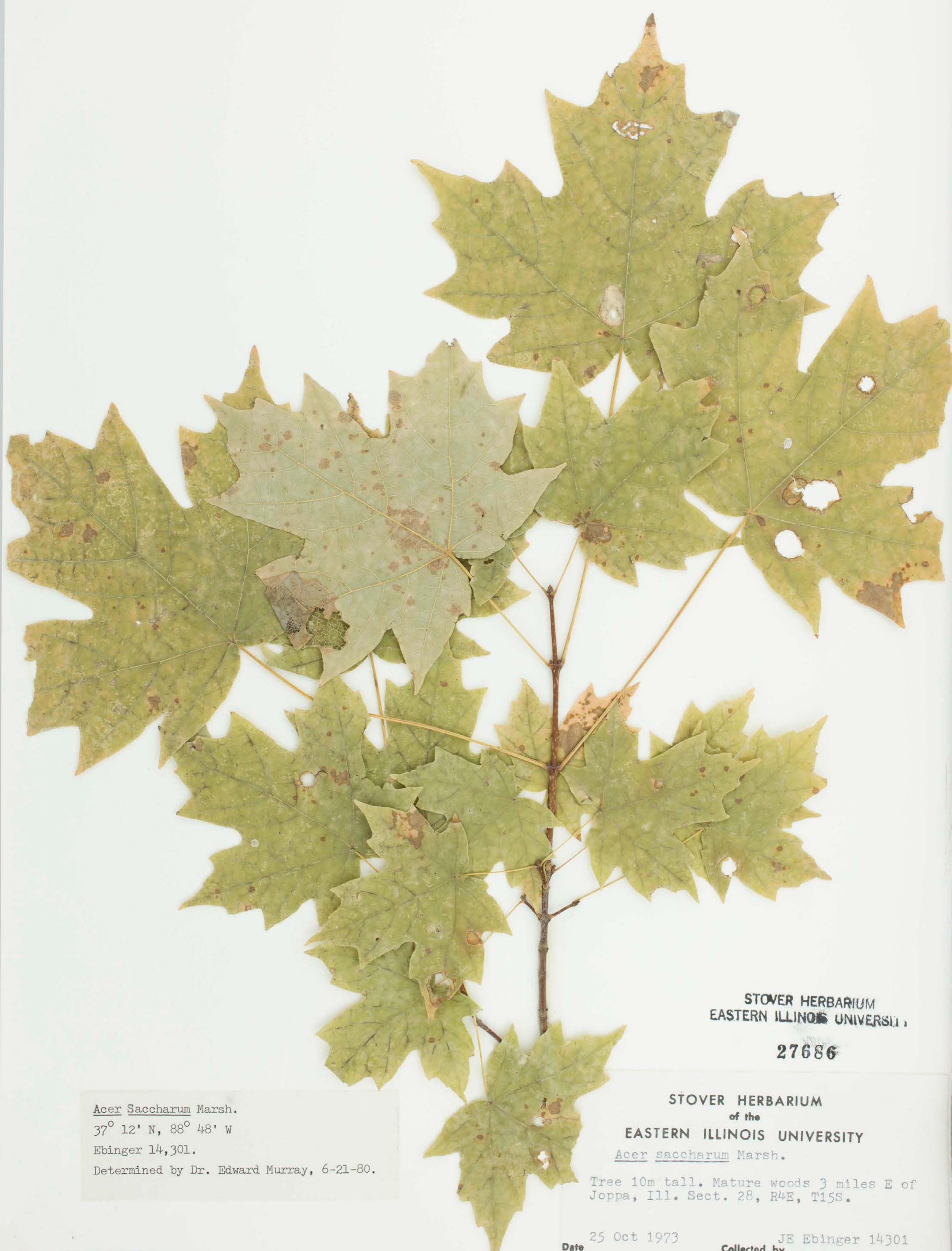
Follow this and additional works at: http://thekeep.eiu.edu/herbarium_specimens_byname

Part of the [Botany Commons](#)

Recommended Citation

Sapindaceae, *Acer saccharum*, Marshall. USA, Illinois, Massac, Mautre woods 3 mi E of Joppa, IL sect. 28, R4E, T15S, 1973-10-25, Ebinger, John E., 14301, (EIU). Stover-Ebinger Herbarium, Eastern Illinois University. http://thekeep.eiu.edu/herbarium_specimens_byname/20600

This Specimen is brought to you for free and open access by the Stover-Ebinger Herbarium at The Keep. It has been accepted for inclusion in Specimens by Name by an authorized administrator of The Keep. For more information, please contact tabruns@eiu.edu.



Acer saccharum Marsh.
37° 12' N, 88° 48' W
Ebinger 14,301.
Determined by Dr. Edward Murray, 6-21-80.

STOVER HERBARIUM
EASTERN ILLINOIS UNIVERSITY
27686

STOVER HERBARIUM
of the
EASTERN ILLINOIS UNIVERSITY
Acer saccharum Marsh.

Tree 10m tall. Mature woods 3 miles E of
Joppa, Ill. Sect. 28, R4E, T15S.

Date 25 Oct 1973 Collected by JE Ebinger 14301
Location Massac County, Ill.