

7-16-1971

Ampelopsis arborea (L.) Koehne

Roger T. Poole

Follow this and additional works at: http://thekeep.eiu.edu/herbarium_specimens_byname



Part of the [Botany Commons](#)

Recommended Citation

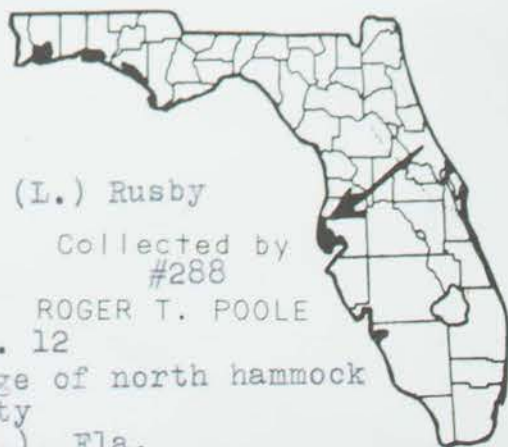
Vitaceae, *Ampelopsis arborea*, (L.) Koehne. USA, Florida, Pinellas, Vine growing at edge of north hammock on McMullen property. Largo, (Pinellas Co.), Florida. T30S., R14E., Sect. 12, 1971-07-16, Poole, Roger T., 288, (EIU). Stover-Ebinger Herbarium, Eastern Illinois University.
http://thekeep.eiu.edu/herbarium_specimens_byname/18752



STOVER HERBARIUM
EASTERN ILLINOIS UNIVERSITY

021056

PLANTS OF
PINELLAS COUNTY
FLORIDA



VITACEAE
(Pepper Vine)
Ampelopsis arborea (L.) Rusby

Date
16-VII-71

Collected by
#288

Location
T30S., R14E., Sect. 12

ROGER T. POOLE

Vine growing at edge of north hammock
on McMullen property
Largo, (Pinellas Co.), Fla.

Stover-Ebinger Herbarium
Eastern Illinois University
EIU013086

HERBARIUM OF EASTERN ILLINOIS UNIVERSITY (EIU)

Ampelopsis arborea (L.) Koehne

Determined by John E. Ebinger Feb. 1992
Nomenclature follows R. H. Mohlenbrock, 1986
Guide to the Vascular Flora of Illinois